



Photo #1 of 11

John Barnd House (BF05-85)
Kearney, Buffalo County, Nebraska

Photo by Joni Gilkerson, Nebraska
State Historical Society
November, 1982 (NSHS 8211/5: 26)

View looking north showing south
(front) facade.



Photo #2 of 11

John Barnd House (BF05-85)
Kearney, Buffalo County, Nebraska

Photo by Joni Gilkerson, Nebraska
State Historical Society
November, 1982 (NSHS 8211/5: 23)

View looking northwest showing south and
east facades.



Photo #3 of 11

John Barnd House (BF05-85)
Kearney, Buffalo County, Nebraska

Photo by Joni Gilkerson, Nebraska
State Historical Society
November, 1982 (NSHS 8211/5:14)

View looking southwest showing north and
east facades.



Photo #4 of 11

John Barnd House (BF05-85)
Kearney, Buffalo County, Nebraska

Photo by Joni Gilkerson, Nebraska
State Historical Society
November, 1982 (NSHS 8211/5:31)

View looking southeast showing north and
west facades.



Photo #5 of 11

John Barnd House (BF05-85)
Kearney, Buffalo County, Nebraska

Photo by Joni Gilkerson, Nebraska
State Historical Society
November, 1982 (NSHS 8211/5: 18)

View looking north showing detail of front
entry and verandah.



9/26/79
Photo #6 of 11

John Barnd House (BF05-85)
Kearney, Buffalo County, Nebraska

Photo by Joni Gilkerson, Nebraska
State Historical Society
November, 1982 (NSHS 8211/5: 16)

View facing west, looking up, showing detail
of east gable facade.



Photo #7 of 11

John Barnd House (BF05-85)
Kearney, Buffalo County, Nebraska

Photo by Joni Gilkerson, Nebraska
State Historical Society
November, 1982 (NSHS 8211/5: 9)

View looking northwest showing south and
east facades of the carriage barn.

792-9



792 129

Photo #8 of 11

John Barnd House (BF05-85)
Kearney, Buffalo County, Nebraska

Photo by Janet Jeffries Spencer, Nebraska
State Historical Society
November, 1982 (NSHS 8211/6: 12a)

Interior view looking southeast showing
parlor stove and window seat in front
entry room.



792 1a

Photo #9 of 11

John Barnd House (BF05-85)
Kearney, Buffalo County, Nebraska

Photo by Janet Jeffries Spencer, Nebraska
State Historical Society
November, 1982 (8211/6: 1a)

Interior view looking northeast showing
open stairway.



79299

Photo #10 of 11

John Barnd House (BF05-85)
Kearney, Buffalo County, Nebraska

Photo by Janet Jeffries Spencer, Nebraska
State Historical Society
November 1982 (8211/6: 9a)

Interior view facing northeast looking
down toward stair landing.

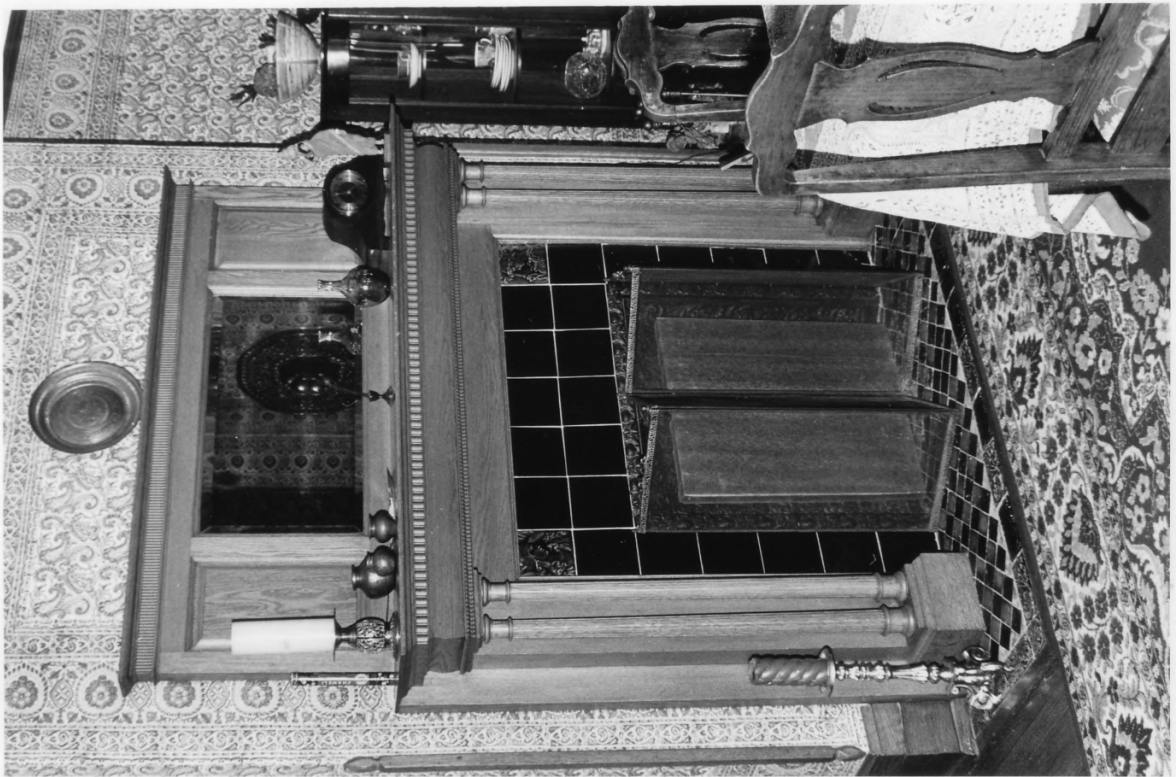


Photo #11 of 11

John Barnd House (BF05-85)
Kearney, Buffalo County, Nebraska

Photo by Janet Jeffries Spencer, Nebraska
State Historical Society
November, 1982 (8211/6: 16a)

Interior view looking southeast showing
parlor stove in dining room.

792 16a