



06029#4

Hamm Brewing Company Beer Depot
East Grand Forks, Polk County, MN
Tom Harvey
1983
Minnesota Historical Society, 690
Cedar St., St. Paul, MN 55101
Looking west
06029/4

NOTICE: This material may be
protected by copyright law
(Title 17 U. S. Code)

FROM THE COLLECTIONS OF THE
MINNESOTA HISTORICAL SOCIETY
THIS PHOTOGRAPH IS FOR REFERENCE USE
ONLY. IT MAY NOT BE REPRODUCED OR
SOLD WITHOUT WRITTEN PERMISSION.



Coca-Cola **VALLEY DAIRY** *Coca-Cola*
VALDAY CORPORATION

CITY
PRODUCE

SWEET CLOVER DAIRY COLD STORAGE LOCKERS

MEAT CUTTING
WRAPPING
GRINDING
FREEZING

04348#18

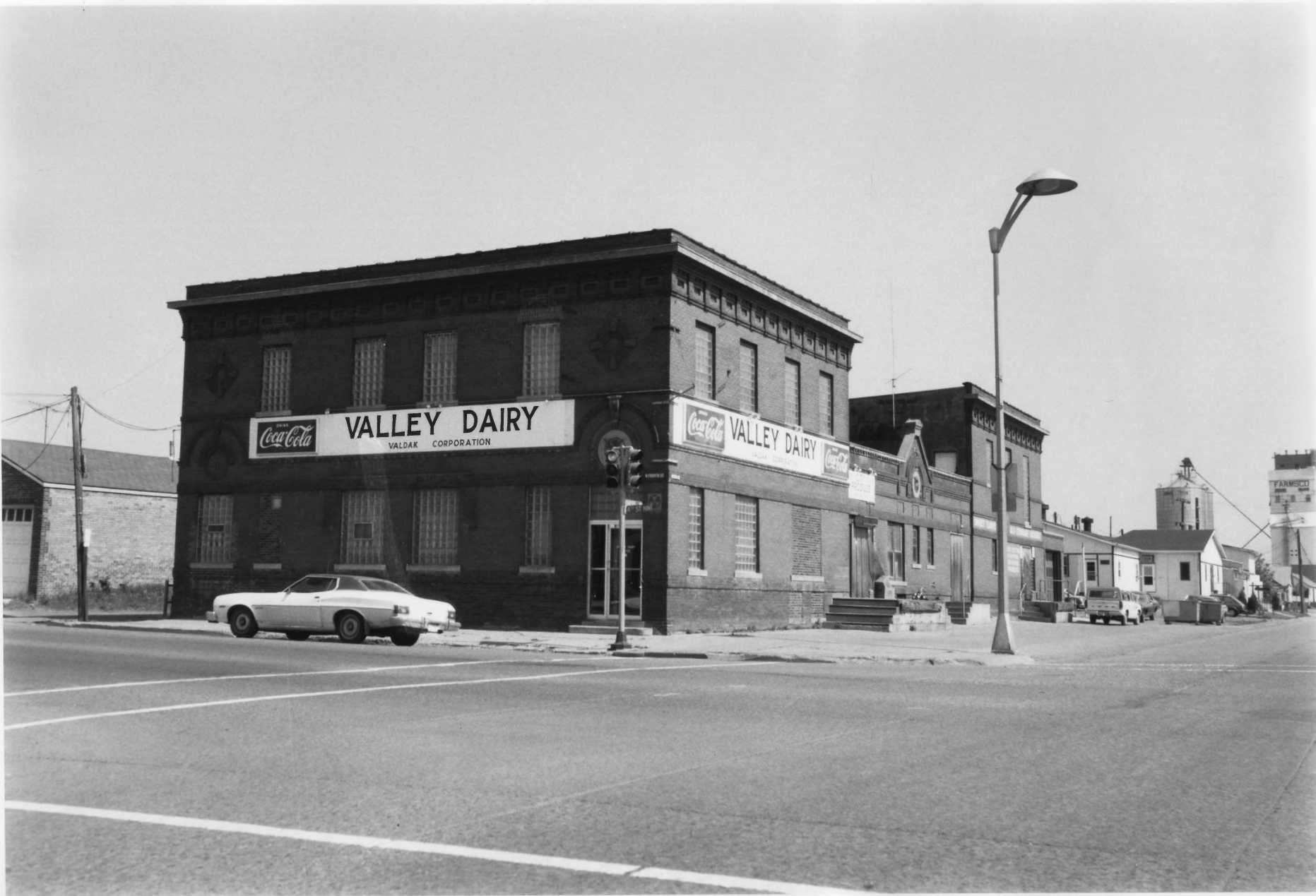
Hamm Brewing Company Beer Depot
East Grand Forks, Polk County, MN
Tom Harvey
1981

Minnesota Historical Society, 690
Cedar St., St. Paul, MN 55101

Looking north
04348/18

NOTICE: This material may be
protected by copyright law
(Title 17 U. S. Code)

FROM THE COLLECTIONS OF THE
MINNESOTA HISTORICAL SOCIETY
THIS PHOTOGRAPH IS FOR REFERENCE USE
ONLY. IT MAY NOT BE REPRODUCED OR
SOLD WITHOUT WRITTEN PERMISSION.



Coca-Cola
VALLEY DAIRY
VALDAK CORPORATION

Coca-Cola
VALLEY DAIRY
VALDAK CORPORATION

FARMSCO

04348 #17

Hamm Brewing Company Beer Depot
East Grand Forks, Polk County, MN
Tom Harvey
1981
Minnesota Historical Society, 690
Cedar St., St. Paul, MN 55101
Looking northeast
04348/17

NOTICE: This material may be
protected by copyright law
(Title 17 U. S. Code)

FROM THE COLLECTIONS OF THE
MINNESOTA HISTORICAL SOCIETY
THIS PHOTOGRAPH IS FOR REFERENCE USE
ONLY. IT MAY NOT BE REPRODUCED OR
SOLD WITHOUT WRITTEN PERMISSION.



04348 # 19

Hamm Brewing Company Beer Depot
East Grand Forks, Polk County, MN
Tom Harvey
1981
Minnesota Historical Society, 690
Cedar St., St. Paul, MN 55101
Detail of Hamm's logo (eagle)
04348/19

NOTICE: This material may be
protected by copyright law
(Title 17 U. S. Code)

FROM THE COLLECTIONS OF THE
MINNESOTA HISTORICAL SOCIETY
THIS PHOTOGRAPH IS FOR REFERENCE USE
ONLY. IT MAY NOT BE REPRODUCED OR
SOLD WITHOUT WRITTEN PERMISSION.