




Anthony Bessey House
Manti, Sanpete County, Utah

1 of

East facade elevation, c. 1940

Photographer: Tax Assessor
Negative filed at Utah State Historical
Society

OCT 22 1980

AUG 18 1980



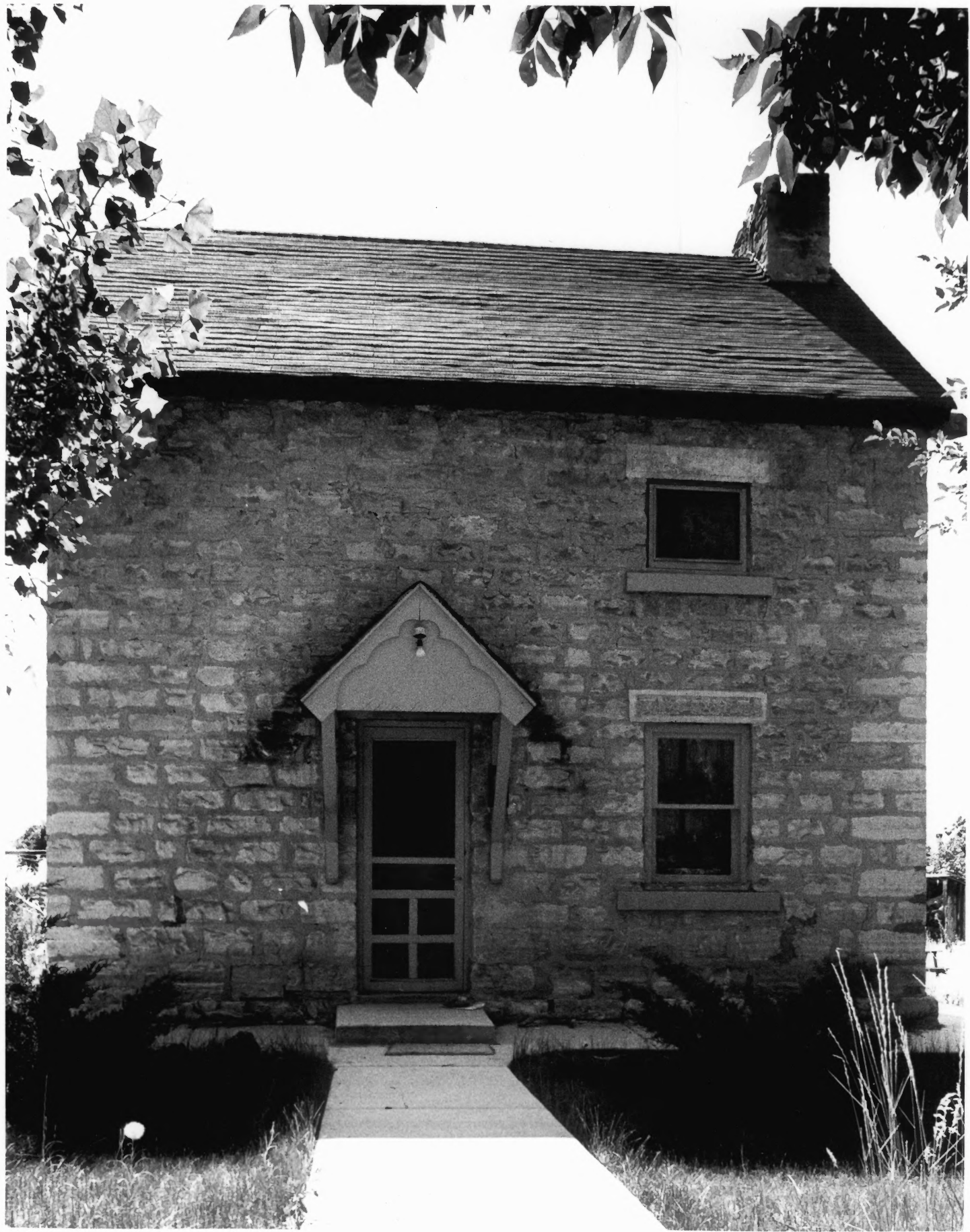

Anthony W. Bessey, House
Manti, Sanpete County, Utah.

OCT 22 1980

(2 of 3) South and east facades

Photographer: Karl Haglund, June 1980
Negative filed at Utah State Historical
Society

AUG 18 1980



Anthony W. Bessey House
Manti, Sanpete County, Utah

OCT 22 1980

(3 of 3) East facade

Photographer: Karl Haglund, June 1980
Negative filed at Utah State Historical
Society

AUG 18 1980