

**United States Department of the Interior
National Park Service**

**National Register of Historic Places
Continuation Sheet**

Section number _____ Page _____

SUPPLEMENTARY LISTING RECORD

NRIS Reference Number: 05000297

Date of Listing: April 20, 2005

Property Name: Shady Grove Baptist Church

County: Jefferson

State: Alabama

The Civil Rights Movement in Birmingham, Alabama, 1933-1979
Multiple Name

This property is listed in the National Register of Historic Places in accordance with the attached nomination documentation subject to the following exceptions, exclusions, or amendments, notwithstanding the National Park Service certification included in the nomination documentation.

for Daniel J. Viskin
Signature of the Keeper

April 20, 2005
Date of Action

Amended Items in Nomination:

Section 8. Statement of Significance

The period of significance is hereby changed to 1958-1963 to more accurately reflect the period in which the church and its congregation played an important role in the Civil Rights movement in Birmingham.

The year 1964 is hereby removed as a significant date.

These changes were discussed with and approved by the National Register staff of the Alabama SHPO.

The Alabama State Historic Preservation Office was notified of this amendment.

DISTRIBUTION:

- National Register property file**
- Nominating Authority (without nomination attachment)**

United States Department of the Interior
National Park Service

National Register of Historic Places
Registration Form

This form is for use in nominating or requesting determinations for individual properties and districts. See instructions in *How to Complete the National Register of Historic Places Registration Form* (National Register Bulletin 16A). Complete each item by marking "x" in the appropriate box or by entering the information requested. If an item does not apply to the property being documented, enter "N/A" for "not applicable." For functions, architectural classification, materials, and areas of significance, enter only categories and subcategories from the instructions. Place additional entries and narrative items on continuation sheets (NPS Form 10-900a). Use a typewriter, word processor, or computer, to complete all items.

1. Name of Property

historic name Shady Grove Baptist Church

other names/site number N/A

2. Location

street & number 3444 31st Way North, Collegeville

N/A not for publication

city or town Birmingham

N/A vicinity

state Alabama

code AL

county Jefferson

code 073

zip code 35207

3. State/Federal Agency Certification

As the designated authority under the National Historic Preservation Act, as amended, I hereby certify that this nomination request for determination of eligibility meets the documentation standards for registering properties in the National Register of Historic Places and meets the procedural and professional requirements set for in 36 CFR Part 60. In my opinion, the property meets does not meet the National Register criteria. I recommend that this property be considered significant nationally statewide locally. (See continuation sheet for additional comments.)

[Signature]
Signature of certifying official/Title

MARCH 3, 2005
Date

State Historic Preservation Office, Alabama Historical Commission
State or Federal agency and bureau

In my opinion, the property meets does not meet the National Register criteria. (See Continuation sheet for additional comments.)

Signature of certifying official/Title

Date

State or Federal agency and bureau

4. National Park Service Certification

I hereby certify that the property is:

- entered in the National Register.
 - See continuation sheet
- determined eligible for the National Register.
 - See continuation sheet
- determined not eligible for the National Register.
- removed from the National Register.
- other,

(explain:)

for Signature of the Keeper

Date of Action

Daniel J. Viera 4/20/05

Shady Grove Baptist Church
Name of Property

Jefferson County, Alabama
County and State

5. Classification

Ownership of Property
(Check as many boxes as apply)

Category of Property
(Check only one box)

Number of Resources within Property
(Do not include previously listed resources in count.)

- private
- public-local
- public-State
- public-Federal

- building(s)
- district
- site
- structure
- object

Contributing	Noncontributing	
1		buildings
		sites
		structures
		objects
1	0	Total

Name of related multiple property listing
(Enter "N/A" if property is not part of a multiple property listing.)
Birmingham Civil Rights Movement, 1933-1978 MPS

Number of Contributing resources previously listed in the National Register
0

6. Function or Use

Historic Functions
(Enter categories from instructions)
RELIGIOUS: church

Current Functions
(Enter categories from instructions)
RELIGIOUS: church

7. Description

Architectural Classification
(Enter categories from instructions)

No Style

Materials
(Enter categories from instructions)

foundation Concrete

walls Stone

roof Asphalt Shingle

other Metal; Wood; Glass

Narrative Description

(Describe the historic and current condition of the property on one or more continuation sheets.)

See continuation sheets.

Shady Grove Baptist Church
Name of Property

Jefferson County, Alabama
County and State

8. Statement of Significance

Applicable National Register Criteria

(Mark "x" in one or more boxes for the criteria qualifying the property for National Register listing.)

A Property is associated with events that have made a significant contribution to the broad patterns of our history.

B Property is associated with the lives of persons significant in our past.

C Property embodies the distinctive characteristics of a type, period, or method of construction or represents the work of a master, or possesses high artistic values, or represents a significant and distinguishable entity whose components lack individual distinction.

D Property has yielded, or is likely to yield, information important in prehistory or history.

Criteria Considerations

(Mark "x" in all the boxes that apply.)

Property is:

A owned by a religious institution or used for religious purposes.

B removed from its original location.

C moved from its original location.

D a cemetery.

E a reconstructed building, object, or structure.

F a commemorative property

G less than 50 years of age or achieved significance within the past 50 years.

Narrative Statement of Significance

(Explain the significance of the property on one or more continuation sheets.)

Areas of Significance

(Enter categories from instructions)

Social History

Ethnic Heritage: African American

Period of Significance

1958-1964

Significant Dates

1958, 1964

Significant Person

(Complete if Criterion B is marked)

N/A

Cultural Affiliation

N/A

Architect/Builder

Rogers, Rev. L. J., builder

9. Major Bibliographical References

Bibliography

(Cite the books, articles, and other sources used in preparing this form on one or more continuation sheets.)

Previous documentation on file (NPS): N/A

preliminary determination of individual listing (36 CFR 67) has been requested

previously listed in the National Register

Previously determined eligible by the National Register

designated a National Historic Landmark

recorded by Historic American Buildings Survey # _____

recorded by Historic American Engineering Record # _____

Primary location of additional data:

State Historic Preservation Office

Other State Agency

Federal Agency

Local Government

University

Other

Name of repository: Birmingham Historical Society

Shady Grove Baptist Church
Name of Property

Jefferson County, Alabama
County and State

10. Geographical Data

Acreeage of Property Less than one acre

UTM References

(Place additional UTM references on a continuation sheet.)

1	<u>16</u>	<u>518180</u>	<u>3713350</u>	3	<u> </u>	<u> </u>	<u> </u>
	Zone	Easting	Northing		Zone	Easting	Northing
2	<u> </u>	<u> </u>	<u> </u>	4	<u> </u>	<u> </u>	<u> </u>

See continuation sheet

Verbal Boundary Description

(Describe the boundaries of the property on a continuation sheet.)

Boundary Justification

(Explain why the boundaries were selected on a continuation sheet.)

11. Form Prepared By

name/title Carroll Van West, with earlier material by Linda Nelson and Marjorie White
organization Center for Historic Preservation date September 18, 2003
street & number Middle Tennessee State University—Box 80 telephone 615-898-2947
city or town Murfreesboro state TN zip code 37132

Additional Documentation

Submit the following items with the completed form:

Continuation Sheets**Maps**

A **USGS map** (7.5 or 15 minute series) indicating the property's location
A **Sketch map** for historic districts and properties having large acreage or numerous resources.

Photographs

Representative **black and white photographs** of the property.

Additional items

(Check with the SHPO or FPO for any additional items.)

Property Owner

(Complete this item at the request of SHPO or FPO.)

name Shady Grove Baptist Church (Rev. Michael Yarbrough)
street & number 3444 31st Way North telephone 205-841-3512
city Birmingham state Alabama zip code 35207

Paperwork Reduction Act Statement: This information is being collected for applications to the National Register of Historic Places to nominate properties for listing or determine eligibility for listing, to list properties, and to amend existing listing. Response to this request is required to obtain a benefit in accordance with the National Historic Preservation Act, as amended (16 U.S.C. 470 *et seq.*)

Estimated Burden Statement: Public reporting burden for this form is estimated to average 18.1 hours per response including time for reviewing instructions, gathering and maintaining data, and completing and reviewing the form. Direct comments regarding this burden estimate or any aspect of this form to the Chief, Administrative Services Division, National Park Service, P. O. Box 37127, Washington, DC 20013-7127; and the Office of Management and Budget, Paperwork Reductions Projects (1024-0018), Washington, DC 20303.

United States Department of the Interior
National Park Service
National Register of Historic Places
Continuation Sheet

7

Page

1

Shady Grove Baptist Church, Jefferson County, AL

VII. Description

Shady Grove Baptist Church sits on an urban lot within the Collegeville neighborhood of Birmingham, just blocks away from its famous neighbor, the Bethel Baptist Church. The building, constructed in 1942 with permastone added to the exterior in c. 1960, is an unadorned gable-front church, measuring approximately 40 feet x 70 feet, with a set-back 35 foot-square ell wing, added c. 1975, off its north elevation. It has a concrete foundation and asphalt shingle gable roof.

The west façade is defined by a pyramidal-roofed square belfry sits on the front roof-beam. It has a symmetrical three-bay gable front with central entry flanked by central windows, which are metal-frame sash, with painted glass. The doors are replacement commercial-style aluminum-and-glass, added for better security c. 1990. A flat metal canopy, c. 1990, is over the entry-bay stoop, which is five steps up from the ground. There is a louvered vent in gable peak; architectural shingle roof. The windows are all metal-frame sash, 2H-over-2H, with painted glass.

The south elevation is five symmetrical bays of all metal frame twelve-over-twelve windows, with painted glass. The wooden handicapped ramp for the front entrance begins along the sidewalk on this elevation. As a side entrance, there is a six-panel metal replacement door with a poured concrete stoop that has a metal stair rail. Also from this elevation, the rear concrete block addition can be seen, with a six-panel metal door with a metal awning.

The north elevation originally was an ell-wing, exhibiting three symmetrical bays of all metal frame, twelve-over-twelve, windows, with painted glass. The last two bays are covered by the ell wing, which was originally composed of a wooden door, with arched six-panel metal door entrance with a keystone, and flanked by twelve-over-twelve windows. This fenestration remains, but in 1975 the congregation expanded the wing with a concrete-block Sunday School rooms/community room addition, which extends the ell on the north side and then wraps across the rear of the building.

The east (rear) elevation is a concrete block wing, with six asymmetrical bays. The northern three bays contain a wooden entrance door, with a low concrete stoop, flanked by metal-frame, two-over-two double-hung windows. The southern three bays are metal-frame, fixed eight-pane windows.

The interior of the church is flat-floored, double aisled down to the dais with central pulpit and sacrament table below; pews number ten to eight to seven from left to right sections, with two pews on each side perpendicular to the rest of the congregation; the choir is in a narrowed chancel area with a gathered curtain behind. The pulpit retains its wood podium and furniture from c. 1960. The plaster walls have faux wood paneling over their lower-half paneling. Original hardwood floors remain, but have been carpeted in the aisles. The ceiling was lowered and acoustical panels and new light fixtures c. 1975.

The church meets the registration requirements for church buildings in the Birmingham's Civil Rights Movement, 1933-1979 MPS. It retains a high degree of integrity in setting, location, materials, workmanship, and association to the alterations and expansion of the building c. 1960, which occurred during its period of significance. The addition of the rather unadorned educational building in 1975 to the rear of the building does not lessen the building's sense of place and time, since the addition's mass, style, and materials do not overwhelm or detract from the architectural quality of the older building.

Archaeological Component

Although no formal archaeological survey has been conducted, the potential for subsurface materials remains.

United States Department of the Interior
National Park Service
National Register of Historic Places
Continuation Sheet

8

Page

2Shady Grove Baptist Church, Jefferson County, AL

VIII. Significance

Shady Grove Baptist Church is eligible for listing in the National Register of Historic Places under Criterion A and the related themes of Social History and Ethnic Identity as a locally significant property associated with the Alabama Christian Movement for Human Rights and the Civil Rights Movement in Birmingham from 1956 to 1963.

The congregation dates to the beginning of settlement in the Collegeville neighborhood, a middle class and working class African-American neighborhood, and was organized in 1902 by Reverend S. M. Smart as one of the early African-American Baptist congregations in Collegeville. Compared to their fellow Baptists at nearby Bethel Baptist Church, the members of Shady Grove Baptist were largely working class, and their small, unadorned building speaks to their socio-economic status. The congregation, for its first forty years, held services in a small "shotgun" style dwelling; in 1942, under the direction of Rev. Lewis J. Rogers, they raised the funds and began to construct the present building. In c. 1960, the congregation updated their building's utilities and covered the concrete exterior in permastone, again under the direction of Rev. Rogers.

Shady Grove Baptist Church is an outstanding example of the smaller, working-class based congregations that supported the Alabama Christian Movement for Human Rights from 1956 to 1963. Rev. Lewis J. Rogers was an active member of the ACMHR hierarchy, serving on the organization's advisory committee as early as 1958 and as the ACMHR finance chairman in 1964. During these years of activism, Rev. Rogers also led the fundraising drive to cover the plain concrete block building with permastone, giving it a more appealing façade. Many members of the congregation regularly attended and participated in ACMHR meetings. While the unassuming church was too small to host a regular ACMHR meeting, congregation members, under Rev. Rogers' watchful eye, met here and planned how they would participate in the mass demonstrations of Project C in the spring of 1963. Rev. Rogers also held meetings of the ACMHR finance committee at the church, and these meetings developed strategies to raise the necessary funds to help pay the organization's large legal costs. The strategy sessions also were important tools of oral communication for a society that had few other public options, since open discussion of civil rights strategies over the airwaves or in print could provoke severe reactions from white extremists. Furthermore, activists knew that to reach the core working-class residents of their neighborhoods, meetings in the churches were much more effective venues than print or electronic media. It was thus at the churches where activists relayed the important messages and key strategies to be debated and carried out. The churches were safe havens in an often hostile environment.

The success of the Project C demonstrations spurred a higher level of public support from the church for the movement. In 1964, Rev. Rogers bought a quarter-page ad in the ACMHR *Annual Report*, and included his likeness and identification as "Chairman: ACMHR Finance Department." With the passage of the Voting Rights Act of 1965, the congregation later conducted Voter Registration information sessions and registration drives at the church.

Shady Grove Baptist Church meets the registration requirements for Criterion A as a locally significant strategy center. Congregation members held strategy sessions here in 1963 about their roles in the Project C demonstrations. Rev. Rogers also held ACMHR Finance Committee meetings at the church in order to raise funds to support legal challenges to segregation and to provide bail for jailed demonstrators and ACMHR officials.

United States Department of the Interior
National Park Service
National Register of Historic Places
Continuation Sheet

9, 10 Page

3

Shady Grove Baptist Church, Jefferson County, AL

IX. Bibliography

Annual Report, 1958, Alabama Christian Movement for Human Rights. Birmingham: ACMHR, 1958.

Annual Report, 1964, Alabama Christian Movement for Human Rights. Birmingham: ACMHR, 1964.

Hendricks, Lola. Interviews with author October 2001. Interviews at Birmingham Historical Society and Birmingham Civil Rights Institute. Notes in possession of the author.

Fieldwork notes, July 23, 2003. In possession of the author.

Shady Grove Baptist Church Files, Birmingham Historical Society Civil Rights Collection-Alabama Christian Movement for Human Rights and Civil Rights Churches Files, Birmingham Historical Society, Birmingham, Alabama. Files include Board of Equalization Records, City Directory Trace, and Photographs.

White, Marjorie L., *A Walk to Freedom-The Reverend Fred Shuttlesworth and the Alabama Movement for Human Rights.* Birmingham: Birmingham Historical Society, 1998.

X. Verbal Boundary Description and Justification

The nominated boundaries of Shady Grove Baptist Church at 3444 31st Way North, Collegeville, are represented by Lots 12 and 13, WJ Ryan addition, of Collegeville as noted in the attached Jefferson County Tax Map 01-22-13-1, Sections NE ¼ 13, Township 17 South, Range 3 West. The boundaries contain all of the historic property significantly associated with the Shady Grove Baptist Church.

United States Department of the Interior
National Park Service
National Register of Historic Places
Continuation Sheet

Photographs Page

4

Shady Grove Baptist Church, Jefferson County, AL

Shady Grove Baptist Church
Birmingham, Jefferson Co., AL
Photos by Carroll Van West (exterior)
MTSU Center for Historic Preservation
July 2003
Photos by Michelle Crunk (interior)
Birmingham Historical Society
January 2000

Negatives: Alabama Historical Commission
468 South Perry
Montgomery, AL

West façade, facing southeast
1 of 12

West façade, facing east
2 of 12

South elevation, facing north
3 of 12

South elevation, facing northwest
4 of 12

East elevation, facing southeast
5 of 12

North elevation, facing south
6 of 12

Front of church, facing north, showing nearby industrial smokestack
7 of 12

Sanctuary, facing east
8 of 12

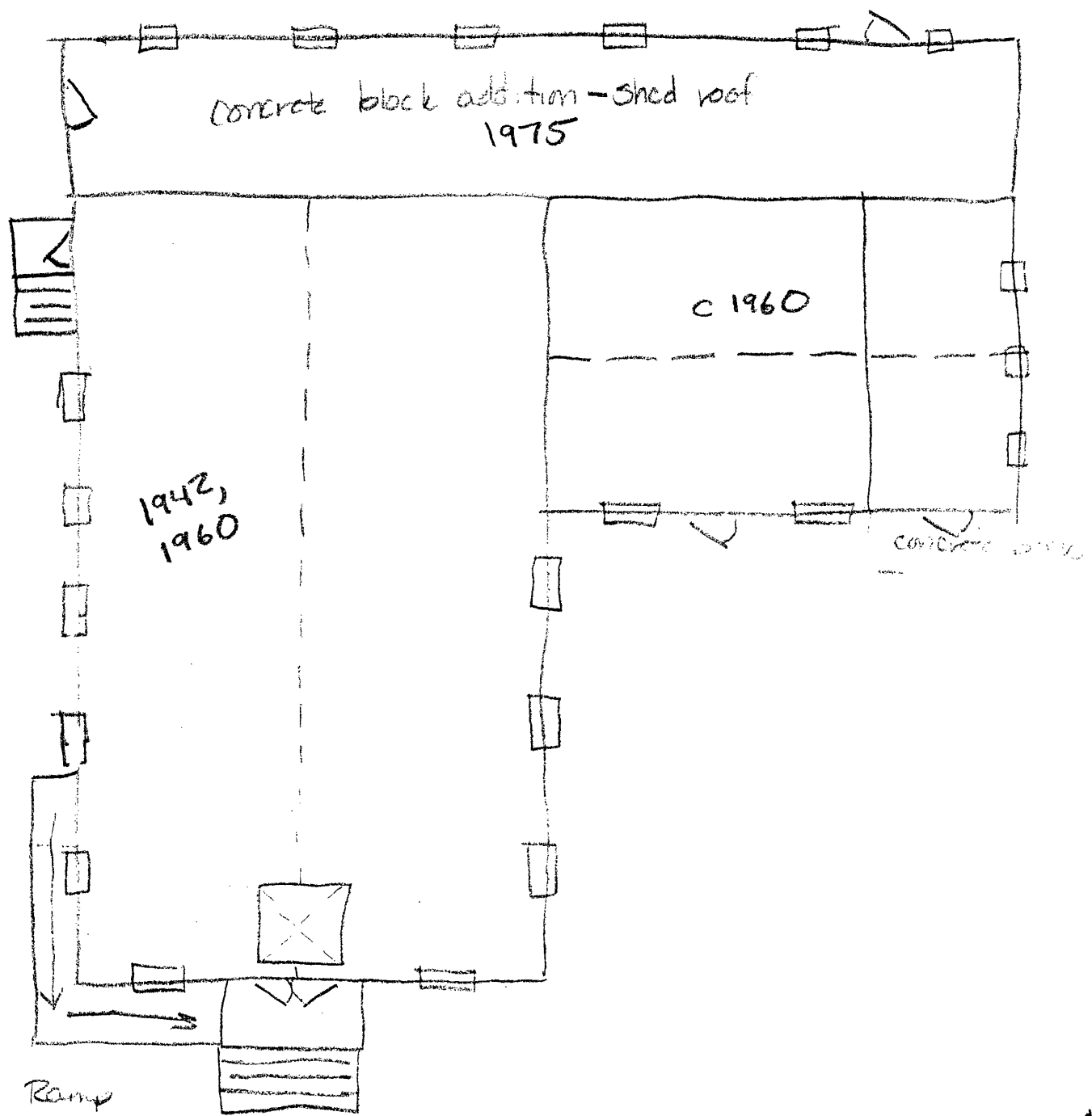
Pulpit and choir, facing east
9 of 12

Sanctuary, interior wall, facing south
10 of 12

Sanctuary, interior wall, facing north
11 of 12

Sanctuary, facing west
12 of 12

Shady Grove Baptist Church
Collegesville



N ↑
NTS: 2003