

KENTUCKY HISTORIC RESOURCE INVENTORY SUPPLEMENT
BOUNDARY AND LOCATION INFORMATION

Historic Property Name Paintsville City Hall Site # JO-P-18
Multiple Resource/Thematic Nomination Title MULTIPLE RESOURCES OF JOHNSON COUNTY

U.T.M. Coordinates - List multiple UTMs if property is ten or more acres.

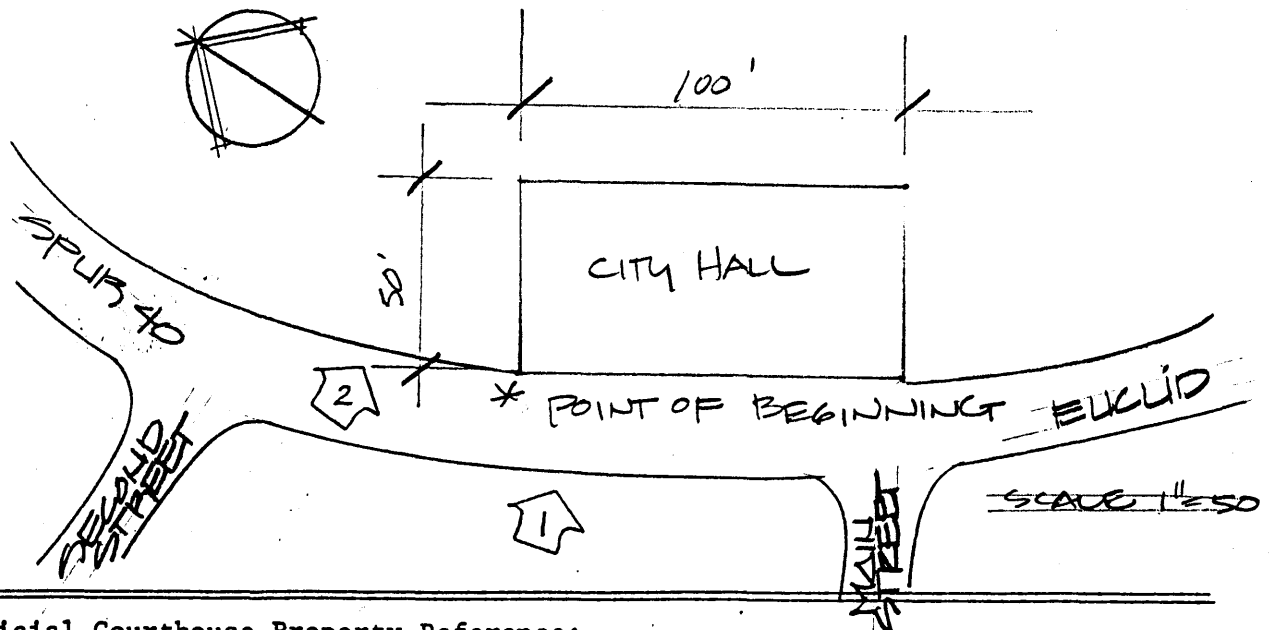
A. _____ D. _____
B. _____ E. _____
C. _____ F. _____

Verbal Boundary Description Acreage .22

From a point in the east corner of the front facade of the City Hall on the Spur of KY 40; then north 50 feet to a point; then east 100 feet to a point; then south 50 feet to a point; then west 100 feet to the point of beginning.

The boundary includes all of the space associated with City Hall and contains one contributing building.

Sketch of Site Plan (Showing outbuildings, structures, landscape features and the site boundary as described above.)



Official Courthouse Property Reference: