

United States Department of the Interior  
National Park Service

DEC 26 1989

# National Register of Historic Places Registration Form

This form is for use in nominating or requesting determinations of eligibility for individual properties or districts. See instructions in *Guidelines for Completing National Register Forms* (National Register Bulletin 16). Complete each item by marking "x" in the appropriate box or by entering the requested information. If an item does not apply to the property being documented, enter "N/A" for "not applicable." For functions, styles, materials, and areas of significance, enter only the categories and subcategories listed in the instructions. For additional space use continuation sheets (Form 10-900a). Type all entries.

### 1. Name of Property

historic name Thompson Street School (preferred)  
other names/site number New Bedford Community Center

### 2. Location

street & number 58 Crapo Street N/A not for publication  
city, town New Bedford N/A vicinity  
state Massachusetts code MA county Bristol code 005 zip code 02740

### 3. Classification

Ownership of Property	Category of Property	Number of Resources within Property	
<input type="checkbox"/> private	<input checked="" type="checkbox"/> building(s)	Contributing	Noncontributing
<input checked="" type="checkbox"/> public-local	<input type="checkbox"/> district	<u>1</u>	<u>      </u> buildings
<input type="checkbox"/> public-State	<input type="checkbox"/> site	<u>      </u>	<u>      </u> sites
<input type="checkbox"/> public-Federal	<input type="checkbox"/> structure	<u>      </u>	<u>      </u> structures
	<input type="checkbox"/> object	<u>1</u>	<u>      </u> objects
			<u>      </u> Total

Name of related multiple property listing: N/A  
Number of contributing resources previously listed in the National Register 0

### 4. State/Federal Agency Certification

As the designated authority under the National Historic Preservation Act of 1966, as amended, I hereby certify that this  nomination  request for determination of eligibility meets the documentation standards for registering properties in the National Register of Historic Places and meets the procedural and professional requirements set forth in 36 CFR Part 60. In my opinion, the property  meets  does not meet the National Register criteria.  See continuation sheet.

Valerie A. Talmage Dec. 15, 1989  
Signature of certifying official Executive Director, Massachusetts Historical State Historic Preservation Officer Date Commission;

State or Federal agency and bureau \_\_\_\_\_

In my opinion, the property  meets  does not meet the National Register criteria.  See continuation sheet.

Signature of commenting or other official \_\_\_\_\_ Date \_\_\_\_\_

State or Federal agency and bureau \_\_\_\_\_

### 5. National Park Service Certification

I, hereby, certify that this property is:

entered in the National Register. Entered in the National Register  
 See continuation sheet. 1/26/90

determined eligible for the National Register.  See continuation sheet.

determined not eligible for the National Register.

removed from the National Register.

other, (explain): \_\_\_\_\_

for Signature of the Keeper Date of Action \_\_\_\_\_

**6. Function or Use**

Historic Functions (enter categories from instructions)  
Education / School

Current Functions (enter categories from instructions)  
Education / Library  
Social / Civic

**7. Description**

Architectural Classification  
 (enter categories from instructions)

Late Victorian

Materials (enter categories from instructions)

foundation Granite  
 walls Brick, Granite, Terra Cotta

roof Asphalt, Slate, Copper  
 other Wood

Describe present and historic physical appearance.

The Thompson Street School, built 1884-85, is an eight-room, two-and-one-half-story brick structure with full basement and attic. The school is located on the southwest corner of Thompson and Crapo Streets. The portion of the lot to the east and north of the school is covered with asphalt and the remaining portion is covered with grass, trees and shrubs. The property is bordered on the two street sides by squared-off curbs of Rockport granite; a chainlink fence completely surrounds the site. The school is set back from Thompson Street on the south by approximately fifteen feet and from Crapo Street on the west by approximately fifty feet. Residential lots are located approximately twenty-two feet to the north and sixty feet to the east of the school. The school was originally oriented on a north-south axis with the main entrance on the south side. Since remodeling of the school in 1976, the main entrance is now on the west side, the south entrance having been bricked in. All future references to the front, back, etc., will be in relation to its original design. The neighborhood is a thickly-settled residential area, developed from the last third of the nineteenth century and the first quarter of the twentieth century.

The building is composed of two long (east-west) rectangular blocks, one in back of the other, the back (north) block being smaller than the front (south). A smaller block extends on each of the east and west elevations where the two rectangles meet; these portions house side entrances and stairways. Another small mass protrudes from the center of the front elevation for the main entrance and bell tower. The roof on the south entrance block is mansard-style, while the roof of the rest of the building is truncated. A single brick-pedimented dormer, framed in granite, is set into the roof. The gable of the dormer is basket-weave brickwork with a smaller arched design of the same pattern over the center of the three windows. Each of these wood-frame windows are six over one and are separated by granite pilasters. On either side of the lower portion of the inset dormer are two recessed panels of brick surrounded by brick pilasters. At the top of the panels, bricks step out to meet the bottom of the mansard roof. These corbelled panels are repeated on the sides of the tower. Atop this tower originally sat an open wooden bell tower, crowned with a gilt eagle vane (taken down c. 1960). A wooden gabled dormer protrudes from the roof of the

See continuation sheet

United States Department of the Interior  
National Park ServiceNational Register of Historic Places  
Continuation SheetSection number 7 Page 1Thompson Street School  
New Bedford, MA

main building on either side of the tower. Two tall, slender windows, eight over one, are set into each of the dormers. Above the windows is a simple, stick-style wood pattern; three brackets adorn the underside of the gable. The two dormers on the back of the building are identical to those on the front. Two dormers are also found on each of the sides. The dormer that sits on the front-most section is identical to those on the front and back, while the second dormer, which sits atop each of the side stairway extensions, differs only in the addition of a third window. The entire roof was reroofed in 1976 with asphalt shingles, which have replaced the original slate. Two hipped skylights rest atop the flat portion of the roof towards the front. The roof is also punctured by ventilation shafts and two corbelled chimneys of brick. All roof joints are flashed in copper, while gutters are of the same material.

The walls of the school are of red Philadelphia brick; the building rests on a rough native granite foundation. Three granite belt coursings run around the entire building: one at the sill-line of the first-floor windows, one at the sill-line of the second-floor windows, and the third along the top of the second-floor window transoms. The lintels of the first-floor windows are also of granite. Along the cornice-line run alternating panels of terra-cotta floral relief and decorative brickwork. All these horizontal elements unite the jumbled massing of the building.

The main entrance consists of an arched entry and two side arched openings; these spaces, which were originally part of an open-air vestibule, were bricked in and the stairs, which were of Concord granite, were removed in 1976. The multi-color encaustic tiling of the entryway floor remains. The entry arches are of decorative brickwork with terra cotta floral keystones. Above the two side arches are insets, each with a human bust. A granite globe and its surrounds interrupt the middle belt coursing, below which runs a string of terra-cotta floral patterns. Above the globe is a small, one-light wood-frame window with an eight-light transom. On either side of this window is a wood-frame, double-hung window of nine over three lights with a sixteen-light transom. A granite block lies atop the belt coursing over each of the windows: one is carved with "AD" and the other with "1884". A semi-circle of basket-weave bricks rests on the coursing over the central window.

Side entrances lie on the east and west facades of the respective east and west extensions. Three decorative arches with terra cotta floral keystones span the width of the extensions. The entry is recessed into the frontmost (southern) archway. The doors of the west entry are of aluminum and glass with a semi-circular transom of one light, while the doors of the east entry are solid aluminum with the original six-light, wood-frame, semi-circular transom. The original, carved wood and glass panel doors were removed in 1985 and are stored in the basement. They originally had bronze hinges and have

(continued)

United States Department of the Interior  
National Park ServiceNational Register of Historic Places  
Continuation SheetSection number 7 Page 2 Thompson Street School  
New Bedford, MA

been painted pink. Each of the archways on the face of the building were originally open, but wrought-iron gates and transoms have been added. The multi-color encaustic tile of the entryway floors are identical to that of the front. Wood-frame windows lie in the center of the other two archways in each series; the windows are double-hung with six over two lights. Basement windows lie boarded in the foundation beneath the two windows. The stairs of the east side are of original Rockport granite, but they were replaced on the west side with an unsympathetic stairway and handicap access ramp of concrete in 1976. Above each of the archways on both sides of the building is a six over two, double-hung, wood-frame window with a ten-light transom. On the south faces of these entryway portions are tall slender recessions, one on each floor, inserted to break the monotony of a plain surface. On the north face of each of these extensions are two stairway windows halfway between floors. The windows are united by a common sill, granite lintel and a low arch of decorative brick. A basement entrance lies in the foundation of the building, a few steps down from ground level. The doors are wood and the entryway sheds were removed in 1976.

On the front (south) elevation, on either side of the tower, is a series of four windows on each floor, the central two windows of each series almost twice as wide as those on the ends. The central windows are nine over three with fourteen-light transoms. The end windows are six over two with ten-light transoms. The granite lintels of the central windows on the first floor are united and serve as the base for a low arch of inlaid brick. Below each of the end windows are boarded basement windows in the foundation.

On the front portion of each of the sides is another series of four windows on each floor, but all are identical. They consist of six over two lights with ten-light transoms. Each pair of windows on the first floor are joined by a granite lintel and a low brick arch. Boarded basement windows lie in the foundation below each window. On the rear portion of each side are two windows on each floor, identical to the other side windows. The first-floor windows are again united by lintel and arch. A boarded basement window lies beneath the northernmost window on each side, while a basement entrance lies beneath the other window. Once again, the shed entrance has been removed. The rear facade consists of two sets of four windows identical to those on the front with boarded basement windows beneath each. First-floor windows are protected by metal screens added in 1977-1978.

The school was originally built with four classrooms on each floor. A wide hall runs east-west from one side entrance to the other on the first floor; another hall runs from the main entrance back and meets the east-west hall at the center of the building. The classrooms are in each of the corners of the building, allowing for windows on two sides. Each classroom has a small closet for teacher storage and two walk-through coat closets that open on both the hall and the classroom. Each room also has a door that opens directly

(continued)

United States Department of the Interior  
National Park ServiceNational Register of Historic Places  
Continuation SheetSection number 7 Page 3Thompson Street School  
New Bedford, MA

onto the hallway. The second floor configuration is the same, with the addition of a small teachers' room in the tower over the front entrance. The room originally boasted a small marble sink. All the walls are covered with matchboard wainscoting to the window-sill level with plaster above. All doors have four recessed panels with a one-light transom above. All doors and windows are framed in wood. All entrances are framed arches with decorative motifs in the corners of the frames. All floors are of ash. An open stairway with cherry newel posts, balusters, and railings graces each of the east and west entrance halls. Access to the basement is gained through a door beneath the stairway. The stairways to the basement are finished with matchboard wainscoting; both lead down to a large open room that, together, occupy two-thirds of the space to the rear of the building. The back of the east room is partitioned for the boiler room. Each large room has a storage area near the bottom of the stairs, along the outside wall. The front room on the west side was originally used as a bathroom, while the front space on the east side is divided into two storage areas. The walls in the basement are either granite or brick. Like those to the basement, the stairways from the second floor to the attic are enclosed and finished with matchboard wainscoting. The attic is basically unfinished, except for two classrooms in the front of the building that are finished with wood panelling. These rooms may have been used for extra meeting space. The main attic space is interrupted only by pine support pillars.

Alterations were made to the building in 1976 to convert the school to a community center and library. The front entrance vestibule has been bricked off and now serves as a storage area; one door has replaced the double entrance door to the main hallway. A partition has been erected one-third of the way down the hall from the front to form a conference area. The rest of this hall houses bookshelves and carrels. A wall and doorway has also been constructed at the east end of the east-west hallway to the west of the staircase. Another wall and door was erected at the west end of the same hall, approximately ten feet east of the stairs. Both of these new doors are flanked by one-light windows. The latter door is the main entrance to the Casa Da Saudade Library. A control desk is located just inside of the door, while stacks have been erected throughout the rest of the hallway. The removal of one coat closet and half of the south wall of the northeast classroom has allowed for continuity of space between this room and the hallway. Scattered around this room are numerous stacks and a few tables and chairs. Three walls have been constructed in the southeast classroom, resulting in a children's room with stacks and tables that occupy two-thirds of the entire space. The remaining space is divided into three sections: the northeast corner of the room is now an office, the center area just to its south is for storage, and the southeast corner of the original room is now a lounge. All of these areas open only to the hallway. Stacks have been placed in the eastern third of the southeast classroom, now used as a workroom and

(continued)

**United States Department of the Interior  
National Park Service**

**National Register of Historic Places  
Continuation Sheet**

Section number 7 Page 4

Thompson Street School  
New Bedford, MA

storage area for staff. The remaining portion has been converted to men's and women's restrooms, accessible from the west entryway. The northwest classroom is a large, open office/meeting area for the Center for Immigrant Assistance. The removal of a hallway wall to a coat closet makes the center directly accessible from the west entrance vestibule formed by the new wall in the hallway.

On the second floor, partitions have been erected ten feet down the hall from each stairway; each partition includes a single doorway. Part of the coat closet walls on the hallway of each of the north classrooms has been removed to allow direct access to the stairway vestibules. The northeast room is now used as a meeting room, while instruction is the main function of the northwest room. A wall runs north-south down the center of the southwest classroom, allowing for two teaching areas. The southeast classroom now serves as an office for the Luzo-American Soccer Association. The teachers' room at the front of the building also serves as an office. The only other alteration on this floor has been the construction of a storage closet in the hallway near the teachers' room, done prior to the 1976 remodeling. The attic remains as it was, and the basement is not in use.

Throughout the building, most of the woodwork has been painted with contemporary colors. The transoms above the windows have either been covered with wood or painted over. The windows of the attic and basement are either missing or badly in need of repair.

(continued)

BRICK TOWN HOME  
NOW, COTTON FIBER

United States Department of the Interior  
National Park Service

**National Register of Historic Places  
Continuation Sheet**

Section number 7 Page 5 Thompson Street School  
New Bedford, MA

---

Archaeological Description

While no prehistoric sites are currently recorded on the property, it is possible that sites are present. The school's close proximity to the original New Bedford harbor shoreline may indicate favorable locational criteria for prehistoric settlement and subsistence. In general, however, the potential for significant archaeological remains, either prehistoric or historic, seems low, as a result of small lot size and the fact that the building, which has a full basement, covers most of the parcel. Asphalt paving covers much of the remaining portion of the property.

(end)

**8. Statement of Significance**

Certifying official has considered the significance of this property in relation to other properties:

nationally     statewide     locally

Applicable National Register Criteria     A     B     C     D

Criteria Considerations (Exceptions)     A     B     C     D     E     F     G

Areas of Significance (enter categories from instructions)

Architecture  
Community Planning & Development  
Education  
Social History

Period of Significance

1884-1920

Significant Dates

1884-1885

Cultural Affiliation

N/A

Significant Person

N/A

Architect/Builder

Brownell, Alfred J. and  
Murkland, James H.

State significance of property, and justify criteria, criteria considerations, and areas and periods of significance noted above.

The Thompson Street School meets National Register Criteria A and C in that it was one of twelve schools erected in a twenty-year span in response to the rapid growth of the city stimulated by new industry. The school is also an example of a unique blend of architectural elements, most notably Romanesque, Queen Anne, and Stick. Its significance extends even to recent years as the first public ethnically-oriented library in the United States.

New Bedford in the last third of the nineteenth century was a city in transition. The glamorous, prosperous days of whaling, which peaked in the 1860s, were soon just memories. But as whaling faded away, a new industry, manufacturing, rose to take its place. Manufacturing had roots in the city back to the 1840s, but its journey to prominence greatly accelerated from the 1870s and 1880s. In the next forty years New Bedford's population skyrocketed--from almost 27,000 in 1880 to over 120,000 in 1920. Many of those who settled in the city were of direct European origin, predominantly Portuguese. With dreams of prosperity they came to America to work in such mills as the Pairpoint Manufacturing Company, Grinnell Manufacturing Company, Acushnet Mills Corporation, Hathaway Manufacturing Company, City Manufacturing Company, the Howland Mills and Bennett Manufacturing Company, all of which were founded in New Bedford in the 1870s and 1880s. One of the consequences of this great influx of workers and their families was the overcrowding of the public schools. The public school system was extant from the time New Bedford separated from Dartmouth in 1787 and was composed of small neighborhood schools that lent a comfortable, familiar air to the classroom. By 1843 a four-tier system was in place: primary schools for children between four and seven years of age, intermedial schools for seven-to-ten-year-olds, common or grammar schools for children over ten, and the high school for those over twelve. To ease the overcrowding that accompanied the rise of manufacturing, the city built twelve new schools in a period of twenty years (1878-1898). All were of brick, a material first used for a public school in New Bedford at the Middle Street School in 1844.

See continuation sheet

**9. Major Bibliographical References**

Ellis, Leonard Bolles. History of New Bedford and its Vicinity, 1602-1892. Syracuse, NY: Mason & Co., 1892.

Boss, Judith A. and Joseph D. Thomas. New Bedford: A Pictorial History. Norfolk, VA: Donning Co., 1983.

City Documents, 1870-1920, including Schools Report and Superintendent of Schools Report.

Standard-Times and Evening Standard files-- Thompson Street School and Casa Da Saudade.

New Bedford Street Directories, 1875-1969.

Deed transfers, Registry of Deeds/ Bristol County, Massachusetts.

See continuation sheet

Previous documentation on file (NPS):

- preliminary determination of individual listing (36 CFR 67) has been requested
- previously listed in the National Register
- previously determined eligible by the National Register
- designated a National Historic Landmark
- recorded by Historic American Buildings Survey # \_\_\_\_\_
- recorded by Historic American Engineering Record # \_\_\_\_\_

Primary location of additional data:

- State historic preservation office
- Other State agency
- Federal agency
- Local government
- University
- Other

Specify repository:

MHC; New Bedford Public Library;  
Standard-Times Library

**10. Geographical Data**

Acreage of property 0.5 acres

UTM References

A 19 339455 4609330  
 Zone Easting Northing

C         

B           
 Zone Easting Northing

D         

See continuation sheet

Verbal Boundary Description

The property is located on Lot 96, Plat 30. From the northeast corner of Thompson and Crapo Streets, the property extends 189.2 ft. east along Thompson St. to the west boundary of Lot 98, then north 188.75 ft. along this line and the western boundary of Lot 97 to the southern boundary of Lot 300; it then runs west along this line and the southern boundary of Lots 94 and 298 for 177.65 ft. to Crapo St., then south 118.9 ft. along Crapo Street to the origin.

See continuation sheet

Boundary Justification

Entire lot was purchased by the City of New Bedford from General James D. Thompson for the erection of a school.

See continuation sheet

**11. Form Prepared By**

name/title Christopher S. Reed, City of New Bedford w/ Anne Tait, Acting National Register Dir.  
 organization Massachusetts Historical Commission date August 10, 1988  
 street & number 80 Boylston Street telephone (617) 727-8470  
 city or town Boston state MA zip code 02116

United States Department of the Interior  
National Park ServiceNational Register of Historic Places  
Continuation SheetThompson Street School  
New Bedford, MASection number 8 Page 1

One of the areas that experienced some of the greatest growth was the South End of the city, what is now considered the south-central section. Among the new mills established in the southern portion of New Bedford were the Hathaway Manufacturing Company, the Potomska Mills, the City Manufacturing Company, and the Morse Twist Drill and Machine Company. Improvements in public transportation around this time were designed to make it easier to get to the mills, but even a five-cent toll was a burden to many low-paid workers. As a result, workers were forced to live within walking distance of their place of employment.

The Thompson Street School stands in the south-central section of New Bedford as a material representation of the early growth of this area spurred on by the mills. The land was sold to the city by General James D. Thompson in 1884 and was originally part of his large South End farm. General Thompson was the most prominent military figure in New Bedford in his time. He attended the United States Military Academy at West Point beginning in 1825, but resigned after a year and a half due to his poor health. Thompson resumed service when elected ensign of the New Bedford Light Infantry Company in May of 1828. He rose in rank quite rapidly, earning a major-generalship in 1835 at the age of 28.

General Thompson entered politics in the 1830s and was elected to the Board of Selectmen, but later moved on to a higher realm as the Democratic candidate for Lieutenant Governor. His political career reached its apex in 1835, when he was an elector to the National Presidential Convention. General Thompson was one of twenty prominent Democrats whose names were placed in a hat, the last name drawn being the nominee. Franklin Pierce won the honor of the nomination and went on the lead a successful campaign for the White House, but Thompson came very close--his being the third from last name drawn. Described as "a most approachable and congenial man," General Thompson was honored as chief marshal of the Fourth of July parades for many years.

The school that was built on his property was designed and built in 1884-85 by the contractors Brownell & Murkland of this city. Unfortunately, no other information pertaining to the firm or either of the men can be found. The grammar school initially served a predominantly English and Irish area, where surnames like Russell, Ashley, and O'Neill were standard. As the mills attracted more and more people to the city, the ethnic make-up of the neighborhood continued to evolve. A heterogeneous mixture of English, French, Portuguese, and a few Irish was achieved by 1902, but this heterogeneity gradually gave way to a homogeneity of Portuguese by the middle twentieth century. Deteriorating conditions and almost a decade of school department pressure finally closed the Thompson Street School in June of 1958. The delay was due to the parents of the kindergarten-through-third-grade children, concerned about the extra distance to their new schools and the busy streets

(continued)

United States Department of the Interior  
National Park Service

National Register of Historic Places  
Continuation Sheet

Section number 8 Page 2

Thompson Street School  
New Bedford, MA

that would have to be crossed. The school continued to be maintained, however, and a remodeling of the building for use by the Greater New Bedford Chapter for Retarded Children was proposed the summer after its closing. Apparently the conversion never took place, for the school was reopened on an interim status when the Harrington Memorial School burned in 1960.

Neighborhood and city-wide pressure for a bilingual and non-English-speaking school reopened classrooms for just over a decade beginning in 1963. In 1976 the building under-went another transition to better serve the needs of the neighborhood and the city. Established in the school was the New Bedford Community Center, home to the Casa Da Saudade Library, the Center for Immigrant Assistance, and the Luzo-American Soccer Association.

The center's primary tenant, the Casa Da Saudade, symbolizes the important role the Portuguese have played in the city's history. The library, devoted to immigrants from the Azores, Cape Verdes, Madeira, and mainland Portugal, houses books of Portuguese culture and books in the Portuguese language. Founded in a nearby storefront in 1971 with federal and city funds, the "House of Nostalgia," as its name translates, was designed to serve as a comfortable refuge for immigrants who were homesick or were trying to acclimate themselves to their new environment. Although private ethnically-oriented libraries had been founded throughout the country, this was the first such public library in America. By 1973 it had become a center for Portuguese culture and research, receiving inquiries from around the country. The dedication of its new home on Thompson and Crapo Streets was celebrated on April 18, 1977; the occasion was marked by many ethnic festivities, most notably dancing by the Cape Verdean Folkloric Troupe.

Once the peaceful farmland of a noted military figure who served his city and his country, the Thompson Street Schoolhouse served to prepare its evolving neighborhood residents for life in the city and beyond. The Casa Da Saudade and the New Bedford Community Center have adapted themselves to a new home, while they continue to perpetuate the ideals of public service and education which have lingered on that site for over a century.

(end)

**BONNEY**  
RES. C

40	40	40	40	40
81	82	83	84	85
13.16	12.32	9.12	9.15	16.12
35.83	3354	2483	2494	4389
13.0	13.0	13.0	13.0	13.0
35.16	35.16	35.16	35.16	35.16
106.92	106.92	106.92	106.92	106.92
288	288	288	288	288
106.92	106.92	106.92	106.92	106.92
72	72	72	72	72
24.71	24.71	24.71	24.71	24.71
6727	6727	6727	6727	6727
106.92	106.92	106.92	106.92	106.92
50.7	50.7	50.7	50.7	50.7
2124	2124	2124	2124	2124

**THOMPSON**  
RES. C

45	45	45	45	45
280	190	301	286	279
14.36	13.22	13.22	13.22	13.22
3910	3600	3600	3600	3600
52.75	45	45	45	45
283	283	283	283	283
16.24	16.24	16.24	16.24	16.24
44.21	44.21	44.21	44.21	44.21
102.01	102.01	102.01	102.01	102.01
191	191	191	191	191
12.04	12.04	12.04	12.04	12.04
3278	3278	3278	3278	3278
68.74	68.74	68.74	68.74	68.74
192	192	192	192	192
10.97	10.97	10.97	10.97	10.97
2987	2987	2987	2987	2987
72.3	72.3	72.3	72.3	72.3
194	194	194	194	194
10.93	10.93	10.93	10.93	10.93
2976	2976	2976	2976	2976
193	193	193	193	193
10.76	10.76	10.76	10.76	10.76
273	273	273	273	273
8.76	8.76	8.76	8.76	8.76
2391	2391	2391	2391	2391
193	193	193	193	193
10.76	10.76	10.76	10.76	10.76
273	273	273	273	273
8.76	8.76	8.76	8.76	8.76
2391	2391	2391	2391	2391

**SYLVIA CT.**

**STANTON CT.**

96	96	96	96	96
80.00	80.00	80.00	80.00	80.00
21700	21700	21700	21700	21700
1892	1892	1892	1892	1892
61.25	61.25	61.25	61.25	61.25
14.40	14.40	14.40	14.40	14.40
3920	3920	3920	3920	3920
298	298	298	298	298
58.6	58.6	58.6	58.6	58.6
297	297	297	297	297
43.7	43.7	43.7	43.7	43.7

**HALL**

108	108	108	108	108
13.85	13.85	13.85	13.85	13.85
13770	13770	13770	13770	13770
100	100	100	100	100
108	108	108	108	108
13.85	13.85	13.85	13.85	13.85
13770	13770	13770	13770	13770
100	100	100	100	100
108	108	108	108	108
13.85	13.85	13.85	13.85	13.85
13770	13770	13770	13770	13770
100	100	100	100	100
108	108	108	108	108
13.85	13.85	13.85	13.85	13.85
13770	13770	13770	13770	13770
100	100	100	100	100

SUBJECT SITE

1 inch = approximately 75 feet

**CRAPO**  
RES. C

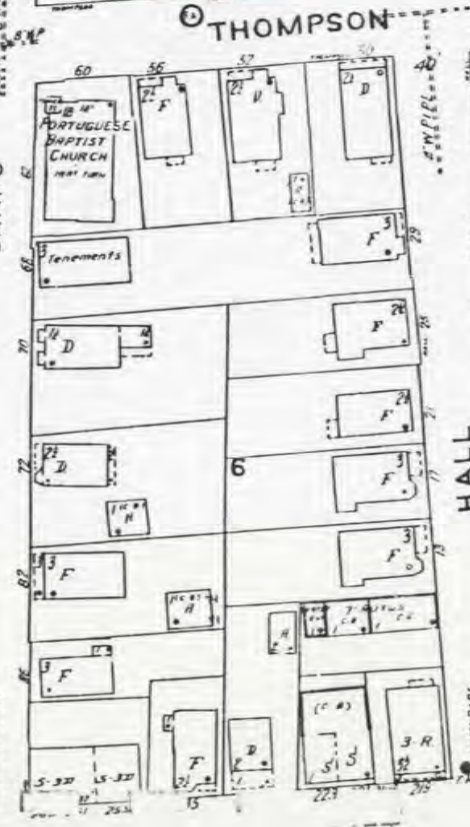
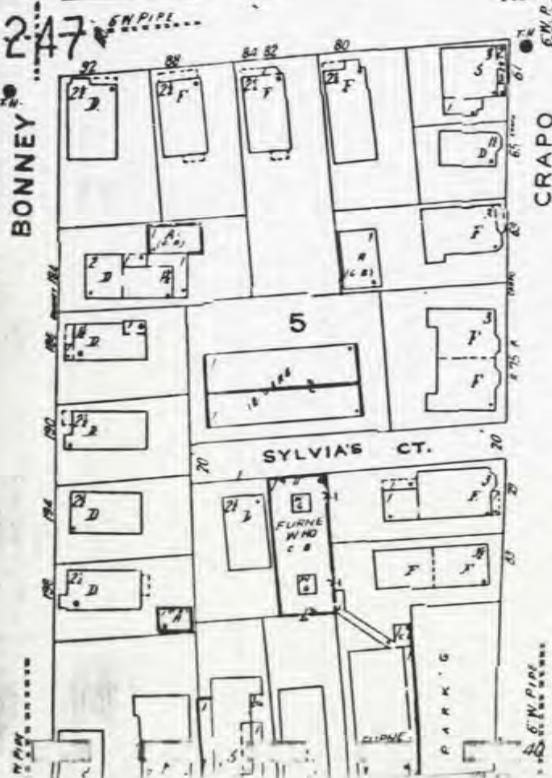
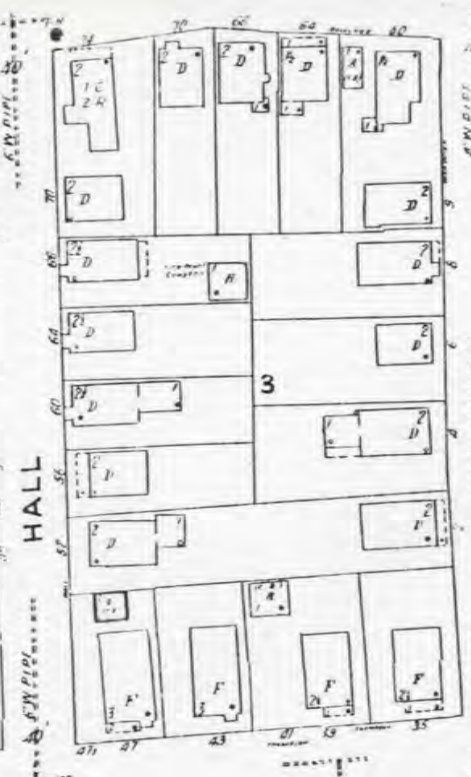
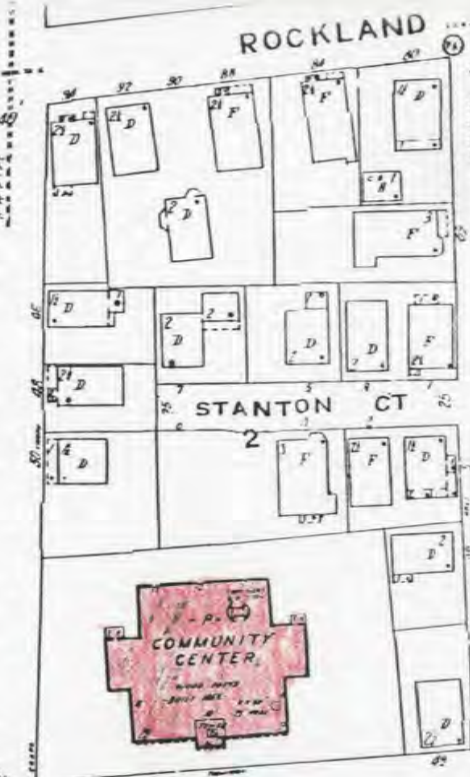
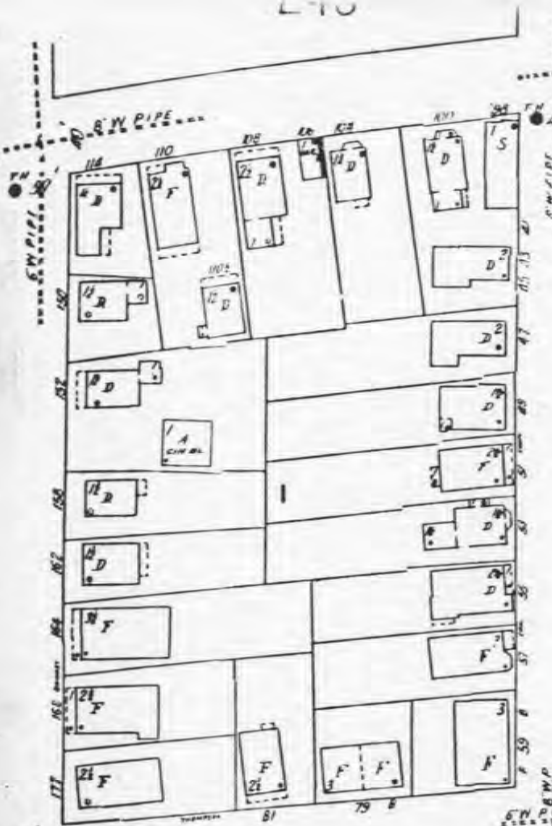
202	199	197	275	276	277	281
18.33	22.13	22.27	15.31	13.22	13.22	13.22
4390	6025	6063	1168	3600	3600	3600
202	199	197	275	276	277	281
18.33	22.13	22.27	15.31	13.22	13.22	13.22
4390	6025	6063	1168	3600	3600	3600

**STREET**

218	216	214	208	209	210	211
11.75	11.75	11.75	11.75	11.75	11.75	11.75
3200	3200	3200	3200	3200	3200	3200
218	216	214	208	209	210	211
11.75	11.75	11.75	11.75	11.75	11.75	11.75
3200	3200	3200	3200	3200	3200	3200

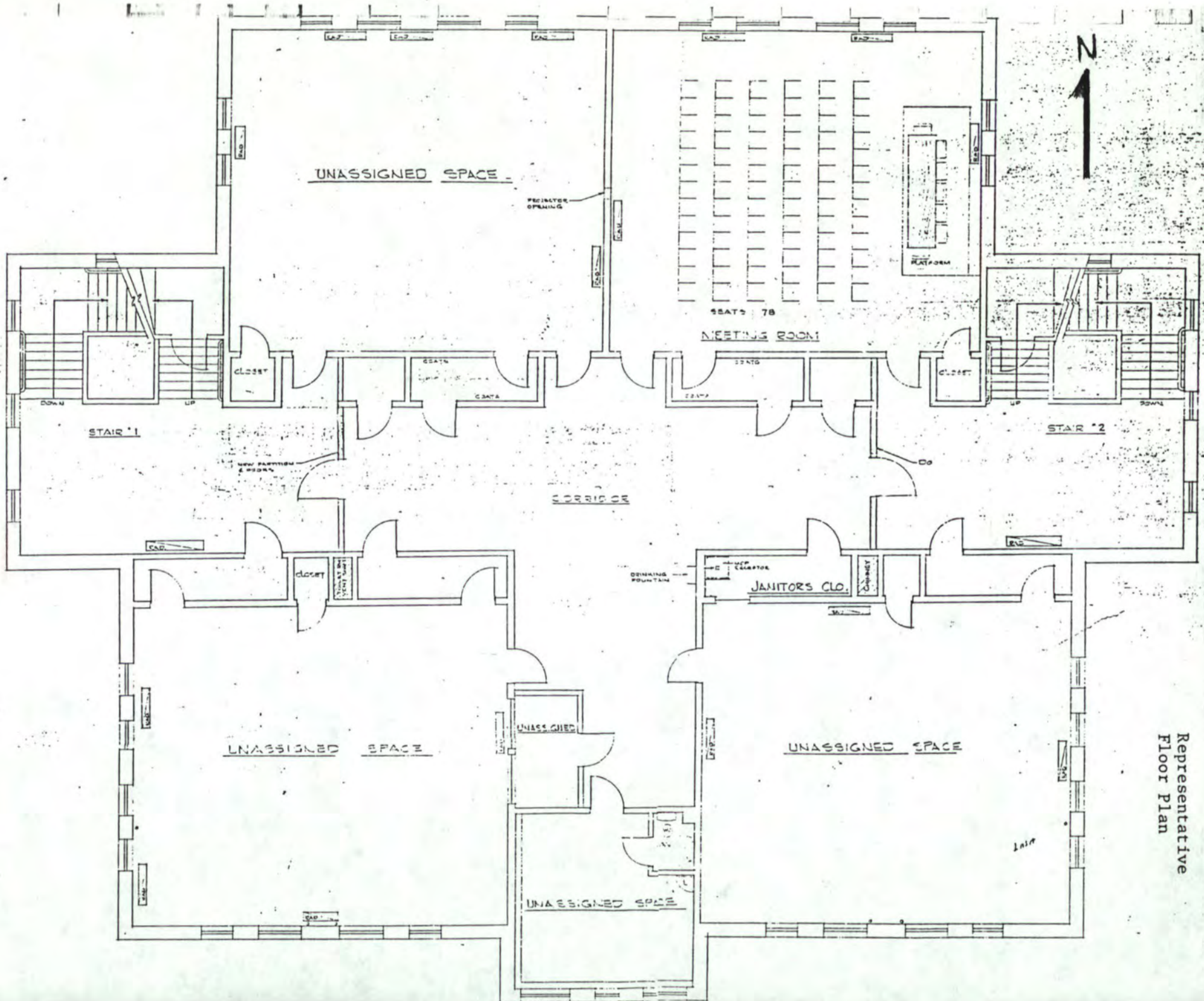
**STREET**

247  
BONNEY



SUBJECT BUILDING  
NO Scale





Representative  
Floor Plan

UNITED STATES DEPARTMENT OF THE INTERIOR  
NATIONAL PARK SERVICE

NATIONAL REGISTER OF HISTORIC PLACES  
EVALUATION/RETURN SHEET

REQUESTED ACTION: NOMINATION

PROPERTY Thompson Street School  
NAME:

MULTIPLE  
NAME:

STATE & COUNTY: MASSACHUSETTS, Bristol

DATE RECEIVED: 12/26/89      DATE OF PENDING LIST: 1/09/90  
DATE OF 16TH DAY: 1/25/90      DATE OF 45TH DAY: 2/09/90  
DATE OF WEEKLY LIST:

REFERENCE NUMBER: 89002329

NOMINATOR: STATE

REASONS FOR REVIEW:

APPEAL: N DATA PROBLEM: N LANDSCAPE: N LESS THAN 50 YEARS: N  
OTHER: N PDIL: N PERIOD: N PROGRAM UNAPPROVED: N  
REQUEST: N SAMPLE: N SLR DRAFT: N NATIONAL: N

COMMENT WAIVER: N

ACCEPT     RETURN     REJECT    1/26/90 DATE

Entered in the  
National Register

ABSTRACT/SUMMARY COMMENTS:

RECOM./CRITERIA \_\_\_\_\_  
REVIEWER \_\_\_\_\_  
DISCIPLINE \_\_\_\_\_  
DATE \_\_\_\_\_

DOCUMENTATION see attached comments Y/N see attached SLR Y/N

---

CLASSIFICATION

count       resource type

---

STATE/FEDERAL AGENCY CERTIFICATION

---

FUNCTION

historic       current

---

DESCRIPTION

architectural classification  
 materials  
 descriptive text

---

SIGNIFICANCE

Period      Areas of Significance--Check and justify below

Specific dates      Builder/Architect  
Statement of Significance (in one paragraph)

summary paragraph  
 completeness  
 clarity  
 applicable criteria  
 justification of areas checked  
 relating significance to the resource  
 context  
 relationship of integrity to significance  
 justification of exception  
 other

---

BIBLIOGRAPHY

---

GEOGRAPHICAL DATA

acreage       verbal boundary description  
 UTM's       boundary justification

---

ACCOMPANYING DOCUMENTATION/PRESENTATION

sketch maps       USGS maps       photographs       presentation

---

OTHER COMMENTS

Questions concerning this nomination may be directed to

\_\_\_\_\_ Phone \_\_\_\_\_

Signed \_\_\_\_\_ Date \_\_\_\_\_



Thompson Street School

58 Crapo Street

New Bedford in # Bustard C

William A Swan

July 1988

Office of Housing & Neighborhood Development

Front facade looking north

South facade

PHOTO 1 of 2



Thompson Street School

58 Capo Street

New Bedford MA

Prystal Co

William A. Swan

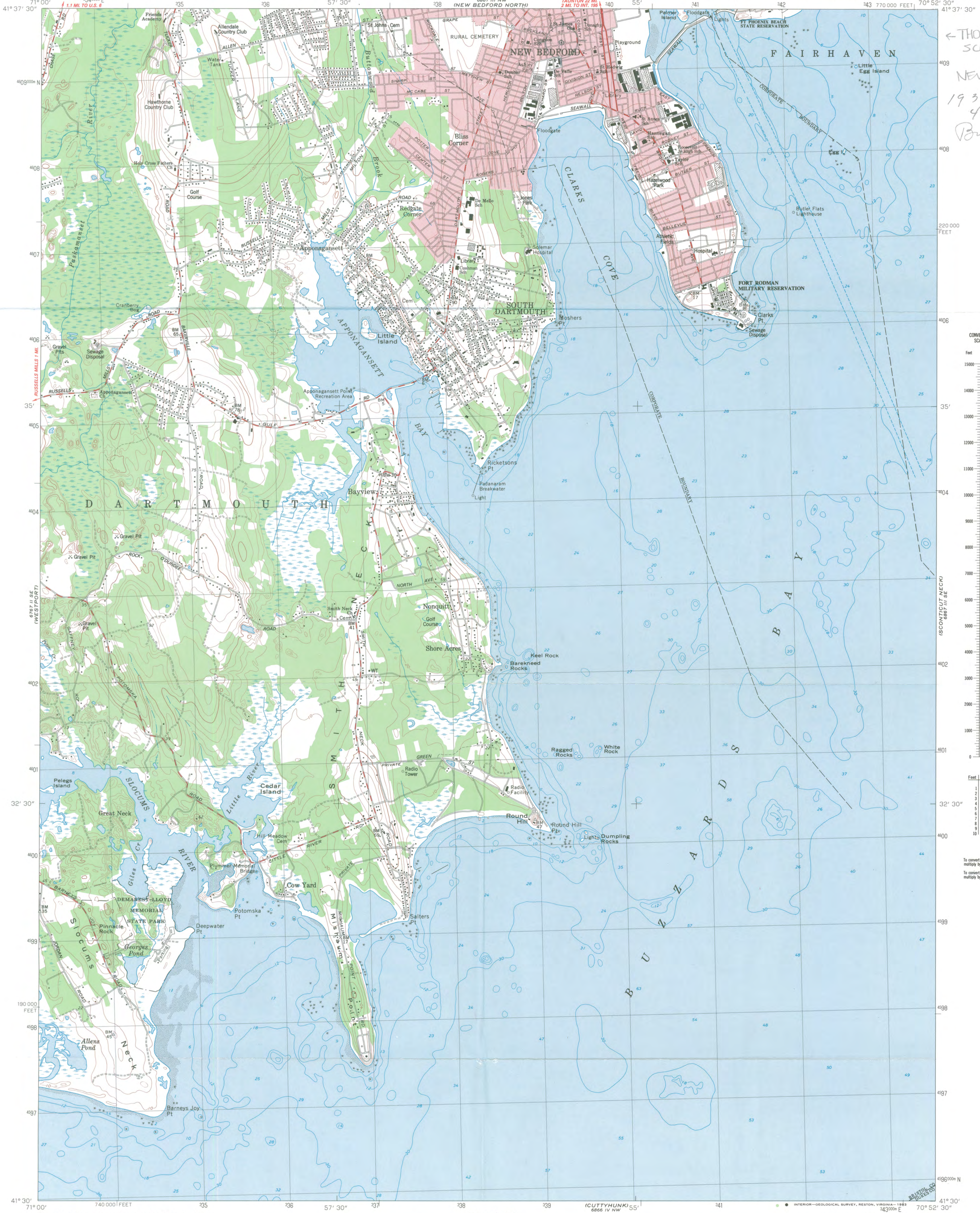
July 1988

Office of Housing & Neighborhood Development

Front and east side looking northwest.

South and East Elevations

PHOTO 2 of 2



THOMPSON ST.  
SCHOOL,  
NEW BEDFORD, MA  
193394ST  
460933U  
Bunker Co

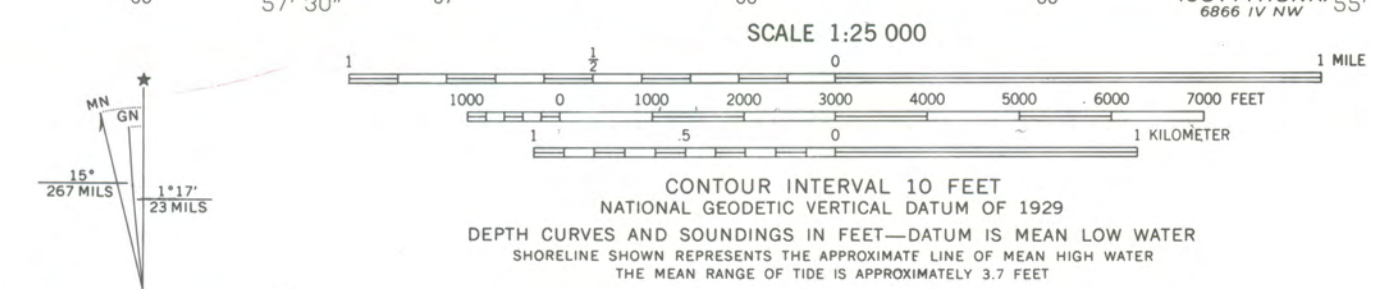
CONVERSION  
SCALES



Feet	Meters
1	3048
2	6096
3	9144
4	12192
5	15240
6	18288
7	21286
8	24284
9	27282
10	30280

To convert feet to meters  
multiply by .3048  
To convert meters to feet  
multiply by 3.2808

Mapped, edited, and published by the Geological Survey  
Control by USGS, NOS/NOAA, and Massachusetts Geodetic Survey  
Topography by plane-table surveys 1936. Revised from aerial  
photographs taken 1974. Field checked 1975  
Selected hydrographic data compiled from NOS 237 (1973),  
249 (1974), and 252 (1973). This information is not intended for  
navigational purposes  
Polyconic projection, 1927 North American datum  
10,000-foot grid ticks based on Massachusetts coordinate system,  
mainland zone  
1000-meter Universal Transverse Mercator grid,  
zone 19  
Red tint indicates area in which only landmark buildings are shown  
Boundaries in tidewater areas from information furnished by  
Massachusetts Department of Public Works  
Map photoinspected 1977  
No major culture or drainage changes observed



ROAD CLASSIFICATION  
Primary highway, hard surface  
Secondary highway, hard surface  
Light-duty road, hard or improved surface  
Unimproved road  
Interstate Route  
U. S. Route  
State Route

NEW BEDFORD SOUTH, MASS.  
N4130-W7052.5/7.5  
PHOTOINSPECTED 1977  
AMS 6867 III SW—SERIES V814

FOR SALE BY U. S. GEOLOGICAL SURVEY, RESTON, VIRGINIA 22092  
A FOLDER DESCRIBING TOPOGRAPHIC MAPS AND SYMBOLS IS AVAILABLE ON REQUEST



December 13, 1989

Carol Shull  
 National Register of Historic Places  
 Department of the Interior  
 National Park Service  
 P.O. Box 37127  
 Washington, DC 20013-7127

Dear Ms. Shull:

Enclosed please find the following nomination:

Thompson Street School, 58 Crapo Street, New Bedford (Bristol County),  
 Massachusetts, 02745.

There has been no owner objections for the above mentioned property.

The nomination has been voted eligible by the State Review Board and has been signed by the State Historic Preservation Officer. Owners were notified of pending State Review Board consideration 30-75 days before the meeting and were afforded the opportunity to comment. Comments received to date are attached to the nomination form.

Sincerely,

Anne E. Tait  
 Acting National Register Director  
 Massachusetts Historical Commission

Enclosure: