



Mead Johnson River-Rail-Truck  
Terminal and Warehouse  
1830 West Ohio Street  
Evansville, Indiana

A. B. Casteel; DMD; 3/84

Photo #1: View, looking northwest,  
of the terminal and warehouse in  
its riverbank context.



Mead Johnson River-Rail-Truck  
Terminal and Warehouse  
1830 West Ohio Street  
Evansville, Indiana

A. B. Casteel; DMD; 3/84

Photo#2: Close-up view, looking  
northwest, of the terminal and  
warehouse structures.



MEAD JOHNSON TERMINAL

RIVER RAIL TRUCK TERMINAL  
WAREHOUSE

Mead Johnson River-Rail-Truck  
Terminal and Warehouse  
1830 West Ohio Street  
Evansville, Indiana

A. B. Casteel; DMD; 3/84

Photo #3: View, looking west, of  
the terminal and warehouse  
structures.

MEAD JOHNSON TERMINAL

RIVER · RAIL · TRUCK TERMINAL  
WAREHOUSE



UNION  
LOCAL  
1000



Mead Johnson River-Rail-Truck  
Terminal and Warehouse  
1830 West Ohio Street  
Evansville, Indiana

A. B. Casteel: DMD; 3/84

Photo #4: View, looking west, of the  
east elevation of the warehouse.





Mead Johnson River-Rail-Truck  
Terminal and Warehouse  
1830 West Ohio Street  
Evansville, Indiana

A. B. Casteel; DMD; 3/84

Photo #5: View of the south  
elevation of the warehouse.



Mead Johnson River-Rail-Truck  
Terminal and Warehouse  
1830 West Ohio Street  
Evansville, Indiana

A. B. Casteel; DMD; 3/84

Photo #6: View of the west elevation  
of the terminal canopy over the  
riverbank and river.



Mead Johnson River-Rail-Truck  
Terminal and Warehouse  
1830 West Ohio Street  
Evansville, Indiana

A. B. Casteel; DMD; 3/84

Photo #7: View of the west elevation  
of the terminal canopy at the end  
adjacent to the warehouse.



Mead Johnson River-Rail-Truck  
Terminal and Warehouse  
1830 West Ohio Street  
Evansville, Indiana

A. B. Casteel; DMD; 3/84

Photo #8: View of the south elevation of the 1957 warehouse addition. Note: the original warehouse structure stopped at point where the canopy structure abuts the warehouse structure. The roof line is lower.





Mead Johnson River-Rail-Truck  
Terminal and Warehouse  
1830 West Ohio Street  
Evansville, Indiana

A. B. Casteel; DMD; 3/84

Photo #9: View of the west elevation  
of the warehouse structure.



Mead Johnson River-Rail-Truck  
Terminal and Warehouse  
1830 West Ohio Street  
Evansville, Indiana

A. B. Casteel; DMD; 3/84

Photo #10: View of the north elevation  
of the warehouse. 1957 addition in the  
forground.



Mead Johnson River-Rail Truck  
Terminal and Warehouse  
1830 West Ohio Street  
Evansville, Indiana

A. B. Casteel; DMD; 3/84

Photo #11: View of the north elevation  
of the warehouse. The original structure  
in the foreground.



Mead Johnson River-Rail-Truck  
Terminal and Warehouse  
1830 West Ohio Street  
Evansville, Indiana

A. B. Gasteel; DMD; 3/84

Photo #12: View of the canopy interior  
looking south towards the river.





Mead Johnson River-Rail-Truck  
Terminal and Warehouse  
1830 West Ohio Street  
Evansville, Indiana

A. B. Casteel; DMD; 3/84

Photo #13: View of the canopy interior  
looking north at the warehouse structure.



Mead Johnson River-Rail-Truck  
Terminal and Warehouse  
1830 West Ohio Street  
Evansville, Indiana

A. B. Casteel; DMD; 3/84

Photo #14: Close-up view of one of the  
electric overhead gantry cranes.



**Mead Johnson River-Rail-Truck  
Terminal and Warehouse  
1830 West Ohio Street  
Evansville, Indiana**

**A. B. Casteel; DMD; 3/84**

**Photo #15: Close-up view of the  
bisecting railroad tracks under  
the canopy structure.**

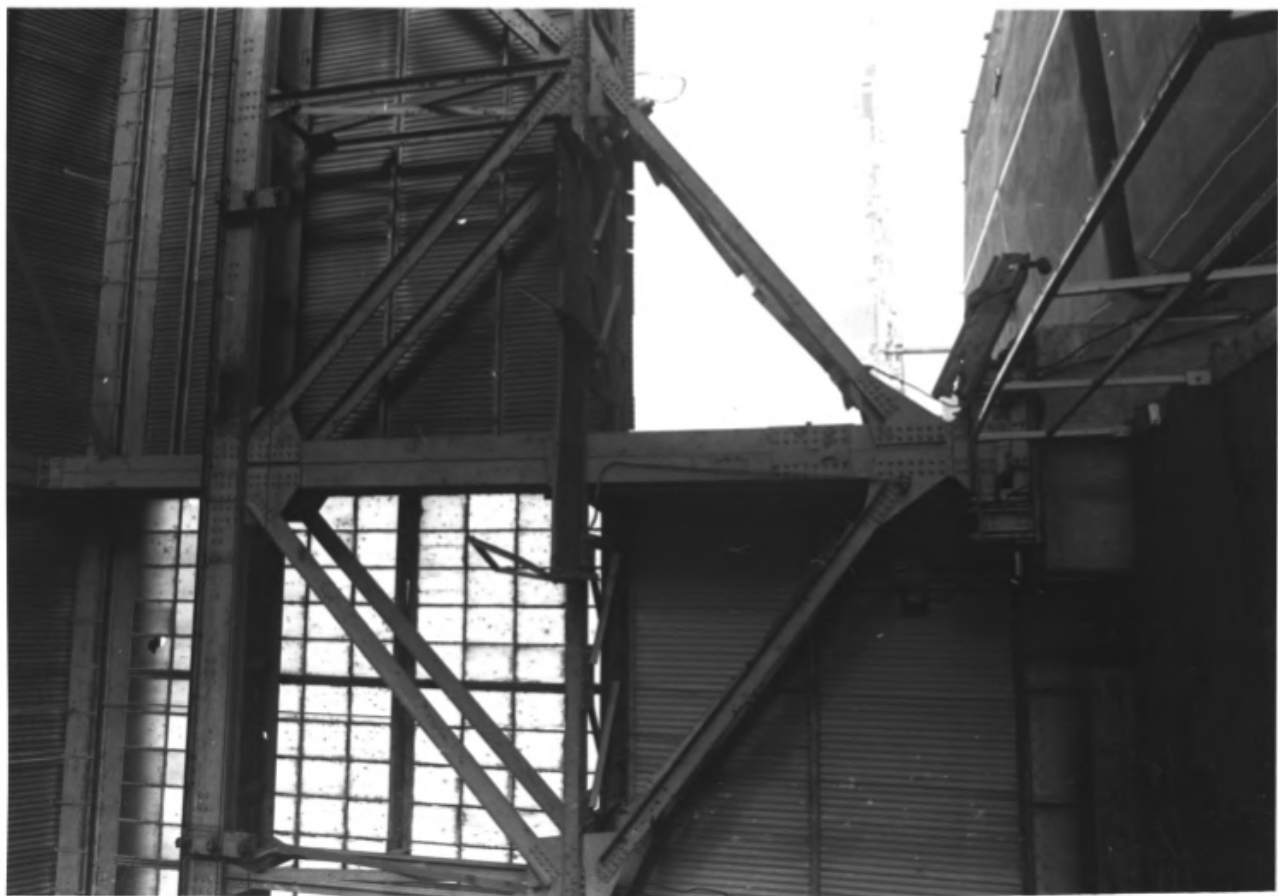


Mead Johnson River-Rail-Truck  
Terminal and Warehouse  
1830 West Ohio Street  
Evansville, Indiana

A. B. Casteel; DMD; 3/84

Photo #16: Detail of a part of  
the superstructure of the canopy/  
terminal building.





Mead Johnson River-Rail-Truck  
Terminal and Warehouse  
1830 West Ohio Street  
Evansville, Indiana

A. B. Casteel; DMD; 3/84

Photo #17: Detail of a part of the  
superstructure of the canopy/  
terminal building.



Mead Johnson River--Rail--Truck  
Terminal and Warehouse  
1830 West Ohio Street  
Evansville, Indiana

A. B. Casteel; DMD; 3/84

Photo #18: Detail of the oak flooring  
in the canopy/terminal structure.



Mead Johnson River-Rail-Truck  
Terminal and Warehouse  
1830 West Ohio Street  
Evansville, Indiana

A. B. Casteel; DMD; 3/84

Photo #19: Close-up view of the concrete loading/unloading dock used for trucks and to handle items into the warehouse.



Mead Johnson River-Rail-Truck

Terminal and Warehouse

1830 West Ohio Street

Evansville, Indiana

A. B. Casteel; DMD; 3/84

Photo #20: Close-up view of the covered concrete docks used for rail transfer in warehouse operations. This is on the north elevation of the original warehouse.





Mead Johnson River-Rail-Truck  
Terminal and Warehouse  
1830 West Ohio Street  
Evansville, Indiana

A. B. Casteel; DMD; 3/84

Photo #21: Detail of some of the  
reinforced concrete piers which  
support the canopy structure.