



WHALEERS CABIN, Pt. Lobos State Reserve, 4 miles south of Carmel, Hwy 1
SR-1, BOX 62, CARMEL, CA. 93923
MONTEREY COUNTY, 053, CALIFORNIA

1/5<No. 17A>047 © BND
0 N N N+2-10 AC+01 ACs-03 ACh+01 GR08 MoF Z084-S/084-0

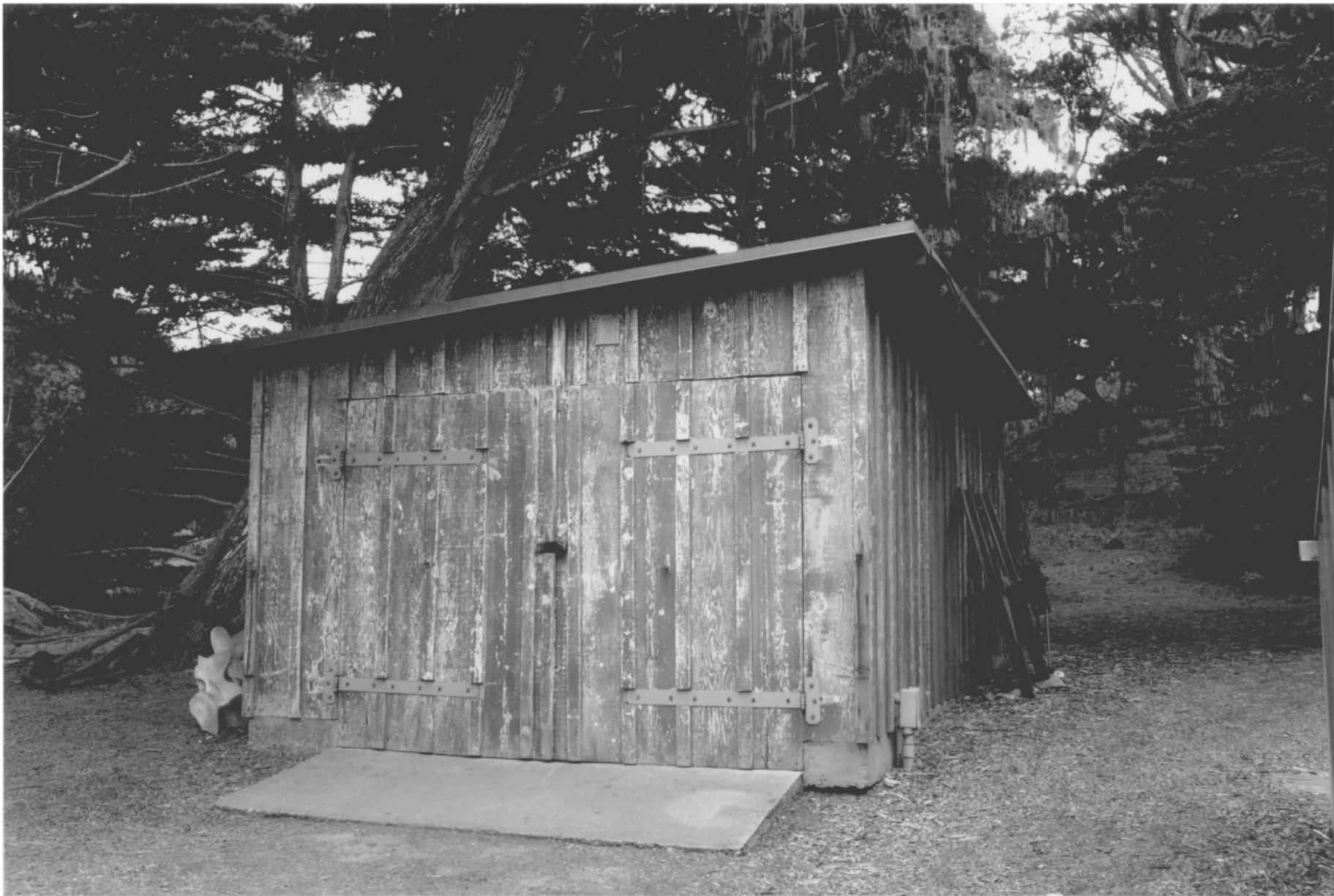


WHALERS CABIN, Pt. Lobos State Reserve, 4 miles south of Carmel, Hwy 1

SR-1, BOX 62, CARMEL, CA 93923

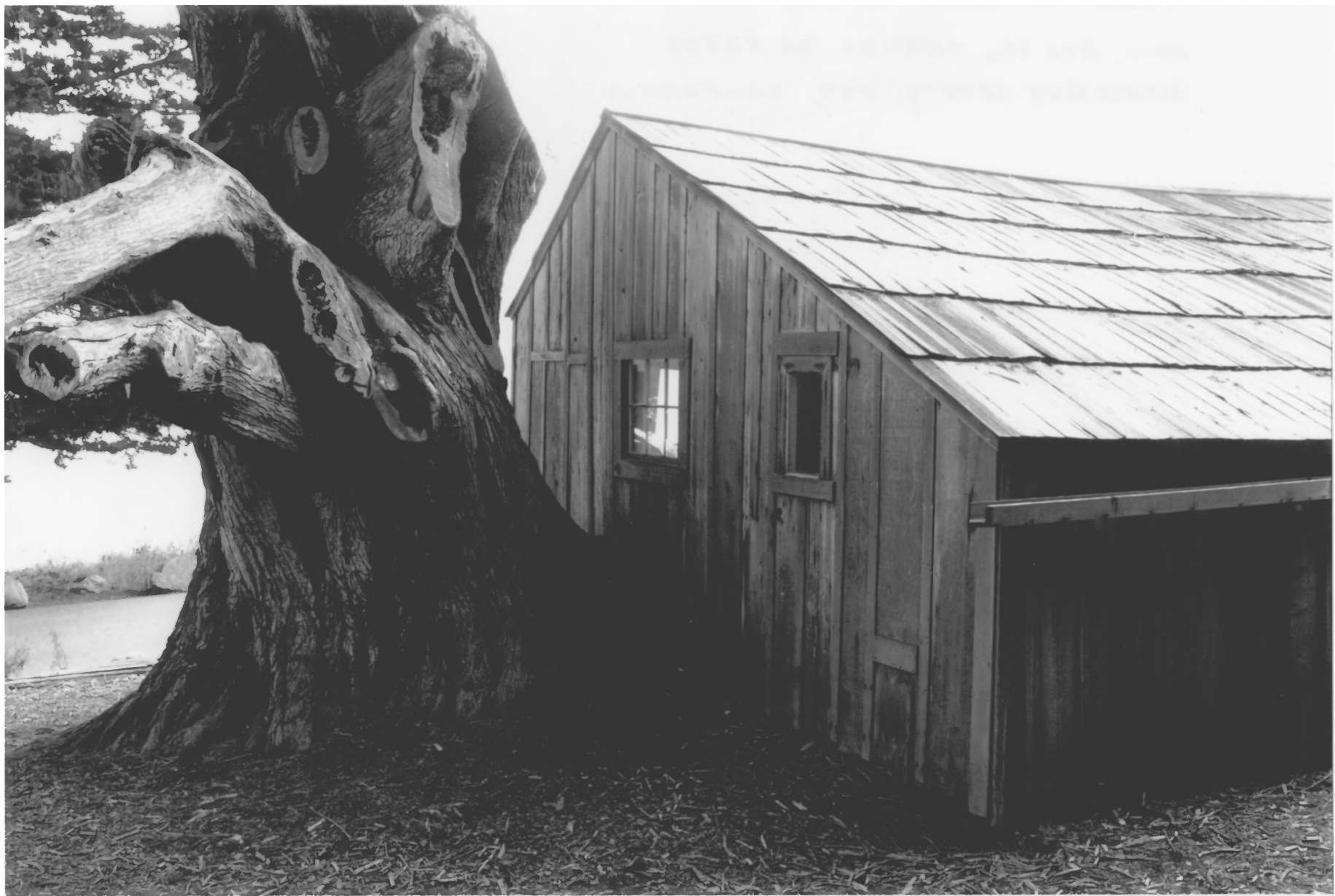
MONTEREY COUNTY, 053, CALIFORNIA

11/5<No. 29A>038 @ BNO
49 N N N+2-43 AC+01 ACe-03 ACh+01 GR08 MoF 2004.9/004.1



WHALEERS CABIN, Pt. Lobos State Reserve, 4 miles south of Carmel, Hwy 1
SR-1, BOX 62, CARMEL, CA 93923
MONTEREY COUNTY, 053, CALIFORNIA

11/5<No. 4A>005 @ BND
49 N N-1+4-25 AC+01 ACs-03 ACh+01 GR08 HdF 2004.0/004.0



WHALERS CABIN

Pt. Lobos State Reserve, 4 miles south of Carmel, Hwy 1

SR-1, Box 62, CARMEL, CA 93923

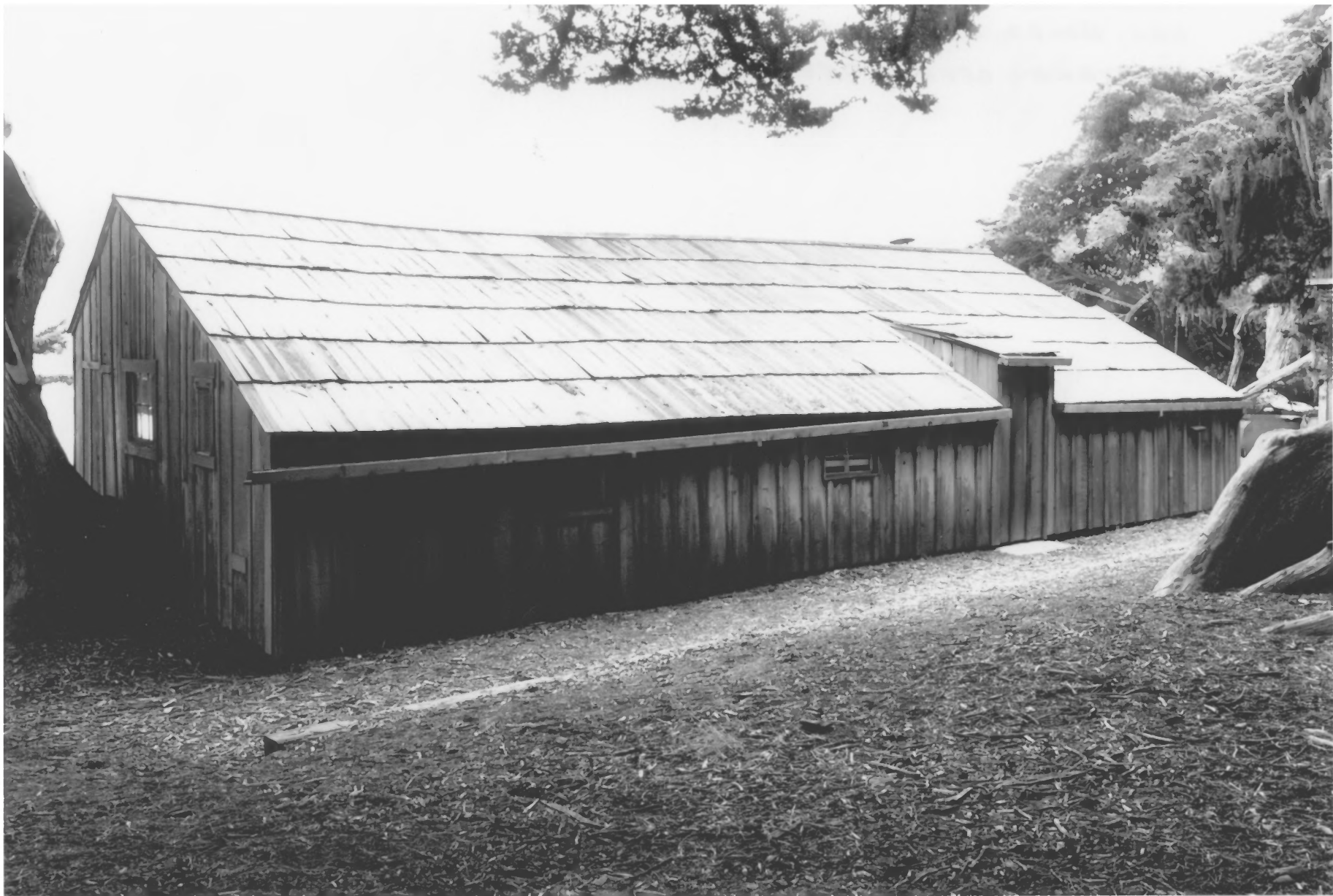
MONTEREY COUNTY, 053, CALIFORNIA

11/5<No. 14A>043 @ BND
049 N N N-3-10 AC+01 ACs-03 ACH+01 GR08 MoF 2084.8/084.0



WHALERS CABIN Pt. Lobos State Reserve, 4 miles south of Carmel, Hwy 1
SR-1, BOX 62, CARMEL, CA. 93923
MONTEREY COUNTY, 053, CALIFORNIA

5<No - 6A>000 @ BND
N N-1+1 14 AC+01 ACs-03 ACh+01 GR08 MoF 2084.8/084.0



WHALEERS CABIN

Pt. Lobos State Reserve, 4 miles South of Carmel, Hwy 1

SR-1, BOX 62, CARMEL, CA. 93923

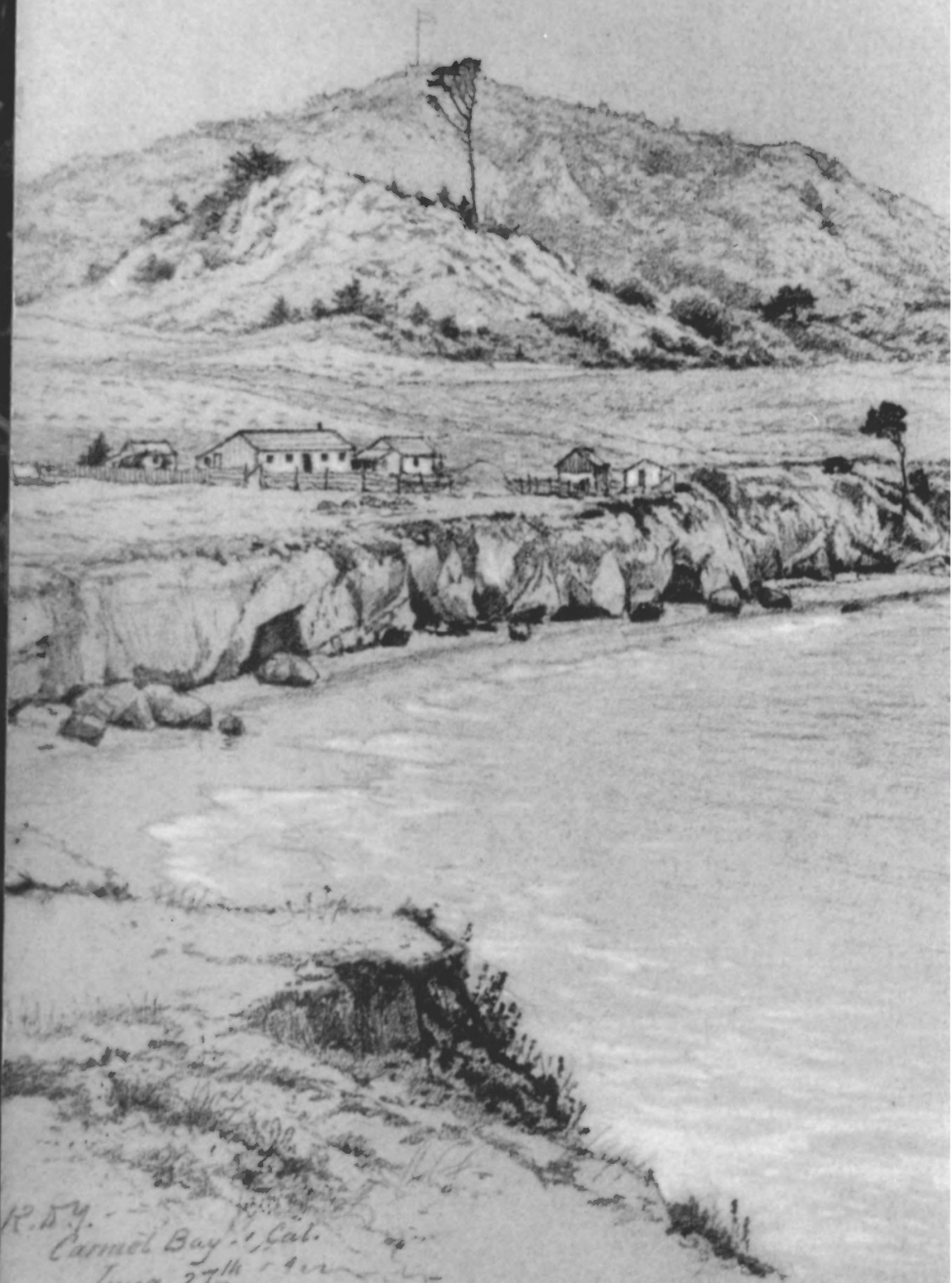
MONTEREY COUNTY, 053, CALIFORNIA

11/5<NO. 11AY016 @ BND
349 N N N-1-57 AC+01 ACS-03 ACH+01 GR08 MoF 2004.8/004.0



WHALERS CABIN, Pt. Lobos State Reserve 4 miles south of Carmel, Hwy 1
SR-1, BOX 62, CARMEL, CA. 93923
MONTEREY, COUNTY, 053, CALIFORNIA

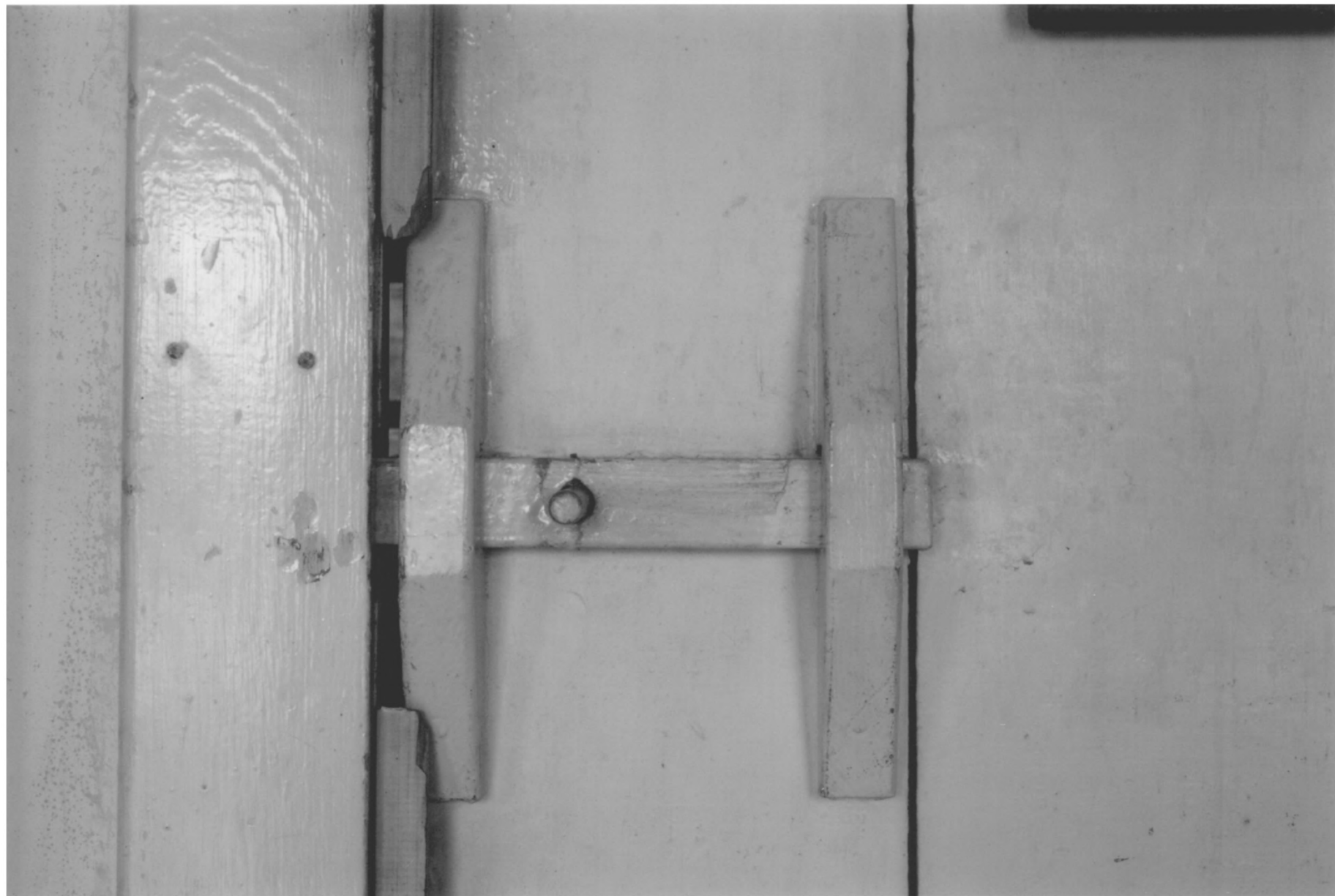
11/5<No. 23A>054 @ BND
49 N N N-2-32 AC+01 AC=-03 ACH+01 GR08 MoF 2084.8/084.0



R.D.Y. -
Carmel Bay, Cal.
June 27th - 1879
- 1879 -

WHALERS CABIN, Pt. Lobos State Reserve, 4 miles South of Carmel, Hwy 1
SR-1, BOX 62, CARMEL, CA 93923
MONTEREY COUNTY, 053, CALIFORNIA

11/5<VND-049>061@END
049 N N N-1-32 AC+01 ACS-03 ACH+01 GROS MOF 2064.8/064.0



WHALEERS CABIN, Pt. Lobos State Reserve, 4 miles south of Carmel, Hwy 1

SR-1, BOX 62, CARMEL, CA. 93923

MONTEREY COUNTY, 053, CALIFORNIA

1/5<No. 20A>050 © BND
9 N N N-2-37 AC+01 AC=-03 ACH+01 GR08 MqF 2084.9/084.1