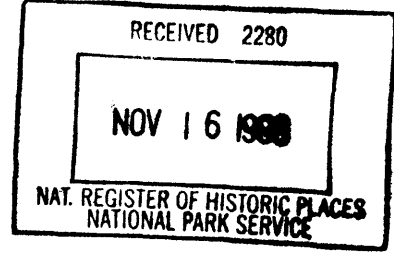


United States Department of the Interior
National Park Service

National Register of Historic Places
Registration Form



1. Name of Property

historic name: **Strathmore Place Historic District**

other name/site number: N/A

2. Location

street & number: Strathmore Circle East, Strathmore Circle North, NA not for publication
Strathmore Circle South, and 280 and 292 East Parkway

city or town: Memphis N/A vicinity

state Tennessee code TN county Shelby code 157 zip code 38112

3. State/Federal Agency Certification

As the designated authority under the National Historic Preservation Act of 1986, as amended, I hereby certify that this nomination request for determination of eligibility meets the documentation standards for registering properties in the National Register of Historic Places and meets the procedural and professional requirements set forth in 36 CFR Part 60. In my opinion, the property meets does not meet the National Register Criteria. I recommend that this property be considered significant nationally statewide locally. (See continuation sheet for additional comments.)

Herbert L. Hayden 11/10/98
Signature of certifying official (Deputy SHPO, Tenn. Historical Commission) Date

State or Federal agency and bureau

In my opinion, the property meets does not meet the National Register criteria. (See continuation sheet for additional comments.)

Signature of commenting or other official Date

State or Federal agency and bureau

4. National Park Service Certification

I, hereby certify that this property is:

- entered in the National Register See continuation sheet.
- determined eligible for the National Register See continuation sheet.
- determined not eligible for the National Register
- removed from the National Register
- other (explain): _____

Copy
Edson H. Beall 12-17-98
Signature of the Keeper Date of Action

Strathmore Place Historic District
Name of Property

Memphis, Shelby Co., TN
County and State

5. Classification

Ownership of Property: private

Number of Resources within Property:

(Do not include previously listed resources in the count)

Category of Property: district

Contributing	Noncontributing	
35	12	buildings
0	0	sites
0	0	structures
0	0	objects
35	12	Total

Name of related multiple property listing:

Number of contributing resources previously listed in the National Register: N/A

Historic Residential Resources of Memphis, Shelby County, Tennessee

6. Function or Use

Historic Functions: DOMESTIC Sub: single dwelling
DOMESTIC secondary structure

Current Functions: DOMESTIC Sub: single dwelling
DOMESTIC secondary structure

7. Description

Architectural Classification:

Colonial Revival
Craftsman
Tudor Revival
Mediterranean Revival

Other Description: N/A

Materials

foundation BRICK
roof ASPHALT SHINGLES
walls BRICK
other STONE/limestone

Narrative Description

See continuation sheets.

8. Statement of Significance

Applicable National Register Criteria

- A** Property is associated with events that have made a significant contribution to the broad patterns of our history.
- B** Property is associated with the lives of persons significant in our past.
- C** Property embodies the distinctive characteristics of a type, period, or method of construction or represents the work of a master, or possesses high artistic values, or represents a significant and distinguishable entity whose components lack individual distinction.
- D** Property has yielded, or is likely to yield, information important in prehistory or history.

Criteria Considerations N/A

Property is:

- A** owned by a religious institution or used for religious purposes
- B** removed from its original location.
- C** a birthplace or grave
- D** a cemetery
- E** a reconstructed building, object, or structure
- F** a commemorative property
- G** less than 50 years of age or achieved significance within the past 50 years.

Narrative Statement of Significance

See continuation sheets.

Areas of Significance

ARCHITECTURE
COMMUNITY PLANNING & DEVELOPMENT

Period of Significance

Ca. 1917 to ca. 1945

Significant Dates

Ca. 1917

Significant Persons

N/A

Cultural Affiliation

N/A

Architect/Builder

Unknown

9. MAJOR BIBLIOGRAPHICAL REFERENCES

Bibliography

See continuation sheet.

Previous Documentation on File (NPS): N/A

- preliminary determination of individual listing (36 CFR 67) has been requested.
- previously listed in the National Register
- previously determined eligible by the National Register
- designated a National Historic Landmark
- recorded by Historic American Buildings Survey

- recorded by Historic American Engineering Record

Primary Location of Additional Data:

- State Historic Preservation Office
- Other State agency
- Federal agency
- Local government
- University
- Other
- Name of repository:

Tennessee Historical Commission

Strathmore Place Historic District
Name of Property

Memphis, Shelby Co., TN
County and State

10. Geographical Data

Acreage of Property: approximately 10.4 acres

USGS Quad Map Name: Northeast Memphis 409 NW

UTM References:	Zone	Easting	Northing	Zone	Easting	Northing
	1 16	228500	3891960	3 16	228280	3891720
	2 16	228480	3891700	4 16	228320	3891980

___ See continuation sheet.

Verbal Boundary Description: See continuation sheet.

Boundary Justification: See continuation sheet.

11. Form Prepared By

name/title: John Linn Hopkins & Marsha R. Oates
organization: Hopkins & Associates date: June, 1998
street & number: 974 Philadelphia Street telephone: (901) 278-5186
city or town: Memphis state: TN zip code: 38104

Property Owner

name: See attached list.
street & number: telephone:
city or town: state: zip code:

United States Department of the Interior
National Park Service

National Register of Historic Places Continuation Sheet

Strathmore Place Historic District
Memphis, Shelby County, TN

Section number 7 Page 1

NARRATIVE DESCRIPTION

The Strathmore Place Historic District comprises a small enclave of twenty-six principal residences built between ca. 1920 and ca. 1965, located in the Midtown area of Memphis, Shelby County, Tennessee, adjacent to East Parkway (Memphis Park and Parkway System, NR 7/03/1989) and opposite the eastern end of Overton Park (NR 10/25/1989). Of the principal properties which make up the district, twenty-two contribute to the significance of the district, while only four do not.

Created as the Strathmore Place Subdivision in 1917, the original rectangular, twelve-acre lot was laid out around a flattened U-shaped drive connecting only with East Parkway. Dedications of rights of way for a side street on the southern edge of the subdivision removed approximately 1.6 acres from its total developable land, leaving just over ten acres for the construction of houses. The division of the land resulted in an irregular pattern of lot sizes, shapes, and street frontages that creates a picturesque streetscape, which is enhanced by the relatively narrow 50' width of the street itself.

Lot frontages range from a maximum of 177 feet for lots in the internal corners, to a minimum of 45' for lots facing the exterior curved corners of the street. Lot depths range from a minimum of 153' to a maximum of 270 feet on adjoining lots in the radius of the street curve. The subdivision plan also resulted in building setbacks from the street that range from a minimum of 30 feet to a maximum of 50 feet.

The setting of the district is characterized by mature street and yard trees in varieties of oak, maple, sycamore, red gum, and magnolia. Ornamental trees and shrubs include crape myrtle, tulip poplar, and dogwood, among others. Other elements of the streetscape include concrete sidewalks set behind a narrow grass strip.

The district has a wide range of architectural styles and house types. Architectural styles represented in the district include Colonial Revival, Dutch Colonial Revival, Craftsman, Mission Revival, Tudor Revival, Mediterranean Revival and Spanish Revival. Some of the building types represented include the bungalow, the four square, the double-pile cottage, and many variations of these and other forms. Many of the residences in the district may be the work of notable local architects, though the identity of most of these architects is not known.

An inventory of the properties in the district follows. Buildings constructed during the period of the district's significance which retain their architectural integrity are considered to contribute to its historical character and are labeled (C). Buildings which were constructed after the period of the district's significance, or buildings which have lost their original architectural character due to alterations or additions, do not contribute to the character of the district and are labeled (NC).

United States Department of the Interior
National Park Service

National Register of Historic Places
Continuation Sheet

Strathmore Place Historic District
Memphis, Shelby County, TN

Section number 7 Page 2

INVENTORY OF PROPERTIES

East Parkway

01 280 East Parkway (C) Two-story, three-bay, load-bearing masonry with stucco veneer four square with Craftsman influence, built ca. 1921-25. Complex hip roof with eyebrow vents, boxed cornice with cornice brackets and deep eaves, covered with flat tile roofing. Windows contain 9/1 double-hung sashes in pairs and groups of three. Partial-width, partially-undercut porch with angular, front-projecting porte cochère covered with flat and pent roofs supported by stuccoed piers. Entrance contains a multi-light door with multi-light transom and sidelights; a side entrance contains a multi-light double-door.

02 292 East Parkway (C) Two-story, six-bay, stucco-veneered house with Mediterranean and Spanish Revival influences, built ca. 1925-30. Complex gable roof with flush eaves, covered in flat tiles. Windows are 9/1 and 4/1 double-hung sashes, and arched 5/1 double-hung fan lights, some topped with an entablature of C-scroll motifs. Side, one-bay, side gable sun porch enclosed with eight-light single and double-doors in groups of four, flanked by rope-turned columns with Corinthian capitals; and, arched, flat-roof behind parapet rear porte cochère supported by piers. Entrance has a surround with a blind arch with C-scroll and urn-in-medallion relief above and eight-light double-door topped with a four-light transom.

Garage, ca. 1925-30. One-story, two-bay, frame, gable and hip roof, asphalt shingles, replacement plywood siding, replacement doors. (NC)

Strathmore Circle, East

03 276 Strathmore Circle, East (NC) One and one-half story, three-bay, brick-veneered bungalow with Craftsman influence, built ca. 1921-22 and altered with Colonial Revival influence ca. 1960-65. Complex hip roof with gabled monitor, exposed rafter tails and added box cornice, covered with asphalt shingles. Windows are 1/1 metal-frame replacement lights; a five-unit bay widow added ca. 1960-65 with five 4/1 fixed sash lights. Partial-width, flat roofed porch altered ca. 1960-65 supported by paired box columns on raised brick bases; side hip-roofed porte-cochère supported by brick piers. Entrance contains a multi-panel replacement door; transom enclosed.

Garage, ca. 1921-22, altered ca. 1960-65. One-story, two-bay, frame, hip roof, exterior plywood paneling, replacement bay door. (NC)

04 281 Strathmore Circle, East (C) One and one-half story, six-bay, stucco and brick veneered bungalow with Craftsman and Tudor influences, built ca. 1925-30. Complex hip, gable and shed roofs, some behind parapet walls, with gable-front monitor, and exposed rafter tails, covered with asphalt shingles. Windows are Craftsman multi-light/1 double-hung sashes, some in groups of three. Front facade features a projecting battered chimney. Symmetrical side-gable, one-bay porch supported by brick piers with full-length Mission-style 6-light casements. Entrance set within a gable-front battered wall projecting vestibule with a peaked surround containing a peaked single-light, two-panel door.

Garage/quarters, ca. 1925-30. One-story, two-bay, stucco veneer, gable and hip roof, asphalt shingles, 6/1 double-hung sashes. (C)

05 282 Strathmore Circle, East (C) One-story, four-bay, brick-veneered bungalow with Craftsman influence, built ca. 1925-30. Complex gable roof with jerkinheads and plain projecting eaves, covered with asphalt shingles. Windows are Craftsman multi-light/1 double-hung sashes, some in groups of three. One-bay, gable-front porch supported by box columns; and, side, one-bay, gable-front porch supported by box columns. Entrance contains a single-panel replacement door.

United States Department of the Interior
National Park Service

National Register of Historic Places
Continuation Sheet

Strathmore Place Historic District
Memphis, Shelby County, TN

Section number 7 Page 3

Garage, ca. 1940-45. One story with loft, two-bay, frame, gable roof, asphalt shingles, weatherboard siding. (C)

06 290 Strathmore Circle, East (C) One-story, five-bay, stucco-veneered bungalow with Craftsman influence, built ca. 1925-30. Complex hip and gable roof with jerkinheads, plain projecting eaves and shaped bargeboard, covered with asphalt shingles. Windows are 6/1 double-hung sashes, some in pairs. Partial-width gable-front porch supported by box columns; and, side, one-bay gable-front porch supported by stuccoed piers enclosed ca. 1980 with single-light fixed sashes. Entrance set in arched surround contains a single-light, one-panel door.

Garage, ca. 1925-30, altered ca. 1990. One-story, two-bay, frame, hip roof, asphalt shingles, exterior plywood siding, replacement bay and pedestrian doors. (NC)

07 300 Strathmore Circle, East (C) One and one-half story, five-bay, frame center hall plan house with Dutch Colonial Revival influence, built ca. 1921-22. Side gambrel roof with flared eaves, box cornice and shed-roofed dormer containing six, Craftsman 4/1 double-hung sashes, covered with asphalt shingles. Exterior wall surfaces covered with weatherboard siding. Windows are Craftsman 4/1 double-hung sashes, some in pairs. Side, one-bay, hip-roofed porch supported by columns with Doric capitals and enclosed with multi-light doors; and, added side, one-bay, side-gable porch supported by simple posts built ca. 1975. Entrance set in one-bay, gable-front porch with pediment supported by columns with Doric capitals, containing a six-panel door flanked by full-length multi-light sidelights.

Quarters/carport, ca. 1955-60. One-story, two-bay, frame, low gable roof supported by metal poles, exterior plywood siding, 2/2 double-hung sashes, six-panel door. (NC)

08 301 Strathmore Circle, East (C) One and one-half story, five-bay, stucco-veneered bungalow variation with Craftsman and Mission influence, built ca. 1925-30. Complex hip and flat roof with varietal Mission-style parapets, deep box cornice, curved knee brace brackets, and a flat and hip-roofed monitor with 16/1 double-hung sashes, covered with asphalt shingles. Windows are 6/1 double-hung sashes, some in groups of four. Side, one-bay hip and flat roofed porch with segmental and flat arches supported by stuccoed piers, enclosed ca. 1980 with fixed light sashes; and, a side, two-bay carport added ca. 1980, supported by stuccoed piers. Entrance contains a Mission multi-light door.

Garage, ca. 1925-30. One-story, two-bay, stucco veneer, gable and hip roof, asphalt shingles, replacement overhead bay doors. (C)

09 302 Strathmore Circle, East (C) One and one-half story, three-bay, stucco-veneered English cottage variation with Craftsman influence, built ca. 1925-30. Complex gable, asymmetrical bell-cast gable, and hip roofs with side shed dormers added ca. 1970, and plain projecting eaves, covered with asphalt shingles. Exterior walls feature a brick wainscot. Windows are 6/1 double-hung sashes, some in pairs, and multi-light diaper-pattern casements, some flanked by built-in paneled shutters and set within peaked entablatures. Entrance set in arched reveal and contains a multi-light board and batten door; a side entrance contains a multi-light door.

Garage, ca. 1925-30, altered ca. 1980. One-story, two-bay, frame, gable and shed roof, asphalt shingles, exterior plywood siding, multi-light fixed-sash replacement windows, replacement cross brace door. (NC)

Strathmore Circle, North

10 2346 Strathmore Circle, North (C) Two-story, four-bay, stucco-veneered four-square variation with Mediterranean Revival influence, built ca. 1945. Flat roof with enclosed monitor and flush metal coping with some pantile caps, covered with built-up asphalt roofing. Windows are 6/1 and 8/1 double-hung sashes, some are metal frame replacements; first floor features semi-circular arched 7/1 double-hung sashes in groups of three surrounded by brick

**United States Department of the Interior
National Park Service**

**National Register of Historic Places
Continuation Sheet**

**Strathmore Place Historic District
Memphis, Shelby County, TN**

Section number 7 Page 4

entablature. Side, one-bay porch supported by stuccoed piers enclosed ca. 1960 with single-light fixed sashes. Entrance beneath closed shed hood covered with pantiles, with an ogee entablature containing a multi-light ogee double-door.

Garage, ca. 1945-50. One-story, two-bay, stucco veneer, flat roof, replacement overhead doors. (C)

11 2351 Strathmore Circle, North (C) Two-story, four-bay, brick-veneered four-square with Colonial Revival influence, built ca. 1925-30. Hip roof with boxed cornice, covered with asphalt shingles. Windows are 6/1 double-hung sashes. Side, three-bay porch covered with a flat roof, supported by brick piers. Entrance has a closed pediment with frieze supported by paired modified Doric pilasters, and contains a three-light, two-panel door topped with a segmental-arched three-light transom; to the side is a multi-light double-door topped with a multi-light transom.

Garage/quarters, ca. 1925-30. One-story, two-bay, frame, hip roof, asphalt shingles, weatherboard siding. (C)

12 2352 Strathmore Circle, North (C) One and one-half story, six-bay, stucco-veneered English cottage with Tudor Revival and Mission influences, built ca. 1925-30. Complex gable roofs with box cornice and gable end with decorative bargeboard, covered with asphalt shingles. Exterior walls have a brick wainscot, and a battered projecting front wall chimney. Windows are 8/8 double-hung sashes, some in pairs. Entrance set in projecting battered-wall vestibule with Mission-style peaked and stepped parapet, with a semi-circular arched surround containing a multi-light/one panel door; to the side is a multi-light double door.

Garage, ca. 1925-30. One-story, two-bay, stucco-veneer, gable and hip roof, asphalt shingles. (C)

13 2360 Strathmore Circle, North (C) Two-story, three-bay, stucco-veneered four-square with Craftsman influence, built ca. 1925-30. Hip roof with flared eaves and box cornice, covered with asphalt shingles. Windows are 4/4 and 4/2 double-hung sashes, some in groups of two or three. Front facade features a battered, asymmetrical chimney inset with a sundial. Entrance set within a brick surround of asymmetrical quoins, and contains a two-light, two-panel door; a side entrance covered with arched hood supported by brackets contains a multi-light door.

Garage, ca. 1925-30, altered ca. 1990. One-story, two-bay, stucco-veneer, pyramidal roof with added cupola, asphalt shingles, bay doors replaced with multi-light double doors. (NC)

14 2365 Strathmore Circle, North (NC) One and one-half story, three-bay, stucco-veneered bungalow with Craftsman influence, built ca. 1921 and altered ca. 1990. Complex gable roof with gable roof monitor, and plain projecting eaves with bead board, covered with asphalt shingles. Some exterior wall surfaces covered with added exterior plywood siding. Windows are 6/1 and 4/4 double-hung sashes; some openings replaced with multi-light fixed sashes, and, a bay window added to one side. One-half width, gable-front porch with side gable porte cochère supported by piers covered with exterior plywood siding. Entrance contains a six-light, three-panel door.

15 2366 Strathmore Circle, North (C) Two-story, five-bay, brick and stucco-veneered four-square with Colonial Revival and Craftsman influences, built ca. 1925-30. Complex hip roof with box cornice and cornice brackets, covered with flat tiles. Windows are Craftsman multi-light/1 double-hung sashes in groups of two or three. Symmetrical side, setback one-bay wings have a sleeping porch above an open porch; one porch enclosed with single-light fixed sashes ca. 1975. Entrance set in one-bay, projecting gable-front vestibule with jerkinhead, containing a leaded light door topped by a segmental-arched fan light transom.

Garage/quarters, ca. 1925-30. Two-story, three-bay, hip roof, asphalt shingles, weatherboard siding, 1/1 double-hung sashes, single-light pedestrian door. (C)

16 2374 Strathmore Circle, North (C) One and one-half story, three-bay, stucco-veneered house with Mediterranean Revival influence, built ca. 1925-30. Complex gable roof with box cornice, covered with asphalt shingles. Windows are 1/1 double-hung sashes replacement lights. Side, one-bay, flat-roofed porch supported by brick piers

United States Department of the Interior
National Park Service

National Register of Historic Places
Continuation Sheet

Strathmore Place Historic District
Memphis, Shelby County, TN

Section number 7 Page 5

enclosed ca. 1950 with multi-light metal-frame replacement casements. Entrance set in arched recess containing a twelve-light, one-panel door.

Garage, ca. 1925-30. One-story, two-bay, stucco veneer, hip roof, asphalt shingles, overhead replacement bay doors. (C)

17 2378 Strathmore Circle, North (C) Two-story, four-bay, stucco-veneered four-square variation with Mediterranean Revival and Tudor Revival influences, built ca. 1925-30. Complex hip roof with box cornice, covered with asphalt shingles. Exterior walls have a brick wainscot. Windows are 8/8, 8/12 and 4/4 double-hung sashes, some in groups of three and four. Entrance contained in projecting one-bay, shed-roofed vestibule, containing an entablature with C-scroll motifs over an ogee-headed, double-arched, multi-light door; and, a side door set in a gable-front vestibule contains an arched entablature with C-scroll motifs over a multi-light double door with multi-light sidelights.

Garage, ca. 1925-30. One-story, one-bay, frame, gable roof, asphalt shingles, weatherboard siding, six-light, one-panel bay doors. (C)

Strathmore Circle, South

18 2349 Strathmore Circle, South (C) One and one-half story, three-bay, stone-veneered house with Tudor Revival and Craftsman influences, built ca. 1921. Complex gable roof with exposed rafter tails, covered with asphalt shingles. Exterior wall surfaces are quarry-faced rubblework ashlar; gable ends are stuccoed and half-timbered. Windows contain multi-light diaper-pattern/1 double-hung sashes. Partial-width, gable-front porch supported by ashlar piers; side, side-gable porte cochère supported by ashlar piers; and, side undercut porch enclosed ca. 1970 with large, single-light fixed sashes.

Garage, ca. 1921. Two-story, two-bay, frame, hip roof, asphalt shingles, weatherboard siding, replacement bay doors, 2/2 double-hung sashes. (C)

19 2355 Strathmore Circle, South (NC) Two-story, three-bay, brick and stucco veneered four-square variation with Craftsman and Tudor influences, built ca. 1921 and altered ca. 1965-70. Complex gable roof with side shed dormers, exposed rafter tails and knee brace brackets, covered with asphalt shingles. The upper wall surfaces are stuccoed and half-timbered. Windows are Craftsman multi-light/1 double-hung sashes, some in pairs; some original openings have been altered or enclosed. Porch removed and replaced with flared metal hood. Entrance contains a Craftsman multi-light and two-panel door, topped with a Craftsman multi-light transom.

20 2359 Strathmore Circle, South (C) One-story, four-bay, stucco veneered front gable double-pile cottage with Tudor Revival and Colonial Revival influences, built ca. 1921-25, with a side one-bay addition built ca. 1950-55. Complex gable roof with box cornice, covered with asphalt shingles. Windows are 6/6 double-hung sashes, some flanked by 2/2 double-hung sashes. Front gable end contains a bay window. Entrance covered with shed roofed hood supported by curved-brace brackets. Entrance contains a six-panel door flanked by multi-light sidelights.

Garage, ca. 1940. One-story, three-bay, stucco veneer, gable roof, asphalt shingles, multi-light fixed-sash windows. (C)

21 2364 Strathmore Circle, South (C) Two-story, five-bay, stucco and stone-veneered four square variation with Craftsman influence, built ca. 1921. Complex gable roof with jerkinheads and exposed rafter tails, covered with asphalt shingles. Exterior wall surfaces have stucco and half-timbering above a wainscot of quarry-faced rubblework ashlar. Windows contain 9/1 double-hung sashes, in pairs or groups of three and four. Partial-width, gable-front porch supported by an over-scale knee brace bracket and an added box column; a side wing has a sleeping porch above a porte cochère, supported by stuccoed piers; and, a side shed-roofed frame porch added ca. 1950. Entrance contains a Craftsman multi-light and single-panel door, flanked by single-light, one-third length sidelights.

Garage, ca. 1921. One-story, one-bay, frame, hip roof, asphalt shingles, weatherboard siding. (C)

**United States Department of the Interior
National Park Service**

**National Register of Historic Places
Continuation Sheet**

**Strathmore Place Historic District
Memphis, Shelby County, TN**

Section number 7 Page 6

22 2367 Strathmore Circle, South (C) One-story, four-bay, brick veneered English cottage with Tudor Revival and Colonial Revival influences, built ca. 1945. Complex gable roof with flush eaves, covered with asphalt shingles. Windows contain 6/1 and 8/1 double-hung sashes, some in pairs. Entrance set in projecting gable-front vestibule surrounded by articulated arched entablature with radiating voussoirs, containing multi-panel door.

Garage, ca. 1945-50, altered ca. 1960. One-story, one-bay, brick veneer, hip roof, asphalt shingles, bay door bricked-in. (NC)

23 2373 Strathmore Circle, South (NC) Two and one-half story, five bay, brick-veneered center hall plan house with Colonial Revival influence, built ca. 1960-65. Side gable roof with gable-front dormers, box cornice with a dentil frieze, covered with asphalt shingles. Windows are 6/9 double-hung sashes. Entrance set in a entablature topped with a broken pediment, containing a six-panel door.

Garage, ca. 1960-65. One-story, one-bay, frame, gable roof, asphalt shingles, Masonite siding, 6/6 double-hung sashes. (NC)

24 2382 Strathmore Circle, South (C) Two-story, three-bay, brick and stucco veneered house with Spanish Revival influence, built 1921. Complex gable roof with flush eaves, covered with pantiles. Exterior wall surfaces have raked brick veneer on the first floor level with stucco above. Windows are Craftsman multi-light/1 double-hung sashes, some in groups of three; an over-scale semi-circular arched opening contains a fan light and 12/12 double-hung sashes. Partial-width, gable-front porch supported by brick piers. Entrance contains a multi-light double-door with a multi-light transom and full-length multi-light sidelights.

Garage/quarters, ca. 1921. One-story, three-bay, complex gable and shed roof, asphalt shingles, weatherboard siding, solid replacement garage door, Craftsman multi-light/1 double-hung sashes, Craftsman multi-light/one-panel doors. (C)

25 2383 Strathmore Circle, South (C) Two-story, three-bay, brick-veneered four square variation with Colonial Revival influence, built ca. 1922. Complex hip roof with box cornice, deep eaves and paired cornice brackets, covered with asphalt shingles. Windows are 6/1 and 8/1 double-hung sashes. Full-width, flat-roofed, L-shaped porch with triglyphs in frieze, supported by brick piers; porch partially enclosed ca. 1965-70. Side wing with undercut porte cochère partially enclosed with rear additions ca. 1965-70; side porte cochère added in front of original ca. 1965-70. Entrance set in segmental arched opening containing multi-light double doors topped with multi-light transom.

Garage/quarters, ca. 1924-25. Two-story, three-bay, frame, hip roof, asphalt shingles, weatherboard siding, 9/1 double-hung sashes, replacement garage doors. (C)

26 2387 Strathmore Circle, South (C) One-story, four-bay, brick-veneered bungalow with Craftsman influence, built ca. 1921. Complex gable roof with shaped cornice brackets, covered with asphalt shingles. Gable ends are stuccoed and half-timbered. Windows are 6/1 and 4/1 double-hung sashes, some in groups of three. Partial-width, gable-front porch supported by battered piers of quarry-faced rubblework ashlar, with a closed rubblework ashlar balustrade. Entrance contains a six-panel replacement door, flanked by half-length multi-light sidelights.

United States Department of the Interior
National Park Service

National Register of Historic Places Continuation Sheet

Strathmore Place Historic District
Memphis, Shelby County, TN

Section number 8 Page 7

NARRATIVE STATEMENT OF SIGNIFICANCE

The Strathmore Place Historic District is being nominated under criterion C in the area of architecture for its significant collection of residences built in a range of architectural styles between ca. 1920 and ca. 1945. The district also possesses significance under criterion A in the area of community planning and development in ca. 1917 as a representative example of one of Memphis' early, exclusive "automobile subdivisions". The nomination of this district and the resources it contains is consistent with the property types and registration requirements established in the Multiple Property Documentation Form of "Historic Residential Resources of Memphis, Shelby County, Tennessee".

The plat for the Strathmore Place Subdivision was filed by real estate agent Ernest C. Cook and recorded on March 14, 1917. From the start, it appears that Cook's intention was to develop Strathmore Place as a middle- to upper-middle income residential neighborhood, one in which the automobile was a necessary part of every day life. The development found favor with the growing ranks of white collar professionals that emerged in the booming Memphis economy of the 1910s and 1920s.

The U-shaped street plan and its resulting lot layout were designed with the assistance of James T. Ferguson & Son, a local civil engineering firm. Originally, the subdivision was intended to have three street names: Strathmore Place on the south, Lysmore Place on the east, and Brentmore Place on the north, though these names were apparently never accepted by the Postal Service and city directories. Confusion remained until the mid-1930s, however, when the residents of the subdivision petitioned the Memphis City Council to rename the streets to Strathmore Circle North, East and South.

The design of the subdivision plan was influenced by several factors, including City Beautiful Movement principles of city planning, the accommodation of the automobile in subdivision planning, and the growing body of local subdivision regulations to guide real estate development.

The general design of Strathmore Place was intended to isolate residential development from the effects of unregulated development and traffic, not unlike "The Places," the gated communities of St. Louis, developed beginning in the 1890s. Though Strathmore Place was not a private, gated street, the U-shaped street design provided easy access to the arterial street (East Parkway) while eliminating through traffic to all but the residents and the curious. In effect, its design served as a means to regulate traffic volume and flow, and its inward-facing arrangement of lots provided a measure of control over the effects of future surrounding development, a concept familiar to the advocates of the City Beautiful Movement. In 1917, Memphis was still six years away from adopting its first zoning code.

United States Department of the Interior
National Park Service

National Register of Historic Places Continuation Sheet

**Strathmore Place Historic District
Memphis, Shelby County, TN**

Section number 8 Page 8

The earliest known example of this general design approach to residential subdivision planning in Memphis was the Fountain Court Subdivision, developed beginning in 1907 (NR submitted with this MPDF). The local source for the design of Fountain Court is not clear, though the arrangement of residences facing a tree-lined median was a treatment energetically advocated at the time by George Kessler in his capacity as landscape architect for the Memphis Park Commission (see Memphis Park and Parkways System, NR 7/03/1989). Fountain Court was developed before the beginning of the age of the automobile in Memphis, and its access to the McLemore Avenue street car line was critical to its development. Strathmore Place, on the other hand, was a development reliant upon the automobile due to its location remote from street car lines. Even so, the similarities between the two were linked together by the practice of using design as a tool for controlling traffic and to provide isolation from surrounding development. Memphis subdivisions developed through time with the same concepts in mind include Morningside Heights (designed by George Kessler, ca. 1914), Belleair Woods (1927), The Village (designed by J. Frazier Smith, 1938), and others.

Strathmore Place was designed from the start as an automobile suburb. Though oriented toward East Parkway for access and egress, its location was a considerable distance from the Raleigh Springs trolley line to the north, at Broad and East Parkway. The Memphis Parkway System was developed beginning in 1904, when the automobile was just beginning to have an effect on the American scene; but the Memphis Parkways were designed as largely pleasure drives and were only served by trolley lines at a few intersections. They were not designed as arterial streets, but evolved into that role. The first house known to have been developed facing one of the Parkways was not constructed until 1912-13 (see Joseph Newburger House, 168 East Parkway South, NR 4/29/1982). Even though Henry Ford's Model T began to make the automobile accessible to the masses in 1914, the automobile was still a luxury for most people until after World War I. Strathmore Place, though, was designed for the families who could afford the automobile, and its plan specifically set aside a "Location for Garage" on two of its lots (Plat Book 7:74): the two inside corner lots most constrained by building setback lines. The other lots of the subdivision were provided with ample room to allow the flexible placement of garages and did not require this level of concern by the subdivision planners.

Physical development of Strathmore Place apparently began in 1917 with the development of Everett Cook's own home, located at "18 Strathmore Place" (Polk 1917). The further development of the subdivision over the next few years is not clear. Cook disappears from the city directories after 1917, and with it, the listing for his home. It is not certain that Cook's home is one of those surviving in the district today, since the method of numbering street addresses changed when listings for the street reappeared in the 1921 city directory.

United States Department of the Interior
National Park Service

National Register of Historic Places Continuation Sheet

**Strathmore Place Historic District
Memphis, Shelby County, TN**

Section number 8 Page 9

Development of the subdivision following Cook is not precisely documented; one speculation is that it may have been D. L. Toombs, an agent of "city real estate, Shelby County farms and Delta plantations" (Polk 1920) who maintained an office in the Odd Fellows Building on Court Avenue, next door to Cook's former office. City directories show that Toombs lived at 2355 Strathmore in 1921, the year that listings for the development reappeared in the publication. Toombs' home was one of seven properties noted in the 1921 city directory, indicating that the development of Strathmore Place was then already well under way (Polk 1921).

The residential enclave that emerged in the 1920s became a choice address for lawyers, doctors, and upper-level managers of local companies, including automobile dealerships, lumber companies and insurance agencies. The houses built for them ranged from mid-sized and somewhat modest bungalows and variations on four-square houses to houses obviously designed by some of the prominent architects of Memphis during the first three decades of the twentieth century. Unfortunately, the identity of all of these architects and designers is not documented, though the hand of George Mahan (1887-1967) and/or James Broadwell (1883-ca. 1930) is suspected in the design of some; by example, attribution by oral history is given to Broadwell in the design of the house at 292 East Parkway (#02), built after the dissolution of his partnership with George Mahan in 1924 (Emison 1998).

The Mission Revival, Mediterranean Revival and Tudor Revival variation houses standing in Strathmore Place are some of the best designed in the city of Memphis; they compare very well with some of their larger contemporaries in the Central Gardens Historic District (NR 9/09/1982), the Goodwyn Street Historic District (NR 3/09/1980), and Evergreen Historic District (NR 1/11/1985), among other middle- to upper-income residential areas of Memphis.

The Strathmore Place district was completely "built-out" by the late 1930s; it contains only one house not originally constructed during the period of its significance. This house (#23, 2373 Strathmore Circle, South), was built to replace an earlier house destroyed by fire. In spite of its recent origin, the house's design and detail are highly compatible with the defining characteristics of the district, although the house cannot be considered historically significant.

The Strathmore Place Historic District contains a remarkable variety of residences built in the period of ca. 1917 to ca. 1945 which serve as a representative microcosm of architectural styles and housing types for this period. The site plan for this subdivision demonstrates important characteristics of urban planning and design in Memphis, which in turn reflect broader patterns of issues in the area of urban planning and design in Memphis during the early twentieth century.

United States Department of the Interior
National Park Service

National Register of Historic Places

Continuation Sheet

Strathmore Place Historic District
Memphis, Shelby County, TN

Section number 9 Page 10

MAJOR BIBLIOGRAPHICAL REFERENCES

Emiston, Joe, Jr.

Personal Communication With John Linn Hopkins, March, 1998.

Memphis Commercial Appeal, August 5, 1993, Section CE, page 2.

Polk, R. L. , Co.

Memphis City Directory 1917, 1920, 1921, 1922, 1925, 1934, 1940, 1961.

Scott, Mel

American City Planning Since 1890. Los Angeles: University of California Press, 1969.

Shelby County Plat Book 7:74.

Winter, Robert

The California Bungalow. Los Angeles: Hennessey & Ingalls, 1980.

United States Department of the Interior
National Park Service

National Register of Historic Places

Continuation Sheet

Strathmore Place Historic District
Memphis, Shelby County, TN

Section number 10 Page 11

GEOGRAPHICAL DATA

Verbal Boundary Description

The property in nomination includes land set out in Ernest Cook's Strathmore Place Subdivision, including the back property lines of structures facing Strathmore Circle North, East and South (lots 1 through 19 on the plat), and the entire frontage of the subdivision along East Parkway, including that of lots 1, 19, 20 and 28 of the subdivision plat, less approximately 1.6 acres set aside for the development of Katie Avenue along the south side of the subdivision.

Boundary Justification

The property in nomination includes the land associated with the Strathmore Place Subdivision and the structures developed within it during the period of significance.

United States Department of the Interior
National Park Service

National Register of Historic Places

Continuation Sheet

Strathmore Place Historic District
Memphis, Shelby County, TN

Section number Photographs Page 12

PHOTOGRAPH LIST

Photographs by: John L. Hopkins

Date: June 1998

Negatives: Tennessee Historical Commission

Photograph #1 of 9: View of 2349 Strathmore Circle, South, looking south.

Photograph #2 of 9: View of the south side of Strathmore Circle, South, looking southeast from 2359 Strathmore Circle, South, at left.

Photograph #3 of 9: View of 2382 Strathmore Circle, South, looking northwest.

Photograph #4 of 9: View of the east side of Strathmore Circle, East, looking southeast from 282 Strathmore Circle, East, at left.

Photograph #5 of 9: View of 301 Strathmore Circle, East, looking southwest.

Photograph #6 of 9: View of 302 Strathmore Circle, East, looking north.

Photograph #7 of 9: View of the north side of Strathmore Circle, North, looking northwest from 2366 Strathmore Circle, South.

Photograph #8 of 9: View of 292 East Parkway, looking southeast.

Photograph #9 of 9: View of 2365 Strathmore Circle, North, looking south.

**United States Department of the Interior
National Park Service**

**National Register of Historic Places
Continuation Sheet**

**Strathmore Place Historic District
Memphis, Shelby County, TN**

Section number Property Owners Page 13

PROPERTY OWNERS

(mailing address the same, unless otherwise noted)

East Parkway

- 01 280 East Parkway: Great Western Bank
Mail Stop N 01 38
P. O. Box 1093
Northridge, CA 91328
- 02 292 East Parkway: Willard and Eileen Greer

Strathmore Circle, East

- 03 276 Strathmore Circle, East: Peter Ray & Martha Porter
- 04 281 Strathmore Circle, East: Sara Woodmansee
- 05 282 Strathmore Circle, East: Jerry Barber
- 06 290 Strathmore Circle, East: Gwyn Guess
- 07 300 Strathmore Circle, East: Tom Brundige
- 08 301 Strathmore Circle, East: Stewart Waugh
- 09 302 Strathmore Circle, East: John F. Turner

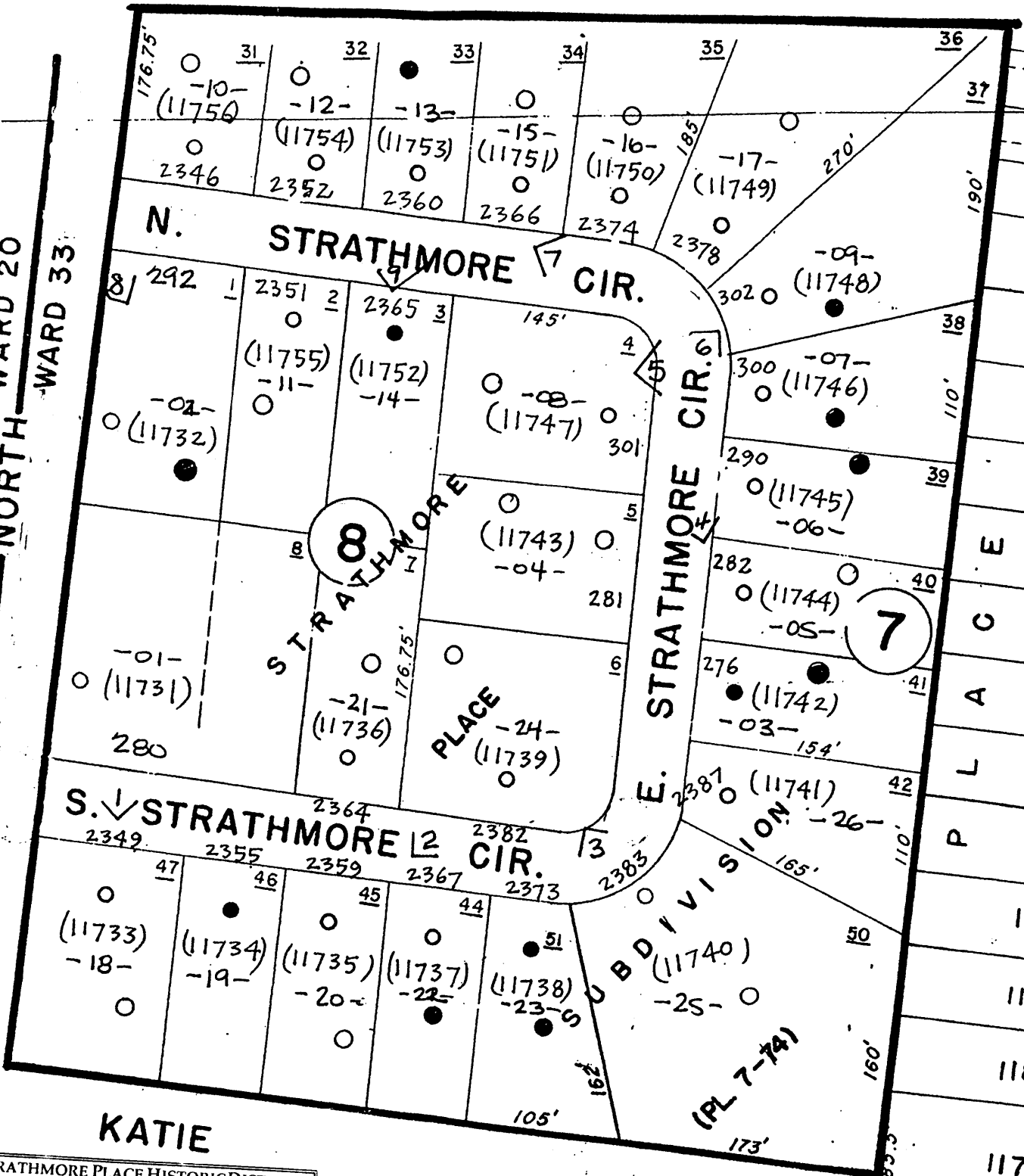
Strathmore Circle, North

- 10 2346 Strathmore Circle, North: G. B. and Linda Sharp
- 11 2351 Strathmore Circle, North: Leeann & David Kight
- 12 2352 Strathmore Circle, North: John Stone
- 13 2360 Strathmore Circle, North: Joyce Laws
- 14 2365 Strathmore Circle, North: Kate Hoch
- 15 2366 Strathmore Circle, North: William Haynes
- 16 2374 Strathmore Circle, North: Ronald J. Ryall
- 17 2378 Strathmore Circle, North: John Rice

Strathmore Circle, South

- 18 2349 Strathmore Circle, South: Virginia & Joe Emison, Jr.
- 19 2355 Strathmore Circle, South: Harry Loewenberg
- 20 2359 Strathmore Circle, South: Dee Birnbaum
- 21 2364 Strathmore Circle, South: J. L. Eason
- 22 2367 Strathmore Circle, South: Jane & Henry C. Nall, III
- 23 2373 Strathmore Circle, South: Stephen & Robin Behrman
- 24 2382 Strathmore Circle, South: Gwila A. Pemberton
- 25 2383 Strathmore Circle, South;

NORTH WARD 20
 WARD 33

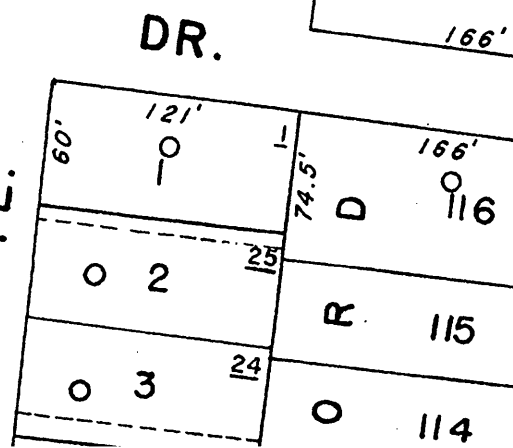
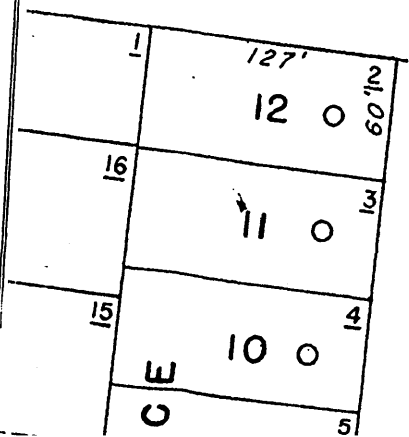


KATIE

STRATHMORE PLACE HISTORIC DISTRICT
 MEMPHIS, SHELBY COUNTY, TN

Scale: 1" = 100' ⊕ N

- National Register Boundary
- (11254) State/Local Survey Number
- 02- National Register Inventory Number
- Contributing Building
- Noncontributing Building
- ▲ Photo Location & Number



185.832'

ARKWAY

O V E R T O N P A R K



601

602

EASTWOOD AV. (PL.)

EAST PARKWAY N

STRATHMORE CIR (BRENTWOOD PL.)

784

S. STRATHMORE CIR

E. STRATHMORE CIR (PL.)

KATIE AV.

WILLIFORD

1786

N. HOLLYWOOD

781

1788

1st BAPTIST CHURCH

Memorial Building

W. C. GLENN

W. C. GLENN

W. C. GLENN

W. C. GLENN

W. C. GLENN

W. C. GLENN

W. C. GLENN

W. C. GLENN

W. C. GLENN

CRESTMERE PL.

POP.

Poplar Av

YALE AV.

60

HALL

HOLL

6

Strathmore Place Historic District
Shelby County TN

Sanborn map, n.d.