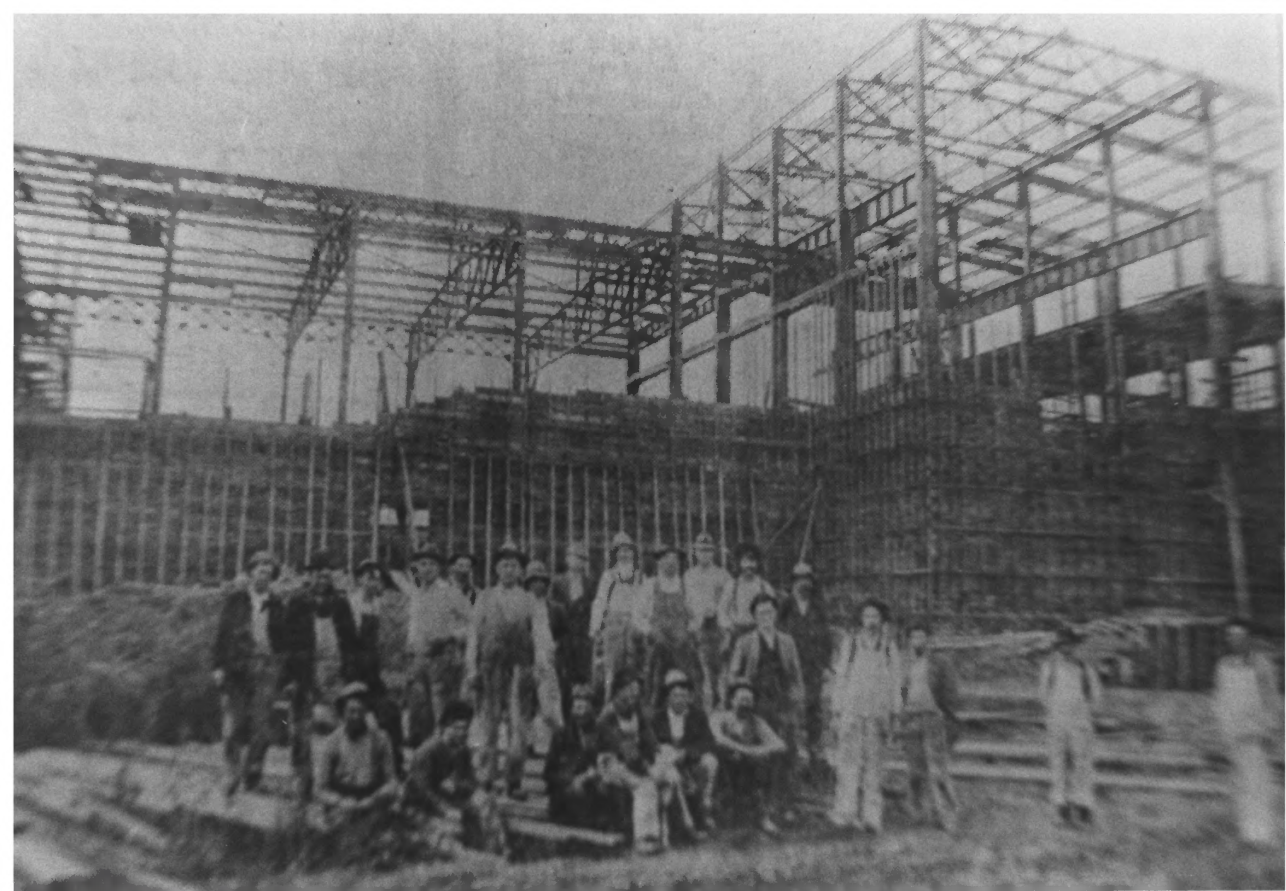




1. Libby McNeill & Libby  
Fruit & Vegetable Cannery
2. Sacramento, California
3. Original photo date unknown (Photo of  
photo)
4. 6/5/80 (Date of photo of photo)
5. 928 Second Street  
Sacramento, California 95814
6. Aerial view facing westerly
7. Photo No. 1 of 21

JAN 20 1982



1. Libby McNeill & Libby  
Fruit & Vegetable Cannery
2. Sacramento, California
3. Original photo date unknown (Photo of  
photo)
4. 6/5/80 (Date of photo of photo)
5. 928 Second Street  
Sacramento, California 95814
6. View of construction facing south-  
westerly
7. Photo No. 2 *of 21*

JAN 20 1982



1. Libby McNeill & Libby  
Fruit & Vegetable Cannery
2. Sacramento, California
3. Original photo date unknown (Photo of  
photo)
4. 6/5/80 (Date of photo of photo)
5. 928 Second Street  
Sacramento, California 95814
6. View of worker's cottages facing  
north-easterly
7. Photo No. 3 *of 21*

JAN 20 1982



1. Libby McNeill & Libby  
Fruit & Vegetable Cannery
2. Sacramento, California
3. Original photo date unknown (Photo of  
photo)
4. 6/5/80 (Date of photo of photo)
5. 928 Second Street  
Sacramento, California 95814
6. Office and receiving dock, circa 1920,  
facing north-westerly
7. Photo No. 4 of 21

JAN 20 1982





1. Libby McNeill & Libby  
Fruit & Vegetable Cannery
2. Sacramento, California
3. Original photo date unknown (Photo of  
photo)
4. 6/5/80 (Date of photo of photo)
5. 928 Second Street  
Sacramento, California 95814
6. Office and receiving dock, circa 1937,  
showing addition of balcony (galleria)  
above loading dock facing north-westerly
7. Photo No. 5 of 21

JAN 20 1982



1. Libby McNeill & Libby  
Fruit & Vegetable Cannery
2. Sacramento, California
3. Original photo date unknown (Photo of  
photo)
4. 6/5/80 (Date of photo of photo)
5. 928 Second Street  
Sacramento, California 95814
6. Warehouse Complex adjoining main cannery  
building and office, Stockton Blvd. front-  
age, circa 1937, facing south.
7. Photo No. 6 of 21

JAN 20 1982

Home of Libby's  
Tomato  
Products



Libby's  
Tomato  
Products

OFFICE



1. Libby McNeill & Libby  
Fruit & Vegetable Cannery
2. Sacramento, California
3. Edwin S. Astone
4. 6/5/80
5. 928 Second Street  
Sacramento, California 95814
6. South end of main building showing receiving dock, galleria removed and addition of small office on receiving dock, facing westerly
7. Photo No. 7 of 21

JAN 20 1982

Home of Libby's  
Tomato  
Products

Libby, McNeill & Libby

OFFICE

Libby



1. Libby McNeill & Libby  
Fruit & Vegetable Cannery
2. Sacramento, California
3. Edwin S. Astone
4. 6/5/80
5. 928 Second Street  
Sacramento, California 95814
6. Office and main cannery, along Stockton,  
showing elevated can conveyor feeding the  
main cannery processing area from can  
storage buildings, circa 1950's, facing  
north-westerly
7. Photo No. 8 of 21

JAN 20 1982





1. Libby McNeill & Libby  
Fruit & Vegetable Cannery
2. Sacramento, California
3. Edwin S. Astone
4. 6/5/80
5. 928 Second Street  
Sacramento, California 95814
6. General view of cannery complex showing  
ivy covered warehouse at the corner of  
Stockton and Alhambra Blvds., facing  
south
7. Photo No. 9 of 21

JAN 20 1982

Libby



1. Libby McNeill & Libby  
Fruit & Vegetable Cannery
2. Sacramento, California
3. Edwin S. Astone
4. 6/5/80
5. 928 Second Street  
Sacramento, California 95814
6. Warehouse No. 8 (most northerly of the  
cannery complex) showing Alhambra Blvd.  
frontage and a portion of the receiving  
and service yard, facing south-easterly
7. Photo No. 10 of 21

JAN 20 1982



1. Libby McNeill & Libby  
Fruit & Vegetable Cannery
2. Sacramento, California
3. Edwin S. Astone
4. 6/5/80
5. 928 Second Street  
Sacramento, California 95814
6. Receiving and service yard off of  
Alhambra Blvd. in between old warehouse  
complex (Buildings No. 7 & 8) and ware-  
house building No. 37. Also shows  
original concrete smoke stack, facing  
south-easterly
7. Photo No. 11 *of 21*

JAN 20 1982



1. Libby McNeill & Libby  
Fruit & Vegetable Cannery
2. Sacramento, California
3. Edwin S. Astone
4. 6/5/80
5. 928 Second Street  
Sacramento, California 95814
6. Shipping yard along Alhambra Blvd. and  
railroad spur line on right. Warehouse  
No. 37 is on left (curved configuration  
followed rail spur line) and the old can  
factory is in the rear center, facing  
easterly
7. Photo No. 12 of 21

JAN 20 1982





1. Libby McNeill & Libby  
Fruit & Vegetable Cannery
2. Sacramento, California
3. Edwin S. Astone
4. 6/5/80
5. 928 Second Street  
Sacramento, California 95814
6. Old can factory and warehouse along  
railroad frontage, warehouse No. 37  
on the left, facing easterly
7. Photo No. 13 *of 21*

JAN 20 1982



1. Libby McNeill & Libby Fruit & Vegetable Cannery
2. Sacramento, California
3. Brian Halloway
4. March, 1980
5. 711 J Street, Sacramento, California
6. Overview of interior from the plant main building. Photo direction is northwesterly and up.
7. Photo No. 14. of 21

JAN 20 1982



1. Libby McNeill & Libby Fruit & Vegetable Cannery
2. Sacramento, California
3. Brian Halloway
4. March, 1980
5. 711 J Street, Sacramento, California
6. Detail view of steel truss roof over raised frame sidelight of main building. Photo direction is up.
7. Photo No. 15. of 21

JAN 20 1982



1. Libby McNeill & Libby Fruit & Vegetable Cannery
2. Sacramento, California
3. Brian Halloway
4. March, 1980
5. 711 J Street, Sacramento, California
6. General view of side area of main building showing steel post and beam support system and wood frame roof system. Photo direction is north.
7. Photo No. 16. of 21

JAN 20 1982





1. Libby McNeill & Libby Fruit & Vegetable Cannery
2. Sacramento, California
3. Brian Halloway
4. March, 1980
5. 711 J Street, Sacramento, California
6. General overview of a typical warehouse construction showing mushroom headed reinforced column and beam system. Photo view is south.
7. Photo No. 17. of 21

JAN 20 1982



1. Libby McNeill & Libby Fruit & Vegetable Cannery
2. Sacramento, California
3. Brian Halloway
4. March, 1980
5. 711 J Street, Sacramento, California
6. Detail view of mushroom headed reinforced columns. View is southeasterly.
7. Photo No. 18. of 21

JAN 20 1982



1. Libby McNeill & Libby Fruit & Vegetable Cannery
2. Sacramento, California
3. Brian Halloway
4. March, 1980
5. 711 J Street, Sacramento, California
6. General overview of main floor looking in a south westerly direction across the main floor into the side area shown in Photo No. 16.
7. Photo No. 19. of 21

JAN 20 1982



1. Libby McNeill & Libby Fruit & Vegetable Cannery
2. Sacramento, California
3. Brian Halloway
4. March, 1980
5. 711 J Street, Sacramento, California
6. General view of second floor of warehouse showing basic reinforced columns and frame with brick walls including sky light. Photo direction is south.
7. Photo No. 20. of 21

JAN 20 1982





1. Libby McNeill & Libby Fruit & Vegetable Cannery
2. Sacramento, California
3. Brian Halloway
4. March, 1980
5. 711 J Street, Sacramento, California
6. Detail view of sky light, typical throughout upper floor of warehouse. Photo direction is up.
7. Photo No. 21. of 21

JAN 20 1982