



Bond District

Vicinity of Kapaau, Hawaii *County*

Photo by J.C. Wright

MAR 30 1978

June, 1973

Negative located at State Historic Preserva-  
tion Office, Honolulu, Hawaii

Main house and section of lava wall from west.

Buildings 13, 14, 2

Photo #7100A-4

Photo 1 of 19

OCT 25 1977

PROPERTY OF THE NATIONAL REGISTER



Bond District

Vicinity of Kapaau, Hawaii ~~County~~ MAR 30 1978

Photo by J.C. Wright

Negative located at State Historic Preservation Office, Honolulu, Hawaii

From left to right: Doctor's office, main house. Main buiding 1,3,4.

Photo #7100A-3

Photo 2 of 19

OCT 25 1977



Bond District

Vicinity of Kapaau, Hawaii *County*

Photo by J.C. Wright  
June, 1973

MAR 30 1978

Negative located at State Historic Preserva-  
tion Office, Honolulu, Hawaii

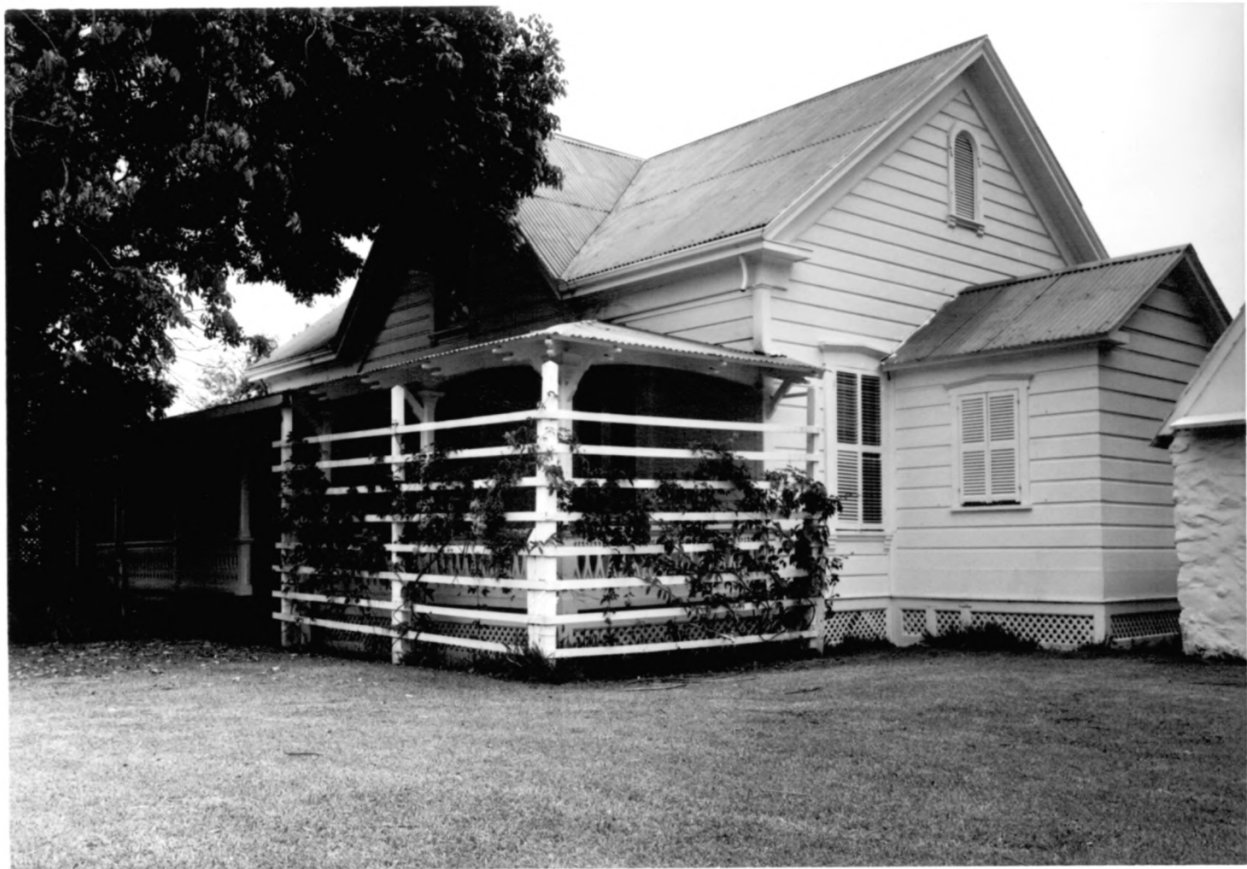
From left to right: chicken house, wash house,  
kitchen section of main house. Buildings  
13, 14, 2

Photo #7100A-1

OCT 25 1977

Photo 3 of 19

**PROPERTY OF THE NATIONAL REGISTER**



Bond District

Vicinity of Kapaau, Hawaii **County**

Photo by J.C. Wright

MAR 30 1978

June, 1973

Negative located in State Historic Preserva-  
tion Office, Honolulu, Hawaii

Cottage, Building 5

Photo #7100A-5

Photo 4 of 19

OCT 25 1977

PROPERTY OF THE NATIONAL REGISTER





Bond District

Vicinity of Kapaau, Hawaii *County*

MAR 30 1978

Photo by J.C. Wright

June, 1973

Negative located at State Historic Preserva-  
tion Office, Honolulu, Hawaii

Earthquake damage, workshop building.

Photo #7100A-7      Building 6

Photo 5 of 19

OCT 25 1977

PROPERTY OF THE NATIONAL REGISTER



Bond District

Vicinity of Kapaau, Hawaii ~~County~~ MAR 30 1978

Photo by J.C. Wright

Negative located at State Historic Preservation Office, Honolulu, Hawaii

Detail of roof structure in workshop

Detail of queen post structural system, Bldg 6

Photo #7100A-10

Photo 6 of 19

OCT 25 1977

**PROPERTY OF THE NATIONAL REGISTER**



Bond District

Vicinity of Kappau, Hawaii **County**

Photo by J.C. Wright

**MAR 30 1978**

Hune, 1973

Negative located at State Historic Preserva-  
tion Office, Honolulu, Hawaii

Workshop building. Note notches in rafters  
for thatch. Bldg. 6

Photo #7100A-8

Photo 7 of 19

**OCT 25 1977**



Bond District

Vicinity of Kapaau, Hawaii **County**

Photo by J.C. Wright.

June, 1973

Negative located at State Historic Preserva-  
tion Office, Honolulu, Hawaii

Servant's cottage, looking south into service  
yard. Buildings 15-20

Photo #7100B-1

Photo 8 of 19

OCT 25 1977

MAR 30 1978





Bond District, Kalahikiola Church  
Vicinity of Kapaau, Hawaii *County*

Photo by J.C. Wright

MAR 30 1973

June, 1973

Negative located at State Historic Preserva-  
tion Office, Honolulu, Hawaii

North view. Building 22

Photo #7101-2

Photo 9 of 19

OCT 25 1977

**PROPERTY OF THE NATIONAL REGISTER**



Bond District, Kalahikiola Church  
Vicinity of Kapaaau, Hawaii *County*

Photo by J.C. Wright

MAR 30 1978

June, 1973

Negative located at State Historic Preserva-  
tion Office, Honolulu, Hawaii

Northview, with arch. Building 22

Photo #7101-1

Photo 10 of 19

OCT 25 1977



Bond District, Kalahikiola Church  
Vicinity of Kapaau, Hawaii *County*

Photo by J.C. Wright

MAR 30 1978

June, 1973

Negative located at State Historic Preserva-  
tion Office, Honolulu, Hawaii

West end, showing earthquake damage

Photo #7101-4

Building 22

Photo 11 of 19

OCT 25 1977

PROPERTY OF THE NATIONAL REGISTER



Bond District, Kalahikiola Church  
Vicinity of Kapaau, Hawaii **County**

Photo by J.C. Wright

MAR 30 1978

June, 1973

Negative located at State Historic Preserva-  
tion Office, Honolulu, Hawaii

Interior, pulpit area.

Photo #7101-9      Building 22

Photo 12 of 19

OCT 25 1977

PROPERTY OF THE NATIONAL REGISTER





Bond District, Kalahikiola Church  
Vicinity of Kapaau, Hawaii *County*

Photo by J. C. Wright

MAR 30 1978

June, 1973

Negative located at State Historic Preserva-  
tion Office, Honolulu, Hawaii

Interior

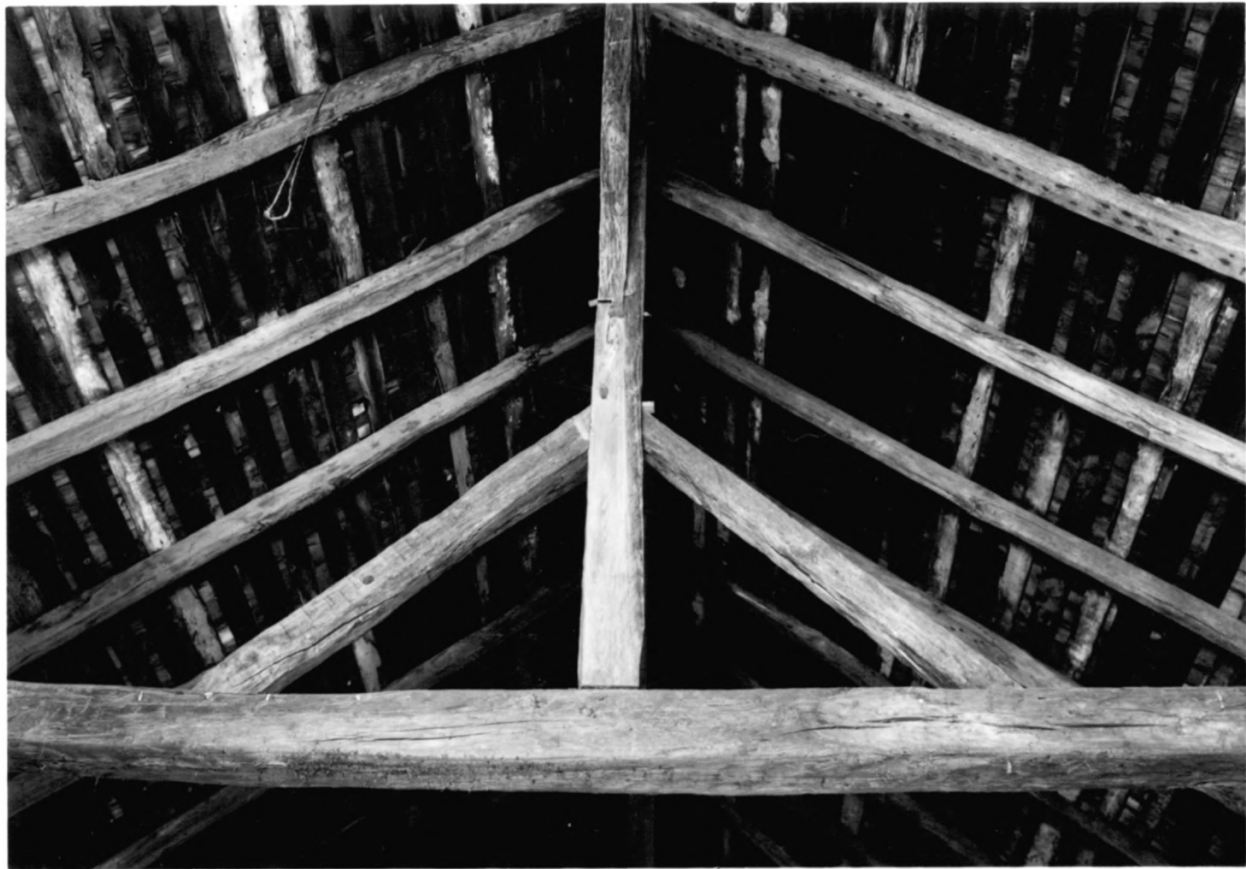
Building 22

Photo #7101-8

Photo 13 of 19

OCT 25 1977

*HAWAII 1-3*



Bond District, Kalahikiola Church  
Vicinity of Kapaau, Hawaii **County**

Photo by J.C. Wright

MAR 30 1978

June, 1973

Negative located at State Historic Preserva-  
tion Office, Honolulu, Hawaii

Roof framework, king post system

Photo #7101-16

Photo 14 of 19

OCT 25 1977

**PROPERTY OF THE NATIONAL REGISTER**



Bond District, Kalahikiola Church  
Vicinity of Kapaau, Hawaii **County**

Photo by J.C. Wright

June, 1973

Negative located at State Historic Preserva-  
tion Office

Roof framework, southwest

Photo #7101-15 Queen post system

Photo 15 of 19

**MAR 30 1978**

**OCT 25 1977**

**PROPERTY OF THE NATIONAL REGISTER**



Bond District

Main Building, Kohala Girl's School

Vicinity of Kapaau. Hawaii **County**

Photo by N. Bannick

OCT 25 1977

December, 1969

Negative located at Archives, State  
of Hawaii, Honolulu

Main building (dormitory classrooms,  
headmistress quarters) looking  
south (Kohala Seminary) Bldg. 29

Photo: 16 of 19

MAR 30 1978

**PROPERTY OF THE NATIONAL REGISTER**





Bond District

Main building(left) and Old School Hall  
(right), Kohala Girl's School

Vicinity of Kapaau, Hawaii **County**

Photo by N. Bannick, December 1969

Negative located at Archives, State of Hawaii  
Honolulu (Kohala Seminary) Bldgs. 29, 30

Photo 17 of 19

OCT 25 1977

MAR 30 1978



Bond District

Dining Hall, Kohala Girl's School

Vicinity of Kapaau, Hawaii **County**

Photo by N. Bannick, December 1969

Negative located at Archives, State of Hawaii

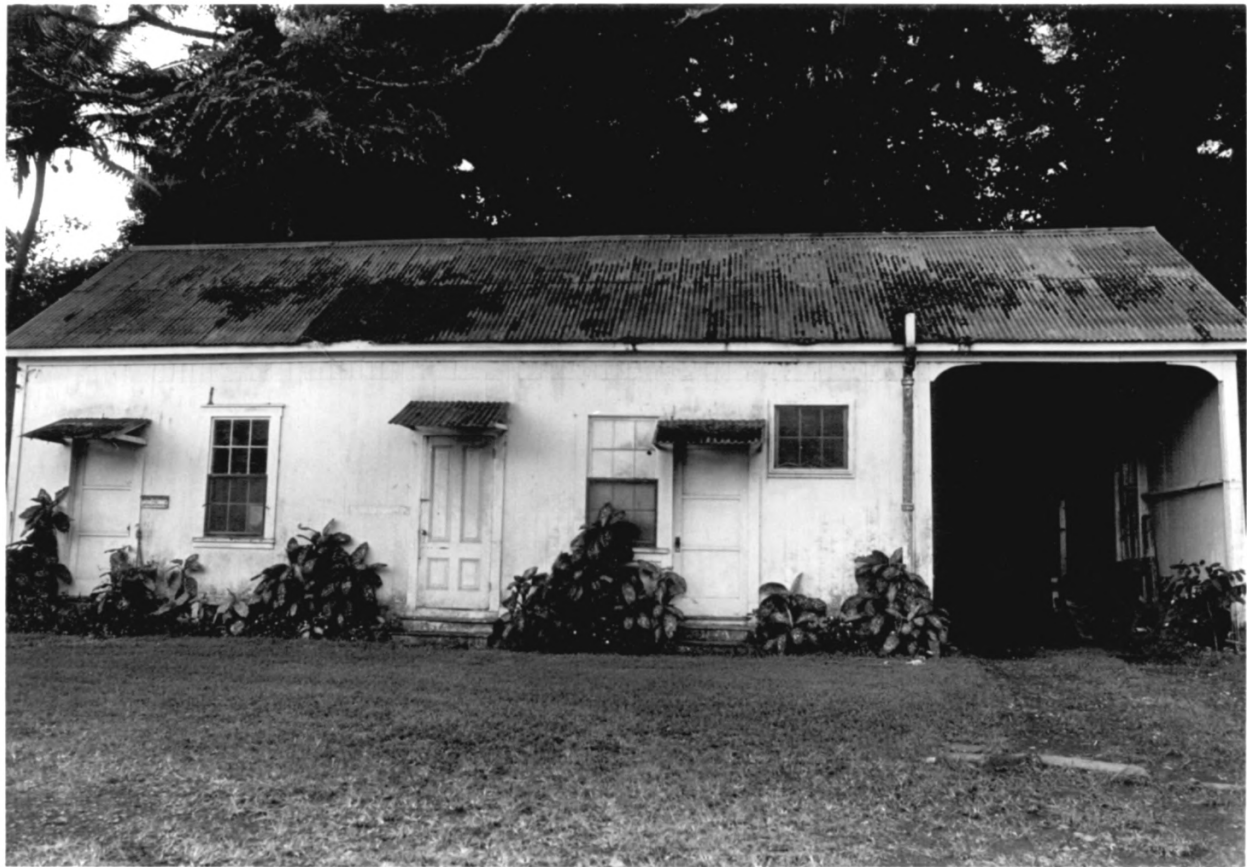
Honolulu (Kohala Seminary) Bldg. 31

Dining Hall, looking west

Photo 18 of 19

OCT 25 1977

MAR 30 1978



Bond District

Carriage house at Kohala Girl's School

Vicinity of Kapaau, Hawaii **County**

Photo by N. Bannick , December 1969

Negative located at Archives, State of Hawaii,  
Honolulu

Carriage house, looking south

(Kohala Seminary) Bldg. 32

Photo 19 of 19

OCT 25 1977

MAR 30 1978