

UNITED STATES DEPARTMENT OF THE INTERIOR
NATIONAL PARK SERVICE

**NATIONAL REGISTER OF HISTORIC PLACES
PROPERTY PHOTOGRAPH FORM**

FOR NPS USE ONLY	
RECEIVED	JUN 29 1977
DATE ENTERED	JUN 9 1978

SEE INSTRUCTIONS IN *HOW TO COMPLETE NATIONAL REGISTER FORMS*
TYPE ALL ENTRIES ENCLOSE WITH PHOTOGRAPH

1 NAME

HISTORIC

Hodgdon Homestead Cabin

AND/OR COMMON

Homesteaders Cabin

2 LOCATION

CITY, TOWN

____ VICINITY OF

COUNTY

STATE

Yosemite Nat'l Pk, Wawona, Pioneer History Center

Mariposa

CA

3 PHOTO REFERENCE

PHOTO CREDIT Dean Shenk

DATE OF PHOTO 10/75

National Park Service

NEGATIVE FILED AT

Western Regional Office, NPS, 450 Golden Gate Ave, Box 36063, San Francisco, CA

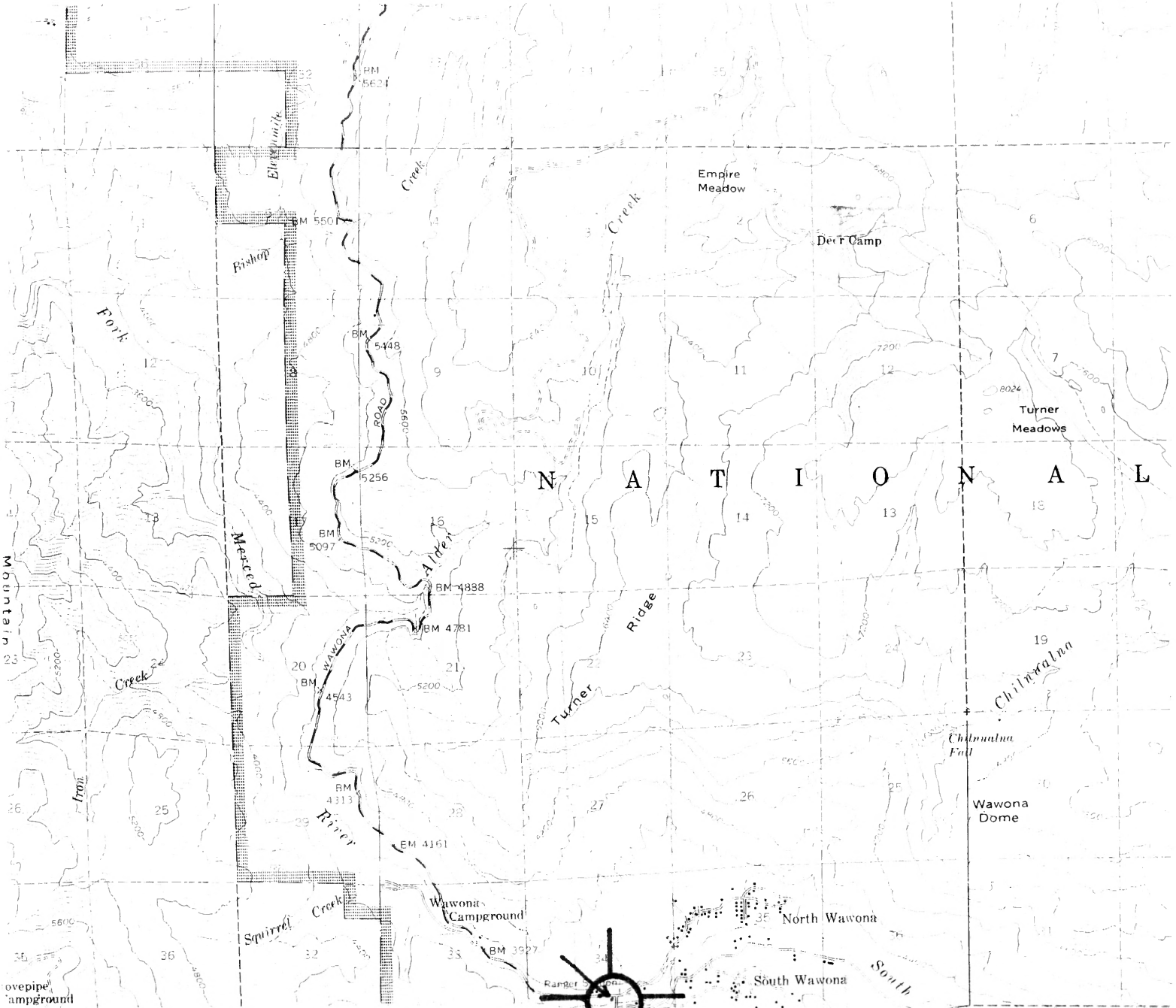
4 IDENTIFICATION

DESCRIBE VIEW, DIRECTION, ETC. IF DISTRICT, GIVE BUILDING NAME & STREET

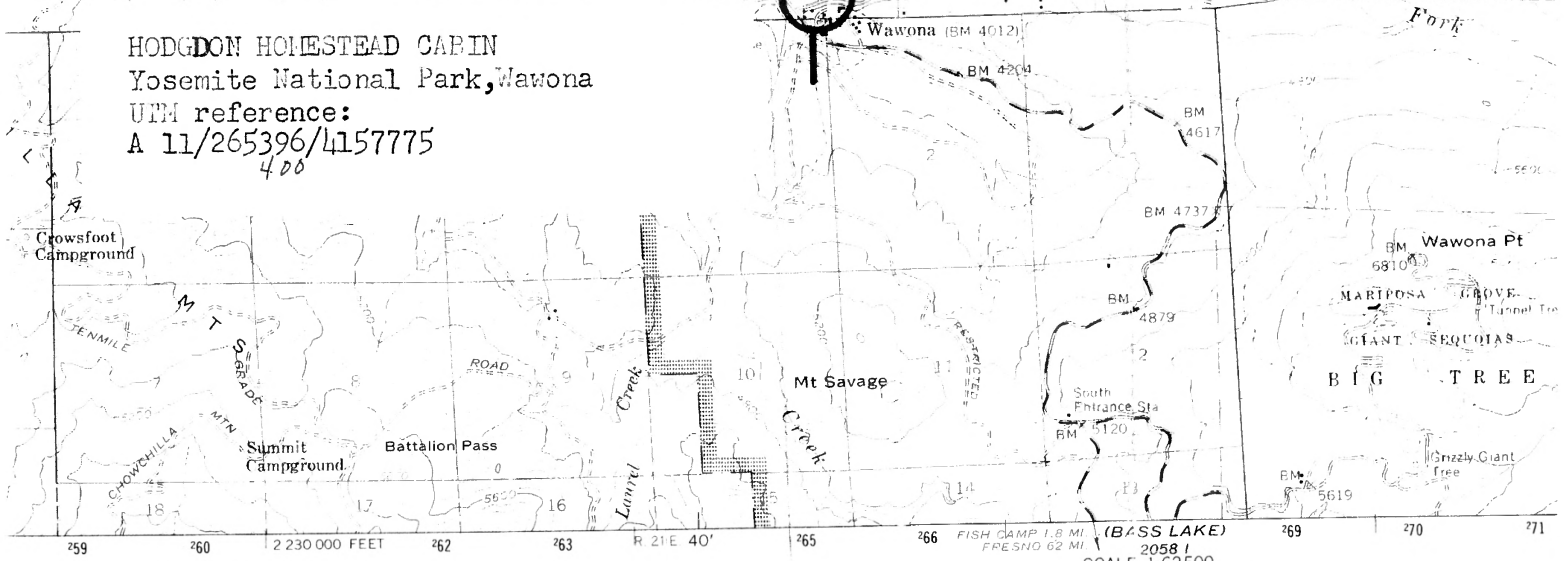
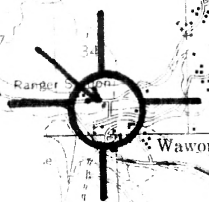
PHOTO NO.

Hodgdon Homestead Cabin southerly exposure

1



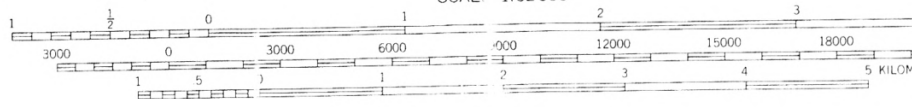
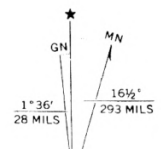
HODGDON HOMESTEAD CABIN
 Yosemite National Park, Wawona
 UTM reference:
 A 11/265396/4157775
 400



published by the Geological Survey

USGS
 Photographs by photogrammetric methods
 1955 Advance field check 1956

27 North American datum
 California coordinate system, zone 3
 reverse Mercator grid ticks



CONTOUR INTERVAL 80 FEET
 NATIONAL GEODETIC VERTICAL DATUM OF 1929