



BOEIVAT  
1912

NORTH MAIN STREET HISTORIC DISTRICT  
Bolivar, Hardeman County, Tennessee

Photo By: George F. Fielder

Date: November 1976

Neg: Tennessee Historical Commission  
Nashville, Tennessee

Baker House, "Mansion House" (No. 1);  
east and north elevations, facing southwest

#1 of 24

MAR 20 1979  
DOE

NOV 20 1979





NORTH MAIN STREET HISTORIC DISTRICT

Bolivar, Hardeman County, Tennessee

Photo By: George F. Fielder

Date: November 1976

Neg. Tennessee Historical Commission  
Nashville, Tennessee

Kahn House (No. 2); south and east  
elevations, facing northwest

#2 of 24

NOV 20 1979

DOE

MAR 20





NORTH MAIN STREET HISTORIC DISTRICT

Bolivar, Hardeman County, Tennessee

Photo By: George F. Fielder

Date: November 1976

Neg. Tennessee Historical Commission  
Nashville, Tennessee

Buchanan House, "Mallory Manor" facing

southwest

#3 of 24

NOV 20 1979

1  
No 3

DOE





NORTH MAIN STREET HISTORIC DISTRICT

Bolivar, Hardeman County, Tennessee

DOE  
MAR 20 1980

NORTH MAIN STREET HISTORIC DISTRICT

Bolivar, Hardeman County, Tennessee

Photo By: George F. Fielder

Date: November 1976

Neg. Tennessee Historical Commission  
Nashville, Tennessee

Thompson House, "The Manse" (No. 4); east  
and north elevations, facing southwest

#4 of 24

NOV 20 1979





BOLIVAR  
578 100 5

NORTH MAIN STREET HISTORIC DISTRICT

Bolivar, Hardeman County, Tennessee

Photo By: George F. Fielder

Date: November 1976

Neg. Tennessee Historical Commission  
Nashville, Tennessee

Wilson-Bradley House (No. 5); south  
and east elevations, facing northwest

#5 of 24

NOV 20 1979

DOE  
MAR 20 1980





**BOLIVAR**  
STR NO 6  
18 NOV 1975

NORTH MAIN STREET HISTORIC DISTRICT

Bolivar, Hardeman County, Tennessee

Photo By: George F. Fielder

Date: November 1976

Neg. Tennessee Historical Commission  
Nashville, Tennessee

Vincent House (No. 6); south and east  
elevations, facing northwest

#6 of 24

NOV 20 1979

DOE

MAR 20 1980





BOLIVAR  
1912

NORTH MAIN STREET HISTORIC DISTRICT

Bolivar, Hardeman County, Tennessee

Photo By: George F. Fielder

Date: November 1976

*DOE*  
MAR 20 1977

Neg. Tennessee Historical Commission  
Nashville, Tennessee

Mitchell House (No. 7); east and north  
elevations, facing southwest

#7 of 24

**NOV 20 1979**





BOLIVAR  
STR. NO. 12  
12 NOV 1926

NORTH MAIN STREET HISTORIC DISTRICT

Bolivar, Hardeman County, Tennessee

Photo By: George F. Fielder

Date: November 1976

Neg. Tennessee Historical Commission

Doyle-Wheeler House (No. 12); north

and west elevations, facing southeast

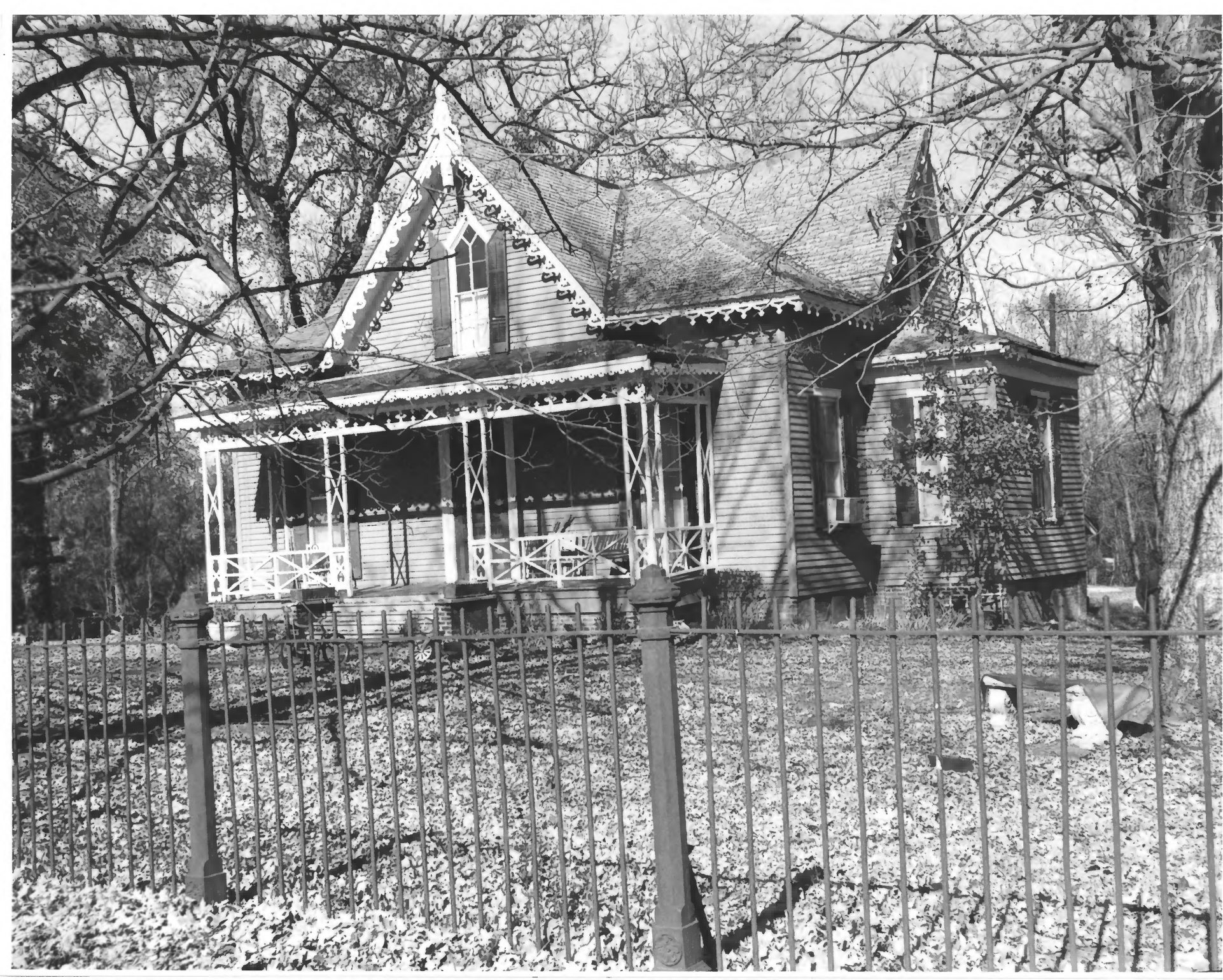
#8 of 24

*DOE*

MAR 20 1977

**NOV 20 1979**





NORTH MAIN STREET HISTORIC DISTRICT

Bolivar, Hardeman County, Tennessee *DOE*

Photo By: George F. Fielder *MAR 20*

Date: November 1976

Neg. Tennessee Historical Commission  
Nashville, Tennessee

Fentress-Vincent House, "The Gardens" (No. 13)  
south and east elevations, facing northwest

#9 of 24

**NOV 20 1979**





BOLIVIA

NORTH MAIN STREET HISTORIC DISTRICT

Bolivar, Hardeman County, Tennessee

Photo By: George F. Fielder

*DOE*  
MAR 20 1980

Date: November 1976

Neg. Tennessee Historical Commission

Nashville, Tennessee

Pierce House (No. 14); west and south elevations, facing northeast

#10 of 24

NOV 20 1979







NORTH MAIN STREET HISTORIC DISTRICT

Bolivar, Hardeman County, Tennessee

Photo By: George F. Fielder

Date: November 1976

Neg. Tennessee Historical Commission  
Nashville, Tennessee

Left Sammons House (No. 15); west and south elevations, facing northeast, Right Cross House (No. 16); west and south elevations, facing northeast

#11 of 24

MARK  
DOE

NOV 20 1979





NORTH MAIN STREET HISTORIC DISTRICT

Bolivar, Hardeman County, Tennessee

Photo By: George F. Fielder

Date: November 1976

Neg. Tennessee Historical Commission

Nashville, Tennessee

Pierce House (No. 17); west and south  
elevations, facing northeast

#12 of 24

*MAF 29 1980*  
*DOE*

**NOV 20 1979**



BOLIVAR  
STR NO 20  
10 NOV 1970



NORTH MAIN STREET HISTORIC DISTRICT

Bolivar, Hardeman County, Tennessee

Photo By: George F. Fielder

Date: November 1976

Neg. Tennessee Historical Commission

NBC Nashville, Tennessee

Rogers House (No. 18); south and east elevations, facing northwest

#13 of 24 MAR 20 1980

DOE

NOV 20 1979



**BOLIVAR**  
STR NO 22



NORTH MAIN STREET HISTORIC DISTRICT

Bolivar, Hardeman County, Tennessee

Photo By: George F. Fielder

Date: November 1976

Neg. Tennessee Historical Commission  
Nashville, Tennessee

Wheeler House (No. 21); east and north  
elevations, facing southwest

#14 of 24

*DOE*

MAR 20 1980

NOV 20 1979





NORTH MAIN STREET HISTORIC DISTRICT

Bolivar, Hardeman County, Tennessee

Photo By: George F. Fielder

Date: November 1976

Neg. Tennessee Historical Commission  
Nashville, Tennessee

Left. Lockman-Brooks House (No. 22);  
north and west elevations, facing  
southeast

Center. Brooks House (No. 23); north and  
west elevations, facing southeast

Right. Bolivar-Hardeman County Library  
(No. 24); north and west (partial)  
elevations, facing southeast

#15 of 24

*DOE*

NOV 20 1976





NORTH-MAIN STREET HISTORIC DISTRICT

Bolivar, Hardeman County, Tennessee

Photo By: George F. Fielder

Date: November 1976

Neg. Tennessee Historical Commission  
Nashville, Tennessee

Bolivar-Hardeman County Library (No. 24);  
north (partial) and west elevations, facing  
southeast

#16 of 24

MAR 20 1980  
DOE

NOV 20 1979





NORTH MAIN STREET HISTORIC DISTRICT

Bolivar, Hardeman County, Tennessee

Photo By: George F. Fielder

Date: November 1976

Neg. Tennessee Historical Commission  
Nashville, Tennessee

Durrett House, "Greenberry Bright"

(No. 25); west and south elevations, facing

northeast

#17 of 24

MAR 20 1980  
DOE

NOV 20 1979



BOLIVAR  
DTR NO 63  
18 NOV 1978



NORTH MAIN STREET HISTORIC DISTRICT

Bolivar, Hardeman County, Tennessee

Photo By: George F. Fielder

Date: November 1976

Neg. Tennessee Historical Commission

Nashville, Tennessee

Ragon-Bradley House (No. 26) north and  
west elevations, facing southeast

#18 of 24

MAR 20 1980  
DOE

NOV 20 1976



**NORTH MAIN STREET HISTORIC DISTRICT**

**Bolivar, Hardeman County, Tennessee**

**Photo By: George F. Fielder**

**Date: November 1976**

**Neg. Tennessee Historical Commission  
Nashville, Tennessee**

**Avent House, "Magnolia Manor" (No. 28);  
west and south elevations, facing northeast**

**#19 of** MAR 20 1980

*DOE*

**NOV 20 1976**





BOLIVAR  
5TH NO. 60

NORTH MAIN STREET HISTORIC DISTRICT

Bolivar, Hardeman County, Tennessee

Photo By: George F. Fielder

Date: November 1976

Neg. Tennessee Historical Commission  
Nashville, Tennessee

Cox-Wiggs House (No. 31); north and west  
elevations, facing southeast

#20 of 24

MAR 20 1980  
DOE

NOV 20 1979





BOLIVAR  
STR NO 58



NORTH MAIN STREET HISTORIC DISTRICT

Bolivar, Hardeman County, Tennessee

Photo By: George F. Fielder

Date: November 1976

Neg: Tennessee Historical Commission

Nashville, Tennessee

Weems House (No. 32); north and west

elevations, facing southeast

#21 of 24

MAR 20 1980  
Doe

NOV 20 1976



BOLIVAR  
STR NO 57  
12 NOV 1978

**NORTH MAIN STREET HISTORIC DISTRICT**

**Bolivar, Hardeman County, Tennessee**

**Photo By: George F. Fielder**

**Date: November 1976**

**Neg. Tennessee Historical Commission  
Nashville, Tennessee**

**Stallings House (No. 33); west elevation,  
facing east**

**#22 of 24**

**MAR 20 1980**

**NOV 20 1976**

*DJE*





BOLIVAR HISTORIC DISTRICT (Area 1)  
NORTH MAIN STREET HISTORIC DISTRICT

Bolivar, Hardeman County, Tennessee

Photo By: George F. Fielder

Date: November 1976

Neg. Tennessee Historical Commission

Nashville, Tennessee

Prewitt House (No. 34); west elevation,  
facing east

*DJE*

#23 of 24  
MAR 20 1980

NOV 20 1976





BOLIVAR  
218 - 10-24  
1928



NORTH MAIN STREET HISTORIC DISTRICT

Bolivar, Hardeman County, Tennessee

Photo By: George F. Fielder

Date: November 1976

Neg: Tennessee Historical Commission  
Nashville, Tennessee

Dorris House (No. 36); west and south  
elevations, facing northeast

#24 of 24  
MAR 20 1980  
DOE

NOV 20 1979