

263



United States Department of the Interior  
National Park Service

National Register of Historic Places  
Registration Form

1. Name of Property

historic name Thomas C. Miller Public School

other names/site number \_\_\_\_\_

2. Location

street & number 2 Pennsylvania Avenue

not for publication

city or town Fairmont

vicinity

state West Virginia code WV county Marion code 049 zip code 26554

3. State/Federal Agency Certification

As the designated authority under the National Historic Preservation Act, as amended, I hereby certify that this  nomination   
request for determination of eligibility meets the documentation standards for registering properties in the National Register of Historic  
Places and meets the procedural and professional requirements set for in 36 CFR Part 60. In my opinion, the property  meets   
does not meet the National Register criteria. I recommend that this property be considered significant  
 nationally  statewide  locally. (See continuation sheet for additional comments.)

*Susan Pierce*  
Signature of certifying official/Title

Deputy State Historic Preservation Officer

3-19-2013  
Date

West Virginia State Historic Preservation Office

State or Federal agency and bureau

In my opinion, the property  meets  does not meet the National Register criteria. ( See Continuation sheet for additional  
comments.)

\_\_\_\_\_  
Signature of certifying official/Title

\_\_\_\_\_  
Date

\_\_\_\_\_  
State or Federal agency and bureau

4. National Park Service Certification

I hereby certify that the property is:

entered in the National Register.  
 See continuation sheet

determined eligible for the  
National Register.

See continuation sheet  
determined not eligible for the  
National Register.

removed from the National  
Register.

other, (explain): \_\_\_\_\_

*Edson H. Beall*  
Signature of the Keeper

Date of Action

5-8-13

**5. Classification**

Ownership of Property	Category of Property	Number of Resources within Property		
		Contributing	Noncontributing	
<input checked="" type="checkbox"/> private	<input checked="" type="checkbox"/> building(s)	1		buildings
<input type="checkbox"/> public-local	<input type="checkbox"/> district			sites
<input type="checkbox"/> public-State	<input type="checkbox"/> site	1		structures
<input type="checkbox"/> public-Federal	<input type="checkbox"/> structure			objects
	<input type="checkbox"/> object	2	0	Total

<b>Name of related multiple property listing</b>	<b>Number of Contributing resources previously listed in the National Register</b>
N/A	0

**6. Function or Use**

Historic Functions	Current Functions
EDUCATION/school	VACANT/NOT in USE

**7. Description**

Architectural Classification	Materials
Late 19 <sup>th</sup> and 20 <sup>th</sup> Century Revivals: Colonial Revival and Jacobethan	foundation    Brick
	walls        Brick
	roof         Synthetic/Rubber
	other        Stone, Brick, Concrete

**Narrative Description**  
 See Continuation Sheets

8. Statement of Significance

Applicable National Register Criteria

- A Property is associated with events that have made a significant contribution to the broad patterns of our history.
- B Property is associated with the lives of persons significant in our past.
- C Property embodies the distinctive characteristics of a type, period, or method of construction or represents the work of a master, or possesses high artistic values, or represents a significant and distinguishable entity whose components lack individual distinction.
- D Property has yielded, or is likely to yield, information important in prehistory or history.

Criteria Considerations

Property is:

- A owned by a religious institution or used for religious purposes.
- B. removed from its original location.
- C. birthplace or grave of a historical figure of outstanding importance.
- D a cemetery.
- E a reconstructed building, object, or structure.
- F a commemorative property
- G less than 50 years of age or achieved significance within the past 50 years.

Narrative Statement of Significance:

See Continuation sheets

9. Major Bibliographical References

Bibliography

Previous documentation on file (NPS):

- preliminary determination of individual listing (36 CFR 67) has been requested
- previously listed in the National Register
- Previously determined eligible by the National Register
- designated a National Historic Landmark
- recorded by Historic American Buildings Survey
- recorded by Historic American Engineering

Levels of Significance (local, state, national)

Local

Areas of Significance

Architecture

Period of Significance

1914; 1928

Significant Dates

1914; 1928

Significant Person

Cultural Affiliation

N/A

Architect/Builder

Packard, Frank L.

Ittner, William Butts

Primary location of additional data:

- State Historic Preservation Office
- Other State Agency
- Federal Agency
- Local Government
- University
- Other

Name of repository:

Record #

Thomas C. Miller Public School  
Name of Property

Marion County, West Virginia  
County and State

---

**10. Geographical Data**

---

Acreage of Property 2.2

**UTM References**

1 17 573787 4371408  
Zone Easting Northing

See continuation sheet

**Verbal Boundary Description**

See Continuation Sheets

**Boundary Justification**

See Continuation Sheets

---

**11. Form Prepared By**

---

name/title Jean Boger  
organization Michael Gioulis Historic Preservation Consultant, Inc. date October 2012  
street & number 614 Main Street telephone 304.765.5716  
city or town Sutton state WV zip code 26601

---

**Additional Documentation**

---

Submit the following items with the completed form:

**Continuation Sheets****Maps**

- A USGS map (7.5 or 15 minute series) indicating the property's location
- A Sketch map for historic districts and properties having large acreage or numerous resources.

**Photographs**

- Representative black and white photographs of the property.
- CD with electronic images if digital photographs.

**Floorplans** for individual listings**Additional items**

(Check with the SHPO or FPO for any additional items.)

---

**Paperwork Reduction Act Statement:** This information is being collected for applications to the National Register of Historic Places to nominate properties for listing or determine eligibility for listing, to list properties, and to amend existing listing. Response to this request is required to obtain a benefit in accordance with the National Historic Preservation Act, as amended (16 U.S.C. 470 *et seq.*)

**Estimated Burden Statement:** Public reporting burden for this form is estimated to average 18.1 hours per response including time for reviewing instructions, gathering and maintaining data, and completing and reviewing the form. Direct comments regarding this burden estimate or any aspect of this form to the Chief, Administrative Services Division, National Park Service, P. O. Box 37127, Washington, DC 20013-7127; and the Office of Management and Budget, Paperwork Reductions Projects (1024-0018), Washington, DC 20303.



**United States Department of the Interior**  
National Park Service

# National Register of Historic Places

## Continuation Sheet

Section number 7 Page 1

### Location and Setting

The Thomas C. Miller Public School is located at 2 Pennsylvania Avenue in Fairmont. The school is situated in a mostly residential neighborhood a short distance north of the Downtown Fairmont Historic District. The school, constructed 1914, faces northeast from an elevated lot above Pennsylvania Avenue. A 1928 annex extends from the northwest elevation of the building.

There is a paved parking lot on the south side of the school. From here, a paved drive extends along the rear of the building to another parking area located towards the north end of the school. A tall stone retaining wall lines the drive and a short retaining wall lines the sidewalk along Pennsylvania Avenue. The property originally included a terrace with low brick wall in the front of the building. Though the terrace is gone, concrete steps leading from Pennsylvania Avenue to the main entrance of the building are extant.

The property includes one contributing building, the school, and one contributing structure, the stone landscape elements, including the retaining walls and exterior stairs.

### Description

The original section of the Miller School is Colonial Revival in style with Jacobethan style detailing in the entrance surrounds. The building is a three-story brick building incorporating running, American, and English bond brickwork. It has a flat roof with a low parapet wall with metal coping. The floor plan is in the shape of an H with the auditorium and gymnasium projecting from the rear. A brick belt course separates the middle and upper stories and stone belt course separates the upper floor from the parapet. The main architectural feature of the "legs" of the H-plan are brick quoins. Throughout the building, windows are two-over-two, double-hung sash at the lowest level and four-over-four or six-over-six on the upper floors. They are set singularly, in pairs, and in sets of threes and fours and all have smooth stone sills. Window openings on the lowest level have arched, brick lintels. (Photo 2 and 3)

The main elevation (facing northeast) features a Jacobethan-style entrance situated between the lower and middle stories of a central projecting bay. The entrance includes an arched ashlar surround with quoins and paneled entablature engraved with THE THOMAS C./MILLER SCHOOL. The current double doors, as well as all of the building's doors, are replacements. A cartouche is centered at the top of the bay in the parapet. A window opening to the right of the entrance has been enclosed with brick. (Photo 1 and 3)

The southeast elevation is similar to the main façade. It has a projecting central bay with entrance. However, on this elevation, the entrance is situated at the lowest level and the door surround and cartouche are simpler than on the main façade. The rear (southwest elevation) of the main building is unadorned, except for the features already noted. The windows on the lowest level of this elevation have been enclosed with brick.

United States Department of the Interior  
National Park Service

## National Register of Historic Places Continuation Sheet

Section number 7 Page 2

The annex, including a connector, was constructed to the northwest of the original building in 1928. The annex is a three-story brick building with concrete foundation, laid in the Flemish garden wall (Sussex) bond. The third story features the distinctive Flemish diagonal bond. Like the original building, the annex windows are wood, vary in size and style, and all have smooth stone sills. They include four-over-four and six-over-six, double-hung sash windows set singularly, in pairs, and in sets of threes. Also like the original building, the annex includes a brick belt course above the second and third stories and brick quoins at the corners. (Photos 4-6)

The northeast (main) elevation of the annex connector includes a projecting entrance vestibule with stone surround and cartouche. A stone panel on the left (south) side of the double entrance doors reads MILLER/JUNIOR/HIGH/SCHOOL/AD 28/WM B ITTNER, FAIA/ARCHITECT. Ittner's signature on the stone panel is in bas relief. The northeast (side) elevation of the annex also has a projecting entrance bay, one bay wide, with steel double doors and a stone surround with quoins and a cartouche at the top. Directly above the entrance door is brick panel laid in the basket weave bond and paired semi-lunette windows with a stone lintel. Two sets of windows on the lowest level of this elevation have been partially enclosed. The rear of the annex has a one-story brick incinerator with tall stack. (Photo 7 and 8)

### *Interior*

The interior of both sections of the school are similar with both including a central corridor with classrooms on either side. Each corridor has plaster ceilings and walls. The original section has tongue-and-groove wood flooring and the annex corridor has terrazzo flooring and baseboard and is lined with metal lockers. The classrooms in both sections have plaster ceilings and walls, wood tongue and groove flooring and blackboards; some of the classrooms have had a drop ceiling installed. Cloakrooms in the classrooms have the same finishes as the classrooms. Much of the oak wood trim remains around the window and door openings as do picture rails and baseboards. There are also many wood built-ins for the office spaces, labs and library including a unique map board which has multiple surfaces that can be pulled up or down via a pulley system. (Photos 9, 10 and 17)

Radiators are extant throughout the building and harken back to the original steam heat. All original light fixtures have been replaced. Bathrooms are a mixture of old and new with plaster ceilings and walls and wood and terrazzo flooring. Some of the partition stalls are paneled wood and others are steel partitions. Door hardware is a stylized "S" handle of metal.

Stairways in the original section have concrete steps and glazed tile and plaster walls. The stairways in the annex and connector have plaster ceilings and walls, terrazzo steps with wood hand rails on one side and solid plaster balustrade with wide terrazzo rails on the other side with wide curvilinear lines. The connector includes a large staircase and a large display case on the middle floor. A bronze plaque attached to the wall opposite the display case reads: MILLER SCHOOL/ANNEX/BUILDING ERECTED/1928/BOARD OF

United States Department of the Interior  
National Park Service

## National Register of Historic Places Continuation Sheet

Section number 7 Page 3

---

EDUCATION/R.C. JONES PRESIDENT/MRS. W.S. MAYERS COMMISSIONER/R.T. CUNNINGHAM  
COMMISSIONER/MRS. GEORGE DEBOLT SECRETARY/SUPERINTENDENT/OTIS G.  
WILSON/ARCHITECT/WILLIAM B. ITTNER/PRESIDENT 1923-27/E.W. HOWARD. (Photo16)

An interesting design element in the 1928 annex are three water fountains with green tile backsplashes that run from a wainscot level at the top to the floor at the bottom. Inset into the green tile is a main tile panel with a motif, a different motif for each fountain. One is of water birds with cattails, one is a fish motif with underwater plants and the third is missing the inset panel. The entire backsplash is outlined with a darker green tile. (Photo 19)

The school's auditorium is situated on the middle and upper floors on the rear of the original building. It has a modern drop-ceiling, plaster walls, and wood tongue and groove flooring. The auditorium has a stage with an arched proscenium and balconies with pipe rails on the sides of the room. The gymnasium is directly below on the lowest level. It has flanking balconies at the same level as the first floor and a sunken gym floor. The gym has glazed tile walls, plaster ceiling with exposed steel beams and vinyl tile flooring. Basketball hoops are attached to the balcony pipe rails. The school's cafeteria and kitchen are located in the lowest level of the annex. (Photos 11, 12 and 18)

### *Stone walls*

A cut stone retaining wall with grapevine joints runs along Pennsylvania Avenue, separating the lot from the sidewalk. It is approximately three feet tall. The wall includes stone bollards that are situated at the driveway as well as each staircase. The property also includes a stone retaining wall at the rear of the school along a paved drive. It measures approximately 12 feet in height.

United States Department of the Interior  
National Park Service

## National Register of Historic Places Continuation Sheet

Section number 8 Page 4

### Statement of Significance

The Thomas C. Miller Public School is eligible for listing in the National Register at the local level under *Criterion C: Architecture* as an excellent local example of the architectural work of master architects, Frank L. Packard and William B. Ittner. It is also eligible for its architectural style, a vernacular combination of styles popular during the first decades of the twentieth century. The Period of Significance reflects the construction dates, 1914 and 1928.

### History

The construction of the original section of the Miller School in 1914 was prompted by Fairmont's population growth that occurred in the early twentieth century. From 1900 to 1910 Fairmont's population almost doubled, stimulating new construction of commercial buildings, residences, churches, and schools.

The Miller School was financed through a bond issue of approximately \$133,000. Once funding was secured, the Fairmont Independent School District purchased property from C.C. and Mary Penick in 1912.<sup>1</sup> The Board of Education then selected architect, Frank L. Packard of Columbus, Ohio for its design. Architect R.A. Gillis of Fairmont was hired as the supervising architect and George Abernathy of Columbus, Ohio was the successful low bidder for the construction of the school. J. A. Hilderbrand, also of Columbus, was the sole bidder for the plastering contract and the HVAC system was given to the Peck Hammond Company of Cincinnati, Ohio. The George M. Lilly Company was awarded the contract for the construction of the stone wall to the rear of the school and all cement walks and drives were designed by Packard.<sup>2</sup> As originally constructed, the school contained seventeen classrooms, a large gymnasium with locker rooms and shower baths, an auditorium that seated over 500, toilets on each floor, a library, teacher's offices, a principal's office, and storage spaces.

The Miller School was named after Thomas Condit Miller, a Fairmont educator who helped establish the first state board of education, pushed for compulsory attendance laws, and worked to improve the teaching profession through certification.<sup>3</sup> The school was located in the city's second ward, a working-class neighborhood just north of the downtown commercial area and one of the larger residential areas in Fairmont.<sup>4</sup> The new elementary school replaced an earlier school, Jackson Addition, that closed when the Miller School opened. The Jackson School proved to be too small and inadequate for the neighborhood's growing needs. At one time, the school served the second as well as third ward school children.

<sup>1</sup> Marion County Deed Book 184, pages 137 and 139.

<sup>2</sup> Private collection of Mark Bowyer, researcher, Fairmont, W.Va. Provided to the author October 2012.

<sup>3</sup> *Thomas Condit Miller of Fairmont, WV*. Grand Pocket's Blog. <http://chelledge.wordpress.com/elledge-conaway-genealogy/west-virginia-biographies/thomas-condit-miller/>. Accessed August 15, 2012. From *Men of West Virginia*, Vol 2 (Chicago: Biographical Publishing Co., 1903), 560.

<sup>4</sup> Sanborn Fire Insurance Maps, 1918-1950.

United States Department of the Interior  
National Park Service

## National Register of Historic Places Continuation Sheet

Section number 8 Page 5

Through the second and third decades of the twentieth centuries, Fairmont continued to grow. In 1910 the population was 9,711 and was over twenty-three thousand by the end of the 1920s. In 1928 the annex was constructed to serve the growing population. While the original section of the school continued to serve only elementary-aged students, the annex was as a junior high school. It remained a dual school until 1954 when desegregation was federally mandated and students from Dunbar School transferred to Miller School. It then became only a junior high school and served until 2008 when it closed.<sup>5</sup>

### Criterion C

The original section of the Thomas C. Miller Public School was designed by Frank L. Packard of Columbus, Ohio.<sup>6</sup> Packard was born in 1860 in Delaware, Ohio and received his education there. He served at the local architectural practice of F.A. Gartner and went on to receive additional training at the Ohio State University and Massachusetts Institute of Technology. After working in New York City, Packard returned to Ohio and began partnering with Joseph W. Yost in 1892 under the name of Yost & Packard. Packard is well known in Fairmont for his collaboration with Yost on their design of the Marion County Courthouse, an excellent West Virginia example of Beaux Arts architecture. Yost and Packard, who designed a number of buildings in the 1890s, worked extensively in West Virginia and Ohio.<sup>7</sup>

By 1900, however, Packard had established an independent practice designing many public and commercial buildings. Packard designed many buildings in Columbus as well as in West Virginia. Under President Harding's administration, he served as architect in charge for the design and construction of the U.S. Embassy Building at Rio de Janeiro, Brazil. Packard is known to have designed over 3400 buildings with 100 or more in Columbus, Ohio alone and several buildings on the campus of Ohio State University. Packard was an early member of the Fellow of the American Institute of Architects; past president of the Columbus, Ohio chapter; and one time president of the Columbus Chamber of Commerce as well as being involved in other civic duties.<sup>8</sup>

Prior to becoming an independent architect, Packard's designs were typical of the neoclassical architecture taught and promulgated by the Ecole des Beaux-Arts school in Paris. After 1900, Packard began experimenting with American and revival styles. Though the Miller School is not high-style architecture, it is a combination of the contemporary styles. Packard was very interested in the Arts and Crafts movement in the United States and some of the design elements of Miller School fit this trend as well as the revival styles

<sup>5</sup> Oral interview with author/researcher, Mark Bowyer, of Fairmont, W.Va. on October 3, 2012.

<sup>6</sup> Private collection of Mark Bowyer, researcher, Fairmont, W.Va.. Provided to the author October 2012.

<sup>7</sup> Withey, Henry F., AIA and Elsie Rathburn. *Biographical Dictionary of American Architects (Deceased)*. And, Anthony J. Lisska, *Frank Packard's Granville*. <http://www.granvillehistory.org/storage/historicaltimes/HistTimes200802.pdf> (accessed January 8, 2013).

<sup>8</sup> *Ibid.*

United States Department of the Interior  
National Park Service

## National Register of Historic Places Continuation Sheet

Section number 8 Page 6

of the American movement such as the coarse red brick facade, quoined entrance surround with label molding, and stone accents throughout the facade. The building is Colonial Revival style with Jacobethan style detailing in the entrance surrounds.

Packard was known for his innovative school designs and incorporated many into the 1914 Miller School design. Some include a heating and cooling system which distributed fresh air throughout the building, adjustable student seating, and extensive exterior landscaping to accommodate play areas for the students. After construction, school administrators from the Wood County Board of Education toured the new school to gather ideas and suggestions for their school building designs.<sup>9</sup> They were impressed and hired him to design Parkersburg High School a few years later (National Register listed in 1992). Though Packard designed several other buildings in West Virginia, such as the Clay County Courthouse, the Miller School and Parkersburg High School are currently the only two known schools of his design in West Virginia. The Jacobethan-style Charleston High School he designed in 1912 has been demolished.

The Marion County Board of Education continued its innovative construction and design with the architect they chose for the addition to the school in 1928. The 1928 annex design is attributed to William Butts Ittner, a St. Louis architect, known at the time as the Father of Modern School Architecture.<sup>10</sup> Ittner was born in 1864 in St. Louis, Missouri and educated at Washington University's Manual Training School and Cornell University. He worked in the offices of Eames & Young from 1889 to 1891, practiced briefly by himself, and later with William Foster and the firm of T.C. Link and Alfred Rosenheim. In 1897, Ittner was appointed Commissioner of School Buildings for St. Louis.<sup>11</sup>

When first appointed to this position, for the most part Ittner found that the current facilities and plans were not adequate to provide a quality education. For example, schools were not adequately lit, staircases were not safe, exits were scarce, and there was no indoor plumbing. He immediately began to draw new innovative school plans for schools that were fireproof, included an adequate heating and cooling system, and were well-lit. Ittner gave great thought to every dimension, arrangement, and material, including the grade of coal used in the boilers. Over the years he came up with a number of different floor plans to serve these needs including the H-Plan, Cruciform-Plan, U-Plan, and E-Plan.<sup>12</sup> Ittner's blend of beautiful designs with plan efficiency brought him country-wide recognition. He became a notable authority on the design and plan of school buildings with his work reviewed in respected journals such as *The Architectural Record* and *The Western Architect*. One such article declared that, "In this development of the modern school no architect

<sup>9</sup> *The Fairmont Times*. October 23, 1912.

<sup>10</sup> Katherine Jourdan and Carol Amos, *Fairmont Senior High School*, National Register of Historic Places nomination, 2002. Available at the West Virginia State Historic Preservation Office.

<sup>11</sup> Carolyn Hewes Toft, *William B. Ittner, FAIA (1864-1936)*, Landmarks Association of St. Louis, N.d. [http://www.landmarks-stl.org/architects/bio/william\\_b\\_ittner\\_faia\\_1864\\_1936/](http://www.landmarks-stl.org/architects/bio/william_b_ittner_faia_1864_1936/) (accessed January 8, 2013)

<sup>12</sup> Cynthia H. Longwisch, *St. Louis, Missouri, Public Schools of William B. Ittner*, National Register of Historic Places Multiple Property Documentation Form, 1992.

United States Department of the Interior  
National Park Service

## National Register of Historic Places Continuation Sheet

Section number 8 Page 7

has played a more prominent part than William B. Ittner...And so general has his judgment been accepted as authoritative that the Ittner plan has become the accepted standard throughout the country."<sup>13</sup>

The Miller School illustrates Ittner's innovative school architecture concepts by incorporating some of the above-mentioned principles into his design including classrooms tailored to specific needs and the incorporation of an abundance of natural light and fresh air into the classrooms through the large windows. The open and light design is illustrated in the stair lobby of the addition, where large and numerous windows provide an abundance of light.

Ittner also designed his schools with certain aesthetics in mind. Though some displayed more high style architecture than others, many displayed rarer forms of brick bonding, such as the Flemish Garden Wall bond of the Miller School, along with stonework accents around doors. Ittner's association with his father's company, Ittner Brick Company, is often credited as the source of the elaborate brickwork in his buildings.<sup>14</sup> The bonding patterns and details of the Miller School are excellent illustrations of the body of his work.

While the exterior of the addition complements the style of the original building, the interior is a departure from the Colonial Revival and Jacobethan styles. Staircases in the annex are representative of the then-modern Art Deco and/or Art Moderne style and the water fountain backsplashes, designed by now renowned Pewabic Pottery, are characteristic of the country's Arts and Crafts movement. Ittner skillfully incorporated these "newer" details into the traditional style of the original building, blending old and new designs.

In addition to Miller School, Ittner also designed three other schools in Fairmont, including Fairmont Senior High School (National Register listed in 2002), Dunbar High School, and an addition to Barnes Junior High School and Grade School. They were all completed in 1928. Of the four, the Colonial Revival Fairmont Senior High School is the most high-style and prominent, featuring a gabled roofline, tall chimneys, and rows of multi-light windows. Similarly, the addition to the Barnes School is high-style featuring a gable roof and other elements of the Colonial Revival style including dentils and oculus windows. Dunbar High School, an historically black school, is a more vernacular interpretation of the style with a flat roof and minimal detailing, although it does include a fanlight over the main entrance, a hallmark of the style. Unlike these three schools, which were all constructed with light-colored bricks, the Miller School was constructed in a dark red brick to complement the original building. Further, its Colonial Revival elements include the façade symmetry and large multi-light windows. Its primary features are the Jacobethan-style elements.

The Miller School is also eligible for its architecture as a significant local example of the blending of styles including Colonial Revival and Jacobethan on the exterior and including elements of the Arts and Crafts and Art Deco/Moderne styles on the interior.

<sup>13</sup>Gypsy Hill Place: Architecture. <http://www.gypsyhillplace.com/about/architecture/> (accessed 8 January 2012).

<sup>14</sup>Fairmont Senior High School, National Register of Historic Places nomination.

United States Department of the Interior  
National Park Service

## National Register of Historic Places Continuation Sheet

Section number 8 Page 8

---

The Jacobethan-style entrances on the main and side elevations are the most notable feature of the Miller School. The style emerged in the early decades of the twentieth century as a combination of the medieval Jocabean and Elizabethan styles. Some features of the style include masonry construction and smooth stone trim, both elements found in the Miller School. Colonial Revival elements include façade symmetry and multi-light, double-hung sash windows. The terrazzo floors and curved horizontal lines of the interior staircases of the addition represent the more modern Art Deco/Art Modern style.

Though the overall architectural style of the Miller School is restrained and not high style compared to others, such as the Colonial Revival Fairmont Senior High School or the Jacobethan Parkersburg High School, the architecture is significant regardless. The historic architectural integrity is excellent with very few alterations. This, combined with the various architectural details, including Ittner's brickwork (Flemish Garden Wall and Flemish diagonal bond), the Arts and Crafts backsplashes, Art Moderne staircases and lobby, and Jacobethan entrances, combine to create one of Fairmont's architectural jewels.

### Summary

The Miller School is significant as a combination of the work of two master architects of school buildings, Frank L. Packard and William B. Ittner. Though the original section and the addition are not the most high style examples of their works, the Miller School is locally significant nonetheless as a combination Packard-Ittner designed building. It is also eligible for unique blend of architectural styles, although restrained in character. The school retains its architectural integrity including historic materials and fabric, original windows, location, design, workmanship, feeling, and association. The building is located in its original setting as a former educational facility in a residential neighborhood.



United States Department of the Interior  
National Park Service

## National Register of Historic Places Continuation Sheet

Section number 9 Page 9

---

### Bibliography: works cited/referenced

- A History of Marion County West Virginia, 1985.* Fairmont, W.Va.: Marion County Historical Society, Inc., 1985.
- Bowyer, Mark. Oral interview with the author on October 3, 2012.
- Bowyer, Mark (author/researcher). Private collection. Fairmont, W.Va. Materials provided to the author October 2012.
- "Contractor Abernathy Begins Construction of Second Ward School," *The Fairmont Times*. 23 October 1912.
- Fleming, Allison Sweeney. *Memories of Fairmont, West Virginia*. Unpublished manuscript. February 28, 1950.
- Gypsy Hill Place: Architecture. <http://www.gypsyhillplace.com/about/architecture/> (accessed 8 January 2012).
- Harris, John T. *Official Register Division of the West Virginia Legislative Hand Book and Manual 1921*. Charleston, W.Va.: Tribune Printing Company.
- Jourdan, Katherine and Carol Amos. *Fairmont Senior High School National Register of Historic Places Form*. Unpublished manuscript, 2002. Available at the West Virginia State Historic Preservation Office, Charleston, W.Va.
- Lisska, Anthony J. *Frank Packard's Granville*. <http://www.granvillehistory.org/storage/historicaltimes/HistTimes200802.pdf> (accessed January 8, 2013).
- Lively, Charles. *West Virginia Legislative Hand Book and Manual and Official Register (Blue Book)*. Charleston, W.Va.: Jarrett Printing Company, 1933.
- Longwisch, Cynthia H., *St. Louis, Missouri, Public Schools of William B. Ittner*, National Register of Historic Places Multiple Property Documentation Form, 1992.
- Lough, Glenn D. *Now and Long Ago: A History of the Marion County Area*. Fairmont, W.Va.: Marion County Historical Society, 1969.
- Marion County Centennial Yearbook 1863-1963*. Fairmont, W.Va.: Marion County Centennial Committee,

United States Department of the Interior  
National Park Service

## National Register of Historic Places Continuation Sheet

Section number 9 Page 10

1963.

McCormick, Virginia Evans. *Educational Architecture in Ohio: From One-room Schools and Carnegie Libraries to Community Education Villages*. Kent, OH: Kent State University Press, 2001.

McMillan, Debra Ball. *An Ornament to the City Historic Architecture in Downtown, Fairmont, West Virginia*. Terra Alta, W.Va.: Headline Books, Inc., 1996.

*Men of West Virginia*, Vol 2. Chicago: Biographical Publishing Co., 1903.

*Miller Junior High School Yearbook*. 1974/1975.

Miller, Thomas Condit and Hu Maxwell. *West Virginia and Its People*. New York: Lewis Historical Publishing Company, 1913.

Physical Plant and Buildings Records, Marion County, West Virginia Board of Education, Fairmont, W.Va.

*Polk's Fairmont City Directory*. Pittsburgh: R.L. Polk & Co., 1927, 1931, and 1941.

Sanborn Fire Insurance Maps, Fairmont, W.Va., 1918, 1927, and 1927-1950.

*Thomas Condit Miller of Fairmont, WV*. Grand Pocket's Blog. <http://chelledge.wordpress.com/elledge-conaway-genealogy/west-virginia-biographies/thomas-condit-miller/>. Accessed August 15, 2012.

Toft, Carolyn Hewes, *William B. Ittner, FAIA (1864-1936)*, Landmarks Association of St. Louis, N.d.

*William B. Ittner*. Wikipedia. [http://en.wikipedia.org/wiki/William\\_B.\\_Ittner](http://en.wikipedia.org/wiki/William_B._Ittner). Accessed July 9, 2012.

Withey, AIA, Henry F. and Elsie Rathburn. *Biographical Dictionary of American Architects (Deceased)*. Los Angeles: Hennessey & Ingalls, Inc., 1970. Reprint, Detroit: Omnigraphics, 1996.

United States Department of the Interior  
National Park Service

# National Register of Historic Places Continuation Sheet

Section number 10 Page 11

---

## VERBAL BOUNDARY DESCRIPTION

The property is a rectangular lot that extends east-west from the junction of Spring Street and Pennsylvania Avenue and north-south from Maple Avenue on the south to Bennett Street on the north.

The boundary encompasses the school only and coincides with the school's legal boundaries in its entirety. The deed is recorded in the Marion County Courthouse, Fairmont, West Virginia and it is Deed Book 184, page 137.

## BOUNDARY JUSTIFICATION

The boundary follows the property line of the original plot of land deeded for use as a school. The school is encompassed within the boundary.

United States Department of the Interior  
National Park Service

## National Register of Historic Places Continuation Sheet

Section number 10 Page 12

---

Name of Property: Thomas C. Miller Public School

City or Vicinity: Fairmont

County: Marion

State: West Virginia

Photographer: Michael Gioulis/Jean Boger

Date Photographed: Summer/Fall of 2012

Description of Photograph(s) and number:

- 1 of 20 Front entrance bay detail, looking southwest
- 2 of 20 Front facade, north side, looking northwest
- 3 of 20 Southeast, end, facade, looking northwest
- 4 of 20 Northwest, end, facade, looking southeast
- 5 of 20 Rear, west, facade of annex addition, looking northeast
- 6 of 20 Rear, west, facade of original portion, looking southeast
- 7 of 20 Annex addition front entrance detail, looking southwest
- 8 of 20 Annex addition front entrance plaque detail, looking southwest
- 9 of 20 Classroom example in the original portion, c. 1914, of the school, looking west
- 10 of 20 Classroom example in the original portion, c. 1914, of the school, looking east
- 11 of 20 Auditorium, looking northeast
- 12 of 20 Auditorium showing one of the two balconies, looking east
- 13 of 20 Original corridor of the original portion, c. 1914, of the school, looking northwest

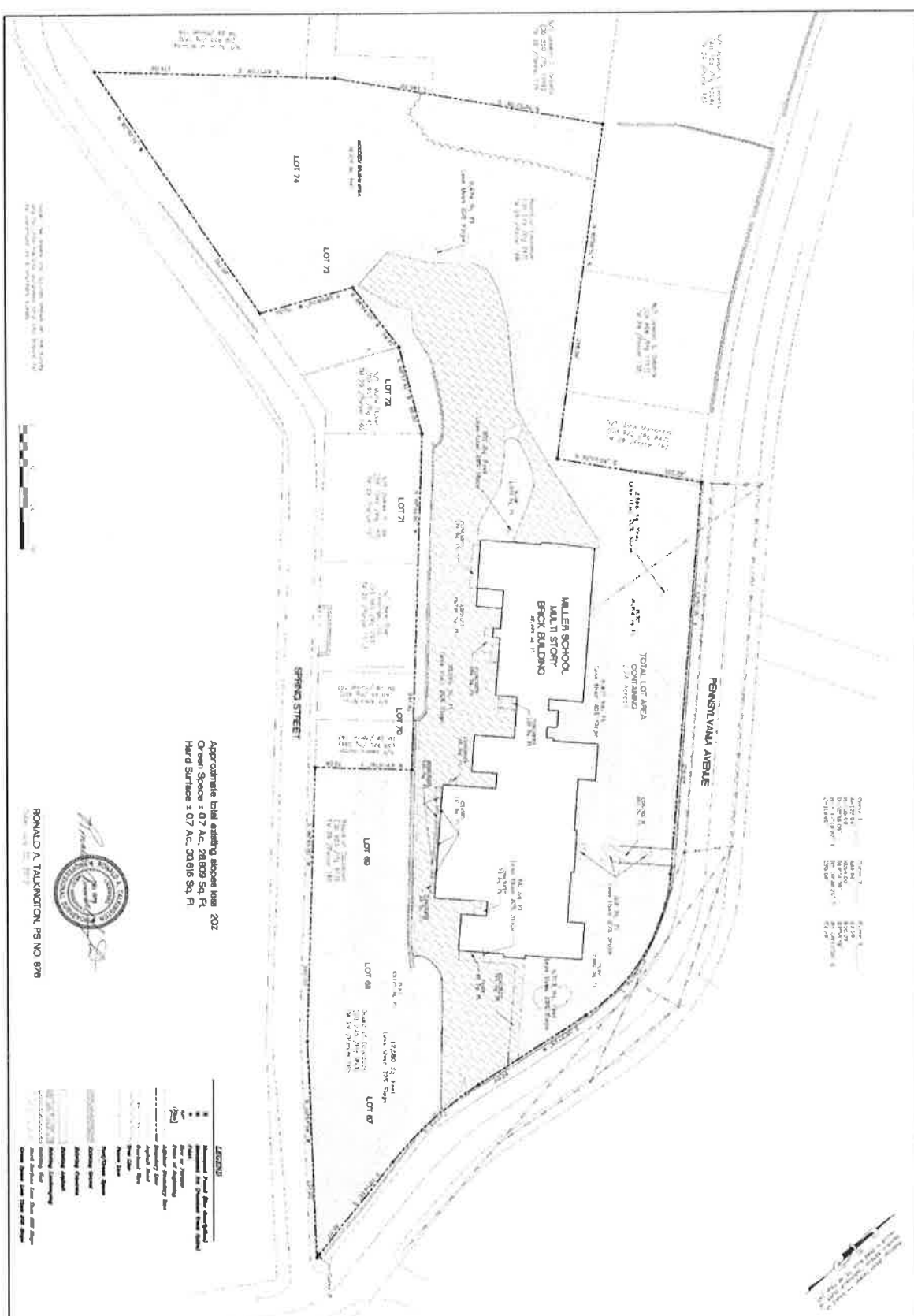
United States Department of the Interior  
National Park Service

## National Register of Historic Places Continuation Sheet

Section number 10 Page 13

---

- 14 of 20 Example of original staircase of the original portion, c. 1914, of the school, looking northeast
- 15 of 20 Example of annex addition corridor showing lockers, looking northwest
- 16 of 20 First floor annex addition staircase and lobby, looking west
- 17 of 20 Classroom in annex addition showing built-in map display board
- 18 of 20 Gym detail, looking north
- 19 of 20 Annex addition water fountain backsplash detail
- 20 of 20 Annex addition cafeteria detail, looking south



Approximate total existing square feet 202  
 Green Space : 07 Ac. 28,809 Sq. Ft.  
 Hard Surface : 07 Ac. 30,616 Sq. Ft.



RONALD A. TALKINGTON, P.E. NO. 8798

**LEGEND**

---	Proposed Lot Boundary
---	Proposed Building Footprint
---	Proposed Parking Area
---	Proposed Driveway
---	Proposed Easement
---	Proposed Utility Line
---	Proposed Right-of-Way
---	Proposed Access Road
---	Proposed Storm Drain
---	Proposed Sewer Line
---	Proposed Water Line
---	Proposed Gas Line
---	Proposed Telephone Line
---	Proposed Cable TV Line
---	Proposed Electric Line
---	Proposed Gas Line
---	Proposed Telephone Line
---	Proposed Cable TV Line
---	Proposed Electric Line

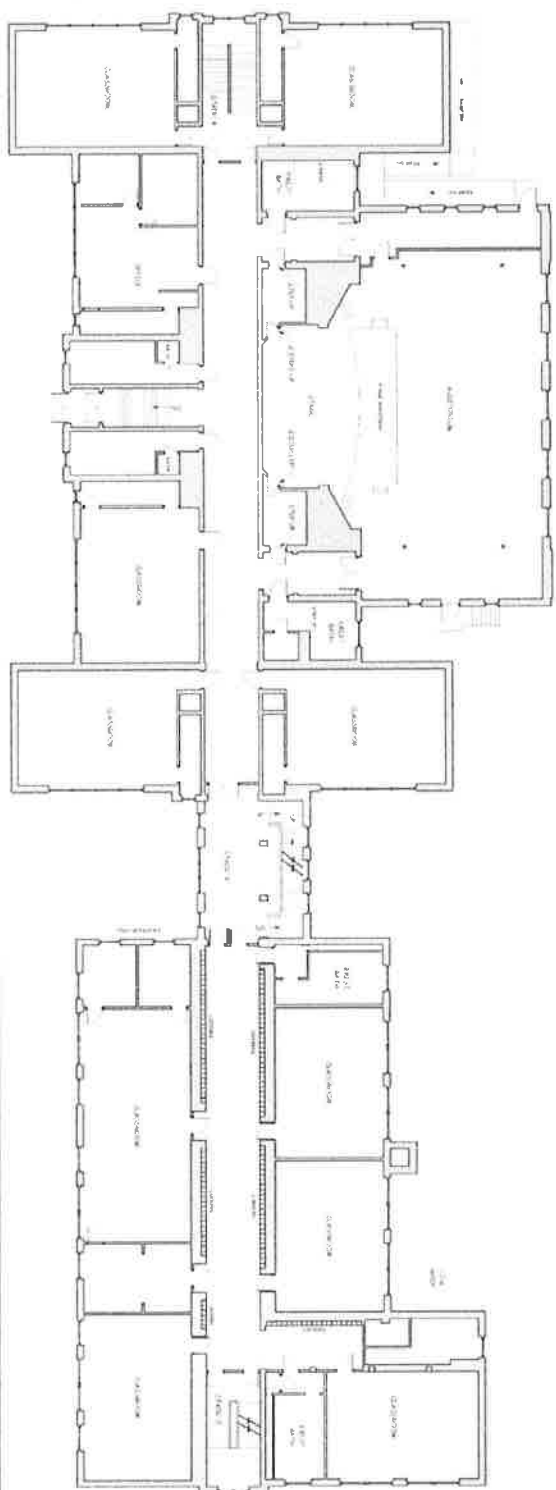
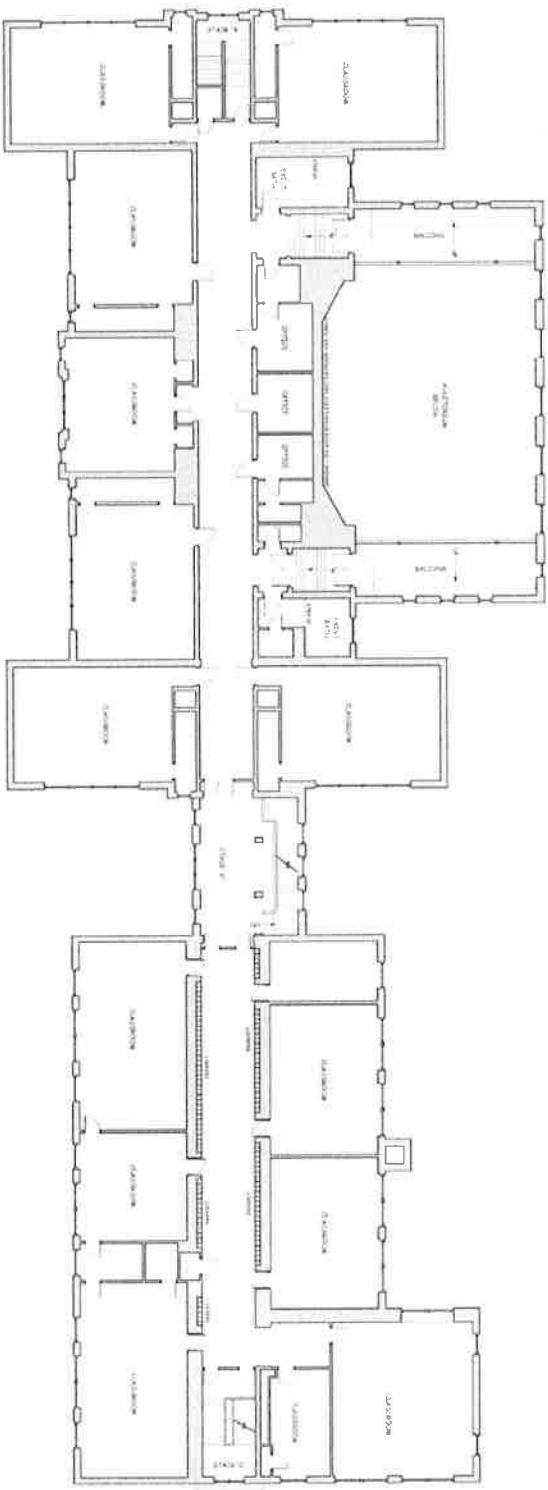
**TRIAD**  
 ENGINEERING, INC.  
 210 HARTMAN RUN ROAD  
 MORGANTOWN, WV 26506  
 PH. 304.298.2545 FAX. 304.298.8759

BOARD OF EDUCATION OF  
 MARION COUNTY  
 CITY OF FAIRMONT, FAIRMONT DISTRICT  
 TAX MAP 29, PARCELS 164, 165 AND 166  
 MARION COUNTY, WEST VIRGINIA  
 PLANIMETRIC SURVEY

CADD FILE	DATE	SCALE
87'S PLAN 164-166	08/28/13	1" = 30'
DRAWN BY	CHECKED BY	
DWA	RAT	

DATE	SCALE
08/28/13	1" = 30'

**TRIAD ENGINEERING, INC.**  
 210 HARTMAN RUN ROAD  
 MORGANTOWN, WV 26506  
 PH. 304.298.2545 FAX. 304.298.8759  
 OFFICE LOCATIONS  
 MARYLAND • PENNSYLVANIA • VIRGINIA  
 WEST VIRGINIA • OHIO



EXISTING PLANS FOR  
**THE THOMAS C  
MILLER SCHOOL**

FAIRMONT, MD



ARIC MARGOLIS ARCHITECTURE PLLC  
407 WILSON ST E  
Smyrna, MD 21158  
Phone: 410-343-7080  
www.aricmargolis.com

Task Name	Completion
Site Work	Not Started
Foundation	Not Started
Framing	Not Started
Roofing	Not Started
Interior	Not Started
Exterior	Not Started
Final Construction	Not Started

SCALE: 1/8" = 1'-0"

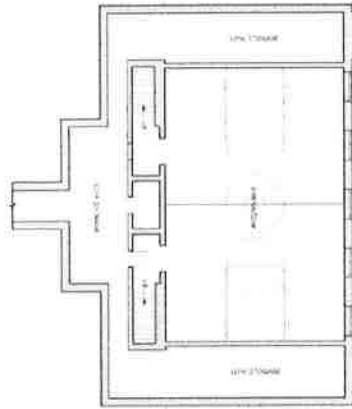
DATE: 10/27/21 10:00 AM

AS-BUILT  
NOT FOR  
CONSTRUCTION

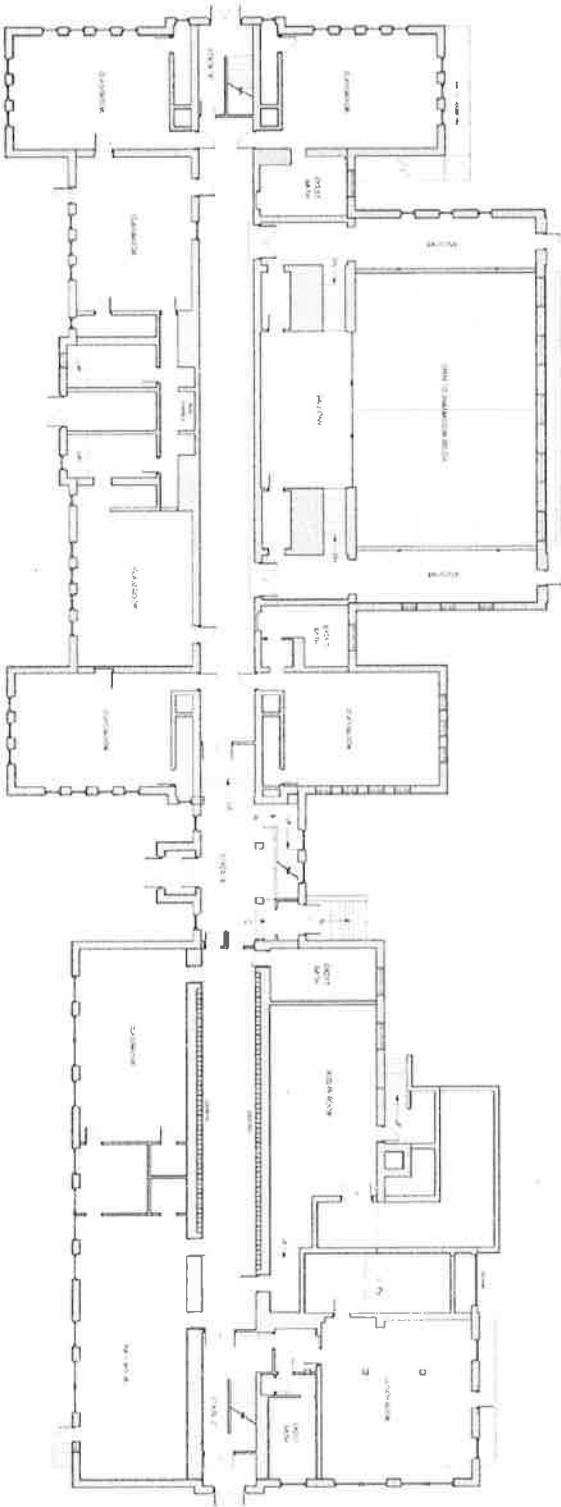
1.2

1ST & 2ND  
FLOOR  
PLANS

DRW:JAC



1 LOWER LEVEL PLAN



2 SECOND FLOOR PLAN

EXISTING PLANS FOR

# THE THOMAS C MILLER SCHOOL

FAIRMONT,

WEST VIRGINIA



APRIL MARGOLIS ARCHITECTURE  
 APRIL MARGOLIS ARCHITECTURE  
 PLLC  
 662 VISIONS EAST  
 SUITE 102  
 CHARLOTTE, WV 25310  
 304.343.5500  
 APRILMARGOLISARCHITECTURE.COM

Room No.	Room Name	Area	Notes

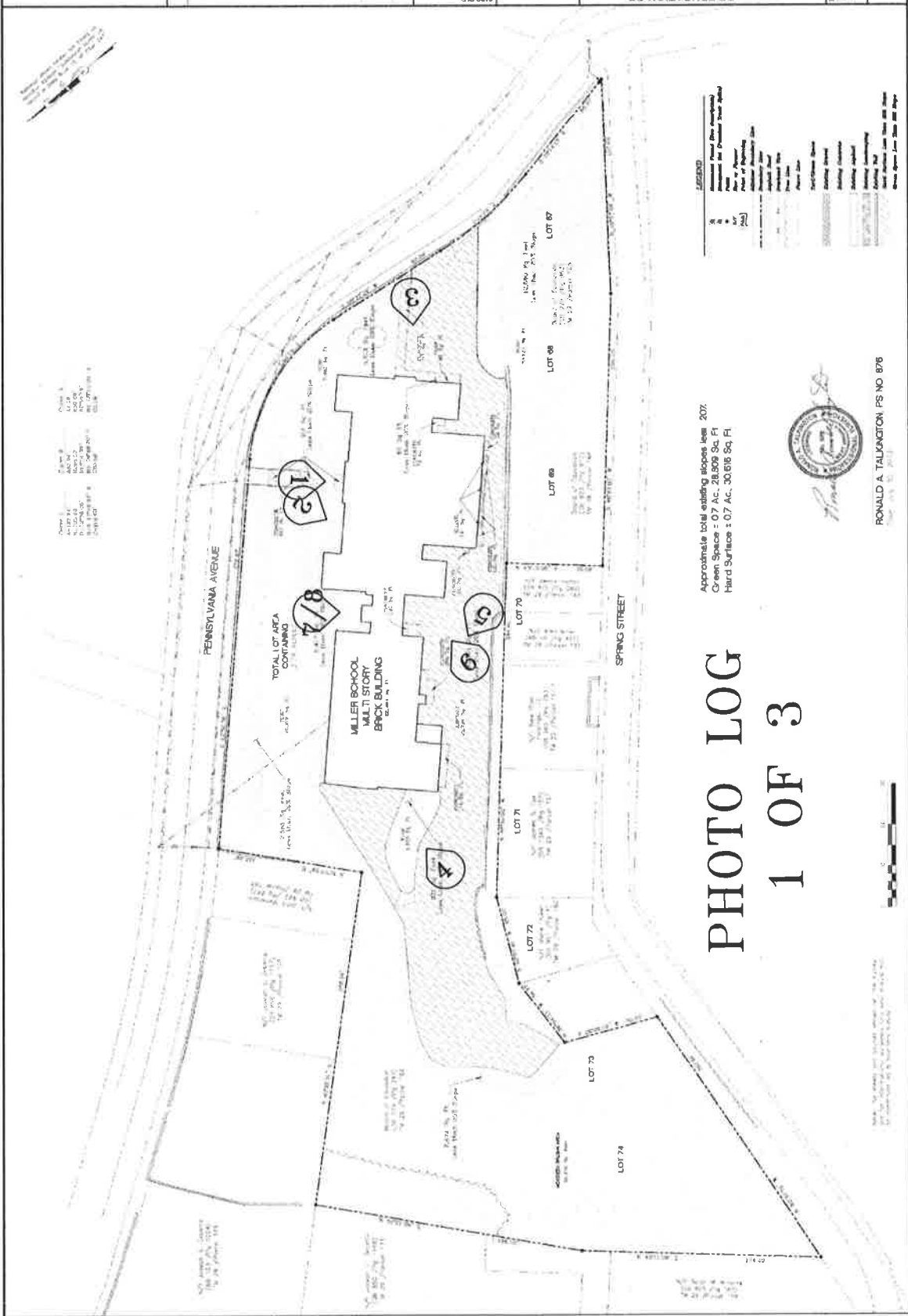
SCALE  
 AS-BUILT  
 NOT FOR  
 CONSTRUCTION  
 11/27/12 10:00 AM

DATE PLOT  
 11/27/12

GROUND & LOWER FLOOR PLANS  
 11/27/12  
 11/27/12



<b>BOARD OF EDUCATION OF MARION COUNTY</b> CITY OF FALMOUTH, FALMOUTH DISTRICT MARION COUNTY, WEST VIRGINIA PLANIMETRIC SURVEY		SHEET NUMBER: <b>C-01</b> TOTAL SHEETS: 01
CAD FILE: BR.FALMOUTH	DRAWN BY: TRAD	DATE: 7/19
SCALE: 1" = 50'	CHECKED BY: TRAD	DATE: 7/19
TRAD ENGINEERING, INC. 218 MARTIN LUTHER KING JR. ROAD MONROEVILLE, WV 25005 PH: 304.298.2882 FAX: 304.298.8758 WWW.TRADENGINEERING.COM		

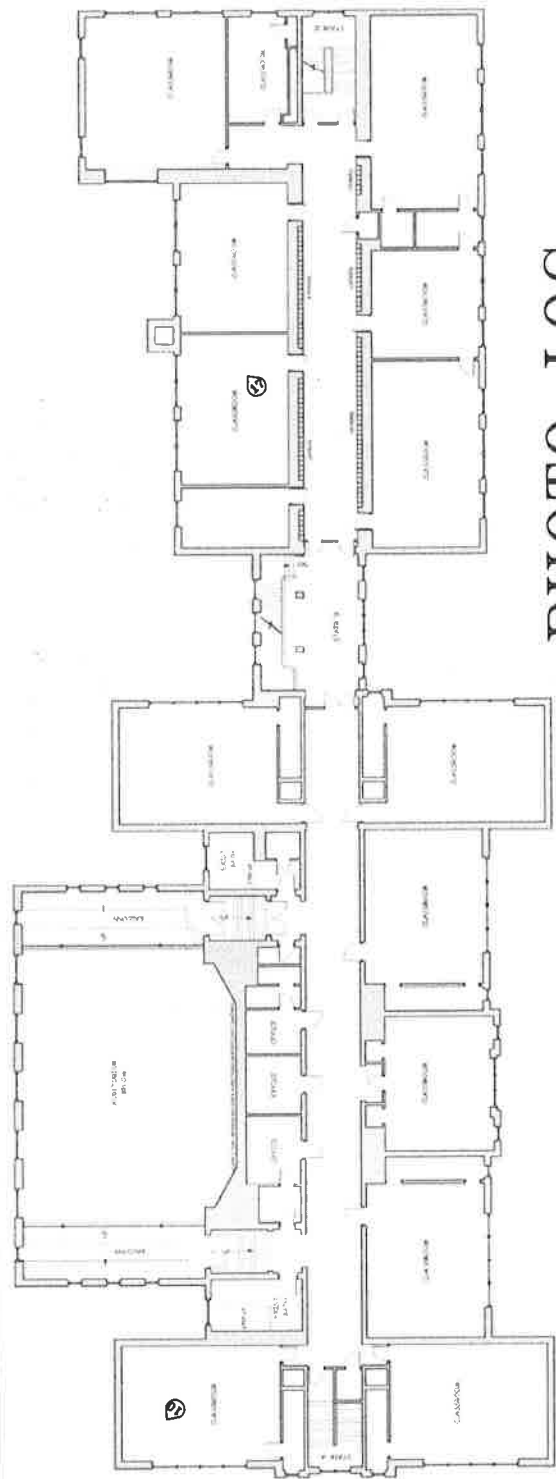


Room No.	Room Name	Area (Sq Ft)	Notes

SCALE  
 AS-BUILT  
 NOT FOR  
 CONSTRUCTION  
 11/27/12 10:36 AM

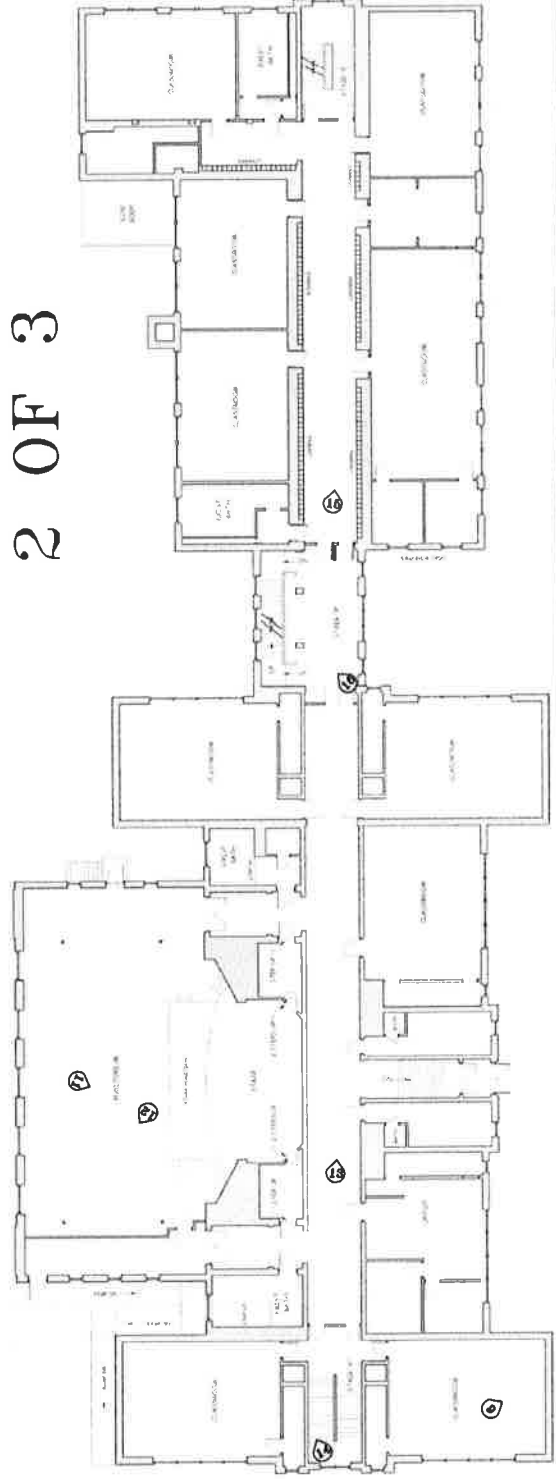
IMPORTANT  
 DRAWINGS MAY BE REPRODUCED OR TRANSMITTED IN ANY FORM OR BY ANY MEANS, WITHOUT PERMISSION IN WRITING FROM ARIC MARGOLIS ARCHITECTURE PLLC.

TITLE  
**1ST & 2ND FLOOR PLANS**  
 DRAWING  
**A1.2**



2ND FLOOR PLAN  
 SCALE 1/8"=1'-0"

**PHOTO LOG**  
**2 OF 3**



1ST FLOOR PLAN  
 SCALE 1/8"=1'-0"



ARIC MARGOLIS ARCHITECTURE PLLC  
 305 CHERRY ST E  
 CHESTER, NY 12314  
 PHONE: 518.347.9002  
 FAX: 518.347.9003  
 WWW: ARICMARGOLISARCHITECTURE.COM

THE THOMAS C MILLER SCHOOL  
 WEST VIRGINIA

FAYMONT

NO.	DESCRIPTION	DATE

AS-BUILT  
 NOT FOR  
 CONSTRUCTION  
 11/27/15 10:00 AM

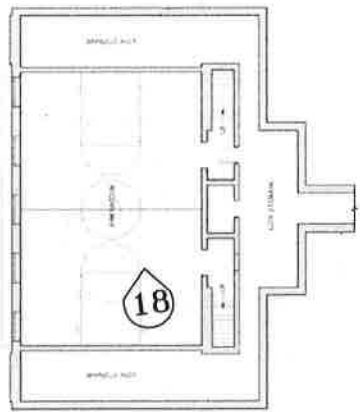


30 FEET  
 1" = 30'-0"

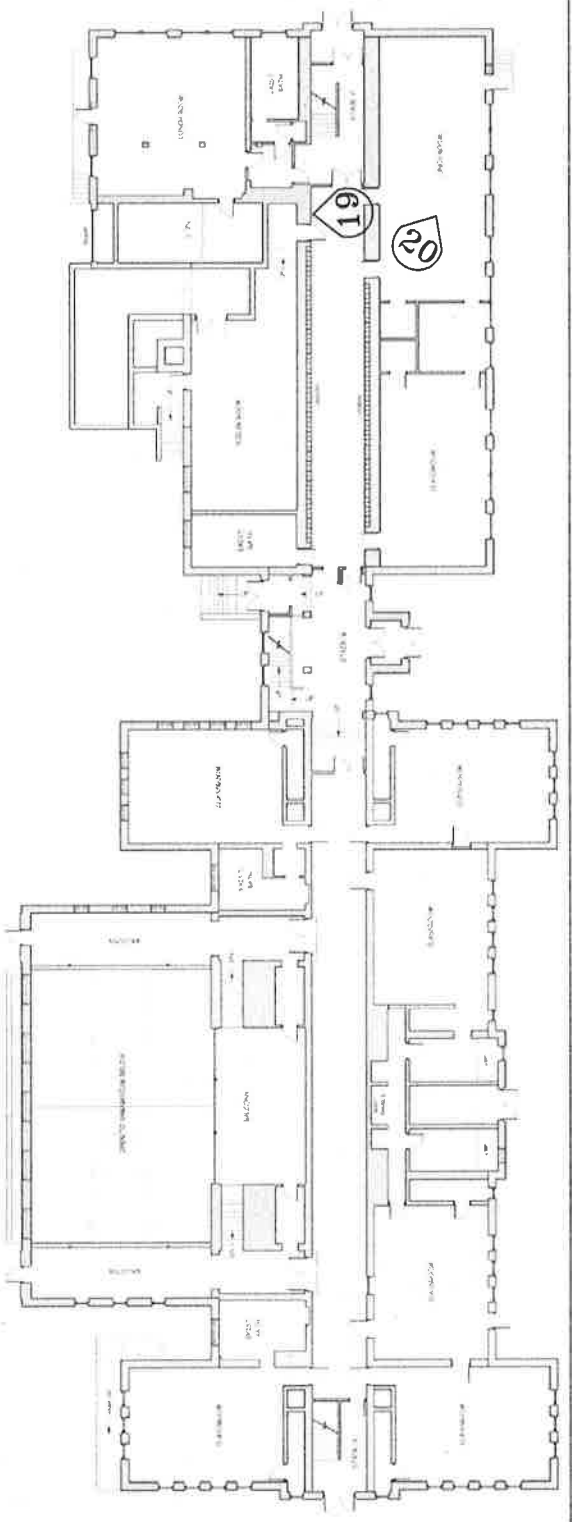
GROUND &  
 LOWER  
 FLOOR PLANS

AA.1.1

PHOTO LOG  
 3 OF 3

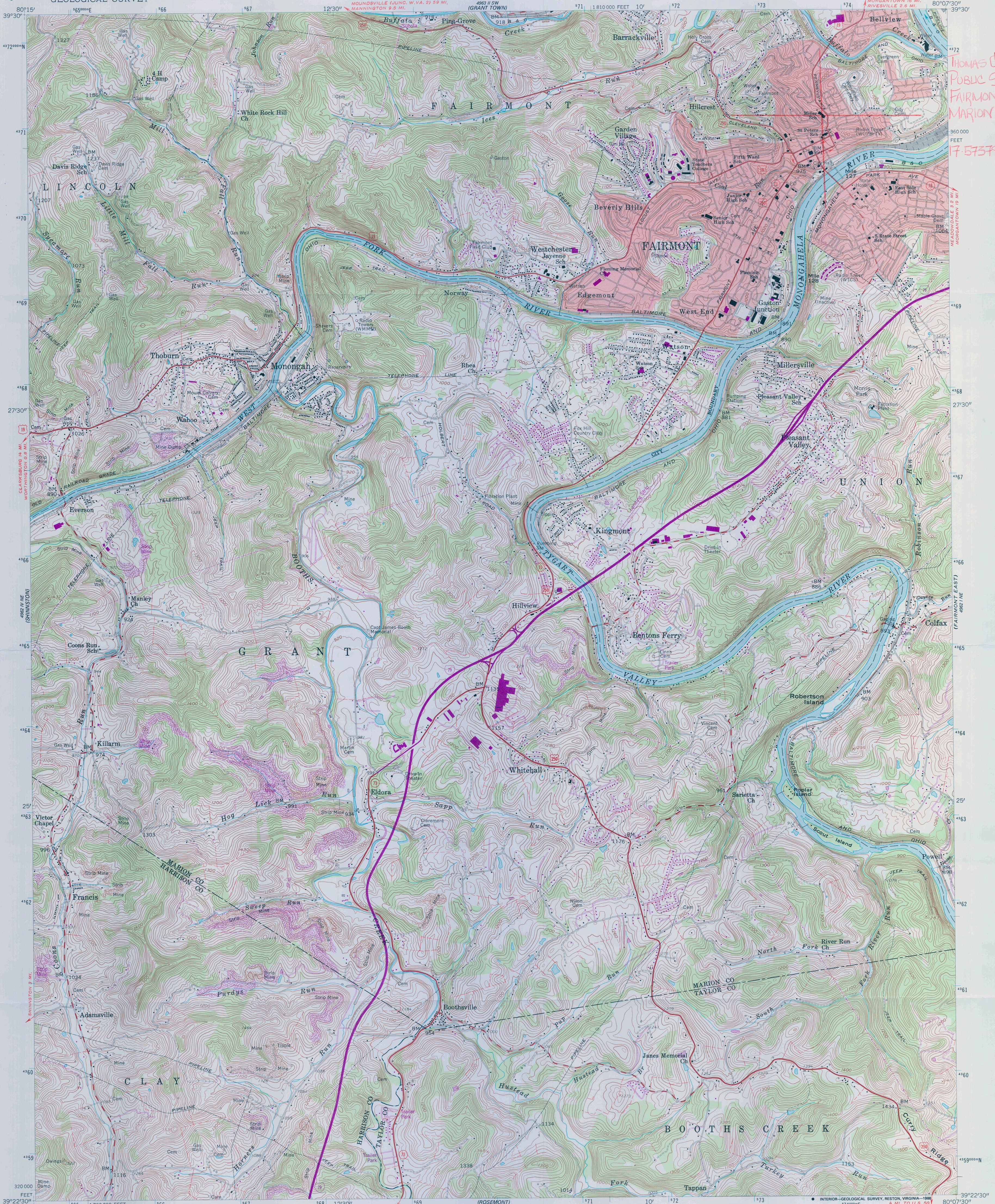


1 LOWER LEVEL PLAN  
 SCALE: 1/8" = 1'-0"



2 GROUND FLOOR PLAN  
 SCALE: 1/8" = 1'-0"

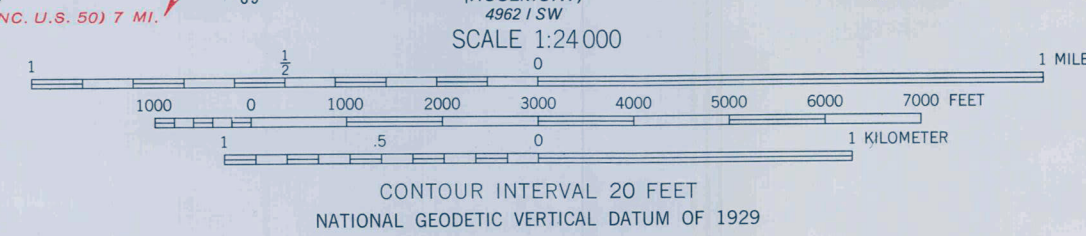
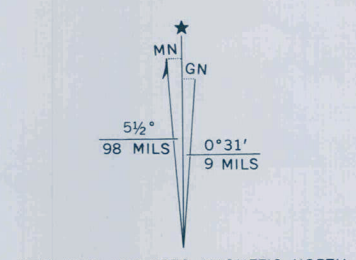




THOMAS C. MILLER  
PUBLIC SCHOOL  
FAIRMONT  
MARION COUNTY, WV  
360 000  
FEET  
17-573787-4371408

Mapped, edited, and published by the Geological Survey  
Control by USGS and USC&GS  
Topography from aerial photographs by photogrammetric methods  
Aerial photographs taken 1955. Field check 1958  
Polyconic projection. 1927 North American datum  
10,000-foot grid based on West Virginia coordinate system,  
north zone  
1000-meter Universal Transverse Mercator grid ticks,  
zone 17, shown in blue  
Fine red dashed lines indicate selected fence and field lines  
visible on aerial photographs. This information is unchecked  
Red tint indicates areas in which only  
landmark buildings are shown  
Unlabeled wells are oil wells  
Unchecked elevations are shown in brown

To place on the predicted North American Datum 1983,  
move the projection lines 6 meters south and  
18 meters west as shown by dashed corner ticks



THIS MAP COMPLIES WITH NATIONAL MAP ACCURACY STANDARDS  
FOR SALE BY U.S. GEOLOGICAL SURVEY  
DENVER, COLORADO 80225, OR RESTON, VIRGINIA 22092  
A FOLDER DESCRIBING TOPOGRAPHIC MAPS AND SYMBOLS IS AVAILABLE ON REQUEST

Revisions shown in purple compiled from aerial photographs  
taken 1976. This information not field checked

ROAD CLASSIFICATION

Heavy-duty	Light-duty
Medium-duty	Unimproved dirt

   U.S. Route       Interstate Route  
   U.S. Route       Interstate Route

FAIRMONT WEST, W. VA.  
NW/4 FAIRMONT 15' QUADRANGLE  
39080-D2-TF-024  
1958  
PHOTOREVISED 1976  
DMA 4962 1 NW-SERIES V854







THE THOMAS C.  
MILLER SCHOOL





















MILLER  
JUNIOR  
HIGH  
SCHOOL  
BLD 28  
Dedicated 1911

MULLER  
JUNIOR  
HIGH  
SCHOOL

AD 1928

*W. L. Miller, F. L. C.  
Architect*

























Whiteboard with handwritten notes:

Left side:  
... ..  
... ..  
... ..

Right side:  
... ..  
... ..  
how to  
request  
census

The whiteboard is mounted on a wall and is divided into two sections by a vertical line. The left section contains several lines of faint, illegible handwriting. The right section contains the words "how to", "request", and "census" written in a cursive hand. Below the whiteboard, the wall is covered in numerous pieces of torn, yellowed paper, suggesting a collage or a collection of discarded notes.







Science

ENUSEC





UNITED STATES DEPARTMENT OF THE INTERIOR  
NATIONAL PARK SERVICE

NATIONAL REGISTER OF HISTORIC PLACES  
EVALUATION/RETURN SHEET

REQUESTED ACTION: NOMINATION

PROPERTY NAME: Miller, Thomas C., Public School

MULTIPLE NAME:

STATE & COUNTY: WEST VIRGINIA, Marion

DATE RECEIVED: 3/22/13                      DATE OF PENDING LIST: 4/15/13  
DATE OF 16TH DAY: 4/30/13                      DATE OF 45TH DAY: 5/08/13  
DATE OF WEEKLY LIST:

REFERENCE NUMBER: 13000263

REASONS FOR REVIEW:

APPEAL: N    DATA PROBLEM: N    LANDSCAPE: N    LESS THAN 50 YEARS: N  
OTHER: N    PDIL: N    PERIOD: N    PROGRAM UNAPPROVED: N  
REQUEST: N    SAMPLE: N    SLR DRAFT: N    NATIONAL: N

COMMENT WAIVER: N

ACCEPT     RETURN     REJECT    5-8-13 DATE

ABSTRACT/SUMMARY COMMENTS:

**Entered in  
The National Register  
of  
Historic Places**

RECOM./CRITERIA \_\_\_\_\_

REVIEWER \_\_\_\_\_ DISCIPLINE \_\_\_\_\_

TELEPHONE \_\_\_\_\_ DATE \_\_\_\_\_

DOCUMENTATION see attached comments Y/N see attached SLR Y/N

If a nomination is returned to the nominating authority, the nomination is no longer under consideration by the NPS.



**The Culture Center**  
1900 Kanawha Blvd., E.  
Charleston, WV 25305-0300



**Randall Reid-Smith, Commissioner**

Phone 304.558.0220 • www.wvculture.org

Fax 304.558.2779 • TDD 304.558.3562

EEO/AA Employer

March 20, 2013

Ms. Carol Shull, Keeper  
National Register of Historic Places  
National Park Service 2280  
National Register of Historic Places  
1201 "I" (eye) Street, NW  
Washington D.C. 20005

Dear Ms. Shull:

We are submitting for your review the following three National Register registration forms:

- Thomas C. Miller Public School, Marion County
- Morris Memorial Hospital for Crippled Children, Cabell County
- Brookside Historic District, Preston County

The enclosed nominations have been approved by the State Archives and History Commission and processed in accordance with 36 CFR Part 60.

Also enclosed, please find additional documentation for the following two National Register-listed properties, both of which are located within the abovementioned proposed Brookside Historic District:

- Gaymont (92000351), additional documentation, Preston County
- Red Horse Tavern (73001923), additional documentation, Preston County

Please do not hesitate to contact us should you have questions. We can be reached at 304.558.0240.

Sincerely,

Susan M. Pierce  
Deputy State Historic Preservation Officer

*enclosures*