



TIME-SOVER SERVICE

1. B & O RAILROAD STATION  
(Salem Historic District)
2. Salem, West Virginia
3. Paul D. Marshall
4. June 1980
5. Paul D. Marshall & Associates, Inc.
6. South Elevation
7. Photograph #1/15

*Harrison Co.*

DEC 2 1980

OCT 28 1980



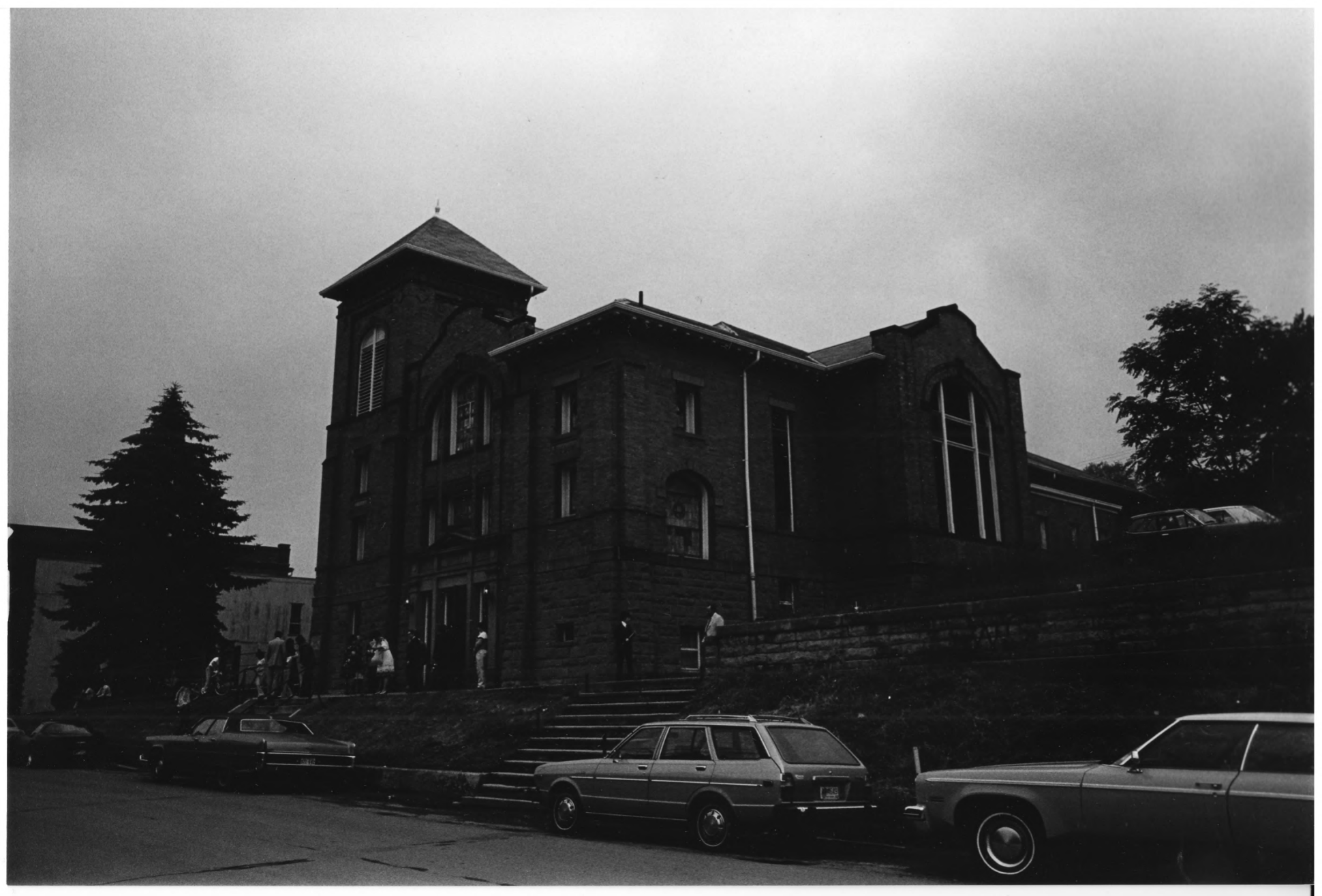


1. COZY CORNER  
(Salem Historic District)
  2. Salem, West Virginia
  3. Jill Ziegler
  4. June 1980
  5. Paul D. Marshall & Associates, Inc.
  6. Northeast view
  7. Photograph # 2/15
- Harrison Co.*

DEC 2 1980

OCT 28 1980



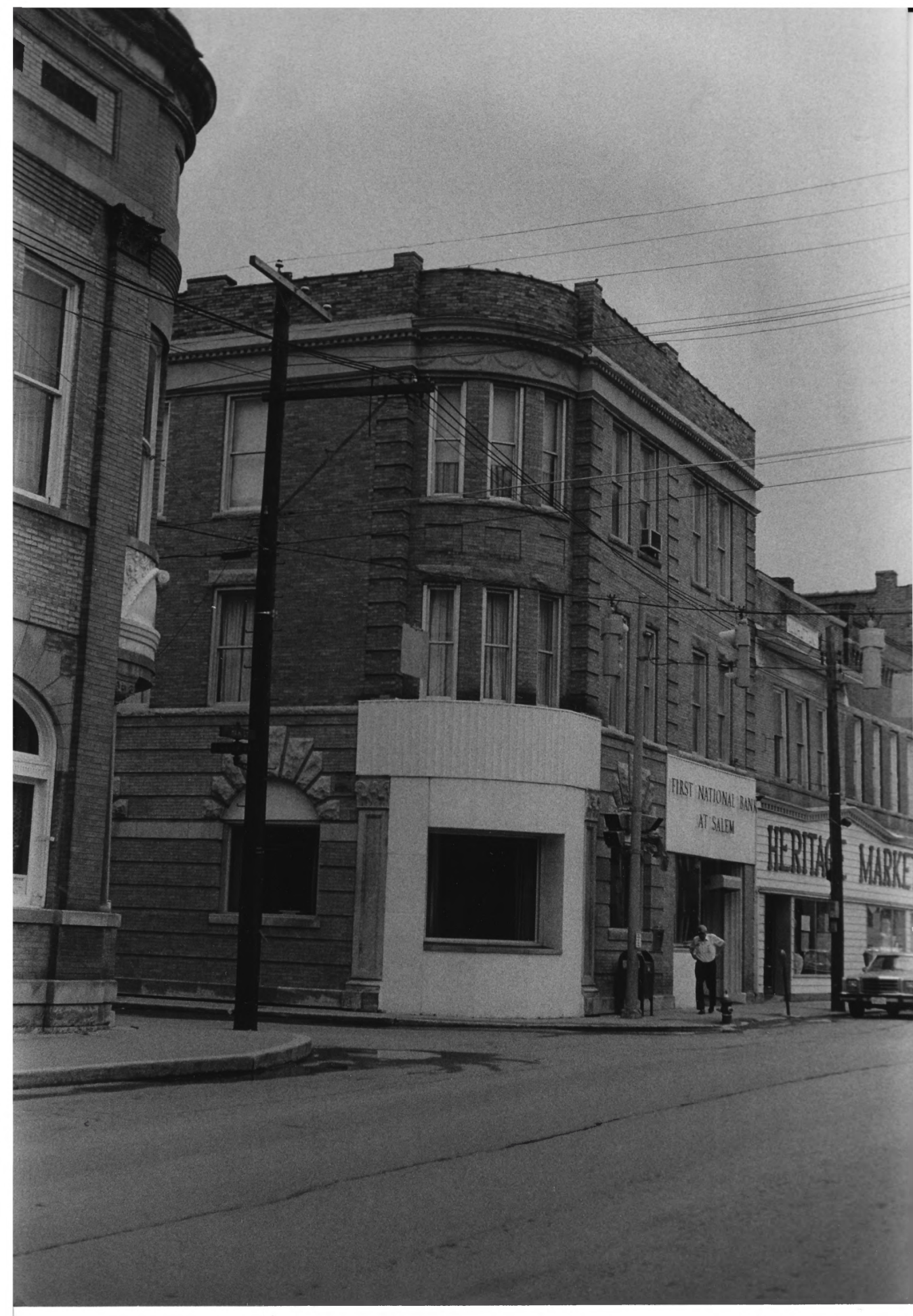


1. SALEM BAPTIST CHURCH  
(Salem Historic District)
2. Salem, West Virginia
3. Paul D. Marshall *Harrison Co.*
4. June 1980
5. Paul D. Marshall & Associates, Inc.
6. Southeast view
7. Photograph # *3/15*

DEC 2 1980

OCT 28 1980





FIRST NATIONAL BANK  
AT SALEM

HERITAGE MARKET

1. FIRST NATIONAL BANK BUILDING  
(Salem Historic District)
2. Salem, West Virginia
3. Jill Ziegler *Harrison Co*
4. June 1980
5. Paul D. Marshall & Associates, Inc.
6. South Elevation
7. Photograph # 4/15

DEC 2 1980

OCT 28 1980



UNITED STATES POST OFFICE  
SALEM WEST VIRGINIA



1. U. S. POST OFFICE  
(Salem Historic District)
2. Salem, West Virginia
3. Jill Ziegler
4. August 1979
5. Paul D. Marshall & Associates, Inc.
6. South Elevation
7. Photograph # 5/15-

*Harrison CO.*

DEC 2 1980

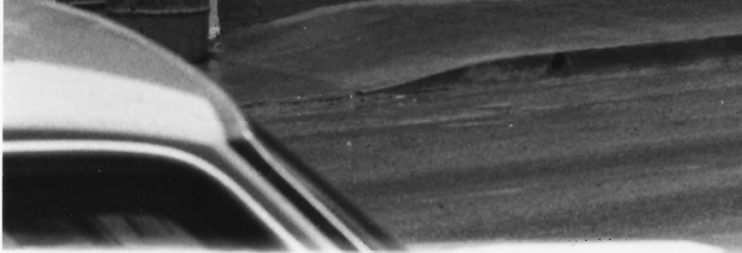
OCT 28 1980



BEN



FRANKLIN



1. Ben Franklin Store  
(Salem Historic District)
2. Salem, West Virginia
3. Paul D. Marshall *Harrison Co*
4. January 1980
5. Paul D. Marshall & Associates, Inc.
6. South facade
7. Photograph #6/15-Intrusions

DEC 2 1980

**OCT 28 1980**





1. Pearch/Randolph House  
(Salem Historic District)
2. Salem, WV
3. Jill Ziegler *Harrison Co*
4. June 1980
5. Paul D. Marshall & Associates, Inc.
6. South facade
7. Photograph #7/<sub>15</sub> Pivotal Structures

DEC 2 1980

OCT 28 1980





NO  
TURN  
ON RED

College INN  
for Pepper

79

ATTENTION

1414

1. BRISSEY INSURANCE BUILDING  
(Salem Historic District)
2. Salem, West Virginia: *Harrison Co.*
3. Jill Ziegler
4. June 1980
5. Paul D. Marshall & Associates, Inc.
6. Southeast view
7. Photograph # ~~8~~ *8/15*

DEC 2 1980

OCT 28 1980





COST PLUS TIRE CO.  
**CHAMPION**

STOP

1. Cost Plus Tires  
(Salem Historic District)
2. Salem, WV
3. Paul D. Marshall *Harrison Co*
4. June 1980
5. Paul D. Marshall & Associates, Inc.
6. East facade
7. Photograph # *9/5* Intrusions

DEC 2 1980

OCT 28 1980





1959

FIRST NATIONAL BANK  
AT GASTON

HERITAGE MARKET



BE

1. STREETScape - NORTH MAIN STREET  
(Salem Historic District)
2. Salem, West Virginia
3. Jill Ziegler *Harrison Co*
4. January 1980
5. Paul D. Marshall & Associates, Inc.
6. North side of Main Street
7. Photograph # ~~28~~ 10/15

DEC 2 1980

OCT 28 1980





THE HUDDLE

HERITAGE MARKET

BEN

KEY

1. STREETScape - WEST MAIN STREET  
(Salem Historic District)
2. Salem, West Virginia
3. Jill Ziegler
4. January 1980
5. Paul D. Marshall & Associates, Inc.
6. Looking West
7. Photograph # ~~27~~ 11/15

*Harrison Co.*

DEC 2 1980

OCT 28 1980



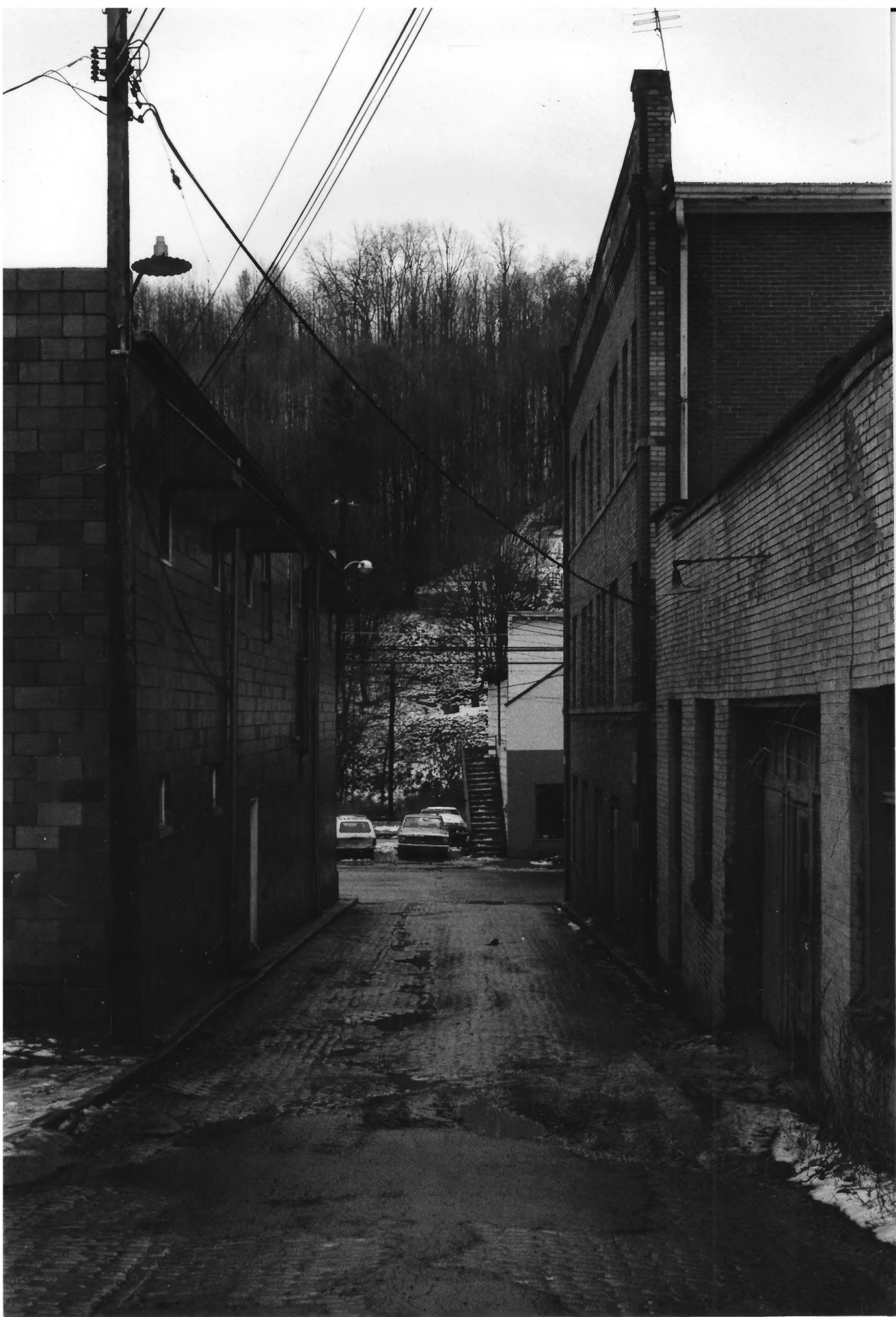


1. STREETScape - EAST MAIN STREET  
(Salem Historic District)
2. Salem, West Virginia
3. Jill Ziegler *Harrison Co.*
4. June 1980
5. Paul D. Marshall & Associates, Inc.
6. Looking East
7. Photograph # *26 12/5*

DEC 2 1980

OCT 28 1980





1. ERWIN STREET ALLEY  
(Salem Historic District)
2. Salem, West Virginia *Harrison Co*
3. Jill Ziegler
4. January 1980
5. Paul D. Marshall & Associates, Inc.
6. South
7. Photograph # *25 / 3 / J -*

DEC 2 1980

OCT 28 1980





Blank sign

THE Huddle

UNCLE'S NEWS STAND  
Royal Crown Cola

OSCAR "BOB" KELLEY

50'S RESTAURANT

OFFICE

SA

CITY RESTAURANT

1. STREETScape  
(Salem Historic District)
2. Salem, West Virginia
3. Paul D. Marshall *Harrison Co.*
4. June 1980
5. Paul D. Marshall & Associates, Inc.
6. South side - Main Street
7. Photograph # ~~24~~ 14/15

DEC 2 1980

OCT 28 1980





1. DAIRY DREAM & LUNCH  
(Salem Historic District)
2. Salem, West Virginia
3. Paul D. Marshall
4. June 1980
5. Paul D. Marshall & Associates, Inc. *Harrison Co.*
6. Northeast view
7. Photograph # 20 *15/15*

DEC 2 1980

OCT 28 1980