



1872 - Lincoln

L741-11

Southeast corner of Capitol ground,
Kennard and Gillispie homes. Photo
from book from the Burlington
Railroad Company.

Photo #1

Mt. Emerald & Capitol Additions Historic
Res. District, Lincoln, Lancaster Co., Nebr.
Present district location viewed from old
Nebraska State Capitol, 1872.

Photographer facing southeast.

Refer to Photo 2169

Nebr. State Historical Society Photo
Collection.

This photograph is supplied for research purposes only.
Permission to reproduce in any form must be obtained,
in writing, from the NEBRASKA STATE HISTORICAL
SOCIETY. Responsibility regarding questions of copyright,
photographic releases, and invasion of privacy that may
arise from the use this copy is assumed by the recipient.
In the event of publication, the credit line must read:

JUN 5 1980

Nebraska State Historical Society

MAY 6 1980



Photo #2 0861 8 MAY 1980

Mt. Emerald & Capitol Additions Historic *Res.*

District, Lincoln, Lancaster Co., Nebr.

District and environs viewed from obser-
vation deck of Nebr. State Capitol,

Photographer facing southeast.

Penelope Chatfield, Nebr. State Historical
Society, November, 1979.

Refer to Photo # 1/69 JUN 5 1980



Cup

N11/6.23

2-20

Photo #3/69

MAY 8 1980

Mt. Emerald & Capitol Additions Historic
Res. District, Lincoln, Lancaster Co., Nebr.
South side of "A" between 20th and 19th;
excluded from district.

Photographer facing southwest. JUN 5 1980
Penelope Chatfield, Nebr. State Historical
Society, 7811/6-23, November, 1979.



Cap
11/6-19
2-20

Photo #4/69 JUN 5 1980 MAY 8 1980
Mt. Emerald & Capitol Additions Historic
Res. District, Lincoln, Lancaster Co., Nebr.
Recent construction on northwest corner,
19th and "B", excluded from district.
Photographer facing northwest.
Penelope Chatfield, Nebr. State Historical
Society, 7911/6-19, November, 1979.



C49

N11/6-17

2-18

Photo #5/69 JUN 5 1980 MAY 8 1980
Mt. Emerald & Capitol Additions Historic
Res. District, Lincoln, Lancaster Co., Nebr.
New Constructions excluded from district,
northwest corner, 21st and "B",
Photographer facing northwest.
Penelope Chatfield, Nebr. State Historical
Society, 7911/6-17, November, 1979.



2-17

249MN

Cap

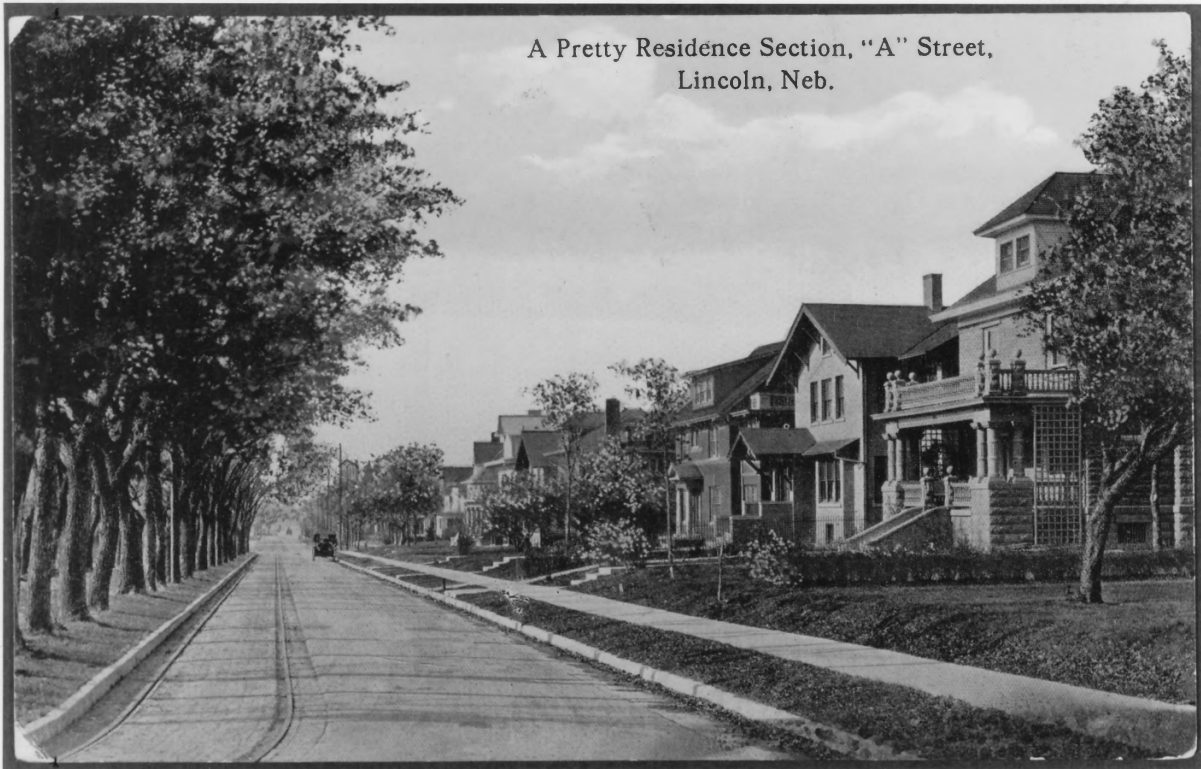
Photo #6/69 JUN 5 1980 MAY 8 1980
 Mt. Emerald and Capitol Additions Historic
 Res. District, Lincoln, Lancaster Co., Nebr.
 Recent constructions excluded from district,
 north side "F" Street between 18th & 19th.
 Photographer facing northwest.
 Penelope Chatfield, Nebr. State Historical
 Society, 7911/6-24, November, 1979.



DM 7401b7 4-7

Photo #7/69 JUN 5 1980 MAY 8 1980
Mt. Emerald & Capitol Additions Historic
Res. District, Lincoln, Lancaster Co., Nebr.
Area northeast of district; First-Plymouth
Congregational Church in background
Photographer facing southwest
David Murphy, Lincoln, Nebr., 7401b:7 (DM),
January, 1974.

A Pretty Residence Section, "A" Street,
Lincoln, Neb.



L244
Lancaster County

Photo #8/69
Mt. Emerald & Capitol Additions Historic
Res. District, Lincoln, Lancaster Co., Nebr.
Historic view, north side of "A" Street
between 20th & 21st, ca. 1913.
Photographer (unknown) facing west-northwest
Nebr. State Historical Society Photo
Collection, Lancaster County
Postcard File.

342
1031

This photograph is supplied for research purposes only. Permission to reproduce in any form must be obtained, in writing, from the NEBRASKA STATE HISTORICAL SOCIETY. Responsibility regarding questions of copyright, photographic releases, and invasion of privacy that may arise from the use this copy is assumed by the recipient. In the event of publication, the credit line must read:

JUN 5 1980

MAY 8 1980

Nebraska State Historical Society



Cap
N 1116-22
2-19

Photo #9/69

MAY 8 1980

Res Mt. Emerald & Capitol Additions Historic
District, Lincoln, Lancaster Co., Nebr.
North side of "A" Street between 20th &
21st.

JUN 5 1980

Photographer facing west-northwest
Penelope Chatfield, Nebr. State Historical
Society, November, 1979.

Refer to Photo # 8



416
7-1-14

Photo #10

Res. Mt. Emerald & Capitol Additions Historic
District, Lincoln, Lancaster Co., Nebr.
North side of "B" between 19th & 20th
Photographer facing east
Ca. 1920 photo in collection of Nebr.
State Historical Society, photographer
unknown.

MAY 8 1980

This photograph is supplied for research purposes only. Permission to reproduce in any form must be obtained, in writing, from the NEBRASKA STATE HISTORICAL SOCIETY. Responsibility regarding questions of copyright, photographic releases, and invasion of privacy that may arise from the use this copy is assumed by the recipient. In the event of publication, the credit line must read:

JUN 5 1980

Nebraska State Historical Society

JUN 5 1980

341
1281-5



Comp

W-4

Photo #11/69

Mt. Emerald & Capitol Additions Historic
Res. District, Lincoln, Lancaster Co., Nebr.
View of "B" Street from northeast corner
of 19th and "B".

JUN 5 1980

Photographer facing east.
Penelope Chatfield, Nebr. State Historical
Society, November, 1979. 7911/6-45

Refer to Photo # 10

MAY 8 1980



Camp
NW/6-15

Photo #12/69 **MAY 8 1980**

Mt. Emerald & Capitol Additions Historic
Res. District, Lincoln, Lancaster Co., Nebr.
North side of "F" Street; LC13:D7-19, 20,
164, 165, 166 & 167, **JUN 5 1980**

Photographer facing northeast.
Penelope Chatfield, Nebr. State Historical
Society, 7911/6-15, November, 1979.



Photo #13/69 JUN 5 1980
Mt. Emerald & Capitol Additions Historic
Res. District, Lincoln, Lancaster Co., Nebr.
North side of "B" Street between 17th and
18th (LC13:D7-367, 366 and 365)
Photographer facing northeast. MAY 8 1980
Penelope Chatfield, Nebr. State Historical
Society, 7911/6-31, November, 1979.

Cap

N11/6-31

2-12



Camp
N11116-32
3-10

Photo #14 / 69
Mt. Emerald & Capitol Addition's Historic
Res. District, Lincoln, Lancaster Co., Nebr.
West side of 17th Street between B and C
(LC13:D7-410, 399, and 398)
Photographer facing northwest.
Penelope Chatfield, Nebr. State Historical
Society, 7911/6-32, November, 1979.

JUN 5 1980

MAY 8 1986



Camp N 11/6-8 2-15

Photo #15/69 JUN 5 1980
Mt. Emerald & Capitol Additions Historic
Res, District, Lincoln, Lancaster Co., Nebr.
North side of "D" between 19th and 20th
Streets.
Photographer facing northeast. MAY 8 1980
Penelope Chatfield, Nebr. State Historical
Society, 7911/6-8, November, 1979.



2-19

116-12

Camp

Photo #16/69

JUN 5 1980

Res: Mt. Emerald & Capitol Additions Historic
District, Lincoln, Lancaster Co., Nebr.
North side of "D" between 20th and 21st
streets; tower of First-Plymouth
Congregational Church in center.

Photographer facing northwest
Penelope Chatfield, Nebraska State

Historical Society, 7911/6-12, Nov., 1979.

MAY 5 1980



Camp

N 11/6-10

2-15

Photo #17/109

MAY 8 1980

Mt. Emerald & Capitol Additions Historic
Res. District, Lincoln, Lancaster Co., Nebr.
North side of "D" between 21st and 22nd
streets.

JUN 5 1980

Photographer facing northeast
Penelope Chatfield, Nebraska State

Historical Society. 7911/6-10. Nov. 1979.



camp
11/6-6

Photo #18/69 JUN 5 1980
Mt. Emerald & Capitol Additions Historic
Res District, Lincoln, Lancaster Co., Nebr.
North side of "C" Street between 19th and
20th streets, MAY 8 1980
Photographer facing northeast
Penelope Chatfield, Nebr. State Historical
Society, 7911/6-6, November, 1979.



Camp
N 1/4-6-18
2-15

Photo #19/09

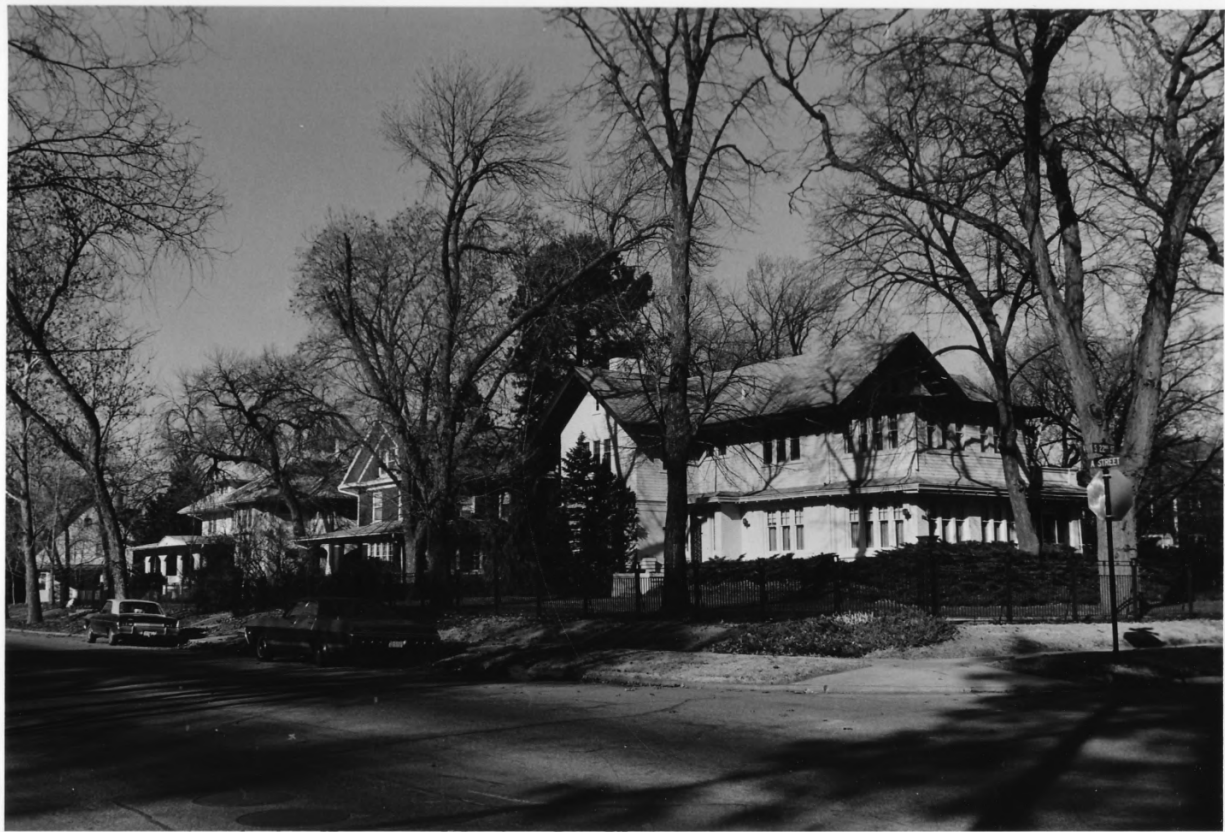
MAY 8 1980

Mt. Emerald & Capitol Additions Historic
Res. District, Lincoln, Lancaster Co., Nebr.
North side of "B" Street between 21st and
22nd (LC13:D7-576, 575, and 574)

Photographer facing northeast.

JUN 5 1980

Penelope Chatfield, Nebr. State Historical
Society, 7911/6-18, November, 1979.



Carp
NW/6-3
2-18

Photo #20/69 **MAY 8 1980**
Mt. Emerald & Capitol Additions Historic
res, District, Lincoln, Lancaster Co., Nebraska
View of "A" street from southeast corner of
22nd and "A"
Photographer facing northwest **JUN 5 1980**
Penelope Chatfield, Nebr. State Historical
Society, 7911/6-3, November, 1979.



Cap

7412b 35

420

Photo #21/69 JUN 5 1980
Mt. Emerald & Capitol Additions Historic
Res, District, Lincoln, Lancaster Co., Nebr.
Samuel Atwood House, LC13:D7-2, 740 South 17th
Photographer facing southeast
David Murphy, Lincoln, Nebr. 7412b:35 (DM)
December, 1974 MAY 8 1980



Camp

N1116.28

2-25

Photo #22 /69 **MAY 8 1980**

Mt. Emerald & Capitol Additions Historic
Res. District, Lincoln, Lancaster Co., Nebr.
Southwest corner of 18th and "G" (LC13:D7-
7 and 6).

Photographer facing northwest **JUN 5 1980**
Penelope Chatfield, Nebr. State Historical
Society, November, 1979.



Photo #23/69

MAY 8 1980
Mt. Emerald & Capitol Additions Historic
Res. District, Lincoln, Lancaster Co., Nebr.
First Presbyterian Church, LC13:D7-13, 17
and F Streets

Photographer facing northeast
Roger Bruhn, Lincoln, Nebr. RB7904/8a
April, 1979 **JUN 5 1980**



2-7
7901/186
Camp

Photo # 24/69

MAY 8 1980

Mt. Emerald & Capitol Additions Historic

Res. District, Lincoln, Lancaster Co., Nebr.

First Presbyterian Church, 17th & F Sts.

Photographer facing northeast

Roger Bruhn, Lincoln, Nebr., RB 7901/18b

Jan., 1979

JUN 5 1980



790'

18d

LCB1-5

Photo #25/169

MAY 8 1980

Mt. Emerald & Capitol Additions Historic
Res. District, Lincoln, Lancaster Co., Nebr.
First Presbyterian Church, LC13:D7-13, 17th
and F Streets, interior, photograph
facing west

Rogert Bruhn, Lincoln, Nebr., RB7901/18d
January, 1979.

JUN 5 1980



Cap 7412b 15 4.10

Photo #26/69 **MAY 8 1980**

Mt. Emerald & Capitol Additions Historic
Res. District, Lincoln, Lancaster Co., Nebr.
North side of "F" Street between 17th and
18th (LC13:D7-15 and 14),

Photographer facing northwest

David Murphy, Lincoln, Nebr., 7412b:15 (DM)
December, 1974.

JUN 5 1980



043
3-10
51

L741-1899

Photo #27/69 **MAY 8 1980**

Mt. Emerald & Capitol Additions Historic
Re District, Lincoln, Lancaster Co., Nebr.

Clark-Leonard House, 1937 F Street;
LC13:D7-24; historic view, ca. 1888;
refer to Photo 28

JUN 5 1980

Photographer facing south
Nebr. State Historical Society Photo Collec-
tion. NSHS-L741-1849.



1806/5C 2-91
Camp

Photo #28/69 **MAY 8 1980**
Mt. Emerald & Capitol Additions Historic
Rd, District, Lincoln, Lancaster Co., Nebr.
Clark-Leonard House, south side of "F"
between 19th and 20th (LC13:D7-24)
Photographer facing southwest
David Murphy, Lincoln, Nebr., 7608/12:22(DM) **JUN 5 1980**
August, 1976.



Cup

N 1116 - 14

295

Photo #29/09 **MAY 8 1980** **JUN 5 1980**
Mt. Emerald & Capitol Additions Historic
Res. District, Lincoln, Lancaster County, Nebr.
LCL3:D7-27 and 28, north side of "E"
between 18th & 19th
Photographer facing northeast
Penelope Chatfield, Nebr. State Historical
Society, 7911/6-14, November, 1979.



cap Dm 7402b:29 4-15

Photo #30/69 **MAY 8 1980** **JUN 5 1980**
Mt. Emerald & Capitol Additions Historic
Rec. District, Lincoln, Lancaster Co., Nebr.
Southwest corner of 18th and E (LC13:D7-35 and
257).
Photographer facing southwest
David Murphy, Lincoln, Nebr., 7402b:29(DM)
February, 1974.



Cap 7402c 28 4-9

Photo #31/69 **MAY 8 1980**
Mt. Emerald & Capitol Additions Historic
Res. District, Lincoln, Lancaster Co., Nebr.
James Wampler House.
Southwest corner of 20th and E; LC13:D7-37
Photographer facing west
David Murphy, Lincoln, Nebr., 7402c:28
February, 1974.



cup 7502/7-2 4.8

Photo #32/69
MAY 8 1980
Mt. Emerald & Capitol Additions Historic
Res. District, Lincoln, Lancaster Co., Nebr.
R. O. Phillips House
1845 D Street; LC13:D7-42 JUN 5 1980
Photographer facing southeast
David Murphy, Nebr. State Historical Society,
NSHS 7502+7:2, February, 1975.



Cap 7502b 4 4-10

Photo #33/69 MAY 8 1980
Mt. Emerald & Capitol Additions Historic
Res. District, Lincoln, Lancaster Co., Nebr.
The Stuart Aunties House., 1935 D; LC13:D7-43
Photographer facing south
David Murphy, Lincoln, Nebr., 7502b:4 (DM)
February, 1975

JUN 5 1980



Photo #34/69 **MAY 8 1980**

Mt. Emerald & Capitol Admissions Historic
Reo. District, Lincoln, Lancaster Co., Nebr.

W. E. Chapin House, LC13:D7-44, 20th & D
Photographer facing south

David Murphy, Lincoln, Nebr., 7402c:27(DM)
February, 1974.

JUN 5 1980

dm 7402c 27 4/12

FIRST PLYMOUTH CONGREGATIONAL CHURCH.
LINCOLN, NEB.



C562-93

Photo #35/69

Mt. Emerald & Capitol Additions Historic
Reo. District, Lincoln, Lancaster Col., Nebr.
First-Plymouth Congregational Church,
Historic view, ca. 1931
Photographer facing north **JUN 5 1980**
Nebr. State Historical Society Photo
Collection.

This photograph is supplied for research purposes only. Permission to reproduce in any form must be obtained, in writing, from the NEBRASKA STATE HISTORICAL SOCIETY. Responsibility regarding questions of copyright, photographic releases, and invasion of privacy that may arise from the use this copy is assumed by the recipient. In the event of publication, the credit line must read:

MAY 8 1980

Nebraska State Historical Society



4-10
Cap 7402f:30

Photo #36/69 **MAY 8 1980** **JUN 5 1980**
Mt. Emerald & Capitol Additions Historic
Res. District, Lincoln, Lancaster Co., Nebr.
First-Plymouth Congregational Church,
20th and D Streets; LC13:D7-45
Photographer facing southeast
David Murphy, Lincoln, Nebr., 7402f:30 (DM)
February, 1974.



OUR FATHER
WHO ART IN HEAVEN
Hallowed be
thy name
Thy Kingdom come
Thy will be done
on earth
as it is in heaven
Give us this day
our daily bread
and forgive us
our debts
as we forgive
our debtors
and lead us
not into temptation
but deliver us
from evil
For thine is
the kingdom
and the power
and the glory
forever - Amen

Photo #37/69 **MAY 8 1980**

Mt. Emerald & Capitol Additions Historic
Co. District, Lincoln, Lancaster Co., Nebr.
First-Plymouth Congregational Church, 20th
and D Streets; LC13:D7-45. Historic view
of apse, ca. 1931.

Photographer facing north **JUN 5 1980**
Nebr. State Historical Society Photo Collec-
tion.

Neg. # H673.5-267

121

800



Cap 7502b. 1 4.8

Photo #38/49 **MAY 8 1980**
Mt. Emerald & Capitol Additions Historic
Res. District, Lincoln, Lancaster Co., Nebr.
Wm. D. FitzGerald House, 20th & D
LG13:D7-46 **JUN 5 1980**
Photographer facing southeast
David Murphy, Lincoln, Nebr. 7502b:1 (DM)
February, 1975.



Copy 7707.068-4 a-19

Photo #39/19 **MAY 8 1980**
Mt. Emerald & Capitol Additions Historic
Res. District, Lincoln, Lancaster Co., Nebr.
Reese House, northwest corner, C and 20th
(LC13:D7-48), photographer facing northwest
Hassoln, Nebr. State Historical Society,
7707.068-04, July, 1977. **JUN 5 1980**



Capp 7902b 12
4-14

Photo #40/69 **MAY 8 1980** **JUN 5 1980**
Mt. Emerald & Capitol Additions Historic
Res. District, Lincoln, Lancaster Co., Nebr.
Northwest corner of 19th & D (LC13:D7-49)
Photographer facing west.
David Murphy, Lincoln, Nebr. 7502b:12 (DM)
February, 1975.



Carp 7502b-16 4-16

Photo #41/⁶⁹
MAY 8 1980
Mt. Emerald & Capitol Additions Historic
Res. District, Lincoln, Lancaster Co., Nebr.
James L. McAfee House, southeast corner
18th and C; LC13:D7-51 in center;
LC13:D7-531 on right
JUN 5 1980
Photographer facing southeast
David Murphy, Lincoln, Nebr., 7502b:16 (DM)
February, 1975



Cup 7707.065-28 4-8

Photo #42/69

MAY 8 1980

Res. Mt. Emerald & Capitol Additions Historic District, Lincoln, Lancaster Co., Nebr.
Ellery W. Davis House, 1345 South 18th;

LC13:D7-58

JUN 5 1980

Photographer facing northwest
Hassoln, Nebr. State Historical Society
7707.065-28, July, 1977.



4-17

7502b-23

Photo #43/09 **MAY 8 1980**

Mt. Emerald & Capitol Additions Historic *Res.*
District, Lincoln, Lancaster Co., Nebr.
North side of "B" Street between 20th &
19th (LC13:D7-61 and 596). **JUN 5 1980**

Photographer facing southwest
David Murphy, Lincoln, Nebr., 7502b:23 (DM)
February, 1975.



Carp 071-13 4-12

Photo #44/69 **MAY 8 1980**

JUN 5 1980

Mt. Emerald & Capitol Additions Historic
R.W. District, Lincoln, Lancaster County, Nebr.
Hahn-Ireland House, LC13:D7-62, 1900 A Str.,
Photographer facing northeast
Hassoln, Nebr. State Historical Society
7707.071-13, July, 1977.



Cup 7707.053-32 2-16

Photo #45/69 **MAY 8 1980**

Mt. Emerald & Capitol Additions Historic
Res. District, Lincoln, Lancaster County, Nebr.
1700 E Street: LC13:D7-121
Photographer facing northeast
Hassoln, Nebr. State Historical Society
July, 1977 7707.053-32

JUN 5 1980



Camp

7707.062-33

3.15

Photo #46/69

MAY 8 1980

Mt. Emerald & Capitol Additions, Historic
Res. District, Lincoln, Lancaster Co., Nebr.

Myron E. Wheeler House, 1717 D Street;

LC13:D7-360

JUN 5 1980

Photographer facing southeast

Hassoln, Nebr. State Historical Society

7707.062-33, June, 1977.



cap

7707.062-34

4-15

Photo #47/69 MAY 8 1980

Mt. Emerald & Capitol Additions Historic
Res District, Lincoln, Lancaster Co., Nebr.
Eugene Levi House, 1727 D Street; LC13:D7-361
Photographer facing south-southwest
Hassoln, Nebr. State Historical Society
7707.062-34, July, 1977. JUN 5 1980



Copy 7707.067-28

44

Photo #48/69 **MAY 8 1980**

Mt. Emerald & Capitol Additions Historic
Res. District, Lincoln, Lancaster Co., Nebr.
Alexander-Mickey House, 1915 D Street;

LC13:D7-471

JUN 5 1980

Photographer facing southeast

Hassoln, Nebr. State Historical Society

7707.067-28, July 1977.



Cap. 7707.068-2 3-17

Photo #49/69 **MAY 8 1980**
Mt. Emerald & Capitol Additions Historic
Res. District, Lincoln, Lancaster Co., Nebr.
John R. Moyer House, 1140 S. 20th
(LC13:D7-505) **JUN 5 1980**
Photographer facing northeast
Hassoln, Nebr. State Historical Society
7707.068-02, July, 1977.



Corp.
068-6 3-19

Photo #50/69 MAY 8 1980

Mt. Emerald & Capitol Additions Historic
Res. District, Lincoln, Lancaster Co., Nebr.
Meeker-Anderson House, LC13:D7-507, 1950 "C"
Photographer facing north-northwest
Hassoln, Nebr. State Historical Society
7707.068-06, July, 1977. JUN 5 1980



7707.068-8
4-4

Photo #51/69 **MAY 8 1980**
Mt. Emerald & Capitol Additions Historic
res. District, Lincoln, Lancaster Co., Nebr.
O. A. Robinson House, 1930 C Str.;
LC13:D7-509 **JUN 5 1980**
Photographer facing north-northeast
Hassoln, Nebr. State Historical Society
7707.068-68, July, 1977.



Cap env 2, 2-9

Photo #52/69 MAY 8 1980

Mt. Emerald & Capitol Additions Historic *Res.*
District, Lincoln, Lancaster Co., Nebraska

John Miller House, 1845 C Street;

LC13:D7-518

JUN 5 1980

Photographer facing southwest

Hassoln, Nebr. State Historical Society

7707.068-20, July, 1977



Camp 7707.068-22

4-10

Photo #53/09 **MAY 8 1980**
Mt. Emerald & Capitol Additions Historic *Res.*
District, Lincoln, Lancaster Co., Nebr.
Charles Fordyce House, 1921 C Street; L
LC13:D7-519
Photographer facing southwest **JUN 5 1980**
Hassoln, Nebr. State Historical Society
7707.068-22, July, 1977.'



Cup 7707.070-17
3-16

MAY 8 1980

Photo #54/69

Mt. Emerald & Capitol Additions Historic *Res.*
District, Lincoln, Lancaster Co., Nebr.
A. R. Talbot House, 2001 B Street

LC13:D7-577

JUN 5 1980

Photographer facing southeast
Hassoln, Nebr. State Historical Society
7707.070-17, July, 1977.



Cup 7707.070 36A 2-19

Photo #55 ~~69~~ MAY 8 1980
Mt. Emerald & Capitol Additions Historic *Res.*
District, Lincoln, Lancaster Co., Nebr.
Ida Robbins House, 1941 B Street;
LC13:D7-595 JUN 5 1980
Photographer facing southwest
Hassoln, Nebr. State Historical Society
7707.070-36A, July, 1977.



Cap 7207, 071. 7
3-12

Photo #56/MAY 8 1980

Mt. Emerald & Capitol Additions Historic *Res*
District, Lincoln, Lancaster Co., Nebr.

Reimers-Stephenson House, 1962 A Str.;

LC13:D7-600

Photographer facing northwest JUN 5 1980

Hassoln, Nebr. State Historical Society

7707.071-07, July, 1977.



Camp 7701/071
19
3
18

Photo #57/19 **MAY 8 1980**

Mt. Emerald & Capitol Additions Historic *Res.*
District, Lincoln, Lancaster Co., Nebr.

Hildreth-Grainger House, 2105 B Str.;

LC13:D7-611

JUN 5 1980

Photographer facing southwest
Hassoln, Nebr. State Historical Society
7707.071-19, July, 1977.



cop. 7707.071-21 3-17

Photo #58/69 **MAY 8 1980**

Mt. Emerald & Capitol Additions Historic *Res*
District, Lincoln, Lancaster Co., Nebr.

Noyes C. Rogers House, 2145 B. Str.;

LC13:D7-613

JUN 5 1980

Photographer facing southwest

Hassoln, Nebr. State Historical Society,

7707.071-21, July, 1977.



Cap 7707.071-17 4-9

MAY 8 1980

Photo #59/109

Mt. Emerald & Capitol Additions Historic *Res.*
District, Lincoln, Lancaster Co., Nebr.
1336 South 18th; LC13:D7-609
Photographer facing southeast JUN 5 1980
Hassoln, Nebr. State Historical Society,
7707.071-17, July 1, 1977.



Copy 071, 19 3-18

Photo #60/69 **MAY 8 1980** **JUN 5 1980**
Mt. Emerald & Capitol Additions Historic *Res.*
District, Lincoln, Lancaster Co., Nebr.
1324 South 18th; LC13:D7-610
Photographer facing southeast
Hasseln, Nebr. State Historical Society,
7707.071-18, July, 1977.



2-20

2207, 083-32

camp

Photo #6149 **MAY 8 1980**

Mt. Emerald & Capitol Additions Historic

Residence District, Lincoln, Lancaster Co., Nebr.

Alexander-Hamilton House, 2038 D Street;

LC13:D7-269

Photographer facing northeast

JUN 5 1980

Hassoln, Nebr. State Historical Society

7707.083-32, July, 1977.



4.12

6

Cap-071

Photo #62/69 **MAY 8 1980**

Res. Mt. Emerald & Capitol Additions Historic
District, Lincoln, Lancaster Co., Nebr.
Alexander-Burleigh House, 1970 A Street;

LC13:D7-599

Photographer facing northeast **JUN 5 1980**
Hassoln, Nebr. State Historical Society,
7707.071-6, July, 1977.



dup
7707.069. SA
4-9

Photo #63/⁶⁹
MAY 8 1980 JUN 5 1980
Mt. Emerald & Capitol Additions Historic
Rec. District, Lincoln, Lancaster Co., Nebr.
1260 South 20th Street; LC13:D7-534
Photographer facing northeast
Hassoln, Nebr. State Historical Society
7707.069-05A, July, 1977.



707.068-14 4-12

Photo #64/07 **MAY 8 1980**

Res. Mt. Emerald & Capitol Additions Historic District, Lincoln, Lancaster Co., Nebr.
Mayor Verne Hedge House, 1816 C Street;

LC13:D7-514

Photographer facing northwest **JUN 5 1980**
Hassoln, Nebr. State Historical Society

7707.068-14, July, 1977.



Photo #65/69 **MAY 8 1980** **JUN 5 1980**
Mt. Emerald & Capitol Additions Historic
Res. District, Lincoln, Lancaster Co., Nebr.
North side of "C" Street between 18th and
17th, Photographer facing northwest;
LC13:D7-49, 513 & 514.
Penelope Chatfield, Nebr. State Historical
Society, November, 1979.

Camp N11/6-29 2-18



Cap 2707
088 916 - 4 10

Photo #66/69
Mt. Emerald & Capitol Conditions Historic
Res. District, Lincoln, Lancaster Co., Nebr.
Swen W. Olson House, 2119 E Street;
LC13:D7-249
Photographer facing southwest
Hassoln, Nebr. State Historical Society
7707.058-16, July, 1977.

MAY 8 1980

JUN 5 1980



Camp 2202.058-14 4-17

Photo #67/69 **MAY 8 1980**

Res. Mt. Emerald & Capitol Additions Historic District, Lincoln, Lancaster Co., Nebr.
Albert Johnson House, 2137 E Street;
LC13:D7-247

Photographer facing southwest **JUN 5 1980**
Hasseln, Nebr. State Historical Society
7707.58-14, July, 1977.



cap

2207.064-4

4-11

Photo #68/69 **MAY 8 1980**

Mt. Emerald & Capitol Additions Historic
Rd. District, Lincoln, Lancaster Co., Nebr.

Olive Vinters House, 1635 C Street;

LC13:D7-397

JUN 5 1980

Photographer facing southeast

Hassoln, Nebr. State Historical Society,

7707.064-4, July, 1977.



Photo #69/6 **MAY 8 1980**

Reo Mt. Emerald & Capitol Additions Historic
District, Lincoln, Lancaster Co., Nebraska
Morris Weil House, 1149 South 17th Street
LC13:D7-50

Photographer facing southwest **JUN 5 1980**
Hassoln, Nebr. State Historical Society
7707/063-9, July, 1977.

copy
ent
2
9-12