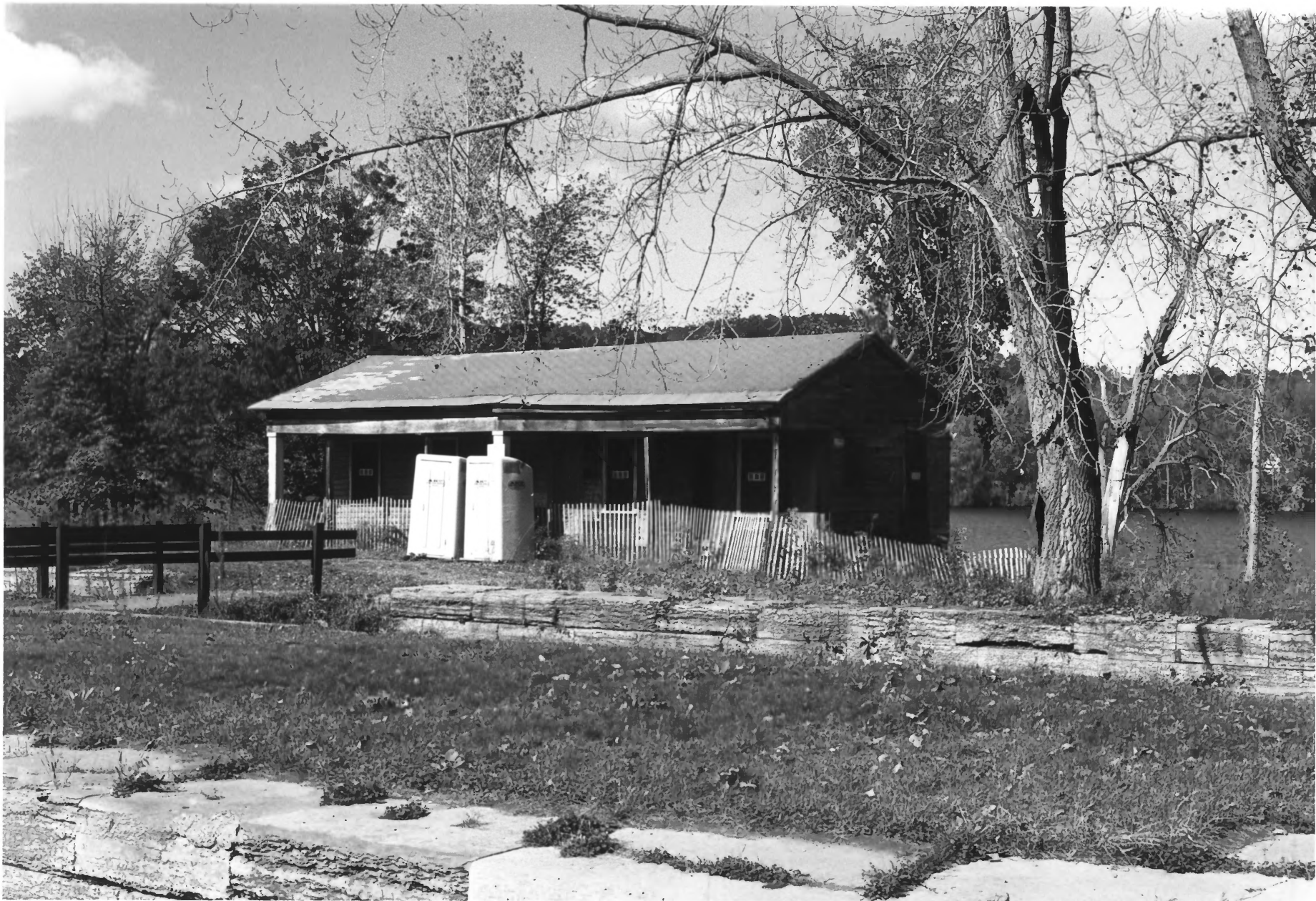


Erie Canal National Historic Landmark  
Glen and Florida, Montgomery Co., NY  
Credit: Charles H. Ashton, Heritage  
Studies, Inc., Oct. 1983. Negative at  
MARO, NPS. View W into Yankee Hill Lock, N  
side. Grocery (#1) at right. Photo 1 of  
21.



Erie Canal National Historic Landmark  
Glen and Florida, Montgomery Co., NY  
Credit: Charles H. Ashton, Heritage  
Studies, Inc., Oct. 1983. Negative at  
MARO, NPS. View N of Lock Grocery (#1);  
main house stood to left. Side by side  
locks in foreground. Photo 2 of 21.



Erie Canal National Historic Landmark  
Glen and Florida, Montgomery Co., NY  
Credit: Charles H. Ashton, Heritage  
Studies, Inc., Oct. 1983. Negative at  
MARO, NPS. View SW across canal, just W of  
Yankee Hill Lock. House is outside  
boundary. Photo 3 of 21.



Erie Canal National Historic Landmark  
Glen and Florida, Montgomery Co., NY  
Credit: Charles H. Ashton, Heritage  
Studies, Inc., Oct. 1983. Negative at  
MARO, NPS. View SW across canal showing  
rear of Wemp house (#2). Trees to right  
are in basin site. Photo 4 of 21.





Erie Canal National Historic Landmark  
Glen and Florida, Montgomery Co., NY  
Credit: Charles H. Ashton, Heritage  
Studies, Inc., Oct. 1983. Negative at  
MARO, NPS. View N from railroad of Wemp  
barns (#s 3,4). Canal out of view to rear.  
Photo 5 of 21.



Erie Canal National Historic Landmark  
Glen and Florida, Montgomery Co., NY  
Credit: Charles H. Ashton, Heritage  
Studies, Inc., Oct. 1983. Negative at  
MARO, NPS. View SE across Empire Lock.  
Photo 6 of 21.



Erie Canal National Historic Landmark  
Glen and Florida, Montgomery Co., NY  
Credit: Charles H. Ashton, Heritage  
Studies, Inc., Oct. 1983. Negative at  
MARO, NPS. View E on 1841 alignment  
showing typical canal scene. Ditch at  
right, towpath on berm to left. Photo 7 of  
21.



Erie Canal National Historic Landmark  
Glen and Florida, Montgomery Co.; NY  
Credit: Charles H. Ashton, Heritage  
Studies, Inc., Oct. 1983. Negative at  
MARO, NPS. View NW from Railroad Street,  
at East Guard Lock.  
L-R: Quiri house (#6), Enders house (#5).  
Photo 8 of 21.





Erie Canal National Historic Landmark  
Glen and Florida, Montgomery Co., NY  
Credit: Charles H. Ashton, Heritage  
Studies, Inc., Oct. 1983. Negative at  
MARO, NPS. View E into East Guard Lock.  
Quiri house (#6) out of view to L. Photo 9  
of 21.



Erie Canal National Historic Landmark  
Glen and Florida, Montgomery Co., NY  
Credit: Charles H. Ashton, Heritage  
Studies, Inc., Oct. 1983. View NE of  
Enders house (#5). Original canal is  
behind house, not visible. Photo 10 of 21.



Erie Canal National Historic Landmark  
Glen and Florida, Montgomery Co., NY  
Credit: Charles H. Ashton, Heritage  
Studies, Inc., Oct. 1983. Negative at  
MARO, NPS. View NE of Quiri house (#6).  
Photo 11 of 21.



Erie Canal National Historic Landmark  
Glen and Florida, Montgomery Co., NY  
Credit: Charles H. Ashton, Heritage  
Studies, Inc., Oct. 1983. View SW of  
outbuilding (#7). Photo 12 of 21.





Erie Canal National Historic Landmark  
Glen and Florida, Montgomery Co., NY  
Credit: Charles H. Ashton, Heritage  
Studies, Inc., Oct. 1983. Negative at  
MARO, NPS. View E of site of Lock 30.  
L-R: Maintenance garage (#8), Post Office  
(#9).

Photo 13 of 21.



Erie Canal National Historic Landmark  
Glen and Florida, Montgomery Co., NY  
Credit: Charles H. Ashton, Heritage  
Studies, Inc., Oct. 1983. Negative at  
MARO, NPS. View SE of former school (#10).  
Photo 14 of 21.



Erie Canal National Historic Landmark  
Glen and Florida, Montgomery Co., NY  
Credit: Charles H. Ashton, Heritage  
Studies, Inc., Oct. 1983. Negative at  
MARO, NPS. View SE of #11. Photo 15 of  
21.



Erie Canal National Historic Landmark  
Glen and Florida, Montgomery Co., NY  
Credit: Charles H. Ashton, Heritage  
Studies, Inc., Oct. 1983. Negative at  
MARO, NPS. View SW of (L-R) #s 13, 12, and  
11. Original canal bed out of view to  
rear. Photo 16 of 21.





Erie Canal National Historic Landmark  
Glen and Florida, Montgomery Co., NY  
Credit: Charles H. Ashton, Heritage  
Studies, Inc., Oct. 1983. Negative at  
MARO, NPS. View SW of #14. Canal bed  
marked by trees at L. Photo 17 of 21.



Erie Canal National Historic Landmark  
Glen and Florida, Montgomery Co., NY  
Credit: Charles H. Ashton, Heritage  
Studies, Inc., Oct. 1983. Negative at  
MARO, NPS. View E across Schoharie Creek  
of aqueduct. Photo 18 of 21.



Erie Canal National Historic Landmark  
Glen and Florida, Montgomery Co., NY  
Credit: Charles H. Ashton, Heritage  
Studies, Inc., Oct. 1983. Negative at  
MARO, NPS. Detail of aqueduct, W end.  
Photo 19 of 21.



Erie Canal National Historic Landmark  
Glen and Florida, Montgomery Co., NY  
Credit: Charles H. Ashton, Heritage  
Studies, Inc., Oct. 1983. Negative at  
MARO, NPS. View E across top of aqueduct;  
towpath at L, trunk was at R. Photo 20 of  
21.





Erie Canal National Historic Landmark  
Glen and Florida, Montgomery Co., NY  
Credit: Charles H. Ashton; Heritage  
Studies, Inc., Oct. 1983. Negative at  
MARO, NPS. View W from W end of aqueduct;  
Hartley Lane visible at rear. Photo 21 of  
21.



**Erie Canal, Fort Hunter, New York.  
This lock dates from the original  
canal.**

**October, 1958      National Park Service Photograph**



**Erie Canal, Fort Hunter, New York.**  
**The picture shows some of the original**  
**waterway.**

**March, 1958      National Park Service Photograph**



# PROPERTY OF THE NATIONAL REGISTER

NPS Number \_\_\_\_\_

Title: Erie Canal - NHL

Montgomery County, N.Y.

Loc. Schalowic Aqueduct

\_\_\_\_\_  
\_\_\_\_\_





# PROPERTY OF THE NATIONAL REGISTER

NPS Number 10/9/60

Title: Eric Canal - N#L

Montgomery County, NY

Loc. Scholastic Aqueduct

\_\_\_\_\_  
\_\_\_\_\_





1975

Erie Canal

Lock Grocery at Yankee Hill: west end  
and south (front) facade



1975

Erie Canal

Yankee Hill lock, facing east





1975

Erie Canal

1820 Lock at Fort Hunter, facing east



Schoharie Aqueduct - Erie Canal -  
extending east from west bank of  
Schoharie Creek.

1925-