

United States Department of the Interior
National Park Service

National Register of Historic Places
Registration Form



This form is for use in nominating or requesting determinations for individual properties and districts. See instructions in How to Complete the National Register of Historic Places Registration Form (National Register Bulletin 16A). Complete each item by marking "x" in the appropriate box or by entering the information requested. If any item does not apply to the property being documented, enter "N/A" for "not applicable." For functions, architectural classification, materials, and areas of significance, enter only categories and subcategories from the instructions. Place additional entries and narrative items on continuation sheets (NPS Form 10-900a). Use a typewriter, word processor, or computer, to complete all items.

1. Name of Property

historic name High Street Historic District

other names/site number _____

2. Location

street & number even # 8-72 High St. except #20A and #20R, plus # 31, 47, 57, 67 High Street n/a not for publication

city or town Wilmington _____ vicinity _____

state Massachusetts code MA county Middlesex code 017 zip code 01887

3. State/Federal Agency Certification

As the designated authority under the National Historic Preservation Act of 1986, as amended, I hereby certify that this nomination request for determination of eligibility meets the documentation standards for registering properties in the National Register of Historic Places and meets the procedural and professional requirements set forth in 36 CFR Part 60. In my opinion, the property meets does not meet the National Register Criteria. I recommend that this property be considered significant nationally statewide locally. (See continuation sheet for additional comments.)

Betsy Friedberg National Register Director 10/2/03

Signature of certifying official/Title Cathy H. Metz, State Historic Preservation Officer Date
Massachusetts Historical Commission

State or Federal agency and bureau

In my opinion, the property meets does not meet the National Register criteria. (See continuation sheet for additional Comments.)

Signature of certifying official/Title _____ Date _____

State or Federal agency and bureau

4. National Park Service Certification

- I, hereby certify that this property is:
- entered in the National Register
 See continuation sheet.
 - determined eligible for the National Register
 See continuation sheet.
 - determined not eligible for the National Register
 - removed from the National Register
 - other (explain): _____

Signature of the Keeper

Edson W. Beall

Date of Action

11/21/03

High Street HD
Name of Property

Middlesex, MA
County and State

5. Classification

Ownership of Property

(Check as many boxes as apply)

(Check only one box)

- private
- public-local
- public-State
- public-Federal
- building(s)
- district
- site
- structure
- object

Number of Resources within Property

(Do not include previously listed resources in the count.)

Contributing Noncontributing

21 2 building

_____ sites

_____ structures

_____ objects

21 2 Total

Name of related multiple property listing

(Enter "N/A" if property is not part of a multiple property listing.)

n/a

Number of contributing resources previously listed in the National Register

0

6. Function or Use

Historic Functions

(Enter categories from instructions)

Domestic/single dwelling, secondary structure

Current Functions

(Enter categories from instructions)

Domestic/single dwelling, secondary structure

7. Description

Architectural Classification

(Enter categories from instructions)

Greek Revival Queen Anne Craftsman

Materials

(Enter categories from instructions)

foundation brick

walls clapboard

shingle

roof asphalt

other _____

Narrative Description

(Describe the historic and current condition of the property on one or more continuation sheets.)

United States Department of the Interior
National Park Service

National Register of Historic Places Continuation Sheet

Section number 7 Page 1

High Street HD
Wilmington (Middlesex), MA

Narrative Description, High Street Historic District

The High Street Historic District is constituted of single-family houses laid out along High Street in the town of Wilmington eastward from its intersection with the broad Middlesex Avenue/MA Route 62 to the point where it makes a sharp turn southward to parallel Route I-93. The houses and their outbuildings are located on generally similar-sized suburban lots, respect a fairly standard setback, range between 1½ - 2½ stories high and are all wood frame. Six houses were constructed between ca. 1851 and 1856 giving a strong representation to Greek Revival and Italianate styles. The others were constructed between ca. 1900 and 1942 in the Queen Anne, Colonial Revival, Craftsman, and Neo-Colonial styles. Most of the district's seventeen principal buildings are located on the north side of the street, while only four are located on its south side. The well-preserved buildings possess coherence and a sense of visual boundaries introduced by the state highway on the west and the sharp bend in the street and interstate highway on the east.

The district contains seventeen principal houses, three carriage barns and three garages and contains about sixteen and one-half acres. One of the houses was moved down the street in 1928 to make room for the construction of another house in the district, two more were moved due to the construction of Route I-93 in 1958-1960. Many of the houses in the district remain largely unaltered. The most common alterations have been to porches, window sash and siding, with new clapboard and vinyl introduced. The non-contributing building was constructed after the period of significance.

The earliest surviving buildings in the district constitute a group of six houses constructed in the five years between about 1851 and 1856. Several were designed in an eclectic mix of mid-19th century styles that include the Greek Revival, Italianate, and Gothic Revival. All of these houses are three bays wide but two were designed with their long sides to the street in a side-gable form and place the entrance in the center of the three bays. The side-gable William Harnden Cottage at 40 High Street, built c. 1851-1852, (MHC # 151) is 1½ stories high with a central dormer to light the attic floor. Its Greek Revival features include long first floor windows, slightly pedimented door surround, single panel door,

United States Department of the Interior
National Park Service

National Register of Historic Places
Continuation Sheet

High Street HD

Section number 7 Page 2

Wilmington (Middlesex), MA

and recessed porch across the façade. The porch is supported on four aluminum columns that replaced the unique, original, deeply fluted wood columns. An ell currently links the now-altered barn to the cottage. The other side-gable house Charles Carter House, 14 High Street, (ca. 1853, MHC # 155, Photo # 1) is two stories and attic high. While the wide cornerboards, two-part entablature, long first floor windows and full-length sidelights are features of the Greek Revival style, its high proportions suggest a transition to the Italianate style. A two-story ell extends to the rear.

The remaining four houses of this mid-19th century group are all side-gable, side entry forms that are three bays wide and two or four bays deep. All have rear ells but it is difficult to determine whether they are original or added. Three of these houses, #'s 31, 32, and 26 share a distinctive, possibly local feature: they have open eaves and a raking cornice that curves to join the wide cornerboards resulting in an arched motif that recalls the Gothic Revival style. The William Townsend Cottage, 31 High Street, (ca. 1851-1852, MHC # 153, Photo # 2) is 1½ stories high with a window that interrupts the frieze band: the others are two stories and attic. The Jonathan Eames II House at 32 High Street (ca. 1852, MHC # 152) probably originally resembled the James P Morton House, at 26 High Street, (ca. 1855-1856, MHC # 154, Photo # 3) built by housewright Sylvester Woodward. The Morton House has an Italianate style wrap-around porch with chamfered posts carrying small capitals and curved brackets.

The last house of this group, the Silas Buck House at 42 High Street, (ca. 1852, MHC # 150, Photo # 4) is the only one of the group designed with a Greek Revival pediment in the gable-field of the façade. The full, hip-roofed porch with Queen Anne turned posts was probably added in the late 19th or early 20th century but it could be original with the posts replaced at a later date.

A second period of development in the district occurred between ca. 1880 and the 1920s. Six of the houses in the district were designed in the Queen Anne, Colonial Revival, and Craftsman/Bungalow styles. Few of these houses are pure examples of their styles as nearly all use associative design elements in an eclectic mix. 22 High Street, (ca. 1880, MHC # 231) though clad in new clapboard, shows the boxy plan, hip roof and wide gable roof. Its front pavilion with French doors on the façade is only two bays wide, placing the

(continued)

United States Department of the Interior
National Park Service

National Register of Historic Places
Continuation Sheet

High Street HD
Wilmington (Middlesex), MA

Section number 7 Page 3

columned front porch of the Georgian Revival style. The Sidelinker/Norton House, 57 High Street, (ca. 1893-1900, MHC # 148, Photo # 6) is cruciform in plan with a cross-entrance on a cross wing. While the shingled gable fields with slight flare are Queen Anne in feeling, the large fieldstone-skirted wraparound porch with paired colonettes standing on a kneewall that dominates the house expresses Colonial Revival design. This house reflects the plan of an earlier Sidelinker House at 47 High Street, (ca. 1890, MHC # 149) though number 57 was constructed at a larger scale. The house at 72 High Street, (MHC # 147) was moved on its lot in response to the construction of Route 93. Its door and windows have been altered but the massing and open-raked roof suggest a construction date of about 1880 to 1900. In 1914 C. B. Corlon owned the lot.

Two houses in the district are indebted to the Craftsman style for their design vocabulary. The Arthur Blake House at 54 High Street, (ca. 1910, MHC # 232) although 2 ½ stories high, assumes the shape and deeply sheltering roof of bungalow construction. Paired gabled dormers are set into the slope of the roof above an inset porch across the façade. Two authentic, well-preserved, shingled bungalows show how differently the form could be used. At the John Arthur Taylor House, 56 High Street, (ca. 1913, MHC # 233, Photo # 5) the deep enclosed porch extends from the body of the 1½ story cottage. Exposed rafter ends, wide shed roof dormer, and steeply pitched rooflines express Craftsman style ideas. The hip roofed MacLeod Cottage, 8 High Street, (ca. 1910-1924, MHC # 229, Photo #1) employs bungalow elements such as the deep porch and enclosing kneewall while using Colonial Revival imagery like the diamond-paned windows over the large window of the façade and Doric porch posts on high plinths. Holdovers from the Queen Anne style appear in the complex massing and the curve of the front porch that extends across the façade.

The third and smallest group of contributing houses constructed between 1929 and 1955 includes examples of Neo-Federal and Cape Cod styles. The Augustus Norton House, 67 High Street, (1929, MHC # 236, Photo # 7) was constructed on the former site of the Sidelinker House at 47 High Street, MHC # 149) which was moved down the street in 1928. Although now vinyl sided, it is an excellent example of the Neo-Federal style. Five bays long and two bays wide, it recapitulates the Federal form in placing the entry in the

(continued)

United States Department of the Interior
National Park Service

**National Register of Historic Places
Continuation Sheet**

**High Street HD
Wilmington (Middlesex), MA**

Section number 7 Page 4

central bay sheltered by a slightly altered open portico. However, the house's proportions, quarter fan window flanking the large external chimney, paired windows in the central bay of the second floor and sun porches at each end of the house place it clearly in the first quarter of the 20th century.

The 1942 house at 58 High Street, (MHC # 234, Photo # 8) is indicative of the suburban domestic development using the popular Cape Cottage idiom in the 1940s through 1970s.

Rectangular in plan, compact in massing, symmetrical in design and sparing in detail, the 1½ story cottage has a close cropped side-gable roof. The Neo-Federal entry placed in the central bay of the three-bay façade, shutters and central chimney are important elements in this reworking of an American iconography.

Archaeological Description

While no ancient Native American sites are currently located in the district, sites may be present. Six sites have been recorded in the general area (within one mile), in uplands bordering tributary streams of the Ipswich River and related wetlands. Environmental characteristics of the area support the presence of ancient Native American sites in the district. The district includes a well-drained, level to moderately sloping glacial outwash surface with wetlands in close proximity to the eastern and western ends of the district. The eastern end of the district lies within 1,000 feet of wetlands associated with Martins Brook, while the western end of the district lies within 1,000 feet of Lubbers Brook. Both Martins and Lubbers Brook are tributary streams of the Ipswich River. Given construction impacts associated with residential housing in the district and the location of the central portion of the district over 1,000 feet from the nearest wetlands, a moderate potential exists for locating significant ancient Native American resources in the district.

A high potential exists for locating historic archaeological resources in the district beginning with Wilmington's First Period of settlement and continuing throughout the 19th century. Structural evidence of a residence, barn, outbuildings, and occupational related features may survive from the Richard Harnden homestead (1665) at the

(continued)

United States Department of the Interior
National Park Service

National Register of Historic Places
Continuation Sheet

High Street HD
Wilmington (Middlesex), MA

Section number 7 Page 5

approximate site of 67 High Street. Similar archaeological resources may also survive for 18th century farmsteads and residences in the district although few have been identified. Structural evidence and related features may exist from the Dr. Jabez Brown House, built before 1769 nearly opposite 14 High Street, possibly outside the district. Potential 19th century sites in the district are more numerous than preceding periods, reflecting increased settlement and a transformation from agricultural to primarily residential and some commercial/industrial use in the area. In the 1950s, three 19th and 20th century houses were reportedly moved in the district, two in response to construction of Route 93. Structural evidence of the original house site and outbuildings may survive for the house at 72 High Street (c. 1880), moved on its lot for highway construction. The house at 60 High Street (1955) was also moved from the rear of its lot for highway construction. Archaeological evidence might also survive from two earlier houses located at the site of the existing house at 67 High Street. The earlier house at that address (ca. 1888-1898) was moved prior to construction of the existing house in 1929. The Richard Harnden Homestead (1665) is also reported at that address. Archaeological evidence of 19th century commercial/industrial sites may also exist in the district. The William Townsend House (ca. 1851-52) at 31 High Street and the James Eames House (ca. 1852) at 32 High Street were both built by shoemakers who may have conducted their trades in their homes or adjacent outbuildings. Structural evidence of outbuildings and the contents of occupational-related features (trash pits, privies, wells) may exist that contain evidence of shoemaking activities. The site of the C. S. Harriman Tannery, formerly the Perry, Cutler and Co. Tannery (1856), demolished in 1950, is located on Middlesex Avenue at the Boston and Maine Rail tracks outside the district. The site of a railroad depot, indicated on the map of 1856, is also located outside the district.

(end)

High Street HD

Name of Property

Middlesex, MA

County and State

8. Statement of Significance

Applicable National Register Criteria

(Mark "x" in one or more boxes for the criteria qualifying the property for National Register listing.)

- A** Property is associated with events that have made a significant contribution to the broad patterns of our history.
- B** Property is associated with the lives of persons significant in our past.
- C** Property embodies the distinctive characteristics of a type, period, or method of construction or represents the work of a master, or possesses high artistic values, or represents a significant and distinguishable entity whose components lack individual distinction.
- D** Property has yielded, or is likely to yield, information important in prehistory or history.

Criteria Considerations

(Mark "x" in all the boxes that apply.)

Property is:

- A** owned by religious institution or used for religious purposes.
- B** removed from its original location.
- C** a birthplace or grave.
- D** a cemetery.
- E** a reconstructed building, object, or structure.
- F** a commemorative property.
- G** less than 50 years of age or achieved significance within the past 50 years.

Narrative Statement of Significance

(Explain the significance of the property on one or more continuation sheets.)

9. Major Bibliographical References

(Cite the books, articles, and other sources used in preparing this form on one or more continuation sheets.)

Previous documentation on file (NPS):

- preliminary determination of individual listing (36 CFR 67) has been requested
- previously listed in the National Register
- previously determined eligible by the National Register
- designated a National Historic Landmark
- recorded by Historic American Buildings Survey # _____
- recorded by Historic American Engineering Record # _____

Areas of Significance

(Enter categories from instructions)

Architecture

Community Planning and Development

Period of Significance

ca. 1851-1953

Significant Dates

Significant Person

(Complete if Criterion B is marked above)

Cultural Affiliation

Architect/Builder

Sylvester Woodward

George Fall

Primary location of additional data:

- State Historic Preservation Office
- Other State agency
- Federal agency
- Local government
- University
- Other

Name of repository:

United States Department of the Interior
National Park Service

National Register of Historic Places Continuation Sheet

High Street HD
Wilmington (Middlesex), MA

Section number 8 Page 1

Narrative Statement of Significance, High Street Historic District

The High Street Historic District represents the transformation from an agricultural to primarily residential use at about the mid-19th century. Concurrently, the land was transferred from large landholders to village householders so visibly that it gained the name "New City" (the first "City" being the relatively densely settled agricultural node at Buck's Corner) in recognition of the new, more urban settlement pattern. Seven houses were erected in Greek Revival and Italianate designs, of which six remain. Houses continued to be built between 1881 and 1955 reflecting Wilmington's growth, but the density of the mid-19th century development makes a focus for the neighborhood. Three houses were moved, two to accommodate Highway I-93 in the 1950s. The district retains integrity of location, design, setting, materials, workmanship, feeling, and association and meets National Register criteria A and C on the local level.

Richard Harnden, one of Wilmington's earliest settlers, built a house on High Street about 1665, probably on the approximate site of 67 High Street, (MHC # 236) and accessed from Woburn Street. The house may have stood until the 1860s. The Town formally laid out High Street between 1794 and 1831. The only house shown on the street in 1831 belonged to Dr. Jabez Brown, the town's sole doctor during the Revolutionary War. It was built by Samuel Wright and sold to Dr. Brown in 1769 with forty acres. Heavily renovated in the High Victorian Style in the 1850s or 1860s, it was located nearly opposite 14 High Street and was demolished in the 1950s and new houses were constructed on the site.

In 1835-1836 the Andover and Wilmington Rail Road Corporation constructed a line west of High Street that became the Boston and Maine Rail Road Co. in 1845. A depot at the junction of Middlesex Avenue is indicated on the map of 1856. It may have been this transportation improvement or simply demand from a slow-growing non-agrarian middle class that opened High Street to the residential development.

In 1850, the land on the north side of the street from 26 High Street, (MHC # 154) westward to Middlesex Avenue was owned by the heirs of William Blanchard, Esquire, Wilmington's richest man and largest landowner. From 32 High Street (MHC # 152) eastward to Woburn Street was owned by Jonathan Harnden, a farmer. The south side of the street was the

(continued)

United States Department of the Interior
National Park Service

National Register of Historic Places
Continuation Sheet

High Street HD
Wilmington (Middlesex), MA

Section number 8 Page 2

property of Albert Harnden and members of the Blanchard family. The Blanchards and Carters, who were related by marriage, and the Harndens began selling acre lots about 1851. The lots on the north side were 20 rods deep (approximately 370 feet) by between 8 and 10 rods street frontage (approximately 132'-165'). Seven new houses had been constructed by 1856.

Five of the houses were built in the short period between 1851 and 1853. At least four of these first owners were members of old and large Wilmington families. The William and Hannah Harnden House, 40 High Street, (MHC # 151) was sold when the couple, then part of the exodus from Wilmington to the richer farming country of Wisconsin, sold it in 1866 to Civil War veteran George W. Sidelinker. The Sidelinker family remained in the house for fifty-five years and came to control most of the land on the west end of High Street. William Townsend, the first owner of 31 High Street, (MHC # 153, Photo # 2) was a shoemaker. He sold the house to Rev. Joshua Buffam of Lowell in 1870. James Eames II of 32 High Street (MHC # 152) was also a shoemaker. He and Townsend purchased land with others in the trade in the late 1840s.

Silas Buck's ca. 1852 house at 42 High Street, (MHC # 150, Photo # 4) remained in his family until 1894 when it was sold by foreclosure. Charles, a trader and Town Clerk in 1860-1861, and Mary Jane (Blanchard) Carter had their house at 14 High Street, (MHC # 155, Photo # 1) constructed about 1853. The land was owned by Mary Jane's family and sold to the couple only after the settlement of her parent's estates in 1858. Charles' brother William, who bought it in 1863, was treasurer of the Boston & Maine Railway in the 1870s and 1880s. The last of this group, 26 High Street, (MHC # 154, Photo # 3) was constructed ca. 1855-1856 for the James P. Morton family.

After the first building impetus of the 1850s, no construction in the district occurred until perhaps the 1880s. Approximately five to seven houses were built in the district between 1890 and 1915 when Wilmington's population doubled, reaching 2,330. Most of the development occurred at the west end of High Street on land owned by the numerous Sidelinker family. George W. Sidelinker purchased much of this land in 1887 but only sold to non-family members in the first decades of the 20th century. Sidelinkers lived in 47 High Street, (MHC #

(continued)

United States Department of the Interior
National Park Service

National Register of Historic Places
Continuation Sheet

High Street HD
Wilmington (Middlesex), MA

Section number 8 Page 3

149) when it was located on the present site of 67 High Street, (MHC # 236) and at 57 High Street, (MHC #148). Thomas T. Sidelinker planned a twenty-four-lot subdivision in 1914 along a paper street at the approximate location of Fox Run Drive that was accepted by the Town in 1989.

The Harriman-MacLeod bungalow at 8 High Street, (MHC # 229, Photo # 1) was probably built ca. 1910-1924 for Caleb S. Harriman, owner of the C. S. Harriman Tannery, formerly the Perry, Cutler and Co. Tannery (1856) on Middlesex Avenue at the Boston and Maine rail tracks. Making leather used for Union Army shoes during the Civil War, the tannery became the town's largest business. It closed in 1950 and was demolished. Harriman deeded the land to his daughter and son-in-law in 1924. The bungalow may have been built with the mortgage Gladys Harriman MacLeod obtained in 1924, though from stylistic evidence the house was already standing.

Caleb Harriman was also involved in the mortgage of the ca. 1913 bungalow at 56 High Street, (MHC # 233) for his close business associate J. Arthur Taylor. Taylor was Measurer of Leather for the Town in 1900. Arthur Blake, another Harriman business associate, lived next door at 54 High Street, (MHC # 232) on a lot he purchased in 1910 from Thomas Sidelinker before his subdivision plan was drawn. Thus, while the tannery did not appear to have been the impetus to build on High Street in its earliest development, it did play a role in the construction of homes here in the early 20th century.

After buying the lot at 67 High Street and moving the house then on it to 47 High Street Augustus Norton built his new house there in 1929, possibly the third house on the site. Constructed just before the Depression, it was the last to be erected in the district until 1942. Mr. Norton traveled for an insurance company and grew crops for family consumption on the large lot. The house has remained in the Norton-Neilson family. The local newspaper owners and unofficial town historians, two generations of this family have been active in researching and publishing articles on the town's historic resources.

Improved automobile access in the form of Route I-93 constructed 1958-1960 impacted the district. The house at 60 High Street (1955, MHC # 235) was moved from the rear of its lot

(continued)

United States Department of the Interior
National Park Service

National Register of Historic Places
Continuation Sheet

High Street HD
Wilmington (Middlesex), MA

Section number 8 Page 4

during the construction of the highway. Suburban development surrounding the district quickened with the acceptance of Linda Road in 1955 and Fox Run Drive in 1989. More recently, houses were constructed on dog-leg lots excluded from the district and another well set back on the lot at 20 High Street, (1989, MHC # 230).

Architectural Significance

The ca. 1851-1852 side-gable William Harnden Cottage, 40 High Street, (MHC # 151) is the only example of this Greek Revival, full recessed porch type in Wilmington. Just as unique were the four narrow, deeply carved quatrefoil columns that formerly supported the roof. Also unusual is the placement of the side ell parallel to the house and connecting to a former outbuilding.

The houses at 31 High Street (MHC # 153), 32 High Street (MHC # 152), and 26 High Street (MHC # 154) possess a common distinctive feature that combines open eaves with a raking cornice that curves to join the wide cornerboards in an arched, almost Gothic Revival motif. We know that James P. Morton of 26 High Street copied the design of 32 High Street located next door when he instructed Sylvester Woodward, his housewright, that "the style and quality of finish (to be) the same as John Eames House" [quoted in Feiffer, #C-154, 1977]. Morton further specified that the builder complete the frame but leave much of the interior unfinished.

Another of the first six houses known to have been built by a housewright is the Charles H. Carter House, 14 High Street, (ca. 1853, MHC # 155, Photo # 1). It too was to be based on a previous design of a house the builder, George Fall of Malden, had constructed. In this case the Carter house was to be built with square instead of curved staircases and without brackets. The changes may relate to cost or to maintaining a more Greek Revival than Italianate appearance.

The houses built in the district in the late 19th to the mid-20th centuries are all good examples of their styles. Particularly distinctive is the bold fieldstone kneewall of the porch that wraps the ca. 1895 Sidelinker House, 57 High Street, (MHC # 148, Photo # 6) the strong Craftsman design of the house at 54 High Street, (MHC # 232) and the bungalow at 56 High Street, (MHC # 233). Another bungalow at 8 High Street, (MHC # 229, Photo #1) is more eclectic in

(continued)

United States Department of the Interior
National Park Service

National Register of Historic Places
Continuation Sheet

High Street HD
Wilmington (Middlesex), MA

Section number 8 Page 5

its combination of Queen Anne, Colonial Revival, and Craftsman forms and design vocabularies.

The well-preserved and maintained aspect of several of these houses plays an important part in their architectural significance. Notable are the earliest remaining houses at 26 High Street, (MHC # 154, Photo # 3), 31 High Street, (MHC #153, Photo # 2) and 42 High Street , (MHC # 150, Photo #4) and the later 8 High Street (MHC # 229, Photo # 1), 56 High Street (MHC # 233), 57 High Street (MHC#148, Photo # 6), 58 High Street (MHC # 234) and 67 High Street (MHC # 236).

Archaeological Significance

Since patterns of ancient Native American settlement in Wilmington are poorly documented, any surviving sites could be significant. Ancient sites in this area may contribute important information relating to patterns of Native settlement and subsistence in the interior Ipswich River drainage, an area that is poorly documented when compared to more coastal locales. Native sites in this area may contain information that indicates the seasonal, functional, and socio/political role of sites located along interior tributary streams and wetlands, with larger sites located along the Ipswich River and coastal areas within the Ipswich drainage.

Historic archaeological resources described above have the potential to contribute detailed information on the social, cultural, and economic patterns that characterized the High Street Historic District's transformation from agricultural landuse beginning in the 17th century to primarily residential landuse in the mid-19th century. Potential structural evidence from the Richard Harnden homestead (1665), one of the earliest settlements in Wilmington, may contribute valuable evidence on the town's first period of settlement including the layout of First Period farms, architectural features of First Period buildings, and general life in Wilmington and in the High Street District during the period when an agricultural economy characterized settlement in the town. While farmsteads and residences may exist in the

(continued)

United States Department of the Interior
National Park Service

National Register of Historic Places

Continuation Sheet

High Street HD
Wilmington (Middlesex), MA

Section number 8 Page 6

district dating to the 18th century, a period also characterized by an agricultural economy, no definite sites within the district have yet to be identified. One site, the Dr. Jabez Brown House (pre 1769), is described as nearly opposite 14 High Street. Potential archaeological evidence at that site may contribute important information relating to 18th century medical practices and technologies and life in Wilmington. Structural evidence from residences, outbuildings, and detailed analysis of the contents from occupational-related features may also contribute important information relating to 19th century life in the district and its transformation from agricultural to residential landuse. Additional documentary research combined with the above information may contribute important information on the economic role of shoemaking in the district and potential relationships with the nearby C. S. Harriman Tannery. Historical and archaeological information might also be available indicating the extent that residences in the district were used as housing for tannery owners or workers. The above information may help clarify the role of local industry in the district's transformation to residential landuse.

(end)

United States Department of the Interior
National Park Service

National Register of Historic Places
Continuation Sheet

High Street HD
Wilmington (Middlesex), MA

Section number 9 Page 1

9. Major Bibliographical References

Maps:

Town of Wilmington	Thompson, Samuel	1794.
Town of Wilmington	Edmund Parker	1831
Map of Middlesex County	Walling, Henry F.	1857
Atlas of Middlesex County	Beers, F. W.	1875
Atlas of Middlesex County	Walker, George H. and Co.	1889
Plan of Lots, N. Wilmington	illegible	1919
Belonging to T. Sidelinker		
Town of Wilmington	Dept. of Public Works?	1935
Map of Wilmington	Alden N. Eames, Surveyor	1953
Map of Wilmington	Whitman and Howard	1955
Wilmington (in 1775)	Murray, James	1977
People and Points of	Wilmington Hist. Comm.	199?
Interest in Wilmington		

Public Records and Sources

Pfeiffer, Brian, Historic Resources Inventory of Wilmington, MHC, 1977.
 Massachusetts Historical Commisison, Reconnaissance Survey Report, Wilmington, 1981.
 North Middlesex County Registry of Deeds, Deeds and Plans.
 Town of Wilmington, Valuation, 1855.
 Town of Wilmington Annual Reports, 1897, 1900, 1935,

Published Materials

Bond Collection, Photographs, clippings, etc.
 Conklin, Edwin, Middlesex County and Its People, Vol. II, Lewis, 1927.
 Deming, Henry, R., Historical Sketch: Growth and Progress of Wilmington, Sub-committee of the 200th Anniversary Committee, Boston, 1930.
 Hurd, Hamilton, D., History of Middlesex County, J. W. Lewis, Philadelphia, 1890.
 Kelly, James E., Wilmington Records: Births Marrages and Deaths, Lovell, 1898.
 Lainhart, Ann S. (compiler), Massachusetts Census: 1855-1865, Boston, 1985.

(continued)

United States Department of the Interior
National Park Service

**National Register of Historic Places
Continuation Sheet**

High Street HD
Wilmington (Middlesex), MA

Section number 9 Page 2

Noyes, Rev. Daniel P., Wilmington: Historical Address, Cochrane & Sampson, Boston, 1881.

McKie, Madelyn, "Yesterday, Today and Tomorrow".

Passmore, Adel C., "Selected Eighteenth Century Wilmington Historical Sites", Wilmington Historical Commission, 1976.

Passmore, Adel C., "250th Anniversary, Wilmington, Massachusetts", Hampshire Press, Wilmington, 1980.

Passmore, Adel C., "The Story of Harnden Tavern".

Wilmington Rotary Park, Inc., Wilmington's 225th Anniversary: 1730-1955.

Other Sources

Interviews with Stuart Neilson and Larz F. Neilson

(end)

High Street HD
Name of Property

Middlesex, MA
County, State

10. Geographical Data

Acreage of Property approx. 16.5 acres

UTM References See continuation sheet.

(Place additional UTM references on a continuation sheet)

1. 19	323000	4715400	3. 19	323500	4715320
Zone	Easting	Northing	Zone	Easting	Northing
2. 19	323480	4715460	4. 19	323000	4715340
Zone	Easting	Northing	Zone	Easting	Northing

-- See continuation sheet

Verbal Boundary Description

(Describe the boundaries of the property on a continuation sheet.)

Boundary Justification

(Explain why the boundaries were selected on a continuation sheet.)

11. Form Prepared By

name/title Heli Meltsner, consultant with Betsy Friedberg, NR Director, MHC

organization Massachusetts Historical Commission date August 2003

street & number 220 Morrissey Boulevard telephone 671-727-8470

city or town Boston state MA zip code 02125

Additional Documentation

Submit the following items with the completed form:

Continuation Sheets

Maps

A **USGS map** (7.5 or 15 minute series) indicating the property's location.

A **sketch map** for historic districts and properties having large acreage or numerous resources.

Photographs

Representative **black and white photographs** of the property.

Additional items (Check with the SHPO or FPO for any additional items)

Property Owner

(Complete this item at the request of the SHPO or FPO.)

name multiple

street & number _____ telephone _____

city or town _____ state _____ zip code _____

Paperwork Reduction Act Statement: This information is being collected for applications to the National Register of Historic Places to nominate properties for listing or determine eligibility for listing, to list properties, and to amend existing listings. Response to this request is required to obtain a benefit in accordance with the National Historic Preservation Act, as amended (16 U.S.C. 470 et seq.).

Estimated Burden Statement: Public reporting burden for this form is estimated to average 18.1 hours per response including the time for reviewing instructions, gathering and maintaining data, and completing and reviewing the form. Direct comments regarding this burden estimate or any aspect of this form to the Chief, Administrative Services Division, National Park Service, P.O. Box 37127, Washington, DC 20013-7127; and the Office of Management and Budget, Paperwork Reductions Project (1024-0018), Washington, DC 20503.

**United States Department of the Interior
National Park Service**

**National Register of Historic Places
Continuation Sheet**

**High Street HD
Wilmington (Middlesex), MA**

Section number 10 Page 1

10. High Street Boundary Justification

The boundaries of the High Street Historic District have been selected to encompass those historic resources retaining architectural integrity within the visually and physically enclosed space of High Street located between Middlesex Avenue-Salem Street (Route 62) and the point near Route 93 where High Street makes a sharp bend southward. On the west this portion of High Street is visually defined by the major traffic artery Route 62, which bisects High Street and cuts off the High Street Historic District from historic building to the west. On the east the abrupt southward bend makes a visual barrier.

Historic development begun in the mid-nineteenth century continued through the first half of the twentieth century but most of the historic development occurred on the north side of the street with a few exceptions that have been included. This accounts for the uneven southern boundary. Lot lines have been used to define the boundaries except where contemporary dog-leg lots at 20A and 20R High Street have allowed recently constructed houses to be set back so far back on their lots as to be visually inaccessible. Here the boundary was extended from the adjacent lot parallel to High Street so as to place those houses outside the boundary.

(end)

**HIGH STREET HISTORIC DISTRICT
WILMINGTON (Middlesex), MA
DISTRICT DATA SHEET**

MHC#	MAP/LOT	STREET ADDRESS	HISTORIC NAME	DATE	STYLE	STATUS	
229	96-7	8 High Street	Harriman-MacLeod House	ca. 1910-24	Bungalow/ Colonial Revival	B	C
155	96-8	14 High Street	Charles Carter House	ca. 1853	Greek Revival	B	C
230	96-A	20 High Street	Anderson House	1989	Contemp. Ranch	B	NC
231	96-10	22 High Street		ca. 1881-1900	Queen Anne	B	C
154	96-11	26 High Street	William Morton House carriage barn	ca. 1855-56 late 19 th c.	Gr Rev / Ital.	B	C
153	88-18	31 High Street	William Townsend House barn	ca. 1851-52 ca. 1850s	Greek Revival	B	C
152	96-12	32 High Street	Jonathan Eames II House	ca. 1852	Greek Revival/ Gothic Revival	B	C
151	96-13	40 High Street	William Harnden House	1851-52	Greek Revival	B	C
150	95-1	42 High Street	Silas Buck House garage	ca. 1852 ca. 1900	Greek Revival	B	C
149	87-6A	47 High Street	Sidelinker/Norton House	ca. 1890	Queen Anne	B	C
232	95-2	54 High Street	Arthur Blake House	ca. 1910	Crafts/Col Rev	B	C
233	95-3	56 High Street	John A. Taylor House	ca. 1913	Crafts/Bungalow	B	C
148	87-6C	57 High Street	Sidelinker House	ca. 1893-1900	QA/Col Revival	B	C
234	95-4	58 High Street		1942	Cape	B	C
			garage			B	C
235	95-5A	60 High Street		1955	Cape	B	NC
236	87-6E	67 High Street	Augustus Norton House garage	1929 1929	Neo-Federal	B	C
147	95-6	72 High Street	C.B. Carleton House carriage barn	ca. 1880	Queen Anne	B	C

TOTAL RESOURCES 23

Contributing buildings 21

Noncontributing buildings 2

**United States Department of the Interior
National Park Service**

**National Register of Historic Places
Continuation Sheet**

**High Street HD
Wilmington (Middlesex), MA**

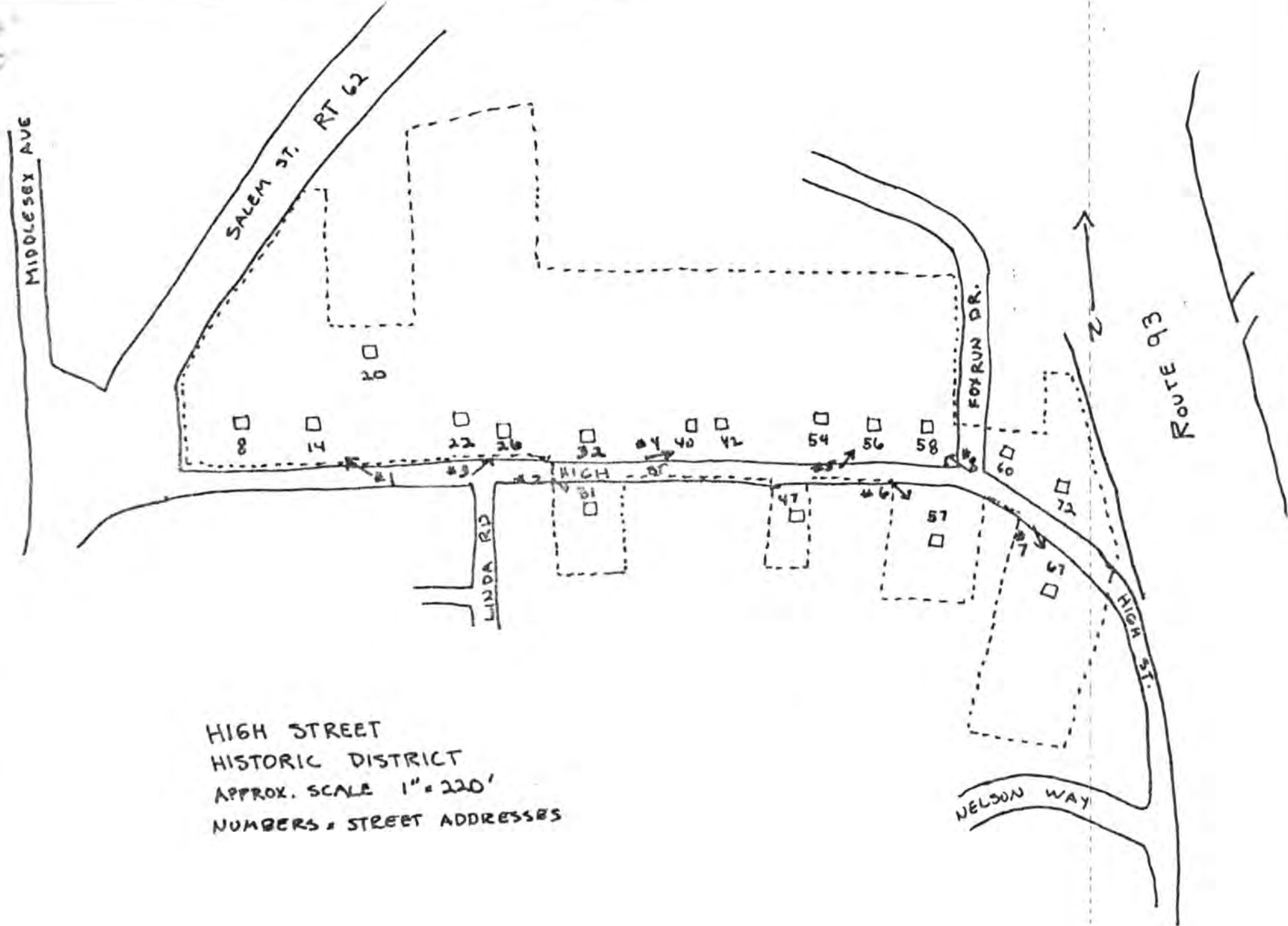
Section number photo Page 1

PHOTOGRAPHS

**HIGH STREET HISTORIC DISTRICT
Wilmington
Middlesex County, Massachusetts**

Photographer Heli Meltsner
Date December 10, 2001
Negative location Massachusetts Historical Commission, 220 Morrissey Boulevard
 Boston, MA 02125

1. Streetscape: Charles Carter House, 14 High Street looking northwest
Harriman-MacLeod House, 8 High Street at rear
2. William Townsend House, 31 High Street looking southeast
3. William Morton House, 26 High Street looking northeast
4. Silas Buck House, 42 High Street looking northeast
Arthur Blake House, 54 High Street at rear
5. John A. Taylor House, 56 High Street looking northeast
6. Sidelinker House, 57 High Street looking southeast
7. Augustus Norton House, 67 High Street looking southeast
8. 58 High Street looking northwest
John A. Taylor House, 56 High Street at rear



HIGH STREET
 HISTORIC DISTRICT
 APPROX. SCALE 1" = 220'
 NUMBERS = STREET ADDRESSES

UNITED STATES DEPARTMENT OF THE INTERIOR
NATIONAL PARK SERVICE

NATIONAL REGISTER OF HISTORIC PLACES
EVALUATION/RETURN SHEET

REQUESTED ACTION: NOMINATION

PROPERTY High Street Historic District
NAME:

MULTIPLE
NAME:

STATE & COUNTY: MASSACHUSETTS, Middlesex

DATE RECEIVED: 10/06/03 DATE OF PENDING LIST: 11/05/03
DATE OF 16TH DAY: 11/21/03 DATE OF 45TH DAY: 11/20/03
DATE OF WEEKLY LIST:

REFERENCE NUMBER: 03001177

REASONS FOR REVIEW:

APPEAL: N DATA PROBLEM: N LANDSCAPE: N LESS THAN 50 YEARS: N
OTHER: N PDIL: N PERIOD: N PROGRAM UNAPPROVED: N
REQUEST: N SAMPLE: N SLR DRAFT: N NATIONAL: N

COMMENT WAIVER: N

ACCEPT RETURN REJECT 11/21/03 DATE

ABSTRACT/SUMMARY COMMENTS:

*Entered in the
National Register*

RECOM./CRITERIA _____

REVIEWER _____ DISCIPLINE _____

TELEPHONE _____ DATE _____

DOCUMENTATION see attached comments Y/N see attached SLR Y/N



HIGH ST. HD

WILMINGTON (MIDDLESEX) MA

14 HIGH ST. 8 HIGH ST (rear)

PHOTO # 1



31 High Street
Wilmington, Middlesex Co, MA
High Street Historic District
Photo # 2

F&D A####
0555 07 N N N-1-00 GR08 2118/100



HIGH ST. (H)

WILMINGTON (MIDDLESEX) MA

26 HIGH ST.

PHOTO # 3



42 High Street
Wilmington, Middlesex Co., MA
High Street Historic District
Photo # 4

F&KING 12 V908 EN
0553 07 N 111 N-33 GR00 Z118/104



56 High Street
Wilmington, Middlesex Co., MA
High Street Historic District
Photo #5

135 2005 BN
2553 07 N N N-1 08 GR08 2118/100



57 High Street
Wilmington, Middlesex Co., MA
High Street Historic District
Photo #6

FED. NO. 20A-2021BN
0554 07 N N N-1-20 5003 3118/100



67 High Street
Wilmington, Middlesex Co., MA
High Street Historic District
Photo #7

F&D<NO - 1 1/2 >0146N
0553 07 N N N N-05 GR08 2118/180

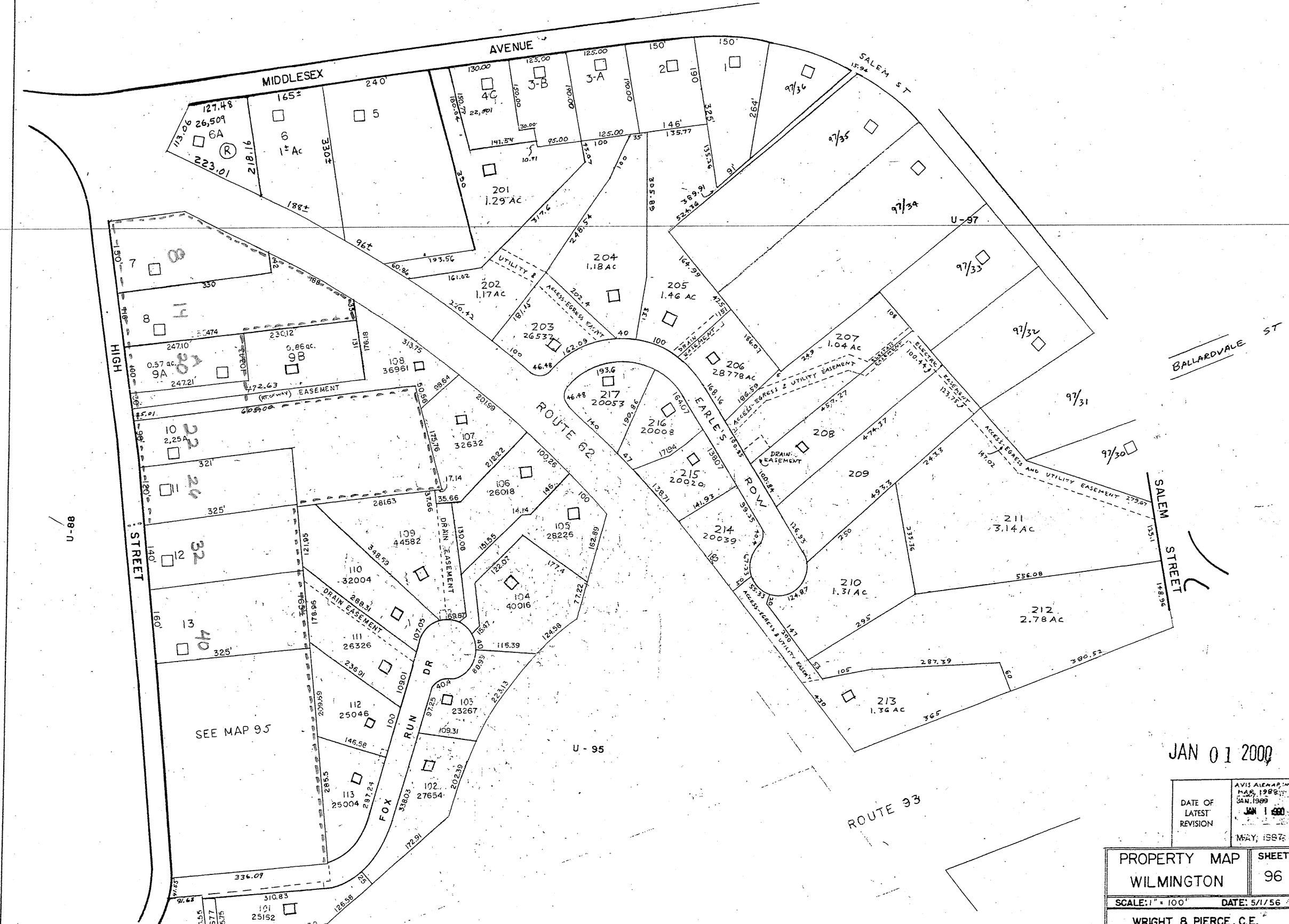
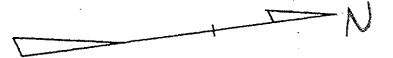


58 High Street
56 High Street at rear
Wilmington, Middlesex Co., MA
High Street Historic District
Photo # 8

7 635 PM
PAPER # 4
N-2 25 5609 2118/100

U-89

SALEM ST



HIGH STREET
HISTORIC DISTRICT

SCALE APPROX.
1" = 220'

NUMBERS INDICATE
STREET ADDRESSES

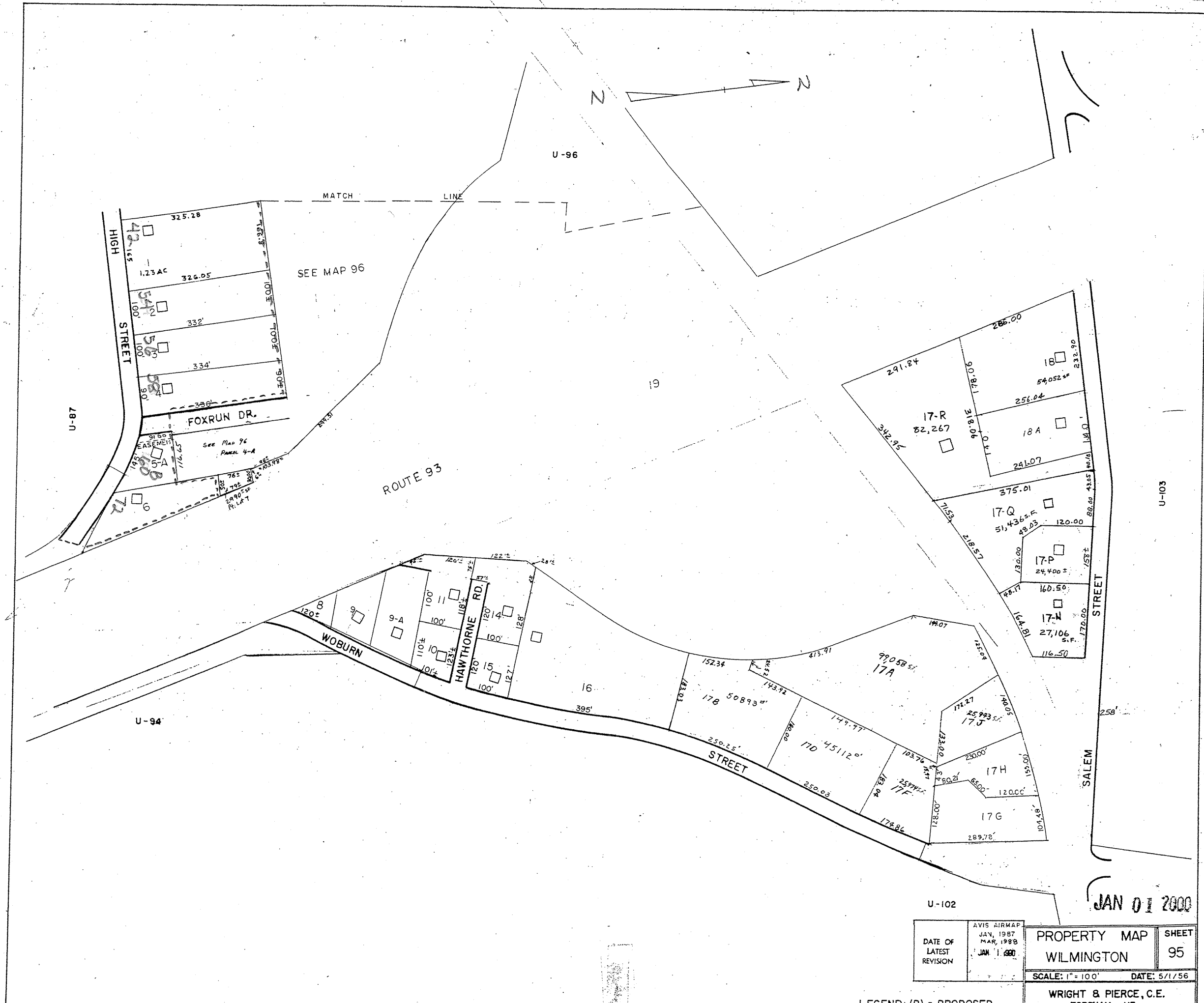
BOUNDARY = - - - - -

JAN 01 2000

DATE OF LATEST REVISION	AVIS ALLEN MAY 1986 JAN 1989 MAY 1987
-------------------------	--

PROPERTY MAP	SHEET
WILMINGTON	96
SCALE: 1" = 100'	DATE: 5/1/56
WRIGHT & PIERCE, C.E. TOPSHAM, ME.	

LEGEND: (P) = PROPOSED



HIGH STREET
HISTORIC DISTRICT

SCALE APPROX.
1" = 220'

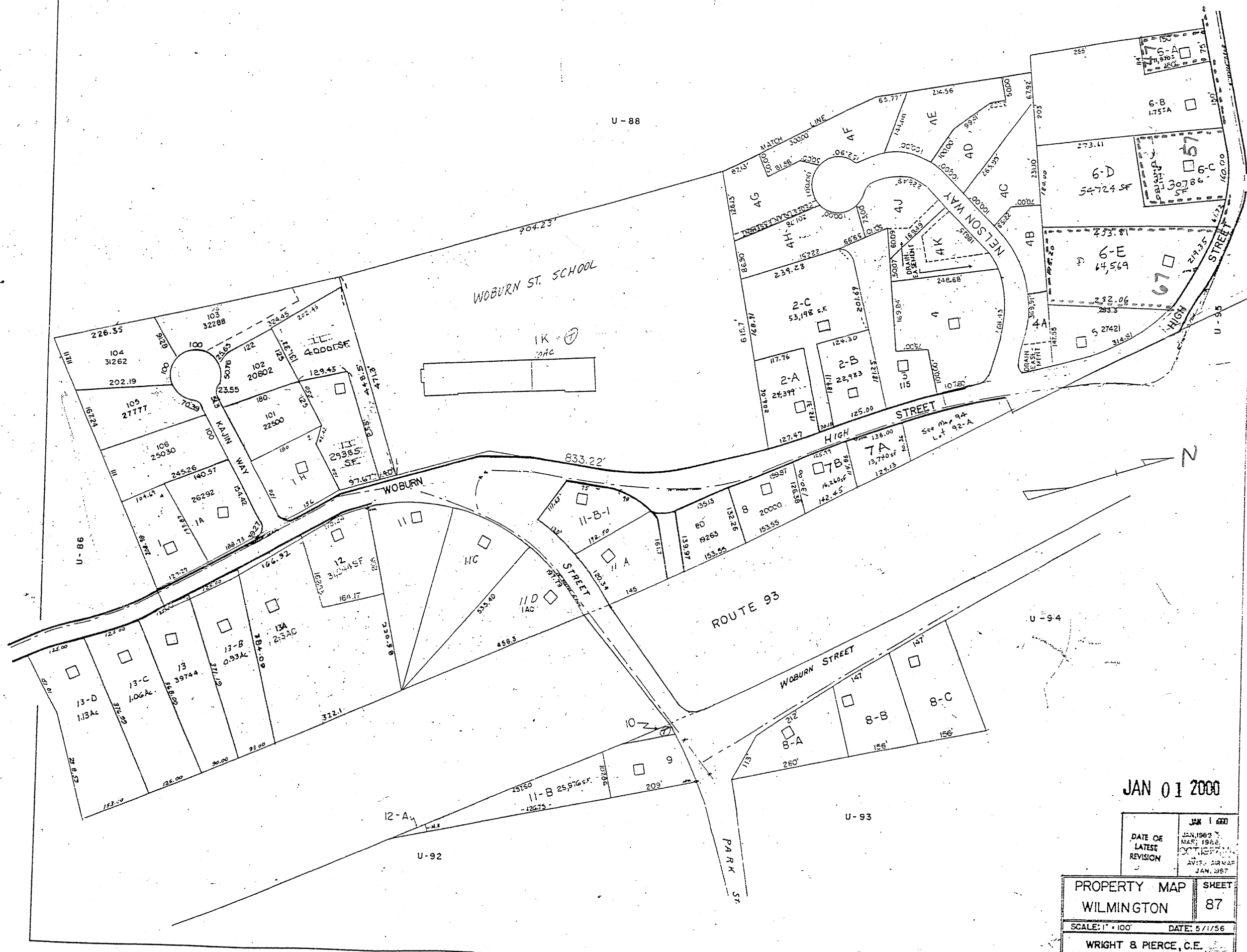
NUMBERS INDICATE
STREET ADDRESSES

BOUNDARY = - - - - -

JAN 01 2000

DATE OF LATEST REVISION	AVIS AIRMAP JAN 1987 MAR 1988 JAN 1990	PROPERTY MAP WILMINGTON	SHEET 95
SCALE: 1" = 100'		DATE: 5/1/56	

LEGEND: (P) = PROPOSED
WRIGHT & PIERCE, C.E.
TOPSHAM, ME.



HIGH STREET
HISTORIC DISTRICT

SCALE APPROX.
1" = 220'

NUMBERS INDICATE
STREET ADDRESSES

BOUNDARY = - - - - -

JAN 01 2000

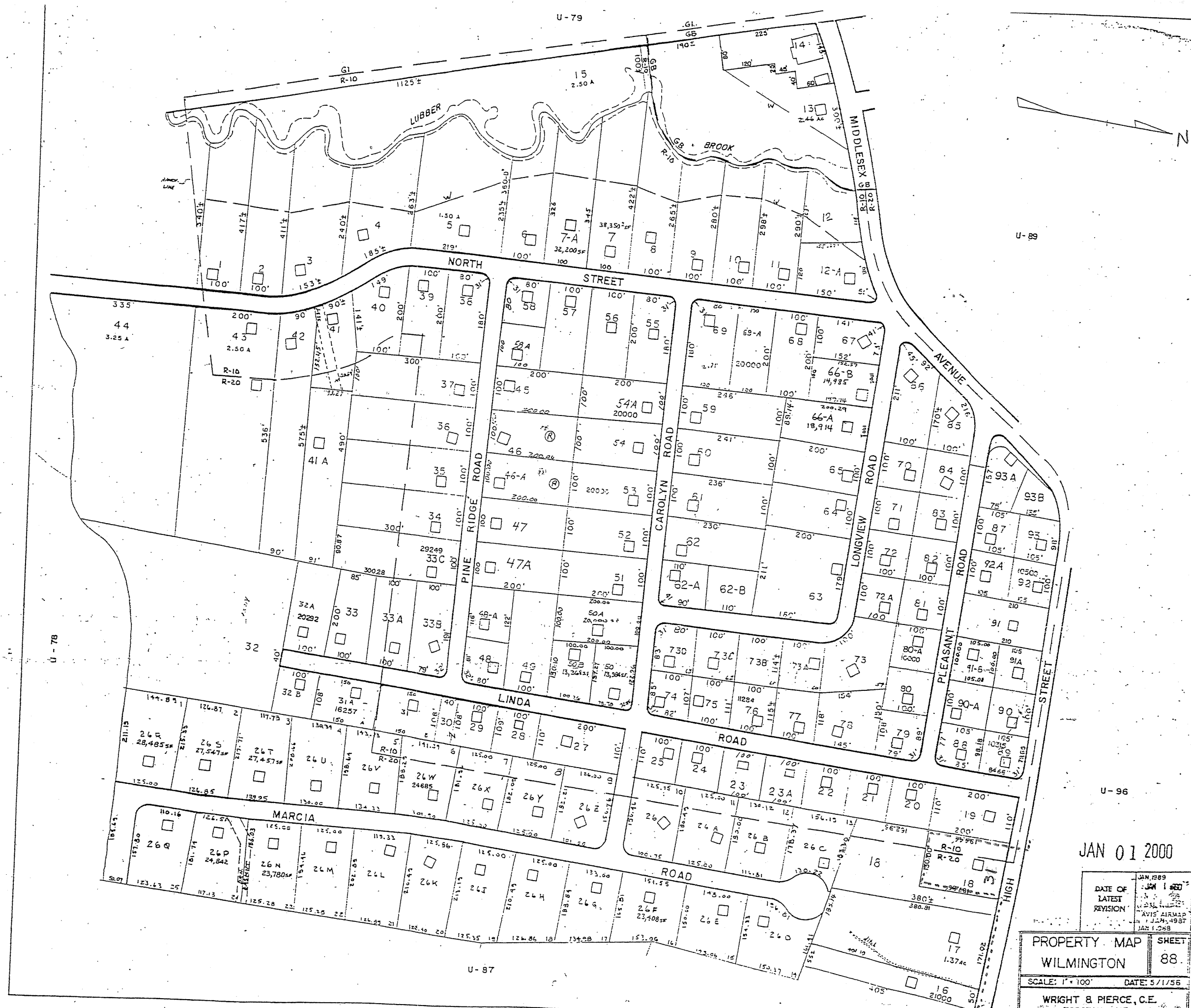
DATE OF LATEST REVISION	JAN 1 1980 MAY 1982 OCT 1987 JAN 1987
PROPERTY MAP	SHEET
WILMINGTON	87
SCALE: 1" = 100'	DATE: 5/1/56
WRIGHT & PIERCE, C.E. TOPSHAM, ME.	

HIGH STREET
HISTORIC DISTRICT

SCALE APPROX
1" = 220'

NUMBERS INDICATE
STREET NUMBERS

BOUNDARY = - - - - -



JAN 01 2000

DATE OF LATEST REVISION	JAN 1 2000
AVIS AIRMAP	124-4937
JAN 1 2000	

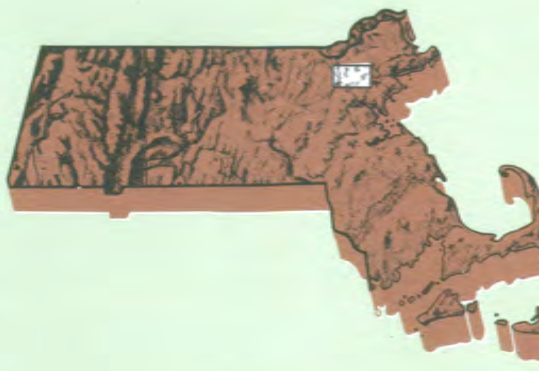
PROPERTY MAP SHEET
WILMINGTON 88

SCALE: 1" = 100' DATE: 5/1/56

WRIGHT & PIERCE, C.E.
TOPSHAM, ME.

Reading MASSACHUSETTS

1:25 000-scale metric topographic map



7.5 X 15 MINUTE QUADRANGLE SHOWING

- Contours and elevations in meters
- Highways, roads and other manmade structures
- Water features
- Woodland areas
- Geographic names



Produced by the United States Geological Survey in cooperation with Massachusetts Department of Public Works
 Control by USGS, NOS/NOAA, and Commonwealth of Massachusetts agencies
 Compiled by photogrammetric methods from aerial photographs taken 1978. Field checked 1979. Map edited 1987. Supersedes Wilmington 1965 and Reading 1966. 1:24,000-scale maps
 Projection and 1000-meter grid, zone 19 Universal Transverse Mercator
 10,000-foot grid ticks based on Massachusetts coordinate system, mainland zone. 1927 North American Datum
 To place on the predicted North American Datum 1983, move the projection lines 6 meters south and 41 meters west as shown by dashed corner ticks
 There may be private inholdings within the boundaries of the National or State reservations shown on this map

CONTOUR INTERVAL 3 METERS
 NATIONAL GEODETIC VERTICAL DATUM OF 1929
 CONTROL ELEVATIONS SHOWN TO THE NEAREST 0.1 METER
 OTHER ELEVATIONS SHOWN TO THE NEAREST 0.5 METER

THIS MAP COMPLIES WITH NATIONAL MAP ACCURACY STANDARDS

Meters	Feet
1	3.2808
2	6.5617
3	9.8425
4	13.1234
5	16.4042
6	19.6850
7	22.9659
8	26.2467
9	29.5276
10	32.8084

To convert meters to feet multiply by 3.2808
 To convert feet to meters multiply by 0.3048

Declination	Miles
1	1.6093
2	3.2186
3	4.8279
4	6.4372
5	8.0465
6	9.6558
7	11.2651
8	12.8744
9	14.4837
10	16.0930

UTM grid convergence (0 to 1000 meters east) Diagram is approximate

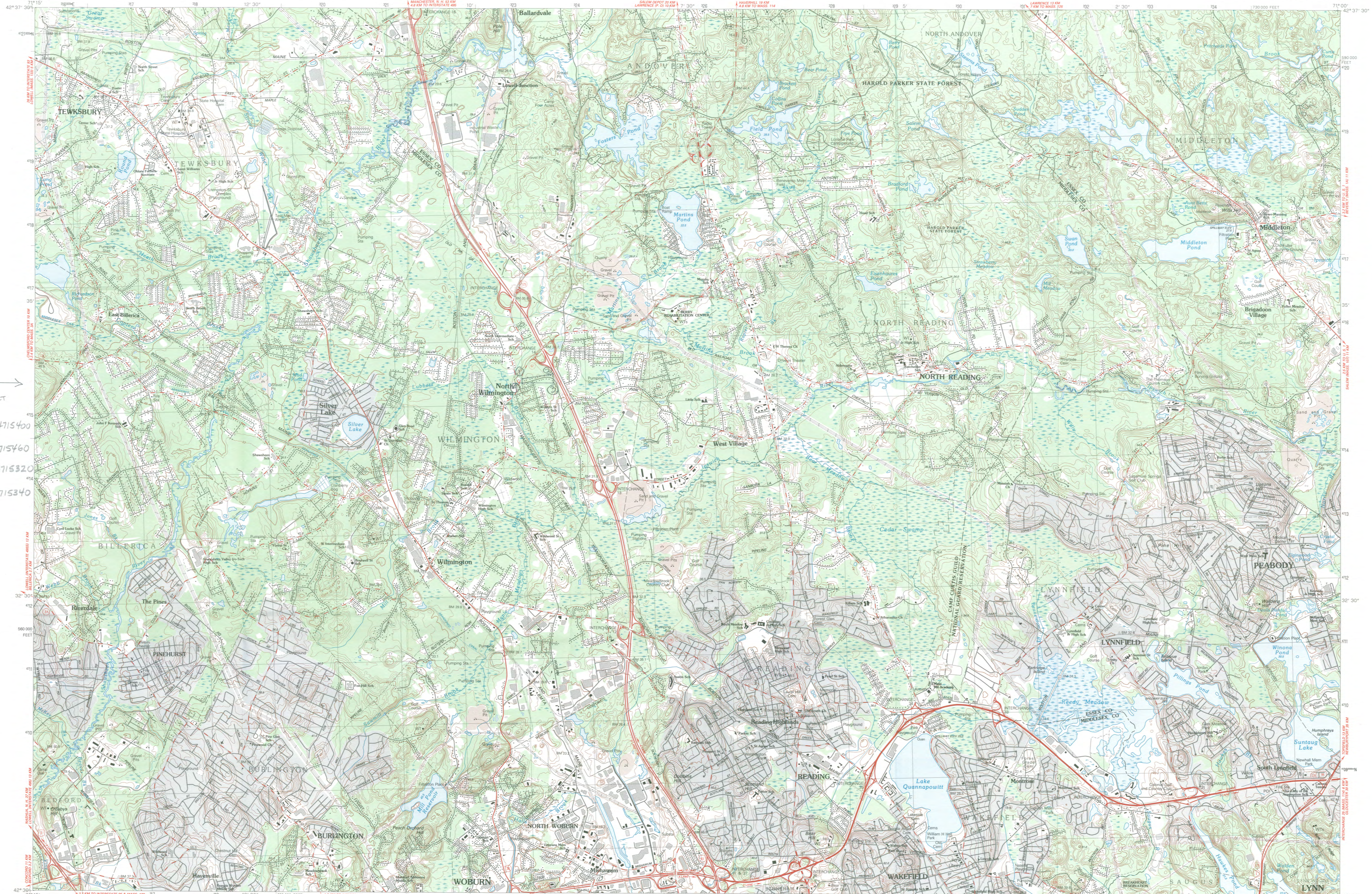
Adjoining Maps	1	2	3
1	Lowell	Lawrence	Ware
2	Lowell	Lawrence	Ware
3	Lowell	Lawrence	Ware
4	Lowell	Lawrence	Ware
5	Lowell	Lawrence	Ware
6	Lowell	Lawrence	Ware
7	Lowell	Lawrence	Ware
8	Lowell	Lawrence	Ware



Topographic Map Symbols

- Primary highway, hard surface
- Secondary highway, hard surface
- Light-duty road, hard or improved surface
- Unimproved road, trail
- Route marker: Interstate; U.S.; State
- Railroad: standard gauge; narrow gauge
- Bridge: drawbridge
- Footbridge; overpass; underpass
- Build-up area: only selected landmark buildings shown
- House; barn; church; school; large structure
- Boundary:
 - National, with monument
 - State
 - County, parish
 - City, township, precinct, district
 - Incorporated city, village, town
 - National or State reservation; small park
 - Land grant with monument; found section corner
 - U.S. public lands survey; range, township, section
 - Range, township, section line; location approximate
- Fence or field line
- Power transmission line, located tower
- Dam; dam with lock
- Canary; green
- Campground; picnic area; U.S. location monument
- Windmill; water well; spring
- Mine shaft; prospect; old or cave
- Control: horizon station; vertical surface spot elevation
- Contours: index; intermediate; supplementary; depression
- Distorted surface: strip mine; lava; sand
- Bathymetric contours: index; intermediate
- Personal lake and stream; intermittent lake and stream
- Rapids; large and small; falls, large and small
- Swamp; marsh
- Submerged marsh; land subject to controlled inundation
- Woodland: scattered trees
- Sand; mangrove
- Orchard; vineyard

A pamphlet describing topographic maps is available on request
 FOR SALE BY U.S. GEOLOGICAL SURVEY
 DENVER, COLORADO 80225, OR RESTON, VIRGINIA 22092



HIGH STREET HISTORIC DISTRICT
 1. 323000/4715400
 2. 323480/4715460
 3. 323500/4715320
 4. 323000/4715340



The Commonwealth of Massachusetts
William Francis Galvin, Secretary of the Commonwealth
Massachusetts Historical Commission

October 6, 2003

Ms. Carol Shull
National Register of Historic Places
Department of the Interior
National Park Service
1201 Eye Street, NW 8th floor
Washington, DC 20005

Dear Ms. Shull:

Enclosed please find the following nomination form:

High Street Historic District, Wilmington (Middlesex), MA

The nomination has been voted eligible by the State Review Board and has been signed by the State Historic Preservation Officer. The owners of the properties included in the district were notified of pending State Review Board consideration 30 to 45 days before the meeting and were afforded the opportunity to comment.

We request an expedited review of this nomination.

Sincerely,

A handwritten signature in cursive script that reads "Betsy Friedberg".

Betsy Friedberg
National Register Director
Massachusetts Historical Commission

enclosure

cc: Heli Meltsner, consultant
Kathleen Black Reynolds, Wilmington Historical Commission
Robert J. Cain, Wilmington Board of Selectmen
Lynn Duncan, Planning Director