



PHOTO 1

Historic

EAST BRIDGEPORT ~~NATIONAL~~
~~REGISTER~~ DISTRICT

BRIDGEPORT, CONNECTICUT
NORTH SIDE OF BARNUM AVENUE
LOOKING EAST FROM NOBLE
AVENUE

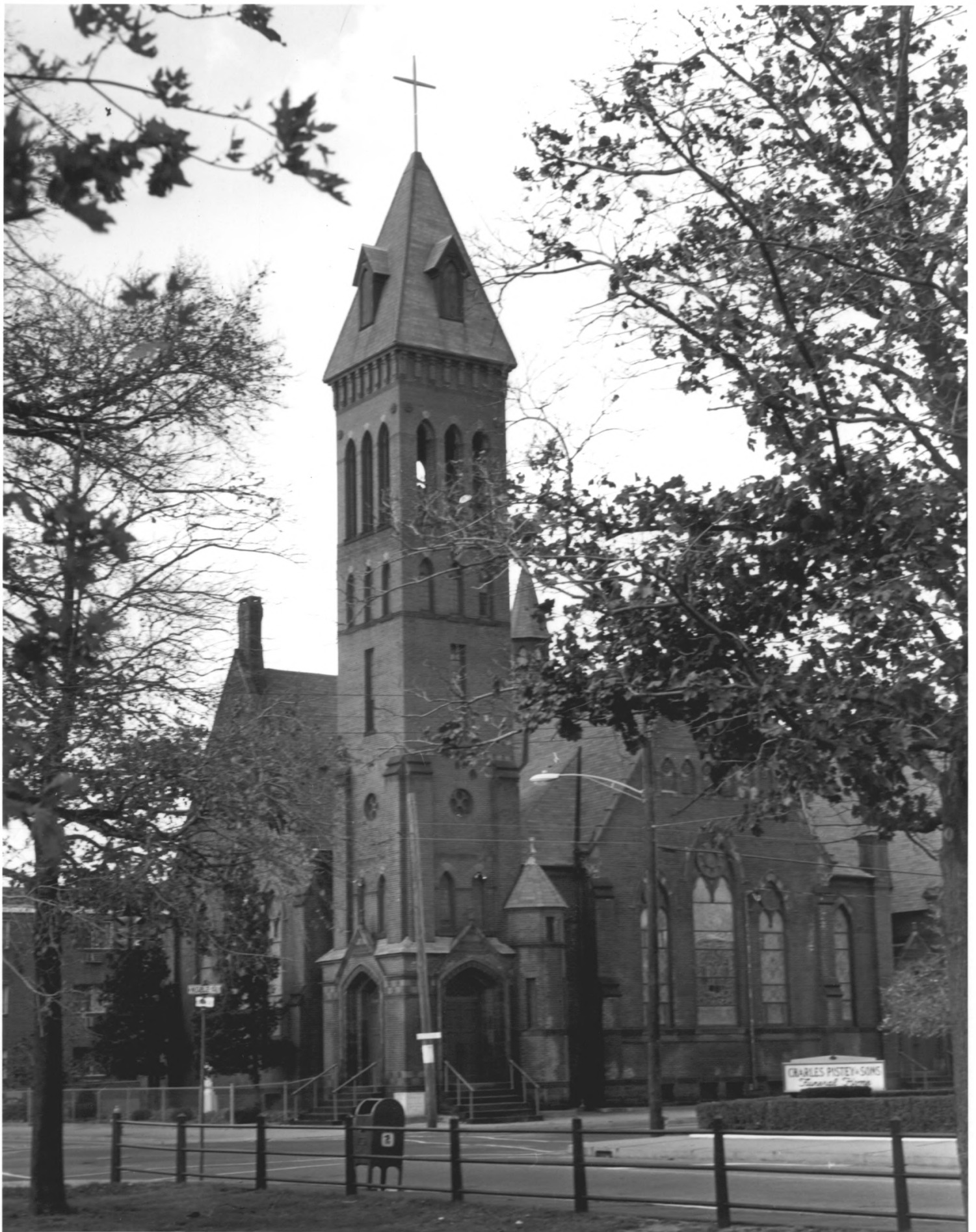
BRIGNOLO STUDIOS PHOTO
OCTOBER 1975

NEGATIVE ON FILE CONN.
HISTORICAL COMMISSION

Fairfield Co.

NOV 27 1978

APR 25 1979



CHARLES PISTENY-SOMI
Funeral Home

REAR
C-1

3

PHOTO 2

Historic

EAST BRIDGEPORT ~~NATIONAL~~

~~REGISTER~~ DISTRICT

BRIDGEPORT, CONNECTICUT

WASHINGTON PARK M.E. CHURCH

(1883), 235 BARNUM AVENUE

BRIGNOLO STUDIOS PHOTO

OCTOBER, 1975

NEGATIVE ON FILE CONN. HIS-

TORICAL COMMISSION

Fairfield Co.

APR 25 1979

NOV 27 1978



PHOTO #3

EAST BRIDGEPORT ~~NATIONAL~~
~~REGISTER~~ DISTRICT

BRIDGEPORT, CONNECTICUT
ISAAC SMITH HOUSE (1871)

255 BARNUM AVENUE

BRIGNOLO STUDIOS PHOTO

OCTOBER, 1975

NEGATIVE ON FILE CONN.

HISTORICAL COMMISSION

Fairfield Co.

NOV 27 1978

APR 25 1979



PHOTO 4

EAST BRIDGEPORT ~~NATIONAL~~

~~REGISTER~~ DISTRICT

BRIDGEPORT, CONNECTICUT

WESSELS-MORTON HOUSE (1869)

269-71 BARNUM AVENUE

BRIGNOLO STUDIOS PHOTO

OCTOBER 1975

NEGATIVE ON FILE CONN.

HISTORICAL COMMISSION

Fairfield Co.

NOV 27 1978

APR 25 1979

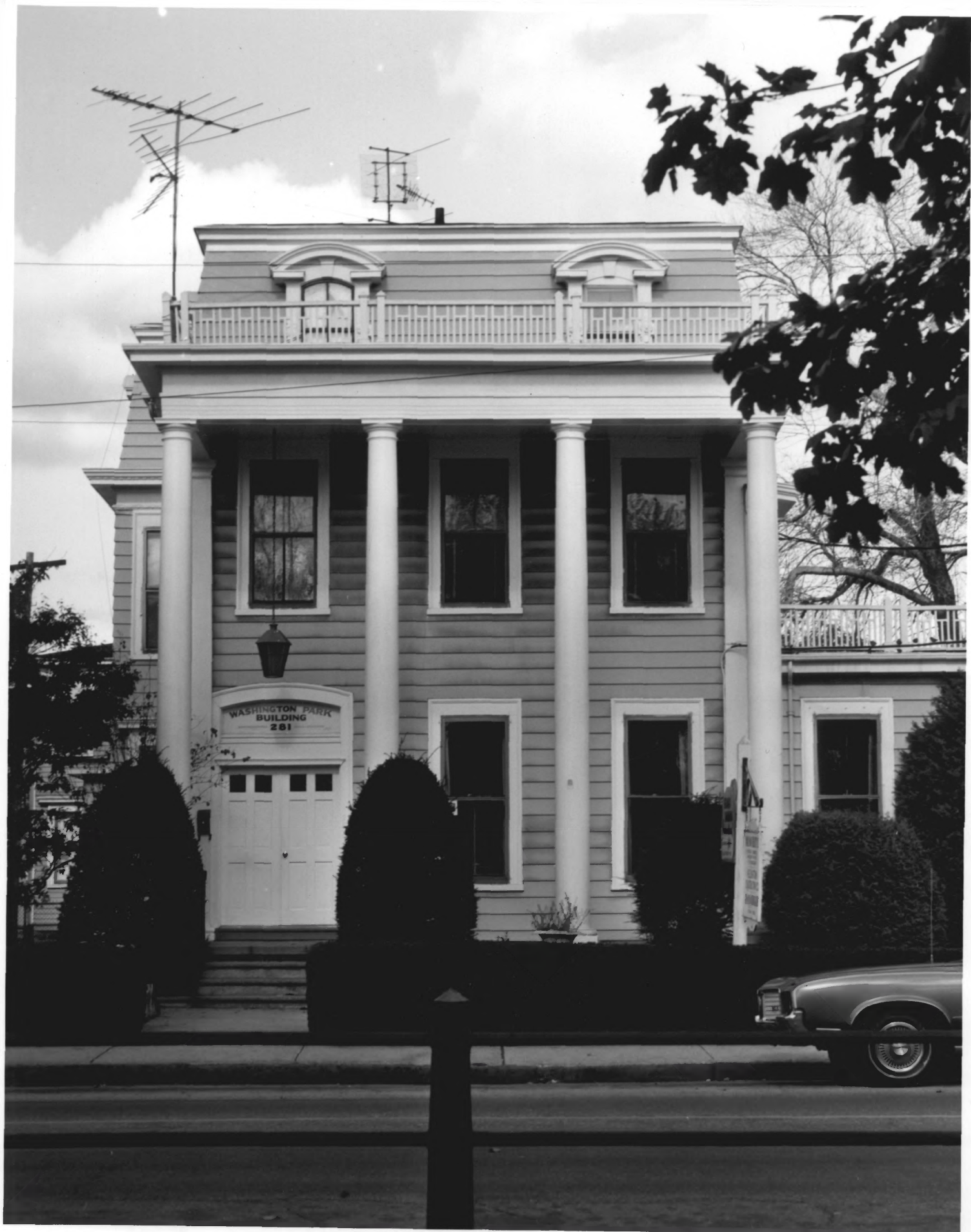


PHOTO 5
EAST BRIDGEPORT ~~NATIONAL~~
~~REGISTER~~ DISTRICT
BRIDGEPORT, CONNECTICUT
AUGUSTUS DUPEE HOUSE (1872)
281 BARNUM AVENUE
BRIGNOLO STUDIOS PHOTO
OCTOBER, 1975
NEGATIVE ON FILE CONN.
HISTORICAL COMMISSION

Fairfield Co.

NOV 27 1978

APR 25 1979



PHOTO 6

H13402PC

EAST BRIDGEPORT ~~NATIONAL~~
~~REGISTER~~ DISTRICT
BRIDGEPORT, CONNECTICUT
PARK STREET CONG. CHURCH
(1870), 301 BARNUM AVENUE
BRIGNOLO STUDIOS PHOTO
OCTOBER 1975
NEGATIVE ON FILE CONN.
HISTORICAL COMMISSION

NOV 27 1978

Fairfield Co.

APR 25 1979



PHOTO 7

Historic
EAST BRIDGEPORT ~~NATIONAL~~
~~REGISTER~~ DISTRICT
BRIDGEPORT, CONNECTICUT
PARK STREET CONG. CHURCH
(1870), 301 BARNUM AVENUE
BRIGNOLO STUDIOS PHOTO
OCTOBER, 1975
NEGATIVE ON FILE CONN.
HISTORICAL COMMISSION

Fairfield Co.

NOV 27 1978

APR 25 1979



Elect **PAUL ARNOLD**
REPUBLICAN ALDERMAN 137-DIST
"A Young Man Who Cares About You"

the only car insurance
PANUZIO

PHOTO 8

Historic
EAST BRIDGEPORT ~~NATIONAL~~
~~REGISTER~~ DISTRICT

BRIDGEPORT, CONNECTICUT
GEORGE RICHARDSON HOUSE
(1887), 331 BARNUM AVENUE
BRIGNOLO STUDIOS PHOTO
OCTOBER 1975

NEGATIVE ON FILE CONN.
HISTORICAL COMMISSION

Fairfield Co.

APR 25 1979

NOV 27 1978



PHOTO 9

Historic
EAST BRIDGEPORT ~~NATIONAL~~
~~REGISTER~~ DISTRICT
BRIDGEPORT, CONNECTICUT
CLAUDIUS R. HAYWARD HOUSE
(1869), 361 BARNUM AVENUE
BRIGNOLO STUDIOS PHOTO
OCTOBER, 1975
NEGATIVE ON FILE CONN.
HISTORICAL COMMISSION

Saunders Co.

NOV 27 1978

APR 25 1979



FOR SALE
CALL THE HOMES
BUYERS GROUP
275-1100

PHOTO 10

EAST BRIDGEPORT ~~NATIONAL~~
~~REGISTER~~ DISTRICT

BRIDGEPORT, CONNECTICUT

DANIEL MARSH ROW (1882)

374-86 BARNUM AVENUE

BRIGNOLO STUDIOS PHOTO

OCTOBER 1975

NEGATIVE ON FILE CONN.

HISTORICAL COMMISSION

Fairfield Co.

NOV 27 1978

APR 25 1979

WASHINGTON PARK
1865
5 ACRES
BD. OF PARK COMMISSIONERS
CITY OF BRIDGEPORT

WNAB

phone



PHOTO 11

Historic
EAST BRIDGEPORT ~~NATIONAL~~
~~REGISTER~~ DISTRICT
BRIDGEPORT, CONNECTICUT
SONS OF ITALY CLUB (1936)
474 EAST WASHINGTON AVENUE
BRIGNOLO STUDIOS PHOTO
OCTOBER, 1975
NEGATIVE ON FILE CONN.
HISTORICAL COMMISSION

Fairfield Co.

25 1979



PHOTO 12

Historic

EAST BRIDGEPORT ~~NATIONAL~~
~~REGISTER~~ DISTRICT
BRIDGEPORT, CONNECTICUT
EDWARD FITZGERALD HOUSE
(1893)

480 EAST WASHINGTON AVENUE
BRIGNOLO STUDIOS PHOTO
OCTOBER, 1975
NEGATIVE ON FILE CONN.
HISTORICAL COMMISSION

Sanfield Co.

NOV 27 1978

APR 25 1979



PHOTO 13

EAST BRIDGEPORT ~~NATIONAL~~

~~REGISTER~~ DISTRICT

BRIDGEPORT, CONNECTICUT

GEORGE & JOSEPH IRVING

HOUSE (1851-5)

496 EAST WASHINGTON AVENUE

BRIGNOLO STUDIOS PHOTO

OCTOBER, 1975

NEGATIVE ON FILE CONN.

HISTORICAL COMMISSION

Fairfield Co.

NOV 27 1978

APR 25 1979



Historic

PHOTO 14

EAST BRIDGEPORT ~~NATIONAL~~

~~REGISTER~~ DISTRICT

BRIDGEPORT, CONNECTICUT

P.L. PERRY HOUSE (1865)

512 EAST WASHINGTON AVENUE

BRIGNOLO STUDIOS PHOTO

OCTOBER 1975

NEGATIVE ON FILE CONN.

HISTORICAL COMM.

Fairfield Co.

NOV 27 1978

25 1979



PHOTO 15

EAST BRIDGEPORT ~~NATIONAL~~
~~REGISTER~~ DISTRICT

BRIDGEPORT, CONNECTICUT
FITZGERALD-HOTCHKISS-
SHERWOOD ROW (1882), 526-
534 EAST WASHINGTON AVENUE
BRIGNOLO PHOTO STUDIOS
OCTOBER 1975
NEGATIVE ON FILE CONN.
HISTORICAL COMMISSION

Fairfield Co.

NOV 27 1978

APR 25 1979



PHOTO 16

EAST BRIDGEPORT ~~NATIONAL~~
~~REGISTER~~ DISTRICT

BRIDGEPORT, CONNECTICUT

BETHESDA MISSION (1866)

564 EAST WASHINGTON AVENUE

BRIGNOLO STUDIOS PHOTO

OCTOBER 1975

NEGATIVE ON FILE CONN.

HISTORICAL COMMISSION

Fairfield Co,

NOV 27 1978

APR 25 1979



YOUTH FOR
PANUZIO
For Organization with
People of Panuzio Corner Store

PARKVIEW CORNER STORE



PARKVIEW CORNER STORE

PHOTO 17

EAST BRIDGEPORT ~~NATIONAL~~
~~REGISTER~~ DISTRICT

BRIDGEPORT, CONNECTICUT
JOHN BARR HOUSE (1851-5)
570 EAST WASHINGTON AVENUE
BRIGNOLO STUDIOS PHOTO
OCTOBER 1975
NEGATIVE ON FILE CONN.
HISTORICAL COMMISSION

Fairfield Co.

NOV 27 1978

APR 25 1979



Brignolo PHOTOGRAPHER

PHOTO 18

EAST BRIDGEPORT ~~NATIONAL~~
~~REGISTER~~ DISTRICT

BRIDGEPORT, CONNECTICUT
EAST SIDE OF KOSSUTH STREET
LOOKING SOUTH FROM BARNUM
AVENUE

BRIGNOLO STUDIOS PHOTO
OCTOBER 1975

NEGATIVE ON FILE CONN.
HISTORICAL COMMISSION

Fairfield Co.

NOV 27 1978



PHOTO 19

EAST BRIDGEPORT ~~NATIONAL~~
Historic
~~REGISTER DISTRICT~~

BRIDGEPORT, CONNECTICUT
APARTMENT HOUSE (1915)

554-6 KOSSUTH STREET
BRIGNOLO STUDIOS PHOTO
OCTOBER 1975

NEGATIVE ON FILE CONN.
HISTORICAL COMMISSION

Fairfield
C. J.

25 1979

NOV 27 1978



Historic

PHOTO 20
EAST BRIDGEPORT NATIONAL
~~REGISTER~~ DISTRICT
BRIDGEPORT, CONNECTICUT
APARTMENT HOUSE (1915)
564 KOSSUTH STREET
BRIGNOLO STUDIOS PHOTO
OCTOBER, 1975
NEGATIVE ON FILE CONN.
HISTORICAL COMMISSION

*Fairfield
Co.*

APR 25 1979

NOV 27 1978



PHOTO 22

Historic
EAST BRIDGEPORT ~~NATIONAL~~
~~REGISTER~~ DISTRICT
BRIDGEPORT, CONNECTICUT
CURTIS-CHAMBERLAIN-SHERMAN
ROW (1889)

580-4 KOSSUTH STREET
BRIGNOLO STUDIOS PHOTO
OCTOBER 1975
NEGATIVE ON FILE CONN.
HISTORICAL COMMISSION

Sanfield APR 25 1979
Co, NOV 27 1978



PHOTO 23

Historic

EAST BRIDGEPORT ~~NATIONAL~~
~~REGISTER~~ DISTRICT

BRIDGEPORT, CONNECTICUT
ST. PAUL'S RECTORY (1868)

592 KOSSUTH STREET
BRIGNOLO STUDIOS PHOTO
OCTOBER 1975

NEGATIVE ON FILE CONN.
HISTORICAL COMMISSION

Fairfield Co.

NOV 27 1978

APR 25 1979

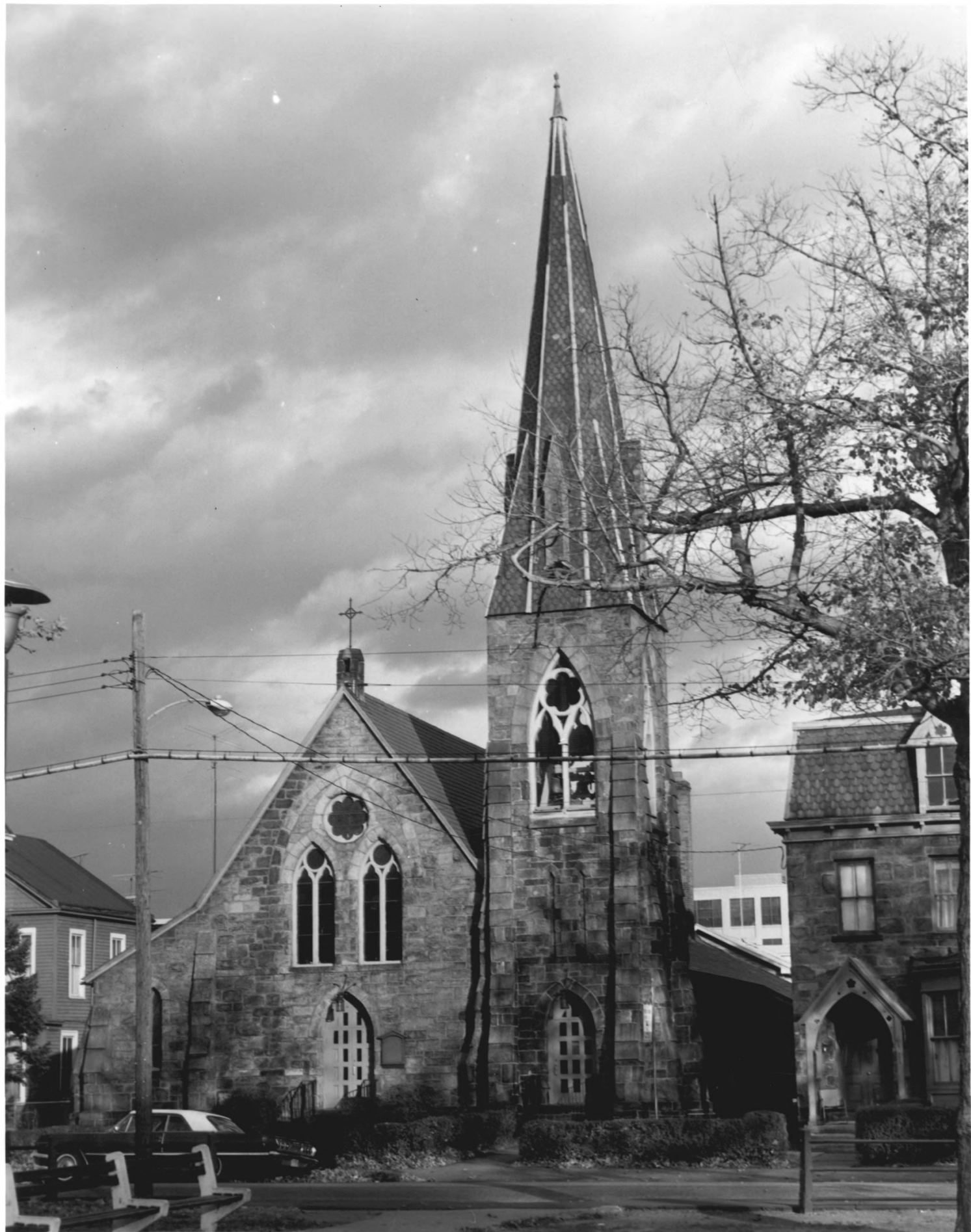


PHOTO 24

Historic
EAST BRIDGEPORT ~~NATIONAL~~
~~REGISTER~~ DISTRICT
BRIDGEPORT, CONNECTICUT
ST. PAUL'S EPISC. CHURCH
(1868)

598 KOSSUTH STREET
BRIGNOLO STUDIOS PHOTO
OCTOBER 1975
NEGATIVE ON FILE CONN.
HISTORICAL COMMISSION

Fairfield Co.

NOV 27 1978

JPR
25 1979



PHOTO 25

Historic

EAST BRIDGEPORT ~~NATIONAL~~
~~REGISTER-DISTRICT~~

BRIDGEPORT, CONNECTICUT
WILLIAM & STEPHEN CONGER
HOUSE (1854)

616-18 KOSSUTH STREET
BRIGNOLO STUDIOS PHOTO
OCTOBER 1975

NEGATIVE ON FILE CONN.
HISTORICAL COMMISSION

Fairfield Co.

NOV 27 1978

APR 25 1979



PHOTO 26

Historic
EAST BRIDGEPORT ~~NATIONAL~~
~~REGISTER~~ DISTRICT

BRIDGEPORT, CONNECTICUT
ORANGE MERWIN HOUSE (1882)

630 KOSSUTH STREET
BRIGNOLO STUDIOS PHOTO
OCTOBER, 1975

NEGATIVE ON FILE CONN.
HISTORICAL COMMISSION

Fairfield Co.

APR 25 1979

NOV 27 1978



BRIGNOLO • PHOTOGRAPHER



PHOTO 27

EAST BRIDGEPORT ~~NATIONAL~~
~~REGISTER~~ DISTRICT

BRIDGEPORT, CONNECTICUT
DANIEL E. MARSH HOUSE (1881)

632 KOSSUTH STREET
BRIGNOLO STUDIOS PHOTO
OCTOBER, 1975

NEGATIVE ON FILE CONN.
HISTORICAL COMMISSION

Fairfield Co.

APR 25 1979

NOV 27 1978

Historic



PHOTO 28

Historic
EAST BRIDGEPORT ~~NATIONAL~~
~~REGISTER~~ DISTRICT
BRIDGEPORT, CONNECTICUT
WEST SIDE OF NOBLE AVENUE
LOOKING SOUTH FROM BARNUM
AVENUE

BRIGNOLO STUDIOS PHOTO
OCTOBER 1975

NEGATIVE ON FILE CONN.
HISTORICAL COMMISSION

Sainfield Co.
NOV 27 1978



W 10th St
N 10th St



PHOTO 29

Historic
EAST BRIDGEPORT ~~NATIONAL~~
~~REGISTER~~ DISTRICT
BRIDGEPORT, CONNECTICUT
SHELDON MORRIS HOUSE (1858)

303 NOBLE AVENUE

BRIGNOLO STUDIOS PHOTO

OCTOBER 1975

NEGATIVE ON FILE CONN.

HISTORICAL COMMISSION

Fairfield Co.

NOV 27 1978

APR 25 1979



PHOTO 30

EAST BRIDGEPORT ~~NATIONAL~~ *Historic*

~~REGISTER~~ DISTRICT

BRIDGEPORT, CONNECTICUT

WILLIAM H. PERRY HOUSE

(1857)

335 NOBLE AVENUE

BRIGNOLO STUDIOS PHOTO

OCTOBER, 1975

NEGATIVE ON FILE CONN.

HISTORICAL COMMISSION

Fairfield APR 25 1979

Co. NOV 27 1978



PHOTO 31

EAST BRIDGEPORT ~~NATIONAL~~
~~REGISTER~~ DISTRICT

BRIDGEPORT, CONNECTICUT

HURD-LOCKWOOD HOUSE (1855-7
and 1888)

349-55 NOBLE AVENUE

BRIGNOLO STUDIOS PHOTO

OCTOBER 1975

NEGATIVE ON FILE CONN.

HISTORICAL COMMISSION

Sanfield Co.

APR 25 1979

NOV 27 1978



PHOTO 32

Historic

EAST BRIDGEPORT ~~NATIONAL~~
~~REGISTER~~ DISTRICT
BRIDGEPORT, CONNECTICUT
S.C. KINGMAN HOUSE (1870)
373 NOBLE AVENUE
BRIGNOLO STUDIOS PHOTO
OCTOBER 1975
NEGATIVE ON FILE CONN.
HISTORICAL COMMISSION

Sanfield
Co.

APR 25 1979

NOV 27 1978



PHOTO 33

EAST BRIDGEPORT ~~NATIONAL~~

~~REGISTER~~ DISTRICT

BRIDGEPORT, CONNECTICUT

ISAAC KEELER HOUSE (1851-5)

385-7 NOBLE AVENUE

BRIGNOLO STUDIOS PHOTO

OCTOBER 1975

NEGATIVE ON FILE CONN.

HISTORICAL COMMISSION

Lustone
Sanfield Co.
APR 25 1979

NOV 27 1978



Historic

PHOTO 34
EAST BRIDGEPORT ~~NATIONAL~~
~~REGISTER~~ DISTRICT
BRIDGEPORT, CONNECTICUT
MOSES REDSHAW HOUSE (1887)
401 NOBLE AVENUE
BRIGNOLO STUDIOS PHOTO
OCTOBER 1975
NEGATIVE ON FILE CONN.
HISTORICAL COMMISSION

Fairfield Co.

NOV 27 1978

APR 25 1979



PHOTO 35

EAST BRIDGEPORT ~~NATIONAL~~

~~REGISTER~~ DISTRICT

BRIDGEPORT, CONNECTICUT

ELI DEWHIRST HOUSE (1886)

409 NOBLE AVENUE

BRIGNOLO STUDIOS PHOTO

OCTOBER 1975

NEGATIVE ON FILE CONN.

HISTORICAL COMMISSION

Historic
Fairfield Co.

NOV 27 1978

APR 25 1979



PHOTO 36

Historic

EAST BRIDGEPORT ~~NATIONAL~~
~~REGISTER~~ DISTRICT
BRIDGEPORT, CONNECTICUT
WASHINGTON PARK LOOKING
SOUTHWEST FROM INTERSECTION
OF BARNUM AVENUE AND KOSSUTH
STREET

BRIGNOLO STUDIOS PHOTO
OCTOBER 1975
NEGATIVE ON FILE CONN.
HISTORICAL COMMISSION

Fairfield APR 25 1979

County NOV 27 1978



PHOTO 37

EAST BRIDGEPORT ~~NATIONAL~~

~~REGISTER~~ DISTRICT

BRIDGEPORT, CONNECTICUT

WASHINGTON PARK M.E. CHURCH

235 BARNUM AVENUE

SOUTH FRONT ELEVATION

BRIGNOLO STUDIOS PHOTO

OCTOBER 1975

NEGATIVE ON FILE CONN.

HISTORICAL COMMISSION

Sanfield Co.
APR 25 1979

NOV 27 1978



PHOTO 38

Historic

EAST BRIDGEPORT ~~NATIONAL~~
REGISTER DISTRICT
BRIDGEPORT, CONNECTICUT
WASHINGTON PARK BANDSTAND
(1884)

BRIGNOLO STUDIOS PHOTO
OCTOBER 1975
NEGATIVE ON FILE CONN.
HISTORICAL COMMISSION

Fairfield Co.

APR 25 1979

NOV 27 1978



PHOTO 39

Historic

EAST BRIDGEPORT ~~NATIONAL~~
~~REGISTER~~ DISTRICT
BRIDGEPORT, CONNECTICUT
WEST SIDE OF WILLIAM STREET
LOOKING SOUTH FROM EAST
WASHINGTON AVENUE, SHOWING
99-115 WILLIAM STREET
(1884) IN FOREGROUND
C. BRILVITCH PHOTO
FEBRUARY 1978
NEGATIVE ON FILE CONN.
HISTORICAL COMMISSION

Sanfield Co.

NOV 27 1978

25

PHOTO 39



PHOTO 40

Historic

PHOTO 40
EAST BRIDGEPORT ~~NATIONAL~~
~~REGISTER~~ DISTRICT
BRIDGEPORT, CONNECTICUT
CALVIN LINES HOUSE (1872)
301 ARCTIC STREET
C. BRILVITCH PHOTO
FEBRUARY 1978
NEGATIVE ON FILE CONN.
HISTORICAL COMMISSION

Sanfield
Co.

NOV 27 1978

APR 25 1979



MAPLE ST
WILLIAM ST

PHOTO 41

Historic
EAST BRIDGEPORT ~~NATIONAL~~
~~REGISTER~~ DISTRICT

BRIDGEPORT, CONNECTICUT

EDWIN L. SIMPSON HOUSE (1862-
1865), 315 WILLIAM STREET

C. BRILVITCH PHOTO

FEBRUARY 1978

NEGATIVE ON FILE CONN.

HISTORICAL COMMISSION

Fairfield Co.

NOV 27 1978

APR 25 1979

PHOTO 41



PHOTO 42

PHOTO 42

Historic
EAST BRIDGEPORT ~~NATIONAL~~

~~REGISTER~~ DISTRICT

BRIDGEPORT, CONNECTICUT

ISAAC N. FORRESTER HOUSE

(1869)

167-73 MAPLE STREET

C. BRILVITCH PHOTO

FEBRUARY 1978

NEGATIVE ON FILE CONN.

HISTORICAL COMMISSION

Sanfield Co.

NOV 27 1978

ADD 25 1979



PHOTO 43

EAST BRIDGEPORT ^{Historic} ~~NATIONAL~~

~~REGISTER~~ DISTRICT

BRIDGEPORT, CONNECTICUT

ARMSTRONG MILL WORKERS'

HOUSING (1896)

237-59 WILLIAM STREET

C. BRILVITCH PHOTO

FEBRUARY 1978

NEGATIVE ON FILE CONN.

HISTORICAL COMMISSION

Fairfield Co.

NOV 27 1978

APR 25 1979

PHOTO 43



PHOTO 44

Historic
EAST BRIDGEPORT ~~NATIONAL~~

~~REGISTER~~ DISTRICT

BRIDGEPORT, CONNECTICUT

FRANK ARMSTRONG HOUSE (1872)

272 WILLIAM STREET

C. BRILVITCH PHOTO

FEBRUARY 1978

NEGATIVE ON FILE CONN.

HISTORICAL COMMISSION

NOV 27 1978

Sanfield Co.

APR 25 1979

Photo 44



PHOTO 45
EAST BRIDGEPORT ^{Historic} ~~NATIONAL~~
~~REGISTER~~ DISTRICT
BRIDGEPORT, CONNECTICUT
CHARLES H. HAWLEY HOUSE
(circa 1890)
293-5 WILLIAM STREET
C. BRILVITCH PHOTO
FEBRUARY 1978
NEGATIVE ON FILE CONN.
HISTORICAL COMMISSION

Fairfield County

NOV 27 1978
APR 25 1979

PHOTO 45



PHOTO 46

PHOTO 46
EAST BRIDGEPORT ^{Historic} NATIONAL
REGISTER DISTRICT
BRIDGEPORT, CONNECTICUT
ARMSTRONG MILL WORKERS'
HOUSES (1886)--NORTH SIDE
OF ARMSTRONG PLACE LOOKING
EAST FROM KNOWLTON STREET
C. BRILVITCH PHOTO
FEBRUARY 1978
NEGATIVE ON FILE CONN.
HISTORICAL COMMISSION 209 1979

Fairfield County
NOV 27 1978



PHOTO 47
EAST BRIDGEPORT NATIONAL
REGISTER DISTRICT
BRIDGEPORT, CONNECTICUT
EAST SIDE OF WILLIAM STREET
LOOKING SOUTH, SHOWING CHAR-
LOTTE (FOREGROUND) AND
GEORGE APARTMENT HOUSES
(1889), 176-8 AND 162-4
WILLIAM STREET
C. BRILVITCH PHOTO
FEBRUARY 1978
NEGATIVE ON FILE CONN.
HISTORICAL COMMISSION

Historic

Fairfield County

APR 25 1979
NOV 27 1978

Photo 47



PARK CITY SUPPLY
VALVES **PIPE** FITTINGS



PHOTO 48

PHOTO 48

Historic

EAST BRIDGEPORT ~~NATIONAL~~
REGISTER DISTRICT
BRIDGEPORT, CONNECTICUT
PEQUONNOCK RIVER FRONT
LOOKING NORTH FROM CONGRESS
STREET BRIDGE
C. BRILVITCH PHOTO
FEBRUARY 1978
NEGATIVE ON FILE CONN.
HISTORICAL COMMISSION

Fairfield County APR 25 1979

NOV 27 1978



PHOTO 49

Historic
EAST BRIDGEPORT ~~NATIONAL~~
REGISTER DISTRICT
BRIDGEPORT, CONNECTICUT
KNOWLTON STREET LOOKING
NORTH FROM CONGRESS STREET
C. BRILVITCH PHOTO
FEBRUARY 1978
NEGATIVE ON FILE CONN.
HISTORICAL COMMISSION

Fairfield County APR 25 1979

NOV 27 1978

PHOTO 49



PHOTO 50

Historic
EAST BRIDGEPORT ~~NATIONAL~~
REGISTER DISTRICT
BRIDGEPORT, CONNECTICUT
ARMSTRONG MILL (1883)
285-305 KNOWLTON STREET
C. BRILVITCH PHOTO
FEBRUARY 1978
NEGATIVE ON FILE CONN.
HISTORICAL COMMISSION

Fairfield County APR 25 1979

NOV 27 1978

PHOTO 50