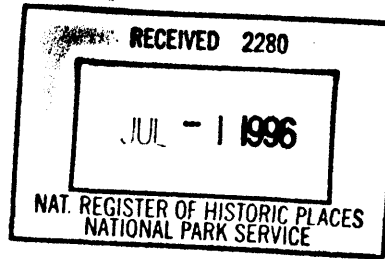


United States Department of the Interior  
National Park Service



National Register of Historic Places  
Registration Form

This form is for use in nominating or requesting determinations for individual properties and districts. See instructions in *How to Complete the National Register of Historic Places Registration Form* (National Register Bulletin 16A). Complete each item by marking "x" in the appropriate box or by entering the information requested. If an item does not apply to the property being documented, enter "N/A" for "not applicable." For functions, architectural classification, materials, and areas of significance, enter only categories and subcategories from the instructions. Place additional entries and narrative items on continuation sheets (NPS Form 10-900a). Use a typewriter, word processor, or computer, to complete all items.

1. Name of Property

historic name Lutz Elementary School, Old

other names/site number Old Lutz Schoolhouse/8HI1062

2. Location

street & number 18819 U.S. Highway 41 North n/a  not for publication

city or town Lutz n/a  vicinity

state Florida code FL county Hillsborough code 057 zip code 33549

3. State/Federal Agency Certification

As the designated authority under the National Historic Preservation Act, as amended, I hereby certify that this  nomination  request for determination of eligibility meets the documentation standards for registering properties in the National Register of Historic Places and meets the procedural and professional requirements set forth in 36 CFR Part 60. In my opinion, the property  meets  does not meet the National Register criteria. I recommend that this property be considered significant  nationally  statewide  locally. ( See continuation sheet for additional comments.)

Suzanne P. Walker / Deputy SHPO 6/26/96  
Signature of certifying official/Title Date

Florida State Historic Preservation Officer, Division of Historical Resources  
State of Federal agency and bureau

In my opinion, the property  meets  does not meet the National Register criteria. ( See continuation sheet for additional comments.)

Signature of certifying official/Title Date

State or Federal agency and bureau

4. National Park Service Certification

I hereby certify that the property is:

- entered in the National Register.  
 See continuation sheet.
- determined eligible for the National Register  
 See continuation sheet.
- determined not eligible for the National Register.
- removed from the National Register.
- other, (explain:)

for Signature of the Keeper  
Alma J. M. [Signature]

Date of Action

8/15/96

Lutz Elementary School, Old

Name of Property

Hillsborough Co., FL

County and State

**5. Classification**

**Ownership of Property**  
(Check as many boxes as apply)

- private
- public-local
- public-State
- public-Federal

**Category of Property**  
(Check only one box)

- building(s)
- district
- site
- structure
- object

**Number of Resources within Property**  
(Do not include previously listed resources in the count.)

Contributing	Noncontributing	
1	0	buildings
0	0	sites
0	0	structures
0	0	objects
1	0	Total

**Name of related multiple property listing**  
(Enter "N/A" if property is not part of a multiple property listing.)

n/a

**Number of contributing resources previously listed in the National Register**

0

**6. Function or Use**

**Historic Functions**  
(Enter categories from instructions)

Education: School

**Current Functions**  
(Enter categories from instructions)

Social: Meeting Hall

Recreation & Culture: Museum

**7. Description**

**Architectural Classification**  
(Enter categories from instructions)

Late 19 & 20th Century Revivals:

Colonial Revival

**Materials**  
(Enter categories from instructions)

foundation Concrete

walls Brick

roof Asphalt

other Wood

**Narrative Description**

(Describe the historic and current condition of the property on one or more continuation sheets.)

**8. Statement of Significance**

**Applicable National Register Criteria**

(Mark "x" in one or more boxes for the criteria qualifying the property for National Register listing.)

- A** Property is associated with events that have made a significant contribution to the broad patterns of our history.
- B** Property is associated with the lives of persons significant in our past.
- C** Property embodies the distinctive characteristics of a type, period, or method of construction or represents the work of a master, or possesses high artistic values, or represents a significant and distinguishable entity whose components lack individual distinction.
- D** Property has yielded, or is likely to yield, information important in prehistory or history.

**Criteria Considerations**

(Mark "x" in all the boxes that apply.)

Property is:

- A** owned by a religious institution or used for religious purposes.
- B** removed from its original location.
- C** a birthplace or grave.
- D** a cemetery.
- E** a reconstructed building, object, or structure.
- F** a commemorative property.
- G** less than 50 years of age or achieved significance within the past 50 years.

**Narrative Statement of Significance**

(Explain the significance of the property on one or more continuation sheets.)

**9. Major Bibliographical References**

**Bibliography**

(Cite the books, articles, and other sources used in preparing this form on one or more continuation sheets.)

**Previous documentation on file (NPS):**

- preliminary determination of individual listing (36 CFR 67) has been requested
- previously listed in the National Register
- previously determined eligible by the National Register
- designated a National Historic Landmark
- recorded by Historic American Buildings Survey # \_\_\_\_\_
- recorded by Historic American Engineering Record # \_\_\_\_\_

**Areas of Significance**

(Enter categories from instructions)

Education

Architecture

**Period of Significance**

1926-1946

**Significant Dates**

1926/1927

**Significant Person**

(Complete if Criterion B is marked above)

n/a

**Cultural Affiliation**

n/a

**Architect/Builder**

Winn, Frank A./Unknown

**Primary location of additional data:**

- State Historic Preservation Office
- Other State agency
- Federal agency
- Local government
- University
- Other

Name of repository:

\_\_\_\_\_



**United States Department of the Interior  
National Park Service**

**National Register of Historic Places  
Continuation Sheet**

Section number 7 Page 1 Old Lutz Elementary School, Lutz,  
Hillsborough Co., FL

---

**SUMMARY**

The Old Lutz Elementary School, 18819 U.S. Highway 41 North, Lutz, Hillsborough County, Florida, was built in 1926/27. It is a rectangular, Colonial Revival style building with two stories and an attic. It has a red brick exterior; a hipped roof covered with red asphalt shingles; single-hung, 4/4, wooden sash windows; two tall interior chimneys; and a fanlight on the main facade. The building faces west, toward U.S. 41. Behind the main building is a 1946, covered rain shelter which extends fifty-five feet to the east, where there are rest rooms. A later addition is a storage shed covered by a shed roof.

**SETTING**

The Old Lutz School is located at the northeast corner of U.S. Highway 41 North and 4<sup>th</sup> Avenue, S.E. (Photos 1 & 2). A new Lutz Elementary School is located on 4<sup>th</sup> Avenue, to the east of the old school. U.S. Highway 41 forms the western boundary of the property; immediately to the west of the highway are active CSX railroad tracks. To the north of the school building is an open area.

Although the building itself remains on its original site, its environs have changed considerably. Surrounding pastures have given way to urban sprawl, strip shopping centers, and assorted random buildings. The open area to the north of the school building was a playground area with swings, seesaws, and other equipment (See 1954 Site Plan); the playground equipment has been removed. Behind the old school is a large parking lot for the new school (Photos 1 & 4). Additionally, U.S. Highway 41 is being widened.

**PRESENT PHYSICAL APPEARANCE**

**Exterior**

The exterior walls of the building are red brick on a foundation of cement-faced masonry that rises to about a foot above grade (Photo 5). The masonry is coursed in a common bond

**United States Department of the Interior  
National Park Service**

**National Register of Historic Places  
Continuation Sheet**

Section number 7 Page 2 Old Lutz Elementary School, Lutz,  
Hillsborough Co., FL

---

variety. Five courses of stretchers and a sixth course alternates stretcher and header (5 course American). The hipped roof has approximately a 30 degree pitch; the attic is an insulating air space ventilated by screened soffit vents under the eaves of the main roof.

The building measures 55' x 65', the shorter sides parallel to U.S. Highway 41 (Photo 5). The main (west) facade faces U.S. Highway 41. The main entrance is a centrally located, double door with 9 lights in the top half and 3-light transoms above. The entrance is sheltered by a flat roof suspended by metal rods. Two scroll-like consoles at each end of the roof are primarily decorative (Photo 6). There are two 4/4, single-hung, wooden, sash windows on either side of the door. At the second story and on axis with this doorway is a large fanlight over double, 4/4, sash windows. On either side of the central window are two 4/4, single hung, wood windows on axis with those at the first story.

The north and south elevations have six double windows at each story (Photos 7 & 8). Interior chimneys are located at the center of both elevations. The rear (east) elevation (Photo 9) has centrally located, double doors at the first story, and a double sash window at the second story. Attached to the rear of the building is a one story, gable roofed rain shelter, built in 1946 (Photo 9). The roof is supported by square brick piers. The 22' x 55' shelter leads to a 22' x 17' rest room area at the far end (Photo 10). The restroom area is covered by a continuation of the same roof. The piers and rest room area have a brick exterior coursed in the same bond as that used on the main building. A later addition is a shed roofed storage space (18' x 19') against the east wall of the rest rooms.

**United States Department of the Interior  
National Park Service**

**National Register of Historic Places  
Continuation Sheet**

Section number 7 Page 3 Old Lutz Elementary School, Lutz,  
Hillsborough Co., FL

---

**Interior**

The interior plan of the main building is rectangular with a central, west-east hall (Photo 11), with two classrooms on each side. The hall is lit through the transoms of the front door and through opaque transom windows located high on the interior walls between the classrooms and the hall. These windows also provide ventilation. Near the west end of the hall is an open, quarter-turn stairway with a landing leading to the second floor (Photo 12). The stairway has square balusters and newel posts and a molded railing. A fanlight at the landing lights the stairway and second story (Photo 13).

The plan of the second floor is similar to that of the first. The rear one-third of the hall is partitioned off to make a teacher's office and a library. As on the first floor, there are interior transom windows (Photo 14); however, these second story windows are clear, rather than opaque. In each classroom on the second floor, one of the side windows has been converted into a metal door opening onto the landing of a fire escape mounted against the exterior of the north and south walls of the building (Photos 7 & 8).

All interior spaces have hardwood floors and wooden, tongue-and-groove ceilings. At one time, stoves were used to heat the classrooms, but now the holes to the chimney flues have been blocked. They are still visible in the second floor classrooms. Electric heaters, mounted to the ceilings have been installed in all classrooms. All classrooms have light fixtures with fluorescent lamps. Fixtures typical of the 1920s are in the hallways (Photos 11 & 13).

**Alterations**

The building itself is largely unaltered, although there has been some deterioration due to vandalism and weathering. There are some minor alterations such as the removal and replacement of brackets at the main entrance and the installation of electrical

**United States Department of the Interior  
National Park Service**

**National Register of Historic Places  
Continuation Sheet**

Section number 7 Page 4 Old Lutz Elementary School, Lutz,  
Hillsborough Co., FL

---

service on the main facade. The building retains its basic features of architectural integrity and siting.

Historically, the main building exhibited a distinctive cupola with simple classical moldings (Photos 15 & 16). Its bell-shaped dome and drum were octagonal and painted silver. The dome was topped by a ball-and-spike pinnacle. Eight arched openings with pilasters made up the octagonal drum; functional vents filled these openings, providing ventilation for the whole building. In the summer of 1995, the cupola was struck by lightning; the cupola and the roof were damaged by fire. The roof was repaired and the cupola was removed and is presently being restored. The restoration work is partially funded with state historic preservation grant funds.

In early 1996, the widening of U.S. Highway 41 was begun. In order to accommodate a necessary turn lane in front of the school, 2707 square feet at the western edge of the property was sold to the Florida Department of Transportation. (See Figure 1. The area is 21.66 feet x 125.04 feet x 221.74 feet x 125.05 feet, and indicated by hatch marks.) A 1940s flagpole, located in front of the main entrance, and a sidewalk were in the new right-of-way (Photo 15). The flagpole, sidewalk, and curb at the old edge of the road have been removed (Photos 17 & 18). The flagpole, currently secured behind the school (Photos 9 & 10), will be re-erected at a new location when the grounds are relandscaped.



United States Department of the Interior  
National Park Service

National Register of Historic Places  
Continuation Sheet

Old Lutz Elementary School, Lutz,  
Hillsborough Co., FL

Section number 8 Page 1

---

**SUMMARY**

The Old Lutz Schoolhouse at 18819 U.S. Highway 41 North, is locally significant under **Criterion A** in the area of **Education** and under **Criterion C** for its Colonial Revival style and as the work of Frank A. Winn, a locally prominent architect. Built in 1926/27, the Old Lutz Schoolhouse was the community's second school building. It served as the community school until 1973, when a new elementary school was built immediately behind it. It is currently used as a community center and museum. The Old Lutz Schoolhouse is the oldest publicly built building remaining in the community.

**HISTORIC CONTEXT**

**Lutz**

Although a number of Seminole Indians lived in the area, the first instance of a formal attempt to establish a community occurred in 1883 when Father Xavier A. Stemper opened a post office called Stemper. Eventually, this nucleus became part of a larger agglomeration including a school, a turpentine still, and one-half mile of railroad tracks.

Lutz Junction was established at the crossing of two railroad lines: the Tampa Northern Railroad, which ran north and south into Tampa from Jacksonville; and the Tampa Gulfcoast Railroad (locally known as the Peavine), which ran west to Odessa and Tarpon Springs. This junction came into existence when William P. Lutz, a young engineer from West Virginia, built the first Tampa Northern Railroad in 1907 and then the Tampa Gulfcoast Line in 1909.

In 1911, the North Tampa Land Company acquired 32,000 acres to begin a development centered around the Lutz Junction, and began to lay out a town. Eventually, because of the growth of this settlement, the school, voting place, and post office were moved to Lutz from Stemper. The North Tampa Land Company advertised extensively in Midwest newspapers, and attracted

**United States Department of the Interior  
National Park Service****National Register of Historic Places  
Continuation Sheet**

Section number 8 Page 2 Old Lutz Elementary School, Lutz,  
Hillsborough Co., FL

---

immigrants from Michigan, Indiana, and Ohio; others came from Nevada, Alaska, and Pennsylvania.

Slowly, the community acquired the various amenities of civilization. The clearing of the land for farms and other spaces proceeded hand in hand with the building of houses and other community structures as the trees that were felled became lumber for construction. For quite some time, there were no paved roads, and the inhabitants travelling to Tampa for supplies had to walk on the railroad ties because the sand was too soft for horse drawn wagons. The first paved road was not built until 1921.

Institutional growth accompanied the expansion of the population. In the early period, the men of the town donated one day's work each week to construct public buildings. In 1912, they built the first school, which then also served as the first church, the United Brethren. Lutz did not acquire electric lights until 1925 and did not have regular electrical service until after the Rural Electrification Act of 1936 provided for it.

**Hillsborough County School System**

American citizens began to settle in Hillsborough County in 1824, originally gathering around Fort Brooke at the mouth of the Hillsborough River. As various parts of the county became sufficiently populated, the citizens of these areas began to establish schools. Thus was the inception of the Hillsborough County School System. The first school in the area was the Bloomingdale School, built in 1884. The subsequent schools were not begun until after the turn of the century. They were as follows: Seffner School in 1910, Citrus Park in 1911, Springhead Public School in 1914, and Knights School in 1922. The Lutz Elementary School was built in 1926/27, followed by the Glover School for blacks in 1933 and Pinecrest School in 1938.

**United States Department of the Interior  
National Park Service**

**National Register of Historic Places  
Continuation Sheet**

Section number 8 Page 3 Old Lutz Elementary School, Lutz,  
Hillsborough Co., FL

---

**HISTORIC SIGNIFICANCE**

In 1925, the citizens of Lutz decided that they needed a new school building. An election was held to vote on the issuance of \$30,000 worth of bonds. The bond issuance and a special taxing district were approved. On June 29, 1926, the Board of Public Instruction for the county adopted a resolution setting forth Special Tax School District Number 30 for the north-central county community of Lutz. The school board then engaged Frank A. Winn, a well known architect from Tampa, to design the school.

In 1926/27, the brick school house was completed. The community was very involved in its construction and later care. The citizens themselves enlarged the lunchroom and the ladies of the area served lunches from their own kitchens and milk from their own cows. The schoolhouse also served as a community center where civic clubs and other social groups held their meetings. It was used for plays, dances and other entertainment.

When a new school was built in 1973, the citizens began to organize to save the old building. They petitioned the school board to preserve it and formed the Citizens for the Old Lutz School Building in 1978 to administrate and restore it. The School Board sold the building to the county which leases it to the group for \$1.00 a year. The Citizens continue to use it as a meeting hall and museum.

The Old Lutz Elementary Schoolhouse represents a significant milestone in the development of both the community of Lutz and the Hillsborough County School System. The construction of the school was part of the institutional evolution of Lutz as it acquired the railroad, a post office, a church, paved roads, electricity and other features of social development. As one of the oldest school buildings in Hillsborough County, the Lutz Elementary School holds a place in the historical development of county public education.

**United States Department of the Interior  
National Park Service**

**National Register of Historic Places  
Continuation Sheet**

Section number 8 Page 4 Old Lutz Elementary School, Lutz,  
Hillsborough Co., FL

---

**ARCHITECTURAL CONTEXT AND SIGNIFICANCE**

The Old Lutz Schoolhouse was built in the Colonial Revival style, which was popular in the United from 1880-1955. Characteristic elements of the style that are evident in the building include red brick masonry, the symmetrical plan and exterior design, geometrical proportions, hipped roof, regular fenestration with single-hung wood sash windows and a fanlight (Photo 19) and tall chimneys rising above the roof line.

The architect for this building was Frank A. Winn, Jr. Winn was born in Leesburg, Florida, in 1893 and came with his family to Tampa in 1902. He studied architecture at the Alabama Polytechnic Institute from 1910 until 1914. He was member of the F. J. Kennard architectural firm for seven years before opening his own office in 1921. Winn built a number of schools in the state, including the Citrus Park Elementary School, the Lincoln Elementary School in Plant City, and the Benjamin Franklin Junior High School in Tampa. Additionally, he designed many residences, churches, fraternity houses, and other public buildings in the area. He was a prominent Tampa resident both commercially and socially. Winn died in 1953.

The Old Lutz School is one of the most distinctive buildings in Lutz, not only for its outstanding architecture, but also as one of the few historic buildings remaining in the community.

United States Department of the Interior  
National Park Service

National Register of Historic Places  
Continuation Sheet

Section number 9 Page 1 Old Lutz Elementary School,  
Lutz, Hillsborough Co., FL

---

BIBLIOGRAPHY

The Florida Sun. Conference News, Florida Conference of the  
Evangelical United Brethren Church. Volume 2, Number  
3, May 1962.

Hillsborough County. School Board. Minutes. June 14,  
1918; Book 9, Page 94, April 4, 1927.

"History of the Old Lutz School Building," privately  
printed, no date.

The Lamplighter. Hillsborough County Vocational, Technical,  
Adult and Community Education, Volume 9, Number 2, June  
1980.

MacManus, Elizabeth and Herndon, Naomi, eds. Lutz Olden  
Days. Bicentennial Celebration at the First United  
Methodist Church of Lutz, privately printed, July 4,  
1976.

Zylstra, Sape A., Ph.D., Professor of Humanities, University  
of South Florida. Architectural Evaluation of Old Lutz  
School, 1992.

**United States Department of the Interior  
National Park Service**

**National Register of Historic Places  
Continuation Sheet**

Section number 10 Page 1 Old Lutz Elementary School,  
Hillsborough Co., FL

---

**BOUNDARY DESCRIPTION**

That part of Block 35 of EAST NORTH TAMPA SUBDIVISION as per plat thereof recorded on Plat Book 1, page 128 of the public records of Hillsborough County, Florida, described as follows:

Commence at the Southwest corner of Lot 7 and run 16.04 feet East along the South line of Lot 7 to a point on the easterly right-of-way line [marked Point of Beginning on plat], thence 125.31 feet North to the Northern boundary of Lot 7, thence East along the north line of Lot 7 for 83.96 feet; thence run Northeasterly along the West line (and extension thereof) of Lot 4 for 140.35 feet; thence East along the north line of Lots 4, 3, and 2 for 126.04 feet; thence southerly for 265 feet to a point on the south line of Lot 7 located 230 feet East of the Point of Beginning; thence West along the south line of Lot 7 for 230 feet to the Point of Beginning.

In addition, the boundary extends west to include the strip of land that is used as the right-of-way for U.S. Highway 41. The strip measures 16.04 feet x 124.31 feet x 16.04 feet x 125.31 feet.

Please see attached map.

**BOUNDARY JUSTIFICATION**

The boundary encompasses the building and the land that have historically been associated with the Old Lutz School and retain architectural and historic integrity.

United States Department of the Interior  
National Park Service

National Register of Historic Places  
Continuation Sheet

Photos 1 Old Lutz Elementary School,  
Section number \_\_\_\_\_ Page \_\_\_\_\_ Lutz, Hillsborough Co., FL

---

- 1 1) Lutz Elementary School, 18819 U.S. Highway 41 N.  
2) Lutz, Hillsborough Co., Florida  
3) David Rigney  
4) February 1996  
5) Historic Tampa/Hillsborough County Preservation Board  
6) View along 4th Avenue S.E. (S boundary) from CSX railroad R.O.W.; camera facing E  
7) 1 of 19

**Items 1 through 5 are the same for the remaining photographs unless noted otherwise.**

- 2 6) View along S boundary of site from its S.E. corner; camera facing W  
7) 2 of 19
- 3 6) View across former playground area, including the N elevation of the building; camera facing S  
7) 3 of 19
- 4 6) View of parking lot for the adjacent new Lutz Elementary School from S.E. corner of site; camera facing N.E.  
7) 4 of 19
- 5 3) Rebecca Spain Schwarz  
4) June 13, 1996  
5) Florida Department of Transportation, District 7  
6) Main (W) elevation; camera facing E  
7) 5 of 19
- 6 3) Melinda Chavez  
4) January 14, 1994  
6) Detail of consoles at main entrance  
7) 6 of 19
- 7 3) Rebecca Spain Schwarz  
4) June 13, 1996  
5) Florida Department of Transportation, District 7  
6) N and E elevations; camera facing SW  
7) 7 of 19

**United States Department of the Interior  
National Park Service**

**National Register of Historic Places  
Continuation Sheet**

Section number \_\_\_\_\_ Photos \_\_\_\_\_ 2 \_\_\_\_\_ Old Lutz Elementary School,  
Page \_\_\_\_\_ Lutz, Hillsborough Co., FL

---

- 8      3) Rebecca Spain Schwarz  
4) June 13, 1996  
5) Florida Department of Transportation, District 7  
6) S elevation; camera facing N  
7) 8 of 19
- 9      3) Rebecca Spain Schwarz  
4) June 13, 1996  
5) Florida Department of Transportation, District 7  
6) E (rear) elevation, showing rain shelter, rest room  
    area, and secured flag pole; camera facing SW  
7) 9 of 19
- 10     3) Rebecca Spain Schwarz  
4) June 13, 1996  
5) Florida Department of Transportation, District 7  
6) Rest room area at the end of the rain shelter,  
    storage shed, and flag pole; camera facing SE.  
7) 10 of 19
- 11     3) Rebecca Spain Schwarz  
4) June 13, 1996  
5) Florida Department of Transportation, district 7  
6) Main hall on first floor; camera facing E  
7) 11 of 19
- 12     3) David Adams  
4) March 15, 1993  
6) Main stairway; camera facing W  
7) 12 of 19
- 13     3) David Adams  
4) March 15, 1993  
6) Interior, second floor at head of stairway; camera  
    facing W  
7) 13 of 19
- 14     3) Rebecca Spain Schwarz  
4) June 13, 1996  
5) Florida Department of Transportation, District 7  
6) Typical classroom, showing transom windows and  
    blackboard; camera facing N  
7) 14 of 19



**United States Department of the Interior  
National Park Service**

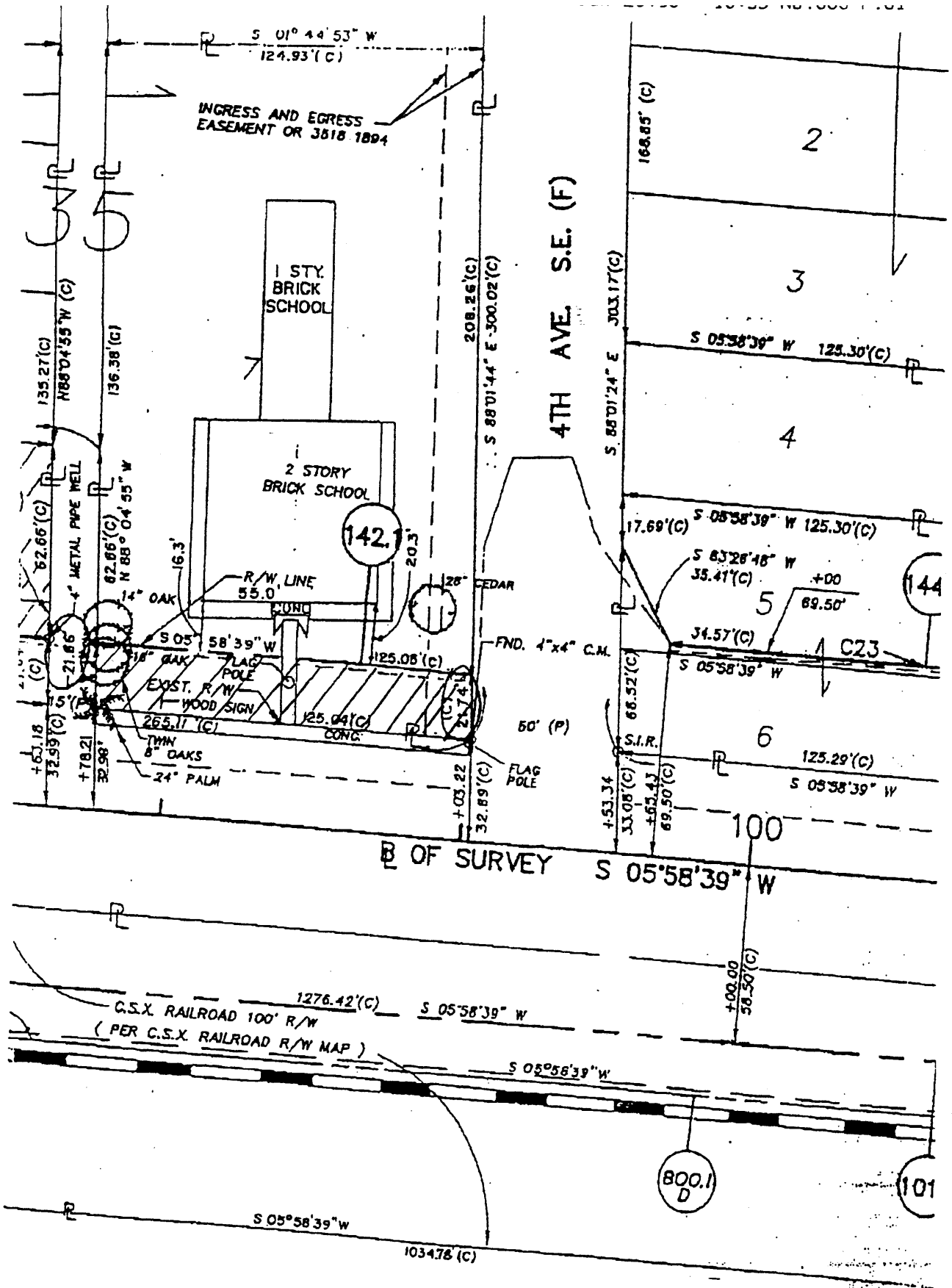
**National Register of Historic Places  
Continuation Sheet**

Photos 3 Old Lutz Elementary School,  
Section number \_\_\_\_\_ Page \_\_\_\_\_ Lutz, Hillsborough Co., FL

---

- 15 3) David Adams  
4) March 15, 1993  
6) W (main) elevation; camera facing E  
7) 15 of 19
- 16 3) David Adams  
4) March 15, 1993  
6) Closeup of cupola  
7) 16 of 19
- 17 6) View along E edge of U.S. 41 R.O.W. (W boundary)  
from S.W. corner of site; camera facing N  
7) 17 of 19
- 18 3) Rebecca Spain Schwarz  
4) June 13, 1996  
5) Florida Department of Transportation, District 7  
6) W boundary, after removal of sidewalk and flag  
pole; camera facing N  
7) 18 of 19
- 19 3) David Adams  
4) March 15, 1993  
6) Detail of fanlight window over main entrance; camera  
facing E  
7) 19 of 19





OLD LUTZ SCHOOL  
 Lutz, Hillsborough County, Florida

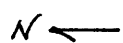


Figure 1



Partial copy

Approved by the Board of Public Instruction  
of the State of Wisconsin  
on August 1, 1947  
by the Board of Public Instruction  
of Wisconsin

BOARD OF PUBLIC INSTRUCTION

Wisconsin County, State

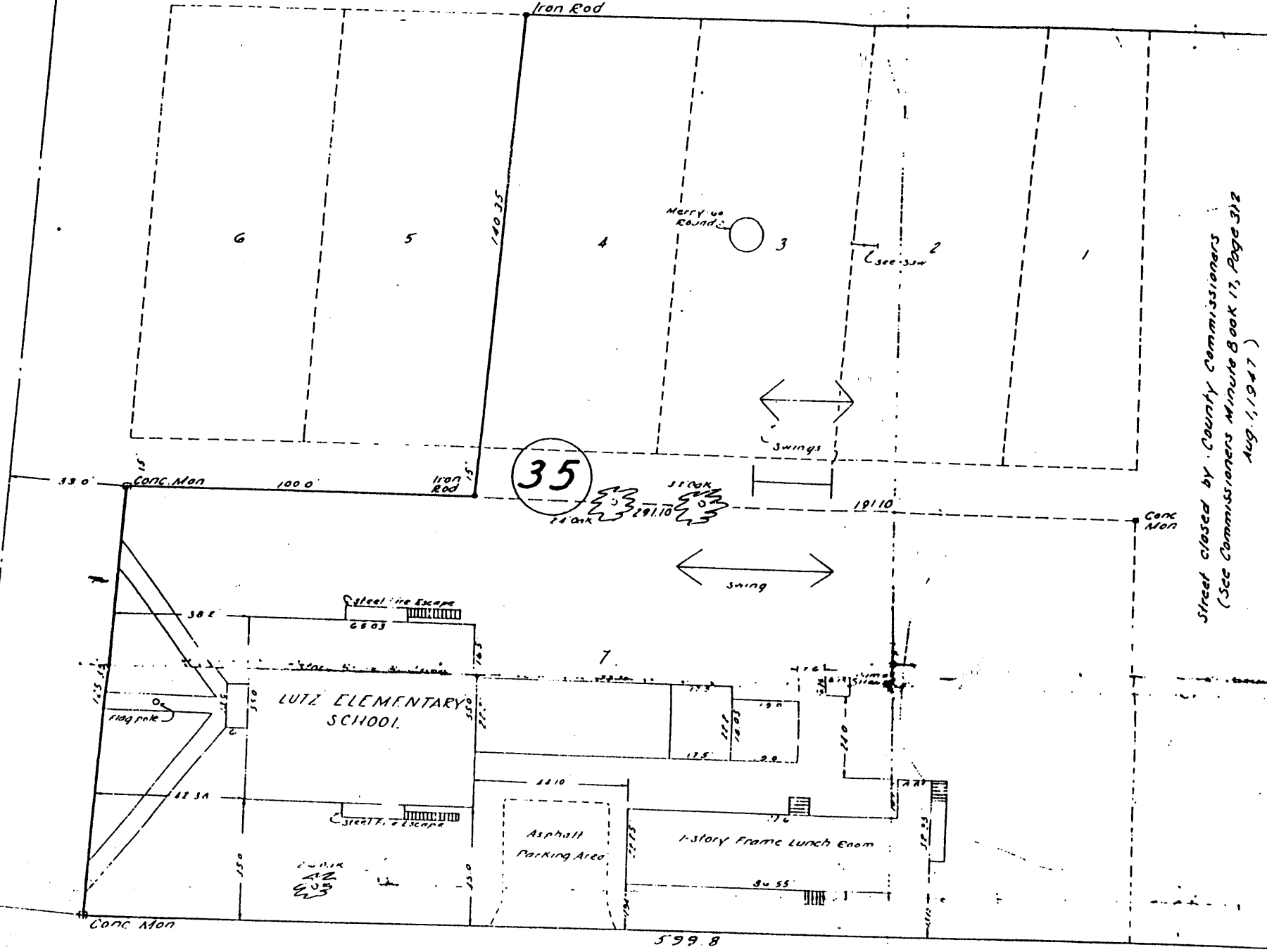
ADP

LUTZ ELEMENTARY & JUNIOR HIGH SCHOOLS

Approved: February 1, 1954

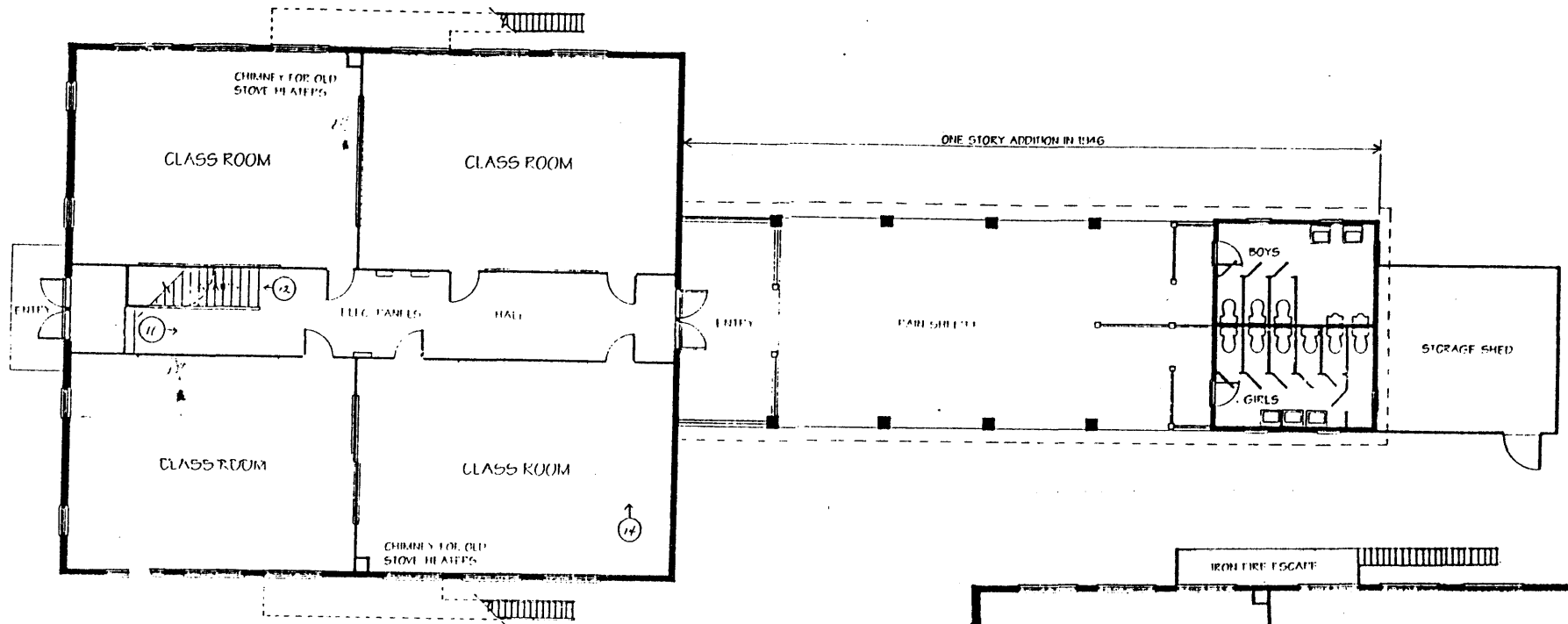
PHILL ENGINEERING CO.

PHILL ENGINEERING CO.



1954 Site Plan

Street closed by County Commissioners  
(See Commissioners Minute Book 17, Page 312  
Aug. 1, 1947)



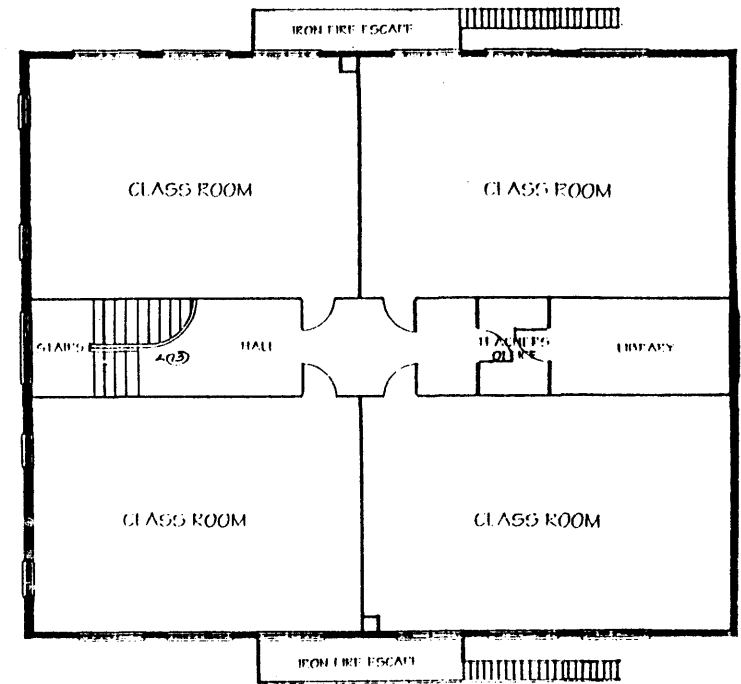
FIRST FLOOR

0 4 8 16 FT.



# → Photo # and direction

**OLD LUTZ ELEMENTARY SCHOOL**  
 18819 U.S. Highway 41 North  
 Lutz, Hillsborough Co., FL



SECOND FLOOR

0 4 8 16 FT.