

**United States Department of the Interior
National Park Service**

**National Register of Historic Places
Continuation Sheet**

Section number _____ Page _____

SUPPLEMENTARY LISTING RECORD

NRIS Reference Number: 03000151

Date Listed: March 24, 2003

Property Name: Guildfield Missionary Baptist Church

County: Montgomery

State: Tennessee

Rural African-American Churches in Tennessee
Multiple Name

This property is listed in the National Register of Historic Places in accordance with the attached nomination documentation subject to the following exceptions, exclusions, or amendments, notwithstanding the National Park Service certification included in the nomination documentation.

for Daniel J. Viva
Signature of the Keeper

March 24, 2003
Date of Action

Amended Items in Nomination:

Section 5: Classification

The resource count is hereby changed to one (1) contributing building to accurately reflect the resources within boundaries of the nominated property. The revised total resource count is one contributing building and zero noncontributing resources.

The Tennessee State Historic Preservation Office was notified of this amendment.

DISTRIBUTION:

- National Register property file**
- Nominating Authority (without nomination attachment)**

(Oct. 1990)

United States Department of the Interior
National Park Service
National Register of Historic Places
Registration Form

151

This form is for use in nominating or requesting determinations for individual properties and districts. See instructions in *How to Complete the National Register of Historic Places Registration Form* (National Register Bulletin 16A). Complete each item by marking "X" in the appropriate box or by entering the information requested. If an item does not apply to the property being documented, enter "N/A" for "not applicable." For functions, architectural classification, materials, and areas of significance, enter only categories and subcategories from the instructions. Place additional entries and narrative items on continuation sheets (NPS Form 10-900a). Use a typewriter, word processor, or computer, to complete all items.

1. Name of Property

historic name Guildfield Missionary Baptist Church

other names/site number N/A

2. Location

street & number Guildfield Church Road

N/A not for publication

city or town South Guthrie

N/A vicinity

state Tennessee code TN county Montgomery code 125 zip code 42234

3. State/Federal Agency Certification

As the designated authority under the National Historic Preservation Act, as amended, I hereby certify that this nomination request for determination of eligibility meets the documentation standards for registering properties in the National Register of Historic Places and meets the procedural and professional requirements set for in 36 CFR Part 60. In my opinion, the property meets does not meet the National Register criteria. I recommend that this property be considered significant nationally statewide locally. (See continuation sheet for additional comments.)

Herbert L. Hays
Signature of certifying official/Title

2/7/03
Date

Deputy State Historical Preservation Officer, Tennessee Historical Commission
State or Federal agency and bureau

In my opinion, the property meets does not meet the National Register criteria. (See Continuation sheet for additional comments.)

Signature of certifying official/Title

Date

State or Federal agency and bureau

4. National Park Service Certification

- I hereby certify that the property is:
- entered in the National Register.
 - See continuation sheet
- determined eligible for the National Register.
 - See continuation sheet
- determined not eligible for the National Register.
- removed from the National Register.
- other,
(explain:)

Daniel J. Vivian
Signature of the Keeper

3/24/03
Date of Action

5. Classification

Ownership of Property
(Check as many boxes as apply)

Category of Property
(Check only one box)

Number of Resources within Property
(Do not include previously listed resources in count.)

- private
- public-local
- public-State
- public-Federal

- building(s)
- district
- site
- structure
- object

Contributing	Noncontributing	
1	0	buildings
		sites
		structures
		objects
1	0	Total

Name of related multiple property listing
(Enter "N/A" if property is not part of a multiple property listing.)

Number of Contributing resources previously listed in the National Register

Historic Rural African-American Churches in TN MPS

0

6. Function or Use

Historic Functions
(Enter categories from instructions)

Current Functions
(Enter categories from instructions)

RELIGION: religious facility

RELIGION: religious facility

EDUCATION: school

7. Description

Architectural Classification
(Enter categories from instructions)

Materials
(Enter categories from instructions)

Romanesque Revival

foundation CONCRETE

walls BRICK

roof ASPHALT SHINGLE; METAL

other METAL; GLASS

Narrative Description

(Describe the historic and current condition of the property on one or more continuation sheets.)

See continuation sheets.

8. Statement of Significance

Applicable National Register Criteria

(Mark "x" in one or more boxes for the criteria qualifying the property for National Register listing.)

- A Property is associated with events that have made a significant contribution to the broad patterns of our history.
B Property is associated with the lives of persons significant in our past.
C Property embodies the distinctive characteristics of a type, period, or method of construction or represents the work of a master, or possesses high artistic values, or represents a significant and distinguishable entity whose components lack individual distinction.
D Property has yielded, or is likely to yield, information important in prehistory or history.

Criteria Considerations

(Mark "x" in all the boxes that apply.)

Property is:

- A owned by a religious institution or used for religious purposes.
B removed from its original location.
C moved from its original location.
D a cemetery.
E a reconstructed building, object, or structure.
F a commemorative property
G less than 50 years of age or achieved significance within the past 50 years.

Areas of Significance

(Enter categories from instructions)

ETHNIC HERITAGE: African-American

RELIGION

SOCIAL HISTORY

ARCHITECTURE

Period of Significance

1922- 1952

Significant Dates

N/A

Significant Person

(Complete if Criterion B is marked)

N/A

Cultural Affiliation

N/A

Architect/Builder

Unknown; Burning Bush Lodge #224, A.F.&A.M., builder

Narrative Statement of Significance

(Explain the significance of the property on one or more continuation sheets.)

9. Major Bibliographical References

Bibliography

(Cite the books, articles, and other sources used in preparing this form on one or more continuation sheets.)

Previous documentation on file (NPS): N/A

- preliminary determination of individual listing (36 CFR 67) has been requested
previously listed in the National Register
Previously determined eligible by the National Register
designated a National Historic Landmark
recorded by Historic American Buildings Survey #
recorded by Historic American Engineering

Primary location of additional data:

- State Historic Preservation Office
Other State Agency
Federal Agency
Local Government
University
Other

Name of repository:

MTSU Center for Historic Preservation

Guildfield Missionary Baptist Church

Name of Property

Montgomery County, TN

County and State

10. Geographical Data

Acreage of Property Approximately one acre Guthrie 303 NW, KY-TN

UTM References

(Place additional UTM references on a continuation sheet.)

1	<u>16</u>	<u>484632</u>	<u>4054790</u>	3	<u> </u>	<u> </u>	<u> </u>
	Zone	Easting	Northing		Zone	Easting	Northing
2	<u> </u>	<u> </u>	<u> </u>	4	<u> </u>	<u> </u>	<u> </u>

See continuation sheet

Verbal Boundary Description

(Describe the boundaries of the property on a continuation sheet.)

Boundary Justification

(Explain why the boundaries were selected on a continuation sheet.)

11. Form Prepared By

name/title Carroll Van West
organization Center for Historic Preservation date January 29, 2002
street & number Middle Tennessee State University—Box 80 telephone 615-898-2947
city or town Murfreesboro state TN zip code 37132

Additional Documentation

Submit the following items with the completed form:

Continuation Sheets

Maps

A **USGS map** (7.5 or 15 minute series) indicating the property's location

A **Sketch map** for historic districts and properties having large acreage or numerous resources.

Photographs

Representative **black and white photographs** of the property.

Additional items

(Check with the SHPO or FPO for any additional items.)

Property Owner

(Complete this item at the request of SHPO or FPO.)

name Guildfield Missionary Baptist Church, c/o Rev. W. B. Kirby, Pastor
street & number P.O. Box 371 telephone 931-624-1682
city or town Guthrie state KY zip code 42234

Paperwork Reduction Act Statement: This information is being collected for applications to the National Register of Historic Places to nominate properties for listing or determine eligibility for listing, to list properties, and to amend existing listing. Response to this request is required to obtain a benefit in accordance with the National Historic Preservation Act, as amended (16 U.S.C. 470 *et seq.*)

Estimated Burden Statement: Public reporting burden for this form is estimated to average 18.1 hours per response including time for reviewing instructions, gathering and maintaining data, and completing and reviewing the form. Direct comments regarding this burden estimate or any aspect of this form to the Chief, Administrative Services Division, National Park Service, P. O. Box 37127, Washington, DC 20013-7127; and the Office of Management and Budget, Paperwork Reductions Projects (1024-0018), Washington, DC 20303.

United States Department of the Interior
National Park Service

National Register of Historic Places Continuation Sheet

Section number 7 Page 1

Guildfield Missionary Baptist Church, Montgomery County,
TN

DESCRIPTION

The Guildfield Missionary Baptist Church, constructed in 1922, is located in a rural African-American neighborhood in South Guthrie, Tennessee, which is in Montgomery County just south of the state line between Kentucky and Tennessee. The church faces a narrow county road and is situated on a corner lot, with parking lots on the north and south side of the building. The two-story brick church has a gable-front entrance and an asphalt shingle gable roof and rests on a concrete foundation. Its sanctuary, reached by exterior concrete steps on the southeast, rests on top of the raised basement level, which houses Sunday School classrooms and a community room with kitchen.

The east facade has four symmetrical bays, with two large Romanesque arched colored glass windows in the center of the facade, flanked by brick towers with Romanesque arched double doorways with multi-pane semi-circular fanlights. The glass and metal doors are replacement doors, installed circa 1967. The eight-pane colored glass windows are also replacements, installed circa 1967. Situated below the arched windows and at the raised basement level are two multi-light windows. Ventilation grills are symmetrically arranged, at the gable point of the roof and at the top of the building's square towers. The central grill is capped by a semi-circular arch and is situated above a concrete block with the wording "Guildfield Baptist Church 1922." At the southeast tower, concrete steps, with metal railings, rise in two levels to the entrance. The concrete steps and metal railings, according to older congregation members, date to circa 1935. The entrance in the northwest tower does not have steps, nor does any architectural evidence exist to suggest that steps were ever in place. Members do not recall that the northwest entrance ever had steps leading to it. Metal caps top both towers. Brick buttresses, with white painted concrete triangular-shaped capstones are on the north and south corners of the towers. Vents were installed in the towers circa 1967; the vents replaced bricked-in arch openings, according to older members of the congregation. The congregation also decided to paint the original red brick a bright red color in 1980.

The north and south elevations are largely identical, composed of a symmetrical arrangement of six window bays separated by brick buttresses with white painted concrete triangular capstones. The south elevation contains the building's dedication stone, at the southeast corner of the elevation. It reads: "Burning Bush Lodge/ Number 224/A.F. & A. M." on its south side and "P. D. Dennis, D. D.; Pastor C. A. Jordan; E. D. Warfield; W. M. Johnson; M. W. Marshall." The second story tower window is a replacement window, circa 1967, while the ground floor window is an original two-part casement (a set of casements over a set of casements) window. The second story sanctuary windows are large casement windows of colored glass configured so the upper six-pane section is fixed while a panel centered in the lower six-pane section opens in a hopper fashion. The windows have white painted concrete sills. The ground floor windows are similar to the ground floor tower window, with a set of casements above a set of casements. The windows have a projecting row of bricks underneath them. The second story window at the building's

United States Department of the Interior
National Park Service

National Register of Historic Places Continuation Sheet

Section number 7 Page 2

Guildfield Missionary Baptist Church, Montgomery County,
TN

southwest corner has been altered, with an exit door added and a metal fire escape added circa 1967. There is no ground-floor window below the southwest-most sanctuary window.

The north elevation is composed of a symmetrical arrangement of six window bays separated by brick buttresses with white painted concrete triangular capstones. The second story tower window is a replacement window, circa 1967, while the ground floor window is an original two-part casement window with a configuration of a set of casements over a set of casements. The second story sanctuary windows are large casement windows of colored glass configured so the upper six-pane section is fixed while a panel centered in the lower six-pane section opens in hopper fashion. The ground floor windows are similar to the ground floor tower window, with a set of casements above a set of casements. The eastern most ground floor bay is a metal and glass replacement door, installed circa 1967, that serves as the exterior entrance to the ground floor rooms.

The west elevation is the rear of the building and also is symmetrically arranged. On the ground floor level, at the southwest corner, is an original exit door, which has a metal and glass storm door, installed circa 1967. Centered in the ground floor level is a two casement over two casement window, flanked by two single casement over single casement windows. The ground floor windows have a projecting row of brick beneath each window. The sanctuary floor level has larger colored glass windows, with two fixed four-pane windows on the south side of the elevation and two fixed four-pane windows on the north side of the elevation. The sanctuary level windows have flat brick arches and white painted concrete sills. A four-row-wide brick pattern defines the cornice of the gable end of the elevation.

The interior of the sanctuary retains a high degree of integrity for this property type. The original plaster walls, pine flooring (covered with carpet along the aisles and in front of the pulpit), pews, wainscoting of wood vertical strips, and beaded board ceiling are intact. The church can seat approximately 300 worshippers. Its dark-stained beaded board ceiling creates a feeling of loftiness and space. Running below the ceiling, from the north to south walls, are white-painted square wood beams, through which the electrical wiring for lights was installed circa 1940. Hanging at regular intervals are white frosted glass globes, which are original to circa 1940. The congregation added modern electrical fans with lights circa 1990. The pews of the sanctuary are arranged in three sections, with a center section flanked by identical sized sections on the north and south. There are ten rows of pews in each section. Cast iron columns supporting a plain cornice define the pulpit, which is located at the west end of the sanctuary. Two wood steps lead to its original wood platform. Behind the pulpit is the original baptismal pool of concrete. Faux pine paneling was installed over the concrete circa 1990. Also at that time the congregation installed a large photograph of river over the baptismal pool. On the north side of the pulpit is the choir area, which contains four rows of theater chairs, circa 1922, placed on three ascending levels of steps. On the south side of the pulpit are two original offering and communion tables and three short rows of pews. At the east end (rear) of the sanctuary are two sets of double doors;

United States Department of the Interior
National Park Service

National Register of Historic Places

Continuation Sheet

Section number 7 Page 3

Guildfield Missionary Baptist Church, Montgomery County,
TN

each are wood doors with three narrow rectangular lights. In front of the exterior windows is an original beaded board partition behind which is a wood single-flight staircase that leads into the ground floor rooms. The vestibule has its original wood floors and the wood double door leading into the sanctuary is original. The vestibule area on the opposite side, where an exterior stair was never constructed, also retains its original wood floor and double doors. This space is used for storage.

The ground floor was finished between 1934 and 1940 and altered circa 1970, when a central air system was installed, a dropped ceiling installed, carpets added over the concrete floor, and the walls, classrooms, restrooms, and church offices received faux pine paneling. The original configuration of the rooms was kept, however, with a large open area in the center of the floor surrounded by classrooms and offices along the walls. A modern kitchen was installed circa 1940, and has since received periodic updates in appliances.

Guildfield Missionary Baptist Church meets the registration requirements listed in the Historic Rural African-American Churches in Tennessee, 1850-1970 MPS. The historic church building from 1922 exhibits a strong degree of integrity in setting, massing, workmanship, and overall exterior and interior appearance. Of particular note is that the exterior has experienced no additions, that it is a brick, two-story building (both rarities for rural African-American churches in Tennessee), and that it has a clear stylistic statement (Romanesque Revival) not impacted by later additions of architectural elements. The interior woodwork, especially the wainscoting, ceiling, and flooring, is also noteworthy. Overall, the church retains a high degree of integrity in location, feeling, and association, and still serves as an architectural landmark in this borderline community.

United States Department of the Interior
National Park Service

National Register of Historic Places Continuation Sheet

Section number 8 Page 4

Guildfield Missionary Baptist Church, Montgomery County,
TN

STATEMENT OF SIGNIFICANCE

The Guildfield Missionary Baptist Church, in South Guthrie, a small community on the Tennessee-Kentucky border in Montgomery County, TN, is eligible for listing in the National Register of Historic Places under Criterion A for its local significance in the African-American ethnic heritage of education and social history and under Criterion C for its largely extant architectural statement of Romanesque Revival style as interpreted in an early 1920s context. It meets the registration requirements for Criterion A and Criterion C significance as outlined in the Rural African-American Churches in Tennessee, 1850-1970 MPS.

Background

The congregation that became Guildfield Missionary Baptist Church dates to meetings in 1868 held at the South Guthrie home (not extant) of Isaac Saile. The congregation formally organized, under the auspices of the Consolidated American Missionary Baptist Convention, in 1869. Reverend C. W. Ware served as the first pastor and continued in the post until his death in 1882. The name Guildfield came from a suggestion by a deacon's wife, Mrs. William Saile (first name, maiden name unknown). A prominent Baptist congregation in Petersburg, Virginia, dating to the Civil War era, was named "Guildfield." It is unknown if the Tennessee congregation had a connection to, or association with, the Virginia church. There are no other Guildfield African-American churches in Tennessee.

On July 13, 1871, Thomas J. Pettus and his wife Alice C. Pettus deeded, in exchange for \$500, a lot of property near the junction of the Memphis, Clarksville, and Louisville Railroad as it entered the state of Tennessee to George Bryant, Lewis Randle, and Samuel Seat (the trustees of the "Colored Baptist Church"). The town known as South Guthrie did not exist at this time; the area of Guthrie, Kentucky, south of the state line was known as most charitably as "Squiggstown," more commonly among the white residents of Guthrie, who lived on the Kentucky side, as "Niggertown." Guthrie itself was a new town, established in 1868; when a railroad junction was completed there in 1870, the town became more than a place name and started to grow. Thus, the Guildfield congregation is one of the oldest religious institutions in Guthrie. The railroad line still runs about one hundred yards west of the church lot and Guthrie, Kentucky, and South Guthrie, Tennessee, are still very much divided into white (Guthrie) and black (South Guthrie) worlds.

According to the research of Montgomery County historian Eleanor Williams, the initial property for the church "contained a one room log building that had been previously used as a school." (Williams, 238) Although the association has not been investigated, if Guthrie is similar to other examples in Tennessee, the one room log building was in all likelihood a Freedman's Bureau school site. Sometime prior to 1882, the congregation had replaced the log building with a rectangular, gable-end frame church building. Then during the term of Rev. A. M. Carr, between

United States Department of the Interior
National Park Service

National Register of Historic Places Continuation Sheet

Section number 8 Page 5

Guildfield Missionary Baptist Church, Montgomery County,
TN

1822 and 1886, another frame church, "with two front entrances, was erected. The women sat of the left side of the building and the men on the right." (Williams, 238).

During the 1890s, the congregation again built a new frame building, under the guidance of Rev. E. F. Dennis, of New Providence, Montgomery County, who served as pastor between 1891 and 1897. The congregation established its first outreach program, the Women's Missionary Society, in 1895. It also organized and held its first Sunday School sessions in the new frame church in 1895. In 1900 the congregation organized its Baptist Training Union.

Guildfield Missionary Baptist Church Building

The frame building of circa 1895 served the congregation until the present 1922 church building was constructed. The circa 1895 church building may have been damaged during a tornado that year which destroyed the nearby African-American school. A more likely influence, however, is the constant growth of the local black population in the early decades of the century. A local crosstie plant and a broom factory provided industrial employment. With the state line as a rigid line of segregation, a small middle-class of black professionals developed on the South Guthrie side. African-American tobacco farmers of the "Black Patch" also brought wealth into the local black community.

Yet the black community was small, and, in general, poor. Therefore, the building of a large, architecturally distinctive brick, two-story church remains a remarkable achievement, one that local residents lay at the feet not only of Rev. Paul D. Dennis, the son of E. F. Dennis, who served as pastor from 1897 to 1923, but also Edward B. Warfield, a church deacon, long-time Sunday School teacher, and its Treasurer. Warfield was a progressive, who believed that blacks must uplift themselves through both faith and education. In 1922, he was the individual most responsible for raising the money to build the new church—indeed, he was given the honor of laying the cornerstone at its dedication in 1922. Warfield also led the fund-raising attempts to build a Rosenwald school in Guthrie after a tornado destroyed the previous school. Warfield was successful; a two-room Rosenwald plan building (still extant but altered; it is now the South Guthrie community center) was built in 1922, with Warfield as chairman of the planning committee and treasurer of the school. Identified in Rosenwald records as the "State Line" school, the school was built with \$500 from local blacks, \$700 from public funds, and \$300 from the Rosenwald Fund. Local residents knew the school as the "Warfield school," a designation it still retains today. The builders of the school were Benjamin Franklin Rives, a black contractor/carpenter; George Rives, Jr., who read and interpreted the Rosenwald-supplied blueprints; William Oscar Pennington, brick mason; and Hezekiah Hampton, identified as a "helper." Due to Warfield's association as director of planning for the school—and his acknowledged role in the building of the church, it is fair to assume that Benjamin Franklin Rives and William Oscar Pennington were probably the carpenter and mason, respectively, for Guildfield Missionary Baptist Church. The interior of the church sanctuary especially shows the hand of an experienced carpenter in its intricately patterned

United States Department of the Interior
National Park Service

National Register of Historic Places

Continuation Sheet

Section number 8 Page 6

Guildfield Missionary Baptist Church, Montgomery County,
TN

beaded board ceiling and the vertical beaded board of the wainscoting. Among extant rural African-American churches in small-town Middle Tennessee, none match the size, the brick masonry, and architectural distinctiveness of this building.

The church was always a social institution for local blacks, but became more so during the ministry of Rev. T. E. Winston, who came to Guildfield in the midst of the Great Depression in September 1934. Rev. Winston finished the ground floor of the building, including the large open room for community gatherings, and installed modern rest rooms and a kitchen during the decade. The church, according to local residents, was a place where New Deal food relief and canning projects took place. Winston remained minister until May 1977. In the last decade of his ministry at Guildfield, Rev. Winston supervised its final stages of renovation, installing new stained glass windows in the facade in 1967 and installing storm doors and a central heat and air system in the 1970.

Rev. William Barker Kirby, a former resident and church member from 1950-1978, accepted the leadership of Guildfield Baptist Church in 1985 and remains its minister today.

United States Department of the Interior
National Park Service

National Register of Historic Places Continuation Sheet

Section number 9 Page 7

Guildfield Missionary Baptist Church, Montgomery County,
TN

BIBLIOGRAPHY

Beech, Ursula Smith. *Along the Warioto: A History of Montgomery County, Tennessee*. Nashville: McQuiddy Press, 1964.

Kirby, W. B., Interview. At Guildfield Baptist Church, August 2001. Guildfield Baptist Church file, Rural African-American Churches in Tennessee Collection. Center for Historic Preservation, Middle Tennessee State University.

Powerful Artifacts: A Guide to Surveying and Documenting Rural African-American Churches in the South. Murfreesboro: Center for Historic Preservation, Middle Tennessee State University, 2000.

Stacey, Sandra. "History of the Warfield Elementary School, 1922-1968." Montgomery County, Tennessee School Histories. www.tengenweb.org/Montgomery/hiswarfield. Accessed January 28, 2002.

Watkins, Floyd C. *Then & Now: The Personal Past in the Poetry of Robert Penn Warren*. Lexington: University Press of Kentucky, 1982.

Williams, Eleanor S. *Worship along the Warioto: Montgomery County, Tennessee*. Clarksville: private, 1995.

United States Department of the Interior
National Park Service

National Register of Historic Places

Continuation Sheet

Section number 10 Page 8

Guildfield Missionary Baptist Church, Montgomery County,
TN

GEOGRAPHICAL DATA

Verbal Boundary Description and Justification

The property is on Guildfield Church Road in the unincorporated town of South Guthrie, Montgomery County, Tennessee, as defined on the attached Montgomery County tax map 011G. The nominated boundaries are defined as parcel 13 and contain all of the acreage of Guildfield Missionary Baptist Church because the property has not been expanded or decreased since its period of significance. The nominated boundaries contain all of the historical acreage associated with the church.

United States Department of the Interior
National Park Service

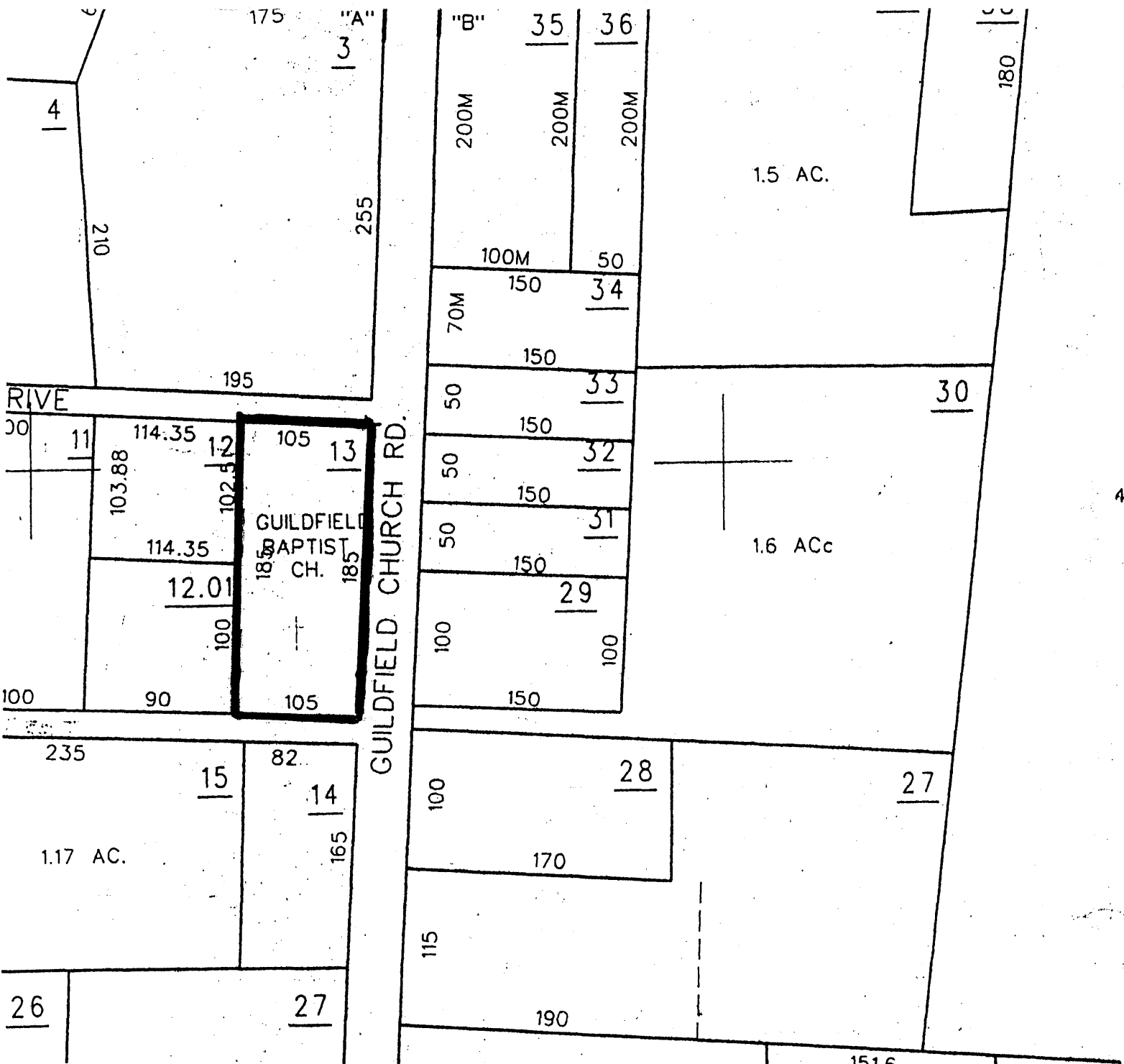
National Register of Historic Places Continuation Sheet

Section number 10 Page 9

Guildfield Missionary Baptist Church, Montgomery County, TN

Tax map

Scale: 1" = 100'



United States Department of the Interior
National Park Service

National Register of Historic Places Continuation Sheet

Section number Photos Page 10

Guildfield Missionary Baptist Church, Montgomery County,
TN

PHOTOGRAPHS

Photographs by: Carroll Van West (exterior)
MTSU Center for Historic Preservation
Box 80, MTSU
Murfreesboro, TN 37132
Eleanor Williams (interior)
Montgomery County Historian
Clarksville, TN

Negatives: Tennessee Historical Commission
Dates: August 2001, February 2002, and April 2002

East façade, facing west
1 of 20

East façade, facing southwest
2 of 20

East façade and south elevation, facing northwest
3 of 20

South elevation, facing northeast
4 of 20

West elevation, facing southeast
5 of 20

North elevation, facing south
6 of 20

Sanctuary, facing west
7 of 20

Sanctuary, facing northwest
8 of 20

Sanctuary, facing southwest
9 of 20

**United States Department of the Interior
National Park Service**

**National Register of Historic Places
Continuation Sheet**

Section number Photos Page 11
_____ _____

Guildfield Missionary Baptist Church, Montgomery County,
TN

Sanctuary, ceiling detail
10 of 20

Sanctuary, ceiling detail
11 of 20

Pulpit and baptistery, facing west
12 of 20

Pulpit and baptistery, facing west
13 of 20

Pulpit and baptistery, facing northwest
14 of 20

Sanctuary, facing east
15 of 20

Sanctuary, facing southeast
16 of 20

Sanctuary, facing northeast
17 of 20

Basement
18 of 20

Basement
19 of 20

Basement
20 of 20