



INLAND SCHOOL DISTRICT #72

CLAY COUNTY, NEBRASKA

BILL COLLAMON, NEBR. STATE HISTORICAL SOCIETY

Dec 2001

NEBRASKA STATE HISTORIC PRESERVATION OFFICE

EXTERIOR VIEW; MAIN FACADE. VIEW IS WEST

PHOTO 1 OF 8



INLAND SCHOOL DISTRICT #72

CLAY COUNTY, NEBRASKA

BILL COLLISHAN, NEBRASKA STATE HISTORICAL SOCIETY

DEC 2001

EXTERIOR VIEW, MAIN FACADE. VIEW IS NORTHWEST

PHOTO 2 of 8



INLAND SCHOOL DISTRICT #72

CLAY COUNTY, NEBRASKA

BILL COLLEMAN, NEBR STATE HISTORICAL SOCIETY

DEC 2001

EXTERIOR VIEW OF WINDOWS, VIEW IS NORTHWEST

PHOTO 3 OF 8



INLAND SCHOOL DISTRICT #72

CLOY COUNTY, NEBRASKA

BILL COLLAHAN, NEBR. STATE HISTORICAL SOCIETY

DEC 2001

VIEW OF REAR FACADE. VIEW IS NORTHEAST

PHOTO 4 OF 8





INLAND SCHOOL DISTRICT #72

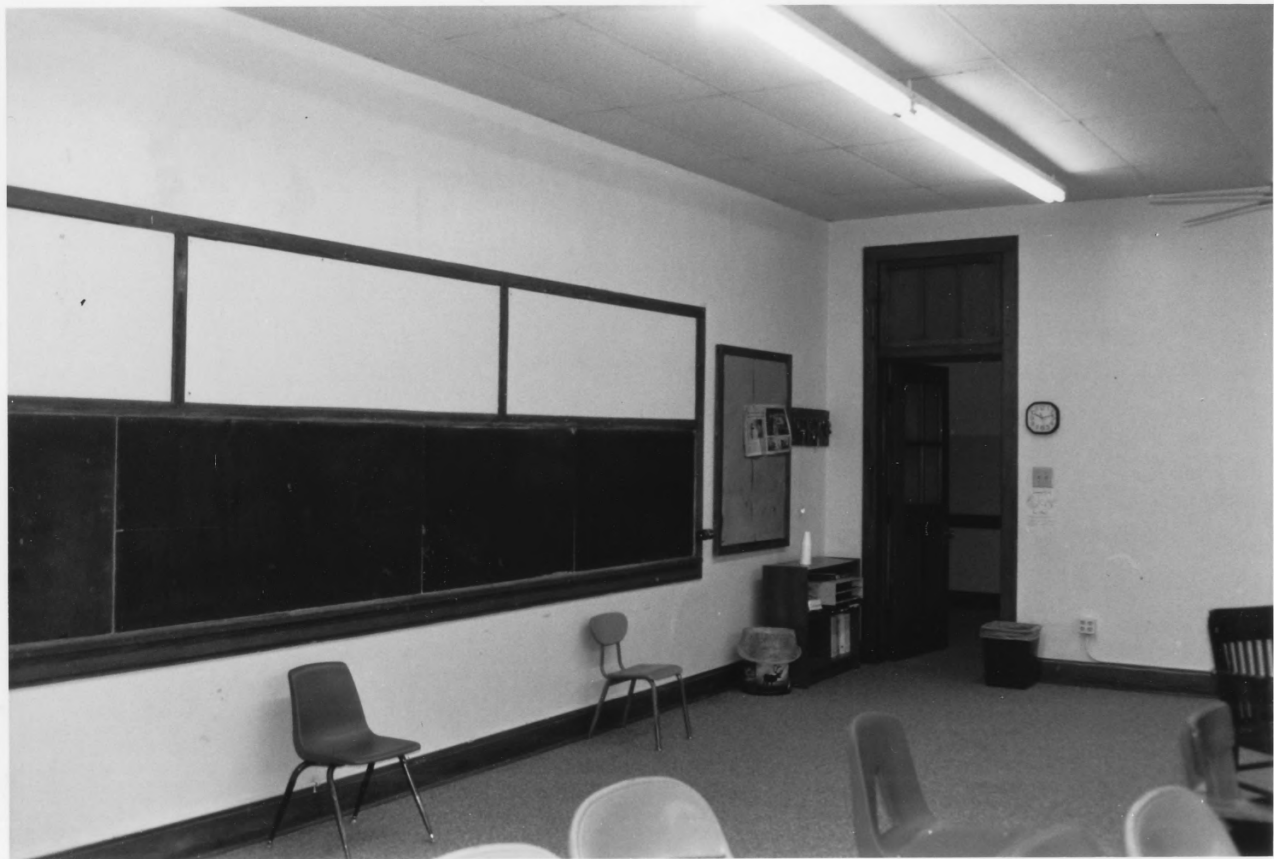
CLAY COUNTY, NEBRASKA

BILL WOLLAHAN, NEBR. STATE HISTORICAL SOCIETY

DEC 2001

INTERIOR VIEW OF CLASSROOM

PHOTO 5 OF 8



VALONIA SCHOOL DISTRICT #72

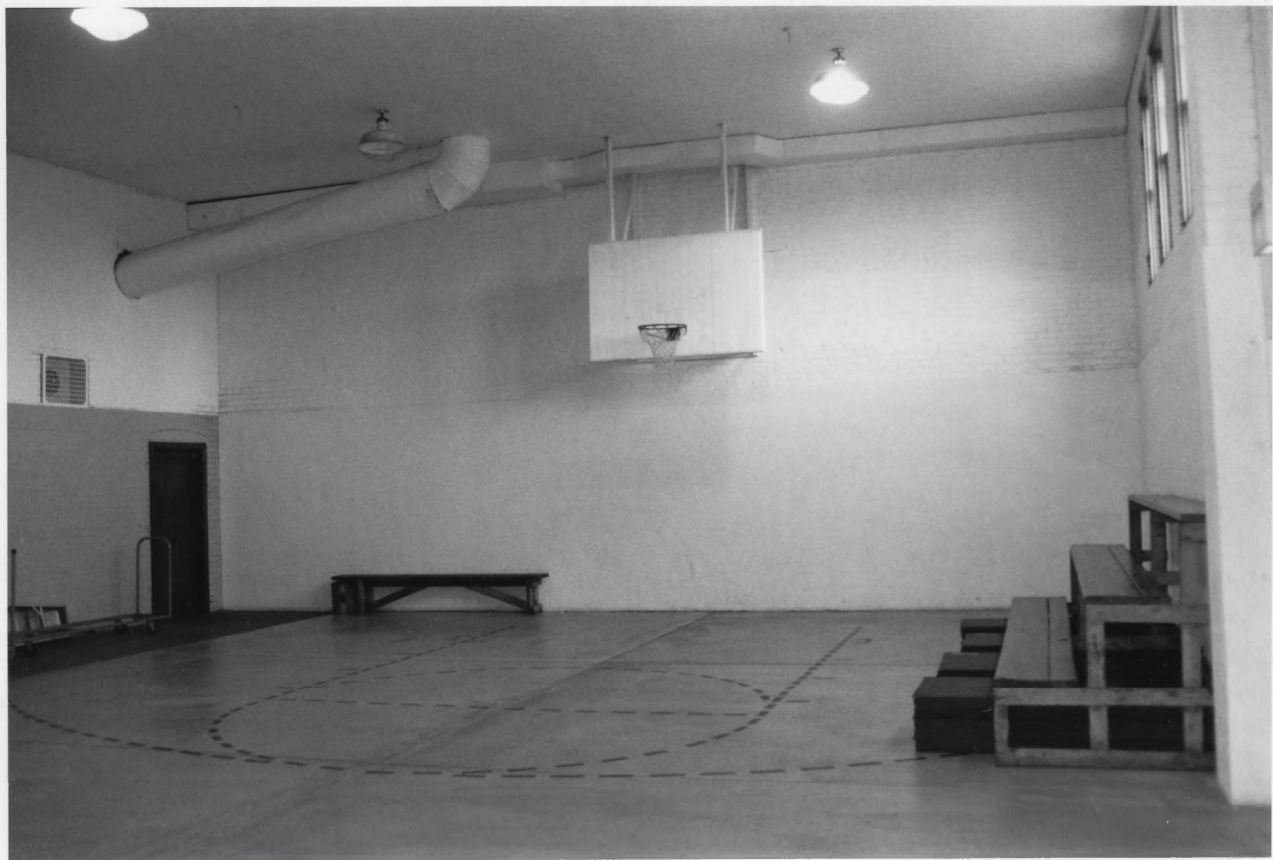
CUSY COUNTY, NEBRASKA

BILL COLLEHART, NEBRASKA STATE HISTORICAL SOCIETY

DEC. 2001

INTERIOR VIEW OF CLASSROOM

PHOTO 6 OF 8



INLAND SCHOOL DISTRICT #72

Clay County, Nebraska

BILL COLLETTON, NEBR. STATE HISTORICAL SOCIETY

Dec 2001

INTERIOR VIEW OF GYMNASIUM

PHOTO 7 OF 8



INLAND SCHOOL DISTRICT # 72

CLAY COUNTY, NEBRASKA

BILL COLLETON, NEBR STATE HISTORICAL SOCIETY

DEC 2001

INTERIOR VIEW OF KITCHEN, GYMNASIUM TO RIGHT

PHOTO 8 OF 8