



Walnut Canyon Dam **JAN 8 1979**

Arizona

Looking east

COCONINO County

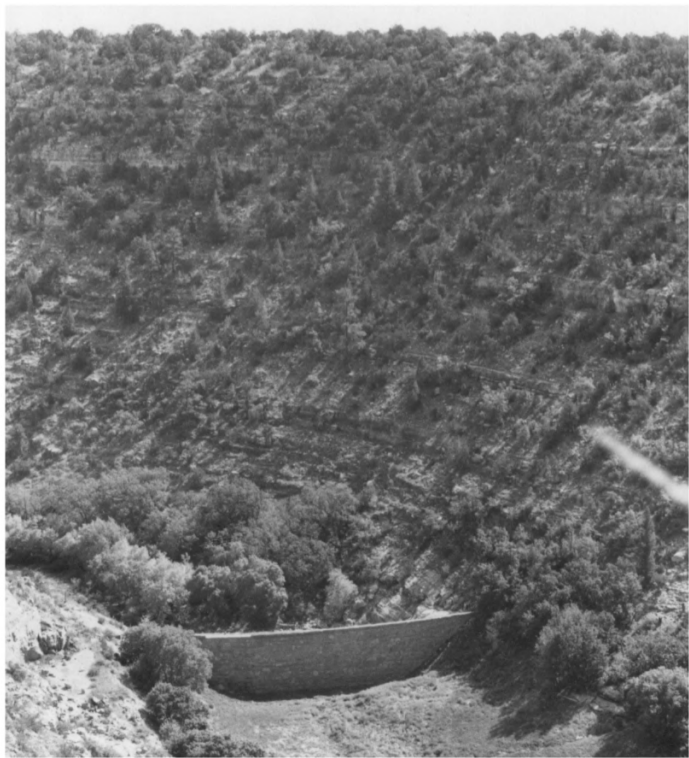
Dark area in lower left corner of dam
is portion damaged by dynamite

Date: 1977

Negative at ASPB

JAN 29 1979

#1



Walnut Canyon Dam
Arizona

Looking east

Showing depth of canyon

Date: 1977

Negative at ASPB

COCONINO Co.

JAN 8 1979

JAN 29 1979

#2



Walnut Canyon Dam

Arizona

Looking southeast

Showing dam before dynamite damage

Date: 1935

Negative at Walnut Canyon National
Monument

JAN 8 1979
COCOONINO CO.

JAN 29 1979

#3



Walnut Canyon Dam

Arizona

Looking north

Showing construction detail & sediment
accumulation on masonry

Date: 1935

Negative at Walnut Canyon National
Monument

JAN 8 1979

COCOONINO CO.

JAN 29 1979

#4



Walnut Canyon Dam

JAN 8 1979

Arizona

Looking southwest

COCOA NO CO.

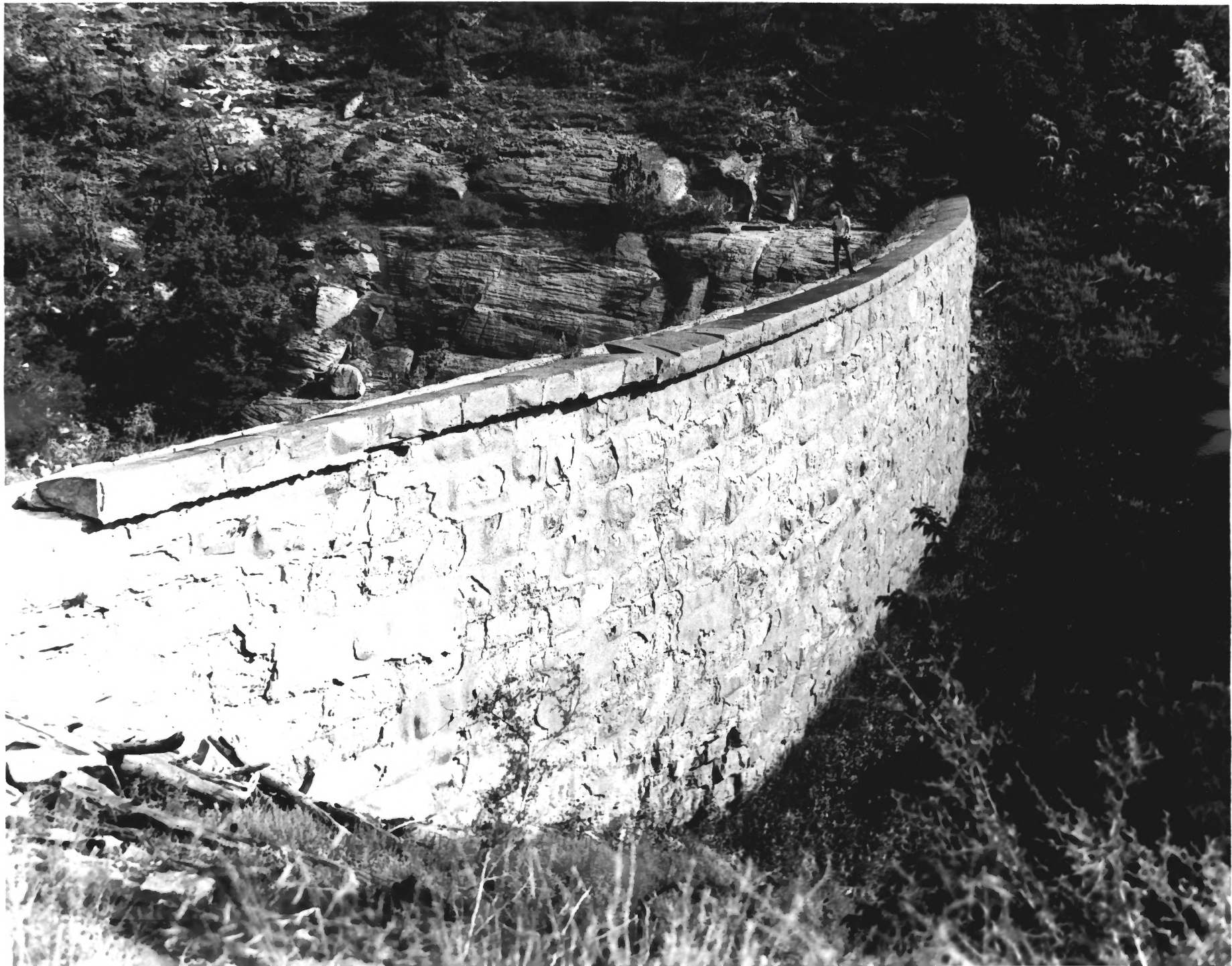
Showing face of dam

Date: 1968

Negative: Dave Rees

JAN 29 1979

#5



Walnut Canyon Dam

JAN 8 1979

Arizona

Looking southeast

COCONINO Co.

Showing reservoir side of dam

Date: 1968

Negative: Dave Rees

JAN 29 1979

#6