

Umpqua River Bridge No. 01822
MP 211.11, Oregon Coast Highway No. 9
Reedsport, Douglas County, Oregon

Umpqua River #01822
US-101 MP 211.21
Douglas County
Reedsport



32 / 01/01
①

10/10/34

Umpqua River #01822
US-101 MP 211.21
Douglas County
Reedsport



(15) 2/28/35

2/28/35

Umpqua River #01822
US-101 MP 211.21
Douglas County
Reedsport



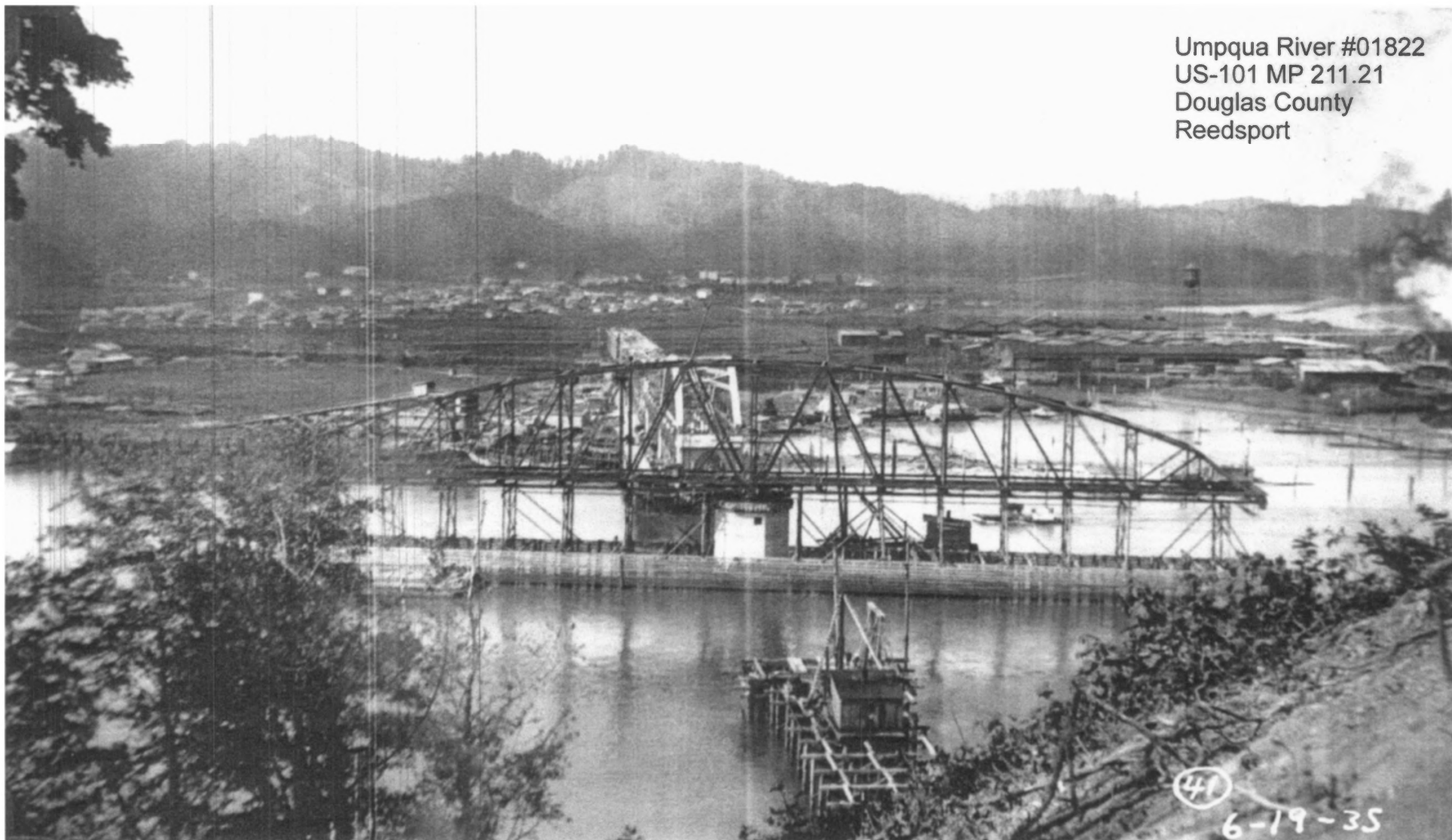
Umpqua River #01822
US-101 MP 211.21
Douglas County
Reedsport



35

6-15-35

Umpqua River #01822
US-101 MP 211.21
Douglas County
Reedsport



41

6-19-35

Umpqua River #01822
US-101 MP 211.21
Douglas County
Reedsport



47 8-1-35

Umpqua River #01822
US-101 MP 211.21
Douglas County
Reedsport



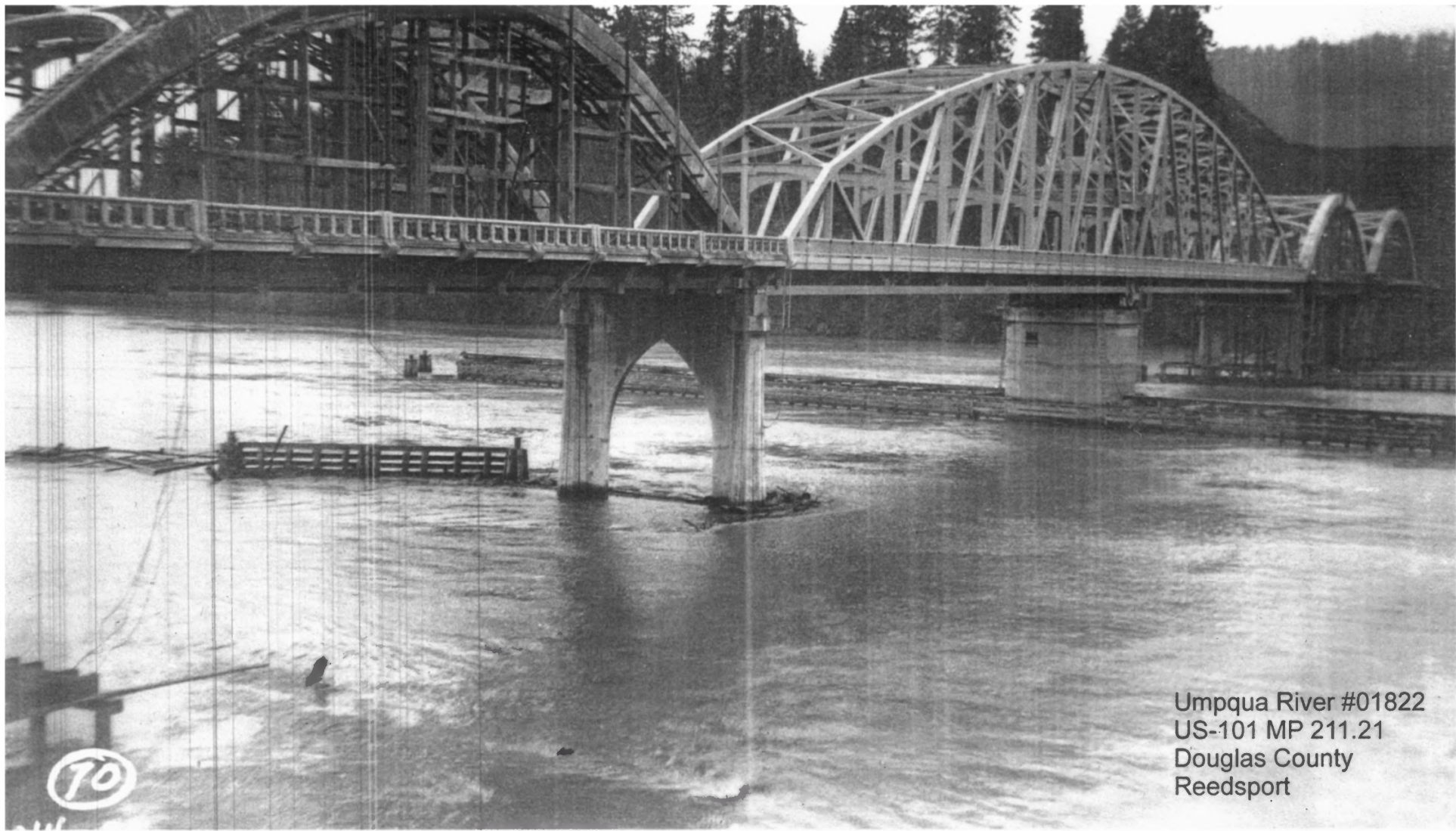
Looking N. from Bent 20, 10-8-35 (54)



Umpqua River #01822
US-101 MP 211.21
Douglas County
Reedsport

10-18-35

60



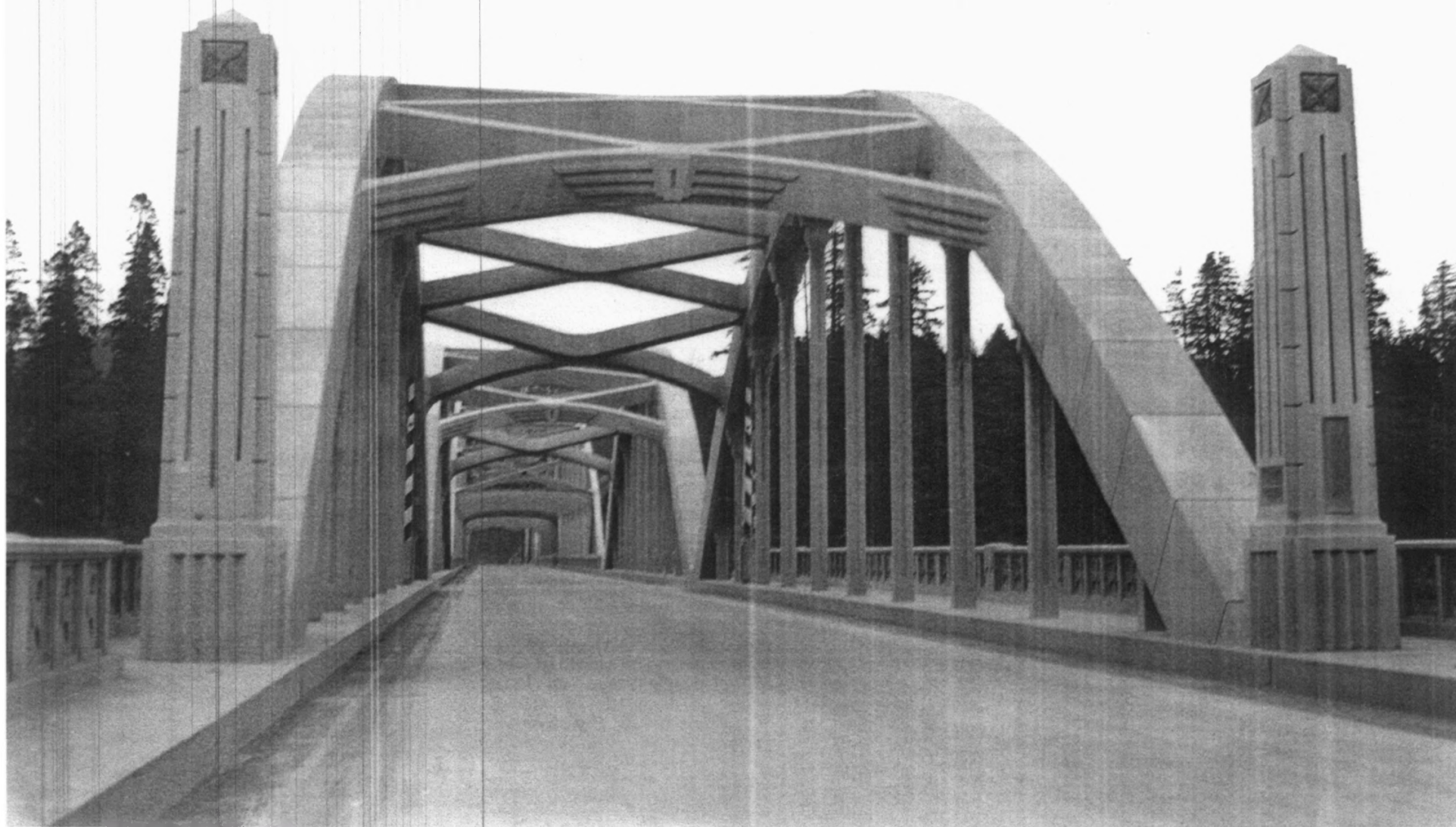
Umpqua River #01822
US-101 MP 211.21
Douglas County
Reedsport



Umpqua River #01822
US-101 MP 211.21
Douglas County
Reedsport

4-C-3C
1822
79

Umpqua River #01822
US-101 MP 211.21
Douglas County
Reedsport





WAPOVA RIVER BRIDGE, REEDSPORT, OREGON



UMPUVA RIVER BRIDGE, REEDSPORT, OREGON

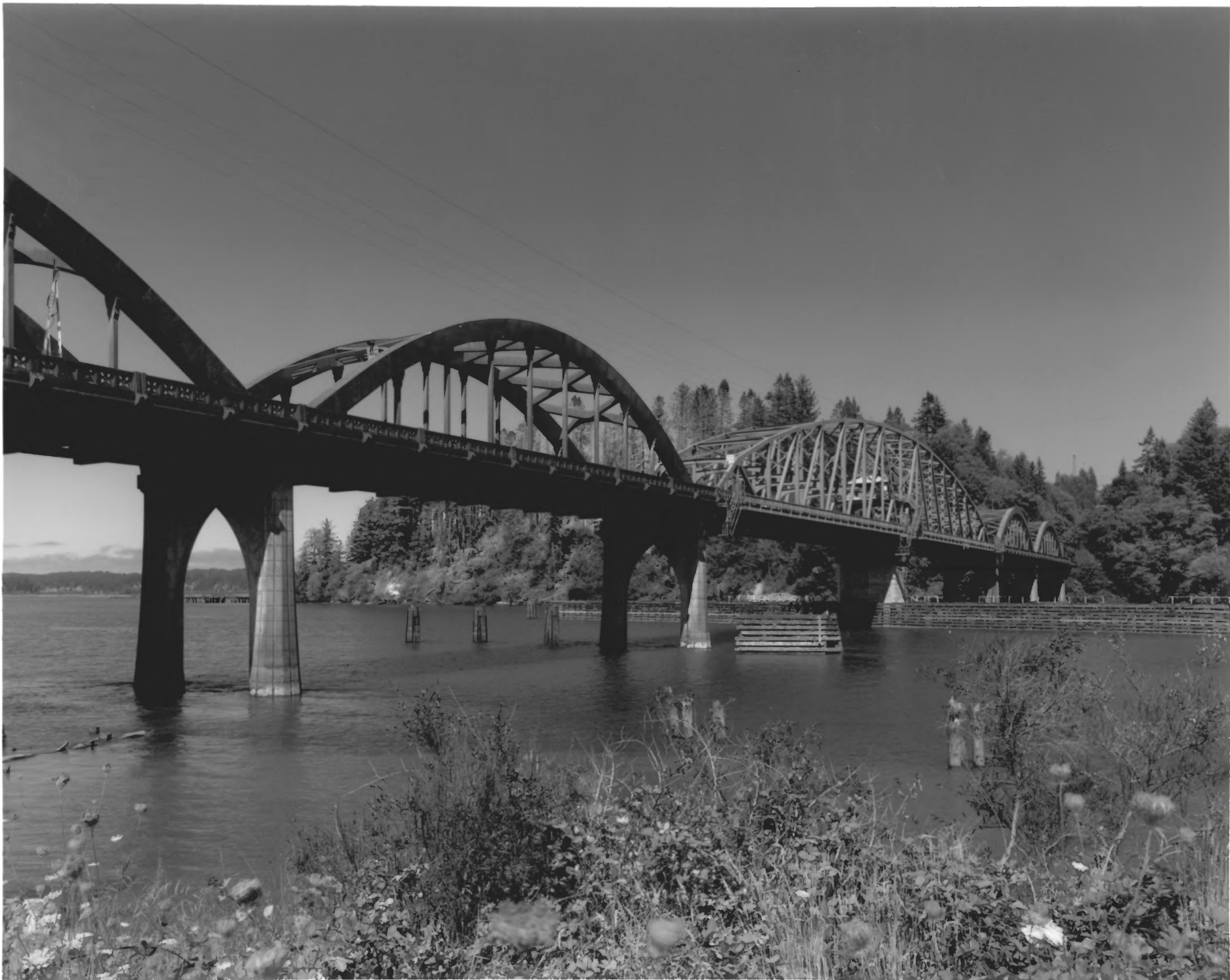
#2



UMPUQA RIVER BRIDGE, REENSPOET, OREGON #3



UMPUVA RIVER BRIDGE, REENSPALT, OREGON 1944



UMPUQA RIVER BRIDGE, REEDSPORT, OREGON

#5



UMPUQA RIVER BRIDGE, REEDSPORT, OREGON #16



UMPUQA RIVER BRIDGE, REEDSPORT, OREGON

7



UMPUQA RIVER BRIDGE, REENSPORT, OREGON # 8



UMPUWA RIVER BRIDGE RECONSTRUCTION #9