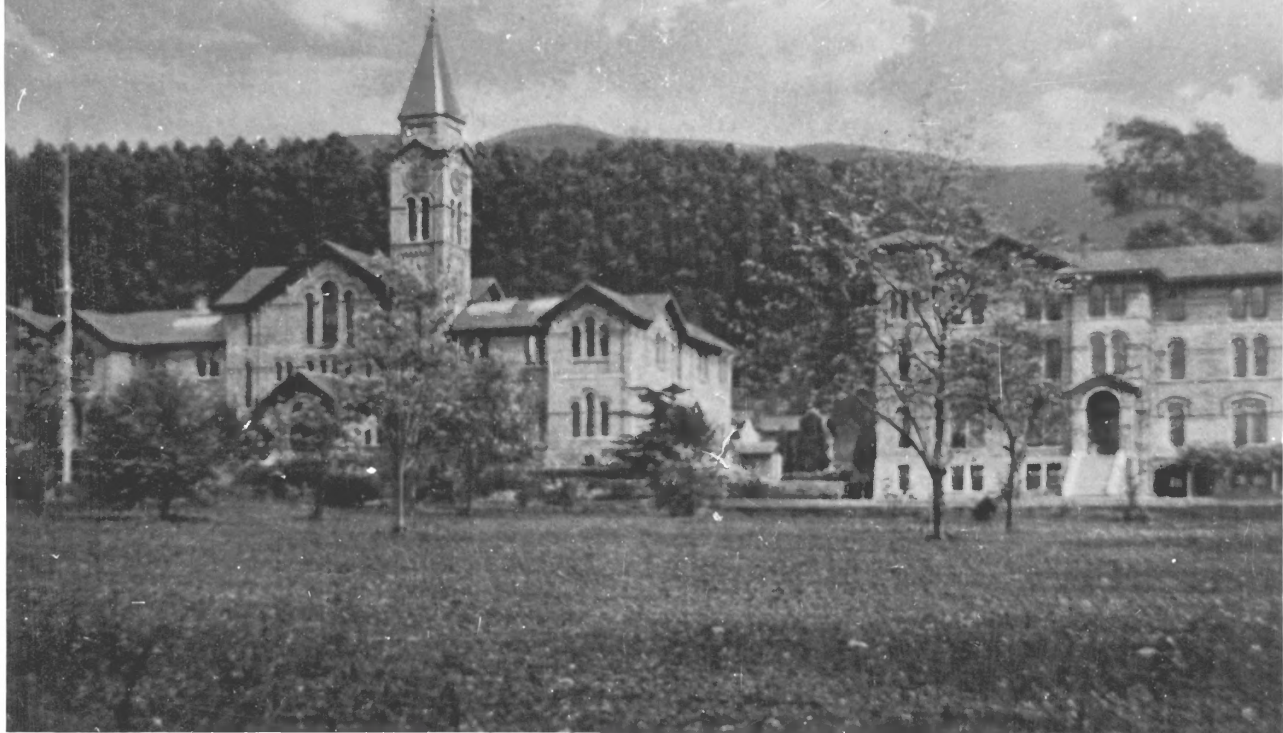


at, Dumb and Blind Institute, Berkeley, California.



#1 of 32

CAL. SCHOOL FOR DEAF, 2601
Warring St., Bkly., Cal. 94704
Looking east; ^{postcard} c. 1909 / photo,
Betty Marvin, 2646 Claremont
Ave., Berkeley, Cal. 94705 ①



CALIFORNIA SCHOOL FOR THE
DEAF, 2601 Warring Street,
Berkeley, California 94704.
Main entrance on Warring St.
looking east.

1979 photo: Anthony Bruce,
6 Encina Place, Berkeley,
California 94705.

#2 of 32

②



CALIFORNIA SCHOOL FOR THE
DEAF, 2601 Warring Street,
Berkeley, Cal. 94704. Stone
wall and wrought iron fence
along Warring St., north of
main entrance. 1979 photo:
Anthony Bruce, 6 Encina Place
Berkeley, California 94705

#3 of 32

3



CALIFORNIA SCHOOL FOR THE
DEAF, 2601 Warring Street,
Berkeley, California 94704.
Administration Building,
looking northeast. May 1980
photo: Betty Marvin, 2646
Claremont Ave., Berkeley
California 94705. #4 of 32

④

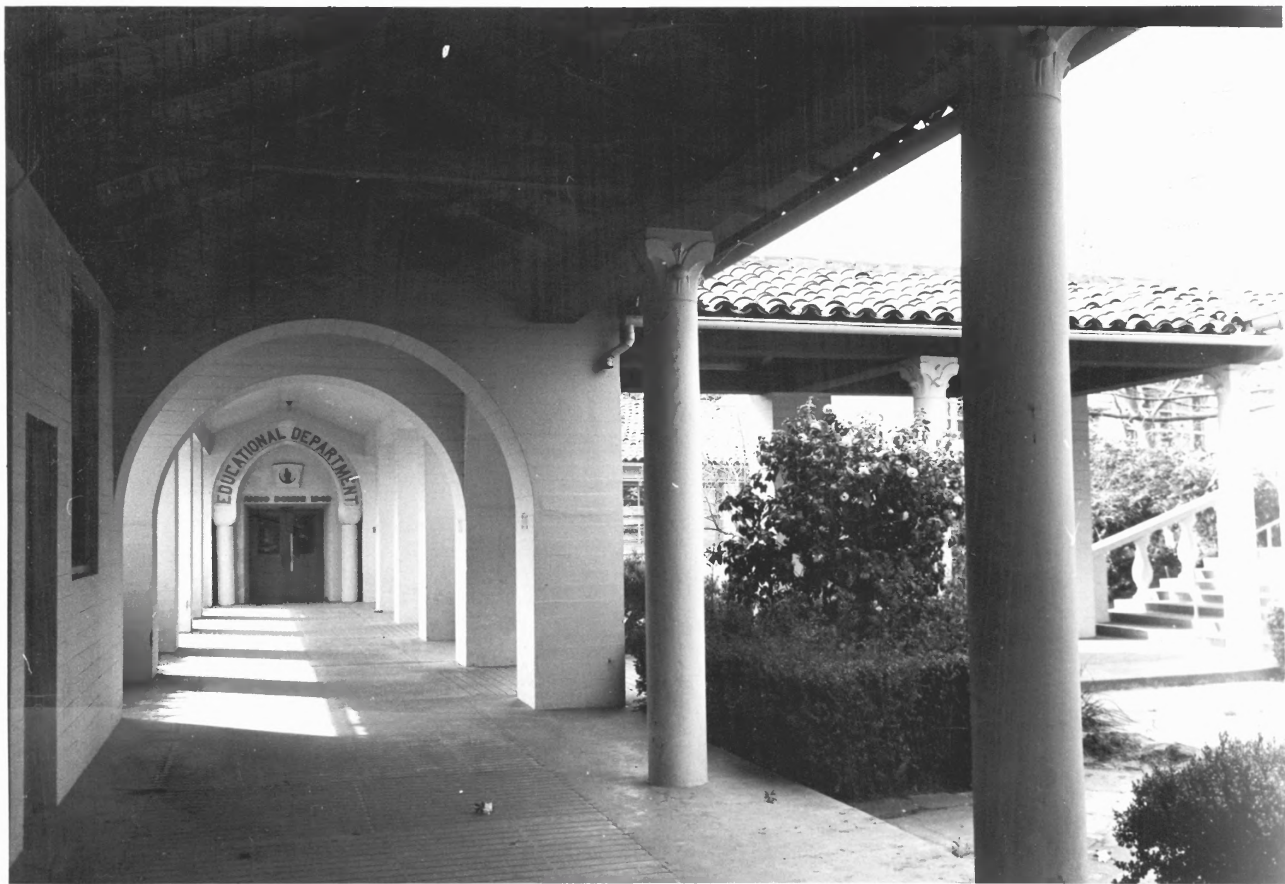


CAL SCHOOL FOR DEAF, 2601
Warring St., Bkly CA 94704. ⑤
Bear Hunt courtyard looking 32
NW Mar 1980: Betty Marvin.
2646 Claremont Bkly 94705



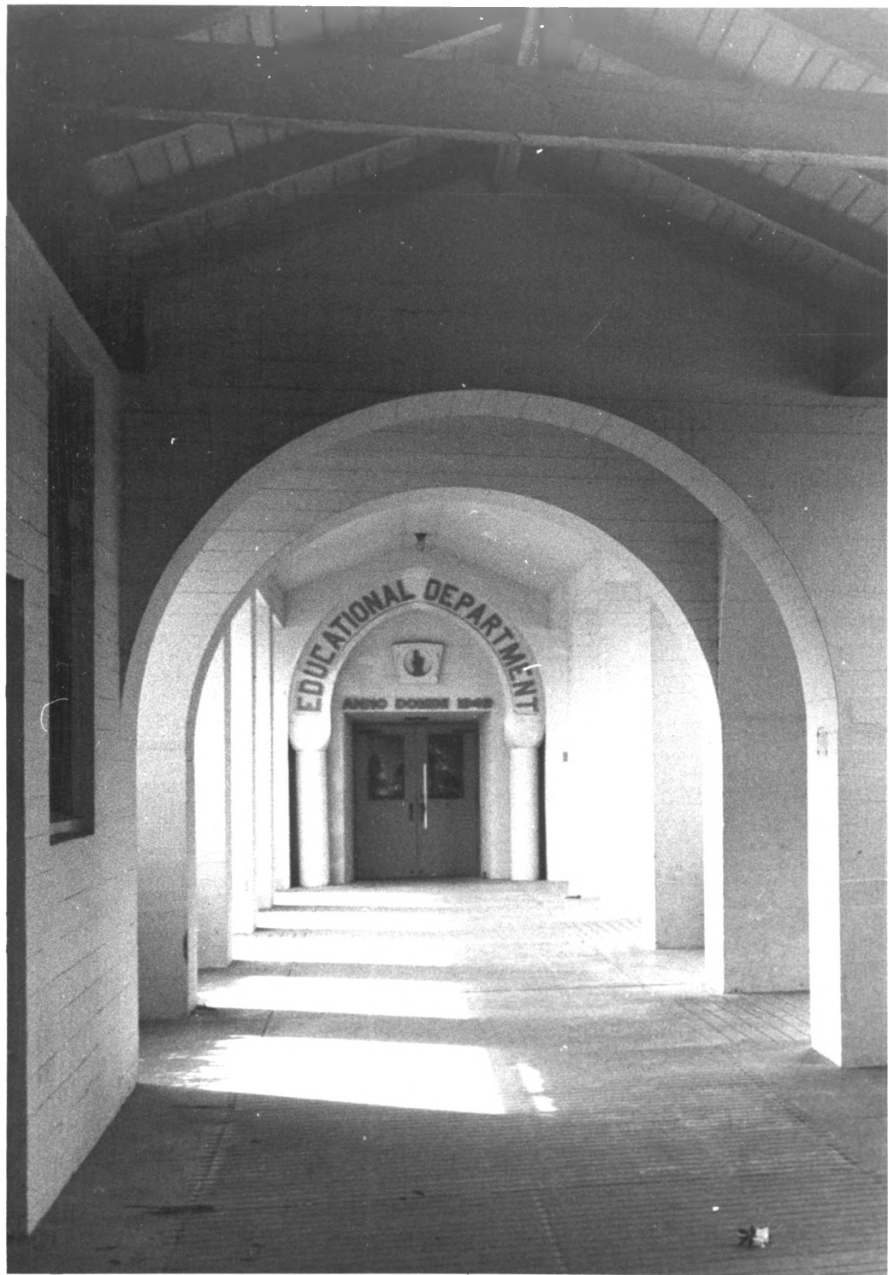
#6 of 32

CALIFORNIA SCHOOL FOR THE
DEAF, 2601 Warring St, Bkly,
CA94704. Bear Hunt looking N.
5/80: Betty Marvin, 2646
Claremont Ave, Bkly 94705 (6)



#7 of 32

CALIF. SCH. FOR THE DEAF. 2601 (7)
VARRING ST. 94704. LOGGIA SURROUND-
ING NORTH COURT OF ADMIN. BLDG (D-1)
CONNECTING D-1 TO STEVENSON
SECONDARY SCHOOL (D-2) + GRADY
HALL (D-6) PHOTO TAKEN LOOKING WEST
3/81, M. O'TOOLE, 2241 DURANT, 94704



#8 of 32

CAL SCHOOL FOR DEAF 2601 Warring Berk-
eley CA 94704; Stevenson Secondary Schoo:
Bldg. (D-2) East entrance; 1981 photo: ⑧
Mary) Toole 2241 Durant Bkly 94704



#9 of 32

CALIF. SCH. FOR THE DEAF, 2601
VARRING ST. 94704. LOGGIA SURROUND
ING SOUTH COURT OF ADMIN. BLDG(D-1)
CONNECTING D-1 TO ELEM. DINING (D-20)
PHOTO TAKEN LOOKING EAST. 3/81
M. O'TOOLE, 2241 DURANT #25, 94704 (9)



#10 of 32

CAL SCH. FOR DEAF, 2601 DERBY ST.
94204. NORTON HALL (D-26)
NORTON ELEVATION. 3/81; MARY (10)
O'TOOLE, 2241 DURANT, 94204



CALIF. SCH. FOR THE DEAF, 2601
WARRING ST. 94704. DIESTRELLA (D25)
ASSEMBLY HALL, ENTRY VESTIBULE
ON EAST FACADE, TAKEN FROM
COURT. PHOTO: 3/81 M. O'DOOLE
2241 DURANT #25, 94704

CALIF. SCH. FOR THE DEAF, 2601
WARRING ST. 94704. MONROE HALL

#11 of 32

(11)



CALIFORNIA SCHOOL FOR THE
DEAF, 2601 Warring Street,
Berkeley, California 94704.
Front Doors, D'Estrella
Auditorium, looking north.
May 1980 photo: Betty Marvin,
2646 Cla remont Avenue,
Berkeley, California 94705.



CALIFORNIA SCHOOL FOR THE
DEAF, 2601 Warring Street,
Berkeley, California 94704.
Door, D'Estrella Auditorium,
looking south. May 1980
photo, Betty Marvin, 2646
Claremont Avenue, Berkeley,
California 94705

(13) of 32



14 of 32

CALIF. SCH. FOR THE DEAF 2601 WARRING
ST. 94704. RUNDE HALL (D-27) EAST BLDG. (H)
#81, M. O'Toole, 2241 DURANT, 94704



#15 of 32

CALIF. SCH. FOR THE DEAF, 2601
VARRING ST. 94704. ELEMENTARY 15
DINING HALL (D-20) SOUTH FACADE
TAKEN FROM COURTYARD. 1981
PHOTO: M. O'TOOLE, 2241 DURANT, 94704



CALIF. SCH. FOR DEAF 2601
DERBY ST. 94704. CLARK HALL (D-15)

N. FACADE, MIRADOR DETAIL.

3/81, PHOTO: M. O'Toole, 2291 DURANT
94704. - (16) of 32



CAL. SCH. FOR THE DEAF, 2601
Warring St., 94704. Caldwell
Elem. Sch., south elev. (D-24)
w/ Kitchen Bldg. in back, (D-19);
from courtyard looking east.
March 1981; Mary O'Toole, 2241
Durant, #25, 94704.

(17) of 32



W. B. B. B.

CAL. SCHOOL FOR THE BLIND, 3001 Derby
St., Berkeley 94704; Admin. Assembly
Library Bldg., south facade, B-1; photo
c. 1930 by McCullough (copy neg. at
Berk. Arch Her. Assoc., 1930 Addison St.
Berkeley, California 94704.

#18 of 32

18



CALIF. SCH. FOR THE BLIND 3001 DERBY
ST. 94704. ADMINISTRATION BLDG. (B-1)
SOUTH FACADE. PHOTO: 3/81, M. O'TOOLE
2241 DURANT #25, 94704

#19 of 32

19

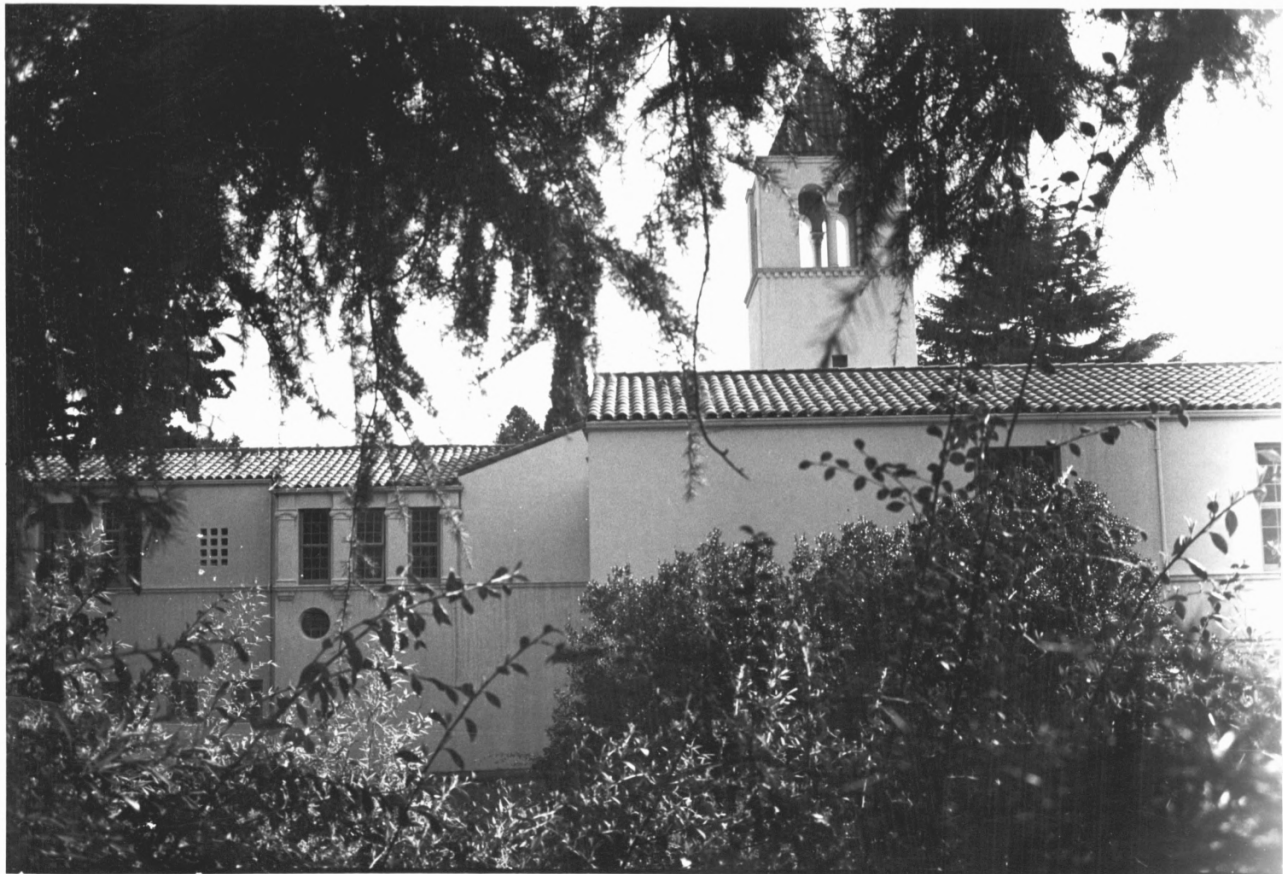


W. H. Shelley
Shelley

CALIFORNIA SCHOOL FOR THE DEAF, 3001
Derby Street, Berkeley, Calif. 94704.
Administration, Assembly & Library Bldg.
west facade (B-1); c. 1930 photo by
McCullough (copy neg. at office of the
Berkeley Architectural Heritage Assoc.,
1930 Addison Street, Berkeley, Calif.
94704.)

#20 of 32

20



CAL. SCH. FOR THE BLIND, 3001
Derby St. 94704, Admin. Assembly
Library Bldg. north facade, B-1
photo: 1981, Mary O'Toole, 2241
Durant, #25, 94704 *21 of 32 (2)



CALIFORNIA
SCHOOL
FOR THE
DEAF

CALIF. SCH. FOR BLIND, 3001 DERBY ST.
94704. ADMIN. ASSEMBLY, LIBRARY BLDG.
(B-1) MAIN ENTRY; SOUTH FACADE.
MARCH '81. PHOTO: M. O'TOOLE, 2241 DURANT
#25, 94704 (22) of 32



CALIF. SCHOOL FOR THE BLIND, 3001 Derby
Street, Berkeley, California 94704;
Administration, Assembly, Library Bldg.
interior of Assembly Hall, B-1; photo:
Betty Marvin (1980), 2646 Claremont
Avenue, Berkeley, California 94705

(23) of 32



W. H. ...

CAL. SCHOOL FOR THE BLIND, 3001 Derby
Street, Berkeley, California 94704. (24)
Vista Del Mar Girl's Residence (B-2);
south facade. c. 1930 Photo by Mc-
Cullough (copy neg. at Berkeley Archi-
tectural Heritage Assoc. Office, 1930
Addison Street, Berkeley CA 94704).

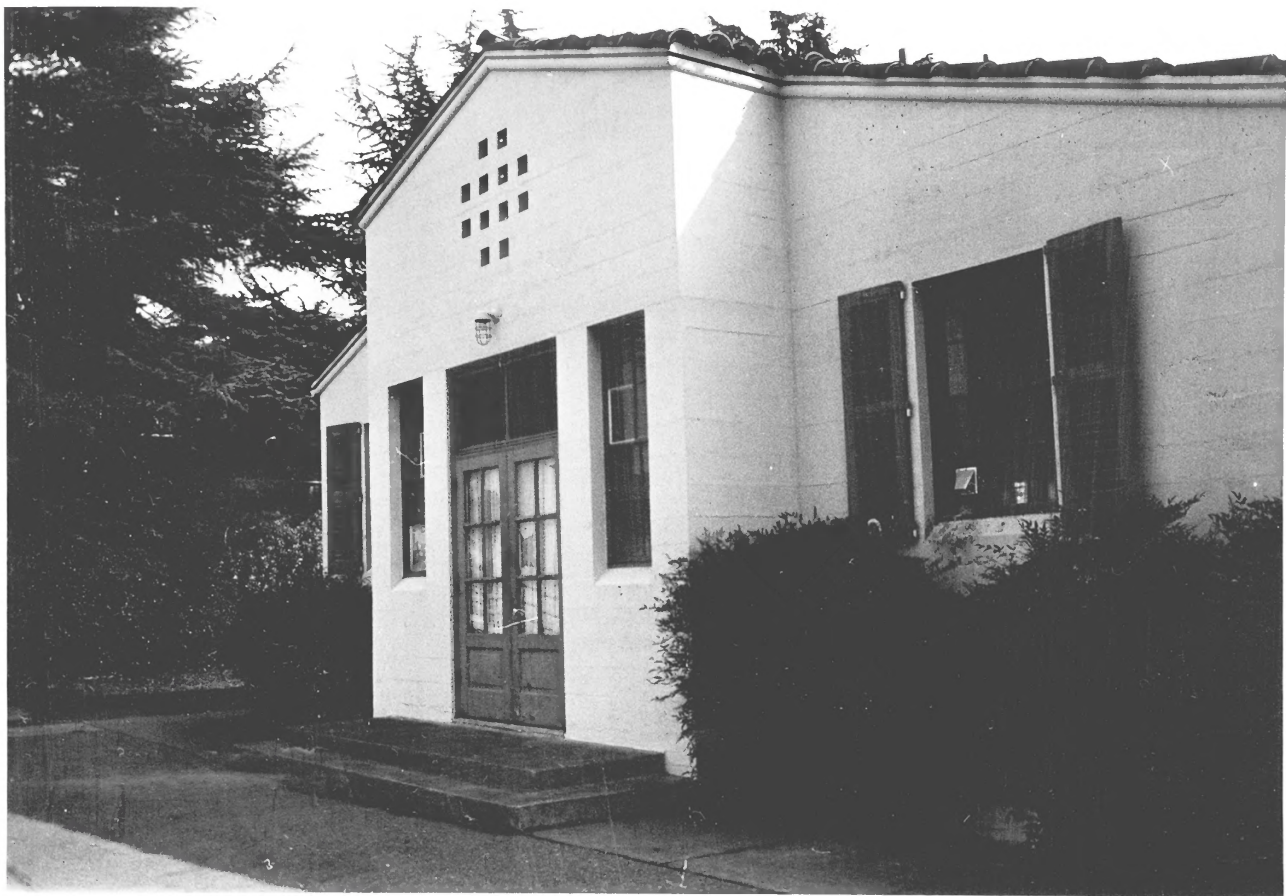
#24 of 32



M. S. ...
...

CALIFORNIA SCHOOL FOR THE BLIND, 3001
Derby Street, Berkeley, California
94704. Vista Del Mar Girls Residence
(B-2); view from the west. c. 1930
photo by McCullough (copy neg. at
Berkeley Architectural Heritage Assoc.
office, 1930 Addison Street, Berkeley,
California 94704).

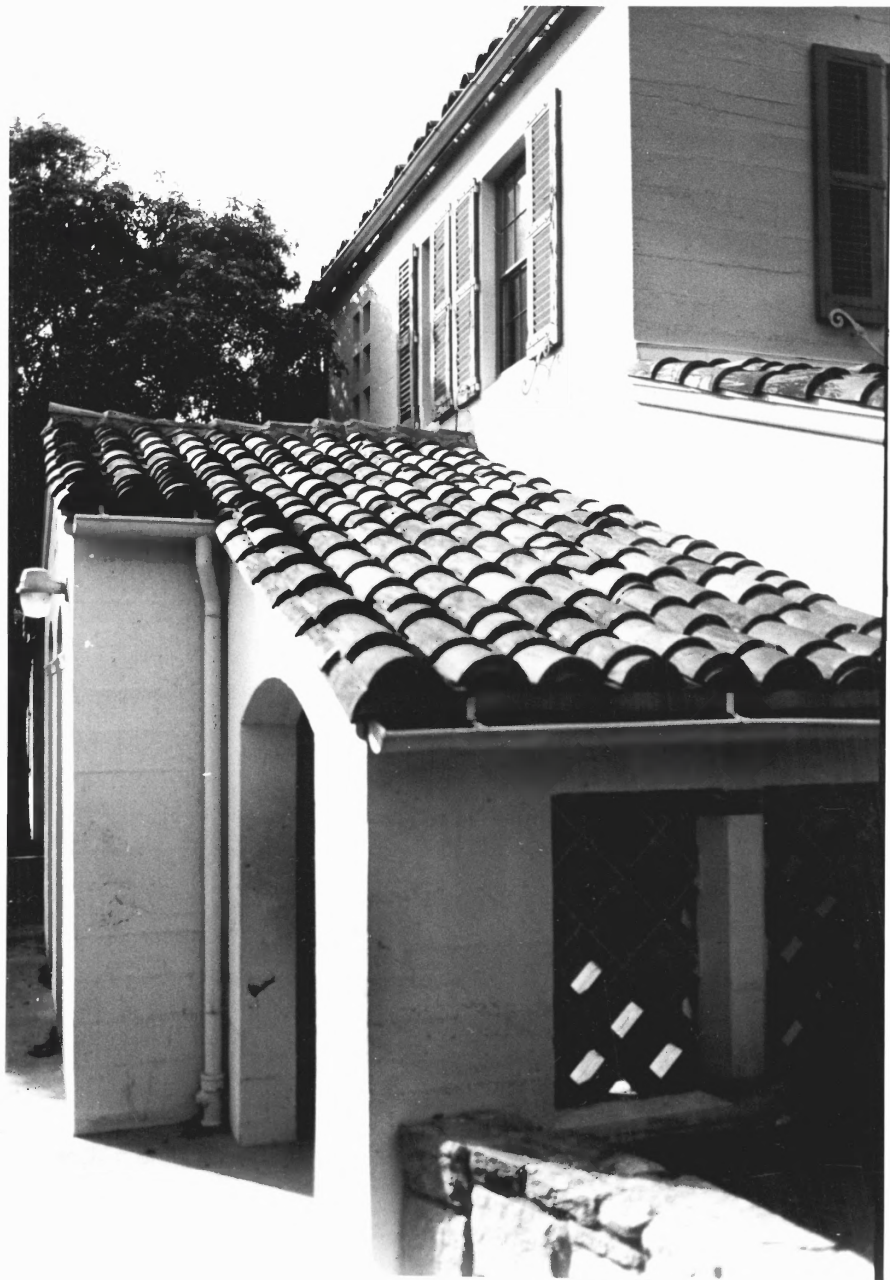
25 of 32



#26 of 32

26

CALIF. SCH. FOR THE BLIND, 3001
DERBY. 94704 MONROE HALL (B-4)
SOUTH FACADE, ENTRY. PHOTO: 3/81
M. O'TOOLE, 2291 DURANT, 94704



#27 of 32

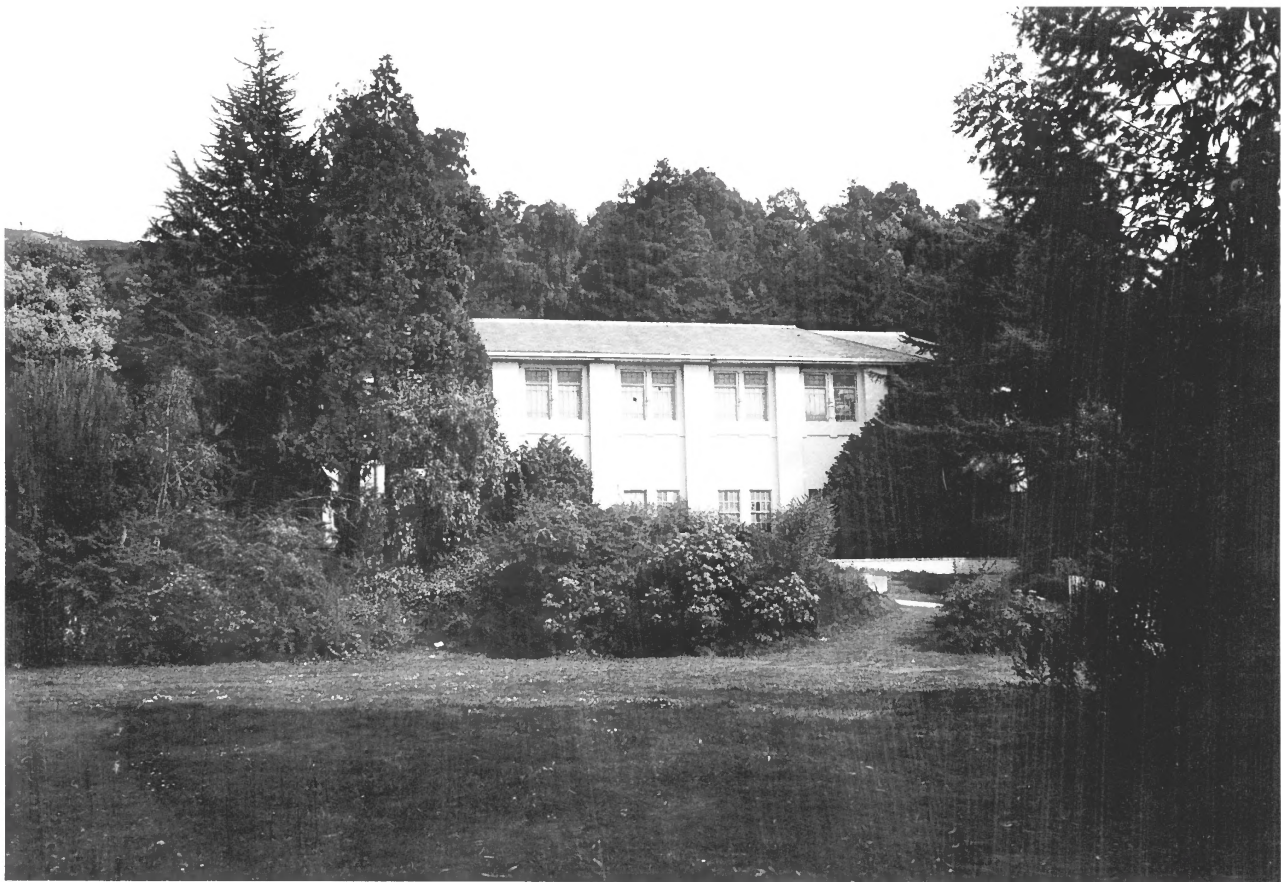
CALIF. SCH. FOR THE BLIND, 3001
PERLEY, 94704; DETAIL OF SOUTH
FACADE INFIRMARY (B-6)
LOOKING WEST. PHOTO: 3/81
M. O'TOOLE, 2241 DURANT, 94704

(27)



28 of 32

CALIF. SCH. FOR THE BLIND, 3001 (28)
DERBY ST, 94704. INFIRMARY, ⁸⁰⁶SOUTH
FACADE, WINDOW DETAIL, PHOTO: 3/81
M. OITOLE, 2241 DURANT #25, 94704



29 of 32

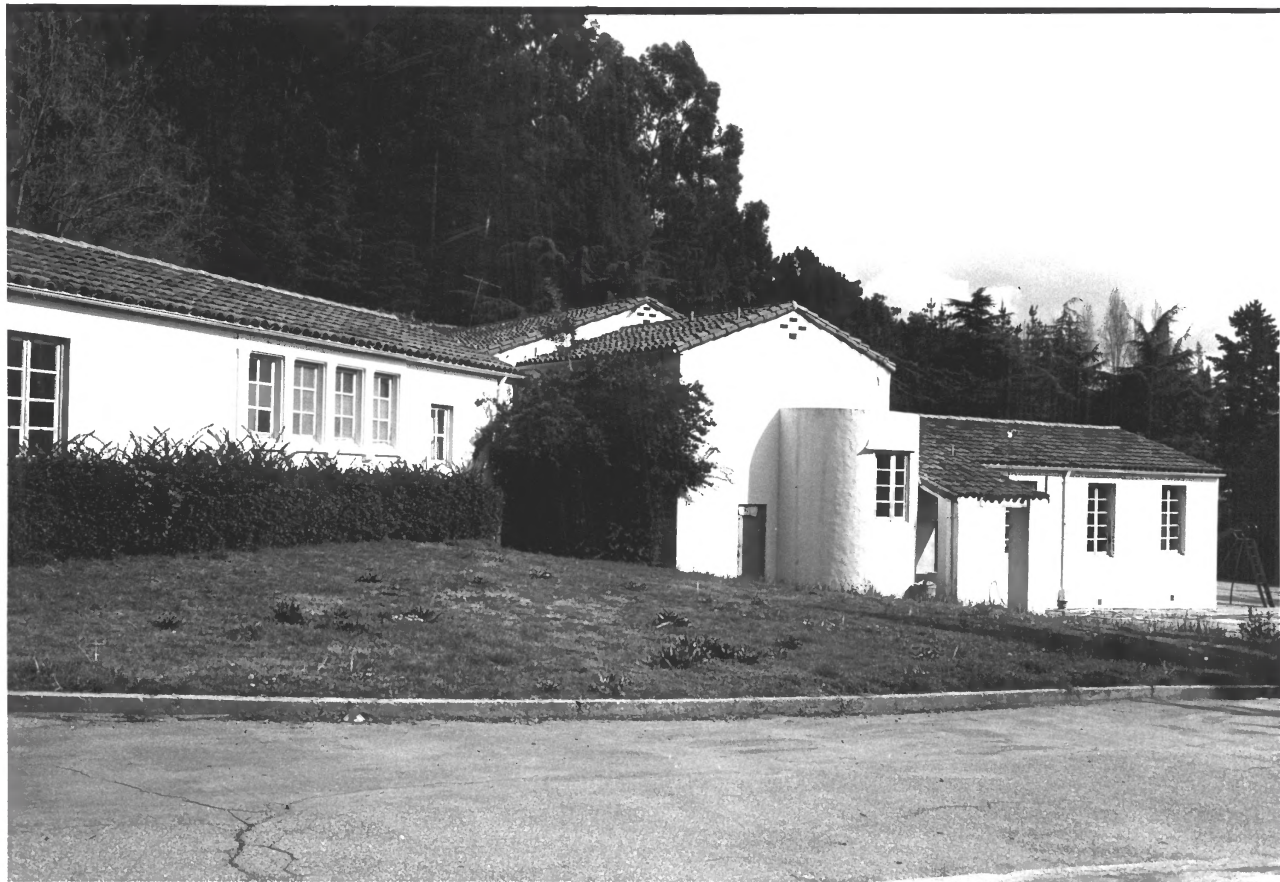
CAL SCH. FOR THE BLIND, 3001 (29)
Derby St. 94704. Gymnasium, B-9
west facade' photo: 1981, Mary
O'Toole. 2241 Durant. 25. 94704



CALIFORNIA SCHOOL FOR THE
BLIND, 3001 Derby Street,
Berkeley, California 94704.
Gymnasium Building from the
southwest.

1979 photo: Anthony Bruce,
6 Encina Place, Berkeley,
California 94705.

of 32
30



CAL. SCH. FOR THE BLIND, 3001
Derby St. 94704. Wilkinson Lodge of 34
B-11. west facade. photo. Mary
O'Toole, 2241 Durant, #25, 94704 (31)



CAL. SCH. FOR THE BLIND, 3001
Derby St. 94704, Wilkinson Lodge
south facade entry porch. Photo:
1981, M. O. Toole, 224 F Durant 94704

32 of 32