



South First National Bank Block (1887)  
241-247 Commercial Street NE  
Salem, Marion County, Oregon

John Honey Photo, 1982  
P.O. Box 229  
Salem, OR 97208

1 of 11

East (front) elevation of southernmost  
unit (44 feet) and all that remains of  
an historic 155-foot long building.



First picture of the completed block  
between Court and Commercial,  
taken Sept 1887 (By Cherrington?)  
Left is the Starkey-McCully  
block, center, beginning at the  
telephone pole, the new First  
National Bank Block, and  
in the distance with the  
tower, the First National Bank  
Building.

South First National Bank Block (1887)  
241-247 Commercial Street NE  
Salem, Marion County, Oregon

2 of 11  
Historic view, September, 1887, possibly  
by Salem photographer T. J. Cherrington.  
Looking north at the west side of  
Commercial Street, between Court and

Chemeketa Streets, at the 120-foot long  
facade of the Starkey-McCully Building  
(1867), the 155-foot long facade of the  
South First National Bank Block, and  
the First National Bank Building (c.1884-

1885), with its corner tower and 45-foot  
frontage on Commercial Street.

Oregon Historical Society Neg. #0170G002  
1230 SW Park Avenue  
Portland, OR 97205

THIS PHOTOPRINT IS ISSUED  
FOR REFERENCE USE ONLY  
PERMISSION FOR EACH  
REPRODUCTION MUST BE  
REQUESTED.

Oregon Historical Society  
1230 S W PARK AVENUE  
PORTLAND, OREGON 97205

NEGATIVE NUMBER:

0170G002



DR. WENGER'S  
**DRUG STORE.**

**WENGER & CHERRINGTON.**  
**MUSIC HOUSE**  
Pianos & Organs

**D. WHITE & SONS.**  
Paints & Oil Suppliers

**TOYS** (partially visible)

South First National Bank Block (1887)  
241-247 Commercial Street NE  
Salem, Marion County, Oregon

3 of 11

Historic view, 1908 post card.

The only units of the South First National Bank Block now remaining are those occupied by Dr. Stone's Drug Store and

Wenger and Cherrington's Music House.

Alfred C. Jones photo copy, 1982

836 Church Street NE  
Salem, OR 97301

Western Auto Supply Co.  
STORES ALL OVER THE WEST.

Auto Supply Co. Western Auto Supply Co.

NASH  
FURNITURE

ARMY STORE

PIGGY WIGGLY

CROSS  
ICE CREAM

EATS AND DRINKS  
DAVE TRADE

PIGGY WIGGLY



South First National Bank Block (1887)  
241-247 Commercial Street NE  
Salem, Marion County, Oregon

4 of 11

Historic view, July 4, 1939, Cronise  
Studio. The only units of the South First  
National Bank Block now remaining are

those occupied by the Piggly-Wiggly  
Grocery and Meat Market. The neighboring  
Starkey-McCully Building (1867) has  
undergone varying degrees of facade  
alteration. In contrast, only the

ground story shop fronts of the South  
First National Bank Block have been  
modified.

Oregon Historical Society Neg. #65367  
1230 SW Park Ave., Portland OR 97205

REOVERSAND.

Oregon Historical Society

1230 S W PARK AVENUE

PORTLAND, OREGON 97205

NEGATIVE NUMBER:

65367

*NW corner Court & Commercial  
with McCully - Starkey  
Building. July 4, 1939*

IS ISSUED  
SE ONLY.  
EACH  
BE





John Honey Photo, 1982  
P.O. Box 229  
Salem, OR 97208

South First National Bank Block (1887)  
241-247 Commercial Street NE  
Salem, Marion County, Oregon

5 of 11

Perspective view of remaining unit:  
East and north elevations. The best-  
preserved portion of the Starkey-McCully

Building (1867) adjoins the nominated  
property on the south.

A black and white photograph of a multi-story brick building with a white-painted ground floor. The ground floor is labeled "OREGON CARPET WAREHOUSE" in large, bold, sans-serif letters. The building has several windows, some with multiple panes. In the foreground, several cars are parked on the street, including a white sedan, a dark pickup truck, and a white station wagon. A street sign is visible on the left side of the image.

OREGON  
CARPET  
WAREHOUSE

South First National Bank Block (1887)  
241-247 Commercial Street NE  
Salem, Marion County, Oregon

John Honey Photo, 1982  
P.O. Box 229  
Salem, OR 97208

6 of 11

West elevation, viewed from back alley,  
showing later warehouse addition.

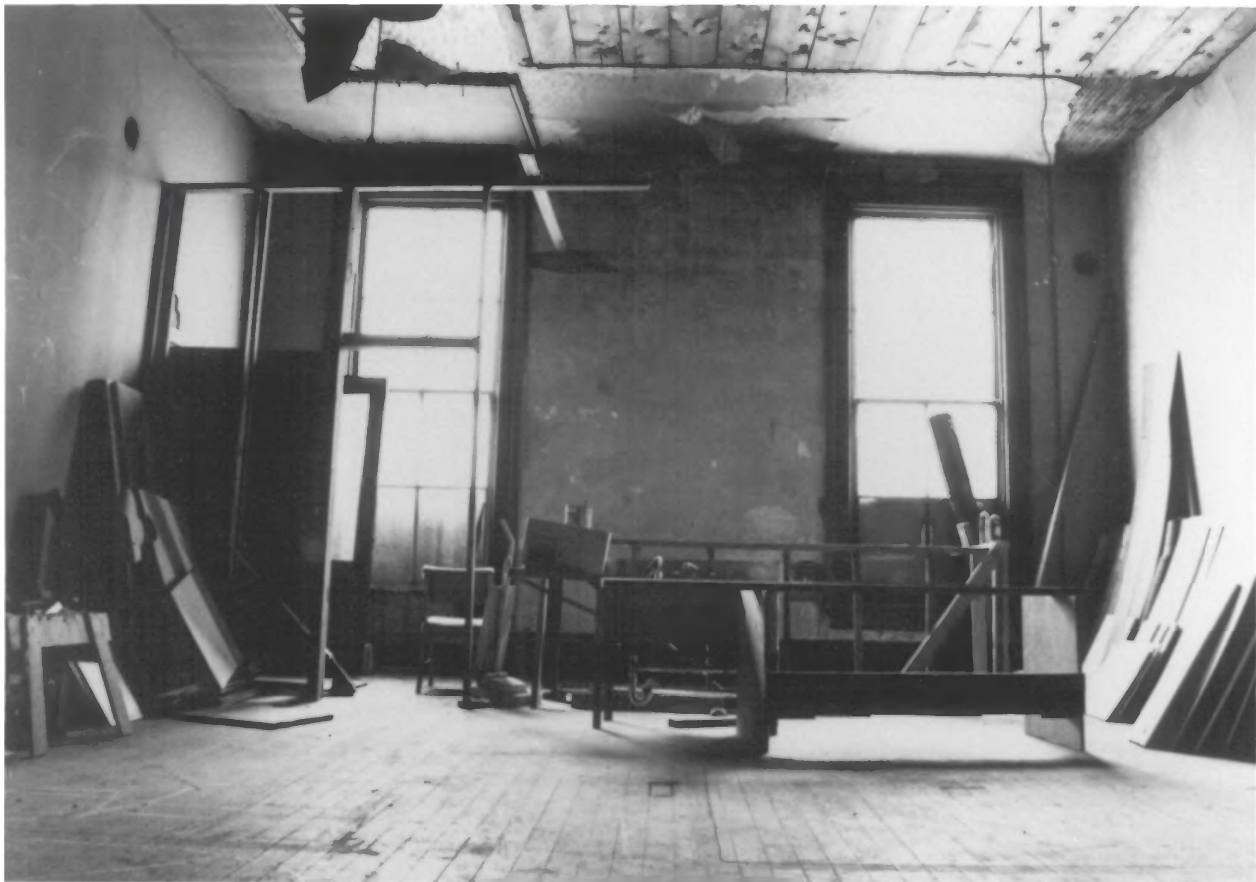


South First National Bank Block (1887)  
241-247 Commercial Street NE  
Salem, Marion County, Oregon

John Honey Photo, 1982  
P.O. Box 229  
Salem, OR 97208

7 of 11

Interior view of ground story remodeled as a single, large retail space in 1928. Looking west. Columns took the place of longitudinal wall which separated ground story space into two stores.



South First National Bank Block (1887)  
241-247 Commercial Street NE  
Salem, Marion County, Oregon

John Honey Photo, 1982  
P.O. Box 229  
Salem, OR 97208

8 of 11

Interior view of rear rooms of the  
northerly apartment suite. Looking  
west at rear wall.





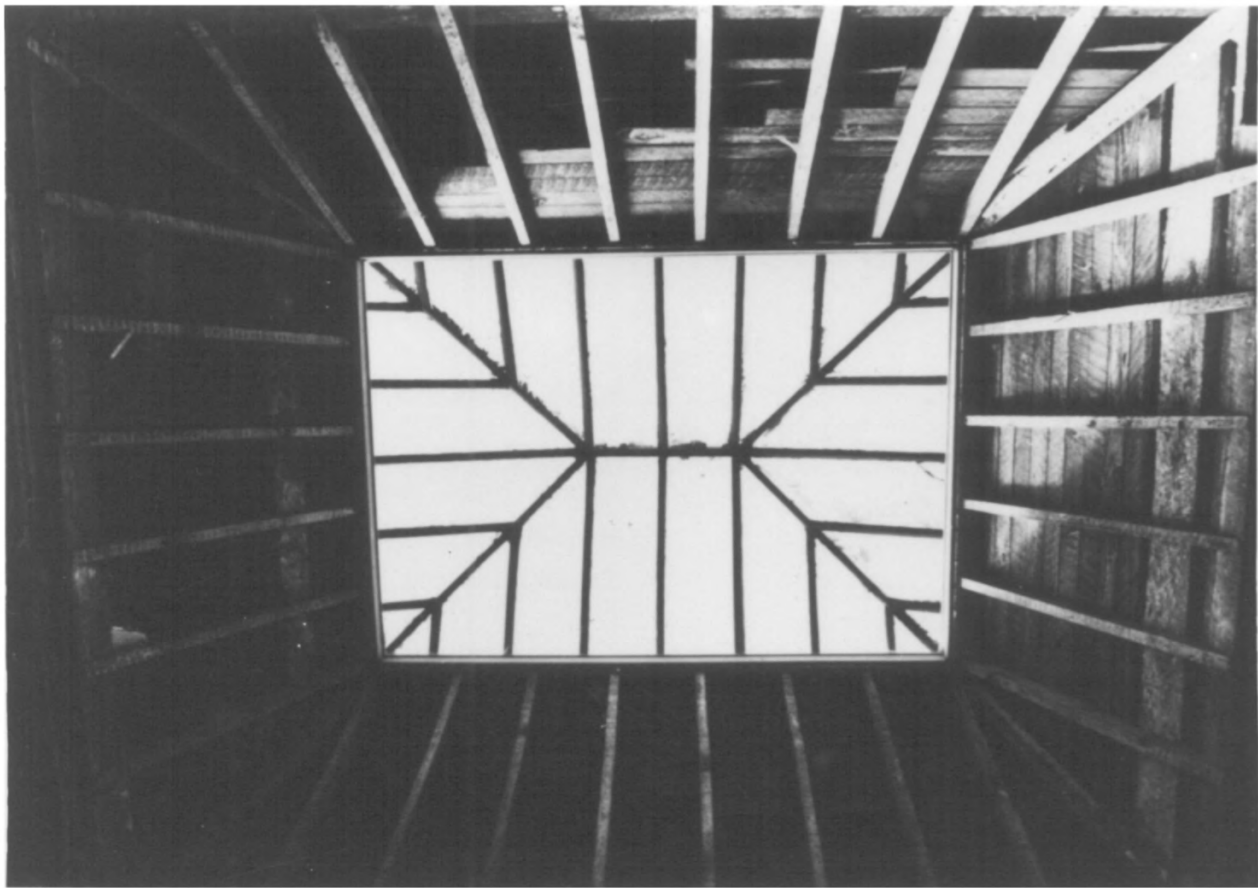
South First National Bank Block (1887)  
241-247 Commercial Street NE  
Salem, Marion County, Oregon

John Honey Photo, 1982  
P.O. Box 229  
Salem, OR 97208

9 of 11

Interior view of cross-axial corridor  
in second story, northerly suite. Look-  
ing north at opening in north wall which

once connected the existing unit with  
the northerly portion of the South First  
National Bank Block.



South First National Bank Block (1887)  
241-247 Commercial Street NE  
Salem, Marion County, Oregon

John Honey Photo, 1982  
P.O. Box 229  
Salem, OR 97208

10 of 11

Skylight in second story corridor,  
northerly section.



CAPITAL BUSINESS COLLEGE.

BANK

South First National Bank Block (1887)  
241-247 Commercial Street NE  
Salem, Marion County, Oregon

11 of 11

Historic view, c. 1900. Source unknown. First National Bank (c. 1884-1885) is viewed from the intersection of Commercial and Chemeketa Streets. Looking southwesterly. The South First National Bank Block adjoins the Bank on the south. None of the units shown in this photograph exists today.