



San Diego Rowing Club

San Diego, California

Photographer Unknown C. 1900

Location of negative unknown

West view

No. 1

SAN DIEGO COUNTY

DEC 5

1978

AUG 27 1979



SAN DIEGO  
ROWING CLUB  
August 1908

San Diego Rowing Club  
San Diego, California  
Photographer Unknown C. 1908  
Location of negative unknown  
West view

No. 2

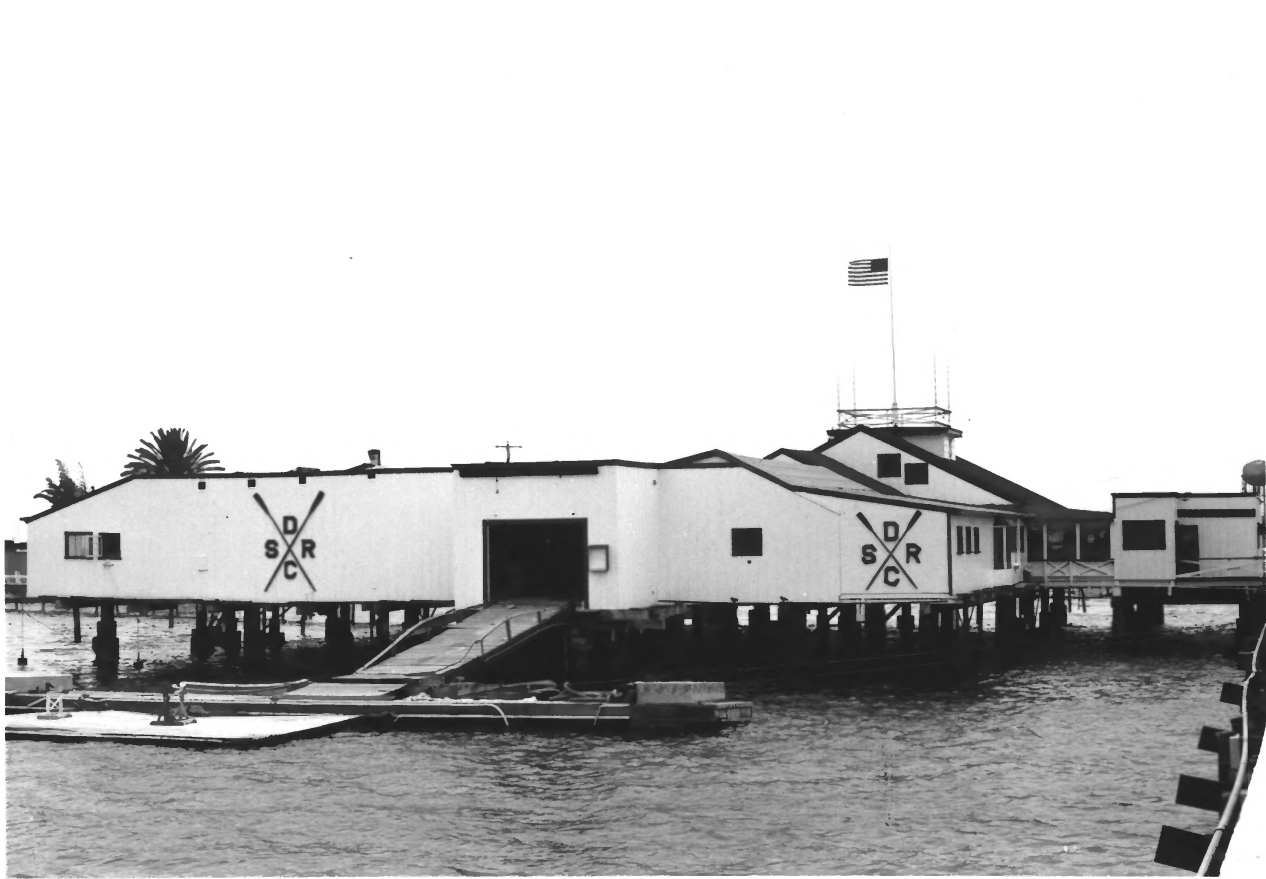
SAN Diego

DEC 5 1978  
COUNTY

AUG 27 1970

30





~~SECRET~~

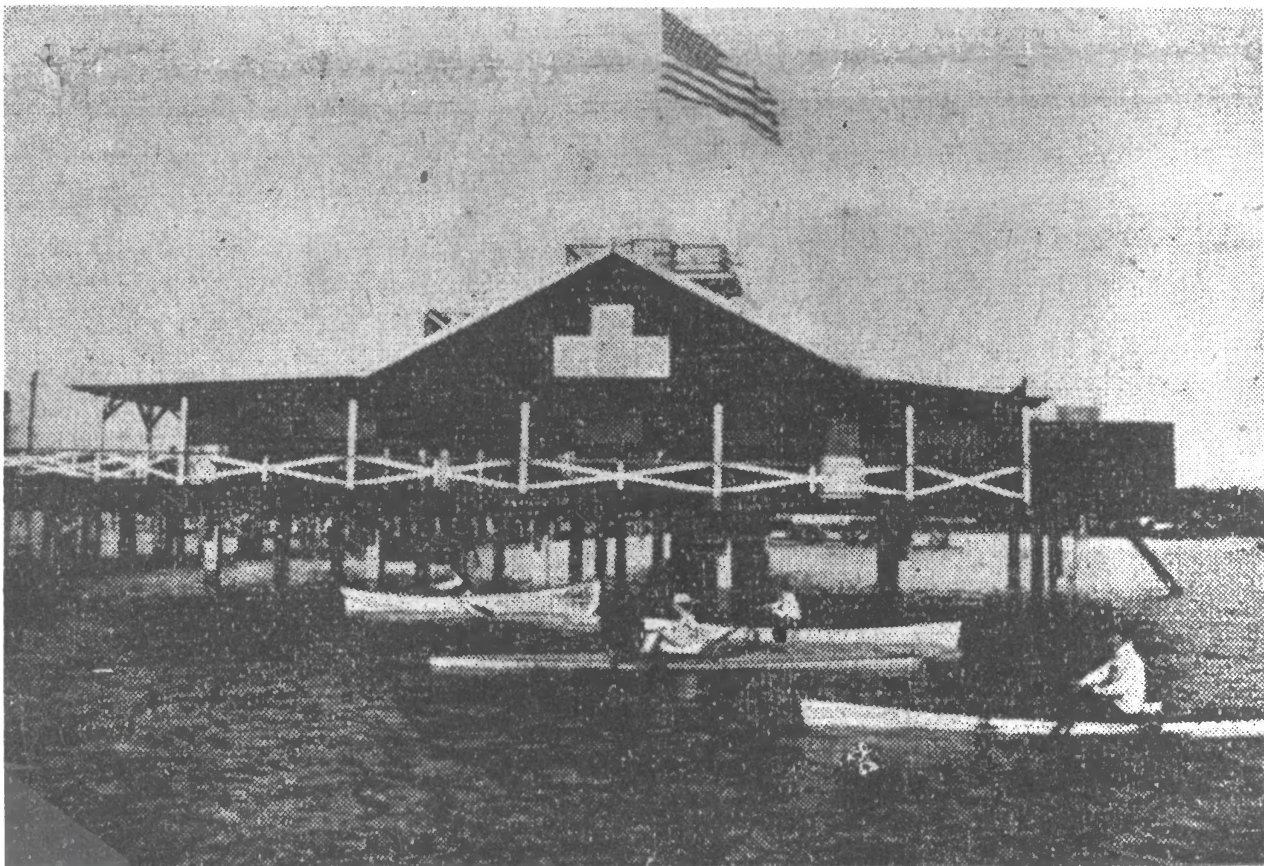
AUG 30 1970

San Diego Rowing Club  
San Diego, California  
Photographer Unknown 1978  
Location of negative unknown  
West view  
No. 3

SAN Diego Co.

DEC 5 1978

AUG 27 1979



SAN DIEGO COUNTY

San Diego Rowing Club

San Diego, California

Photographer Unknown c. 1900

Location of negative unknown

East view

No. 4

AUG 17 1978

DEC 5 1978

SAN DIEGO ROWING CLUB



SAN DIEGO ROWING CLUB

SAN DIEGO COUNTY

PHOTO 5

**AUG 30 1979**

AUG 30 1979

**AUG 27 1979**



1915

S. D. ROWING CLUB



SAN DIEGO ROWING CLUB

SAN DIEGO COUNTY

**AUG 30 1979**

PHOTO 6

**AUG 27 1979**  
**AUG 30 1979**





RC-4-C

1977 New Year's Day Swim

STEPHEN BLAKE PHOTO  
326 Broadway, Rm. 201  
San Diego, CA 92101  
(714) 233-8088  
Order Reprints Anytime

San Diego Rowing Club  
252 E. Harbor Drive, San Diego, CA  
Photographer: Stephen Blake  
Negative at 326 Broadway, Room 201, San Diego,  
CA 92101  
January 1, 1977  
Southeast face of building. Annual New Year's  
Day swim.

Photo No. 701001

AUG 30 1979

7

AUG 1 1979

San Diego County



**S. D. ROWING CLUB**



*This photo (dated July 12, 1936) shows  
the 8' extension built in 1932 to  
accommodate the first 8-oared  
shells bought by the Club.*

San Diego Rowing Club  
252 E. Harbor Drive, San Diego, CA  
Photographer not given  
negative at San Diego Rowing Club  
July 12, 1936

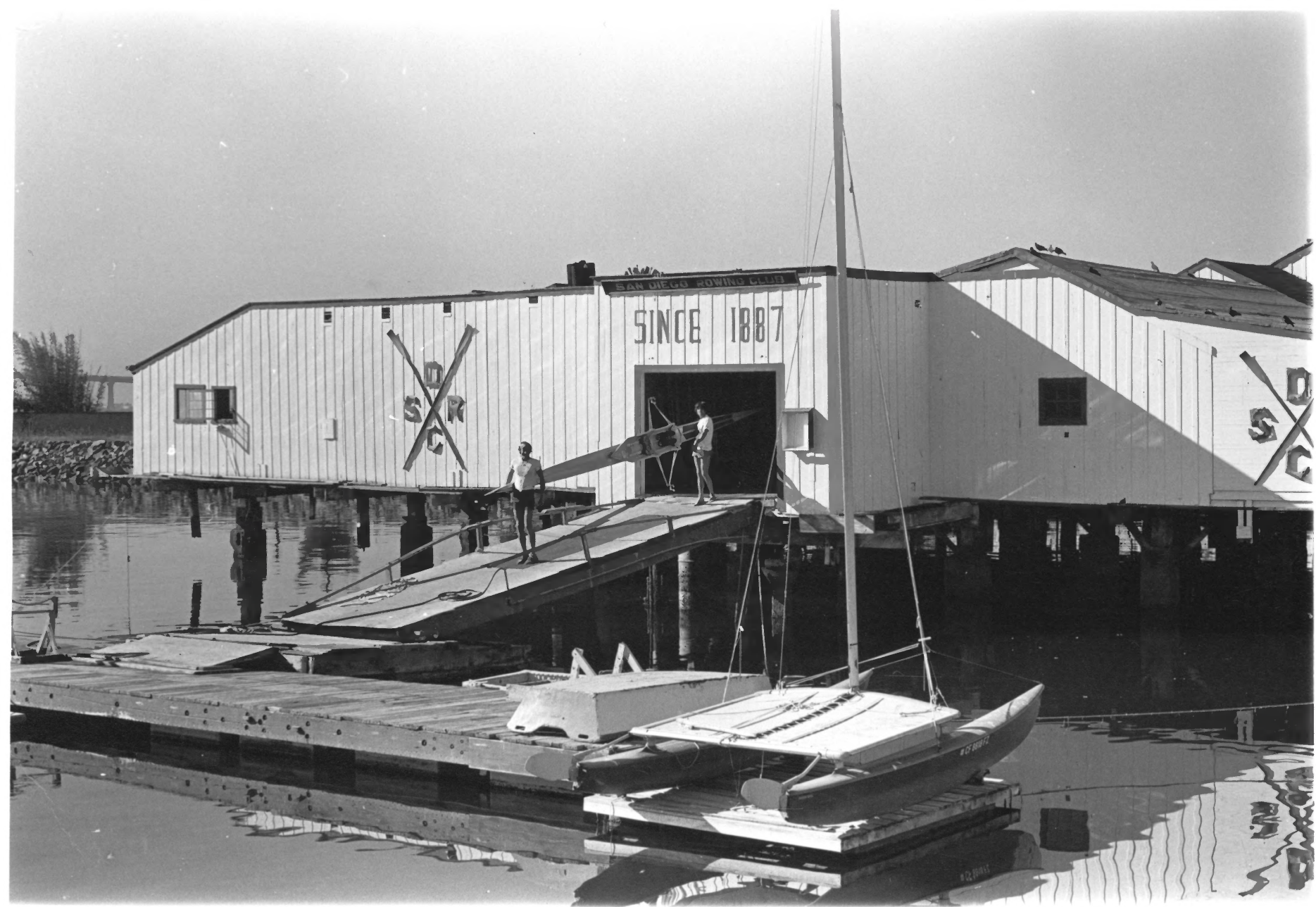
Historic photograph. = Close up of northeast  
side showing 8' extension built in 1932 to  
accommodate the first 8-oared shells bought

by \_\_\_\_\_  
Photo No. 8

AUG 30 1979

*San Diego County*

AUG 1 1979



San Diego Rowing Club

*San Diego Co.*

252 E. Harbor Drive, San Diego, CA

Photographer not given

AUG 30 1979

negative at San Diego Rowing Club

1978

View of northeast side

Photo No. 806553

AUG 1 1979

9

SAN DIEGO ROWING CLUB





Aaron:

This photo (1929-1930) shows the Clubhouse virtually unchanged since the 1913 addition (Phase III). The next change (1932) added the 8' extension to the boat entrance.

San Diego Rowing Club  
252 E. Harbor Drive, San Diego, CA  
Photographer not given

negative at San Diego Rowing Club

Approximately 1929 or 1930

Historic photo showing northeast side of Rowing Club

Photo No. 10

San Diego Co.

AUG 30 1979

AUG 1 1979





SAN DIEGO  
ROWING CLUB  
August 1908

August 1978

Photo 506341

(This was reproduced from an original photograph, which was assigned the same serial.)

This is the north face of the SD Rowing Club. The central foreground portion contains the rowing boats, which are still hauled from the float. The outdoor boxing area is now enclosed. Skylights illuminate clothing locker spaces today. Administrative & carpenter shop areas are on the right (west) side of the building.

The pier structures in the background are today occupied by land fill, as is shown on the property maps, Sheet 19 of 2E

San Diego Rowing Club  
252 E. Harbor Drive, San Diego, CA

Photographer not given

negative at San Diego Rowing Club

August 1908

Historic view showing northeast side of building.

Photo No. 506341

AUG 1 1979

AUG 30 1979

San Diego Co.



San Diego Rowing Club

252 E. Harbor Drive, San Diego, CA

Photographer not given

negative at San Diego Rowing Club

June 1978

Southeast corner

Photo No. 812340

12

*San Diego* AUG 30 1979  
AUG 1 1979  
*County*



708007

Aug 1977

San Diego Rowing Club

San Diego Rowing Club  
252 E. Harbor Drive, San Diego, CA  
Photographer not given

*San Diego Co.*

negative at San Diego Rowing Club

August 1978

Northeast side. View similar to historic photo (506341) of 1908.

AUG 30 1979

Photo No. 708007

AUG 1 1979

13





708010 Aug 1977

San Diego Rowing Club

San Diego Rowing Club  
252 E. Harbor Drive, San Diego, CA

*San Diego Co.*

Photographer not given

negative at San Diego Rowing Club

August 1977

**AUG 30 1979**

Southwest side, prior to replacement of fence.  
New landfill shows in foreground.

Photo No. 708010

**AUG 1 1979**

*74*





708009 Aug 1977

San Diego Rowing Club

San Diego Rowing Club  
252 E. Harbor Drive, San Diego, CA  
Photographer not given  
negative at San Diego Rowing Club  
August 1977

San Diego Co.

AUG 1 1979

southeast side, used as swimming area. Card &  
exercise rooms on right. Locker rooms on left.  
Photo No. 708009

AUG 30 1979

15



708002 Aug 1977

San Diego Rowing Club

San Diego Rowing Club  
252 E. Harbor Drive, San Diego, CA  
Photographer not given  
negative at San Diego Rowing Club  
August 1977

AUG 30 1979

*San Diego  
County*

Northwest side with entrance hall in center  
Photo No. 708002

AUG 1 1979

16



708004 Aug 1977

San Diego Rowing Club

San Diego Rowing Club  
252 E. Harbor Drive, San Diego, CA  
Photographer not given  
negative at San Diego Rowing Club  
August 1977

AUG 30 1979

AUG 1 1979

Northwest corner. Office windows are to left  
of main entrance, where men are standing.

Photo No. 708004

*San Diego County*

*17*



708011 Aug 1977

San Diego Rowing Club  
252 E. Harbor Drive, San Diego, CA  
Photographer not given  
negative at San Diego Rowing Club  
August 1977

*San Diego County*

AUG 30 1979

Southeast side, prior to replacement of fence.  
Photo No. 708011

AUG 1 1979

18





8/1966  
608001

San Diego Rowing Club

San Diego Rowing Club  
525 E. Harbor Drive, San Diego, CA

San Diego Co.

Photographer not given  
negative at San Diego Rowing Club  
August 1966

Southeast face of building. Enclosed sundeck  
on left. Locker rooms behind blue wall. Two  
rooms are on the right.

Photo No. 608001

19

AUG 30 1979

AUG 1 1979



708019 Aug 1977

San Diego Rowing Club

San Diego Rowing Club

252wE. Harbor Drive, San Diego, CA

Photographer Not given

negative at San Diego Rowing Club

August 1977

Northwest corner at the main entrance. Carpenter shop and office windows at left.

Photo No. 708019

*San Diego Co.,*  
AUG 30 1979

JG 30 1979

AUG 1 1979

*20*



7 08001

Aug 1977

San Diego Rowing Club

San Diego Rowing Club  
525 E. Harbor Drive, San Diego, CA  
Photographer not given  
negative at San Diego Rowing Club  
August 1977

*San Diego Co.*

Southwest corner. Glass pane area looks into  
dining/dance room. Ladies' locker space has  
two small windows. Exterior glass panes

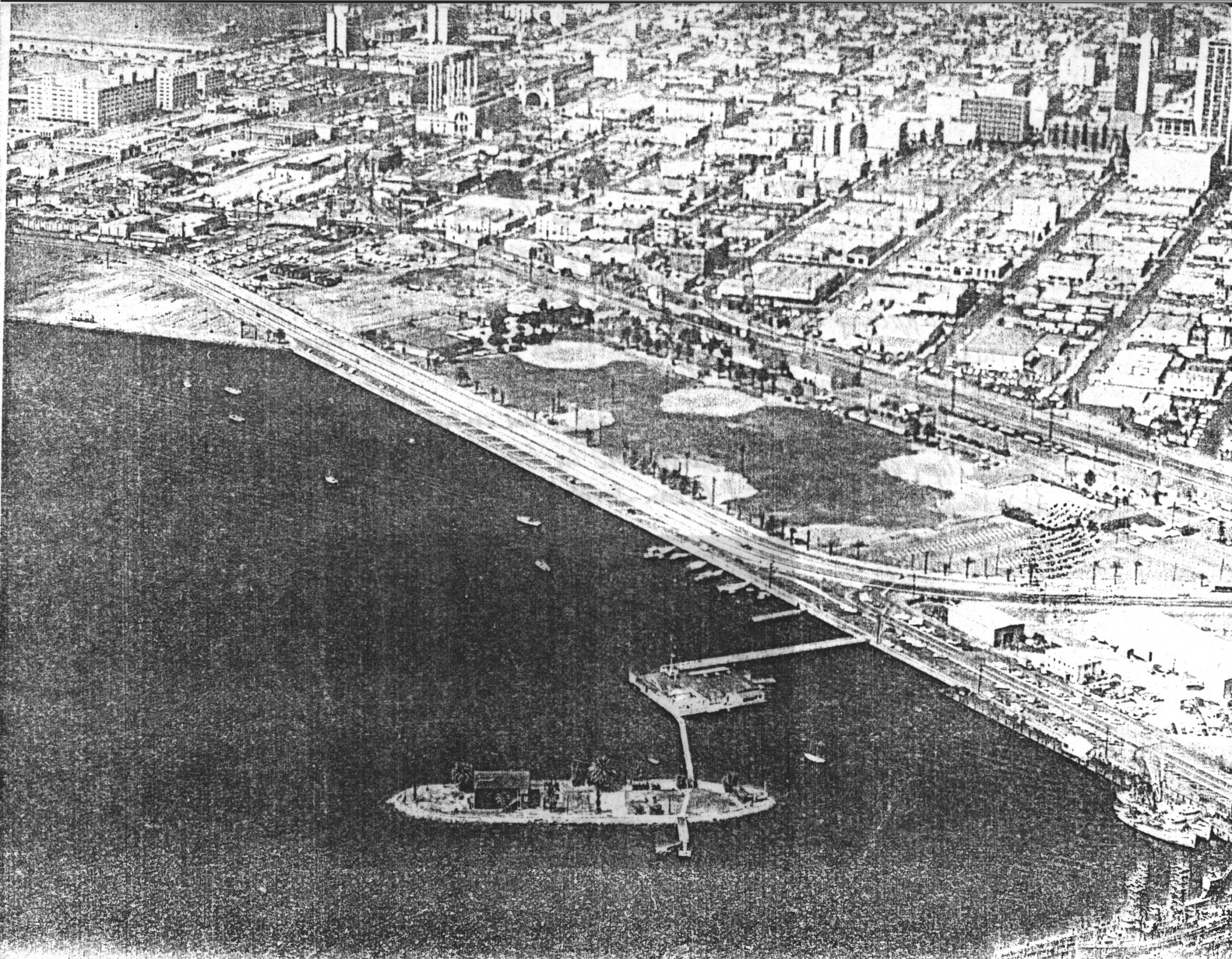
enclose sundeck on right

Photo No. 708001

AUG 30 1979

2 /  
AUG 1 1979





15 March 1979

Copied from Serial 50 5575, dated 1975.

The view shown here is the San Diego Rowing Club boat house, which has been nominated for application & designation in the National Register Inventory, and Brennan Island handball courts building as they appeared in 1975. Land fill has completed the enclosure of these buildings as can be seen by examining Marine Ports South Peninsula Drawing 550-MB of December-1976

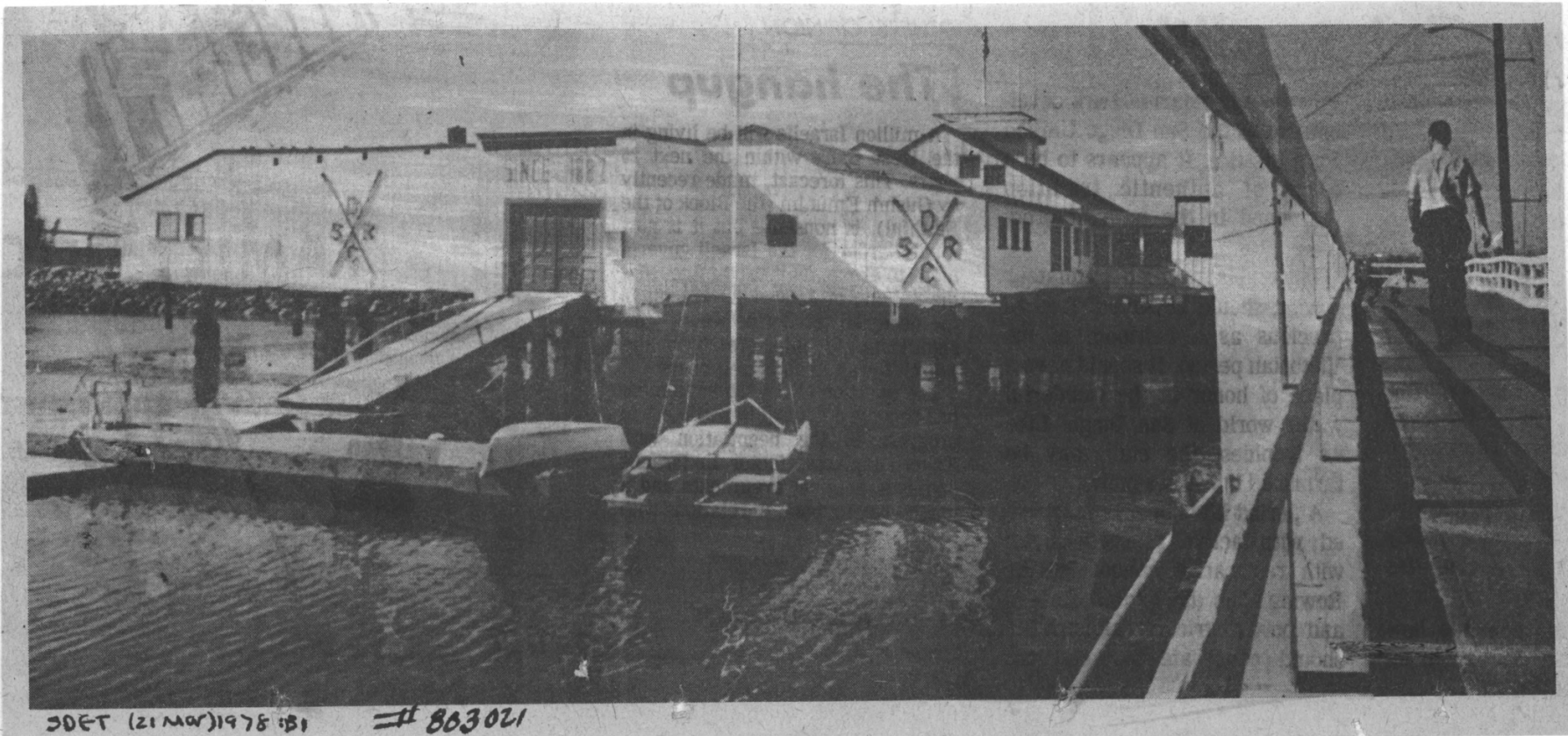
At the present time, the buildings are entirely (Brennan Island) or partially (club building) surrounded by landfill. See Drawing 550-MB and Xerox copy of National Ocean Survey Chart 18772.

San Diego Rowing Club  
252 E. Harbor Drive, San Diego, CA  
Photographer not given  
negative at San Diego Rowing Club  
1975  
Aerial view from south prior to construction  
of landfill. Brennans Island appears in  
foreground, this facility is now entirely

surrounded by landfill. Landfill abuts north-  
west and southwest sides of Rowing Club.  
Photo No. 505575

SAN DIEGO Co. AUG 30 1979  
AUG 1 1979





DOET (21 MAR) 1978 :B1

# 803021

Photo 803021

San Diego Rowing Club

SAN DIEGO Co.

252 E. Harbor Drive, San Diego, CA

Photographer not given

negative at San Diego Rowing Club

AUG 30 1979

March 1978

Northeast side, showing approach causeway.

Photo No. 803021

AUG 1 1979