



332

RB-7906/11c

PR 2-33

81

Photo #1 of 9 REC 10 1980 NOV 12 1980
Hanson-Downing House (BF05-165)
Kearney, Buffalo County, Nebraska
Photo by John Carter, Nebr. State
Historical Society (7906/38:30)
South and east facades looking northwest



332

38/29

80

Photo #2 of 9 DEC 10 1980
Hanson-Downing House (BF05-165)
Kearney, Buffalo County, Nebraska
Photo by John Carter, Nebr. State
Historical Society (7906/38:29)
South facade looking north

NOV 12 1980



332

40/20

Photo #3 of 9
Hanson-Downing House (BF05-165)
Kearney, Buffalo County, Nebraska
Photo by John Carter, Nebr. State
Historical Society (7906/40:20)
Detail of west facade looking northeast

DEC 10 1980 NOV 12 1980



332
40/22

Photo #4 of 9 DEC 10 1980
Hanson-Downing House (BF05-165)
Kearney, Buffalo County, Nebraska
Photo by John Carter, Nebr. State
Historical Society (7906/40:22)
North and west facades looking southeast

NOV 12 1980



332

38/27

Photo #5 of 9
Hanson-Downing House (BF05-165)
Kearney, Buffalo County, Nebraska
Photo by John Carter, Nebr. State
Historical Society (7906/38: 32)
Detail of front porch, south facade
looking northwest

DEC 10 1980

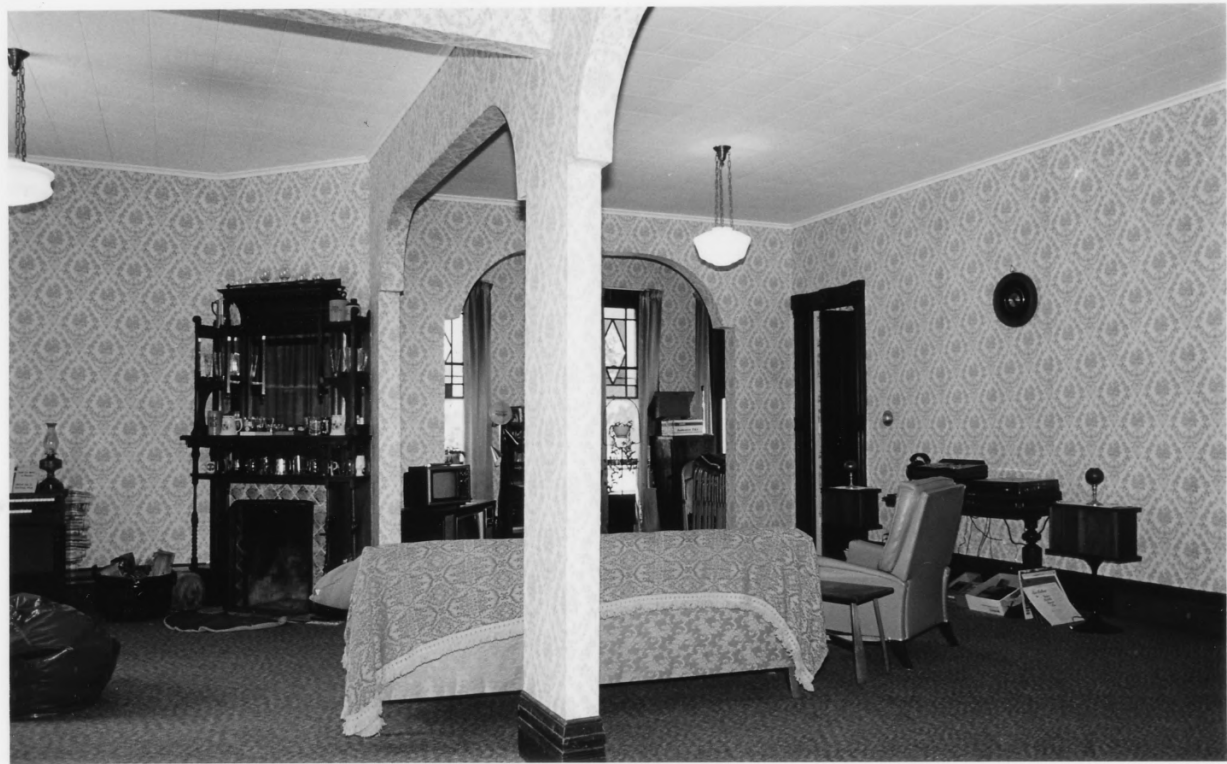
NOV 12 1980



DEC 10 1980

Photo #6 of 9
Hanson-Downing House (BF05-165)
Kearney, Buffalo County, Nebraska
Photo by John Carter, Nebr. State
Historical Society (7906/38: 27)
Detail of front porch, south facade
looking west

NOV 12 1980



332

34-17

Photo #7 of 9

DEC 10 1980

Hanson-Downing House (BF05-165)
Kearney, Buffalo County, Nebraska
Photo by John Carter, Nebr. State
Historical Society (7906/34:17)

Interior view showing living room and
dining room looking northwest

DEC 21 1980



332

34/12

81

DEC 10 1980

Photo #8 of 9
Hanson-Downing House (BF05-165)
Kearney, Buffalo County, Nebraska
Photo by John Carter, Nebr. State
Historical Society (7906/34: 12)
Interior view showing second floor
hallway looking south toward entry tower.

NOV 12 1980



332

3418

21

Photo #9 of 9

DEC 10 1980

Hanson-Downing House (BF05-165)
Kearney, Buffalo County, Nebraska
Photo by John Carter, Nebr. State
Historical Society (7906/34: 8)

Interior view showing detail of second
floor entry tower window looking southeast

NOV 12 1980