



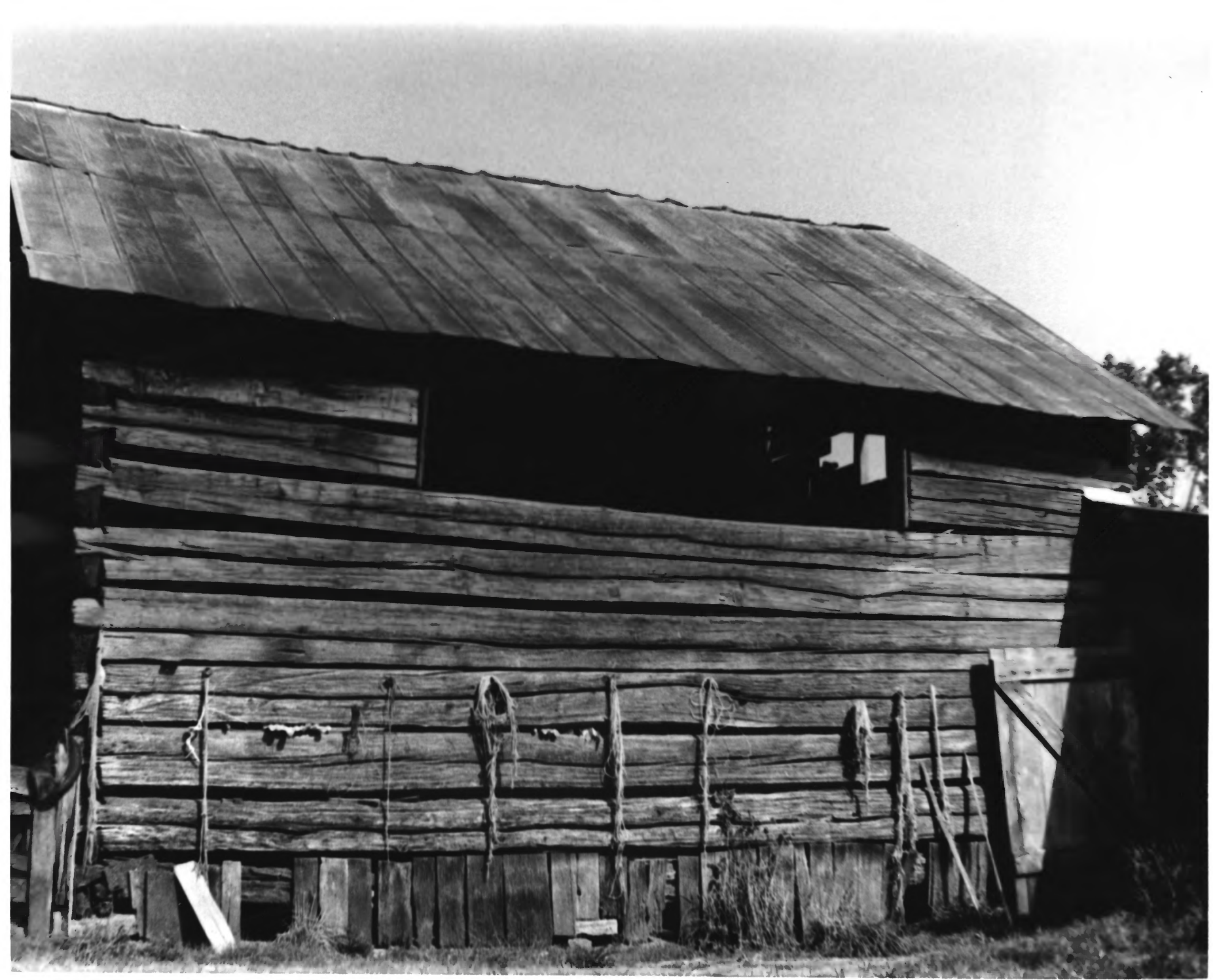
NATIONAL REGISTER OF HISTORIC PLACES
PROPERTY PHOTOGRAPH FORM

(Type all entries - attach to or enclose with photograph)

1. NAME		
COMMON	AND/OR HISTORIC	NUMERIC CODE (Assigned by NPS)
Long Meadow		JAN 11 1974
2. LOCATION		
STATE	COUNTY	TOWN
Tennessee	Hawkins	Surgoinsville
STREET AND NUMBER		
Route 1		
3. PHOTO REFERENCE		
PHOTO CREDIT	DATE	NEGATIVE FILED AT
Ellen Beasley	September, 1972	Tennessee Historical Com.
4. IDENTIFICATION		
DESCRIBE VIEW, DIRECTION, ETC.		

Front elevation





UNITED STATES DEPARTMENT OF THE INTERIOR
NATIONAL PARK SERVICE

NATIONAL REGISTER OF HISTORIC PLACES
PROPERTY PHOTOGRAPH FORM

(Type all entries - attach to or enclose with photograph)

1. NAME		
COMMON	AND/OR HISTORIC	NUMERIC CODE (Assigned by NPS)
Long Meadow		JAN 11 1974

2. LOCATION		
STATE	COUNTY	TOWN
Tennessee	Hawkins	Surgoinsville
STREET AND NUMBER		
Route 1		

3. PHOTO REFERENCE		
PHOTO CREDIT	DATE	NEGATIVE FILED AT
Ellen Beasley	September, 1972	Tennessee Historical Com.

4. IDENTIFICATION
DESCRIBE VIEW, DIRECTION, ETC.

View of log barn





UNITED STATES DEPARTMENT OF THE INTERIOR
NATIONAL PARK SERVICE

NATIONAL REGISTER OF HISTORIC PLACES
PROPERTY PHOTOGRAPH FORM

(Type all entries - attach to or enclose with photograph)

1. NAME		
COMMON	AND/OR HISTORIC	NUMERIC CODE (Assigned by NPS)
Long Meadow		JAN 11 1974
2. LOCATION		
STATE	COUNTY	TOWN
Tennessee	Hawkins	Surgoinsville
STREET AND NUMBER		
Route 1		
3. PHOTO REFERENCE		
PHOTO CREDIT	DATE	NEGATIVE FILED AT
Ellen Beasley	September, 1972	Tennessee Historical Com.
4. IDENTIFICATION		
DESCRIBE VIEW, DIRECTION, ETC.		
View of log kitchen		

