



GREENSTONE APARTMENTS,
1116 Poplar Avenue, Memphis, Shelby County
Tennessee

PHOTOGRAPHER: Kay Benton

MAY 14 1980

DATE: October 15, 1979

NEGATIVE: City of Memphis, Division of
Housing and Community Development

South and east elevations, facing northwest

1 of 12

MAR 26 1980



GREENSTONE APARTMENTS

1116 Poplar Avenue, Memphis, Shelby County
Tennessee

PHOTOGRAPHER: Kay Benton

DATE: October 15, 1979

MAY 14 1980

NEGATIVE: City of Memphis, Division of
Housing and Community Development

Entrance bay of south elevation, facing
north

2 of 12

MAR 26 1980

Entrance bay of south elevation,



GREENSTONE APARTMENTS

1116 Poplar Avenue, Memphis, Shelby County
Tennessee

PHOTOGRAPHER: Kay Benton

DATE: October 15, 1979

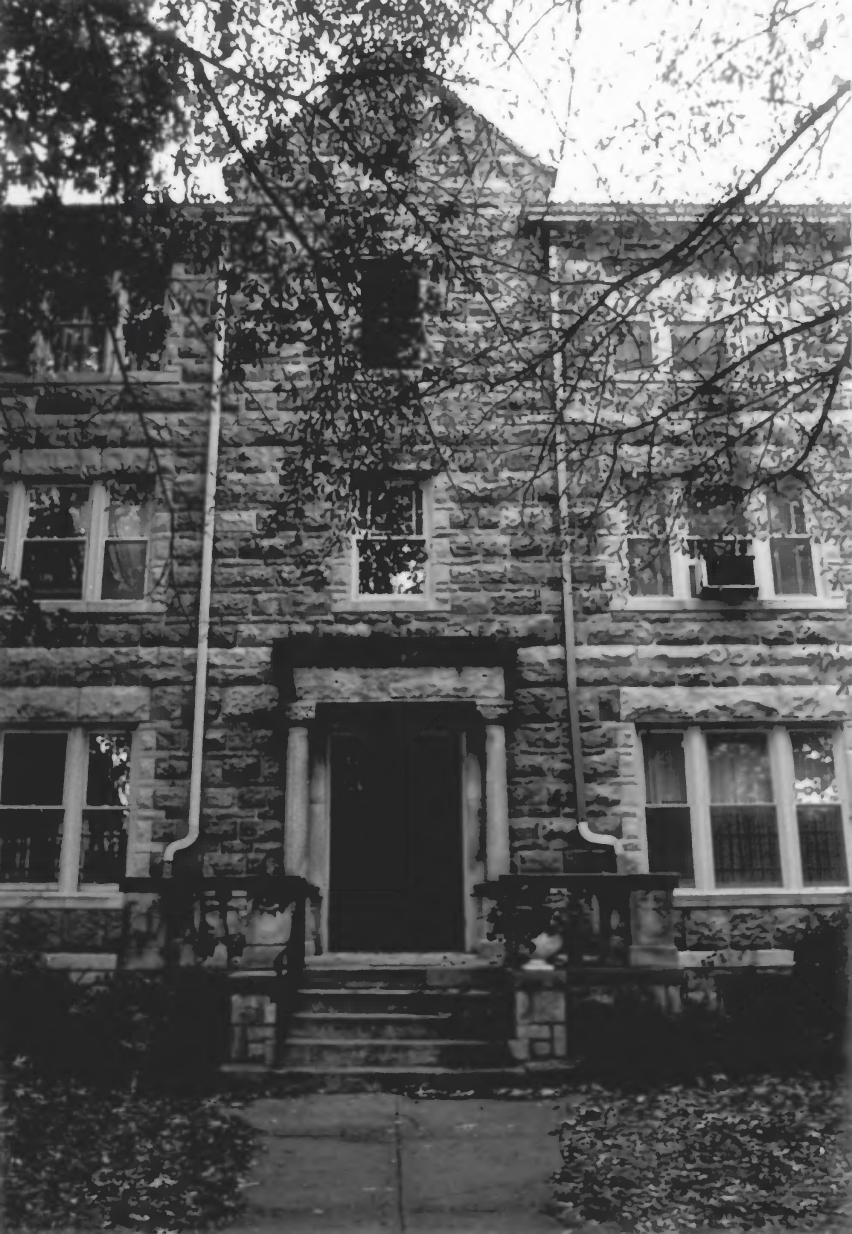
MAY 14 1980

NEGATIVE: City of Memphis, Division of
Housing and Community Development

West elevations of Poplar and Waldran
buildings, facing northeast

3 of 12

MAR 26 1980



GREENSTONE APARTMENTS

1116 Poplar Avenue, Memphis, Shelby County
Tennessee

PHOTOGRAPHER: Kay Benton

DATE: October 15, 1979

MAY 14 1980

NEGATIVE: City of Memphis, Division of
Housing and Community Development

Waldran entrance in west elevation, facing
east



GREENSTONE APARTMENTS

1116 Poplar Avenue, Memphis, Shelby County
Tennessee

PHOTOGRAPHER: Kay Benton

DATE: October 15, 1979

NEGATIVE: City of Memphis, Division of
Housing and Community Development

West elevation of Waldran building, facing
southeast

MAR 26 1980



GREENSTONE APARTMENTS

1116 Poplar Avenue, Memphis, Shelby County
Tennessee

PHOTOGRAPHER: Kay Benton

MAY. 14 1980

DATE: October 15, 1979

NEGATIVE: City of Memphis, Division of
Housing and Community Development

North elevation of Waldran building, facing
south

6 of 12

MAR 26 1980



1018 1116 200

GREENSTONE APARTMENTS

1116 Poplar Avenue, Memphis, Shelby County
Tennessee

PHOTOGRAPHER: Kay Benton

DATE: October 15, 1979

MAY 14 1980

NEGATIVE: City of Memphis, Division of
Housing and Community Development

North and west elevation of West building,
facing southeast



GREENSTONE APARTMENTS

1116 Poplar Avenue, Memphis, Shelby County
Tennessee

PHOTOGRAPHER: Kay Benton

DATE: October 15, 1979^(c)

MAY 14 1980

NEGATIVE: City of Memphis, Division of
Housing and Community Development

East elevation of west building, facing
southwest



GREENSTONE APARTMENTS

1116 Poplar Avenue, Memphis, Shelby County
Tennessee

PHOTOGRAPHER: Kay Benton

DATE: October 15, 1979

MAY 14 1980

NEGATIVE: City of Memphis, Division of
Housing and Community Development

Lobby of Poplar building, facing south

MAR 26 1980



GREENSTONE APARTMENTS

1116 Poplar Avenue, Memphis, Shelby County
Tennessee

PHOTOGRAPHER: Kay Benton

MAY 14 1980

DATE: October 15, 1979

NEGATIVE: City of Memphis, Division of
Housing and Community Development

Stairway in Poplar lobby, facing northeast



GREENSTONE APARTMENTS

1116 Poplar Avenue, Memphis, Shelby County
Tennessee

PHOTOGRAPHER: Kay Benton

MAY 14 1980

DATE: October 15, 1979

NEGATIVE: City of Memphis, Division of
Housing and Community Development

Recessed bench under staircase in Poplar
Lobby, facing east.

11 of 12

MAR 26 1980



GREENSTONE APARTMENTS

1116 Poplar Avenue, Memphis, Shelby County
Tennessee

PHOTOGRAPHER: Kay Benton

MAY 14 1980

DATE: October 15, 1979

NEGATIVE: City of Memphis, Division of
Housing and Community Development

Stairway in Poplar lobby, facing northeast