

A black and white photograph of a classical building facade. The building features a series of columns supporting an upper level with arched windows. The ground floor has three entrances. The left entrance is labeled 'TUXEDO RENTALS', the center entrance is labeled 'Pondio's FORMAL WEAR', and the right entrance is partially obscured by a tree and labeled 'ACCESSORIES'. The building has a decorative cornice with a row of small columns.

TUXEDO
RENTALS

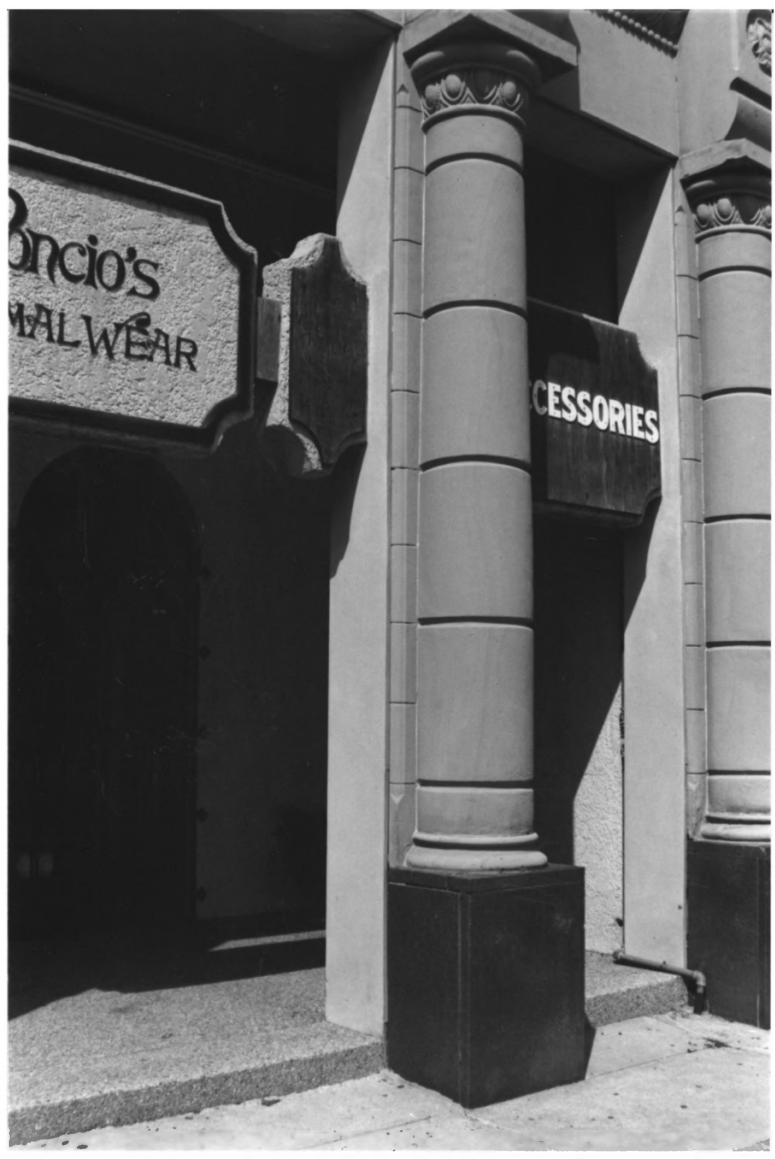
Pondio's
FORMAL WEAR

ACCESSORIES

People's Nat'l Bank
Iberia Parish, LA
Patricia L. Duncan
LA SHPO
Oct 2005
Photo 1 of 6
Southwest

Boncio's
FASHIONAL WEAR

ACCESSORIES



People's Nat'l Bank
Iberia Parish, LA
Patricia L. Duncan
LA SHPO
Oct 2005
Photo 2 of 6
W/SW

A black and white photograph of a building facade. The building features three windows on the upper floor, each with white curtains. Below the windows are three decorative panels. The left panel has a sign that reads "TUXEDO RENTALS". The middle panel has a sign that reads "Pancio's FORMALWEAR". The right panel has a sign that reads "ACCESSORIES". The building has a classical architectural style with columns and decorative moldings.

TUXEDO
RENTALS

Pancio's
FORMALWEAR

ACCESSORIES

People's Nat'l Bank

Iberia Parish, LA

Patricia L. Duncan

LA SHPO

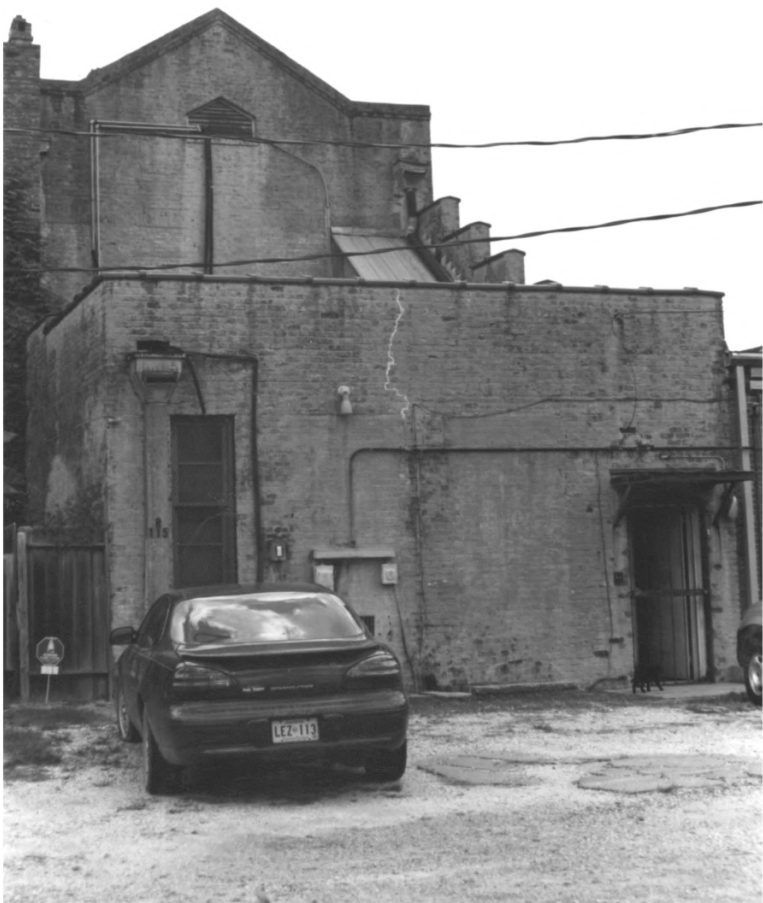
Oct 2005

Photo 3 of 6

SW



People's Nat'l Bank
Iberia Parish, LA
Patricia L. Duncan
LA SHPO
Oct 2005
Photo 4 of 6
SW



People's Nat'l Bank
Iberia Parish, LA
Patricia L. Duncan
LA SHPO

Oct 2005
Photo 5 of 6
NE



People's Nat'l Bank
Iberia Parish, LA
Patricia L. Duncan
LA SHPO
Oct 2005
Photo 6 of 6
Sample interior