

United States Department of the Interior
National Park Service

RECEIVED
APR 15 1991

National Register of Historic Places
Registration Form

NATIONAL
REGISTER

This form is for use in nominating or requesting determinations of eligibility for individual properties or districts. See instructions in *Guidelines for Completing National Register Forms* (National Register Bulletin 16). Complete each item by marking "x" in the appropriate box or by entering the requested information. If an item does not apply to the property being documented, enter "N/A" for "not applicable." For functions, styles, materials, and areas of significance, enter only the categories and subcategories listed in the instructions. For additional space use continuation sheets (Form 10-900a). Type all entries.

1. Name of Property

historic name Old Town Historic District
other names/site number _____

2. Location

street & number Old Post Road, Mt. Hope Street, Stagecoach Road N/A not for publication
city, town North Attleborough N/A vicinity
state Massachusetts code MA county Bristol code 005 zip code 02760

3. Classification

Ownership of Property

- private
- public-local
- public-State
- public-Federal

Category of Property

- building(s)
- district
- site
- structure
- object

Number of Resources within Property

Contributing	Noncontributing
<u>47</u>	<u>35</u> buildings
<u>5</u>	<u>0</u> sites
<u>5</u>	<u>1</u> structures
<u>1</u>	<u>0</u> objects
<u>58</u>	<u>36</u> Total

Name of related multiple property listing:
N/A

Number of contributing resources previously listed in the National Register 0

4. State/Federal Agency Certification

As the designated authority under the National Historic Preservation Act of 1966, as amended, I hereby certify that this nomination request for determination of eligibility meets the documentation standards for registering properties in the National Register of Historic Places and meets the procedural and professional requirements set forth in 36 CFR Part 60. In my opinion, the property meets does not meet the National Register criteria. See continuation sheet.

Judith B. M. Soranga 4/2/91
Signature of certifying official Executive Director, Massachusetts Historical Commission;
State Historic Preservation Officer
State or Federal agency and bureau _____

In my opinion, the property meets does not meet the National Register criteria. See continuation sheet.

Signature of commenting or other official _____
Date _____
State or Federal agency and bureau _____

5. National Park Service Certification

I, hereby, certify that this property is:

- entered in the National Register. See continuation sheet.
- determined eligible for the National Register. See continuation sheet.
- determined not eligible for the National Register.
- removed from the National Register.
- other, (explain:) _____

Brad A. Savoy 5/30/91

SN Signature of the Keeper Date of Action

6. Function or Use

Historic Functions (enter categories from instructions)

Domestic/Single dwelling; Secondary structure

Education/School

Religion/Religious structure; Church-related Residence

Current Functions (enter categories from instructions)

Domestic/Single dwelling; Secondary structure

Religion/Religious Structure; Church School; Church-related residence

Industry/Manufacturing facility

Transportation/Bridge

7. Description

Architectural Classification

(enter categories from instructions)

No style

Colonial/Georgian

Early Republic/Federal

Mid-19th Century/Greek Revival

Late Victorian/Queen Anne; Stick/Eastlake

Late 19th Century Revivals/Colonial Revival; Classical Revival

Materials (enter categories from instructions)

foundation Stone; Brick; Granite

walls Weatherboard; Brick; Asphalt, Aluminum; Synthetics

roof Wood; Asphalt Shingle

other

Describe present and historic physical appearance.

The Old Town Historic District is a formerly rural, now largely suburban, neighborhood where the patterns of buildings and landscape preserve the salient features of nearly three centuries of history, from the original Colonial settlement with its central cluster of community buildings and its periphery of farmsteads, to the early 20th century suburban blend of residential, agricultural and industrial activities.

Located on Old Post Road in the southwest corner of North Attleborough, Old Town contains twenty-three houses, seventeen outbuildings, a church, a former schoolhouse, a powderhouse, a factory, a pair of stone bridges, a mill dam and several historic archaeological sites on approximately one hundred acres of land, all significant features in the district's historical development. There are, in addition, eleven residences and twenty-four minor outbuildings within the district which are modern and noncontributing. One of the residences, though within the period of significance, has been extensively altered and is considered noncontributing. The district comprises the heart of the linear settlement that grew up along the mile-long stretch of Old Post Road and its intersecting roads north of Red Rock Hill. Old Post Road, Allen Avenue, Mount Hope Street and Linden Avenue date from the Colonial Period and probably had their origins in footpaths established by Native Americans. The Seven Mile River, fed by a pair of streams, runs through a shallow, wooded valley on the west side of the district and, after passing through a former mill and ice pond, flows under Old Post Road and into Luther Reservoir (ca. 1950) on the district's southern edge. With the exception of a small, hilly ridge (part of the Red Rock Hill formation) on the north side of Mount Hope Street, the topography is typified by gently rolling terrain. The district's houses line the road, with pasture and fields concentrated around the working farms in the northern end of the district.

Former fields that have reverted to woodlands lie just outside the district on the east and west. Beyond this wooded area to the west is U.S. Route 1 with its commercial strip development. To the east, along Mount Hope Street, the formerly rural and agriculture countryside has largely been built up with suburban residences. Along Old Post Road to the south of the district there are also a number of recently constructed houses. U.S. Route I-295 crosses the northern end of the district on an embankment; north of I-295 there are a

National Register of Historic Places Continuation Sheet

Old Town Historic District,
North Attleborough, Massachusetts

Section number 6 Page 1

Historic Functions (continued)

Agriculture/Outbuilding; Agricultural field; Processing
Industry/Manufacturing facility; Extractive facility
Defense/Arms Storage
Transportation/Bridge

National Register of Historic Places Continuation Sheet

Old Town Historic District,
North Attleborough, Massachusetts

Section number 7 Page 1

number of eighteenth and nineteenth-century houses on Old Post and Draper Roads, which represent an extension of Old Town but are not included in the district because they are separated from it by the modern highway.

Historically and visually, the center of town is at the intersection of Old Post Road and Mount Hope Street where the First Congregational Church, an ornate, Federal meetinghouse, built by a local carpenter, Ezra Walker, stands as the district's chief landmark (Map #26). Facing the church across the intersection is another prominent work of architecture, the Captain John Stearns House, a two-and-a-half-story, center-chimney, Georgian house with a one-story ell terminating in a one-room cell that appears to have been a freestanding structure in the early 18th century (Map #29). Between these two buildings, wide expanses of roadside lawn preserve a portion of the militia training field established in 1715 and now largely occupied by buildings.

On the northeastern side of the intersection stands the Conant-Maxcy House (Map #27), a late 19th century, Queen Anne residence that occupies the approximate location of the 1710 meetinghouse. North of this is the former District #6 Schoolhouse, a single-story, temple-style, Greek Revival building (Map #25); a short distance north of the school is the church parsonage, a one-and-a-half story building, also in the Greek Revival style (Map #18).

Though not visible from the road, the circular brick powderhouse is not far from the intersection, standing on the small hill east of the Conant-Maxcy House (Map #39).

The concentration of institutional buildings that defines the center of Old Town is augmented by the cluster of buildings around the former mill site south of the church. The site of the Newell Mill and its successors is significant both as a landscape feature and as an archaeological site. A low, earth and stone dam supplemented by concrete work at the forebay and spillway contains the pond; a pair of stone slab bridges carries Old Post Road over the river and the tailrace. The remnants of rubblestone walls at the dam's outlet and concrete foundations from the icehouse are the only above-ground evidence of any of the buildings; most of the area is now overgrown. At the north end of the industrial site is the Robinson-Sadler House (Map #31), built as the mill residence. The Sadler-Stokes House (Map #38) on Mount Hope Street may also have been used to house employees from the shops.

Across the road from the mill site are three houses built by the Todd family who operated the Old Town Ice Company. They are large, suburban villas, nominally Colonial Revival and Queen Anne in their styling (Map #s 33, 34, 37). The sheds that formerly housed the company ice trucks and the milk room for the Todd dairy herd are behind the Henry Todd House (Map #34). The Todd pasturelands have been flooded by the reservoir.

(continued)

National Register of Historic Places Continuation Sheet

Old Town Historic District,
North Attleborough, Massachusetts

Section number 7 Page 2

The rectangular tract of land east of the Stearns House was platted in 1892 as Kentston Park, though the development plans yielded only three houses during the streetcar era. Of these, only the Daniel Henry Hunt House (Map #41) retains sufficient integrity to be included in the district.

On the Old Post Road north of Old Town Center, there are a number of houses of the same vernacular type as the Stearns House. The Titus-George-Stanley House (Map #8), which is still a farm residence, is notable for its finely worked, pedimented frontispiece. A simpler example of the Federal style is the Robinson-Newell House (Map #4). The Greek Revival style is represented by the one-and-a-half-story Woodcock-Eldridge House (Map #10). One of the last farmhouses to be built in the district, the Robert McCartney House (Map #11), uses the same five-bay, center-entry form, but with a single-story front porch in the Queen Anne mode. A shift away from this vernacular model appears in the Eben and Mariana Sylvester House (Map #7) with its end gable form trimmed with bargeboard in a modest demonstration of Victorian Gothic.

As in the southern end of the district, the streetcar-era buildings on the northern end range in size and styling. The small, early 20th century subdivision of what was the northwestern corner of the Titus-George-Stanley farm contains: the Fuller House, a handsome, one-and-a-half-story Shingle Style cottage (Map #6); the two Bibeau Houses, two-story, end-gable-roof houses in a simplified Queen Anne style (Map #s 3, 5), the former Old Town Lace Works, a single-story example of mill construction with a modern front (Map #2); and the William Young House (Map #1), an essentially styleless vernacular building. To the south of these is the Horace Eldridge House (Map #13), a stuccoed frame building with the cross-gambrel roofs of the Dutch Colonial Style. The Frank Maxcy House (Map #28) and the Sadler-Stokes House (Map #38) further demonstrate the early 20th century popularity of this suburban style. A discussion of key and representative building follows. It is organized chronologically.

The Captain John Stearns House (692 Old Post Road, ca. 1680, ca. 1731, Map #29) is a two-and-a-half-story, shingled wood frame house with a flank-gable roof, center chimney in the Georgian style, with a traditional five-bay-wide center entry plan. On the exterior, the pedimented doorway is the principal decoration, while the interior is ornately finished and restored. Full-length, fluted pilasters frame the paneled walls in the northwest parlor. The southwest parlor has featherboard wainscoting and the front stairhall is finished with a heavy bolection molding, a short spindle railing and tiger maple stairs. The twelve-over-twelve, double-hung, wood sash windows are reproductions based on the original windows. On the southeast corner is an 1802 single-story, flank-gable structure, three bays wide with an off-center entry. A plank-walled, single room cell, with a fireplace in the northwest corner, appears to have originally been a free-standing building (ca. 1680) that predates the main part of the house. The garage is

(continued)

National Register of Historic Places Continuation Sheet

Old Town Historic District,
North Attleborough, Massachusetts

Section number 7 Page 3

noncontributing. - Captain John Stearns moved from Dedham to Attleborough, ca. 1745. A blacksmith by trade, he was a major figure in town affairs, serving in the militia, and the General Court Provincial Congress. Thomas Daggett, an innholder, purchased the house in 1781 and presumably maintained an inn here. A bar remained in the southeast room. The property was subsequently owned by the Newell and Kent families.

A noncontributing, one-and-a-half-story, clapboard, wood frame house on an L-shaped plan with a cross-gable roof and a raised concrete basement garage, occupies the same location as the Christopher Hall House (ca. 1710), which was destroyed in 1986 by the town fire department at the request of a realtor (633 Old Post Road, 1988, Map #19). The late 19th century one-and-a-half-story, clapboarded wood frame, end-gable-roof barn on rubblestone foundation, associated with the former Christopher Hall homestead, is considered contributing.

The Town Powder House (10 Mount Hope Street, 1768, Map #39, MHC #3) is a one-story, circular, brick building with wood shingled, conical roof, approximately twelve feet in diameter, with a wooden door. Situated on a wooded, rocky knoll north of Mount Hope Street, the powder house has been painted and re-roofed twice in its history. Since 1965, it has been enclosed by a chain link fence. The magazine was constructed to store the town's stock of ammunition between September and December 1768, on land just east of the training field, by Jacob Newell, then Town Treasurer. It remained in active service through the War of 1812. By the 1870s, the townspeople were taking steps to preserve the building as a historical landmark.

The Robinson-Jacob Newell House (493 Old Post Road, ca. 1788, Map #4) is a Federal two-and-a-half story, shingled frame, center chimney house in the traditional five bay, center-entry style. The exterior ornament is concentrated in the Georgian frontispiece which has fluted pilasters supporting a pediment enriched with dentils. Interior features of note include a fireplace in the northeast parlor with architrave molding and a paneled overmantel. A two-car, noncontributing garage was built on the north end in 1989. Obed Robinson, a silversmith, built this house on a one-quarter acre plot which he purchased in 1788. Robinson subsequently moved to nearby Robinsonville where he established one of the town's first jewelry firms.

The Titus-George-Stanley House (526 Old Post Road, ca. 1800, Map #8) is a two-and-a-half story, asphalt shingled, wood-frame, flank-gable-roof house with a center chimney in the traditional five-bay-wide, center-entry Federal style. Architecturally the house is notable for its fine Federal frontispiece which has a doorway and fanlight framed by fluted pilasters and a pediment enriched with moldings, a key block and distinctly undulating, drilled decoration. The large, two-story ell on the rear with two internal chimneys was formerly extended by a smaller ell. Three noncontributing 20th century

(continued)

National Register of Historic Places Continuation Sheet

Old Town Historic District,
North Attleborough, Massachusetts

Section number 7 Page 4

outbuildings, a garage and two sheds, are also on the property. Peter Titus, a blacksmith from Rehoboth, was the original owner of this house; he sold it to Preston George, an Attleborough butcher, in 1805. George's son-in-law, Seneca Stanley, acquired the farm and expanded his holdings in the mid-19th century. The northern part of Stanley's farm was parceled off in the early 20th century while the remainder has continued in agricultural use.

The Newell Blacksmith Shop Site (Opposite 742 Old Post Road, ca. 1815 et. seq., Map #35) contains a low, earth and rubblestone dam with a forebay and spillway supplemented by early 20th century concrete which contains the Seven Mile River in the former mill and ice pond. The sites of the blacksmith shop and the successor cotton mill, jewelry shops and ice houses are largely overgrown. No archaeological testing has been done here beyond surface collecting by a vocational archaeologists.

The First Congregational Church (675 Old Post Road, 1828, Map #26, MHC #5), built by Ezra Walker, is a two-story, white pine and oak clapboarded frame, meetinghouse approximately 65 feet long and 45 feet wide with an end-gable roof crowned by a three-tiered tower with the belfry in the middle tier and an octagonal cupola on the top. A handsome example of the local Federal style, the church facade has a shallow, pedimented pavilion, slightly lower than the main pedimented gable that contains twin entries in Classical enframements. Above the entries, a pair of large, twelve-over-twelve windows topped with wooden fans, flank a fifteen-foot-high window with a similar wooden fan. The pavilion pediment contains a lunette as well. The main body of the meetinghouse, the pavilion, and the tower are trimmed with quoining, enriched cornices and, in the upper two tiers of the tower, with pilasters. The flanks of the church each have eight, seven-foot-high windows with twelve-over-twelve, double-hung, wood sash, and wooden fans lighting the main assembly room on the second story. The chancel and pulpit (which was lowered ca. 1885) are located at the front (east) end of the church. Galleries run along the sides of the church and at the west end is the organ loft which contains the ca. 1830 Stevens "tracker action" organ which was manually pumped until the 1920s when it was electrified. Aside from the change to the pulpit, the principal alterations to the church have been the addition of the basement in 1911, and the kitchen in 1948, located in the basement. In 1989-1990 a rear addition was added as well. A mid-19th century carriage shed was moved to an unknown location in 1990. This is the third home of the First Congregational Society, the first church established in the old town of Attleborough. Two earlier church buildings, of 1710 and 1728, were apparently located just east of the building on the opposite side of Old Post Road.

The Old Town Schoolhouse District #6 School (670 Old Post Road, ca. 1840, Map #25, MHC #7) is a single-story, clapboarded frame, end-gable-roof building in the vernacular Greek Revival temple style with a pair of side entries and a square tower with a louvered belfry. A simple, but prominent, cornice,

(continued)

National Register of Historic Places Continuation Sheet

Section number 7 Page 5

Old Town Historic District,
North Attleborough, Massachusetts

repeated over the doorways and cornerboard pilasters are other exterior features. The windows have six-over-six, double-hung, wood sash, except in the center of the facade, where the original window was replaced by a pair of smaller sash, covered by shutters in the early 20th century. The District #6 school was established ca. 1804 in a two-story building south of this site. While the schoolhouse was still used as such in 1832, the present schoolhouse must have been erected by the mid-19th century. It was in service until 1938. It presently houses the First Congregational Church Sunday School.

The Woodcock-Eldridge House (549 Old Post Road, ca. 1843, Map #10, MHC #55a) is a one-and-a-half story, clapboarded, wood-frame, flank-gable-roof Greek Revival cottage in the traditional five-bay-wide, center entry style. A prominent cornice, cornerboards and a sidelit doorway with a plain entablature are the principal elements of the external trim. The windows are six-over-six, double-hung, wood sash. One of the two interior chimneys has been removed. Contributing outbuildings include a single-story, wood frame, gable-roof shed, now a garage, and a wellhouse with iron grill and crank. There is also a noncontributing, modern toolshed. A circular depression and other earth patterns mark the location of the brickyard and it is included as a contributing site.

The First Congregational Church Parsonage (632 Old Post Road, ca. 1844-1850, Map #18, MHC #4) is a one-and-a-half-story, clapboard-clad, gable-roof house, three bays wide with a side entry. This Greek Revival building has a prominent cornice, cornerboard pilasters and a sidelit doorway with a trabeated surround. A single-story on the rear has been altered; the gable roof dormers on either slope of the roof are later additions. A noncontributing, single-story, wood frame, end-gable-roof garage in the rear of the property stands in the place of the original barn, which was demolished in the 1950s.

Peavy-Todd House site (20 Mount Hope Street, Map #40, MHC #251), barn, and farmscape contribute to the district. The present house on the property, a late 20th century, single-story, L-shaped, gable-roof ranch house with painted shingle and vertical board siding and a large picture windows, is typical of residential construction. The original house, a mid-19th century building, was destroyed by fire ca. 1960 and no description or depiction of it has been located. The stone walls and the surviving barn, however, occupy an important place in the Old Town landscape, and help to preserve the area's rural character. The barn is a studded structure with horizontal board sheathing and wood shingles. Its six-over-six, double-hung, wood sash windows have been boarded over. The main entrance in the west gable end is approached by an earth ramp; there is also a doorway in the stone basement wall on the south flank. Although the southern side of the barn has been damaged by fire, the building is important as one of the few surviving 19th century farm outbuildings in the district. A noncontributing, mid-20th century shed is also located on the property.

(continued)

National Register of Historic Places Continuation Sheet

Old Town Historic District,
North Attleborough, Massachusetts

Section number 7 Page 6

The Robinson-Sadler House (709 Old Post Road, ca. 1847, Map #31) is a one-and-a-half-story, clapboard-clad house in the traditional five-bay-wide, center entry mode with Greek Revival styling. A prominent cornice with a high entablature, channeled cornerboard pilasters, a watertable and a Doric frontispiece are the principal architectural features. A set-back, single-story wing on the south end has a shed roof porch with turned posts and a side entry with a transom. The six-over-six, double-hung windows have cornice moldings on the main block of the house. This house was erected and long served as the residence associated with the Robinson button shop on the former Newell property immediately to the south.

726 Old Post Road (Map #32, MHC #240) is the site of the late 18th century Newell's Tavern and is considered significant for its archaeological potential. Newell's Tavern was torn down in the late 1940s or early 1950s.

The Sadler-Stokes House (8 Mount Hope Street, ca. 1858, remodeled 1926, Map #38, MHC #254) is a one-and-a-half story, flank-gambrel-roof house with long, shed-roof dormers on either flank of the roof. The house presently is largely the product of the ca. 1926 remodeling in a vernacular style influenced by the Dutch Colonial Revival. The roof has boxed, molded eaves with a frieze raked in the gables; at the first story level there is a simple box cornice with partial returns. Plain cornerboards and the cornice window heads over the windows in the east end seem to be the only elements of the original exterior trim that have survived. The two-over-one, double-hung, wood sash windows are paired in the four-bay-wide facade. The entry is on the west end, through a single-story shed roof wing with a screened porch. There is a central chimney/flue, and rubblestone foundation. The house is significant as a representative of vernacular building and changing tastes in the mid-19th and early 20th centuries. The modern shed is noncontributing. This house first appears on the 1858 map of Attleborough, where it is listed as one of several houses in Old Town owned by T.D. Sadler. In 1895, the house was in the possession of Mrs. Sadler. In the early 20th century, the Stokes family acquired the house and remodeled and enlarged it after it was damaged by fire ca. 1926.

The Eben Sylvester House (513 Old Post Road, ca. 1880, Map #7, MHC #267) is a two-story, end-gable-roof, frame cottage representing a modest example of post-Civil War, Victorian eclecticism. In contrast to the vernacular Classical mode which predominated in the vicinity, this house, with its eaves trimmed with carved verge boards in the gables, and brackets (only two of which remain on the main roof), reflected new trends in American architecture. The house has a side entry with architrave molding, flanked by a single-story, square, hip-roof bay window with scroll brackets and narrow one-over-one, double-hung, wood sash windows. The other windows are also one-over-one, double-hung, wood sash windows with architrave trim. There is a single-story, flank gable-roof ell on the south flank with an enclosed shed-roof porch.

(continued)

National Register of Historic Places Continuation Sheet

Old Town Historic District,
North Attleborough, Massachusetts

Section number 7 Page 7

Two bridges (Map #36) over the Seven Mile River are relatively rare survivals of granite slab bridges on a well-traveled road. This simple type of bridge was commonly used in the 18th and 19th centuries for spanning small waterways. The construction of these bridges followed the destruction of their predecessor in an 1886 freshet. The span actually consists of two bridges, essentially identical, that carry Old Post Road over the river's two channels (former mill races). An earth bank, approximately fifty feet wide, separated the two waterways. Each bridge is composed of two spans supported by abutments and a center pier of rubble masonry. Each span is comprised of roughly-quarried granite slabs, approximately 6 feet long and 1.5 feet to 2 feet wide, arranged in thirteen parallel rows. A modern roadbed is laid on top of the slabs and there are low, concrete side walls. The northern bridge is mounted with steel traffic barriers set in concrete. Both bridges are contributing structures to the district.

The Conant-Maxy House (680 Old Post Road, ca. 1891, Map #27) is a two-story, wood frame, end-gable-roof house in the Queen Anne style, three bays wide with a side entry under a single-story verandah. Novelty shingling in the gable, gable trim, and decorative barge boards trim the exterior. On the south flank of the house, there is a single-story wing with a flat roof and a decorative parapet railing. A one-and-a-half-story barn with a flank-gable roof, vertical siding and a pair of double doors stands north of the house and contributes to the significance of the historic district. The Conant-Maxy House occupies a portion of the two-acre lot donated to the town, ca. 1712. The first two meetinghouses and first school occupied some part of the two-acre lot, though exact locations are not known. This house was apparently built by John Conant, ca. 1891; his wife operated the local post office out of the front porch until ca. 1910. It subsequently became the Maxcy family residence.

The Robert McCartney House (548 Old Post Road, ca. 1895, Map #11) is a late 19th century vernacular farmhouse with a measure of Queen Anne decoration and a one-and-a-half-story rear ell. A shed-roof porch with a center gable decorated in a staggered butt, wood shingle motif wood shingles with staggered butts shelters the first story of the facade. The porch is supported by turned posts with jigsawed spandrels and is enclosed by a square-cut railing with molded handrails and ball finials on the posts. Above the porch, two gable-roof wall dormers flank a central chimney in the front slope of the roof which has boxed eaves. The house has one-over-one, double-hung wood sash windows; the windows in the end walls have shed hoods.

The Samuel McCartney House (541 Old Post Road, ca. 1900, Map #9, MHC #266) is a turn of the century two-story, end-gable-roof house of the Classical Revival style. It is trimmed with boxed, molded eaves, frieze, corner boards and a single-story, flat-roof porch supported by Roman Doric columns on the facade. The porch shelters a side entry and a pair of one-over-one, double-hung, wood

(continued)

National Register of Historic Places Continuation Sheet

Section number 7 Page 8

Old Town Historic District,
North Attleborough, Massachusetts

sash windows; both the windows and doorway are treated with architrave molding. Two bays wide and four bays deep, the house has an internal chimney and a single-story, flat-roof vestibule on the south flank. The garage and workshops are noncontributing structures.

The Lathrop House (649 Old Post Road, ca. 1902, Map #21, MHC #256) is a large, simply-styled, suburban house much like the other large houses built on Old Post Road at the turn of the century. Two stories high, with a flank-gable roof and five bays wide, it has pedimented gables and a semi-hexagonal bay on the south end. The one-over-one, double-hung windows are arranged in pairs and the center entry has a modern Georgian frontispiece. There is a single-story, shed roof ell on the southwest corner. A shed located in the rear is noncontributing.

The James Adams House (732 Old Post Road, ca. 1903, Map #33, MHC #244) is one of several suburban houses built in Old Town at the turn of the century. This two-and-a-half-story house has a hip roof and a central, gable-roofed front pavilion with a semi-hexagonal bay that contains the center entry. The gable peak contains an elliptical window with tracery and four key blocks in the architrave molding. The two-tier front porch stretches across the facade, following the projection of the pavilion. It is supported by Roman Doric columns, and has a railing with turned spindles and posts with ball finials. The main roof has deep eaves and a hip-roof dormer on either flank. The one-over-one windows include paired windows, on the second story and, in the first story and, in the first story parlor, diamond lozenge panes in the upper sashes. The frame garage, which dates from the early 20th century, is contributing.

The Henry Todd House (742 Old Post Road, ca. 1903, Map #34) is a two-and-a-half-story, clapboarded and shingled wood frame house with an end gable roof and an octagonal, two-story turret with a conical roof. A building with picturesque asymmetry of the Queen Anne and classically inspired surface details of the Colonial Revival, the house was designed and built by William Todd and William and Emerson Perry. One of the three houses built for the children of William Todd, proprietor of the Old Town Ice Company, the Henry Todd House closely resembles its neighbor to the south, the George Todd House. Contributing outbuildings included a frame barn, originally used for the ice company horses, a shed that housed the ice trucks, and a former milk room for the Todd dairy cattle.

The William H. Young House (420 Old Post Road, ca. 1904, Map #1, MHC #273) is a two-story, flank gable-roof frame dwelling that illustrated the continuity of a basic vernacular house type into the early 20th century. Three bays wide and two bays deep with a plain center entry, the house is trimmed with corner boards and boxed eaves. A single-story, hip roof porch with square posts and concrete foundation stretches the length of the facade. There is an internal,

(continued)

National Register of Historic Places Continuation Sheet

Old Town Historic District,
North Attleborough, Massachusetts

Section number 7 Page 9

off-center chimney or flue, and a single story shed roof addition on the rear. A late 20th century, noncontributing shed is also located on the property.

The Albert Bibeau House (484 Old Post Road, ca. 1904, Map #3, MHC #270), like its neighbor at 494 Old Post Road, is a two-story, end gable-roof house with a modest measure of the irregular massing and ornamental elaboration that characterize the Queen Anne style. Three bays wide and three bays deep with a side entry, the house most likely had a front porch which was removed at an unknown date. The present broken pediment frontspiece and metal side rails are recent additions. The house has two-over-two, double-hung, wood sash windows with architrave molding. In the gable there is an ornamental window with a border of colored glass. There is a single-story, semi-hexagonal bay with a cobble foundation on the south flank, as well as a hip roof wall dormer. On the north flank there is a single-story, hip-roof vestibule. The top story of the house is covered with wood shingles while the first floor is clapboarded. The roof has molded eaves and the foundation is brick. An early 20th century, contributing garage is also located on the property. In 1904-1905, Dosithe Bibeau purchased a parcel of land with 260 feet frontage on Old Post Road from Marianna Sylvester, land that had formerly been part of the Seneca Stanley Farm. It was presumably then, or shortly thereafter, that Bibeau erected the two similar houses at 484 and 494 Old Post Road. In 1921, Bibeau sold the parcel to Albert Bibeau who immediately resold the 484 Old Post Road property, and the lot adjoining to the north, to Albert and Eva Bonnier. Between 1926 and 1937, Ellen Darcy of Pawtucket owned the two lots, and in the latter year, sold them to the Oldtown Lace Works. The house remained the property of the Lace Works until the company dissolved in 1959.

The Dosithe Bibeau House (494 Old Post Road, ca. 1905, Map #5, MHC #269), like its neighbor at 484 Old Post Road, is a two-story, end gable-roof house with a modest measure of the irregular massing and ornamental elaboration that characterize the Queen Anne style. The house has a single-story porch across the facade, supported by square columns. A pent roof shelters two single-story bays on the south flank. The house has one-over-one, double-hung, wood sash windows with fake six-over-six muntins. There is a two-bay-wide cross gable on the south flank and, in the front gable, a single window with an ornamental border of colored glass. The roof has molded eaves and the foundation is brick. The house typifies the moderately-sized residences built in Old Town during the streetcar era. In 1904-1905, Dosithe Bibeau purchased over three acres of land, part of the former Seneca Stanley Farm from Marianna Sylvester. Presumably at this time he built this house and its former northern neighbor, 484 Old Post Road. Bibeau sold the house to Albert Bibeau in 1921. The house was subsequently the property of Albert and Eva Bonnier. The garage, summerhouse, and shed, all contributing, have cobblestone foundations and shingled walls.

(continued)

National Register of Historic Places Continuation Sheet

Old Town Historic District,
North Attleborough, Massachusetts

Section number 7 Page 10

The George Todd House (778 Old Post Road, ca. 1905, Map #37, MHC #242) is one of several large, Queen Anne houses built in Old Town at the turn of the century. A two-and-a-half-story structure, it has an end gable roof with shallow cross gables on the north and south, and a pent roof across the third floor. The gable is covered with novelty shingles and has a Palladian window. On the northeast corner of the house there is an octagonal two-story tower covered with imbricated shingles and crowned by a pyramidal roof with finial. A hip roof porch supported by Roman Doric columns stretches across the facade and terminates in an octagonal porch with a roof crowned by a finial on the northwest corner. The central entry and the two-over-one, double-hung windows are trimmed with architrave molding. The house, with its irregular silhouette dominated by the large and small octagonal roofs, is nearly identical to the Todd House on the north side of the river, which suggests that they may both have been designed by Miss Anna S. Perry. A noncontributing shed is also located on the property. George Todd, one of the members of the Todd family which operated the Old Town Ice Company on the pond west of the house, acquired this piece of land, along with a 1/6 interest in the icehouse property from Gamaliel B. Draper in 1913. In 1915, his wife took title to the property, which then included buildings, presumably this house. This house, and the Henry Todd House, built a year or so before, stand on opposite sides of the Seven Mile River, facing the pond that was formerly at the center of the family business. The house remained in the Todd family until 1942.

The Daniel B. Hunt House (31 Stagecoach Road, ca. 1908, Map #41, MHC #249) is a one-and-a-half story, end-gable-roof house and a more modest edition of the large, suburban houses built nearby on Old Post Road. A front porch with turned posts and a square railing and a hip roof shelters the front entry and the flanking tripartite window. A gable-roof wall dormer on either flank creates a cross gable effect; the roof has boxed, molded eaves with a frieze, raked in gables, a single-story, semi-hexagonal bay on the west flank balances the side entry with a new porch on the east flank. The two-over-one, double-hung, wood sash windows are trimmed with architrave molding. The foundation is rusticated concrete block. There is an early wood frame contributing garage.

The Horace Eldridge House (575 Old Post Road, ca. 1911, Map #13, MHC #263) is a good example of early 20th century suburban architecture in the Old Town neighborhood. A two-story, cross-gambrel roof, stuccoed wood frame house, it is five bays wide and three bays deep, with boxed eaves with small modillions. A projecting, gable-roof vestibule on the east flank contains a front doorway with a wooden fan and sidelights. On the north end there is a single-story, flat-roof, enclosed porch as well. The two-over-one, double-hung, wood-sash windows are trimmed with architrave molding. There is an early, 20th century, frame garage north of the house, considered contributing. According to long time Old Town resident John P. Gemeinhardt,

(continued)

National Register of Historic Places Continuation Sheet

Section number 7 Page 11

Old Town Historic District,
North Attleborough, Massachusetts

Horace Eldridge built this house for his residence. The property was, at the time, a part of the homestead estate of the late Joseph Eldridge, his father. The original residence is still standing at 549 Old Post Road, but Horace's house has since been separated from the larger tract. In 1911, Horace Eldridge and Harriet Eldridge Robinson mortgaged the property, which mortgage may have financed the construction of the house. The foundations is brick. A mid-20th century barn and two sheds are noncontributing.

A two-story, flank gable-roof, modern dwelling with a garage in the ground story and a second story wooden deck in the rear (573 Old Post Road, ca. 1970, Map #12, noncontributing) occupies a small house lot between the Joseph Eldridge farm and the Horace Eldridge House and was formerly part of the Eldridge farm. The large maple trees in front of the house are survivor from this earlier era.

The Edward Fuller House (506 Old Post Road, ca. 1914, Map #6, MHC #268) is a handsome example of a small, suburban cottage and an important representative of the architecture of the streetcar era in Old Town. This one-and-a-half-story house's appearance is dominated by a flank-gable roof that extends out over the front porch and has a large, central dormer with a turret-like roof in the front slope. The porch, which runs the length of the facade and supported by shingled posts, shelters a plain center entry and a broad, shallow bow window. The house is trimmed with a cornice and has an internal, fieldstone chimney. There is a single-story, shed roof extension on the rear and a frame garage (contributing) is located south of the house. The Edward Fuller House is one of a number of early 20th century house built on the land of the former Seneca Stanley Farm. Eben and Marianna Sylvester, who acquired the Stanley Farm in 1897, sold this land to Edward and Eleanor Fuller in 1910. In 1914, Edward Fuller sold it back to Eben Sylvester and immediately repurchased it. The Fullers owned the house until 1951 when the current owners acquired it.

The Herbert Duxbury Laundry House (597 Old Post Road, ca. 1924, Map #14, MHC #262) is a single-story, hip-roof wood frame house built as a wet wash laundry house and subsequently converted into a residence. Herbert Duxbury was an employee of the Old Town Ice Company early in the 20th century, at which time he lived on the James Todd Farm on Mount Hope Street. After leaving the ice business he established this laundry with his wife, Belle. Due to the extensive alterations to the building when being converted to a residence, it is considered noncontributing. A shed on the property is also noncontributing.

The Herbert Duxbury House (605 Old Post Road, ca. 1924, Map #15, MHC #261) is an L-shaped, single-story, end-gable roof wood frame house with rubblestone foundation and is a modest example of an essentially styleless vernacular building. Herbert Duxbury was employed in the early 20th century as a driver for the Old Town Ice Company and lived on the James Todd Farm. After leaving the ice company, he moved to this spot on Old Post Road where he built this

(continued)

National Register of Historic Places Continuation Sheet

Section number 7 Page 12

Old Town Historic District,
North Attleborough, Massachusetts

house and the building next door, which was originally a wet wash laundry. The garage is noncontributing.

The Frank Maxcy House (683 Old Post Road, ca. 1933, Map #28, MHC #255) is a one-and-a-half-story frame house and an example of the smaller-scaled Colonial Revival houses built in the vicinity after the turn of the century. A five-bay-wide house with a center chimney, a steep flank-gable roof with long shed dormers and a box cornice with partial returns, it has a central portico with a gable roof supported by fluted, square, Roman Doric columns. The porch roof has an elliptically arched ceiling, which frames a wooden fan or sunburst over the six-panel door and flanking sidelights. There is a single-story hip-roof-wing on the rear, six-over-one double-hung wood sash windows and a rusticated concrete block foundation. The garage to the north of the house has a gable roof with a box cornice, one pair of double-leaf doors and one overhead door, as well as a shed-roof addition on the north end with double-leaf doors. The stone trough on the front lawn was formerly located in front of a stable on Elm Street at the center of town.

The former Oldtown Lace Works (478 Old Post Road, ca. 1937, Map #2, MHC #272) is an altered example of a relatively common type of early 20th century industrial building. A single-story building with a broad, end-gable roof, it is three bays wide and seven bays deep, with a four-bay-deep concrete block addition on the rear. The building has paired six-over-six, double hung, wood sash windows in the flanks, a simple hood over an entry in the south flank, and open eaves with projecting rafter ends. The foundations are concrete. The facade was remodeled ca. 1960 with large picture windows on the north. An aluminum-framed entry in the center and a loading bay with composition stone and vertical board siding and a corrugated fiberglass hood stretches across the facade. Aluminum block letters, spelling "Keith & Keith, Inc.," the present occupants, are attached to the facade. The former Oldtown Laceworks, now occupied by manufacturers of canvas products, is the only surviving industrial building in Old Town. Though it is a relatively recent fixture in Old Town, and differs in product and technology from the early water-powered jewelry and blacksmith shops of the 19th century, this small factory is significant as it illustrates the persistence of small-scale rural or suburban manufacturing in Old Town into the 20th century. The Oldtown Lace Works purchased this property and the adjoining property (494 Old Post Road) in 1937. George W. Pepper and Ernest Warton, the principals in the company, operated the laceworks for over twenty years. In 1959, the company sold the property to a realty company and dissolved the firm.

The John P. Gemeinhardt House (610 Old Post Road, ca. 1938, Map #16, MHC #260) is a one-and-a-half story, flank-gable-roof house with a rubblestone center chimney and a single-story, hip-roof wing on either end and is a mid-20th century representative of the traditional, vernacular cottage. While the house was built by John P. Gemeinhardt, his father, John L. Gemeinhardt, a

(continued)

National Register of Historic Places Continuation Sheet

Section number 7 Page 13

Old Town Historic District,
North Attleborough, Massachusetts

German immigrant, was responsible for the chicken coop and the other, similarly-built outbuildings that are distinctive examples of vernacular construction. The garage is noncontributing, but the chicken coop and a shed are contributing. In 1872, Thomas D. Sadler sold to Charles Rohrback, jeweler, a parcel of land on the "old road from Attleborough to Pawtucket near the Stone Bridge." The house that Rohrback purchased was depicted on the 1858 map of Attleborough as one of two houses owned by Sadler and it may also have been a house in this location that appears on Capron's 1832 map of the town. In 1924, John L. Gemeinhardt acquired the property and his son, John P. Gemeinhardt, subsequently tore down the house because of its deteriorated condition. The rear ell of the house remains as an outbuilding and, together with the house site, contributes to the district.

Intrusions in the Old Town Historic District are, for the most part, single-family infill housing. There are ten of these houses, some of them occupying the sites of earlier buildings, but most of them are on open land. The single greatest intrusion is U.S. Route I-295, which crosses Old Post Road on the north end of the district on a single-span, reinforced concrete bridge. Construction of I-295 in the early 1970s eliminated two historic properties on the west side of Old Post Road, the former Erik Greene estate, and the William H. Robinson jewelry factory. A single building, a two-story, flat-roofed, concrete-and-frame office building has taken their place on the southwestern side of the highway overpass and is outside the district.

(continued)

National Register of Historic Places Continuation Sheet

Section number 7 Page 14

Old Town Historic District,
North Attleborough, Massachusetts

Archaeological Description

While no prehistoric sites are currently recorded in the district, it is likely that sites are present. Three sites have been recorded in the general area (within one mile). The physical characteristics of the district, well drained soils and gently rolling terraces with some hills in close proximity to the Seven Mile River and its tributary streams indicate favorable locational criteria for native subsistence and settlement activities. The Red Rock Hill formation, part of the Wamsutta Formation and within the district, also contains red felsite commonly referred to as Attleboro Red, a material favored for tool manufacture by native peoples. The Seven Mile River has also been recognized as a locus for settlement during the prehistoric period. Given the above information, the size of the district (100 acres), and its open space, it is probable that sites are present.

There is also a high potential for significant historical archaeological remains within the district. Controlled testing and excavation may determine if survivals remains of 17th and 18th century homes that may have been in the Old Post Road area. Some examples of these periods exist om the district, though the dominant residential, civic, and religious structures date to the mid 19th through 20th centuries. Archaeological testing may locate structured survivals of the 1710 and 1728 meetinghouses and first school (ca. 1804), located on the two-acre Conont-Maxy House lot. Similar testing may also locate survivals of the Newell Mill site, Newell's Tavern, and Newell Blacksmith shop, all located on the Old Post Road. Industrial survivals, including dams, tailraces, spillways, and ice houses, are located south of the Old Post Road/Mount Hope Street intersection. Occupational related features (trash pits, privies, wells) are also likely around surviving 17th and 18th century structures including the Capt. John Stearns House (ca. 1680), Town Powderhouse (1768), and the Newell Industrial site. Sheet refuse may be present at the Militia Training Field (1715) near the intersection of Old Post Road and Mount Hope Street.

(end)

8. Statement of Significance

Certifying official has considered the significance of this property in relation to other properties:

nationally statewide locally

Applicable National Register Criteria A B C D

Criteria Considerations (Exceptions) A B C D E F G

Areas of Significance (enter categories from instructions)

Architecture
Agriculture
Industry
Community Planning and Development

Period of Significance

Ca. 1781-1937

Significant Dates

Ca. 1764
1828
1892

Cultural Affiliation

N/A

Significant Person

N/A

Architect/Builder

Walker, Ezra

State significance of property, and justify criteria, criteria considerations, and areas and periods of significance noted above.

The Old Town Historic District is a well-preserved rural crossroads settlement on the Old Post Road that possesses historical significance under Criterion A as the earliest town center in the original town of Attleborough (1694-1887), as well as significance under Criterion C for its valuable examples of domestic, religious and public architecture and associated landscape. Established around the time of old Attleborough's incorporation, Old Town is the site of several religious and public buildings important in the early history of Attleborough, including: the First Congregational Church (Map #26) built in 1828, the third home to the congregation established in 1710; the Town Powderhouse (Map #39) built in 1768; and the former District #6 Schoolhouse (Map #25) which replaced a ca. 1832 schoolhouse in ca. 1840. The historic district also includes a large concentration of historic houses and buildings dating from the initial settlement period up to the late 19th and early 20th centuries, when the electric street railway prompted a small burst of suburban building. The Old Town Historic District also meets Exception A of the National Register of Historic Places.

The integrity of the district is enhanced by the intact patterns of land use which characterized Old Town during its period of significance. The relationship between buildings, improved lands, transportation corridors and natural features is to a large degree based on the settlement patterns of the eighteenth century. The suburban development of the late 19th and early 20th centuries created a light overlay of subdivision that blended into rather than disrupted these larger patterns. A relatively large amount of farmland and field divided by fences and stone walls preserve a rural character in much of the district, which is augmented by the simply landscaped suburban houselots of the late 19th and early 20th centuries.

European settlement in the Old Town area had its origins in the Rehoboth North Purchase of 1661. This land transaction consummated by Wamsutta or Alexander of the Wampanoag tribe and Captain Thomas Willett of Plymouth Colony encompassed a large region bounded by the Blackstone River on the west, the

See continuation sheet

9. Major Bibliographical References

Previous documentation on file (NPS):

- preliminary determination of individual listing (36 CFR 67) has been requested
- previously listed in the National Register
- previously determined eligible by the National Register
- designated a National Historic Landmark
- recorded by Historic American Buildings Survey # See Continuation Sheet
- recorded by Historic American Engineering Record # _____

See continuation sheet

Primary location of additional data:

- State historic preservation office
- Other State agency
- Federal agency
- Local government
- University
- Other

Specify repository:

Massachusetts Historical Commission

10. Geographical Data

Acreage of property Approximately 100 acres

UTM References

A	19	306480	4646540
	Zone	Easting	Northing
C	19	305850	4645340
E	19	305730	4646420
F	19	306000	4646570

B	19	306120	4645510
	Zone	Easting	Northing
D	19	305710	4645410

See continuation sheet

Verbal Boundary Description

See continuation sheet

Boundary Justification

See continuation sheet

11. Form Prepared By

name/title Richard E. Greenwood, Consultant with Betsy Friedberg, National Register Director
 organization Massachusetts Historical Commission date 5/15/90
 street & number 80 Boylston Street telephone (617) 727-8470
 city or town Boston state MA zip code 02116

National Register of Historic Places Continuation Sheet

Section number 8 Page 1

Old Town Historic District,
North Attleborough, Massachusetts

Bay Line on the north, the subsequent Taunton North Purchase on the east and the existing town of Rehoboth on the south. The first recorded land division among the seventy-odd purchasers was made in 1658, but actual settlement followed the Plymouth Court's confirmation of the purchase in 1666.¹ The Seven Mile River valley attracted the immediate attention of the colonists; in the same year, the Plymouth Colony awarded Captain Willett approximately 500 acres on the river at "High Squisset" in recognition of his services to the purchasers. As befitted such a prominent figure in Plymouth affairs, Willett obtained a valuable tract, rich in natural meadows and fertile river plain, and strategically located on the Bay Path or Road, a major regional route between Massachusetts Bay and Narragansett Bay. Land records indicate that Willett's Farm stretched for over a mile in a broad swath 200 rods wide along the Seven Mile River, eastward and southward from the point where the Bay Path (and today's Old Post Road) crossed the river. Much of this prized farmland is now submerged under the Luther Reservoir. Willett never settled on the land, which was but a part of his extensive holdings in the Narragansett and Plymouth regions, but the one-room cabin which now survives as part of the Stearns House ell (Map #29) indicates that a tenant occupied the farm by the late 17th century.

In 1694, the North Purchase was incorporated as the town of Attleborough at the request of the more than thirty families residing there. This early settlement was characterized by individual farmsteads like the Willett Farm laid out along the river valleys and the transportation corridors. Woodcock's garrison house at the northern end of the Bay Road's route through town was one important focus of this diffuse settlement; Daggett's grist mill at what is now Attleborough Falls was another. In the Old Town vicinity, Daniel Shepperson's house on the Bay Road near Red Rock Hill was the site for the early town meetings. Shepperson also donated land for a town pound. The precise location of the Shepperson house has not been found, though mid-18th century records refer to a pound in close proximity to the meetinghouse. Christopher Hall was another early settler here whose house has disappeared, but only recently. Demolished in 1986 and replaced by a modern structure (Map #19), the Hall House was a center-chimney plank-walled building.

The establishment of Attleborough's first meetinghouse confirmed the importance of the Old Town locale. As early as 1685, a 100-acre parcel on the Seven Mile River southeast of Willett's Farm was designated as the Ministerial Lot, in anticipation of the arrival of a settled minister. The town laid out a farmstead and constructed a house (which now survives as an archaeological site outside of the district) on part of the Lot in 1704-1706 and, in 1710, voted to build a meetinghouse on a nearby lot on the east side of the Bay Road. The latter lot was four acres of land donated by Lt. Moses Read for public uses, including militia training. The path to Attleborough Falls which ran across the southern end of the lot developed into the present Mount Hope Street. With the parsonage completed and the meetinghouse underway, the town

(continued)

National Register of Historic Places Continuation Sheet

Section number 8 Page 2

Old Town Historic District,
North Attleborough, Massachusetts

was finally able to attract a minister in 1711. Until 1743, when a second parish was created on the eastern side of town, this was the only church in Attleborough.³ As early as 1728, the congregation decided to replace the first meetinghouse. The second was erected "on the north side of the Pound . . . about 15 or 16 rods from the old meetinghouse," apparently on the west side of the Bay Road.⁴ This structure remained in service until it was replaced by the present meetinghouse in 1827.

The establishment of the church stimulated new activity on Willett's Farm. The first minister, Matthew Short, purchased the tract ca. 1710 and at the end of his tenure with the congregation in 1715, he sold it in two parcels. The western portion adjoining the Bay Road went to Jacob Newell, formerly of Roxbury; the eastern portion, which is outside the district was acquired by Captain Samuel Tyler. Both purchasers established homesteads on their lands; the Newell-Pond House on Linden Road just outside the district incorporates what may be Newell's first house. The Newell family was to hold a prominent position in Old Town over the next two centuries.⁵

In 1747, Captain John Stearns of Dedham purchased the former Christopher Hall land; during his residency in Old Town he was to have a central role in town affairs. In 1764 Stearns purchased a one-acre lot at the southeast corner of the intersection of the Bay Road (or Post Road, as it became known) and Mount Hope Street and here erected a large two-and-a-half-story house that was handsomely finished inside (Map #29). Either Stearns or Thomas Daggett, the innholder who purchased the house in 1781, installed a bar on the first floor. Members of the far-flung congregation and travelers on the Post Road must have welcomed the accommodations of a tavern here; by the late 18th century, the Newell family had established a second tavern on the east side of the Post Road just south of Stearns'. This elongated two-story building continued in service as Newell's Tavern well into the 19th century and was finally demolished in the mid-20th century. A modern house now occupies its site (Map #32).

Stearns and Jacob Newell were instrumental in the creation of another public facility in the neighborhood, the town powderhouse (Map #39). As a militia captain, Stearns was a member of the committee assigned to oversee construction of a magazine for the town's gunpowder. Newell provided the site for the magazine on an outcropping of felsite on the north side of the Mount Hope Street. Although Attleborough residents never had to resort to the magazine in their own defense, they supported the Revolutionary cause, sending Captain Stearns as their representative to the General Court, the Provisional Congress and the State Constitutional Convention.⁶

In the decades following the Revolution, Old Town retained its character as a community center. The first District #6 Schoolhouse was erected here on or near the first meetinghouse site ca. 1804. It was a two-story building; the

(continued)

National Register of Historic Places Continuation Sheet

Section number 8 Page 3

Old Town Historic District,
North Attleborough, Massachusetts

Attleborough Society for the Encouragement of Agriculture, Art and Social Intercourse funded the construction of the assembly hall on the second floor. This building which became known as the Agricultural Hall, stood until the late 19th century. Its role as a schoolhouse was assumed by a new structure ca. 1832. This schoolhouse (Map #25), located just north of the first, remained in use until 1938. Old Town was also home to the First Universalist Society of Attleborough during this period. Founded in the assembly room in Newell's Tavern in 1816, the Society erected a church just south of the First Congregational Church and opposite Newell's Tavern two years later. In 1841, the main body of Universalists relocated to North Attleborough and the church was soon after sold to the Methodists and moved to North Attleborough as well, where it was subsequently destroyed by fire prior to 1894. No visible evidence of the building remains at the Old Town site.

Beginning in the Federal period Attleborough's character was increasingly influenced by the growth of manufacturing. While industrialization had its greatest effect on Attleborough's other villages, Old Town had its share of industrial activities. Obed Robinson, one of the founders of Attleborough's great jewelry industry, purchased a quarter-acre lot on Post Road in 1788 and built the house that still occupies the site (Map #4). The small size of the lot suggests that Robinson was pursuing his trade as silversmith here rather than farming. He did not stay long, selling the house in 1792 and moving to nearby Robinsonville where he established one of the town's first jewelry firms ca. 1807.⁸

The Newell family initiated a more permanent manufacturing operation on their mill privilege on the Seven Mile River where it was crossed by the Post Road (Map #35). By 1815 Jabez Newell II was operating a water-powered blacksmith shop here. This may have been the first use of water power at this site, but it was far from the last. By 1827 a two-story machine shop had replaced the blacksmith shop; most likely the new shop was supplying the region's widely proliferating textile industry. Two years later Royal Sibley purchased the property and established a cotton mill, but button-making supplanted textile manufacturing ca. 1833. A succession of buttonmakers worked here including Elisha G. May, who subsequently lived in the Stearns House, Thomas Sadler and William H. Robinson. Robinson went on to become a leading manufacturer of buttons and other jewelry in a second shop just south of his house at the corner of Old Post Road and Draper Road. Charles Rohrback, whose house stood next to the Gemeinhardt House (Map #16), was a jeweler who worked in the Robinson shop. (The Robinson shop was destroyed by the construction of Route I-295 and the Robinson House is located outside this district.) It was in this first shop that jewelers reportedly first adapted water power to jewelry manufacturing and established one of Attleborough's first electroplating operations. After the Civil War, the property was converted to a dyehouse and bleachery. About 1881, fire destroyed the buildings, except for the adjacent mill operator's house, which still survives (Map #31). The final occupant of

(continued)

National Register of Historic Places Continuation Sheet

Section number 8 Page 4

Old Town Historic District,
North Attleborough, Massachusetts

the property was the Old Town Ice Company, operated by the Todd family, which used the former mill pond for its ice rather than its water power.

The Eldridge brickyard, located behind the Woodcock-Eldridge House (Map #10) on the east bank of the Seven Mile River, was another of Old Town's mid-19th century industries. Joseph Eldridge, who purchased the property from Jonathan Woodcock in 1860, operated this brick yard, using the claybank located along the Seven Mile River southwest of the house. Eldridge and his sons produced thousands of bricks here between the 1860s and the 1890s, before depleting the clay deposits. The Lonsdale Company's Ashton mill village in Cumberland, Rhode Island, (ca. 1867) was constructed of Eldridge bricks.¹⁰

Industrial development did not transform Old Town either physically or socially, unlike the villages of North Attleborough, Attleborough Falls and Attleborough. The Old Town industries were small in scale and they didn't disrupt the older patterns of agricultural land use. They do not seem to have brought in large numbers of resident workers; only a handful of one-and-a-half-story Greek Revival cottages were added to the local housing stock during this period. By the late 19th century Old Town was already being recognized as a place that had been largely untouched by the dramatic forces of industrialization and urbanization.

North Attleborough village on the other hand had developed into one of the leading jewelry manufacturing centers in the country in the middle decades of the 19th century, and, by the late 19th century, the neighboring village of Attleborough was surpassing its growth in that field. Both villages, and, to a lesser extent the manufacturing community at Attleborough Falls, assumed a more urban character with considerable commercial, institutional, and residential growth fueled by the industrial expansion. South of Old Town, Pawtucket, Rhode Island, formed an even greater urban center. With an economic base in textile and machinery manufactures, Pawtucket and the adjoining industrial community of Central Falls constituted a major commercial center and labor market for the neighboring Rhode Island and Massachusetts towns, including Attleborough.

The electric streetcar, introduced at the end of the century, extended the influence of these urban centers beyond their walking neighborhoods and along the transit corridors between Pawtucket, North Attleborough and Attleborough. Far more than the earlier railroad lines, the streetcars encouraged linear residential construction along their routes. There were two principal routes in Attleborough, one that ran from North Attleborough to Attleborough along Elm and North Streets and the other from North Attleborough to Pawtucket following the Old Post Road. A small construction boom, resulting from the development of these street car lines, produced the James Adams House (Map #33).

(continued)

National Register of Historic Places Continuation Sheet

Section number 8 Page 5

Old Town Historic District,
North Attleborough, Massachusetts

The construction of the Interstate Electric Street Railway from North Attleborough to Pawtucket in 1892 was a major watershed in the history of Old Town, or West Attleborough as it was known in the late 19th century. This rail line, which ran down Old Post Road through Old Town, effectively made the area part of the suburban periphery of the major industrial city of Pawtucket and the increasingly urban manufacturing center of North Attleborough. More than ten new houses were built in the first two decades after the streetcars went into service and many more were proposed by developers.¹¹

The most immediate response to the new car line was made by Edward Kent and his brother-in-law M. Carleton Lathrop, who subdivided the former Stearns and Newell land south of Mount Hope Street between Old Post Road and Linden Avenue in 1892. They had the plan of a "Subdivision of Kentston Park" drawn up, which divided the bulk of the land formerly contained in the Elisha G. May estate (east of Old Post Road, south of Mount Hope Street, west of Linden Avenue, and on both sides of Stagecoach Road) into seventy-eight house lots. The present Stagecoach Road was laid out at this time under the name of Columbus Avenue. In 1908, Daniel B. Hunt purchased twenty lots and sometime thereafter built his house on lots 4 and 5, as well as an identical dwelling on lots 12, 13 and 16. With the exception of the Perry House at 15 Mount Hope Street, the Hunt houses were the only residences to be built in Kentston Park until after World War II. Hunt sold this house to Ruth and Frederick Elliot in 1934, and it remained in the Elliot family until 1963. Kentston Park never progressed far beyond the planning stage, except for two houses built by the Hunt family on Stagecoach Road (originally laid out as Columbus Road) and the Edward Perry House at the corner of Mount Hope Street and Linden Avenue.¹² Except for the Daniel Henry Hunt House (Map #41), the houses have lost their integrity and lie outside the district.

Additional subdivision occurred at the northern end of the district on portions of the former Seneca Stanley Farm (Map #8), where four houses were built in the early 20th century, the William H. Young House being the northernmost house (Map #s 1,3,5,6). The Young House has since been subdivided from the original three-acre lot, which is still open land, bounded on the north by I-295. At the southern end of the district, members of the Todd family erected a row of imposing suburban villas opposite their Old Town Ice Company operation at the same time (Map #s 33, 34, 37).

This suburban growth added to Old Town's population a significant number of residents who worked elsewhere, mainly in North Attleborough center but also in Pawtucket. For the most part these commuters held managerial positions such as mill superintendent (John Gemeinhardt, Map #16), banker (Frank Maxcy, Map #27, 28) and master carpenter (Edward Fuller, Map #6). Despite this growth, Old Town was still largely agricultural in nature, with the bulk of the land in dairy farming. Local farmers such as Horace Eldridge (Map #13) and Robert McCartney (Map #11) found ready markets for their produce in the

(continued)

National Register of Historic Places Continuation Sheet

Section number 8 Page 6

Old Town Historic District,
North Attleborough, Massachusetts

nearby cities. In a similar fashion the Old Town Ice Company prospered, providing ice to local and urban markets, until the electric refrigerator achieved popular acceptance in the 1930s.

As Old Town entered the middle decades of the 20th century, new residential building dwindled, although a new industrial operation appeared. The Old Town Lace Works, formed by Ernest Wharton and George Pepper, established their modest factory on Old Post Road in 1937 (Map #2). This small textile operation, closer in scale to its predecessors of the early 19th century than its contemporaries, remained in business until 1959, when the company dissolved in the face of technological change in the industry.

The automobile brought an end to the Interstate streetcar line ca. 1926, when the tracks were taken up. Buses replaced the streetcars for a time, but their service was minimal.¹³ Though the private automobile became the dominant form of transportation, it had relatively little impact on the physical appearance of Old Town, as automobile traffic and related commercial development bypassed Old Post Road in favor of Washington Street (Route 1) to the west. The construction of Route I-295 ended this period of benign neglect in the 1970s and introduced the single greatest intrusion into the district. Except for I-295, the past fifty years have seen only small-scale change in Old Town, consisting mostly of new single family houses located between the historic properties. In this way, new building has created a new layer on the landscape without disturbing the older patterns that underlie it.

(continued)

National Register of Historic Places Continuation Sheet

Section number 8 Page 7

Old Town Historic District,
North Attleborough, Massachusetts

Archaeological Significance

Since patterns of prehistoric occupation in North Attleborough are poorly understood, any surviving sites would be significant. Sites in this area offer the potential for a better understanding of settlement and subsistence in the interior Narragansett Bay drainage. The location of Wamsutta Formation felsites in the Red Rock Hill locale of the district also indicates sites may be present that could aid in the study of prehistoric lithic tool technologies.

Historic archaeological remains described above have the potential for providing detailed information on the social, cultural, and economic patterns that characterized the earliest town center in the original towns of Attleborough. These remains can also help us better understand the district's development as a rural crossroads settlement on the Old Post Road. Industrial remains in the district may help us understand the importance of blacksmithing, manufacture and the ice trade in the district's development. Archaeological remains in Old Town can be important because they include most aspects of the district's development, including residential, industrial, religious, educational, transportation and agricultural elements.

(end)

National Register of Historic Places Continuation Sheet

Old Town Historic District,
North Attleborough, Massachusetts

Section number 8 Page 8

Notes

1. Leonard Bliss Jr., The History of Rehoboth (Boston, 1836), p. 67;
John Daggett, A Sketch of the History of Attleborough From Its Settlement
To The Division, edited and completed by Amelia Sheffield Daggett (Boston,
1894), pp. 45-50.
2. Daggett, p. 89.
3. *ibid*, pp. 226-230, 235.
4. *ibid*, p. 235.
5. Bristol County Deed Book 9, Pages 349, 707.
6. Daggett, pp. 119, 122-127.
7. Daggett, pp. 279-81.
8. Bristol County Deed Book 67, Page 303; Book 71, Page 45; Daggett, P. 368.
9. Bristol County Deed Book 100, Page 17; Daggett pp. 352-3.
10. Clayton Batchelder and J.M. Berndt, Massachusetts Historical Commission
Inventory Form, "549 Old Post Road," 1979.
11. Daggett, p. 450-1.
12. Bristol County Plat Book 5, Page 58, "Subdivision of Kentston Park of Old
Town, Massachusetts"; Deed Bood 634, Page 347; Deed Book 537, Page 453.
13. Personal Communication, George Elliott to the author (2/4/87).

National Register of Historic Places Continuation Sheet

Old Town Historic District,
North Attleborough, Massachusetts

Section number 9 Page 1

9. Major Bibliographic References

Batchelder, Clayton and J.M. Berndt, Massachusetts Historical Commission
Inventory Forms, Area 4, Nos. 3,4,5,7,19,20,21,23,24,26,31,32,36,37,53. 1978.

Beers, F.W., Atlas of Bristol County, Massachusetts (New York, 1871).

Bliss, Leonard, Jr., The History of Rehoboth (Boston, 1836).

Bristol County Deed and Plat Books, Bristol County Courthouse, Taunton, MA.

Capron, Joseph, "Map of Attleborough, Massachusetts" (Boston, 1832).

Daggett, John, A Sketch of the History of Attleborough From Its Settlement To
The Division, edited and completed by Amelia Daggett Sheffield (Boston, 1894).

Dix, Marjorie Ashworth, That Reminds of North Attleborough (North Attleborough
Attleborough Historical Society, 1965).

Draper, Thomas W.M., The Drapers In America (New York, 1892).

Elliott, George, Personal Communication to the author, 2/4/87.

Evert and Richards, Atlas of Bristol County, Massachusetts (Phila., 1895).

Gemeinhardt, John P., Personal Communication to the author, 6/22/86.

U.S. Geological Survey Attleboro Quadrangle, Massachusetts-Rhode Island,
7.5 Minute Series, 1949.

Walling, Henry F., "Map of Bristol County, Massachusetts" (New York, 1858).

Previous Documentation (cont'd)

North Attleboro Vicinity

Captain Stearns House, Old Post Road (HABS 1935).

Congregational Church, Old Post Road (HABS 1935, 1938).

Powder House, Mount Hope Street (HABS 1935).

National Register of Historic Places Continuation Sheet

Old Town Historic District,
North Attleborough, Massachusetts

Section number 10 Page 1

Verbal Boundary Description

Beginning at the southeasterly corner of Lot 4 (all references are made to North Attleborough Plat 25) on Mount Hope Street, the historic district boundary proceeds in a generally northerly line following the eastern boundary lines of Lot 4 to the intersection with the rear or easterly lot line of Lot 12; thence the district boundary runs in a generally northerly way along the rear lot lines of Lots 12 and 7 to the northern lot line of Lot 7; thence the district boundary runs westerly along the northern boundaries of Lots 7, 160 and 8 to the eastern curb of Old Post Road; thence southerly along said road two hundred and forty feet; thence westerly across said road in a straight line to the northeasterly corner of Lot 51; thence westerly along the northern lot line of Lot 50 to the northwesterly corner of said lot; thence southerly along western lot lines of Lots 50, 48 and 62; thence easterly along the southern lot line of Lot 62 to its intersection with lot 153; thence southerly along the rear lot lines of Lots 153, 154 and 155 to the northern lot line of Lot 43; thence westerly along the northern lot line of Lot 43; thence westerly along the northern lot line of Lot 43 and southerly along the western lot line of Lot 43 to Lot 79; thence southerly along the westerly lot lines of Lots 79, 42, 44 and 65 to the northern curb of Allen Avenue; thence easterly along the line of Allen Avenue to the easterly curb of Old Post Road; thence southerly along Old Post Road to its intersection with the southern lot line of Lot 34; thence easterly and northerly along the lot lines of Lot 34 to its northeast corner; thence in a straight line to the southeastern corner of Lot 33; thence northerly along the easterly lot lines of Lots 33, 32, 31 and 60; thence across Stagecoach Road in a straight line to the southeast corner of Lot 156; thence northerly along the easterly lot line of Lots 156 and 18; thence north in a straight line to the northerly curb of Mount Hope Street and thence easterly along said curb to the southeasterly corner of Lot 4, the point of beginning.

Boundary Justification

The boundaries of the Old Town Historic District are drawn to include the greatest concentration of historic properties in this historic linear settlement. The boundaries generally follow the lot lines of these properties so as to include contributing landscape features, primarily fields, that preserve the historic patterns of land use. The I-295 highway right-of-way provides the northern boundary; on the east and south sides the boundaries are drawn to exclude more recent residential development and on the west, to exclude the open space on the west side of the Seven Mile River that does not directly contribute to the significance of the district.

(end)

District Data Sheet
Old Town Historic District, North Attleborough, Massachusetts

<u>MAP#</u>	<u>MHC#</u>	<u>HISTORIC NAME</u>	<u>STREET ADDRESS</u>	<u>DATE OF CONSTRUCTION</u>	<u>STYLE</u>	<u>STATUS/ RESOURCE</u>
1	273	William Young House Shed	420 Old Post Road	c. 1904 late 20th c.	Vernacular	C/B NC/B
2	272	Oldtown Lace Works	478 Old Post Road	c. 1937	Industrial	C/B
3	270	Albert Bibeau House Garage	484 Old Post Road	c. 1905 early 20th c.	Vern. Queen Anne	C/B C/B
4	-	Robinson/Newell House	493 Old Post Road	c. 1788	Federal	C/B
5	269	Dosithe Bibeau House Garage Summer House Shed	494 Old Post Road	c. 1905 early 20th c. early 20th c. early 20th c.	Vern. Queen Anne	C/B C/B C/B C/B
6	268	Edward Fuller House Garage	506 Old Post Road	c. 1914 early 20th c.	Shingle	C/B C/B
7	267	Eben Sylvester House	513 Old Post Road	c. 1880	Eastlake	C/B
8	-	Titus/George/Stanley House Garage Shed Shed	526 Old Post Road	c. 1799 mid 20th c. mid 20th c. mid 20th c.	Federal	C/B NC/B NC/B NC/B
9	266	Samuel McCartney House Garage Workshop	541 Old Post Road	c. 1900 mid-20th c. late 20th c.	Class. Rev.	C/B NC/B NC/B
10	55a	Woodcock/Eldridge House Shed Toolshed Wellhouse Brickyard	549 Old Post Road	c. 1843 c. 1843 late 20th c. c. 1843 c. 1843	Greek Revival	C/B C/B NC/B C/B C/Sf
11	265	Robert McCartney House Barn Shed Shed	548 Old Post Road	c. 1895 mid 20th c. mid 20th c. mid 20th c.	Vern. Queen Anne	C/B NC/B NC/B NC/B
12	264	House	563 Old Post Road	late 20th c.		NC/B

District Data Sheet
Old Town Historic District, North Attleborough, Massachusetts

<u>MAP#</u>	<u>MHC#</u>	<u>HISTORIC NAME</u>	<u>STREET ADDRESS</u>	<u>DATE OF CONSTRUCTION</u>	<u>STYLE</u>	<u>STATUS/RESOURCE</u>
13	263	Horace Eldridge House garage	575 Old Post Road	c. 1911 early 20th c.	Col. Rev.	C/B C/B
14	262	Herbert Duxbury Laundry shed	597 Old Post Road	c. 1924 20th c.	Vernacular	NC/B NC/B
15	261	Herbert Duxbury House garage	605 Old Post Road	c. 1924 20th c.	Vernacular	C/B NC/B
16	260	John Gemeinhardt House Sadler-Rohrbach Housesite chicken coop shed shed garage pool	610 Old Post Road	1938 c. 1832? c. 1924 c. 1924 20th c. mid-20th c. 20th cent.	Cape	C/B C/Si C/B C/B C/B NC/B NC/St.
17	259	House garage	624 Old Post Road	mid-20th c. mid-20th c.	---	NC/B NC/B
18	4	1st Congr. Parsonage garage	632 Old Post Road	1844-50 mid-20th c.	Gr. Rev.	C/B NC/B
19	-	House barn	633 Old Post Road	1988 late 19th c.	---	NC/B C/B
20	-	House	639 Old Post Road	1988	---	NC/B
21	256	M.C. & Clara Lathrop Hse. shed	649 Old Post Road	c. 1902 mid-20th c.	Victorian Vernacular	C/B NC/B
22	257	House shed	652 Old Post Road	mid-20th c. mid-20th c.	---	NC/B NC/B
23	-	House	653 Old Post Road	1988	---	NC/B
24	258	House	664 Old Post Road	late 20th c.	---	NC/B
25	7	Dist. #6 School	670 Old Post Road	c. 1840	Gr. Rev.	C/B
26	5	1st Congr. Church	675 Old Post Road	1828	Federal	C/B

District Data Sheet
Old Town Historic District, North Attleborough, Massachusetts

<u>MAP#</u>	<u>MHC#</u>	<u>HISTORIC NAME</u>	<u>STREET ADDRESS</u>	<u>DATE OF CONSTRUCTION</u>	<u>STYLE</u>	<u>STATUS/ RESOURCE</u>
27	17	Conant-Maxy House barn	680 Old Post Road	c. 1891 late 19th c.	Queen Anne	C/B C/B
28	255	Frank Maxcy House shed stone trough	683 Old Post Road	c. 1933 early 20th c.	Col. Rev.	C/B C/B C/O
29	-	Capt. John Stearns Hse. garage	692 Old Post Road	c. 1680, 1731 mid-20th c.	Georgian	C/B NC/B
30	250	House shed shed shed	700 Old Post Road	mid-20th c. mid-20th c. mid-20th c. mid-20th c.		NC/B NC/B NC/B NC/B
31	236	Robinson-Sadler House	709 Old Post Road	c. 1847	Gr. Rev.	C/B
32	240	House	726 Old Post Road	late 20th c.		NC/B
33	244	James Adams House garage	732 Old Post Road	c. 1903 early 20th c.	Col. Rev.	C/B C/B
34	-	Henry Todd House barn shed former milk room	742 Old Post Road	c. 1903 early 20th c. early 20th c. early 20th c.	Queen Anne	C/B C/B C/B C/B
35	-	Newell/Robinson indust. site Mill Pond	743 Old Post Road	1815 et seq	---	C/Si C/St
36	904	Bridge	opp. 742 Old Post Road	c. 1886	---	C/St
37	242	Geo. & Annie Todd Hse. shed	778 Old Post Road	c. 1905 mid-20th c.	Queen Anne	C/B NC/B
38	254	Sadler-Stokes House shed	8 Mount Hope Street	c. 1858, 1926 late 20th c.	Col. Rev.	C/B NC/B
39	3	Town Powderhouse	10 Mount Hope Street	1768	---	C/St
40	251	House Barn Peavy-Todd House site	20 Mount Hope Street	late 20th c. mid-19th c. mid-19th c.	---	NC/B C/B C/Si

District Data Sheet
 Old Town Historic District, North Attleborough, Massachusetts

<u>MAP#</u>	<u>MHC#</u>	<u>HISTORIC NAME</u>	<u>STREET ADDRESS</u>	<u>DATE OF CONSTRUCTION</u> mid-20th c.	<u>STYLE</u>	<u>STATUS/RESOURCE</u> NC/B
		shed				
41	249	Daniel B. Hunt House garage	3 Stagecoach Road	c. 1908 early 20th c.		C/B C/B
42	-	Training Field Site	Old Post Road			C/Si
-	-	Stone Wall System				C/St

<u>TOTAL</u>	<u>Contributing</u>	<u>Noncontributing</u>
Building	47	35
Object	1	0
Site	5	0
Structure	5	1
	<u>58</u>	<u>36</u>

United States Department of the Interior
National Park Service

National Register of Historic Places
Continuation Sheet

Section number _____ Page _____

SUPPLEMENTARY LISTING RECORD

NRIS Reference Number: 91000599 Date Listed: 05/30/91

Old Town Historic District
Property Name

Bristol
County

MA
State

N/A
Multiple Name

This property is listed in the National Register of Historic Places in accordance with the attached nomination documentation subject to the following exceptions, exclusions, or amendments, notwithstanding the National Park Service certification included in the nomination documentation.


Signature of the Keeper

5/30/91
Date of Action

=====

8. Statement of Significance: Area(s) and Period(s)

Agriculture is not a justified area of significance.
The period of significance is 1768-1940; the significant date c.1764 should read 1768.
This information was discussed with Betsy Friedburg, MASHPO, by telephone.

DISTRIBUTION:
National Register property file
Nominating Authority (without attachment)

UNITED STATES DEPARTMENT OF THE INTERIOR
NATIONAL PARK SERVICE

NATIONAL REGISTER OF HISTORIC PLACES
EVALUATION/RETURN SHEET

REQUESTED ACTION: NOMINATION

PROPERTY Old Town Historic District
NAME:

MULTIPLE
NAME:

STATE & COUNTY: MASSACHUSETTS, Bristol

DATE RECEIVED: 4/15/91 DATE OF PENDING LIST: 4/30/91
DATE OF 16TH DAY: 5/16/91 DATE OF 45TH DAY: 5/30/91
DATE OF WEEKLY LIST:

REFERENCE NUMBER: 91000599

NOMINATOR: STATE

REASONS FOR REVIEW:

APPEAL: N DATA PROBLEM: N LANDSCAPE: N LESS THAN 50 YEARS: N
OTHER: N PDIL: N PERIOD: N PROGRAM UNAPPROVED: N
REQUEST: N SAMPLE: N SLR DRAFT: Y NATIONAL: N

COMMENT WAIVER: N

ACCEPT RETURN REJECT 5/30/91 DATE

ABSTRACT/SUMMARY COMMENTS:

RECOM./CRITERIA Accept
REVIEWER Wage
DISCIPLINE Architectural History
DATE 5/30/91

DOCUMENTATION see attached comments Y/N see attached SLR Y/N

CLASSIFICATION

count resource type

STATE/FEDERAL AGENCY CERTIFICATION

FUNCTION

historic current

DESCRIPTION

architectural classification
 materials
 descriptive text

SIGNIFICANCE

Period Areas of Significance--Check and justify below

Specific dates Builder/Architect
Statement of Significance (in one paragraph)

summary paragraph
 completeness
 clarity
 applicable criteria
 justification of areas checked
 relating significance to the resource
 context
 relationship of integrity to significance
 justification of exception
 other

BIBLIOGRAPHY

GEOGRAPHICAL DATA

acreage verbal boundary description
 UTM's boundary justification

ACCOMPANYING DOCUMENTATION/PRESENTATION

sketch maps USGS maps photographs presentation

OTHER COMMENTS

Questions concerning this nomination may be directed to

_____ Phone _____

Signed _____ Date _____



OLD TOWN HISTORIC DISTRICT

NORTH ATTLEBOROUGH, MA

CAPTAIN JOHN STEARNS HOUSE

6/88

Bristol CMA

Old Town Historic District

Captain John Stearns House
Old Post Road
North Attleborough, MA.

John Corvese, photographer 6/88
Negative on file at NAHC



OLD TOWN HISTORIC DISTRICT

NORTH ATTLEBOROUGH, MA

TOWN POWDER HOUSE

9/88

Busteneo MA

Old Town Historic District
Town Powder House
Mount Hope Street
North attleborough, MA.

John Corvese, photographer 9/88

South (front) elevation
Negative on file at NAHC



Old Town Historic District

NORTH ATTLEBOROUGH, MA

OLD TOWN SCHOOLHOUSE

WEST ELEVATION

9/88

Bristol Co MA

Old Town Historic District

Old Town Schoolhouse

Old Post Road

North Attleborough, MA.

John Corvese, Photographer 9/88

West (front) elevation

Negative on file at NAHC



OLD TOWN HISTORIC DISTRICT
NORTH ATTLEBOROUGH, MA *Bristol Co MA*

JAMES ADAMS HOUSE
WEST ELEVATION

Old Town Historic District

James Adams House
732 Old Post Road
North Attleborough, MA.

John Corvese, photographer, 9/88
Negative on file at NAHC

West (front) elevation



OLD TOWN HISTORIC DISTRICT
NORTH ATTLEBOROUGH, MA
Busene Co MA
INTERIOR, CAPTAIN JOHN STEARNS HOUSE

6/88

Old Town Historic District
Captain John Stearns House
Old Post Road
North Attleborough, MA.

John Corvese, photographer 6/88
Fireplace, southeast chamber
second story



OLD TOWN HISTORIC DISTRICT

NORTH ATTLEBOROUGH, MA
Busene cumt

INTERIOR, CAPTAIN JOHN STEARNS HOUSE

6/88

Old Town Historic District

Captain John Stearns House
Old Post Road

North Attleborough, MA.

John Corvese, photographer 6/88

Negative on file at NAHC

Northeast parlor, fireplace



OLD TOWN HISTORIC DISTRICT

NORTH ATTLEBOROUGH, MA
Bristol County

FIRST CONGREGATIONAL CHURCH

FRONT ELEVATION

9/88

Old Town Historic District
First Congregational Church
Old Post Road
North Attleborough, MA.

John Corvese , photographer 9/88
South and east (front) elevations.



OLD TOWN HISTORIC DISTRICT
NORTH ATTLEBOROUGH, MA

Bristol Co MA

FIRST CONGREGATIONAL CHURCH
9/88

Old Town Historic District

First Congregational Church
Old Post Road
North Attleborough, MA.

John Corvese, photographer 9/88

Negative on file at NAHC
Interior view, balcony and organ.



HYMNS
21
365
322
SEL. 74

HYMNS
21
365
322
SEL. 74

OLD TOWN HISTORIC DISTRICT
NORTH ATTLEBOROUGH, MA
Bristol CMA

FIRST CONGREGATIONAL CHURCH.

9/88

Old Town Historic District

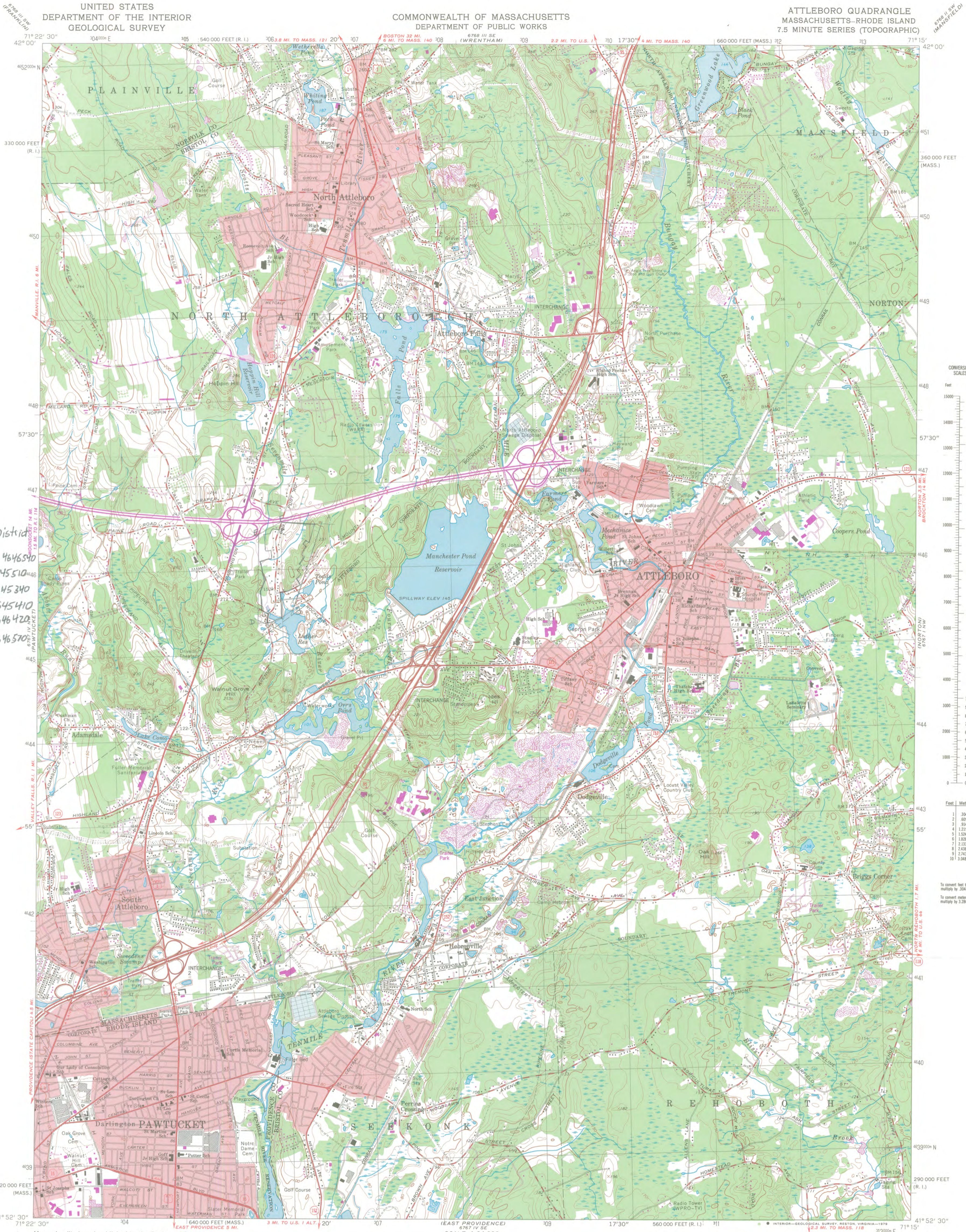
First Congregational Church

Old Post Road

North Attleborough, MA.

John Corvese, photographer, 9/88
Negative on file at NAHC

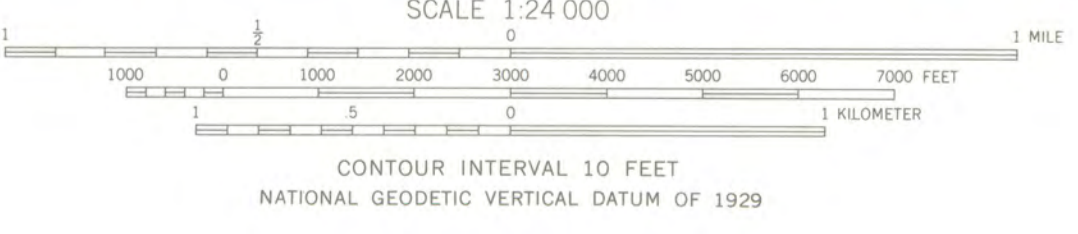
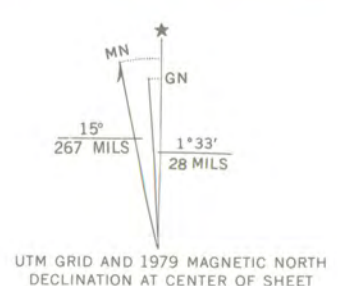
View of the altar (south/front elev.)



Old Town
Historic District
A: 19,306480.4646540
B: 19,306120.4645510
C: 19,305850.4645340
D: 19,305710.4645410
E: 19,305730.4646420
F: 19,306000.4646520

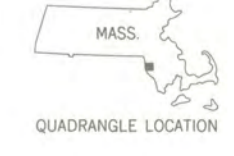


Mapped, edited, and published by the Geological Survey
Control by USGS, USC&GS, and Massachusetts Geodetic Survey
Topography by planetable surveys 1935 and 1938-1939
Revised 1964
Polyconic projection. 1927 North American datum
10,000-foot grids based on Massachusetts coordinate system,
mainland zone, and Rhode Island coordinate system
1000-meter Universal Transverse Mercator grid,
zone 19
Red tint indicates areas in which only landmark buildings are shown
Revisions shown in purple compiled in cooperation with State of
Massachusetts agencies from aerial photographs taken 1977 and other
source data. This information not field checked. Map edited 1979



ROAD CLASSIFICATION

Heavy-duty	Light-duty
Medium-duty	Unimproved dirt
Interstate Route	U.S. Route
	State Route

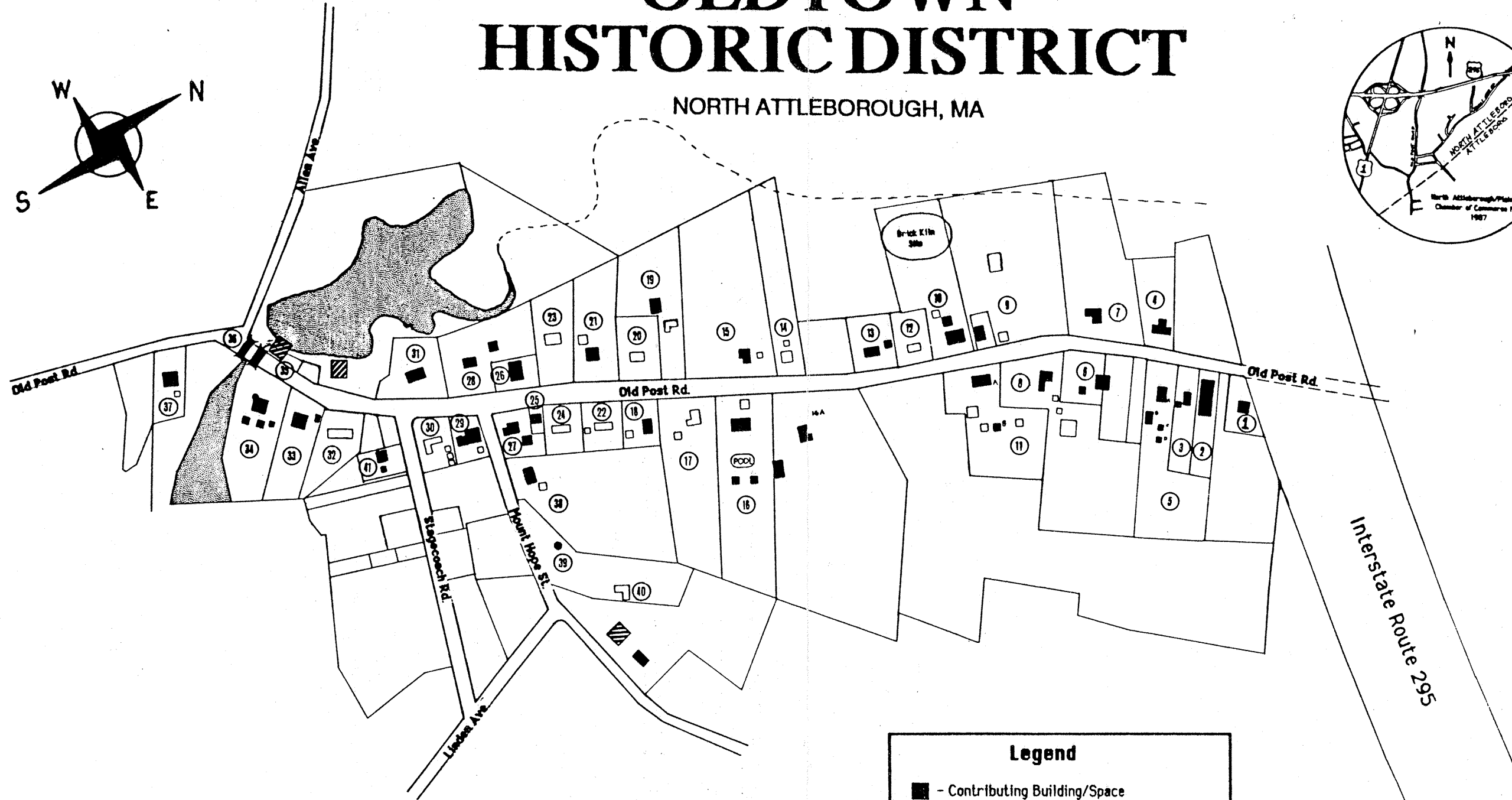
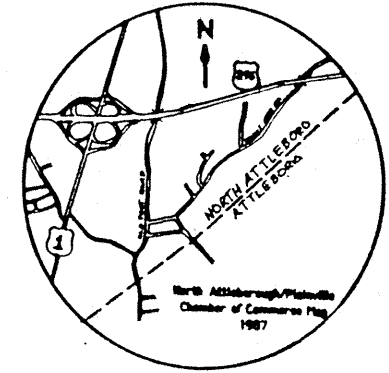
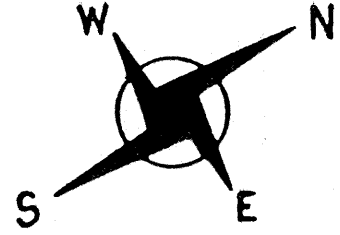


FOR SALE BY U.S. GEOLOGICAL SURVEY, RESTON, VIRGINIA 22092
A FOLDER DESCRIBING TOPOGRAPHIC MAPS AND SYMBOLS IS AVAILABLE ON REQUEST

ATTLEBORO, MASS.-R. I.
N4152.5-W7115/7.5
1964
PHOTOREVISED 1979
AMS 6767 IV NE-SERIES V814

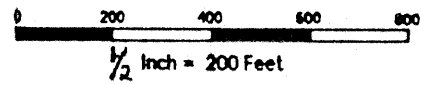
OLDTOWN HISTORIC DISTRICT

NORTH ATTLEBOROUGH, MA



Legend

- - Contributing Building/Space
- - Non Contributing Building
- ▨ - Archeological Site
- ▩ - Body Of Water
- ① - House site on Inventory Data Sheet
- - Other Structure



RECEIVED

DEC 24 1990


OWNER OBJECTION IS
FOR VACANT PARCEL OPPOSITE
295 OLD POST ROAD, OUTSIDE
DISTRICT BOUNDARIES.

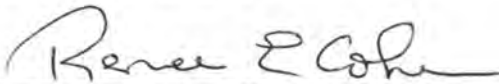
MASS. HIST. COMM.

Massachusetts Historical Commission
80 Boylston Street
Boston, MA 02116

OBJECTION TO INCLUSION
OF PROPERTY IN NATIONAL
REGISTER

The undersigned owners of Lots 100 and 160 on Assessor's Plat 25 of the Assessor's Plats of the Town of North Attleborough, Massachusetts hereby object to the inclusion of their property in the National Register in accordance with the National Historic Preservation Act and 36 CFR part 60. The reason for this objection, among others is that there are no historic buildings on their property and their property is not necessary to the Old Town Historic District which is now under consideration.


Earle F. Cohen


Renee E. Cohen

State of Rhode Island
County of Newport

Page 2

In Newport in said County this 17th day of December, 1990
before me personally appeared Earle F. Cohen and Renee E. Cohen,
to me known and known by me to be the persons executing the
foregoing objection and they acknowledged the same to be their
free act and deed.

Christopher M. West
Notary Public
My Commission Expires: June 30, 1991



March 4, 1991

Carol Shull
National Register of Historic Places
Department of the Interior
National Park Service
P.O. Box 37127
Washington, DC 20013-7127

Dear Ms. Shull:

Please find enclosed the following nomination:

Old Town Historic District, Old Post Road, Mount Hope Street and Stagecoach Road, North Attleborough (Bristol County), Massachusetts 02760.

There has been no owner objection for properties within the district.

The nomination has been voted eligible by the State Review Board and has been signed by the State Historic Preservation Officer. Owners were notified of pending State Review Board consideration 30-75 days before the meeting and were afforded the opportunity to comment. Comments received to date have been attached to the nomination.

Sincerely,

Betsy Friedberg
Betsy Friedberg
National Register Director
Massachusetts Historical Commission

Enclosure: