



Main Street Historic District  
Tuskegee, Macon County, Alabama

Ellen Mertins, 1983

Alabama Historical Commission

Macon County Courthouse and North  
Main St. from square looking north

Photo number: 1/20



Slone's HOUSE  
DORFMEYER

VERMONT PLACE

E E  
& VES VARIETY

NO RIGHT TURN

Main Street Historic District  
Tuskegee, Macon County, Alabama

Ellen Mertins, 1983

Alabama Historical Commission

Looking west along south side of  
King Highway from the intersection  
with South Main

Photo number: 2/20



Main Street Historic District  
Tuskegee, Macon County, Alabama

Ellen Mertins, 1983

Alabama Historical Commission

Looking south along South Main from  
intersection with King Highway

Photo number: 3/20



Main Street Historic District  
Tuskegee, Macon County, Alabama

Ellen Mertins, 1983

Alabama Historical Commission

Looking west along north side of  
North Side St. from intersection  
with Maple Street

Photo number: 4/20





Main Street Historic District  
Tuskegee, Macon County, Alabama

Ellen Mertins, 1983

Alabama Historical Commission

Looking south along east side of  
South Main Street from intersection  
with King Highway

Photo number: 5/20



POP LIBRA  
POP BOOKS

WOODWELL  
STORE

Main Street Historic District  
Tuskegee, Macon County, Alabama

Ellen Mertins, 1983  
Alabama Historical Commission

Looking south along east side of  
South Main Street from middle of  
first block

Photo number: 6/20



Main Street Historic District  
Tuskegee, Macon County, Alabama

Ellen Mertins, 1983

Alabama Historical Commission

Looking south from north side of  
Tuskegee Square

Photo number: 7/20



Main Street Historic District  
Tuskegee, Macon County, Alabama

Ellen Mertins, 1983

Alabama Historical Commission

Looking north at the north side of  
King Highway west of Square

Photo number: 8/20





V&S VARIETY

John Hood

MACON  
DRUGS

W16

Main Street Historic District  
Tuskegee, Macon County, Alabama

Ellen Mertins, 1983

Alabama Historical Commission

Looking southwest at west side of  
Westside Street from intersection  
with North Side Street

Photo number: 9/20



Main Street Historic District  
Tuskegee, Macon County, Alabama

Ellen Mertins, 1983

Alabama Historical Commission

Looking southeast along east side  
of East Side Street

Photo number: 10/20



Main Street Historic District  
Tuskegee, Macon County, Alabama

Ellen Mertins, 1983

Alabama Historical Commission

Lipscombe House (156)

Photo number: 11/20



Main Street Historic District  
Tuskegee, Macon County, Alabama

Ellen Mertins, 1983  
Alabama Historical Commission

Looking south on South Main Street  
with #158 (Heard House) in  
foreground

Photo number: 12/20



E SPRING



Main Street Historic District  
Tuskegee, Macon County, Alabama

Ellen Mertins, 1983

Alabama Historical Commission

400 N. Main Street (#20)

Photo number: 13/20



Main Street Historic District  
Tuskegee, Macon County, Alabama

Richard Dozier, 1979

Alabama Historical Commission

Menefee-Webb House (305 N. Main  
Street) #19

Photo number: 14/20



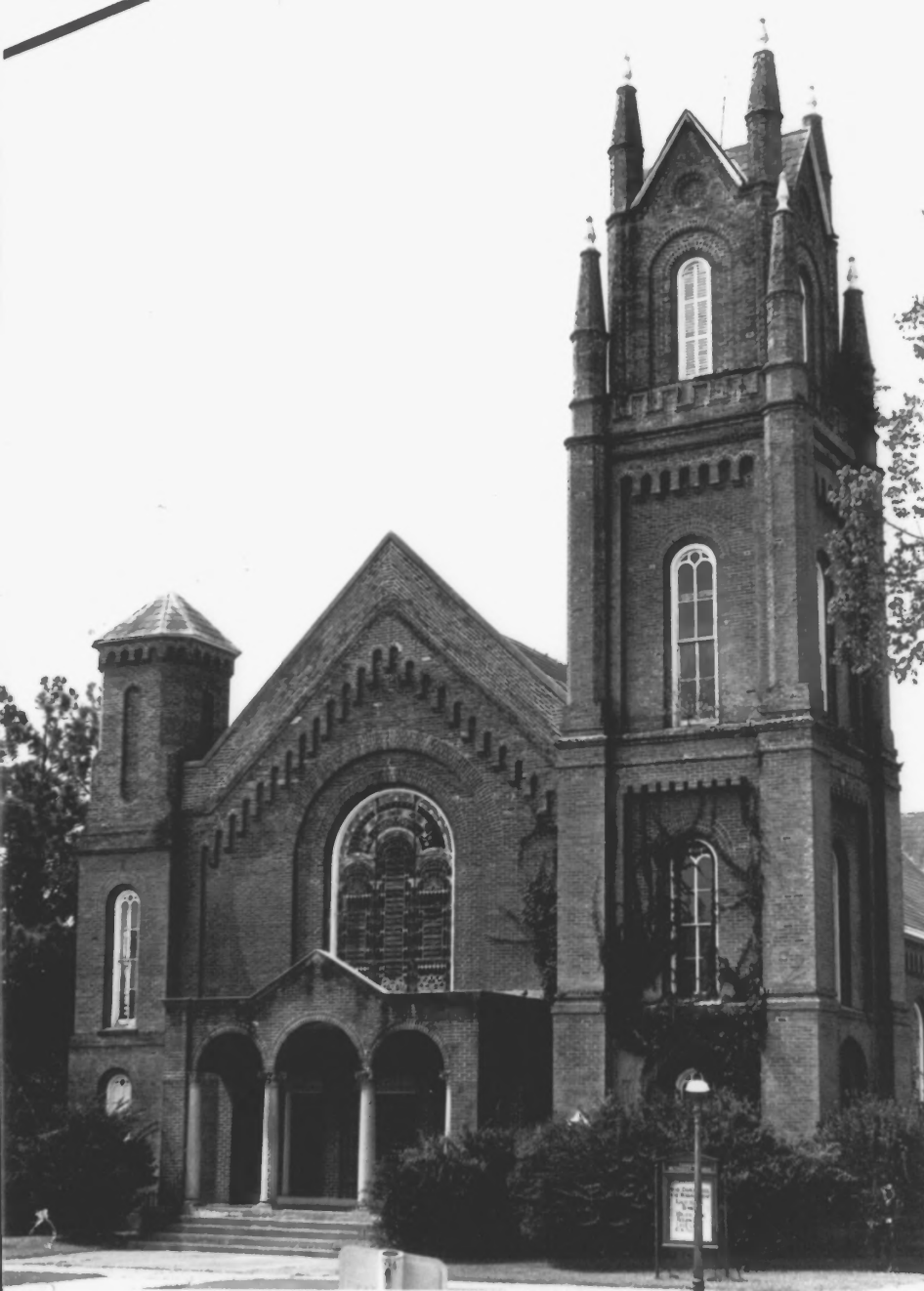
Main Street Historic District  
Tuskegee, Macon County, Alabama

Richard Dozier, 1979

Alabama Historical Commission

Lawhon House (111 S. Elm Street)  
#68

Photo number: 15/20



Main Street Historic District  
Tuskegee, Macon County, Alabama

Richard Dozier, 1979  
Alabama Historical Commission

First Methodist Church (203 S.  
Main) #110

Photo number: 16/20





Main Street Historic District  
Tuskegee, Macon County, Alabama

Richard Dozier, 1979

Alabama Historical Commission

Laslie House (501 S. Main St.)  
#157

Photo number: 17/20



Main Street Historic District  
Tuskegee, Macon County, Alabama

Richard Dozier, 1979  
Alabama Historical Commission

Walters House (303 S. Main St.)  
#132

Photo number: 18/20



Main Street Historic District  
Tuskegee, Macon County, Alabama

Richard Dozier, 1979

Alabama Historical Commission

Carr-Martin House (301 S. School  
St.) #128

Photo number: 19/20



Main Street Historic District  
Tuskegee, Macon County, Alabama

Richard Dozier, 1979

Alabama Historical Commission

Stevens-Fillingin House (109 S.  
Maple) #107

Photo number: 20/20