

United States Department of the Interior
National Park Service



76

National Register of Historic Places Registration Form

This form is for use in nominating or requesting determinations of eligibility for individual properties or districts. See instructions in *How to Complete the National Register of Historic Places Registration Form* (National Register Bulletin 16A). Complete each item by marking "x" in the appropriate box or by entering the information requested. If an item does not apply to the property being documented, enter "N/A" for "not applicable." For functions, architectural classification, materials and areas of significance, enter only categories and subcategories listed in the instructions. Place additional entries and narrative items on continuation sheets (NPS Form 10-900a). Use a typewriter, word processor, or computer, to complete all items.

1. Name of Property

historic name Camp Evans Historic District (Boundary Increase and Decrease)

other names/site number _____

2. Location

street & number 2201 Marconi Road not for publication

city or town Wall Township vicinity

state New Jersey code NJ county Monmouth code 025 zip code 07719

3. State/Federal Agency Certification

As the designated authority under the National Historic Preservation Act, as amended, I certify that this nomination request for determination of eligibility meets the documentation standards for registering properties in the National Register of Historic Places and meets the procedural and professional requirements set forth in 36 CFR Part 60. In my opinion, the property meets does not meet the National Register criteria. I recommend that this property be considered significant nationally statewide locally. See continuation sheet for additional comments.

[Signature] 4/17/11
Signature of certifying official/Title Date

State or Federal agency and bureau _____

In my opinion, the property meets does not meet the National Register criteria. See continuation sheet for additional comments.

Signature of certifying official/Title Date

State or Federal agency and bureau _____

4. National Park Service Certification

I hereby certify that this property is:

- entered in the National Register. See continuation sheet.
- determined eligible for the National Register. See continuation sheet.
- determined not eligible for the National Register.
- removed from the National Register.
- other, (explain:) _____

Signature of the Keeper

Date of Action

[Signature] 8/21/12

Name of Property

County and State

5. Classification

Ownership of Property

(Check as many boxes as apply)

- private
[X] public-local
public-State
public-Federal

Category of Property

(Check only one box)

- building(s)
[X] district
site
structure
object

Number of Resources within Property

(Do not include previously listed resources in the count.)

Table with columns: Contributing, Noncontributing, buildings, sites, structures, objects, Total. Values: 5, 1, 1, 7.

Name of related multiple property listing

(Enter "N/A" if property is not part of a multiple property listing.)

N/A

Number of contributing resources previously listed in the National Register

0

6. Function or Use

Historic Functions

(Enter categories from instructions)

DEFENSE / Military Facility
INDUSTRY / Communication Facility

Current Functions

(Enter categories from instructions)

VACANT

7. Description

Architectural Classification

(Enter categories from instructions)

Other: Military Industrial

Materials

(Enter categories from instructions)

foundation Concrete slab
walls Brick / Wood siding
roof Asphalt shingles
other

Narrative Description

(Describe the historic and current condition of the property on one or more continuation sheets.)

See Continuation Sheets.

United States Department of the Interior
National Park Service

National Register of Historic Places
Continuation Sheet

Camp Evans Historic District (Boundary Increase + Decrease)
Monmouth Co., NJ

Section number 7 Page 1

Summary paragraph

The purpose of this nomination is to both add and subtract property from the Camp Evans Historic District by adjusting the southern boundary of the district to match the boundary established in the 2002 NPS-approved Program of Preservation and Utilization Plan. This change will expand the historic district to encompass two permanent WW2 contributing buildings, a post WWII pre-fabricated storage shed and one contributing structure from the Marconi Wireless Station period of significance. However, a triangular section of the Camp Evans Historic District as listed in 2002 was removed by the above plan from the land to be transferred to Wall Township, and has been instead subsequently transferred to Brookdale Community College (212 by 255 by 300 feet, or about 0.6 acres). This area contains no historic buildings or structures, and possesses low potential to yield significant archeological remains. This nomination, once approved, will remove this triangular piece from the district. It will add the following contributing resources: the Special Antenna Shelter (Bldg. 9017), the WW2 Sheet Metal Shop (Bldg. 9013), adjacent storage shed, WW2 SCR-271 I & M School Surviving building – (Bldg. 9087), the Marconi Mast Anchor (site), and Fourth Street and portion of Fifth Street (structure). The area to be added is irregularly-shaped (see site map) but encompasses approximately 3.0 acres, leaving a net gain to the district of about 2.4 acres.

Special Antenna Shelter – 9017

This nomination proposes to list Special Antenna Shelter – 9017 on the National Register of Historic Places to enable its preservation as what may soon become the last example of a special-purpose WW2 radar development and cold war electronics building. In 1942 the U.S. Army constructed twelve Special Antenna Shelters at Camp Evans. Today eight remain at Camp Evans. Only 9017 is under the care of Wall Township and its partner InfoAge. All others, which stand outside the historic district, are expected to be demolished. The army also built similar ones at Fort Monmouth in Eatontown, NJ and Fort Hancock, Sandy Hook, NJ during WW2. All those built outside of Camp Evans have been demolished. Additional information on this unique design is found in the HABS documentation created for Building 9023 in March 2000 by Douglas C. McVarish of John Milner Associates, Inc. This description is of 9017.

This unique design building was designed for the development and production of the WW2 radar model SCR-268 (See Historic Photos 5 & 7). The design goal of the type of structure was to enable electronics testing and radar antenna testing with protection from the elements and spying. Building 9017 was modified to meet the requirements of cold war missions, most notably Project Firefinder in 1980. The main portion of the building is 45' by 45' with restrooms and utility room extending 25' on the rear. The main section is two stories in height and barn like in form built upon a concrete slab (See Photos 19 – 22). It is of wood frame construction with wood shiplap German siding (designated in Army specifications as pattern #105) with a 6-inch face. The utility room floor is four feet below grade and of concrete block construction. The original front center upper and lower double doors were replaced by a metal roll-up door. A smaller roll-up door was added on the right of the center door. The original wooden double-hung, one over one, windows on the first story were all removed on the east side. On the second floor four new vinyl clad, one over one, windows were added. A center opening has ventilation louvers. On the west side six new windows were added to the second floor. On the west first floor three of the original windows were replaced and two window opening were covered with siding. An interior and an exterior staircase allow access to the second floor. The second floor is 'U'-shaped with the opening toward the center door (See Photos 23 – 24). This enabled the vehicles with the tall artillery locating radar units to enter the building for development, just as the SCR-268 were serviced in the building during WW2. The first floor has a two-story high workspace inside the center roll up door (See photo 23). Above the workspace an I-beam was added, in the 1980s, above the second ceiling height to support an electric lift chain for heavy equipment. The I-beam runs to the east exterior wall. It is supported by vertical I-beams on either end. A dormer was added to the roof to accommodate the beam (See photo 20). To the left of the center door is a power supply room. Behind the power supply room double doors open into the back hall. The hall has a staircase to the second floor. A men's and woman's restroom are further down

United States Department of the Interior
National Park ServiceNational Register of Historic Places
Continuation SheetCamp Evans Historic District (Boundary Increase + Decrease)
Monmouth Co., NJSection number 7 Page 2

the hall past the staircase. To the right of the center door, behind the smaller front door, a platform creates a workroom (See photo 23 - 24). The top of the platform has a wooden railing. Behind the workroom is a storage room (See photo 25). On the second floor, two offices are to the left of the center workspace. The office to the rear has a door opening into the open workspace. There is no protection from a fall to the floor of the workspace. The rear office has a door into the rear upstairs hallway (See photo 26). Off the hallway is a restroom, the stairway and a rear corner office. The office has an emergency exit door to a wooded exterior stairway to the ground (See photo 20).

WW2 Sheet Metal Shop – 9013

Constructed in 1942, the Sheet Metal Shop is an industrial, rectangular structure with 6" concrete slab floor, brick load-bearing walls and wood trusses supporting an asphalt shingle gable roof. It is one story in height (See Photos 11 – 14). The original building was 60' by 60'. An addition was added across the rear after 1945 measuring 60' by 25'. This makes the current building 85' by 60'. The shingle roof of the addition slopes perpendicular to gable roof (See Photo 13). The addition added a person door and an overhead door toward the north and a new rear exit door. The front has two large overhead doors, three windows and two person doors. One door opens into the shop floor, the other a small office. The south side has nine windows, the rear has five windows and one person-door, on the north six windows, two person doors and an overhead door added with the addition. All metal frame windows have six panes and concrete sills. The lower three panes tilt in. Connected to the building by a 1-foot diameter conduit and ten foot away on the north is the 12' by 20' masonry boiler building (See photo 13). The boiler room floor is five foot below grade with internal stairs from the front door.

The interior of the 9013 has a large 15' tall 50' by 40' shop space with two large overhead doors on the front (See Photo 15 - 16). On the north end of the shop there is an office, two work rooms, a men's rest room and stairs to a part loft above them (See Photo 17). Behind the tall end of the shop is 20' more of shop area with a 10' ceil height (See photo 18). The two large doors in former exterior wall allow entrance to the 25' by 60' addition. A large overhead door on the north face allow vehicles into the addition (See photo 13). Around the perimeter are radiators for heat under most of the windows.

Storage Shed – 9099

On the west side of 9013, a prefabricated 20' x 20' galvanized metal storage building on a concrete pad was added sometime after WWII. It has an angle iron metal frame with a gable roof. The front has a double metal clad door. On each side of the door are two metal frame windows with 6-panel of glass. The windows are hung on hinges on the top of their frame. The other three sides have three of the same 6-panel windows on each side. The interior is filled with racks to hold metal sheets and metal stock used in the sheet metal shop (9013) next to it.

Dymaxion Deployment Unit (DDU) - adjacent to 9013 (now inside of expanded district).

On the south side of 9013 are a DDU and an empty DDU concrete pad. These were outside the original 2002 historic district. With the expansion of the district, these can be counted as contributing resources. The DDUs were designed by American Engineer Richard Buckminster Fuller. The units were produced by the Butler Manufacturing Company. They are prefabricated corrugated circular metal buildings (18 foot diameter). Designed to provide storage and shelter space, they used a minimum of building materials, and could be assembled by two people in a few hours. Each unit featured round porthole windows, and was topped by a round ventilation hatch with a pop-up cover. The original DDU plans are on file in the Fuller archives at Stanford University. After an initial refusal, in 2009 we convinced the archives to allow us to fund a conservation specialist to scan the plans before they deteriorated any further and the information they contained was lost. This DDU was proposed to be moved and relocated into the 2002 district boundary. With the

United States Department of the Interior
National Park Service

National Register of Historic Places
Continuation Sheet

Camp Evans Historic District (Boundary Increase + Decrease)
Monmouth Co., NJ

Section number 7 Page 3

district expansion and a pending conservation agreement with Brookdale Community College, relocation is no longer required for the preservation of this unique special purpose structure.

WW2 SCR-271 I & M School Surviving building – 9087

Building 9087 was part of a complex of two SCR-271 radar antennas and three supporting buildings. Building 9087 is the only survivor (See Historic Photos Pages 38 and 42). The other buildings were temporary wood construction and were demolished after WW2. The only vestiges the 100' tall SCR-271-A radar antenna and the 150' tall SCR-271-D radar antenna are the four concrete footings with steel bolts torched off even with the grade (See Photos 8 - 10). Building 9087 is 20' by 30'. It is constructed of concrete block (See Photos 5 - 6). A rest room protrudes from the rear. It has a gable roof covered with asphalt shingles. The roof shingles were recently replaced to save the structure. The building was repainted to match its WW2 camouflage scheme. The only entrance is a double door on the south side. The main interior is a single room with six windows and a single door to the restroom extension (See Photo 7).

Marconi Mast Anchor

The Marconi Mast anchor, located at the intersection of Monmouth Blvd. And Watson Road (See Photos 1 – 2) is a rectangular 12' by 8' concrete mass, four feet above the ground with four steel connection points protruding at a 45-degree angle. Constructed in 1912-1913 as one of a set of four anchors which supported each 400' steel wireless mast. Thick steel guy cables manufactured by the Roebling Wire Company were attached to the steel wireless masts and attached to steel flanges (See photo 3) protruding from the anchors. The guy wires gave support against wind stresses on the masts. Each anchor was 198' from the mast. There were six masts and 24 anchors. The masts were dropped in 1926. This is the only remaining anchor on the Camp Evans property. It is in good condition. Advances in wireless technology would lead to the development of radio, then radar. Just 29 years later, in the shadow of where the 1913 wireless mast system once stood, two SCR-271 radar towers and their support buildings would be constructed. Today only building 9087 and one Marconi concrete anchor remain (See photo 4).

Fourth Street and portion of Fifth Street

Fourth Street is an asphalt road 30 feet wide. It begins at Gate 2 on Monmouth Boulevard. Heading east for 140 feet (See Photo 27), it intersects Avenue 'A'. About 50 feet southward on Avenue 'A' Fourth Street continues along the grass median on the south side of building 9037 for 412 feet (See Photos 28 – 29). It then bends southward as it approaches 9017. It intersects and ends at Fifth Street south west of 9017 (See Photo 30). The street has no curbing. The portion of Fifth Street in the historic district runs for 135 feet from the intersection with Fourth Street to Avenue 'B' (See Photos 31–32).

8 Statement of Significance

Applicable National Register Criteria

(Mark "x" in one or more boxes for the criteria qualifying the property for National Register listing.)

- A Property is associated with events that have made a significant contribution to the broad patterns of our history.
- B Property is associated with the lives of persons significant in our past.
- C Property embodies the distinctive characteristics of a type, period or method of construction or represents the work of a master, or possesses high artistic values, or represents a significant and distinguishable entity whose components lack individual distinction.
- D Property has yielded, or is likely to yield, information important in prehistory or history.

Criteria considerations

(mark "x" in all the boxes that apply.)

Property is:

- A owned by a religious institution or used for religious purposes.
- B removed from its original location.
- C a birthplace or grave.
- D a cemetery.
- E a reconstructed building, object or structure.
- F a commemorative property.
- G less than 50 years of age or achieved significance within the past 50 years.

Areas of Significance

(Enter categories from instructions)

- Military
- Communications
- Engineering
- _____
- _____
- _____

Period of Significance

1912-1975

Significant Dates

1914 (Edwin Armstrong Regenerative Circuit Test)
1941-1945 (WW2 Radar development)

Significant Person

(Complete if Criterion B is marked above)

Cultural Affiliation

N/A

Architect/Builder

J.G. White Engineering Co. (Marconi Mast System)
John T. Rowland (architect, Special Antenna Shelter [9017])

Narrative Statement of Significance

(Explain the significance of the property on one or more continuation sheets.)

9. Major Bibliographical References

Bibliography

(cite the books, articles, and other sources used in preparing this form on one or more continuation sheets.)

Previous documentation on file (NPS):

- preliminary determination of individual listing (36 CFR 67) has been requested
- previously listed in the National Register
- previously determined eligible by the National Register
- designated a National Historic Landmark
- recorded by Historic American Buildings Survey # _____
- recorded by Historic American Engineering Record # _____

Primary location of additional data

- State Historic Preservation Office
- Other State agency
- Federal agency
- Local government
- University
- Other

Name of repository:

InfoAge Science-History Center archive

United States Department of the Interior
National Park Service
National Register of Historic Places
Continuation Sheet

Camp Evans Historic District – (Boundary Increase +decrease)
Monmouth Co., NJ

Section number 8 Page 1

Summary paragraph

The value and importance of radar to the WW2 Allied victory was evident from the earliest days of the war and during the Battle of Britain. Fifty minutes before the first bombs were dropped on Pearl Harbor, the Japanese planes were detected by Army radar. Radar saw action in every theater of battle including the oceans. The U.S. provided radar equipment and training to all our Allies, including the Soviets. Camp Evans was the premier radar laboratory, directing and employing the expertise of academic and industrial laboratories throughout the nation. Camp Evans staff created and tested prototype equipment models. Once perfected, the staff created production engineering drawings for the equipment to be produced by U.S. industry in secret. Camp Evans was the home of the Joint Army–Navy tube standardization group. The Army's first radar countermeasures efforts began at Camp Evans. Camp Evans Monthly Progress Reports on file at NARA list dozens of radar projects underway. In the history of radar in WW2, Camp Evans is a special and a unique place. The resources being added to the district reflect these activities. (The National Historic Landmarks WWII and the Home Front Theme Study completed in November 2008 recognizes the radar laboratory's contribution to the war and recommends that Camp Evans be considered for NHL designation.)

Radar development at Camp Evans

On the day WW2 ended many national papers carried stories disclosing the story of radar to the general public. As an example, a full-page story in the N.Y. *Daily News* reported that an Army spokesman stated: "In the technical field, where so much of this war has been fought, the failure of the Nazis and the Japs to keep pace with Allied radar has been probably the major single reason for defeat." (The NY *Daily News*, Aug. 15, 1945, Page 7). One of the photos accompanying the article shows a SCR-268 radar unit. The caption reads: "Radar equipment at Camp Evans". Another photo caption in the article reads: "Dr. A. Hoyt Taylor and Leo Young, two of the pioneers in the field of radar". These Naval Radio Laboratory (NRL) researchers worked at Camp Evans during the United States involvement in WW1. After WW2, selected German radar experts were brought to Camp Evans under the Operation Paperclip program.

Special Antenna Shelter – 9017, potentially the last of its type.

Building 9017 is exemplifies the architecturally distinctive custom-designed type of WW2 radar structures developed and built at Camp Evans. This type of building was designed by well-known Jersey City, NJ architect John T. Rowland for the development and production of the radar model SCR-268 and SCR-270 mobile radars. The mounted SCR-268 and SCR-270 radar units were so tall they did not allow room for interior roof supports (Historic Photos 3 – 4). The design goal of the type of structure was to enable electronics testing and radar antenna testing with protection from the elements and spying. These buildings were augmented by wooden flying buttresses (See Historic Photos 5 - 9). The same design was used at Fort Hancock, Fort Monmouth and Camp Evans. These unusual buildings were placed around Evans to minimize the impact of potential enemy bombing or sabotage. Later it was realized they were aligned perfectly for WWII aircraft bombing runs (Zahl 1970b). Nine of the original twelve at Camp Evans remain, all others are gone. Only building 9023 has the buttresses remaining. At the request of NJSHPO HABS Documentation was created for Building 9023 in March 2000 by Douglas C. McVarish of John Milner Associates, Inc. Only 9017, is to be preserved.

Early in the war these buildings served as shelters for work on the radars. Later in the war as more radar fabrication was contracted to firms like Westinghouse and Western Electric, the Special Antenna Shelters were used for other needs. Building 9019, for example came to be used for production drafting. Evans employee George L. Brown created classified drawings of radar components, often behind security screens. Mr. Brown once reported to his superiors that his classified drawings were being moved during off hours and he later found communist propaganda in his desk (G. Brown personal communication, July 27, 1999). In this same building (9019) John Marchetti, twenty men and a secretary once worked 96 continuous hours assembling mortar location radar sets for use in Pacific island landings to meet the critical operational need as requested by General MacArthur (Zahl 1968, Pg. 76 & Popular Electronics 1964, Pg. 57). In 1943, mortar protection was so desperately needed in the war zone that the first units built in the Camp Evans development

United States Department of the Interior
National Park ServiceNational Register of Historic Places
Continuation SheetCamp Evans Historic District – (Boundary Increase +decrease)
Monmouth Co., NJSection number 8 Page 2

laboratory were flown directly into battle. Evans would be the home of this special type of radar for over fifty years. In the 1950s building 9045 housed a development group working on spacecraft power systems development. They would develop the prototype of a nuclear isotope based spacecraft power system used to generate electric power for deep space probes. Isotope contamination of the building would lead to its remediation and removal. During the Strategic Defense Initiative (aka Star Wars) building 9049 would house the Pulse Power project. Its goal was to create a power pulse strong enough to disrupt the electronics in an orbiting Soviet satellite. PCB contamination would result in the removal of this building and many tons of nearby soil. Building 9020 was used for cryptography during the cold war. Most of the classified missions in the various special antenna shelters over the years will remain unknown.

After WW2 building 9017 was used for the analysis of captured German Radar equipment (Historic Photos 8 - 9). Later this equipment was modified for use as satellite tracking radar. The unit was deployed upon a custom steel platform at the Project Diana site. It had a new 50-Foot antenna to support the Army space program. In the 1980s, 9017 was modified to meet the requirements of cold war missions, most notably Project Firefinder. This advanced radar and computer integrated system was designed to enable U.S. Army artillery to send counterfire against enemy artillery batteries. The system was designed with the Soviet Union as the potential adversary. It saw its first combat use in the first Gulf War. It had a devastating effect upon Iraqi forces as it directed counter fire upon any enemy artillery that fired upon units equipped with the FireFinder system.

WW2 Sheet Metal Shop – 9013

Constructed in 1942, the Sheet Metal Shop was an integral unit of the Camp Evans mission to meet a military electronics needs from concept to combat (Historic Photos 5 – 7). The shop fabricated, in secret, the sheet metal parts of any prototype radio, radar, IFF, beacons, etc. designed by the Camp Evans engineers. The prototypes were tested for combat readiness. Once a design passed all tests, the production engineering draftsman would create the drawings for American industry to manufacture. The shop saw continuous use through the Korean war, Vietnam conflict and entire cold war. One specific project during the Vietnam conflict was the construction of special giant photo flash units to take lighted night photos over Vietnam. The building served as a sheet metal shop until the closure of the base.

WW2 SCR-271 I & M School Surviving building – 9087

The only vestiges of the four buildings and two radar towers of the WW2 SCR-271 Installation and Maintenance School is 9087 and the concrete bases of the 100' tall SCR-271-A radar antenna and the 150' tall SCR-271-D radar antenna (See Historic Photos 10 - 12). The other buildings were of temporary wood construction and were demolished after WW2. The complex was used to train radar and radar antenna technicians to erect and maintain these critical early warning radar models. A classified radar antenna manual published in 1942 contains instructions and photos on how to erect the early radar giant SCR-270 antenna and how to install the IFF antenna (See Historic Photo Page 10). Once trained these teams installed and maintained these same models from Maine to Mexico and from Alaska to Mexico, to protect the United States from a surprise enemy attack. Units were also erected on both ends of the Panama Canal. These radar models provided the only warning of enemy attack early in the war. Later as shorter range but more accurate microwave radar units were developed, these models still provided the early warning and the new units provided fire control information. This site testifies to the rapid mobilization and work done on the home front to enable the United States Armed Force to protect its shores and citizens.

Marconi Mast Anchor – Corner of Monmouth Bl. & Watson Rd.

After the sinking of the Titanic and the resulting passage of the Radio Act of 1912 by the U.S. Congress, the fortunes of the Marconi Companies soared. Marconi now had the funds to realize his vision of a "Wireless Girdle Around the Earth". This mast anchor was a part of the Belmar Station in the key link from United States to Europe.

United States Department of the Interior
National Park Service**National Register of Historic Places
Continuation Sheet**Camp Evans Historic District – (Boundary Increase +decrease)
Monmouth Co., NJSection number 8 Page 3

Located at the intersection of Monmouth Bl. and Watson Road is the last Marconi Mast anchor on the Camp Evans site. This anchor was constructed in 1912-1913 as one of a set of four anchors for the mast base which supported the second mast of the line of six 400' tall steel wireless masts (See Historic Photo 1). The massive anchor was made of Portland Cement. Thick steel guy cables manufactured by the Roebling Wire Company of Trenton, NJ attached the steel wireless masts to the anchors for support against wind stresses on the masts (See Historic Photo 2). Each anchor was 198' from the mast.

The anchor was an integral part of the wireless mast system which Edwin Armstrong used to demonstrate his first major invention, the regenerative circuit, to David Sarnoff in January of 1914. Sarnoff worked for Marconi and Armstrong was attempting to interest the Marconi Corporation to license his patented invention. This celebrated historic technological event marked the beginning of world-wide wireless communication.

During WWI the station was seized and operated by the U.S. Navy under the war-powers authority in the Radio Act of 1912. Upon America's entry into the Great War, Dr. A. Hoyt Taylor was named Trans-Atlantic communications officer. He was ordered by the Navy to assemble a team of radio experts to make sure wireless message traffic to and from Europe was not interrupted. The use of the station to receive wireless messages from the American Expeditionary Forces in Europe was so critical that the masts were under guard by a group of 100 U.S. Marines assigned to protect them from enemy sabotage. Well known wireless experts would carry on research at the station. Examples are Roy Weagant, Ernst Alexanderson and Harold Beverage.

During the war when local farmers saw persons climbing the masts without the Marine guards present they grabbed guns and pitch forks and surrounded the mast base waiting for the suspected German saboteurs. Renowned antenna expert, Harold Beverage, and fellow staff had to convince the farmers they were station staff and not saboteurs (Personal communication by John Etter – 2002).

Many of the most important messages of the Great War were received on this system of masts (Asbury Park Press, 12/12/1949). Once disclosed after the war, the static elimination advances made at the station by Roy Weagant were hailed as the most important technology advance of the decade (Nally Papers, Princeton University Library Special Collections). The advance rendered the giant mast systems obsolete. The team Dr. Taylor assembled would form the heart of the Naval Radio Laboratory formed in 1922. They would develop radar for the Navy prior to the start of WW2.

The first transmission of the Armistice terms from Europe was received on these masts and forwarded to President Wilson beginning the negotiations that ended the war. Published articles after the war credited the use of wireless for shortening the war and saving thousands of lives on both sides. The masts were dropped in 1926. Five of the six mast bases and the sets of four anchors around each mast would gradually be demolished to make way for buildings, a large parking lot and private homes.

United States Department of the Interior
National Park Service

National Register of Historic Places Continuation Sheet

Camp Evans Historic District – (Boundary Increase and Decrease)
Monmouth Co., NJ

Section number 9 Page 1

[there are no additions to the bibliography contained in the Camp Evans Historic District nomination.]

United States Department of the Interior
National Park Service

National Register of Historic Places Continuation Sheet

Camp Evans Historic District – (Boundary Increase and Decrease)
Monmouth Co., NJ

Section number 10 Page 1

Verbal Boundary Description

As shown on the accompanying site plan, this nomination *adds* the following property to the district:

Beginning at the south end of gate 2 and thence running

- (1) north along security fence 100 feet to a point,
- (2) turning right proceed on a line (S 23° 33' 38" E) along the north edge of Fourth Street for 887 feet to a point.
- (3) turn right toward the intersection of the east edge of Avenue 'B' and the south edge of Fifth Street for 100 feet,
- (4) follow along the south edge of Fifth Street, in-front of Bldg. 9017, to the intersection of Fourth Street and Fifth Street,
- (5), turn right 90 degrees to follow Fourth Street along its south edge to the intersection of Fourth Street and Avenue "A",
- (6) follow the east edge of Avenue "A" for 100 feet, to a point,
- (7) turn 90 degrees west, to the west edge of Monmouth Boulevard,
- (8), follow Monmouth Boulevard for 200 feet to the north edge of the large Camp Evans parking lot
- (9) follow the north edge of the parking lot for 200 feet to a point,
- (10), turn 90 degrees and follow a line to the north side of Watson Road,
- (11), turn 90 degrees, follow north side of Watson Road, continue straight across Monmouth Boulevard to south side of Gate 2 on Monmouth Boulevard to the Point of Beginning, containing approximately 3.0 acres.

This nomination also *subtracts* the following triangular parcel from the district:

Beginning at a point of the triangular parcel that coincides with the end of the second course of the addition noted above, thence running

- (1) North 81 degrees 56 minutes West approximately 210 feet to a point along the Camp Evans perimeter fence at a corner of two abutting house lots known as Lots 5 and 6 of Block 240 of the Wall Township tax map; thence
- (2) following the fence North 21 degrees and 27 minutes East approximately 250 feet to a point on the perimeter fence in range with the northerly end of the house on lot 8 of Block 240; thence
- (3) extending South 23 degrees and 33 feet East approximately 320 feet to the Point of Beginning, containing approximately 0.6 acres.

Boundary Justification Statement

Expansion of the Camp Evans Historic District would afford protection to three significant resources and give them a level of protection from demolition. In the 1996 HABS/HAER survey of the entire Evans Area two Buildings were incorrectly identified as constructed post WW2 and a 1913 Marconi High-Powered Wireless Station significant resource was overlooked. These resources were not included in the original district nomination. A classified 1942 WW2 radar antenna technical manual located in 2005 gave photographic evidence that the two permanent structures, 9013 and 9087 were actually significant WW2 resources. The photographs also led to discovery of the remains of bases of two WW2 radar antenna towers.

Building 9013 in the area of boundary increase was a sheet metal shop during WW2 and afterward. This building is in good condition and will enhance the preservation of the WW2 appearance of the historic district. In order to save Bldg. 9017, as well as allow better circulation within the back parts of the district, including improved service vehicle access and fire protection to the historic buildings, the district boundary should be adjusted as described above to include the above-described buildings and structures, as well as the adjacent road and a rear entrance (Gate Two). This land, the road and 9017 was added to the 2002 NPS approved Program of Preservation and Utilization Plan filed by InfoAge on behalf of Wall Township.

The triangle piece of land to be removed from the district contains no buildings, structures or landmarks other than a portion of the perimeter fence.

Name of Property

County and State

10. Geographical DataAcreage of property Net increase about 2.4 acres**UTM References**

(Place additional UTM references on a continuation sheet.)

1 18 579830 4448725
Zone Easting Northing3
Zone Easting Northing

2

4

 See continuation sheet**Verbal Boundary Description**

(Describe the boundaries of the property on a continuation sheet.)

Boundary Justification

(Explain why the boundaries were selected on a continuation sheet.)

11. Form Prepared Byname/title Fred Carl – Wall Township Historian and InfoAge Director
organization InfoAge Science History Center date Rev'sd. Nov.2011, June 2012
street & number 2201 Marconi Road telephone 732 299-0894
city or town Wall Township state New Jersey zip code 07719**Additional Documentation**

Submit the following items with the completed form:

Continuation Sheets**Maps**A **USGS map** (7.5 or 15 minute series) indicating the property's location.A **Sketch map** for historic districts and properties having large acreage or numerous resources.**Photographs**Representative **black and white photographs** of the property.**Additional items**

(Check with the SHPO or FPO for any additional items)

Property Owner

(Complete this item at the request of the SHPO or FPO.)

name Wall Township (See Continuation Sheet)
street & number 2700 Allaire Road telephone 732 449-8444
city or town Wall Township state New Jersey zip code 07719**Paperwork Reduction Act Statement:** This information is being collected for applications to the National Register of Historic Places to nominate properties for listing or determine eligibility for listing, to list properties and to amend existing listings. Response to this request is required to obtain a benefit in accordance with the National Historic Preservation Act, as amended (16 U.S.C.470 *et seq.*)**Estimated Burden Statement:** Public reporting burden for this form is estimated to average 18.1 hours per response including time for reviewing instructions, gathering and maintaining data and completing and reviewing the form. Direct comments regarding this burden estimate or any aspect of this form to the Chief, Administrative Services Division, National Park Service, P.O. Box 37127, Washington, DC 20013-7127; and the Office of Management and Budget, Paperwork Reductions Projects (1024-0018), Washington, DC 20503.

National Register of Historic Places

Continuation Sheet

Camp Evans Historic District – (Boundary Increase and Decrease)
Monmouth Co., NJSection number Photos Page 1

Photographs

Digital images on file at InfoAge Science History Center, 2201 Marconi Road, Wall, NJ 07719

Photos by: Evan Thomson or ** Fred Carl

Photo 1 - Marconi Mast Anchor – 2008 - A front view of the surviving Marconi Wireless Mast Concrete Guy Wire Anchor at corner of Watson Road and Monmouth Boulevard.

Photo 2 - Marconi Mast Anchor – 2008 - A rear view of the surviving Marconi Wireless Mast Concrete Guy Wire Anchor

Photo 3 - Marconi Mast Anchor – 2008 - A close up view of the Marconi Wireless Mast Concrete Anchor Guy Wire connectors

Photo 4 - Marconi Mast Anchor – 2008** - A view of the surviving Marconi Wireless Mast Concrete Guy Wire Anchor from across Monmouth Bl. Looking through Gate 2. Note WW2 era Building 9087 to the left.

Photo 5 - Building 9087 – 2008 - An east view of the WW2 Radar Installation and Maintenance School surviving building. Note new roof.

Photo 6 - Building 9087 – 2007 - A west view of the WW2 Radar Installation and Maintenance School surviving building. Note restroom extension. The brick building to right is the WW2 sheet metal shop.

Photo 7 - Building 9087 interior – 2008 - An interior view of the WW2 Radar Installation and Maintenance School surviving building.

Photo 8 - Concrete bases – artifacts of the WW2 SCR-271-A radar Antenna adjacent to Building 9087 – 2008 - A northward view of the WW2 Radar Installation and Maintenance School. Note corner of Building 9087 on right.

Photo 9 - Concrete bases – artifacts of the WW2 SCR-271-D radar Antenna adjacent to Building 9087 – 2008 - An eastward view of the WW2 Radar Installation and Maintenance School.

Photo 10 - Concrete bases – artifacts of the WW2 SCR-271-D radar Antenna adjacent to Building 9087 – 2008 - A Close up view of one of the eight artifacts of the WW2 SCR-271 model A & D antennas. Note cut off bolts.

Photo 11 - Building 9013 – WW2 Sheet Metal Shop – 2008 - An east view of the WW2 Sheet Metal Shop showing front elevations. Note DDU to left.

Photo 12 - Building 9013 – WW2 Sheet Metal Shop – 2008 - A southwest view of the WW2 Sheet Metal Shop showing front and north elevations. Note boiler extension to left.

Photo 13 - Building 9013 – WW2 Sheet Metal Shop – 2008 - A south view of the WW2 Sheet Metal Shop showing north and rear elevations. Note post WW2 addition on rear.

Photo 14 - Building 9013 – WW2 Sheet Metal Shop – 2008 - A northeast view of the WW2 Sheet Metal Shop showing the rear elevation and the post WW2 addition.

Photo 15 - Building 9013 – WW2 Sheet Metal Shop interior – 2008 - A front interior view of the WW2 Sheet Metal Shop main shop room. Note height of ceiling.

National Register of Historic Places

Continuation Sheet

Camp Evans Historic District – (Boundary Increase and Decrease)
Monmouth Co., NJ

Section number Photos Page 2

Photo 16 - 9013 – WW2 Sheet Metal Shop interior – 2008 - A rearward interior view of the WW2 Sheet Metal Shop main shop room. Note height of ceiling, the drop with a loft above and the two former rear doors which now open into an addition.

Photo 17 - Building 9013 – WW2 Sheet Metal Shop interior – 2008** - A northeast interior view of the WW2 Sheet Metal Shop main shop room. Note workroom door on left and office door on right.

Photo 18 - Building 9013 – WW2 Sheet Metal Shop interior – 2008 - A north interior view of the WW2 Sheet Metal Shop addition room. Note stairs on right to parts lofts. Wall to left of stairs is the original exterior wall.

Photo 19 - Building 9017 – WW2 Special Antenna Shelter– 2008 - A northeast view of the WW2 SCR-268 radar shelter showing front and west elevations.

Photo 20 - Building 9017 – WW2 Special Antenna Shelter – 2008 - A north view of the WW2 SCR-268 radar shelter showing front and east elevations. Note post WWII dormer on roof for equipment crane girders. To the right there are exterior stairs to second floor.

Photo 21 - Building 9017 – WW2 Special Antenna Shelter – 2008** - A south view of the WW2 SCR-268 radar shelter showing rear elevation. Note boiler room and restroom extension.

Photo 22 - Building 9017 – WW2 Special Antenna Shelter – 2008** - An east view of the WW2 SCR-268 radar shelter showing west elevation. Note damage from vandalism.

Photo 23 - Building 9017 – WW2 Special Antenna Shelter interior– 2008 - A south view of the interior showing front roll up door. Center area is a two story open area.

Photo 24 - Building 9017 – WW2 Special Antenna Shelter– 2008 - A south view of the second floor platform and building ceiling.

Photo 25 - Building 9017 – WW2 Special Antenna Shelter interior– 2008 - A southwest view of the interior showing first floor front rooms to right of center roll up door.

Photo 26 - Building 9017 – WW2 Special Antenna Shelter– 2008** - A southwest view of the second floor front office rooms to right of center roll up door.

Photo 27 -Fourth Street & Avenue 'A' - A westward view of Gate 2 with Avenue 'A' in the foreground and Fourth Street 9013 to the left and Marconi era concrete mast anchor seen thru gate.

Photo 28 - Avenue 'A' looking eastward along Fourth Street - A view of Fourth Street with 'H' Building 9037 to the left and 9017 in the distance.

Photo 29 - Fourth Street - A westward view of Fourth Street with 9037 to the right and 9013 and a DDU in the distance.

Photo 30 - Fourth Street - A north view of the intersection of Fourth and Fifth Street. Fourth Street bends to the left at 9037.

Photo 31 - Fifth Street intersecting with Avenue 'B'** – A northwest view of the intersection of Fifth Street and Avenue 'B' with 9017 in view.

United States Department of the Interior
National Park Service

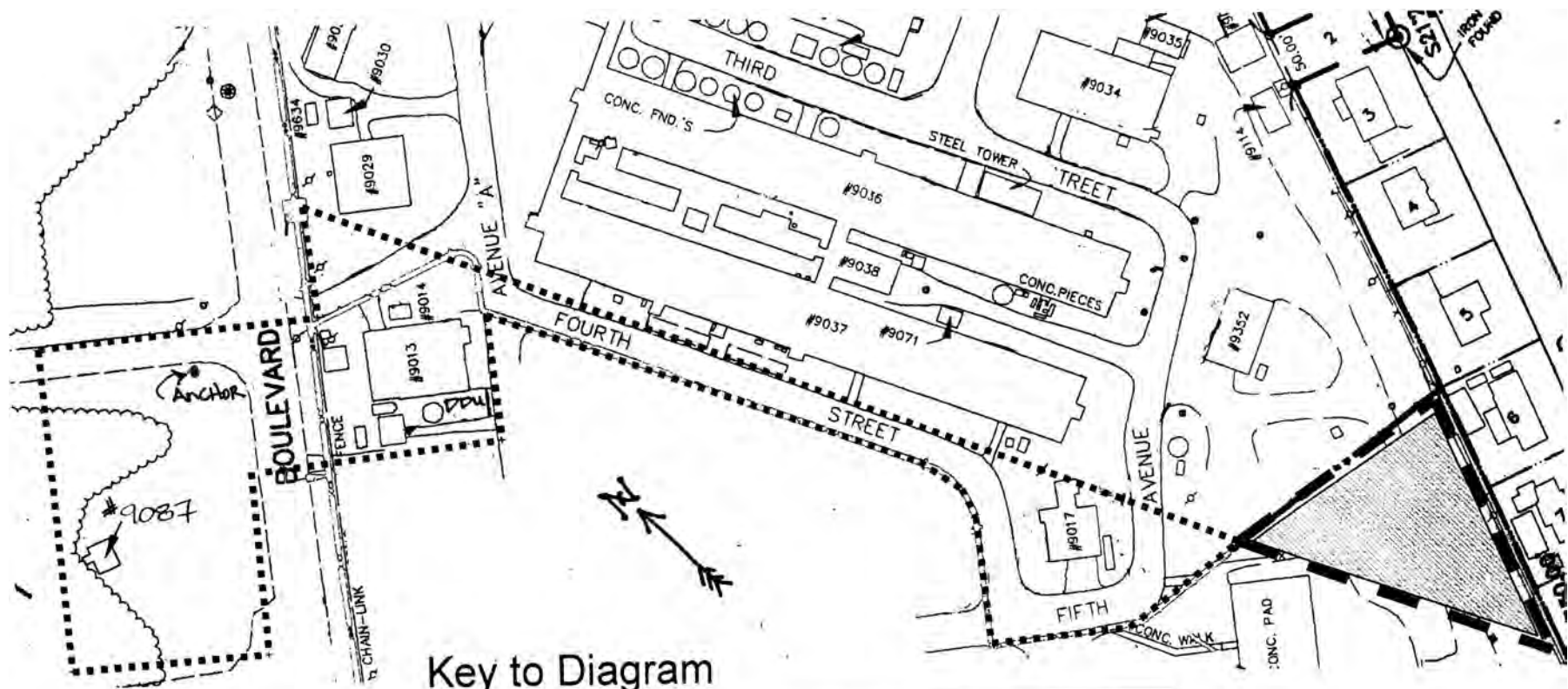
National Register of Historic Places Continuation Sheet

Camp Evans Historic District – (Boundary Increase and Decrease)
Monmouth Co., NJ

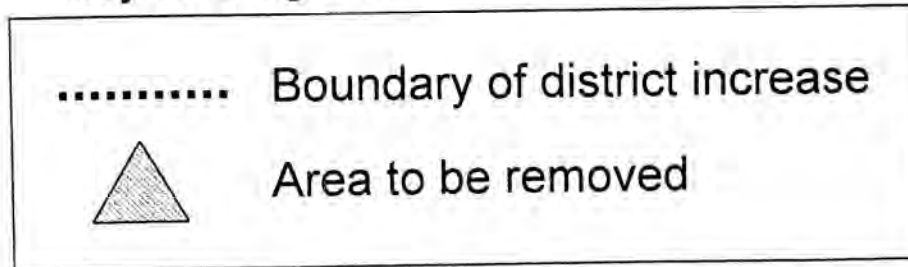
Section number Photos Page 3

Photo 32 - view northward of Avenue 'B'** – A north view of the intersection of Fifth Street and Avenue 'B'. Note 9017 to the left.

Camp Evans Historic District (Boundary Increase) Area to be added and removed



Key to Diagram



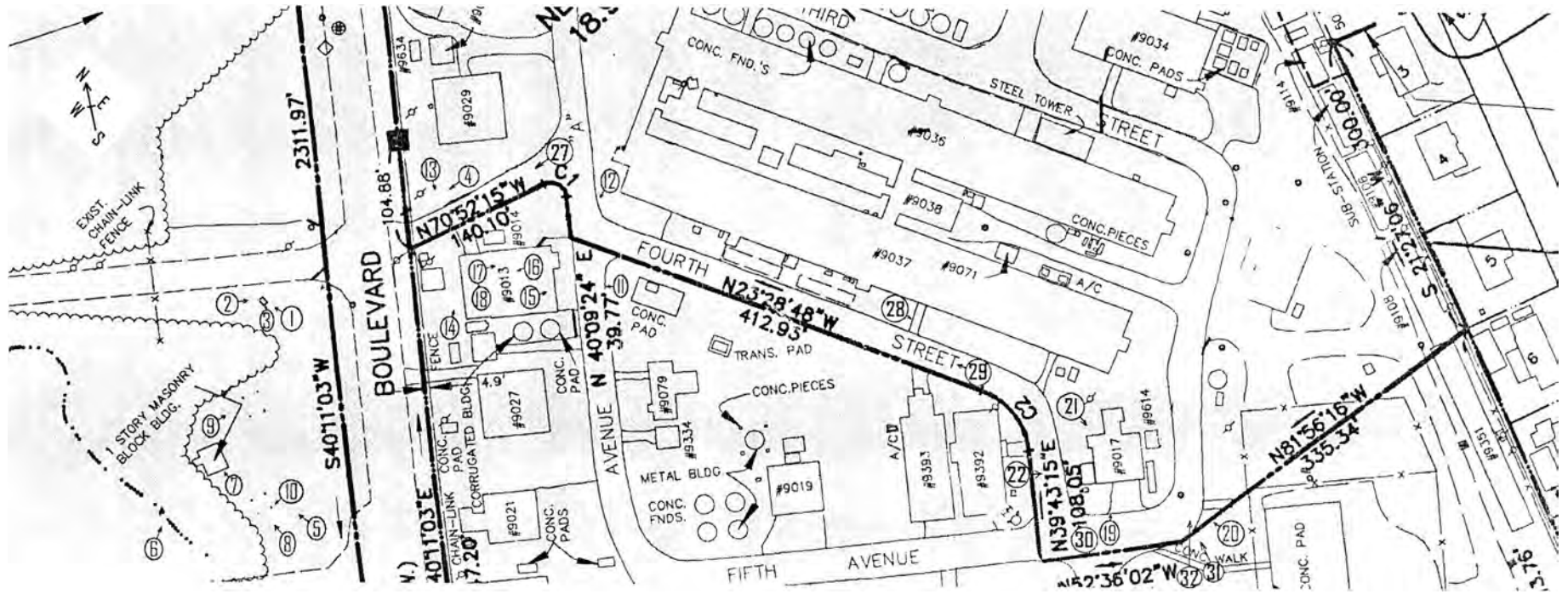
NJ/National Registers of Historic Places

Camp Evans Historic District
(Boundary Increase and Decrease)

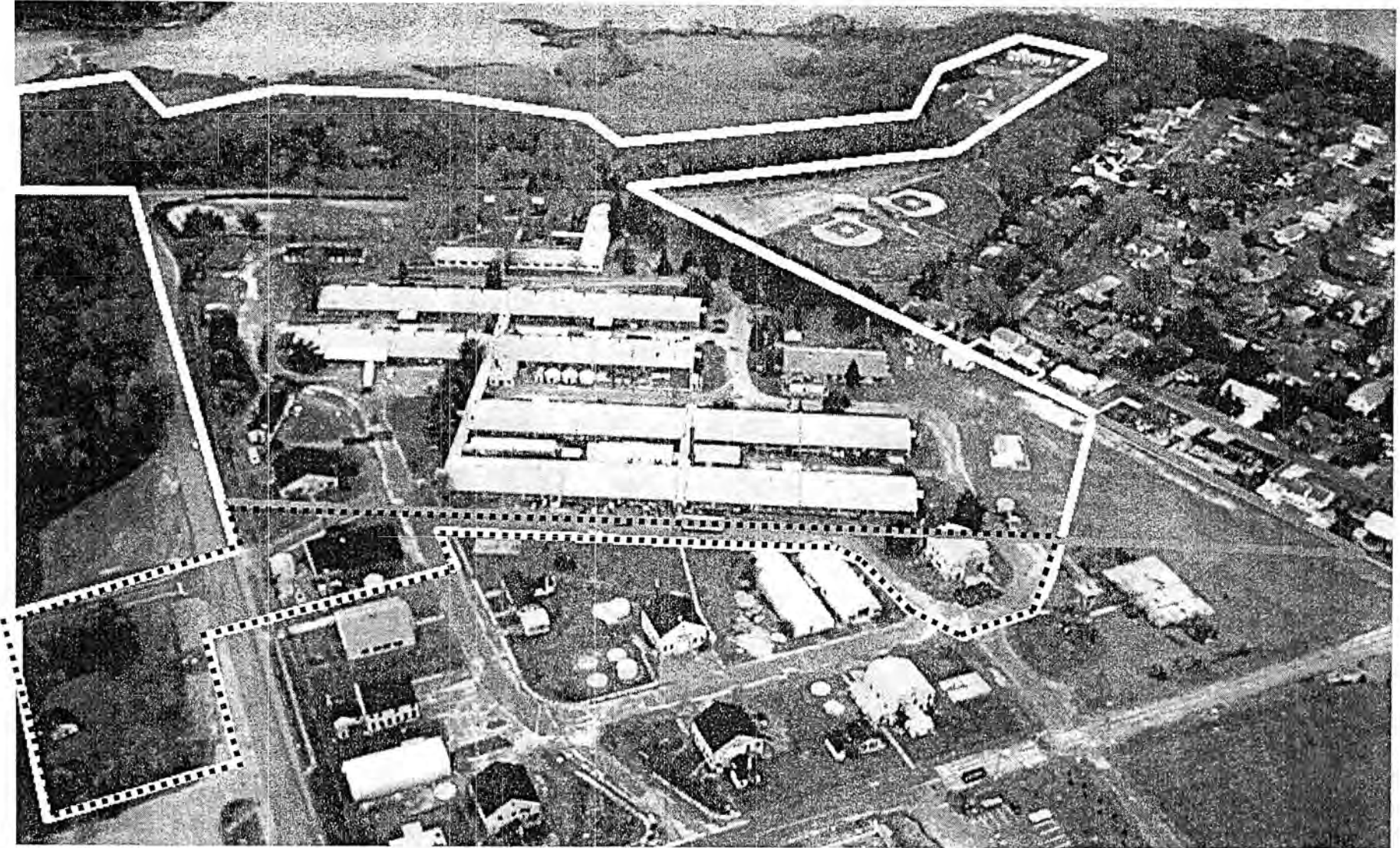
Site Map

Wall Twp. Monmouth Co. NJ

New Jersey, Monmouth County, Camp Evans Historic District - Photo locator



View of Camp Evans Historic District and Boundary Increase



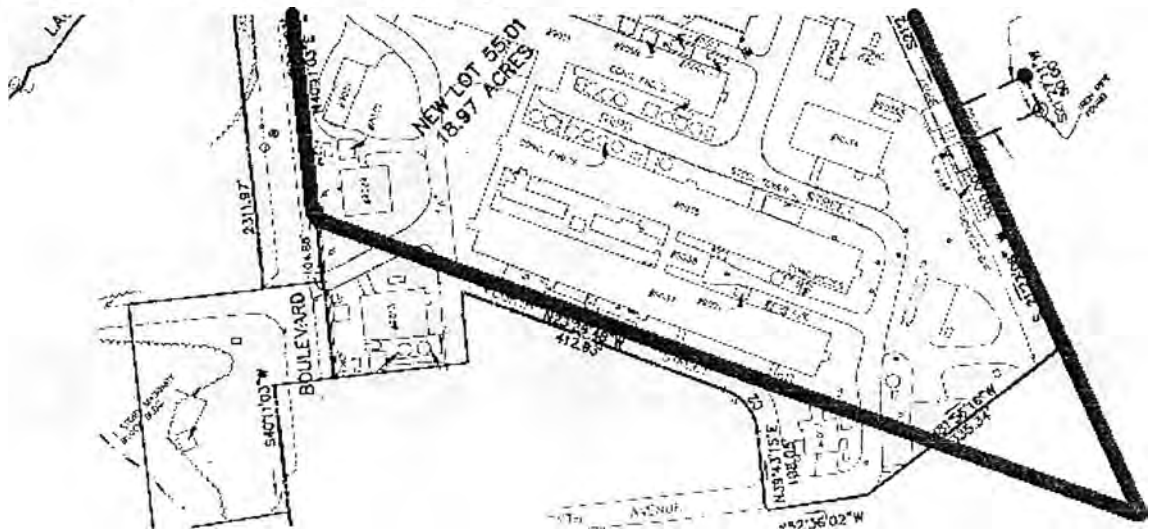
..... Boundary of district increase

Camp Evans Historic District
(Boundary Increase and Decrease)

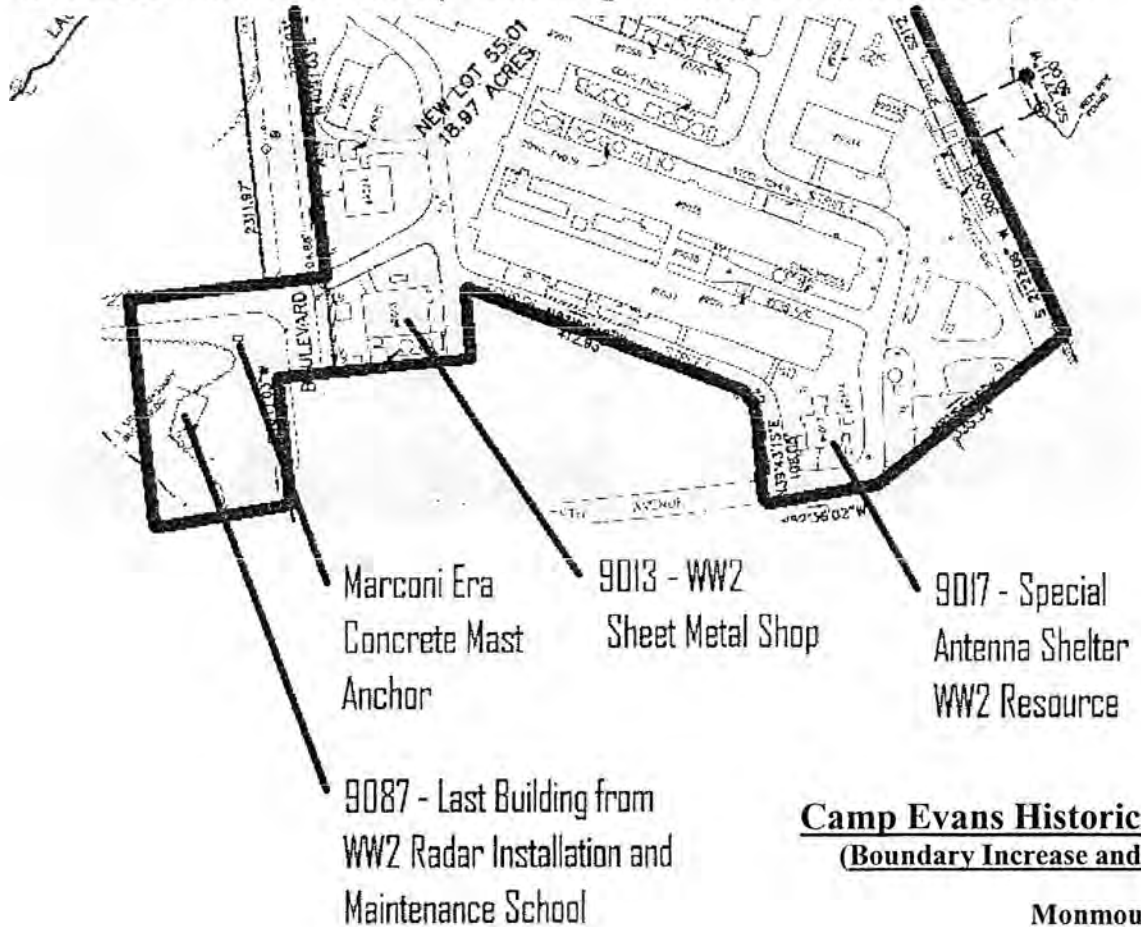
Monmouth Co., NJ

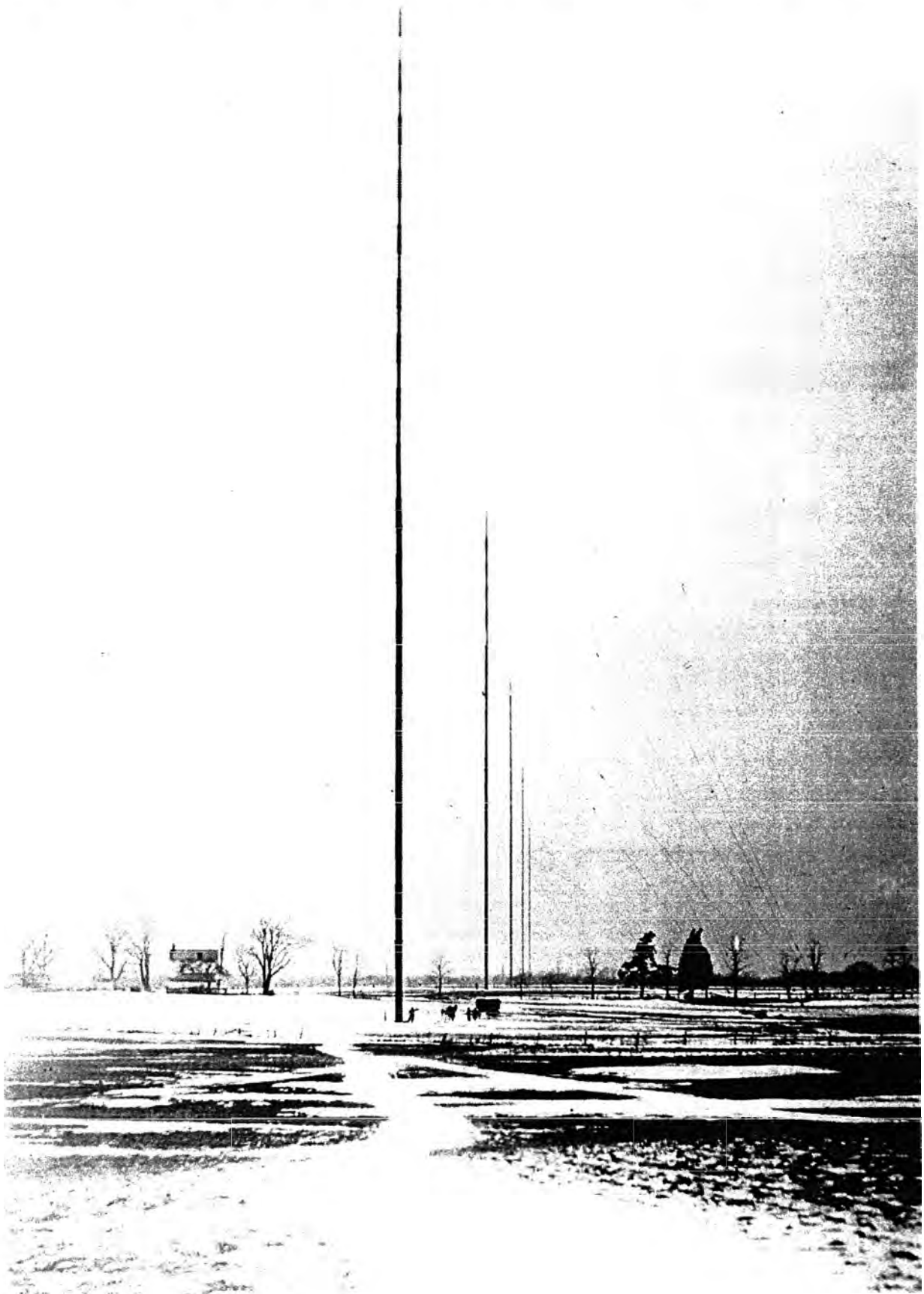
Camp Evans Historic District - Boundary Increase

Original 1999 District Boundary



Increased District Boundary - Showing Additional District Resources

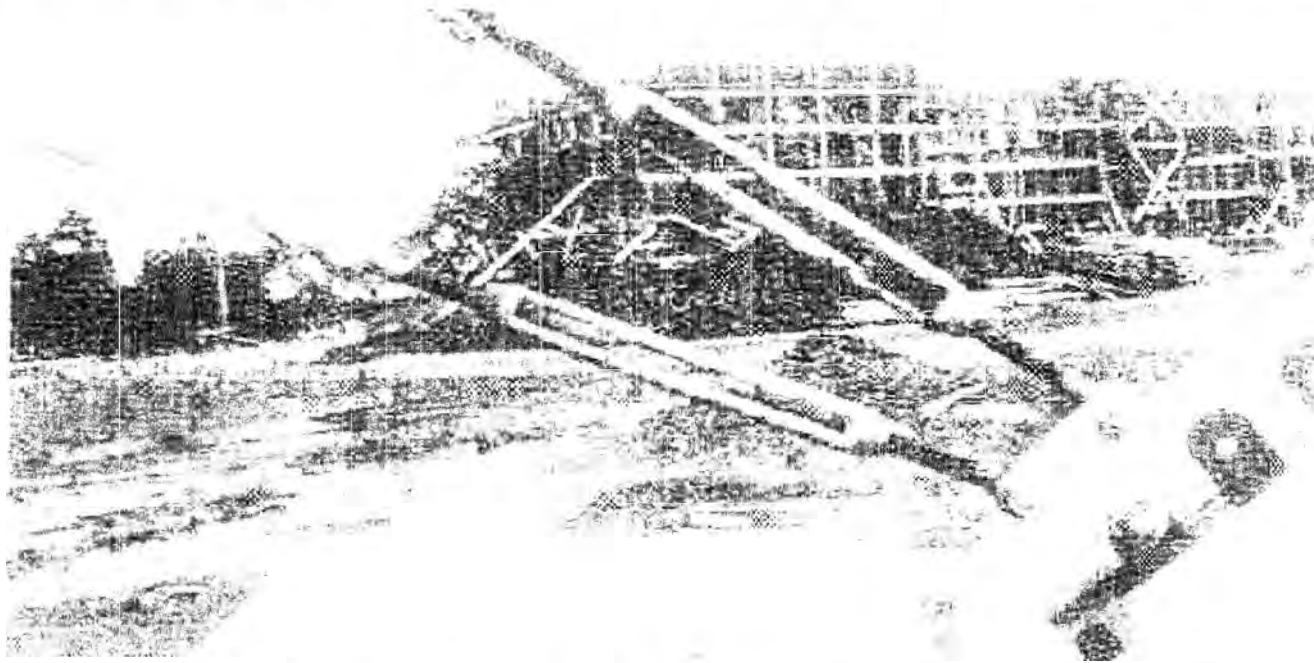




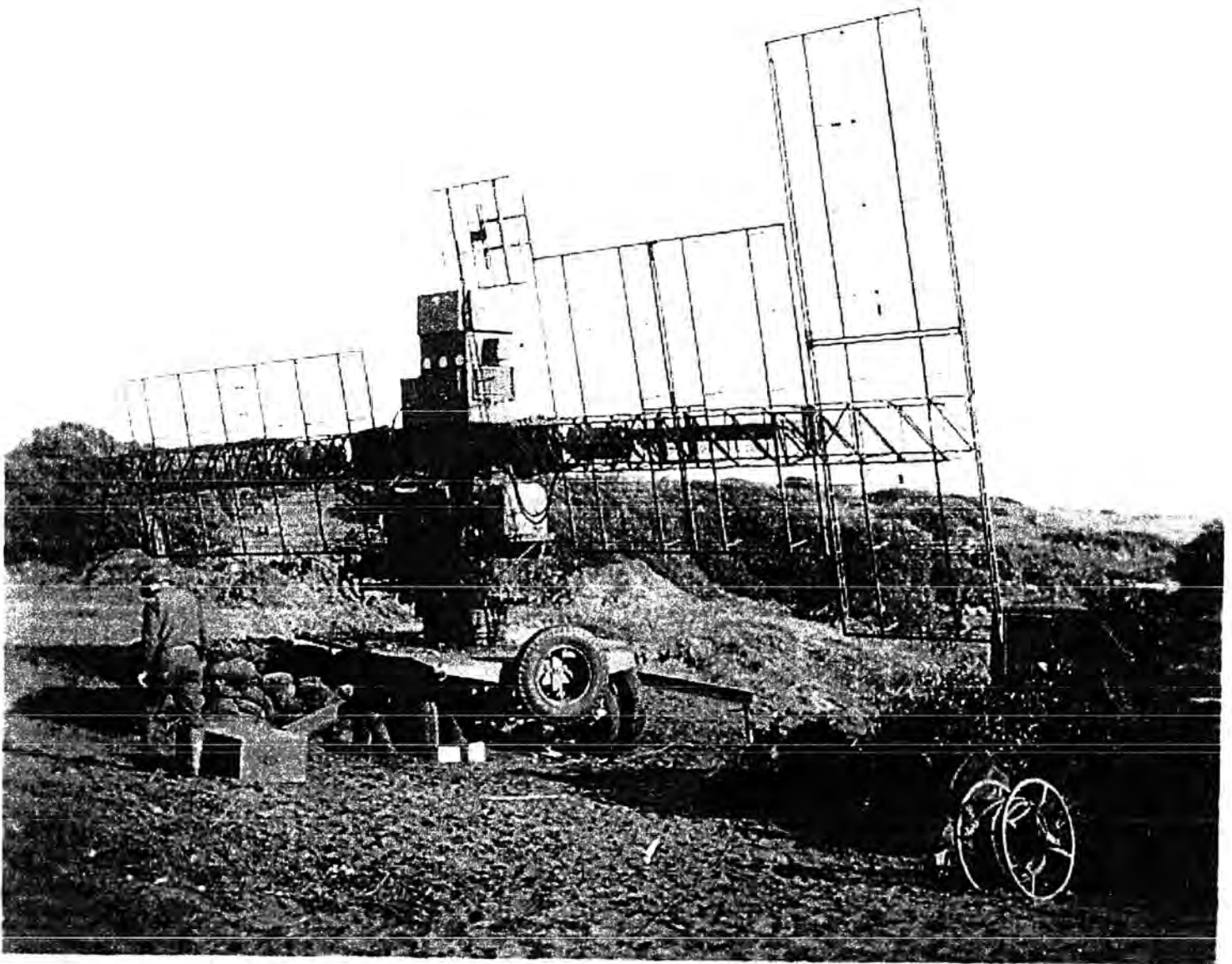
**Historic Photo 1: Marconi Mast System - March 23, 1914 - Edward Henderson Photo
Surviving concrete anchor to be added to historic district is on lower right**

Camp Evans Historic District - Boundary Increase

Monmouth County, New Jersey

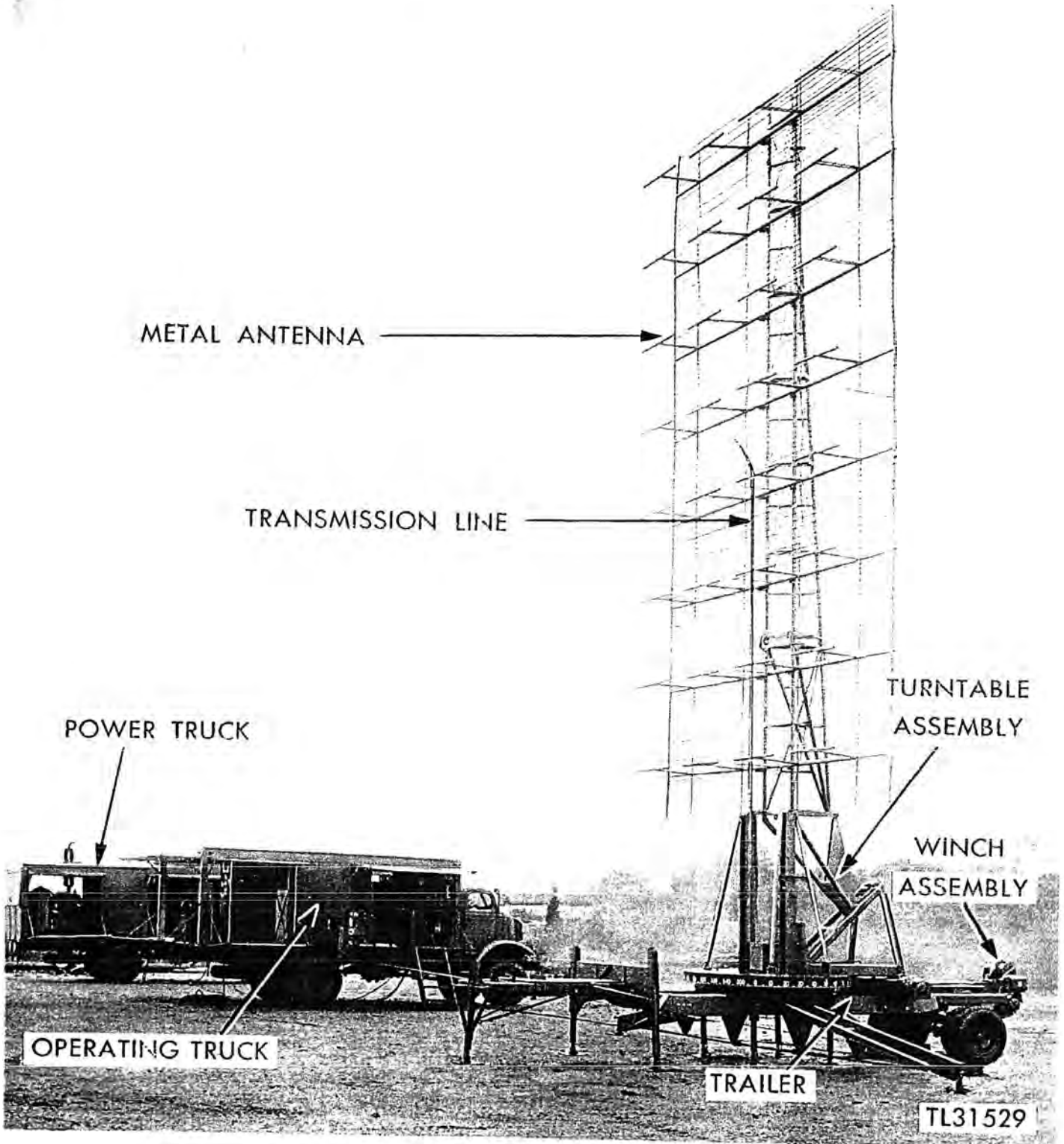


Historic Photo 2: Close up of guy wires attached to mast anchor. This anchor no longer existant. Marconi Hotel under construction in the background. Printed image from Wireless Age 1913.



SCR-268 on Anzio beach 1944 - Joe Leber photo

Historic Photo 3: The SCR-268 was one of the mobile models of radar the U.S. Army housed in the special antenna shelters similiar to 9017. The shelters allowed radar technicians to work on the sensitive electronics in all weather. Photo on file at InfoAge Archive, Wall, NJ

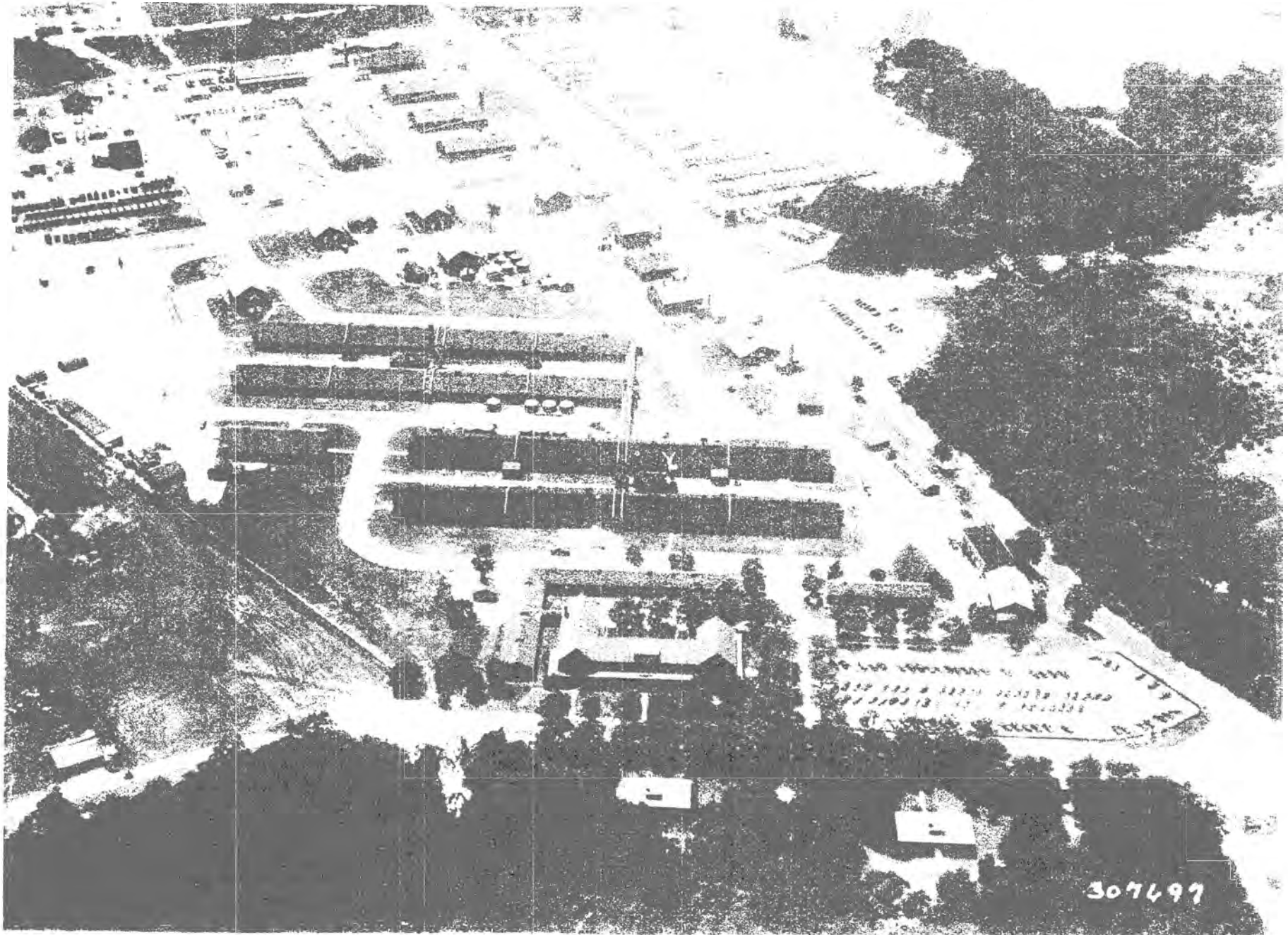


32. Radio Set SCR-270 set up for operation.

Source: H. W. Andrews from Zahl Papers

Historic Photo 4: The SCR-270 was one of the mobile models of radar the U.S. Army used the special antenna shelters to work on and upgrade during WW2. Photoon file at InfoAge archive.

Camp Evans Historic District - Boundary Increase Monmouth County, New Jersey



Historic Photo 5: The Evans Signal Laboratory - June 1945. Note to various radar models in view: on the hotel roof, in front of the 'H' buildings, around the special antenna shelters, around the SCR 16M School and in the large parking lot. Photo on file at InfoAge Archives and NARA.

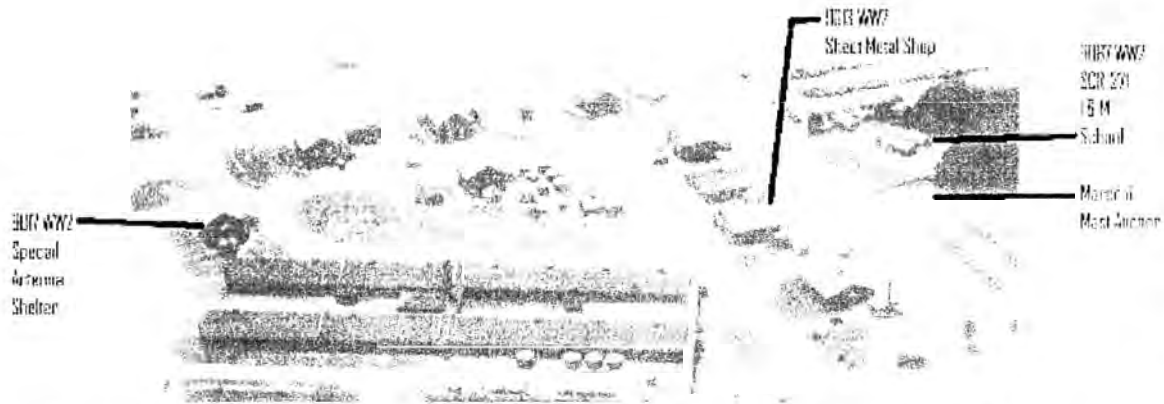
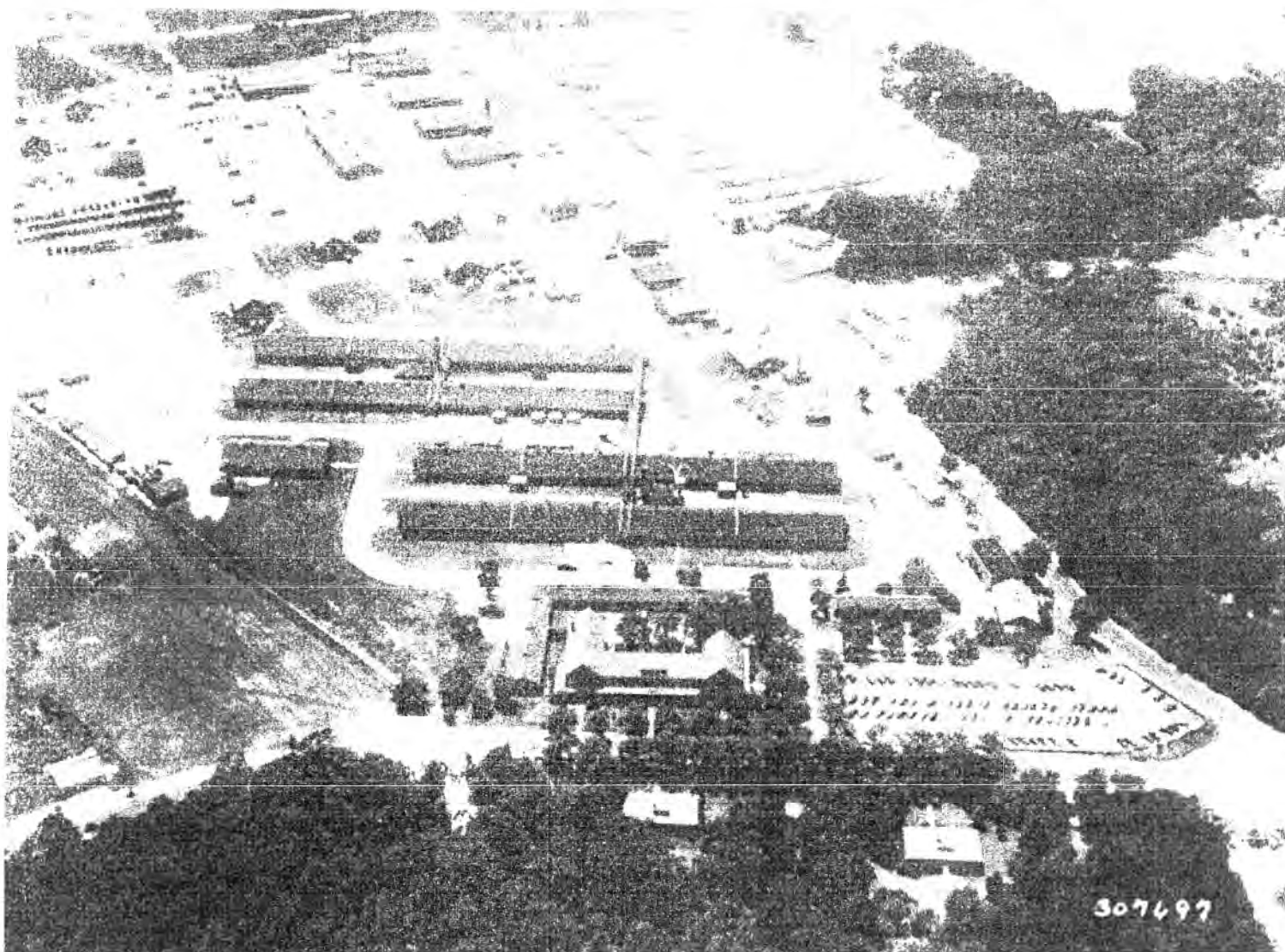
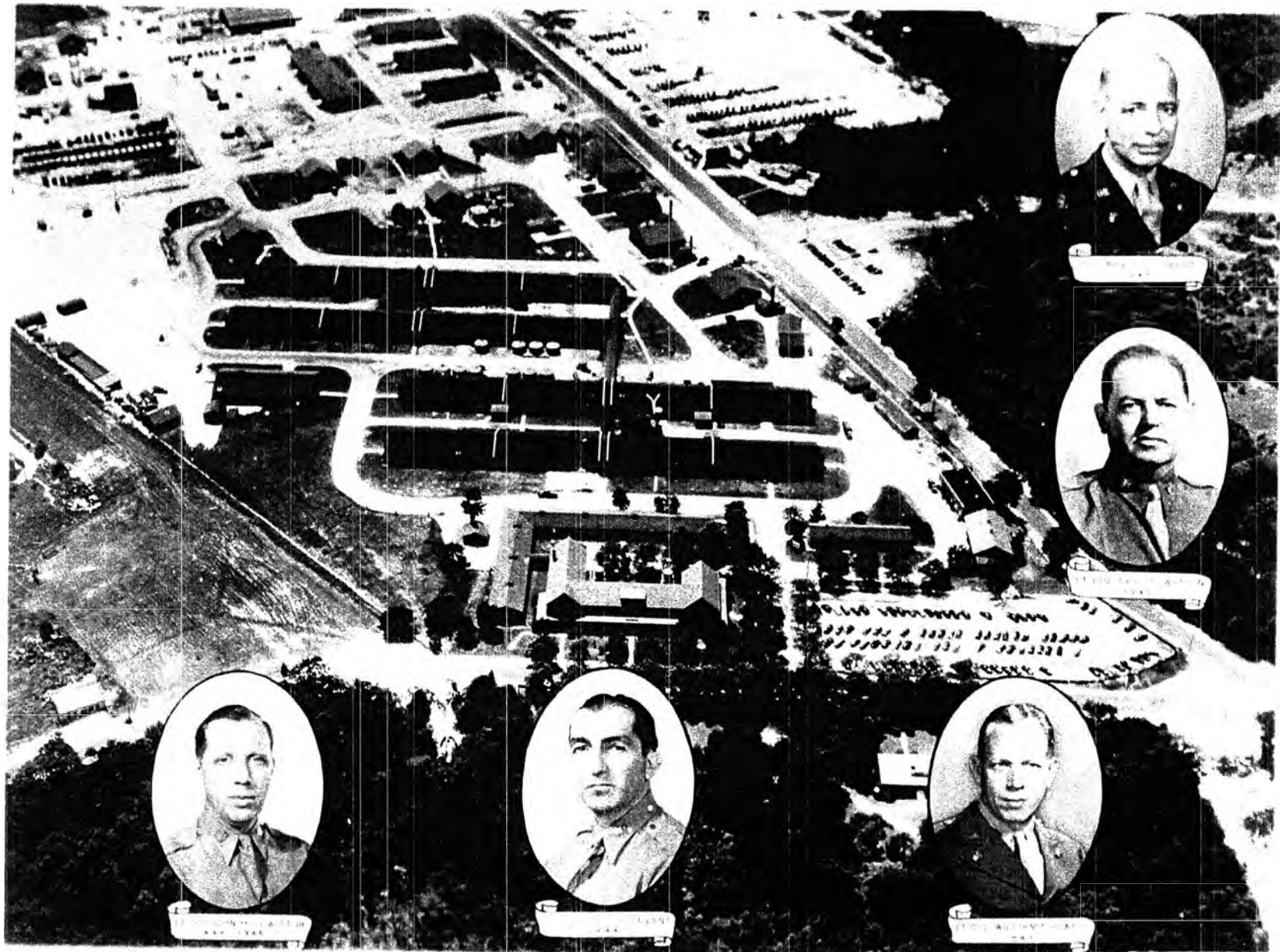


Photo 5A
Key to
Historic
Photo 5
Additional
District
Resources

Camp Evans Historic District - Boundary Increase Monmouth County, New Jersey

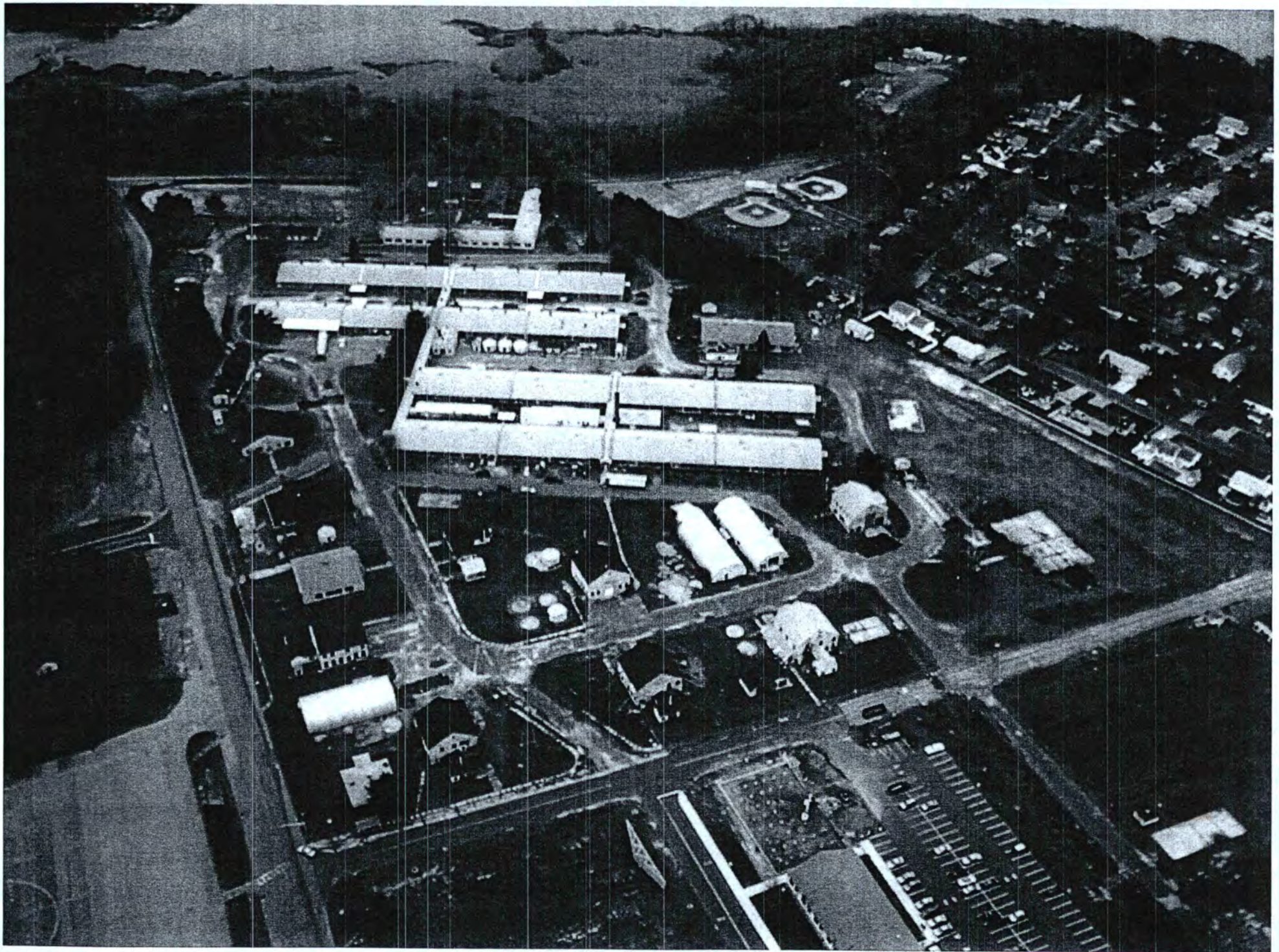


Historic Photo 5: The Evans Signal Laboratory - June 1945. Note to various radar models in view: on the hotel roof, in front of the 'H' buildings, around the special antenna shelters, around the SCR 16M School and in the large parking lot. Photo on file at InfoAge Archives and NARA.



EVANS SIGNAL LABORATORY.. JUNE 1945

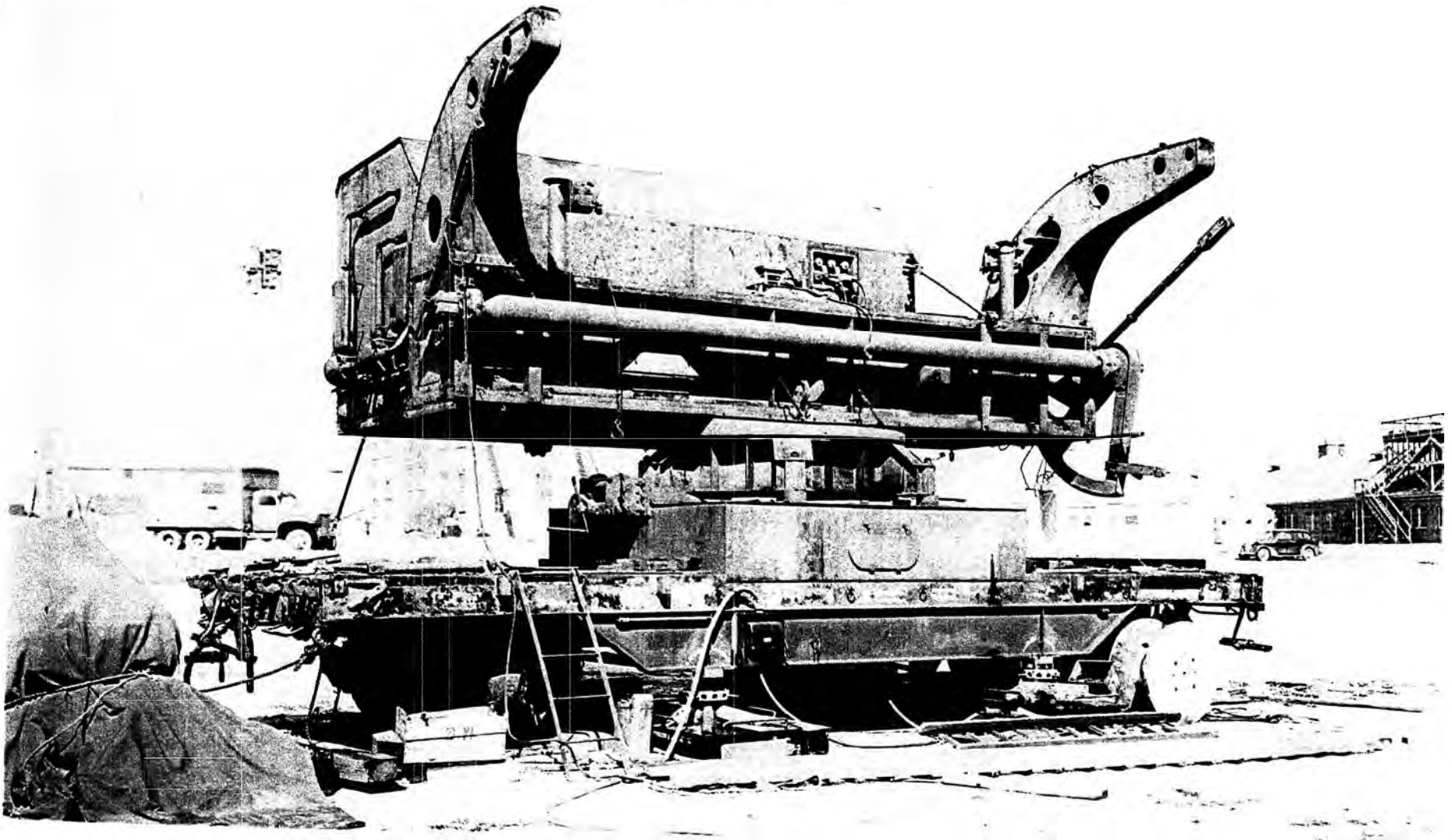
PRESENTED IN CONNECTION WITH THE 7th WAR EARTH DRIVE



Historic Photo 7: Camp Evans 2002 looking northeast

Camp Evans Historic District - Boundary Increase **Monmouth County, New Jersey**

UNCLASSIFIED



UNCLASSIFIED

WURTZBURG RADAR SET

Overall View . Showing Equipment LESS ANTENNA

DATE 3-12-48

SIGNAL CORPS ENGINEERING LABORATORIES

NO. SCEL22486-X

Historic Photo 8: Captured German radar in front of 9017. Note the upper and lower sets of double doors.

Camp Evans Historic District - Boundary Increase Monmouth County, New Jersey

Signal Corps' New Tricks

PSM photos by Hubert Luckett



Improving Nazi Radar. The Army Signal Corps has big plans for this huge "Wurzburger" radar, built by the Germans. At the Evans Signal Laboratory, Belmar,

N. J., the parabolic antenna will be replaced by an even larger one to shoot signals to the moon. A "bedspring" antenna made the first moon contact (PSM, Mar. '46, p. 93).

Historic Photo 9: The front of 9017 can be seen on the right. The lower front door is open. Behind is a SCR-271-D radar tower. Note the flying buttresses of special antenna shelter 9019 in the distance.

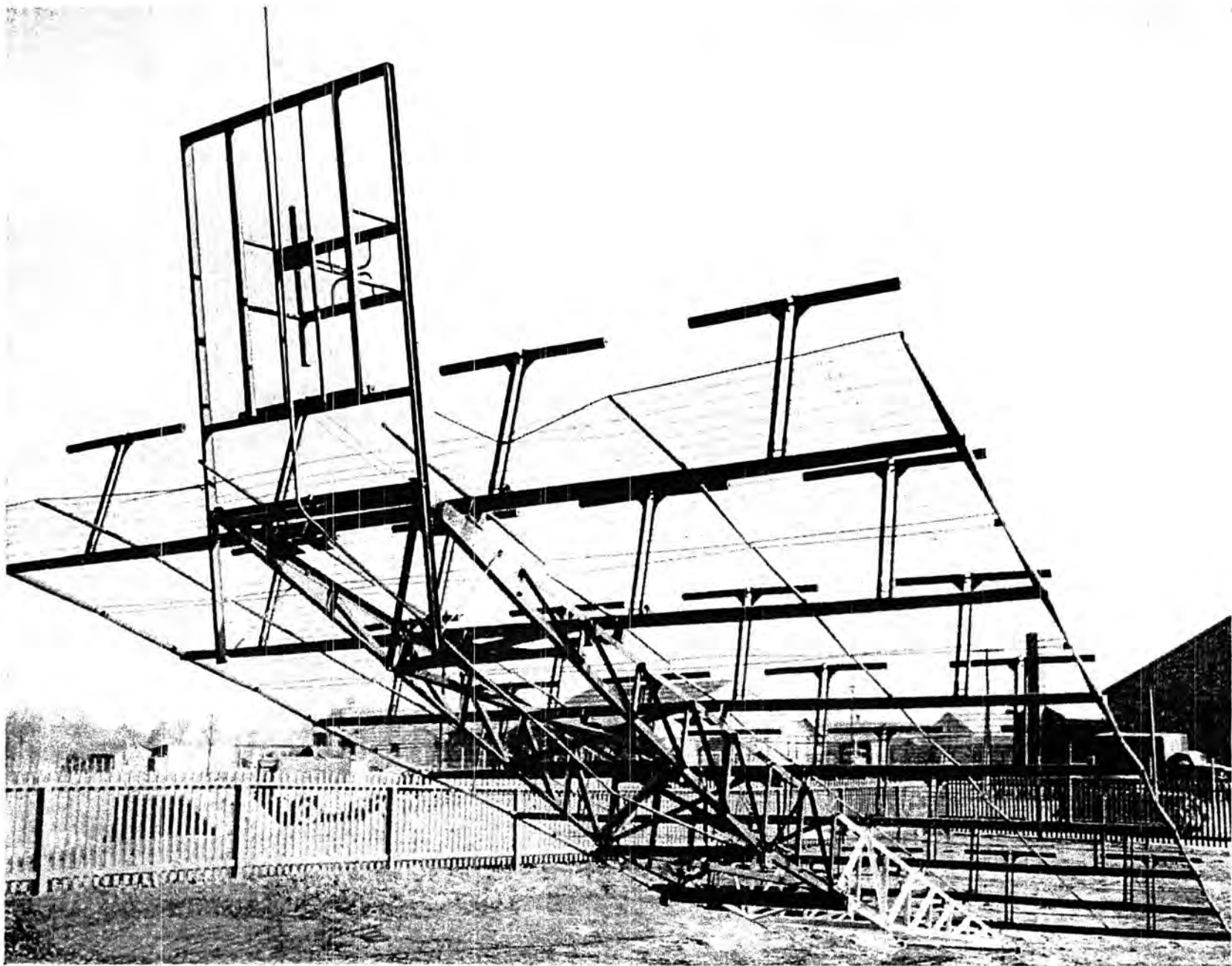


FIGURE 17--REAR VIEW OF ANTENNA AN-126-A MOUNTED ON ANTENNA AN-113-B
SHOWN ON GROUND ABOUT TO BE RAISED

39

Historic Photo 10 View of intersection on Monmouth Bl. and Watson Road. Note Marconi Station guy wire anchor behind fence.
Source: TM 11-1117 Technical Manual, RADIO EQUIPMENT, RC-150-B, RC-150-C... December 12, 1942 Page 39
Gift of Ray Chase



FIGURE 1- GENERAL VIEW OF RADIO SET SCR-271-D.

X

Monmouth Bl. and Watson Road - looking west.

Source: Technical Manual - RADIO EQUIPMENT RC-150-B, RC-150-C, RC-150-D...

December 12, 1942

Gift of Ray Chase

Historic Photo 11: The WW2 SCR Installation and Maintenance School in 1942. Only the small building (9087) behind the center SCR-271-D tower and the concrete footings of the radar towers have survived. The tower with the round tank like structure in the background is a SCR-296, a microwave radar for harbor protection and gun laying.



28. Radio Set SCR-271-D at the Evans Signal Laboratory showing shelter for components and operating personnel, 100ft. tower, and antenna modified for PPI display. IFF antenna is shown top-center on radar antenna.

Soucre: H. W. Andrews from Zahl Papers

Historic Photo 12: WW2 view of SCR I & M School SCR-271-D equipment building. This wooden structure no longer exists. Behind it is 9087. From 1913 to 1926 this same ground was under the 400 foot Marconi Masts. During WWI U.S. Marines patrolled these grounds to protect the masts. Armed MP patrolled during WW2.

UNITED STATES DEPARTMENT OF THE INTERIOR
NATIONAL PARK SERVICE

NATIONAL REGISTER OF HISTORIC PLACES
EVALUATION/RETURN SHEET

REQUESTED ACTION: NOMINATION

PROPERTY NAME: Camp Evans Historic District (Boundary Increase and Decrease)

MULTIPLE NAME:

STATE & COUNTY: NEW JERSEY, Monmouth

DATE RECEIVED: 1/20/12 DATE OF PENDING LIST: 2/21/12
DATE OF 16TH DAY: 3/07/12 DATE OF 45TH DAY: 3/07/12
DATE OF WEEKLY LIST:

REFERENCE NUMBER: 12000076

REASONS FOR REVIEW:

APPEAL: N DATA PROBLEM: N LANDSCAPE: N LESS THAN 50 YEARS: N
OTHER: N PDIL: N PERIOD: N PROGRAM UNAPPROVED: N
REQUEST: Y SAMPLE: N SLR DRAFT: N NATIONAL: Y

COMMENT WAIVER: N

ACCEPT RETURN REJECT 3/7/12 DATE

ABSTRACT/SUMMARY COMMENTS:

*Sending revised map & Resource count page
see attached*

RECOM./CRITERIA Return

REVIEWER _____ DISCIPLINE _____

TELEPHONE _____ DATE _____

DOCUMENTATION see attached comments Y/N see attached SLR Y/N

If a nomination is returned to the nominating authority, the nomination is no longer under consideration by the NPS.

UNITED STATES DEPARTMENT OF THE INTERIOR
NATIONAL PARK SERVICE

NATIONAL REGISTER OF HISTORIC PLACES
EVALUATION/RETURN SHEET

REQUESTED ACTION: RESUBMISSION

PROPERTY NAME: Camp Evans Historic District (Boundary Increase and Decrease)

MULTIPLE NAME:

STATE & COUNTY: NEW JERSEY, Monmouth

DATE RECEIVED: 7/20/12 DATE OF PENDING LIST:
DATE OF 16TH DAY: DATE OF 45TH DAY: 9/05/12
DATE OF WEEKLY LIST:

REFERENCE NUMBER: 12000076

DETAILED EVALUATION:

ACCEPT RETURN REJECT 8/21/12 DATE

ABSTRACT/SUMMARY COMMENTS:

Corrections made - resource count & type corrected.

RECOM./CRITERIA _____
REVIEWER Am DeLine DISCIPLINE Historic
TELEPHONE _____ DATE 8/21/12

DOCUMENTATION see attached comments Y/N see attached SLR Y/N



NY Monmouth County Camp Evans HD Brady
Increase 00001

2



ND Monmouth County Camp EVANS HD Brady Increase

00002



NT Monmouth County Camp EVANS HD Bricky Increase
00003

4



NY Monmouth County Camp EVANS HD Bndry
Increase 00004

5



NO Monmouth County Camp Evans HD Endry Increase
00005



NT Monmouth County Camp Evans HD Bridg Increase
00006



NT Monmouth County Camp Evans HD Bndry Increase
00007



NY Monmouth County Camp Evans HD Gndry Increase
00008

9



NT Monmouth County Camp Evans HD Bndry Increase
00009



NJ Monmouth County Camp Evans HD Brndy Increase
00010



NY Monmouth County Camp Evans HD Bndry Increase
00011

12



NJ Monmouth County Camp Evans HD Brndy Increase
0001a

13



NT Monmouth County Camp Evans H.D Bridry Increase
00013

14



NY Monmouth County Camp EVANS HD Bndry Increase
00014



NE Monmouth County Camp Evans HO Bidry Increase
00015



NJ Monmouth County Camp Evans HD Brndy Increase
00016



NT Monmouth County Camp Errans HD Bndry Increase
00017



N5 Monmouth County Camp Evans HD Brndy Increase
00018

19



NJ Monmouth County Camp Evans HD Bndry Increase
00019



10 Monmouth County Camp Evans #10 Bndry Increase
00020



115 Monmouth County Camp Evans HD Bndry Increase
00021

22



NT Monmouth County Camp ERANS HD Bndry Increase
0002a

23



NO Monmouth County Camp ERANS HD Bndry Increase
00023



NY Monmouth County Camp Evans 4D Bndy Increase
00024



NY Monmouth County Comp ERANS HD Bndry Increase
00025

26



NJ Monmouth County Camp Evans HD Bndry Increase
00026

27



NY Monmouth County Camp EVANS HD Bndry Increase
00027

28



NY Monmouth County Camp Evans 4D Bndry Increase 00028



NT Monmouth County Camp Evans HD Bndry Increase
00029



NJ Monmouth County Camp Errans HD Bndry Increase
00030

31



NJ Monmouth County Camp Evans HD Bndry Increase
00031



NJ Monmouth County Camp EVANS HD Bndry Increase
00032



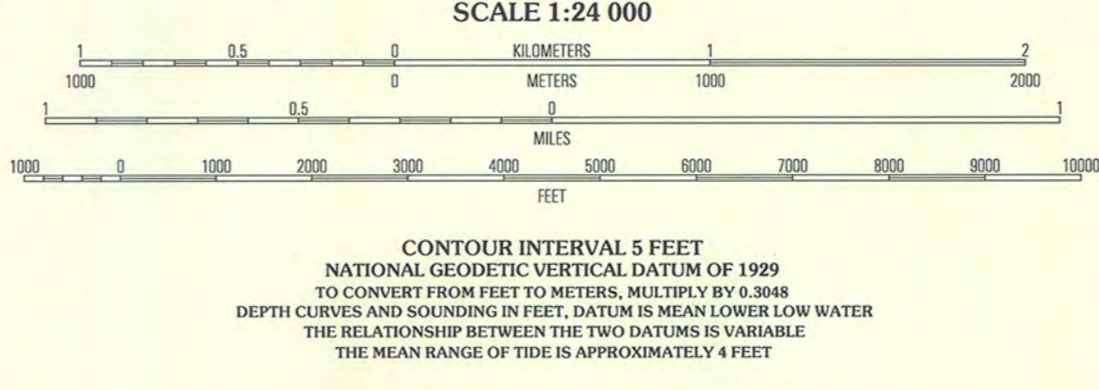
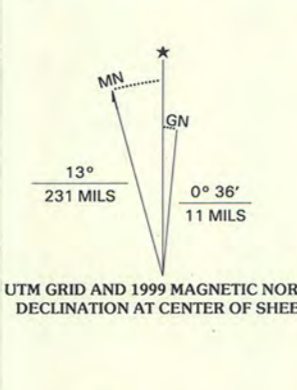
U.S. DEPARTMENT OF THE INTERIOR
U.S. GEOLOGICAL SURVEY

ASBURY PARK QUADRANGLE
NEW JERSEY
7.5-MINUTE SERIES (TOPOGRAPHIC)



Camp Evans HD
Boundary Increase +
Decrease
NJ Monmouth Co.
UTM:
Z=18
E=579830
N=4498725

Produced by the United States Geological Survey
Topography compiled 1986. Planimetry derived from imagery taken 1995 and other sources. Survey control current as of 1984
Selected hydrographic data compiled from NOS Charts 12323 (1983) and 12324 (1986). This information is not intended for navigational purposes
North American Datum of 1983 (NAD 83). Projection and 1000-meter grid: Universal Transverse Mercator, zone 18
2500-meter ticks: New Jersey Coordinate System of 1983
North American Datum of 1927 (NAD 27) is shown by dashed corner ticks. The values of the shift between NAD 83 and NAD 27 for 7.5-minute intersections are obtainable from National Geodetic Survey NADCON software
There may be private inholdings within the boundaries of the National or State reservations shown on this map
Landmark buildings verified 1988



ROAD CLASSIFICATION

Primary highway Light-duty road, hard or hard surface
Secondary highway Improved surface
Unimproved road

Interstate Route U.S. Route State Route

1	2	3
4	5	6
7	8	

1 Marlboro
2 Long Branch
3 Farmingdale
4 Lakewood
5 Point Pleasant
6
7
8

CONTOUR INTERVAL 5 FEET
NATIONAL GEODETIC VERTICAL DATUM OF 1929
TO CONVERT FROM FEET TO METERS, MULTIPLY BY 0.3048
DEPTH CURVES AND SOUNDING IN FEET. DATUM IS MEAN LOWER LOW WATER
THE RELATIONSHIP BETWEEN THE TWO DATUMS IS VARIABLE
THE MEAN RANGE OF TIDE IS APPROXIMATELY 4 FEET

THIS MAP COMPLIES WITH NATIONAL MAP ACCURACY STANDARDS
FOR SALE BY U.S. GEOLOGICAL SURVEY, P.O. BOX 25286, DENVER, COLORADO 80225
A FOLDER DESCRIBING TOPOGRAPHIC MAPS AND SYMBOLS IS AVAILABLE ON REQUEST

ASBURY PARK, NJ
1995
NIMA 6164 II E-SERIES V822





HPO Proj. #09-0830-4
HPO K2011-110

State of New Jersey

DEPARTMENT OF ENVIRONMENTAL PROTECTION
NATURAL AND HISTORIC RESOURCES

Office of the Assistant Commissioner
MAIL CODE 501-03A
PO Box 420
Trenton, New Jersey 08625
609-292-3541/Fax: 609-984-0836

CHRIS CHRISTIE
GOVERNOR

BOB MARTIN
COMMISSIONER

KIM GUADAGNO
Lt. Governor

November 18, 2011

Paul Loether, Chief
National Register of Historic Places
National Park Service
Department of the Interior
Washington, D.C. 20240

Dear Mr. Loether:

I am pleased to submit the nomination for the Camp Evans Historic District (Boundary increase and decrease), Monmouth County, New Jersey, for National Register consideration.

This nomination has received majority approval from the New Jersey State Review Board for Historic Sites. All procedures were followed in accordance with regulations published in the Federal Register.

Should you want any further information concerning this application, please feel free to contact Daniel D. Saunders, Administrator, New Jersey Historic Preservation Office, Mail code 501-04B, P.O. Box 420, Trenton, New Jersey 08625-0420, or call him at (609) 633-2397.

Sincerely,

Amy Cradic
Deputy State Historic
Preservation Officer



HPO Proj. #09-0830-16
HPO F2012-331

State of New Jersey

DEPARTMENT OF ENVIRONMENTAL PROTECTION NATURAL AND HISTORIC RESOURCES

Office of the Assistant Commissioner
MAIL CODE 501-03A
PO Box 420
Trenton, New Jersey 08625
609-292-3541/Fax: 609-984-0836

CHRIS CHRISTIE
GOVERNOR

KIM GUADAGNO
Lt. Governor

BOB MARTIN
COMMISSIONER

July 3, 2012

Paul Loether, Chief
National Register of Historic Places
National Park Service
Department of the Interior
Washington, D.C. 20240

Dear Mr. Loether:

I am pleased to submit a revised nomination for the Camp Evans Historic District (Boundary increase and decrease), Monmouth County, New Jersey, for National Register consideration.

This nomination has received majority approval from the New Jersey State Review Board for Historic Sites. All procedures were followed in accordance with regulations published in the Federal Register.

Should you want any further information concerning this application, please feel free to contact Daniel D. Saunders, Administrator, New Jersey Historic Preservation Office, Mail code 501-04B, P.O. Box 420, Trenton, New Jersey 08625-0420, or call him at (609) 633-2397.

Sincerely,

Rich Boornazian
Deputy State Historic
Preservation Officer