



Ingleside (Stoddard Baptist Home)

Washington, D.C.

Photo: William Lebovich

Date: August

Negative at D.C. Historic Preservation

Division

North and East facades

Photo #1



Ingleside (Stoddard Baptist Home)

Washington, D.C.

Photo: William Lebovich

Date: August 1986

Negative at D.C. Historic Preservation

Division

North facade

Photo #2



Ingleside (Stoddard Baptist Home)

Washington, D.C.

Photo: William Lebovich

Date: August 1986

Negative at D.C. Historic Preservation

Division

North facade (link between main building
and addition)

Photo #3

.



Ingleside (Stoddard Baptist Home)

Washington, D.C.

Photo: William Lebovich

Date: August 1986

Negative at D.C. Historic Preservation

Division

North facade (addition)

Photo #4



Ingleside (Stoddard Baptist Home)

Washington, D.C.

Photo: William Lebovich

Date: August 1986

Negative at D.C. Historic Preservation

Division

South facade

Photo #5



Ingleside (Stoddard Baptist Home)

Washington, D.C.

Photo: William Lebovich

Date: August 1986

Negative at D.C. Historic Preservation

Division

Main (north) Entrance

Photo #6



Ingleside (Stoddard Baptist Home)

Washington, D.C.

Photo: William Lebovich

Date: August 1986

Negative at D.C. Historic Preservation

Division

Main Stair Hall

Photo #7



Ingleside (Stoddard Baptist Home)

Washington, D.C.

Photo: William Lebovich

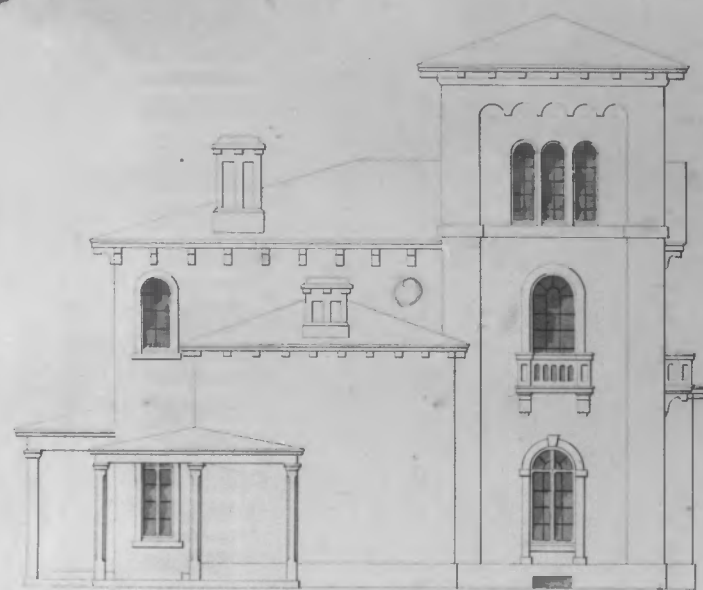
Date: August 1986

Negative at D.C. Historic Preservation

Division

East Parlor

Photo #8



NORTH ELEVATION

SCALE 6 FEET TO AN INCH



SOUTH ELEVATION

DESIGN FOR A VILLA [?]

T. U. WALTER ESQ.

Walter Collection

Philadelphia

FIGURE 1
 Drawings of Ingleside by Thomas U.
 Walter, 1851.
 Thomas U. Walter Collection, the
 Athenaeum of Philadelphia



FIGURE 2
Undated photograph marked "Hewlings'
Villa"
Thomas U. Walter Collection, the
Athenaeum of Philadelphia