



WINSTON COUNTY COURT HOUSE

U.S. POST OFFICE

Winston County Courthouse

Double Springs, Alabama, Winston County

Steven Kay, February 1987

Alabama Historical Commission

Front elevation, camera facing north

Photo number: 1



Winston County Courthouse

Double Springs, Alabama, Winston County

Steven Kay, February 1987

Alabama Historical Commission

Side elevation, camera facing N.E.

Photo number: 2



Winston County Courthouse

Double Springs, Alabama, Winston County

Steven Kay, February 1987

Alabama Historical Commission

Side elevation, camera facing east

Photo number: 3



Winston County Courthouse

Double Springs, Alabama, Winston County

Steven Kay, February 1987

Alabama Historical Commission

Side elevation (1894 portion), camera facing
east

Photo number: 4



Winston County Courthouse

Double Springs, Alabama, Winston County

Steven Kay, February 1987

Alabama Historical Commission

Rear elevation, camera facing south

Photo number: 5



Winston County Courthouse

Double Springs, Alabama, Winston County

Steven Kay, February 1987

Alabama Historical Commission

Rear elevation (1962 addition), camera facing
south

Photo number: 6



Winston County Courthouse

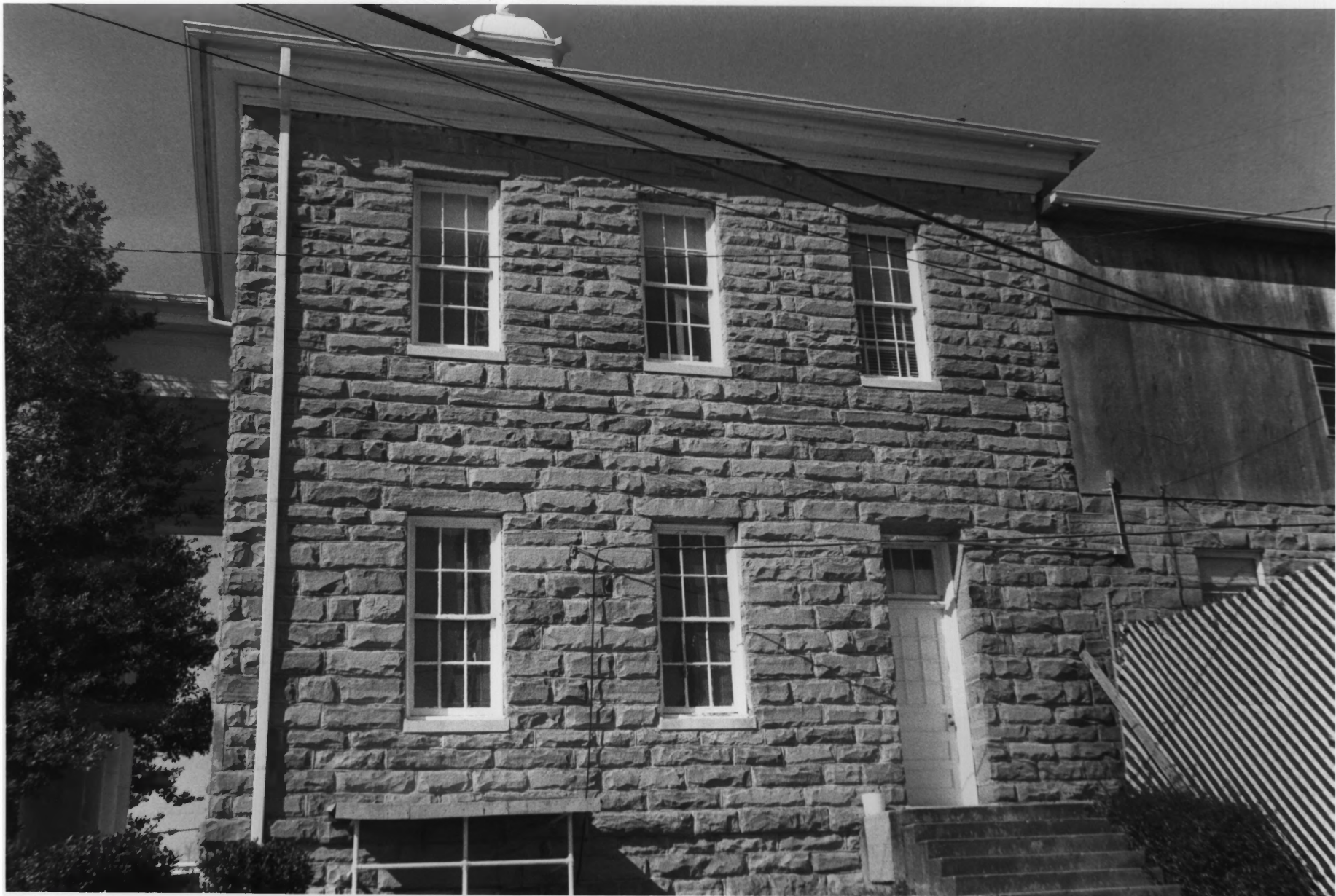
Double Springs, Alabama, Winston County

Steven Kay, February 1987

Alabama Historical Commission

Front and side elevations, camera facing N.W.

Photo number: 7



Winston County Courthouse

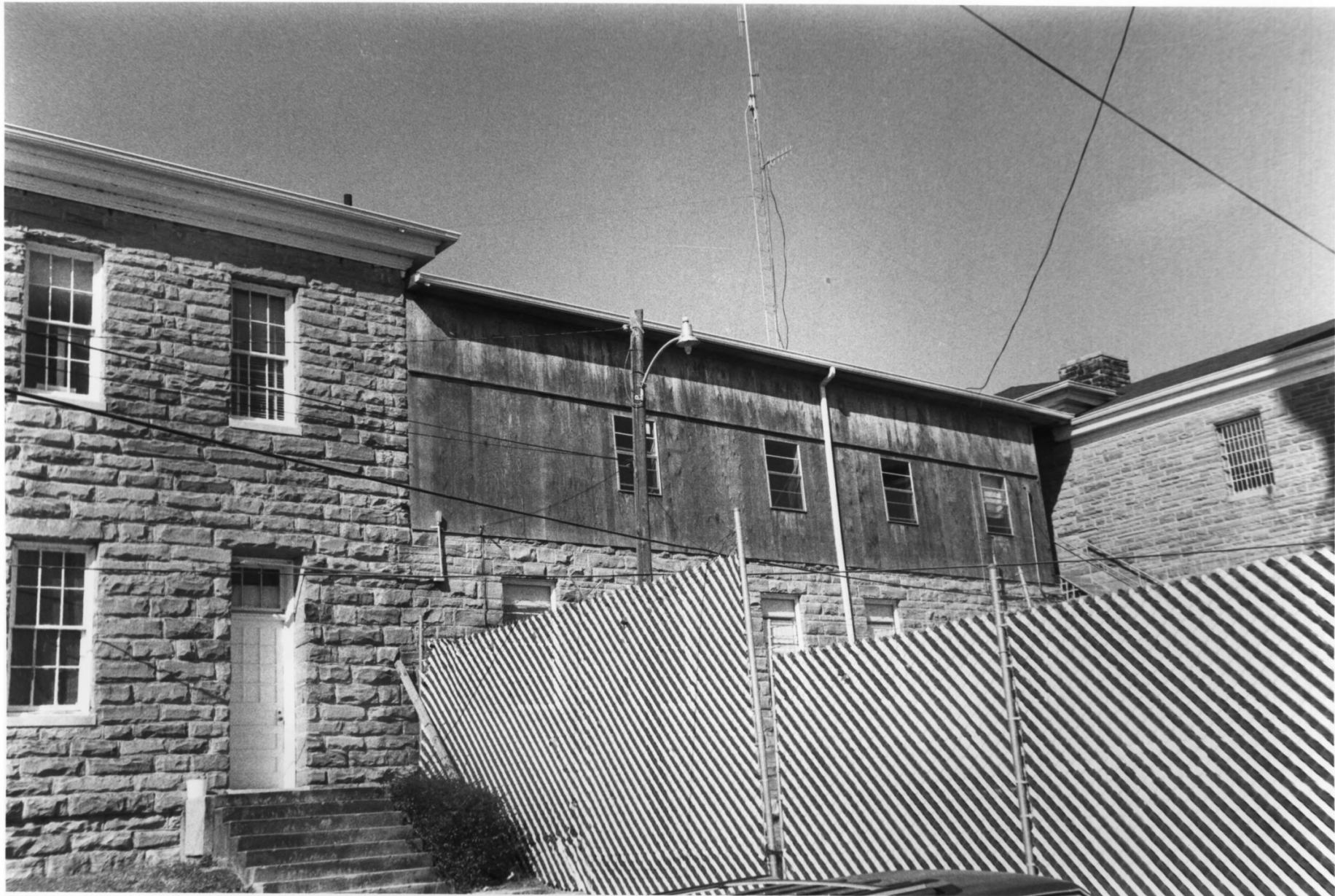
Double Springs, Alabama, Winston County

Steven Kay, February 1987

Alabama Historical Commission

Side elevation (1929 portion), camera facing
west

Photo number: 8



Winston County Courthouse

Double Springs, Alabama, Winston County

Steven Kay, February 1987

Alabama Historical Commission

Side elevation (20th cent. enclosure),
camera facing N.W.

Photo number: 9



Winston County Courthouse

Double Springs, Alabama, Winston County

Steven Kay, February 1987

Alabama Historical Commission

Front elevation-detail door frame, camera
facing north

Photo number: 10



Winston County Courthouse
Double Springs, Alabama, Winston County

Steven Kay, February 1987
Alabama Historical Commission

Front elevation - detail typical window,
camera facing north

Photo number: 11



Winston County Courthouse

Double Springs, Alabama, Winston County

Steven Kay, February 1987

Alabama Historical Commission

Side elevation - detail jail windows, camera
facing east

Photo number: 12



Winston County Courthouse
Double Springs, Alabama, Winston County

Steven Kay, February 1987
Alabama Historical Commission

Side elevation - detail water table (1894),
camera facing east

Photo number: 13



Winston County Courthouse
Double Springs, Alabama, Winston County

Steven Kay, February 1987
Alabama Historical Commission

Side elevation - detail water table (1929),
camera facing east

Photo number: 14

JUDGE OF PROBATE

PROBATE OFFICE



Winston County Courthouse

Double Springs, Alabama, Winston County

Steven Kay, February 1987

Alabama Historical Commission

1st floor - probate office, detail vault door,
camera facing west

Photo number: 15 .



Winston County Courthouse.

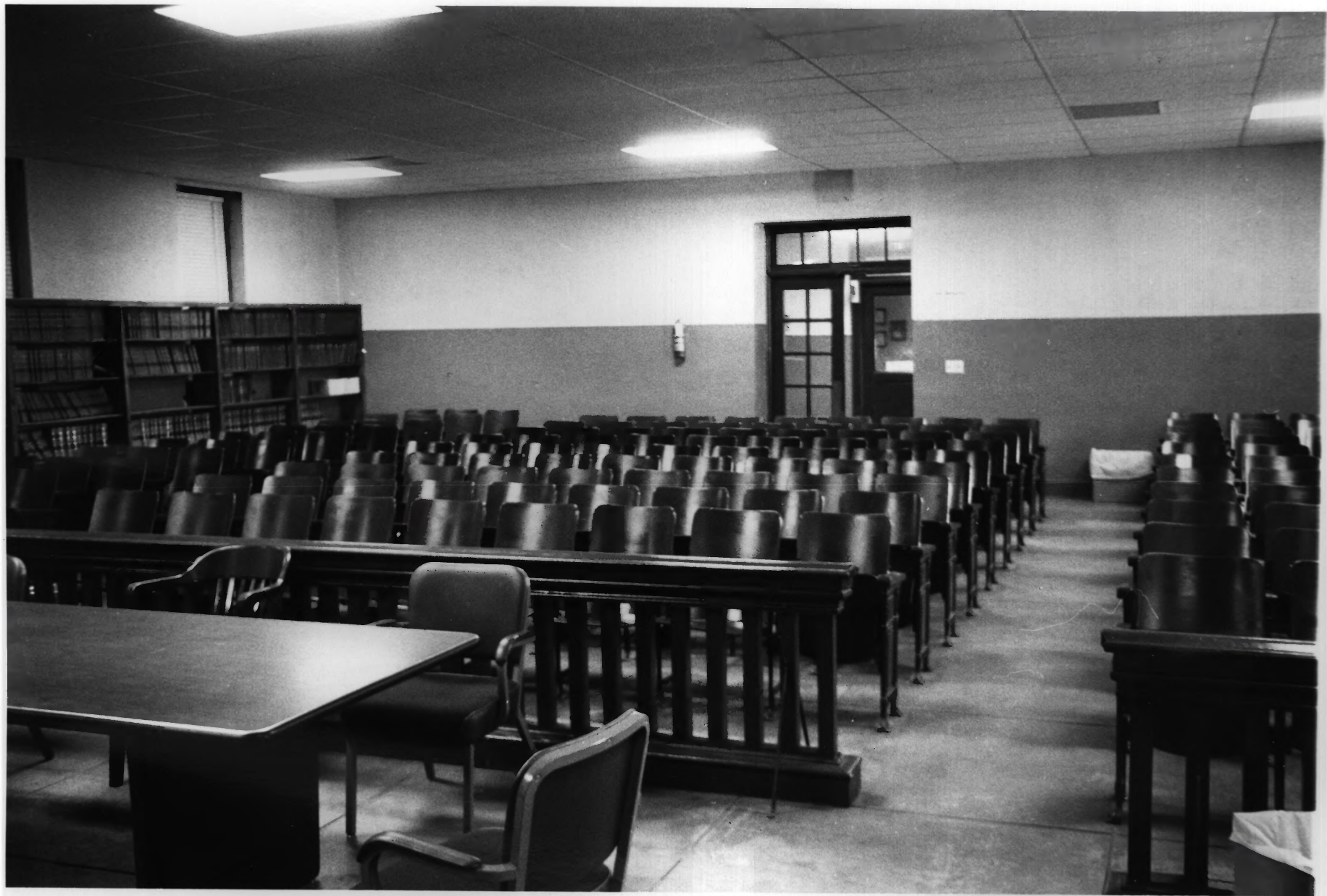
Double Springs, Alabama, Winston County

Steven Kay, February 1987

Alabama Historical Commission

1st floor - probate judge's office, detail
vault door, camera facing north.

Photo number: 16



Winston County Courthouse

Double Springs, Alabama, Winston County

Steven Kay, February 1987

Alabama Historical Commission

2nd floor - courtroom, camera facing north

Photo number: 17



Winston County Courthouse

Double Springs, Alabama, Winston County

Steven Kay, February 1987

Alabama Historical Commission

2nd floor courtroom, detail audience seating

Photo number: 18



Winston County Courthouse

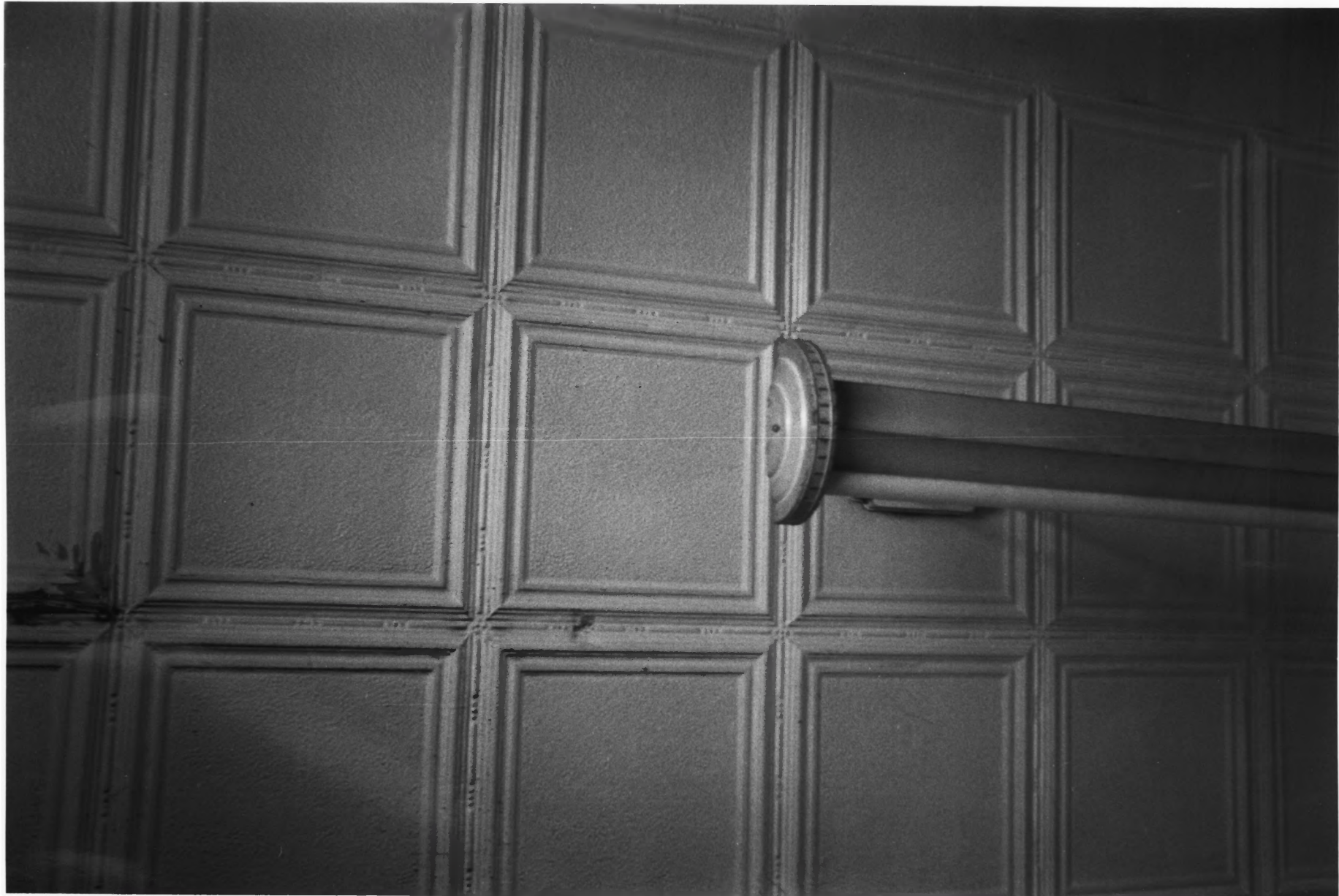
Double Springs, Alabama, Winston County

Steven Kay, February 1987

Alabama Historical Commission

2nd floor witness room, detail tin ceiling

Photo number: 19



Winston County Courthouse

Double Springs, Alabama, Winston County

Steven Kay, February 1987

Alabama Historical Commission

2nd floor witness room, detail tin ceiling

Photo number: 20