



435

United States Department of the Interior  
National Park Service  
National Register of Historic Places  
Registration Form

This form is for use in nominating or requesting determination for individual properties and districts. See instruction in How to Complete the National Register of Historic Places Registration Form (National Register Bulletin 16A). Complete each item by marking "x" in the appropriate box or by entering the information requested. If an item does not apply to the property being documented, enter "N/A" for "not applicable." For functions, architectural classification, materials and areas of significance, enter only categories and subcategories from the instructions. Place additional entries and narrative items on continuation sheets (NPS Form 10-900a). Use a typewriter, word processor, or computer, to complete all items.

1. Name of Property

historic name Bennett-Field House

other names/site number Christ Centered Ministries Priory House, 5DV.3534

2. Location

street & number 740 Clarkson St. [N/A] not for publication

city or town Denver [N/A] vicinity

state Colorado code CO county Denver code 031 zip code 80218

3. State/Federal Agency Certification

As the designated authority under the National Historic Preservation Act, as amended, I hereby certify that this  nomination  request for determination of eligibility meets the documentation standards for registering properties in the National Register of Historic Places and meets the procedural and professional requirements set forth in 36 CFR Part 60. In my opinion, the property  meets  does not meet the National Register criteria. I recommend that this property be considered significant  nationally  statewide  locally. ( See continuation sheet for additional comments.)

*[Handwritten Signature]*

State Historic Preservation Officer

5-13-10  
Date

Signature of certifying official/Title

Office of Archaeology and Historic Preservation, Colorado Historical Society  
State or Federal agency and bureau

In my opinion, the property  meets  does not meet the National Register criteria. ( See continuation sheet for additional comments.)

Signature of certifying official/Title

Date

State or Federal agency and bureau

4. National Park Service Certification

I hereby certify that the property is :

- entered in the National Register  See continuation sheet.
- determined eligible for the National Register  See continuation sheet.
- determined not eligible for the National Register.
- removed from the National Register  See continuation sheet.
- other, explain  See continuation sheet.

*[Handwritten Signature]*  
Signature of the Keeper  
Edson H. Beall  
Date of Action 7.8.10

Bennett-Field House  
Name of Property

Denver, Colorado  
County/State

### 5. Classification

#### Ownership of Property

(Check as many boxes as apply)

- private
- public-local
- public-State
- public-Federal

#### Category of Property

(Check only one box)

- building(s)
- district
- site
- structure
- object

#### Number of Resources within Property

(Do not count previously listed resources.)

Contributing		Noncontributing	
2		1	buildings
0		0	sites
0		0	structures
0		0	objects
2		1	Total

#### Name of related multiple property listing.

(Enter "N/A" if property is not part of a multiple property listing.)

N/A

#### Number of contributing resources previously listed in the National Register.

0

### 6. Function or Use

#### Historic Function

(Enter categories from instructions)

DOMESTIC/single dwelling  
DOMESTIC/secondary structure  
\_\_\_\_\_  
\_\_\_\_\_  
\_\_\_\_\_  
\_\_\_\_\_

#### Current Functions

(Enter categories from instructions)

DOMESTIC/multiple dwelling  
DOMESTIC/secondary structure  
\_\_\_\_\_  
\_\_\_\_\_  
\_\_\_\_\_  
\_\_\_\_\_

### 7. Description

#### Architectural Classification

(Enter categories from instructions)

LATE 19<sup>TH</sup> AND 20<sup>TH</sup> CENTURY REVIVALS/  
Classical Revival  
NO STYLE  
\_\_\_\_\_  
\_\_\_\_\_  
\_\_\_\_\_

#### Materials

(Enter categories from instructions)

foundation	Brick
walls	Brick
	Wood
roof	Asphalt
other	Stone
	Brick

#### Narrative Description

(Describe the historic and current condition of the property on one or more continuation sheets.)

**United States Department of the Interior**  
National Park Service

**National Register of Historic Places**  
**Continuation Sheet**

Section number 7 Page 1

Bennett-Field House, Denver, Colorado

**DESCRIPTION**

This two and one-half story house is Neo-Classical Revival in style. The exterior is red Flemish bond brick with stone detailing around the windows. Most of the wood trim is painted white. It lies within the locally designated East 7<sup>th</sup> Avenue Historic District. This symmetrical home sits high off the street on a rise with a series of granite steps leading up to it. From historic photographs and original architectural drawings, it has maintained its original design since 1905, except for a second floor addition to the back porch. The total square footage is 7,658. The house is in good condition due to several repairs to the brick under windows and other stone features. It retains excellent integrity of location, design, setting, materials, workmanship, feeling, and association.

The front (west facing) façade

Six massive giant order fluted round columns support a third-floor balcony centered in the middle bay of the front façade. The white-painted columns are capped off with Ionic capitals and sit on red-painted square bases. There are three columns to the left and three to the right of the porch entry. Against the house are two flat squared-off fluted pilasters on either side of the entry door that are also two stories high. The terrace is made of stone and brick with the brick flanking the vertical sides. There is no railing around the terrace that sits about four steps off the ground. The terrace runs the full width of the house with a floor of small brick-shaped red tiles. The terrace roof is deeply coffered with painted squares. The entry door is flanked on either side by sidelights, divided by wooden curved mullions. Black iron sconces also flank the entry.

Above the large, paneled, front door is a flat segmented brick arch featuring a molded stone keystone and terminated on either end with stone voussoirs. This pattern is repeated over windows and openings throughout the house. There is one window opening on either side of the central bay. The ground floor windows are within a compass-head niche that features a brick relieving segmented arch at the top with a stone keystone and terminated by stone block imposts on either side, with a stone sill at the bottom. The window opening is within the niche with bricks filling in the arch space and bricks framing the sides of the rectangular window. The double-hung wood frame ten-over-ten light window is topped with the previously described flat segmented arch. On either side of the windows remain in situ metal hardware for shutters that are no longer extant.

The second-story balcony over the entry is accessed from the inside through arched French doors. A sidelight extends around the entire door and forms its own second arch. The enclosure forms a compass-head opening that is framed by a brick relieving segmented arch with stone block imposts on either side. The sidelight is divided into small squares with wood mullions in four sections. The floor of this second-story balcony is wood decking, supported by iron brackets that extend out from the brick façade. The brackets feature a complex circular pattern where they attach to the house. A wrought iron railing surrounds the rectangular balcony. There is one window opening on either side of the central bay. These windows are identical to the ground-floor windows minus the compass-head niche.

The third-floor balcony sits several feet above the top of the columns. In between the floor of this balcony and the columns is a wide fascia board with exaggerated dentils above. The dentils are about 4" square and project out in a regular pattern. This detail wraps around the entire front façade of the house. The porch itself has a railing and square wooden balusters separated by evenly spaced larger

**United States Department of the Interior**  
National Park Service

**National Register of Historic Places**  
**Continuation Sheet**

Section number 7 Page 2

Bennett-Field House, Denver, Colorado

---

square wooden piers. The piers have inset panels. The original architectural drawings and earlier photographs, circa 1930s, show these piers lined up with the columns below, and a complex pattern of squares and diamond for the railing. The balustrade may have been replaced sometime in the middle of the twentieth century.

The steeply pitched, side-gabled roof is covered with asphalt shingles. There are three equally spaced pedimented dormers on the principal façade, with red-painted, wood shingle siding. The dormers to either side of the center balcony contain divided light windows. The center dormer contains a rectangular, multi-light, French door for access to the balcony. The roof has an asymmetrical stepped parapet wall on both gable ends. The wall extends beyond the front and back facades, supported by large articulated stone supports.

The house supports three large and highly corbelled brick chimneys. There are two on the north side of the house and one on the south side.

- The south side chimney is centered on this façade. The brick is articulated all the way to the ground and decorated with stone triangles where the chimney narrows above the second floor. A small brick compass-head niche is set into this chimney at the second level. The niche has a stone sill and a brick relieving segmented arch with a stone keystone and stone block imposts.
- The two chimneys on the north side lack niches but have an inset stone triangle at each point where the chimney narrows.

All three chimneys rise well above the top of the roof.

The south-facing façade has symmetrically placed double-hung windows on either side of the chimney at each level of the house. The bottom windows and second floor windows repeat the pattern of windows on the front. The gable end (3<sup>rd</sup> floor) contains smaller double-hung windows that touch the chimney on either side. There is a very subtle brick arch above these upper windows – with half of the arch over one window and the completion over the other. The arch is visible because of vertically placed bricks that traverse the arch. Stone squares anchor the arch to the upper outside edge of each window.

The rear (east-facing façade) contains six asymmetrically placed windows. While two of the windows on the south end maintain the same double-hung ten-over-ten style, they have no arch or keystone patterning. Two double-hung windows on the second level are eight-over-eight lights, one is three-over-three, and over the door is one six-over-six window. This side contains a centered set of French doors off the original Reception Room, with four granite steps leading up to the stoop. The third floor has three dormers set into the roof that matches the placement and materials of those on the front of the house, except the middle dormer is slightly larger (to accommodate the servant's bathroom). These dormers have shed roofs instead of cross gables.

A modified back porch, added sometime after 1928, has newer windows, doors, and a second floor on what used to be an open balcony. This porch is shown as one story on William Fisher's drawings in June of 1905 and up until the last Sanborn map of 1928. Originally the north half of the porch was made of brick to house a pantry. This brick portion had no openings on the east side, with one

**United States Department of the Interior**  
National Park Service

**National Register of Historic Places**  
**Continuation Sheet**

Section number 7 Page 3

Bennett-Field House, Denver, Colorado

---

double-hung window facing north. The southern half was made of wood, had an exterior door to the south, and twelve-light square windows that wrapped around. On top was an open-air porch with a wooden railing.

The current porch is two stories. The south-facing door was filled in with wood. The new square double-hung windows wrap around the southeast corner, with bead-board paneling below. There is a new door facing east. To the right of the door, the porch retains the brick on the first floor with a new east-facing casement multi-paned window. The north-facing window remains as it was originally on the drawings. A new deck wraps around the porch and connects into the garage.

The north façade contains two articulated chimneys as described earlier. There are two large ground floor windows that match the style and type of window found on the front of the house. A set of two smaller windows can be seen on the left. The second story contains two windows on either side that match the second floor windows on the front. In the center of the chimneys on the second and third floors are two matched pairs of double-hung windows with four-over-four lights. One stone keystone is centered over each window. Above the third floor windows is a round louvered opening with four triangular stones equally spaced around the circle.

The interior contains a basement with multiple rooms that originally contained a room for the laundry, a drying room, a boiler room, a pantry cellar, and a play room. The first floor had an entry hall with the staircase, a dining room, pantry, reception room, large living room, and back staircase for servants. The second floor had the hall with the staircase, four bedrooms, and the back staircase for servants. The third floor, only accessible by the back staircase, were two servant bedrooms, one servant bath, a linen closet, a guest room (with balcony) and a large billiard room with a fireplace.

Character defining interior features include:

- A large u-shaped stair with intermediate landing leading to the second floor
- A grand enclosed entry hall with tiled flooring
- A large living room with many built-ins of Fisher's design, including a fireplace, bookcases, and column wrapped windows on the east and west side
- A double column entry into the living room

Alterations

Changes to the original house design include:

- The addition of a period appropriate second story to the rear porch with new windows and doors occurred sometime after 1928 according to Sanborn maps
- The wooden balustrade around the third floor balcony has been redesigned
- A brick garage was added in 1919
- Drawings for a large barn at 740 Clarkson were found in the Fisher Collection at the Denver Public Library. Fisher & Fisher drew them in 1911 for Mr. E.G. Bennett. It's unclear if the barn was ever built. It's shown as approximately 51' x 33'

**United States Department of the Interior**  
National Park Service

**National Register of Historic Places**  
**Continuation Sheet**

Section number 7 Page 4

Bennett-Field House, Denver, Colorado

---

Despite these alterations, the house retains a high level of integrity of location, design, setting, materials, workmanship, feeling, and association.

Garage, 1919 (contributing), photo 20

The garage is one story and the walls are common bond brick, located off the alley in the northeast corner of the property. According to building permits it was constructed in 1919. It is not from the same time period as the house, but it retains a high level of integrity of design, materials, and workmanship. The simple garage features brick corbelling and rowlock, and an original five-panel door with a one-over-one window.

Shed, 1990 (noncontributing)

The contemporary frame shed was built by the current owners as for storage. Located in the extreme southeast corner of the property, it is unobtrusive and does not detract from the integrity of setting, feeling, or association.

Bennett-Field House  
Name of Property

Denver, Colorado  
County/State

## 8. Statement of Significance

### Applicable National Register Criteria

(Mark "X" in one or more boxes for the criteria qualifying the property for National Register listing.)

- A** Property is associated with events that have made a significant contribution to the broad patterns of our history.
- B** Property is associated with the lives of persons significant in our past.
- C** Property embodies the distinctive characteristics of a type, period, or method of construction or represents the work of a master, or possesses high artistic values, or represents a significant and distinguishable entity whose components lack individual distinction.
- D** Property has yielded, or is likely to yield, information important in prehistory or history.

### Criteria Considerations

(Mark "X" in all the boxes that apply.)

Property is:

- A** owned by a religious institution or used for religious purposes.
- B** removed from its original location.
- C** a birthplace or grave.
- D** a cemetery.
- E** a reconstructed building, object, or structure.
- F** a commemorative property.
- G** less than 50 years of age or achieved significance within the past 50 years.

### Narrative Statement of Significance

(Explain the significance of the property on one or more continuation sheets.)

## 9. Major Bibliographical References

### Bibliography

(Cite the books, articles and other sources used in preparing this form on one or more continuation sheets.)

### Previous documentation on file (NPS):

- preliminary determination of individual listing (36 CFR 67) has been requested
- previously listed in the National Register
- previously determined eligible by the National Register
- designated a National Historic Landmark
- recorded by Historic American Buildings Survey

# \_\_\_\_\_

- recorded by Historic American Engineering Record

# \_\_\_\_\_

### Areas of Significance

(Enter categories from instructions)

Architecture

### Periods of Significance

1905-1919

### Significant Dates

1905

1919

### Significant Person(s)

(Complete if Criterion B is marked above.)

N/A

### Cultural Affiliation

N/A

### Architect/Builder

Fisher, William E.

### Primary location of additional data:

- State Historic Preservation Office
- Other State Agency
- Federal Agency
- Local Government
- University
- Other

Name of repository:

Colorado Historical Society

**United States Department of the Interior**  
National Park Service

**National Register of Historic Places**  
**Continuation Sheet**

Section number 8 Page 5

Bennett-Field House, Denver, Colorado

---

**SIGNIFICANCE**

The Bennett-Field House is eligible for the National Register under Criterion C because it embodies distinguishing characteristics of the Neo-Classical Revival style as designed by a significant architect of the time. Because this building is owned by a religious institution and is used for religious purposes, it must meet the burden of Criterion Consideration A, which it does as a property primarily derives its significance for its architectural design. The period of significance is 1905 to 1919, reflecting the first owner constructing the home in 1905 and the second owner constructing the garage in 1919.

This house embodies an excellent example of the Neo-Classical Revival style of architecture, prevalent from 1900 to 1917 in the United States. The distinguishing features of this style are the giant order Ionic columns and entablature, symmetrically balanced windows, center door, and façade division.

The architect, William E. Fisher ran the architectural firm Fisher & Fisher with his brother Arthur A. Fisher. The firm designed many of Denver's best-known landmarks including the Denver City Tramway Building (5DV.117, National Register, July 1979), the Colorado National Bank (5DV.524, April 2010), and the residences of Chester S. Morey, John Evans, Lawrence D. Phipps, and Henry C. Van Schaack. Fisher & Fisher became one of the most influential firms in the Rocky Mountain West by 1920. W.E. Fisher was honored as an A.I.A. Fellow in 1915. In addition, Fisher was the founding member of the Denver Landmark Preservation Commission in 1967. In 1909, Fisher was among ten other architects across the nation invited to enter a design competition for a country house. He won seventh prize. The competition was conducted by *The Delineator*, and underwritten by B.W. Dodge & Company in 1909, out of New York. As noted in the preface to the publication:

It was limited to ten architects, who were allowed to compete only by invitation, and who had prominence in various parts of the United States for designing country houses.

While Fisher originally designed a carriage house for this property, the second owner constructed a modestly ornamented garage in the same location to fulfill an increasingly modern need. The garage marks the emergence of the automobile as the transportation of choice for the elite in the early twentieth century, which changed both the culture and built environment of Denver's urban landscape. This utilitarian building is subservient to the large and ornate house, is not visible from the primary elevation and is located adjacent to the alley that runs behind the property. The simple, utilitarian construction of the garage reflects an intact example of an urban Denver garage, which, given its early date, was for a wealthy individual amongst the first to secure the new transportation technology for personal use.<sup>1</sup>

---

<sup>1</sup> While the increase in automobiles led states on the East Coast to require vehicle registration as early as 1901, the growth of personal automobile ownership reached Colorado more slowly and the state did not require registration until 1913. U.S. Department of Commerce, *Highway Statistics, Summary to 1955* (Washington, DC: Government Printing Office, 1957), 16. James J. Flink, *America Adopts the Automobile, 1895-1910* (Cambridge, MA: MIT Press, 1970), 166-170.



**United States Department of the Interior**  
National Park Service

**National Register of Historic Places**  
**Continuation Sheet**

Section number 8 Page 6

Bennett-Field House, Denver, Colorado

---

**History of the Property and Its Associations**

In 1905, at a time when a modest middle-class house cost around \$1,000 to \$2,000, attorney and investor Edmon G. Bennett arranged for architect William Ellsworth Fisher to construct a \$12,000 manor for him at 740 Clarkson Street. Building permit #2091 of November 18, 1905, specified a residence 40' x 50.2'. Contractor V.W. Brown was the builder. It was only a few years earlier, in 1903, that Mr. Bennett bought the land for 740 Clarkson.

Edmon G. Bennett was a partner in the law firm of Bicksler, McLean & Bennett. His office was in the Equitable Building (5DV.121, National Register, January 1978) in downtown Denver. The Bennetts lived in the house only four years, until 1910. After this, he and his family lived at 1450 Marion Street. In addition to being a successful lawyer, Bennett invested heavily in real estate. In 1901, he arranged for the construction of 731 Clarkson across the street. That residence eventually became the home of Adolph Coors' daughter, Louise Porter.

Bennett had come to Denver from Iowa, where he was born in 1867. He married Eleanor, around 1890. She was born in Kentucky. By the time Edmon and Eleanor moved out of 740 Clarkson, they had been married for 19 years and had two children: Pauline E. (15 years old) and Edmon Jr. (14 years old). Both of the kids had been born in Iowa, prior to moving to Colorado.

Edward Bell Field bought the house from Bennett in 1910. Field was born in Chelsea, Massachusetts in 1850, of parents with strong New England lineages going back to 1623. His mother, Eliza Ann Bell, also had strong roots in Boston dating to 1709. In fact, she was the last person to be buried in the King's Chapel at Boston.

In 1872, Edward Field married Mary Alice Legge in Newton, Massachusetts. She, too, was a member of a prominent New England family represented in the Revolutionary War. Together the Fields had four children: Edward Bell Field, Jr., May Agnes, Martha L., and Grace W. Edward Field had been working in the woolen wholesale business in Boston for fourteen years when he suffered hemorrhages of the lungs (tuberculosis), and was ordered by his doctor to go to Colorado to recover in 1879.

By 1880, Field had recovered enough to take a job as a telephone operator. The *History of Colorado* says Bell's "investigating turn of mind led him to the study of many practical things, and especially to the mechanism of the telephone" while he was a boy in Boston, so he was a natural for the field. He advanced rapidly within the Colorado Telephone Company to eventually become its president. In 1911, he oversaw the merger of seven different telephone systems to create the Mountain States Telephone & Telegraph Company. He was also president of the Denver Philharmonic Association, and active in numerous civic and social organizations in Denver.

In 1880, just after moving to Colorado, the Field family lived at 608 Stout Street (no longer extant). By the time they moved to 740 Clarkson in 1910, they were following the trend of South Denver families moving to the high class Quality Hill section of Denver, where numerous mansions were being built. On this block of Clarkson, in particular, were the residences of the Coors family, Adolph Zang (on land developed by Claude Boettcher), U.S. Senator Thomas Patterson, and the Coors daughter, Louise

**United States Department of the Interior**  
National Park Service

**National Register of Historic Places**  
**Continuation Sheet**

Section number 8 Page 7

Bennett-Field House, Denver, Colorado

---

Porter. In addition, talented architect Robert Roeschlaub designed a home for mining engineer Albert A. Blow in 1892 on this street.

When the Field family moved into 740 Clarkson, Edward was 59, and his wife Mary was 58. Mary Field passed away in 1915. Two years later, a former telephone operator, Miss Henry (32 years old) married Edward who was then 67 years old. The second marriage didn't last long because Edward Field died in February of 1919. Field's widow survived until 1930. She was among those who helped restore the Central City Opera House. After Edward's death, the grown children gained control of the house as per the will and lived there until selling the house to John and Mary Baird in 1922.

In the years between 1922 and 1972, five different owners owned the house. Subsequent owners include: Carl Leland Modesitt (1922-1932) who oversaw the development of much of the Rocky Mountain potash industry; Sun Life Assurance Company of Canada (1932-1936); Theodore C. Hitchings, a Denver real estate maven (1936-1940); Alfred Holland, the area manager for Ingersoll-Rand Company (1940-1968); and, Robert G. & Patricia Cunningham who ran Cunningham Development.

The Order of Christ Centered Ministries bought the house in 1972, after being next door at 750 Clarkson for six years. The Bennett-Field House became the Priory House of the Order which describes itself as a "microcosm of the church," a place of prayer, a center for contemplative living, and an abode where residents can reflect, study, and act to improve the community. In 1990, the national Episcopalian authorities regularized the Order of Christ Centered Ministries as part of the church upon the recommendation of Episcopal Bishop Frey. While open to all believers and all faiths, it primarily draws Episcopalians and Catholics. Run by the Very Reverend Dr. David Forbes Morgan, and his wife Delores, the ownership of the house has remained the same for the last 37 years. For 20 years, Dr. Morgan and Delores also worked at St. John's Cathedral in Denver where Dr. Morgan was Canon Pastor for 14 years.

**United States Department of the Interior**  
National Park Service

**National Register of Historic Places**  
**Continuation Sheet**

Section number 9 Page 8

Bennett-Field House, Denver, Colorado

---

**BIBLIOGRAPHY**

Building and Neighborhood History Collection, Denver Public Library, Denver, CO.

Flink, James J. *America Adopts the Automobile, 1895-1910*. Cambridge, MA: MIT Press, 1970.

Fisher Collection, Denver Public Library, Denver, CO.

Goodstein, Phil. *The Ghosts of Denver*. Denver: New Social Publications, 1996.

\_\_\_\_\_. *Short History of 740 Clarkson*. Denver: n.p., 2008.

McAlester, Virginia & Lee. *A Field Guide to American Houses*. New York: Alfred A. Knopf, 2005.

Morgan, Very Reverend Dr. David Forbes, director of Order of Christ Centered Ministries. Interview with author. April, 2009.

Noel, Thomas. *Mile High City: An Illustrated History of Denver*. Denver: Heritage Media Corporation, 1997.

Noel, Thomas J. and Norgren, Barbara S. *Denver: The City Beautiful*. Denver: Historic Denver Inc., 1987.

Stone, Wilbur Fisk, ed. *History of Colorado*, Vol. 11. Denver: S.J. Clarke Publishing Co., 1918.

U.S. Department of Commerce, *Highway Statistics, Summary to 1955*. Washington, DC: Government Printing Office, 1957.

Widmann, Nancy L. *The East 7<sup>th</sup> Avenue Historic District*. Denver: Historic Denver Guides, 2006.

Wilk, Diane. *A Guide to Denver's Architectural Styles and Terms*. Denver: Historic Denver Guides, 1995.

Bennett-Field House  
Name of Property

Denver, Colorado  
County/State

## 10. Geographical Data

**Acreage of Property** less than one acre

### UTM References

(Place additional UTM references on a continuation sheet.)

1. 13 501994 4397336 (NAD27)

Zone Easting Northing

2. Zone Easting Northing

3. Zone Easting Northing

4. Zone Easting Northing

The UTM reference point was derived from heads up digitization on Digital Raster Graphic (DRG) maps provided to OAHP by the U.S. Bureau of Land Management.

[ ] See continuation sheet

### Verbal Boundary Description

(Describe the boundaries of the property on a continuation sheet.)

### Boundary Justification

(Explain why the boundaries were selected on a continuation sheet.)

## 11. Form Prepared By

name/title Jon R. Hindlemann, Architect (for property owner)

organization Hindlemann Architecture LLC

date February 13, 2010

street & number 1501 Wazee Street Ste. 1-C

telephone 303-623-1010

city or town Denver

state CO

zip code 80202

## Additional Documentation

Submit the following items with the completed form:

### Continuation Sheets

#### Maps

A **USGS map** (7.5 or 15 minute series) indicating the property's location.

A **Sketch map** for historic districts and properties having large acreage or numerous resources.

### Photographs

Representative **black and white photographs** of the property.

### Additional Items

(Check with the SHPO or FPO for any additional items)

## Property Owner

(Complete this item at the request of SHPO or FPO.)

name Christ Centered Evangelism Inc.

street & number 740 Clarkson

telephone 303-832-7309

city or town Denver

state CO

zip code 80218

**Paperwork Reduction Act Statement:** This information is being collected for applications to the National Register of Historic Places to nominate properties for listing or determine eligibility for listing, to list properties, and to amend existing listings. Response to this request is required to obtain a benefit in accordance with the National Historic Preservation Act, as amended (16 U.S.C. 470 *et seq.*)

**Estimated Burden Statement:** Public reporting burden for this form is estimated to range from approximately 18 hours to 36 hours depending on several factors including, but not limited to, how much documentation may already exist on the type of property being nominated and whether the property is being nominated as part of a Multiple Property Documentation Form. In most cases, it is estimated to average 36 hours per response including the time for reviewing instructions, gathering and maintaining data, and completing and reviewing the form to meet minimum National Register documentation requirements. Direct comments regarding this burden estimate or any aspect of this form to the Chief, Administrative Services Division, National Park Service, 1849 C St., NW, Washington, DC 20240.

**United States Department of the Interior**  
National Park Service

**National Register of Historic Places**  
**Continuation Sheet**

Section number 10 Page 9

Bennett-Field House, Denver, Colorado

---

**GEOGRAPHICAL DATA**

**VERBAL BOUNDARY DESCRIPTION**

Lots 12 to 14, inclusive Block 181, Fletchers Capitol Hill Addition to Denver, City and County of Denver, State of Colorado, containing 9375 square feet or 0.21522 acres.

**BOUNDARY JUSTIFICATION**

The nomination includes property legally and historically associated with the Bennett-Field House at 740 Clarkson in Denver.

**United States Department of the Interior**  
National Park Service

**National Register of Historic Places**  
**Continuation Sheet**

Section number      Page 10

Bennett-Field House, Denver, Colorado

**PHOTOGRAPH LOG**

The following information pertains to all photograph numbers except as noted:

Photographer: David Morgan, Denver, CO

Date of Photographs: February 12<sup>th</sup> & 13<sup>th</sup>, 2010

Negatives: Digital Files – Printed with approved combination of Epson UltraChrome pigmented inks and Epson Enhanced Matte Paper, Tiff images on file with the National Register, Washington, DC

Property: The Bennett-Field House, 740 Clarkson St., Denver, CO 80218

Photo No.	Photographic Information
001	1 <sup>st</sup> Floor – Parlor, Entire room – camera facing East
002	1 <sup>st</sup> Floor – Parlor, Fireplace mantle and built-ins by William Fisher - camera facing South
003	1 <sup>st</sup> Floor – Parlor, Fireplace mantle and built-ins – camera facing South East
004	1 <sup>st</sup> Floor – Parlor, Corner built-ins and column detail – camera facing South East
005	1 <sup>st</sup> Floor – Parlor, Column detail – camera facing East
006	1 <sup>st</sup> Floor – Parlor, Columns framing window – camera facing East
007	1 <sup>st</sup> Floor – Double wrap staircase - camera facing South West
008	1 <sup>st</sup> Floor – Double wrap staircase - camera facing West
009	1 <sup>st</sup> Floor – Staircase banister detail 1
010	1 <sup>st</sup> Floor – Staircase banister detail 2
011	1 <sup>st</sup> Floor – Interior entryway – camera facing West
012	1 <sup>st</sup> Floor – Parlor door – camera facing South
013	1 <sup>st</sup> Floor – Staircase banister detail 3
014	2 <sup>nd</sup> Floor – Staircase banister and French doors to Juliette balcony - camera facing West
015	2 <sup>nd</sup> Floor – Staircase banister and open French doors to Juliette balcony
016	1 <sup>st</sup> Floor exterior entry portico with columns & Juliette balcony – camera facing West
017	1 <sup>st</sup> Floor exterior window & brick detailing – camera facing East
018	1 <sup>st</sup> Floor exterior entry portico and view of 2 <sup>nd</sup> story balcony ceiling – camera facing East
019	South facing façade, niche and windows – camera facing North East
020	Exterior garage circa 1919 – camera facing North East
021	Rear exterior with 2 <sup>nd</sup> story addition – camera facing North West
022	North facing façade – camera facing South East
023	Exterior Ionic capital and ceiling detail 1 – camera facing South West
024	Exterior Ionic capital detail 2 – camera facing South West
025	View of South West façade – camera facing North East
026	View of West facing façade – camera facing East
027	Detail of West facing façade – camera facing East
028	1 <sup>st</sup> Floor living room door opening into interior entryway – camera facing South West
029	3 <sup>rd</sup> Floor dormer and built-ins – camera facing East
030	3 <sup>rd</sup> Floor wooden beam ceiling detail
031	Exterior column base located at front - detail 1 – camera facing South East
032	Exterior column base attached to façade - detail 2 – camera facing South East

**United States Department of the Interior**  
National Park Service

**National Register of Historic Places**  
**Continuation Sheet**

Section number \_\_\_ Page 11

Bennett-Field House, Denver, Colorado

---

**Historic Images**

All historic images are the 1911 architectural plans designed by Fisher & Fisher for E.G. Bennett. Images are from the Fisher Collection at the Denver Public Library.

Image No.                      Image Information

---

H0001	Basement Floor Plan
H0002	First Floor Plan
H0003	Second Floor Plan
H0004	Third/Attic Floor Plan
H0005	West Elevation
H0006	South Elevation
H0007	North Elevation
H0008	East Elevation
H0009	Interior Decorative Finishes

United States Department of the Interior  
National Park Service

National Register of Historic Places  
Continuation Sheet

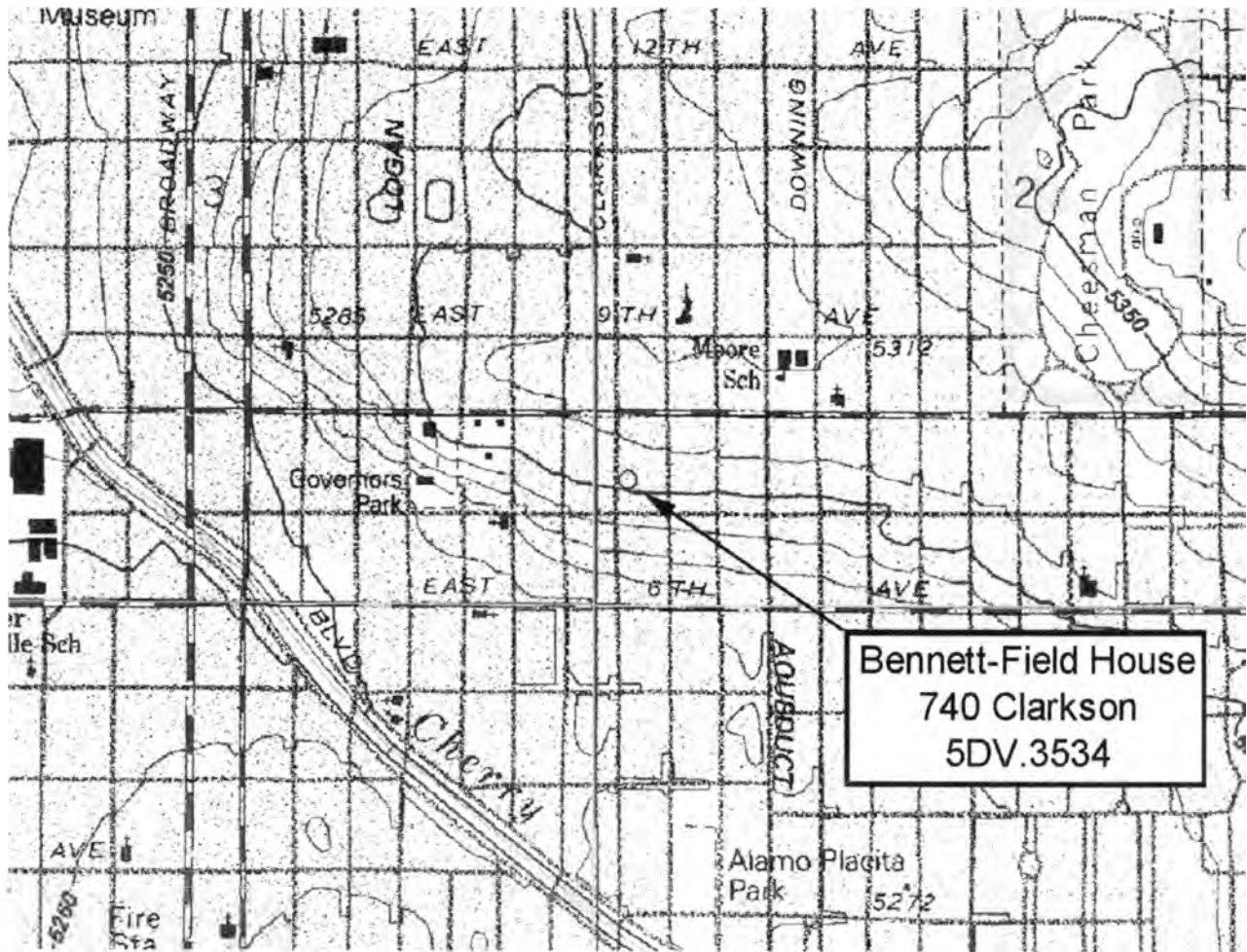
Section number      Page 12

Bennett-Field House, Denver, Colorado

USGS Map

Englewood Quadrangle, Colorado  
7.5 Minute Series

UTM: 13 501944E 4397336 N  
PLSS: 6<sup>th</sup> PM, 4S TN, 68 W RW, 2 Sec.  
¼ SW ¼ NW ¼ SW ¼ SW





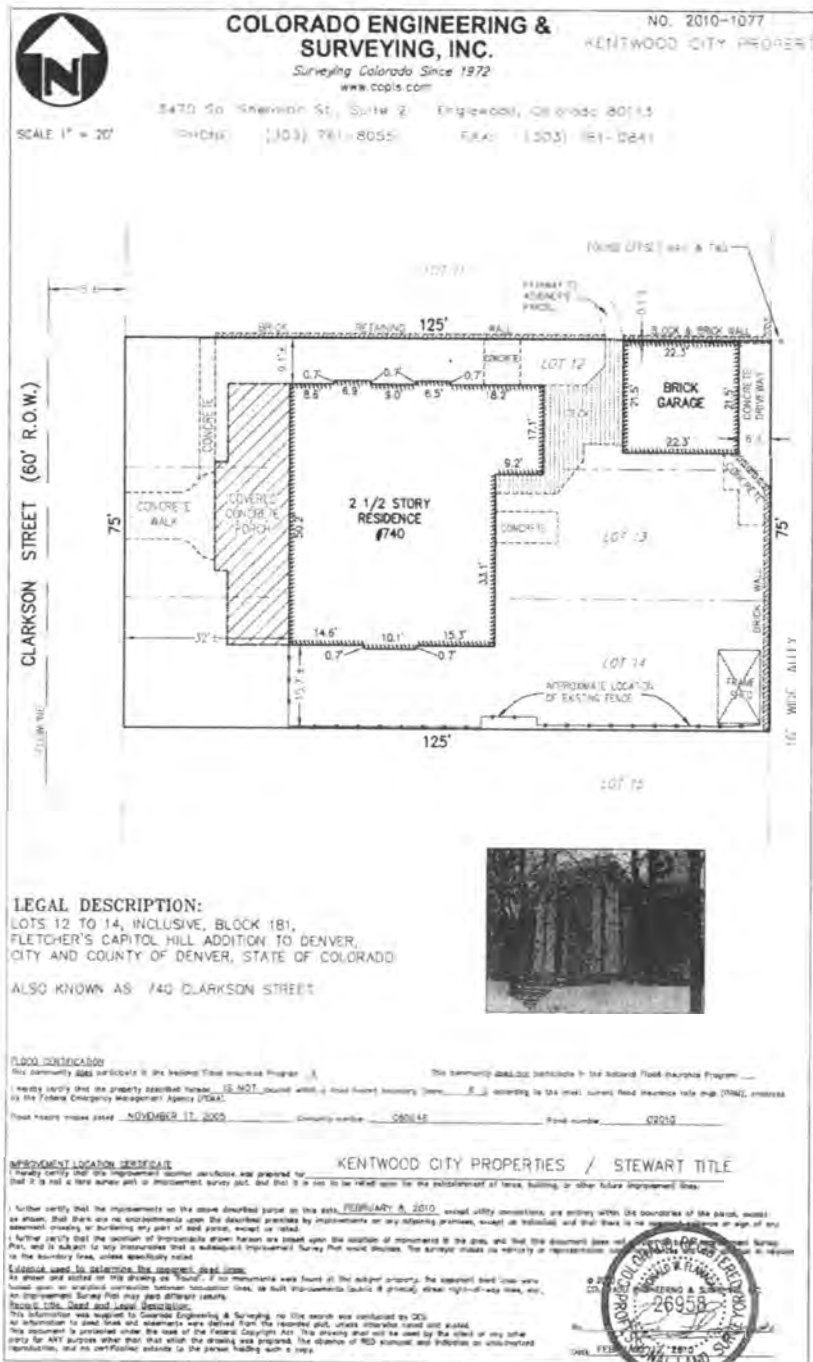
United States Department of the Interior  
National Park Service

National Register of Historic Places  
Continuation Sheet

Section number      Page 13

Bennett-Field House, Denver, Colorado

Sketch Map



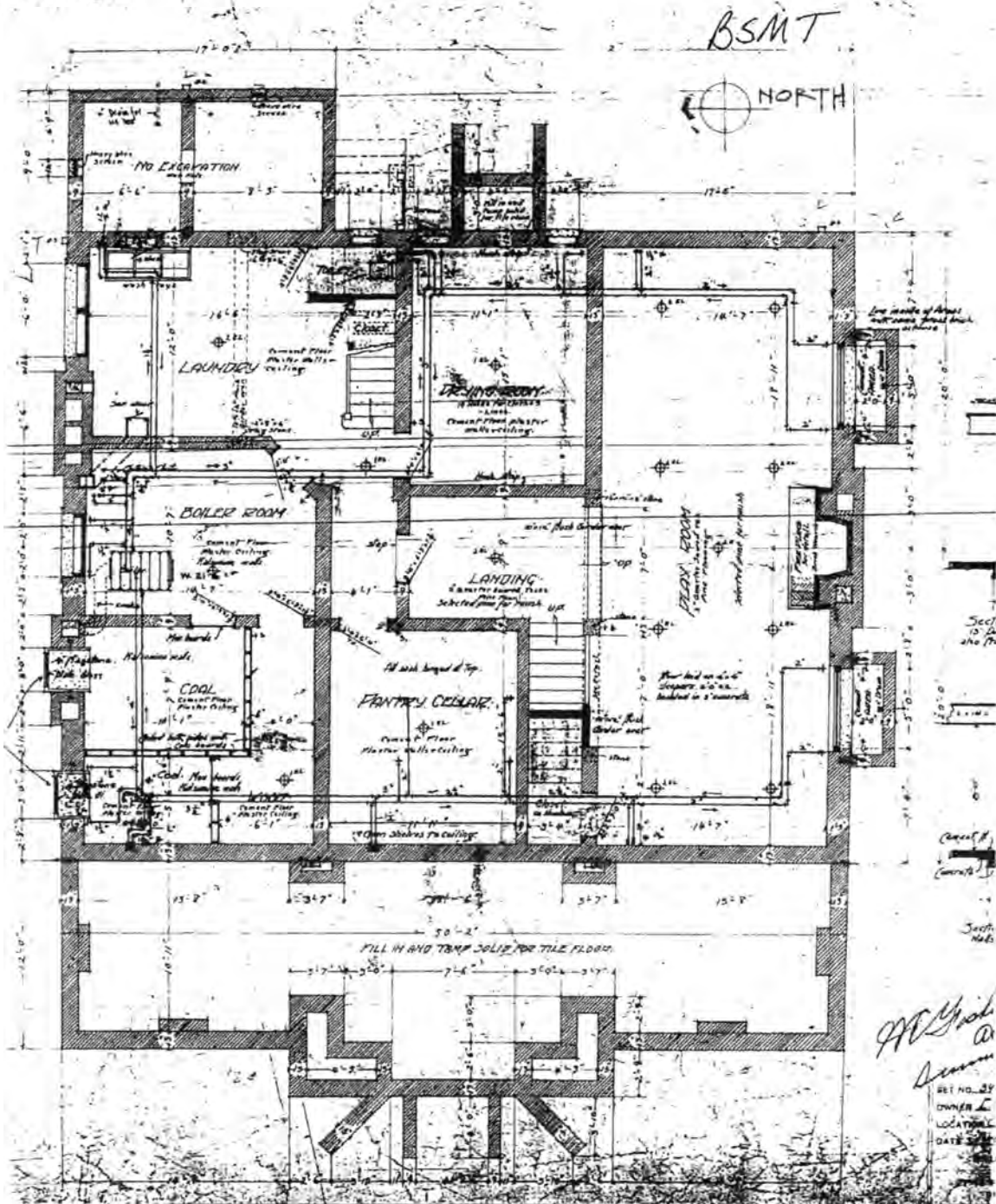
United States Department of the Interior  
National Park Service

National Register of Historic Places  
Continuation Sheet

Section number      Page 14

Bennett-Field House, Denver, Colorado

Historic Images



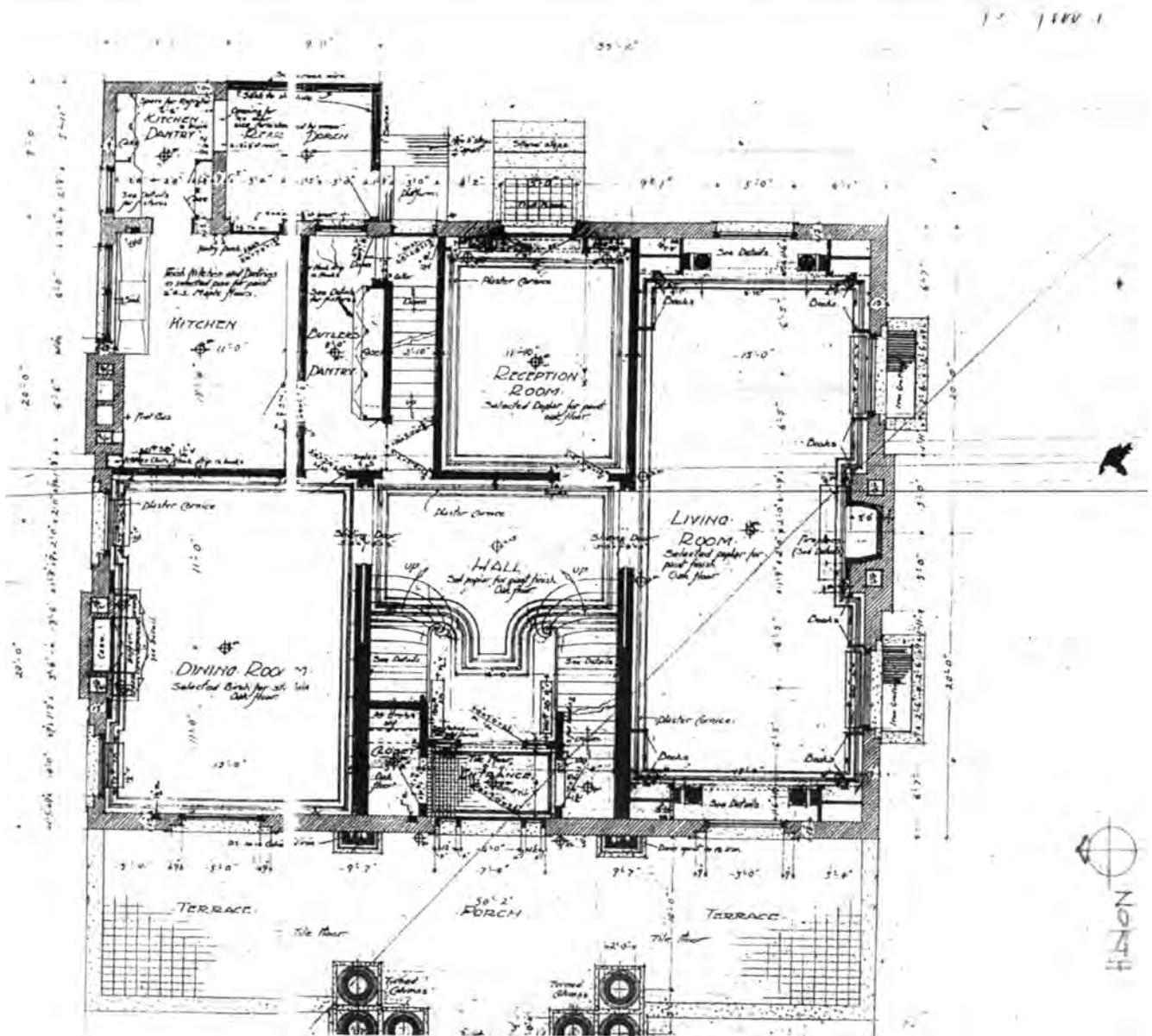
H0001. Basement Floor Plan

United States Department of the Interior  
National Park Service

National Register of Historic Places  
Continuation Sheet

Section number \_\_\_ Page 15

Bennett-Field House, Denver, Colorado



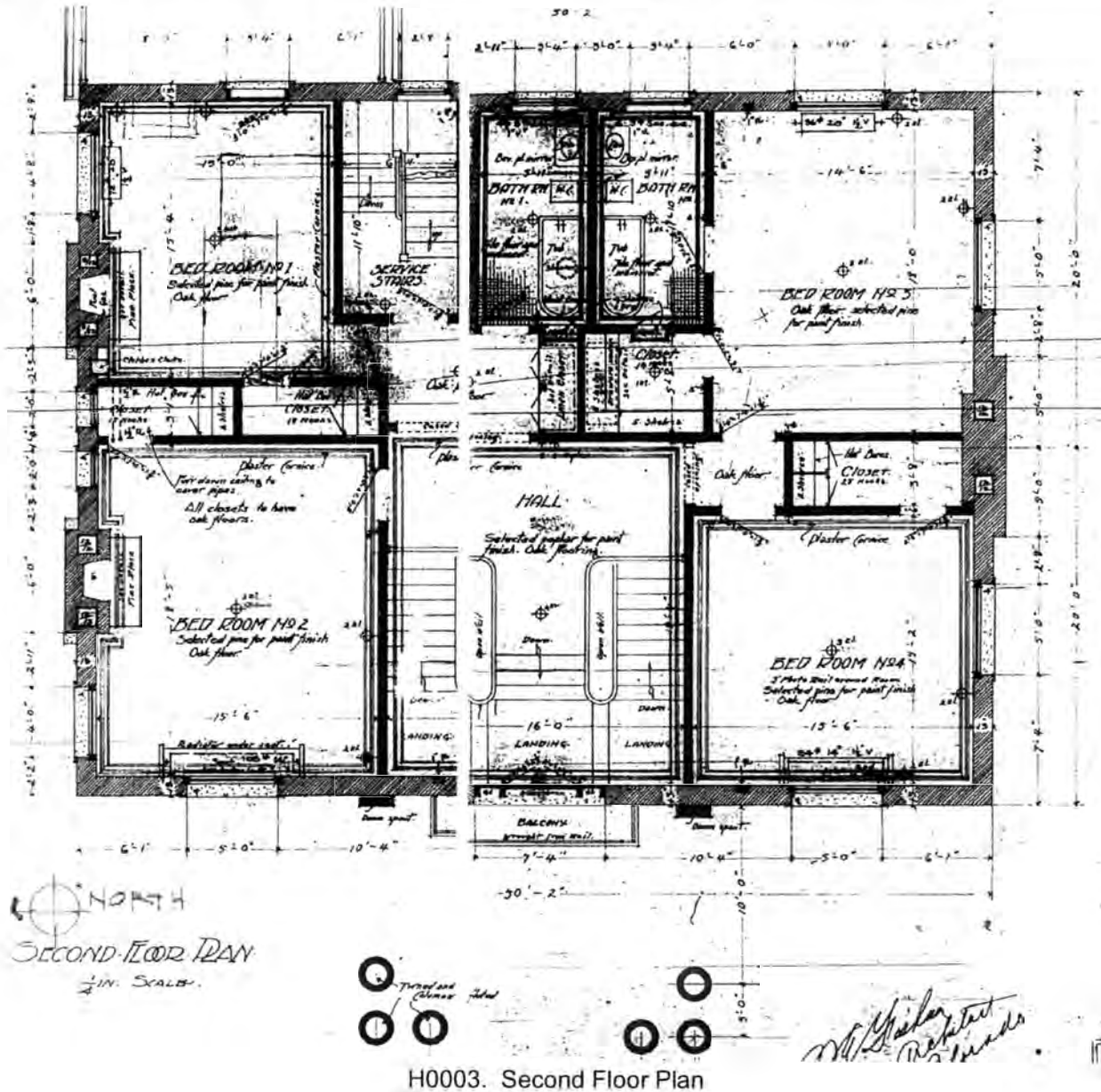
H0002. First Floor Plan

United States Department of the Interior  
National Park Service

National Register of Historic Places  
Continuation Sheet

Section number \_\_\_ Page 16

Bennett-Field House, Denver, Colorado

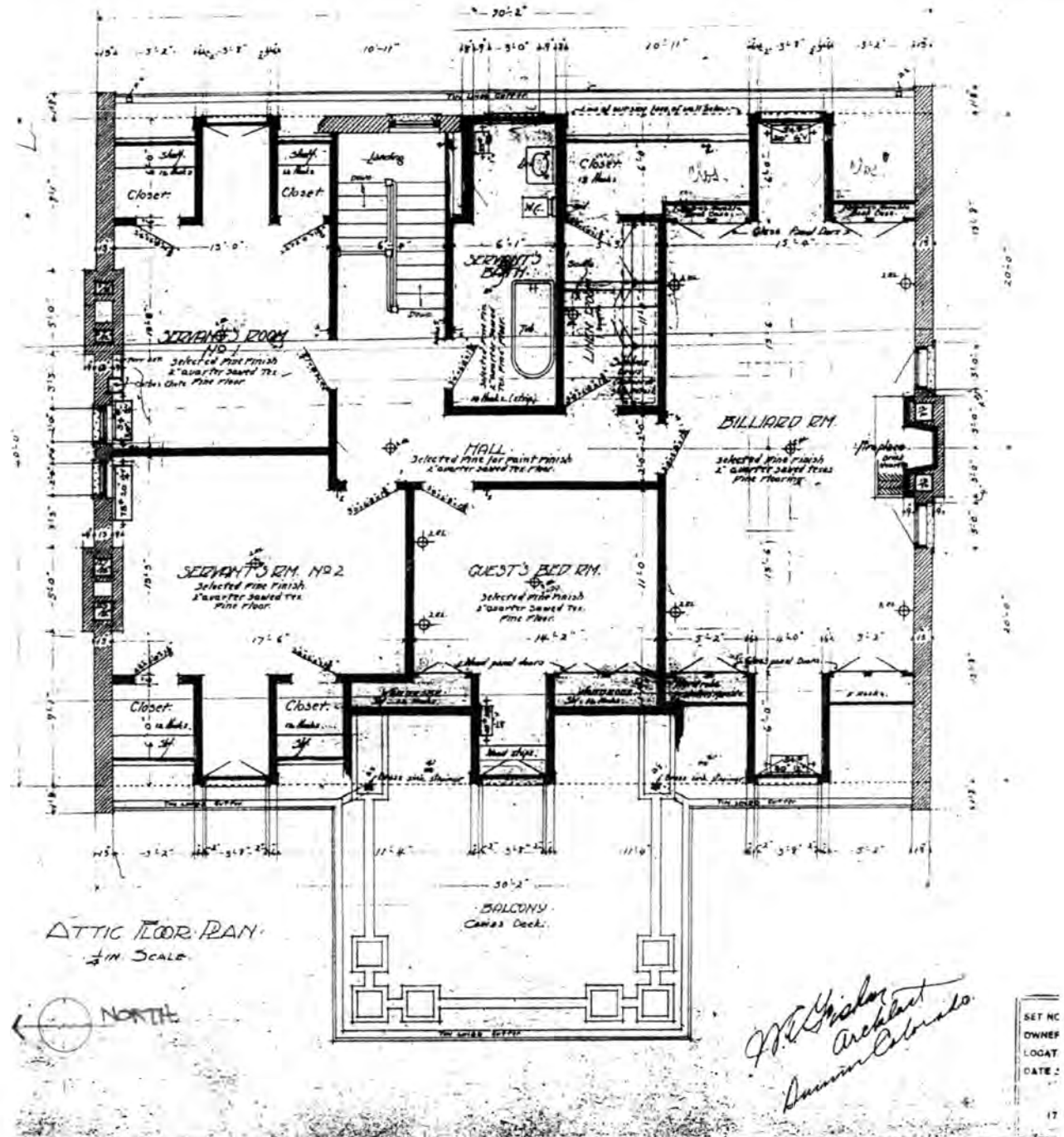


United States Department of the Interior  
National Park Service

National Register of Historic Places  
Continuation Sheet

Section number \_\_\_ Page 17

Bennett-Field House, Denver, Colorado



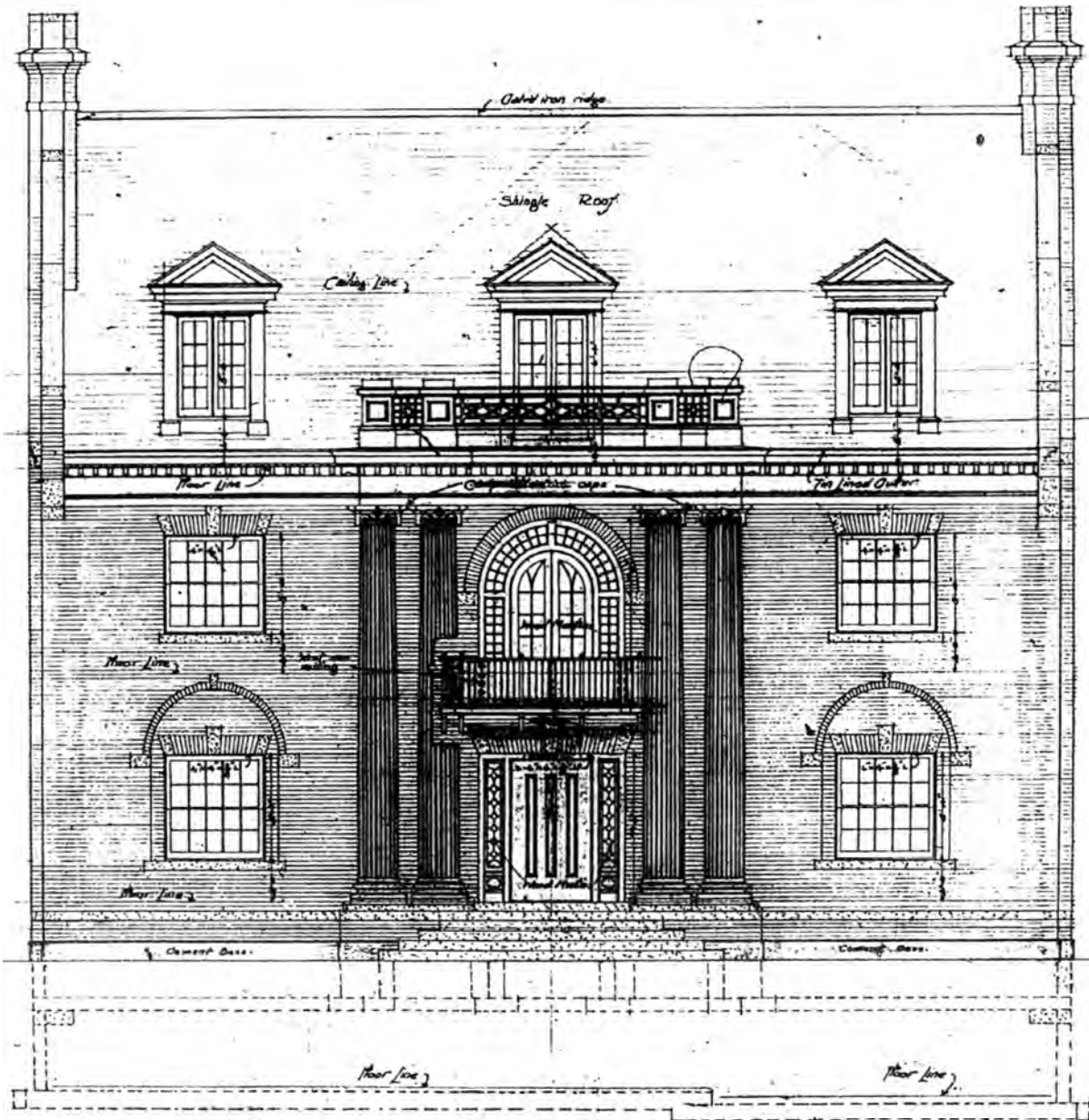
H0004. Third/Attic Floor Plan

United States Department of the Interior  
National Park Service

National Register of Historic Places  
Continuation Sheet

Section number \_\_\_ Page 18

Bennett-Field House, Denver, Colorado



FRONT ELEVATION WEST.  
1/4 IN. SCALE.

*A. H. Fisher*  
Architect  
Denver Colorado

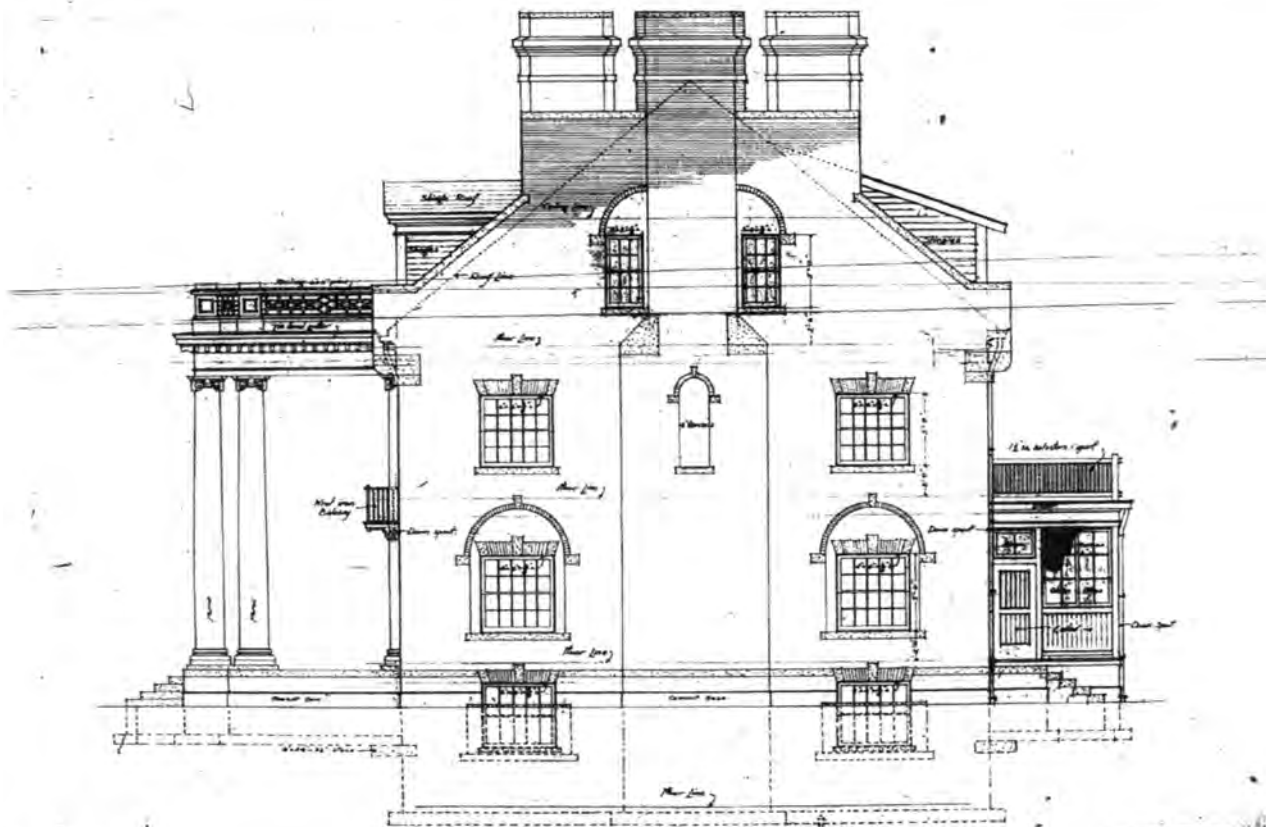
H0005. West Elevation



United States Department of the Interior  
National Park Service

National Register of Historic Places  
Continuation Sheet

Section number      Page 19

Bennett-Field House, Denver, Colorado



 Brick  
 Stone

SOUTH ELEVATION  
1/4" SCALE

*W. Fisher  
Richard Blum*

SET NO. 222  
OWNER L.P. ...  
LOCATION ...  
DATE ...

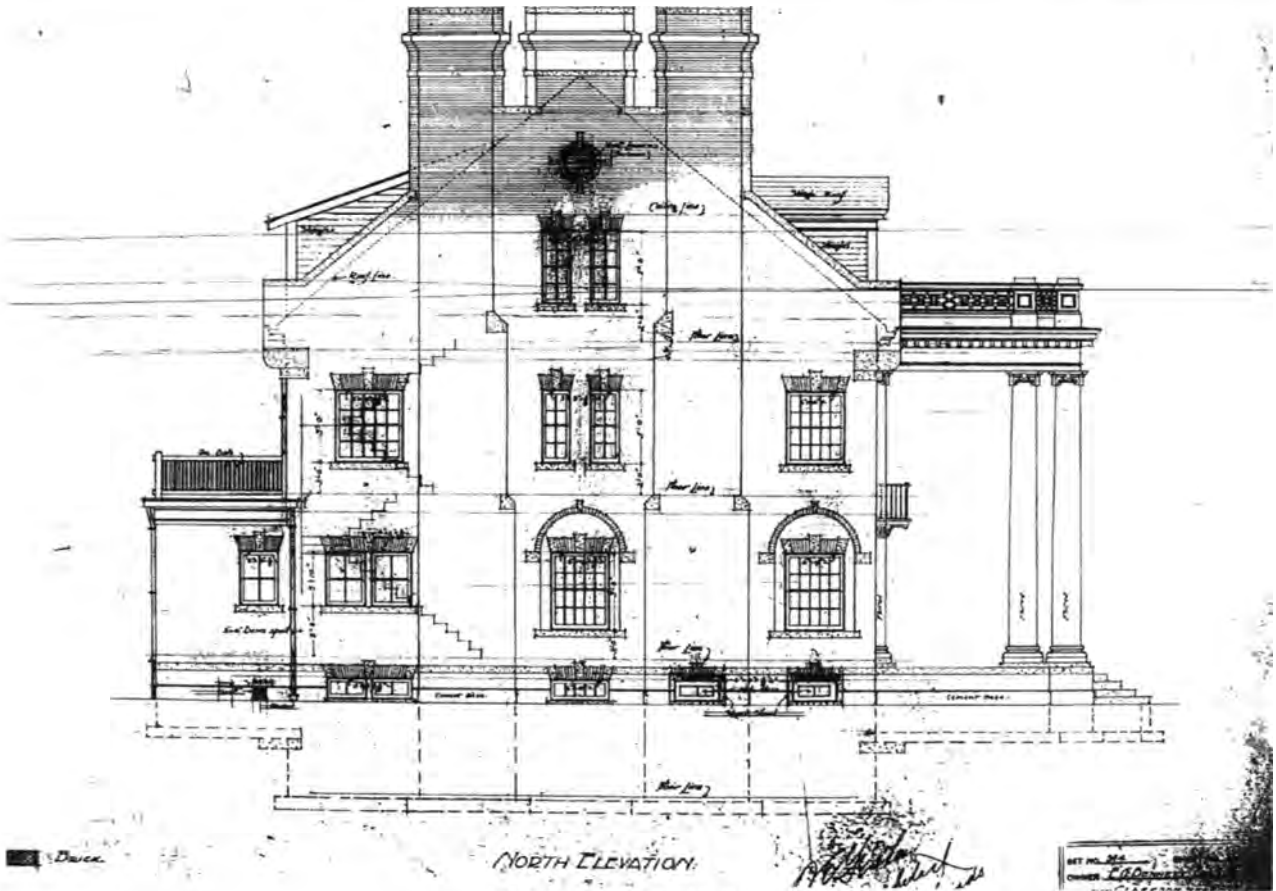
H0006. South Elevation

United States Department of the Interior  
National Park Service

National Register of Historic Places  
Continuation Sheet

Section number \_\_\_ Page 20

Bennett-Field House, Denver, Colorado



NORTH ELEVATION

H0007. North Elevation

SET NO. 25  
OWNER LADSON

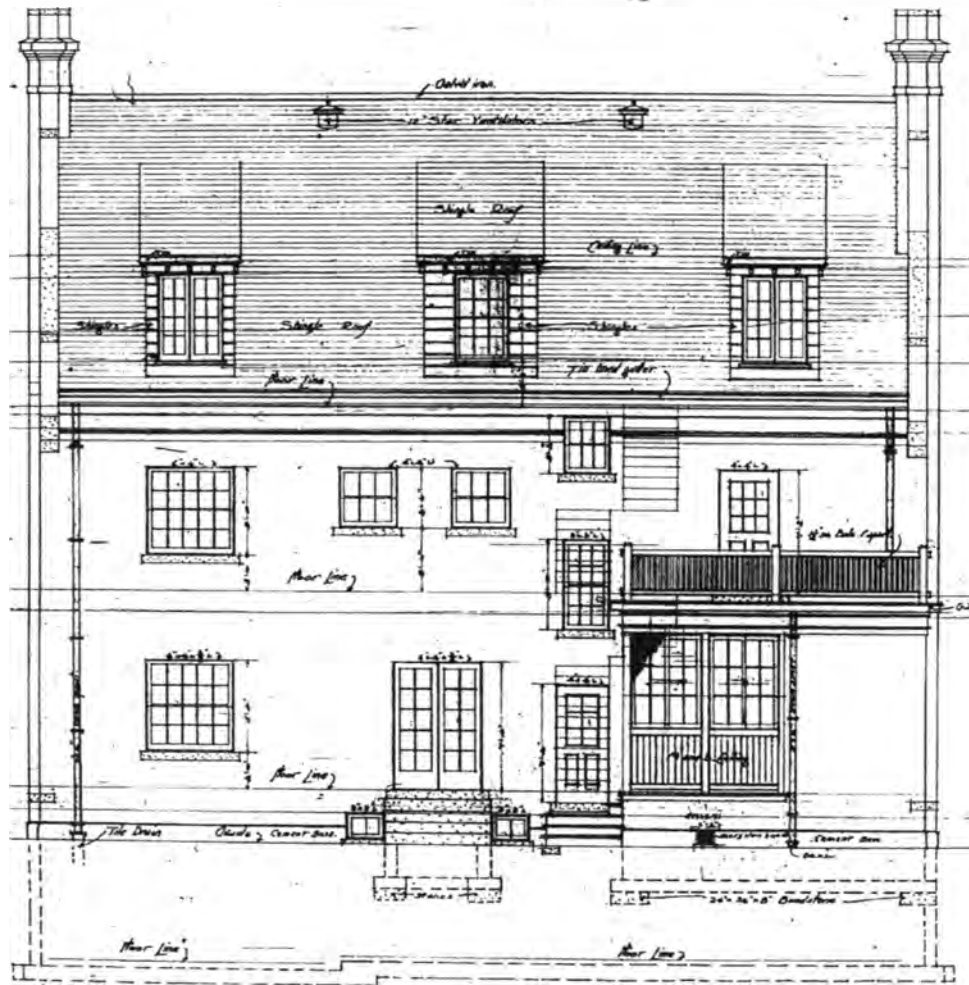


United States Department of the Interior  
National Park Service

National Register of Historic Places  
Continuation Sheet

Section number \_\_\_ Page 21

Bennett-Field House, Denver, Colorado



REAR ELEVATION EAST  
1/4" SCALE

*M. H. ... Architect  
Alameda*

H0008. East Elevation

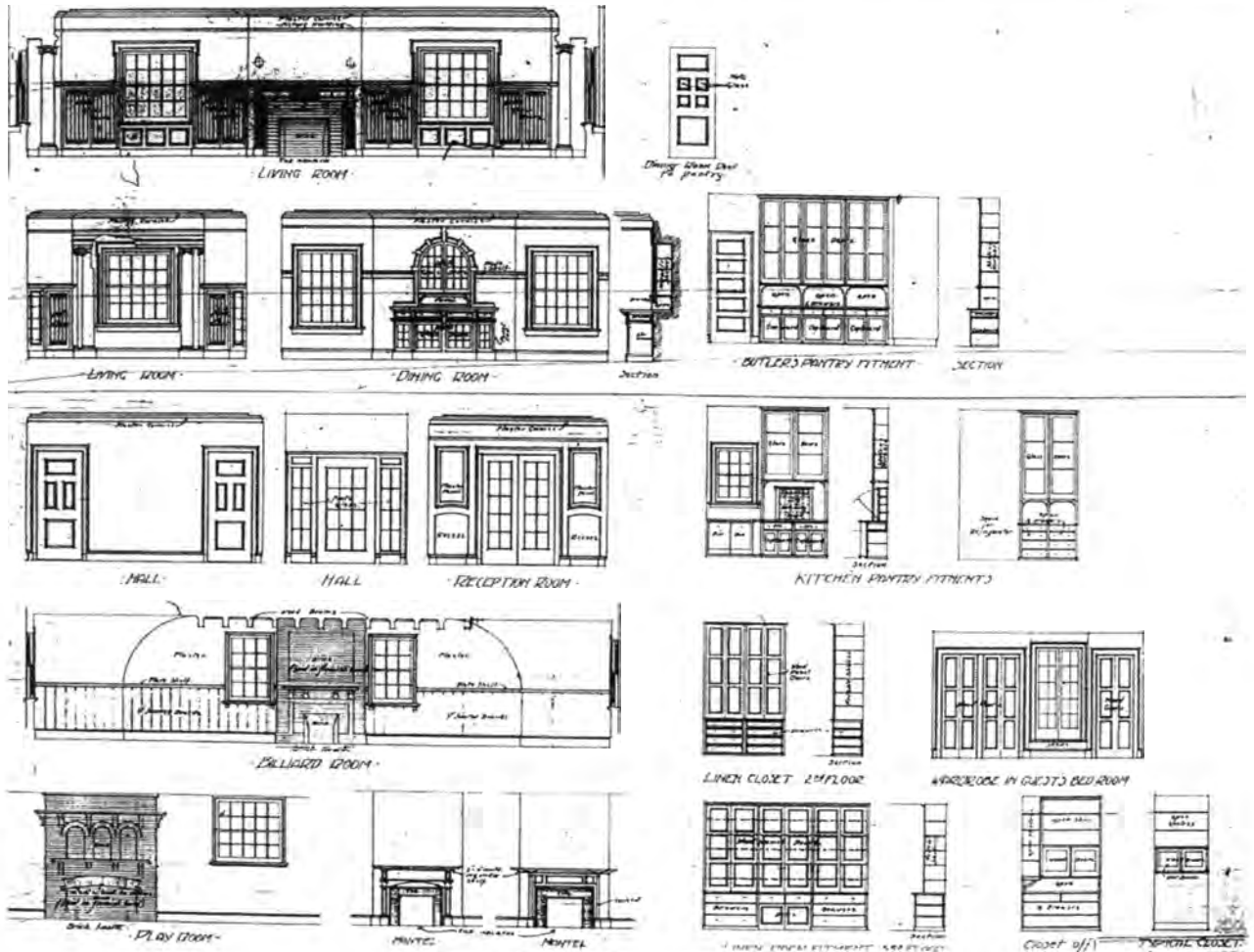
KEY NO. 324	SHEET NO. 21
OWNER L. B. Denver	
LOCATION Colorado	
DATE June 19, 1907	

United States Department of the Interior  
National Park Service

National Register of Historic Places  
Continuation Sheet

Section number \_\_\_ Page 22

Bennett-Field House, Denver, Colorado



H0009. Interior Decorative Finishes

**United States Department of the Interior**  
National Park Service

**National Register of Historic Places**  
**Continuation Sheet**

Section number      Page 23

Bennett-Field House, Denver, Colorado

**William E. Fisher Credited Buildings**

In addition to the Bennett-Field House and the other buildings mentioned in Section 8 of this nomination, William E. Fisher (and the firms he represented over the years) was the architect of record for the following buildings:

Building Name	Location	Site No.	Date	Assessment
<b>William Fisher, Architect (1892-1901)</b>				
Unnamed House	1763 High St., Denver	5DV2749	1893	
Unnamed House	1364 Franklin St., Denver		1895	Wyman Local HD
Unnamed House	1455 Gaylord St., Denver		1895	Demolished
Reed House	1040 Humboldt St., Denver	5DV166.7	1899	Humboldt St. HD
Iliff House	2145 S. Adams, Denver	5DV433	1899	
McDonald House	1800 Gilpin St., Denver	5DV2451	1899	
<b>Fisher &amp; Huntington (1901-1905)</b>				
Smith House	1801 York St., Denver	5DV907	1902	National Register
Unnamed House	1368 Gaylord St., Denver		1902	Wyman Local HD
Unnamed House	1345 Race St., Denver		1902	Wyman Local HD
Unnamed House	2202 E. 14th, Denver		1902	Wyman Local HD
Mulvihill-Gurtler House	4209 W. 38th Ave., Denver	5DV636	1904	
Unnamed House	1133 E. 3rd Ave., Denver	5DV6338	1905	
<b>William Fisher, Architect (1905-1907)</b>				
Fred A. Thompson HOUSE (Cheesman Park book credits both W. Fisher and A. Fisher as architects)	801 Humboldt St., Denver		1905	

**United States Department of the Interior**  
National Park Service

**National Register of Historic Places**  
**Continuation Sheet**

Section number      Page 24

Bennett-Field House, Denver, Colorado

Fred A. Thompson House (Cheesman Park book credits both W. Fisher and A. Fisher as architects)	809 Humboldt St., Denver		1905	
Uriah Hellister House	103 Franklin St., Denver	5DV167	1906	Country Club HD
West House	100 Franklin St., Denver	5DV167	1906	Country Club HD
<b>William Fisher Architect and Brother (1907-1910)</b>				
Durango Public Library	1188 E. Second St., Durango	5LP.3037	1907	Local Landmark
Sullivan-Cosgriff House	1130 E. 7th Ave., Denver	5DV344	1907	
Bethuel Webster House	370 Humboldt St., Denver	5DV167	1907	Country Club HD
Unnamed Apartment Building	820 Humboldt St./1515 E. 8th Ave., Denver		1908	
Warren United Methodist Church	1630 E. 14th Ave., Denver		1908	Wyman Local HD
Liva Kountze Brown House	135 Humboldt St., Denver	5DV167	1908	Country Club HD
Arthur Fisher House	128 Gilpin St., Denver	5DV167.14	1909	County Club HD
National Safety Vault Co.	1536 Welton St., Denver	5DV501	1909	Demolished
St. Stephens Episcopal Church	2552 Williams St., Denver	5DV7024	1909	
Parker House	120 Franklin St., Denver	5DV167	1909	County Club HD
Wolff Manufacturing Company Building (Rockmount Ranch Wear Building)	1626 Wazee St., Denver	5DV47.16	1909	Lower Downtown Certified HD
<b>William E. Fisher and Arthur A. Fisher, Architects (1910-1937)</b>				
William E. Fisher House	110 Franklin St., Denver	5DV167	1910	County Club HD
Railway Exchange Building (Addition)	1715 Champa St., Denver	5DV526	1910	National Register
Denver City Tramway Building	1100 14th St., Denver	5DV140	1911	National Register
A.C. Foster Building	912 16th St., Denver	5DV142	1911	National Register
Isaac Solomon Synagogue, Jewish Consumptives' Relief Society	6401 W. Colfax Ave., Lakewood	5JF178	1911	National Register
Wright House	345 Gilpin St., Denver	5DV167	1911	Country Club HD

**United States Department of the Interior**  
National Park Service

**National Register of Historic Places**  
**Continuation Sheet**

Section number \_\_\_ Page25

Bennett-Field House, Denver, Colorado

Katherine Wolcott Toll House	919 Race St., Denver		1912	
Blount House	314 Lafayette St., Denver	5DV167	1912	Country Club HD
J.C. Penney Building	21-39 Broadway, Denver	5DV60	1912	
Unnamed Building	2-10 Broadway, Denver	5DV58	1912	
Bethuel Webster House	140 Humboldt St., Denver	5DV167	1912	Country Club HD
Unnamed Bank Building	2239 E. Colfax Ave., Denver		1913	Demolished
McPhee & McGinnity Building	2301 Blake St., Denver	5DV1490	1913	National Register
Lafayette Hughes-William V. Hodges House	300 High St., Denver	5DV167	1913	Country Club HD
Railway Exchange Building (Addition)	1715 Champa St., Denver	5DV526	1913	Champa Street HD
Broadway National Bank Building	100 Broadway, Denver	5DV54	1914	
Colonel William E. Hughes-Gerald Hughes House	320 High St., Denver	5DV167	1914	Country Club HD
Abbott House	160 Downing, Denver	5DV167	1915	Country Club HD
Colorado National Bank Building	900-918 17th St., Denver	5DV524	1915	
Foster-Buell Mansion	2700 E. Hampden, Englewood	5AH222	1915	
Lorraine Lodge/Charles Boettcher Summer Home	900 Colorow Rd., Golden	5JF323	1916	National Register
H.C. Van Schaack House	323 High St., Denver	5DV167	1916	Country Club HD
McCartney House	350 Gilpin St., Denver	5DV167	c. 1916	Country Club HD
Weicker Transfer	1700 15th St., Denver	5DV47.43	1918	Denver Local Landmark
Daniel A. Millet House	860 Vine St., Denver		1919	Morgan's Subdivision Local HD
McPhee & McGinnity Building (addition)	2301 Blake St., Denver	5DV1490	1919	National Register
Holloway-McKenzie House	180 Lafayette, Denver	5DV167	1920	Country Club HD
U.S. National Bank/Guaranty Bank Building	817 17th St., Denver	5DV843.16	1920	National Register

**United States Department of the Interior**  
National Park Service

**National Register of Historic Places**  
**Continuation Sheet**

Section number \_\_\_ Page26Bennett-Field House, Denver, Colorado

Green House	149 Gilpin St., Denver	5DV167.15	1921	Country Club HD
Morey Middle School	840 E. 14 <sup>th</sup> Ave., Denver	5DV2090	1921	Denver Local Landmark
Voorhies Memorial, Civic Center West	Colfax & 15 <sup>th</sup> St., Denver	5DV161	1921	Civic Center HD
Acacia Apartments	429 E. 14 <sup>th</sup> Ave., Denver		1922	
Bernard Apartments	850 Humboldt St., Denver		1923	
The Waldman Apartments	1515 E. 9 <sup>th</sup> Ave., Denver	5DV2116	1923	
Company town of Parco (Sinclair)	Wyoming		1923-25	
Kuykendall House	380 High, Denver	5DV167	1924	Country Club HD
Neusteter Department Store	720-726 16 <sup>th</sup> St., Denver	5DV496	1924	National Register
Lion Hotel	1425-1433 Welton St., Denver	5DV1817	1924	
Wildo Building	1441 Welton St., Denver	5DV1826	1924	
Denver Country Club, Clubhouse (remodel)	First Ave. & University	5DV167	1925	Country Club HD
University of Colorado School of Medicine and Hospital	4200 E. 9 <sup>th</sup> Ave., Denver	5DV935	1925	
Weicker Warehouse	2100 E. Colfax, Denver	5DV716	1925	
Midland Savings Building	444 17 <sup>th</sup> St., Denver	5DV1733	1926	State Register
South High School	1700 E. Louisiana Ave., Denver	5DV2092	1926	
Presbyterian Hospital	Denver		1926	
B'nai B'rith Infirmary for National Jewish Hospital	Colorado Blvd. & E. Colfax Ave., Denver		1926	
Jewish Consumptives' Relief Society Max D. Neuster Rehabilitation Building	6401 W. Colfax Ave., Lakewood	5JF178	1926	National Register
YWCA Building	1535 Tremont Pl., Denver	5DV505	1926	Demolished
Taussig House	1625 E. 3 <sup>rd</sup> , Denver	5DV167	1926	Country Club HD
Tower of Memories, Crown Hill Cemetery (with Charles A. Smith)	8500 W. 29 <sup>th</sup> Ave., Lakewood	5JF467	1926	National Register
Davis & Shaw Furniture Building	1434 Champa St., Denver	5DV843.1	1927	

**United States Department of the Interior**  
National Park Service

**National Register of Historic Places**  
**Continuation Sheet**

Section number      Page 27

Bennett-Field House, Denver, Colorado

Ideal Building (addition & remodel)	821 17th St., Denver	5DV125	1927	National Register
Texas Pavilion for Women	6401 W. Colfax Ave., Lakewood	5JF178	1927	National Register
Jewish Consumptives' Relief Power House.	6401 W. Colfax Ave., Lakewood	5JF178	1927	National Register
Jewish Consumptives' Relief Security Building	650 17th St., Denver	5DV1729	1927	Demolished
St. Lukes Hospital	Boise, Idaho		1928	
Lawrence C. Phipps House	3400 Belcaro Dr., Denver	5DV168	1932	National Register
Jewish Consumptives' Relief Society TriBoro Dining Hall	6401 W. Colfax Ave., Lakewood	5JF178	1936	National Register
<b>Arthur A. Fisher and Alan B. Fisher, Architects (1937-1956)</b>				
New Railway Exchange Building	909 17th St., Denver	5DV525	1937	National Register
Colorado State Capitol Annex Building & Boiler Plant <small>(Associated Architects for the State Capitol Annex; Arthur A. Fisher member)</small>	1341 Sherman St., Denver	5DV3844	1939	National Register
Country Club Gardens Apartments	E. Ellsworth & S. Downing, Denver		1940	
Denver Public Library <small>(with Burnham Hoyt)</small>	10 W. 14 <sup>th</sup> Ave. Pkwy., Denver	5DV3520	1955	National Register
<b>Fisher, Fisher and Davis (1956-1959)</b>				
Colorado Department of Employment	251 E. 12th Ave., Denver	5DV4147	1956	
<b>Undated Buildings</b>				
International Trust Company Building	Denver			Demolished
University of Denver Stadium	Denver			Demolished
Greenlee Elementary School	1150 Lipan, Denver			
Chester Morey House	Denver			
John Evans House	Denver			
George B. Berger House	Denver			
Harold Kountze House	Denver			
A.C. Foster House	Denver			
George W. Gano House	Denver			
William B. Berger House	Denver			
Jarvis Johnson House	4150 Montview, Denver			
Hospital	Casper, WY			
Hospital	Sheridan, WY			

**United States Department of the Interior**  
National Park Service

**National Register of Historic Places**  
**Continuation Sheet**

Section number \_\_\_ Page28

Bennett-Field House, Denver, Colorado

---

Hospital	Cheyenne, WY			
Hospital	Thermopolis, WY			
Hospital	Pueblo			
Hospital	Colorado Springs			
Hospital	Greeley			
Hospital	Twin Falls, ID			
Katherine Mullen O'Connor House	Denver			
Donald N. Gilpin House	Broadmoor vicinity, Colorado Springs			
Church of the Ascension	Denver			



UNITED STATES DEPARTMENT OF THE INTERIOR  
NATIONAL PARK SERVICE

NATIONAL REGISTER OF HISTORIC PLACES  
EVALUATION/RETURN SHEET

REQUESTED ACTION: NOMINATION

PROPERTY Bennett--Field House  
NAME:

MULTIPLE  
NAME:

STATE & COUNTY: COLORADO, Denver

DATE RECEIVED: 5/24/10 DATE OF PENDING LIST: 6/23/10  
DATE OF 16TH DAY: 7/08/10 DATE OF 45TH DAY: 7/08/10  
DATE OF WEEKLY LIST:

REFERENCE NUMBER: 10000435

REASONS FOR REVIEW:

APPEAL: N DATA PROBLEM: N LANDSCAPE: N LESS THAN 50 YEARS: N  
OTHER: N PDIL: N PERIOD: N PROGRAM UNAPPROVED: N  
REQUEST: N SAMPLE: N SLR DRAFT: N NATIONAL: N

COMMENT WAIVER: N

ACCEPT  RETURN  REJECT 7.8.10 DATE

ABSTRACT/SUMMARY COMMENTS:

RECOM./CRITERIA \_\_\_\_\_

REVIEWER \_\_\_\_\_ DISCIPLINE \_\_\_\_\_

TELEPHONE \_\_\_\_\_ DATE \_\_\_\_\_

DOCUMENTATION see attached comments Y/N see attached SLR Y/N

If a nomination is returned to the nominating authority, the nomination is no longer under consideration by the NPS.



5DV. 3534

0001

Bennett Field House

Denver County, CO



50V. 3534

0002

Bennett-Field House  
Denver County, CO



501. 3534

0003

Bennett-Field House

Denver County, CO





5 DV. 3534

0004

Bennett-Field House

Denver County, CO



SDV. 3534

0005

Bennett-Field House  
Denver County, CO



50v. 3534

0006

Bennett-Field House

Denver County, CO



50v. 3534

0007

Bennett-Field House  
Denver County, CO





5DV, 3534

Bennett Field House

Denver County, CO

0008



5 DV. 3534

0009

Bennett-Field House  
Denver County, CO



5 DV. 3534

0010

Bennett - Field House

Denver County, CO



50V.3534

0011

Bennett-Field House

Denver County, CO





5 DV. 3534

6012

Bennett-Field House

Denver County, CO



5 DV. 3534

0013

Bennett-Field House  
Denver County, CO



5 Dr. 3534

Bennett - Field House

Denver County, CO

0014



5 DV. 3534

Bennett-Field House

Denver County, CO

0015

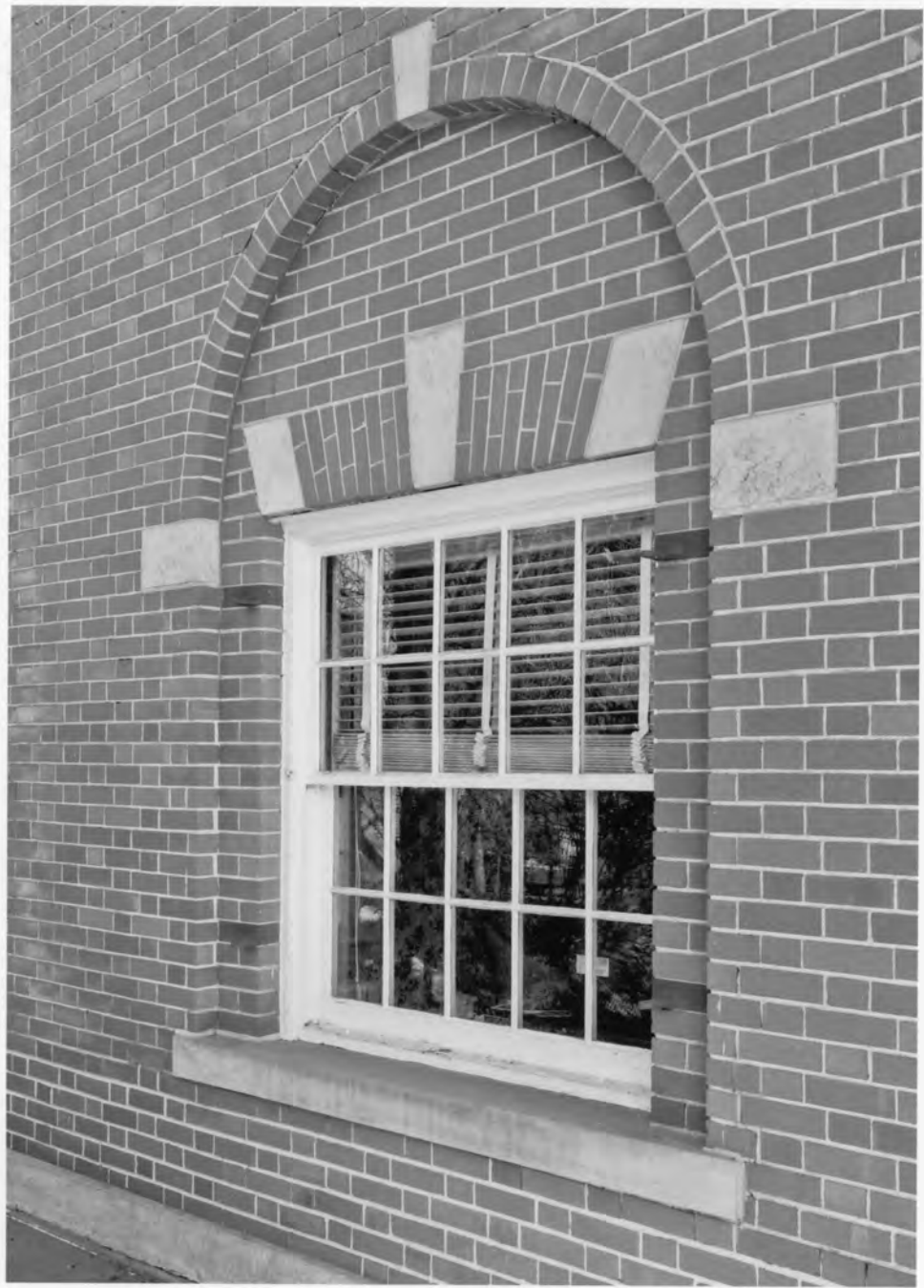




5 DV. 3534

Bennett-Field House  
Denver County, CO

0016



5DV. 3534

0017

Bennett-Field House

Denver County, CO



50v. 3534

0018

Bennett-Field House

Denver County, CO



SDV. 3534

0019

Bennett - Field House

Denver County, CO





5 DV. 3534

0020

Bennett - Field House  
Denver County, CO



5 Dr. 3534

0021

Bennett - Field House

Denver County, CO



SDV. 3534

0022

Bennett-Field House

Denver County, CO



50v.3534

Bennett-Field House

Denver County, CO

0023





5DV.3534

0024

Bennett-Field House

Denver County, CO



50V. 3534

Bennett - Field House  
Denver County, CO

0025



5 DV. 3534

0026

Bennett-Field House

Denver County, CO



50V. 3534

0027

Bennett-Field House

Denver County, CO





5 DV. 3534

0028

Bennett-Field House

Denver County, CO



5DV. 3534

0029

Bennett-Field House

Denver County, CO



50V.3534

0030

Bennett-Field House

Denver County, CO



5 DV. 3534

0031

Bennett-Field House

Denver County, CO





5 DV. 3534

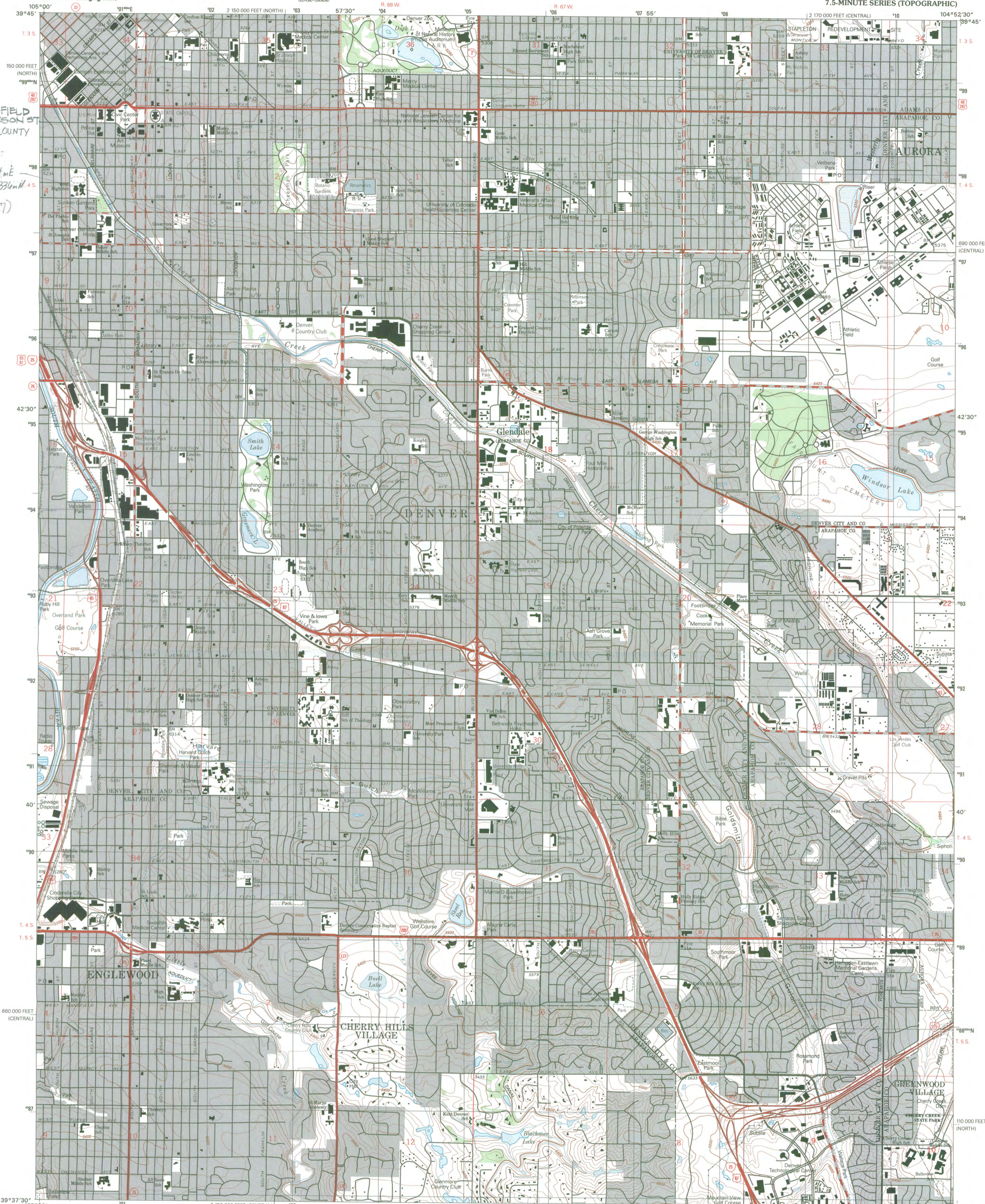
Bennett-Field House

Denver County, CO

0032



BENNETT-FIELD 740 CLARKSON ST DENVER COUNTY 50V.3534 UTM: Zone 13, 501944 nE 4397336 mE (NAD27)



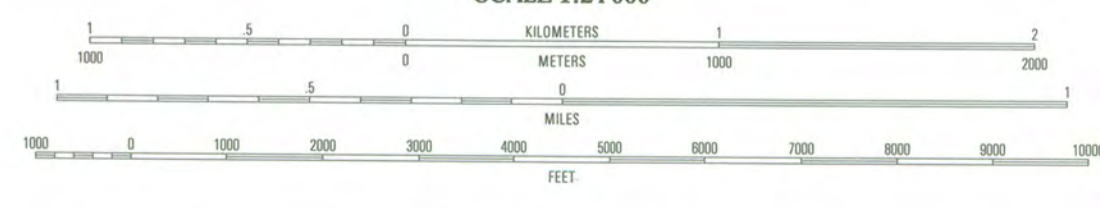
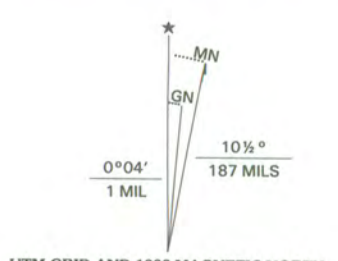
Produced by the United States Geological Survey

Topography compiled 1964. Planimetry derived from imagery taken 1988 and other sources. Photospectred using imagery taken 1997; no major culture or drainage changes observed. PLSS and survey control current as of 1965. Boundaries, other than corporate, revised 1999.

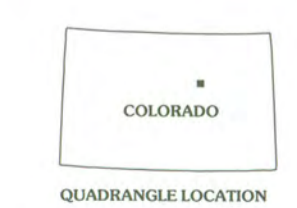
North American Datum of 1927 (NAD 27). Projection and 1000-meter grid: Universal Transverse Mercator, zone 13 10 000-foot ticks: Colorado Coordinate System of 1927 (central and north zones).

North American Datum of 1983 (NAD 83) is shown by dashed corner ticks. The values of the shift between NAD 27 and NAD 83 for 7.5-minute intersections are obtainable from National Geodetic Survey NADCON software.

There may be private inholdings within the boundaries of the National or State reservations shown on this map. Areas covered by dashed light-blue patterns are subject to controlled inundation.



CONTOUR INTERVAL 10 FEET NATIONAL GEODETIC VERTICAL DATUM OF 1929 TO CONVERT FROM FEET TO METERS, MULTIPLY BY 0.3048



ROAD CLASSIFICATION table with symbols for primary, secondary, and unimproved roads.

QUADRANGLE LOCATION table with grid numbers 1-8.

ENGLEWOOD, CO 1997 NIMA 5063 III NW-SERIES V877

THIS MAP COMPLIES WITH NATIONAL MAP ACCURACY STANDARDS FOR SALE BY U.S. GEOLOGICAL SURVEY, P.O. BOX 25286, DENVER, COLORADO 80225





HISTORY *Colorado*



May 17, 2010

Carol D. Shull  
Keeper of the National Register  
National Register of Historic Places  
1201 Eye "I" Street, N.W. 8<sup>th</sup> Floor (MS 2280)  
Washington, D.C. 20005-5905

Dear Ms. Shull:

We are pleased to submit for your review the enclosed National Register of Historic Places nomination for the Bennett-Field House, Denver County, Colorado (5DV.3534).

The State Review Board reviewed the nomination at its meeting on May 7, 2010. The board voted unanimously to recommend to the State Historic Preservation Officer that the property met the criteria for listing in the National Register.

We look forward to the formal listing of this property. If you have any questions, please do not hesitate to contact me.

Sincerely,

Heather L. Bailey  
National & State Register Historian  
Office of Archaeology and Historic Preservation  
History Colorado  
(303) 866-4683  
(303) 866-2041 (fax)  
heather.bailey@chs.state.co.us

Enclosures  
Registration forms  
USGS map  
CDR  
Photographs

THE COLORADO HISTORICAL SOCIETY

CIVIC CENTER PLAZA 1560 BROADWAY SUITE 400 DENVER COLORADO 80202 [www.historycolorado.org](http://www.historycolorado.org)