



F.J. Clark House

Marycliff-Cliff Park Historic District

Spokane, Washington, *SPOKANE COUNTY*

Claire Bishop

DOE
DEC 21 1979

October, 1978

Washington State Office of Archaeology and
Historic Preservation

Pivotal structure-north facade-on campus
of Marycliff School

APR 18 1979

1 of ~~22~~ 22



F.J. Clark Cistern

Marycliff-Cliff Park Historic District

Spokane, Washington, *SPOKANE COUNTY* APR 18 1979

Claire Bishop

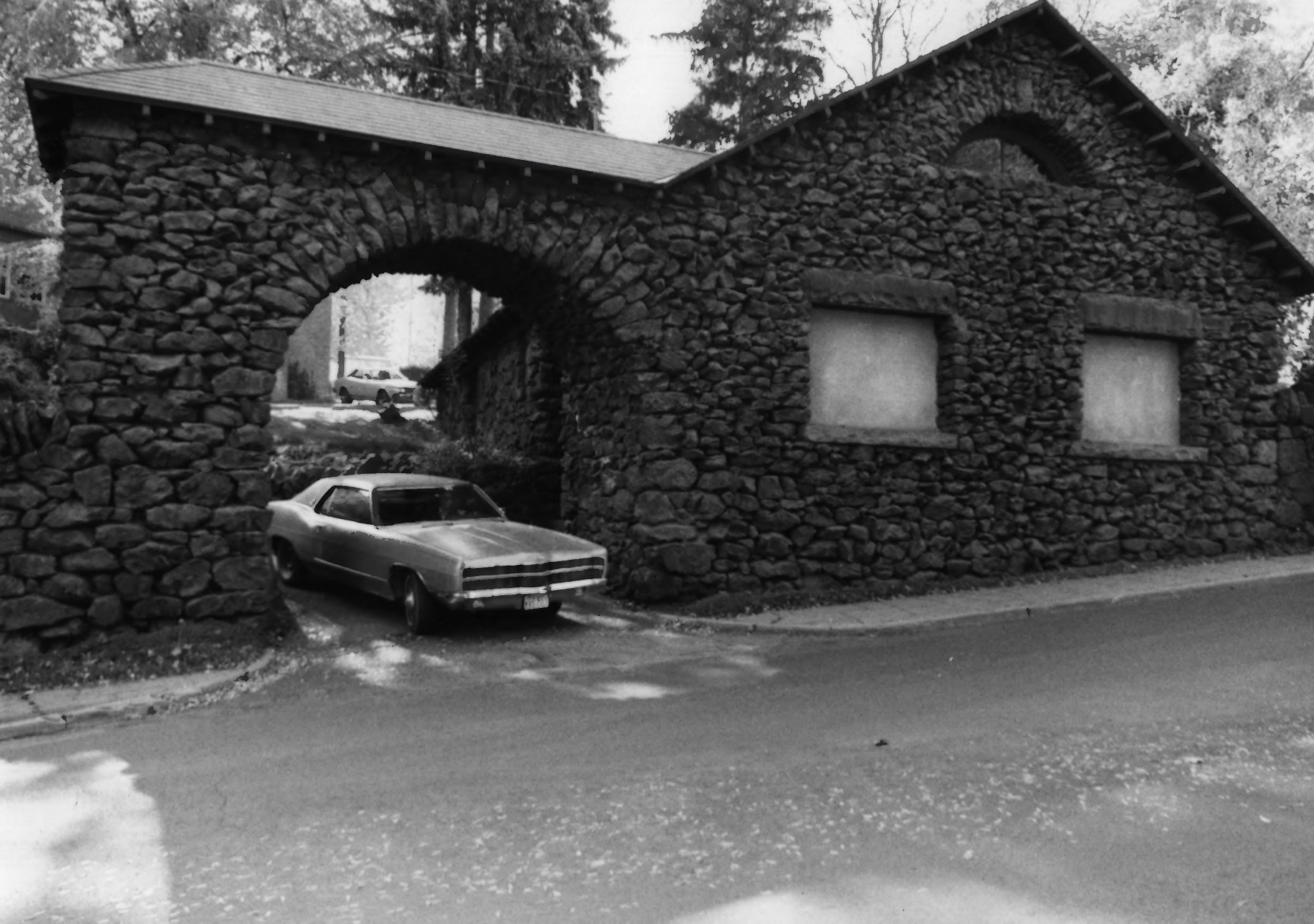
October, 1978

Washington State Office of Archaeology and
Historic Preservation

Pivotal structure, located southwest of the
mansion

2 of *22*

DOE
DEC 21 1979



F.J. Clark Gatehouse
Marycliff-Cliff Park Historic District
Spokane, Washington, *SPOKANE COUNTY*

APR 18 1979

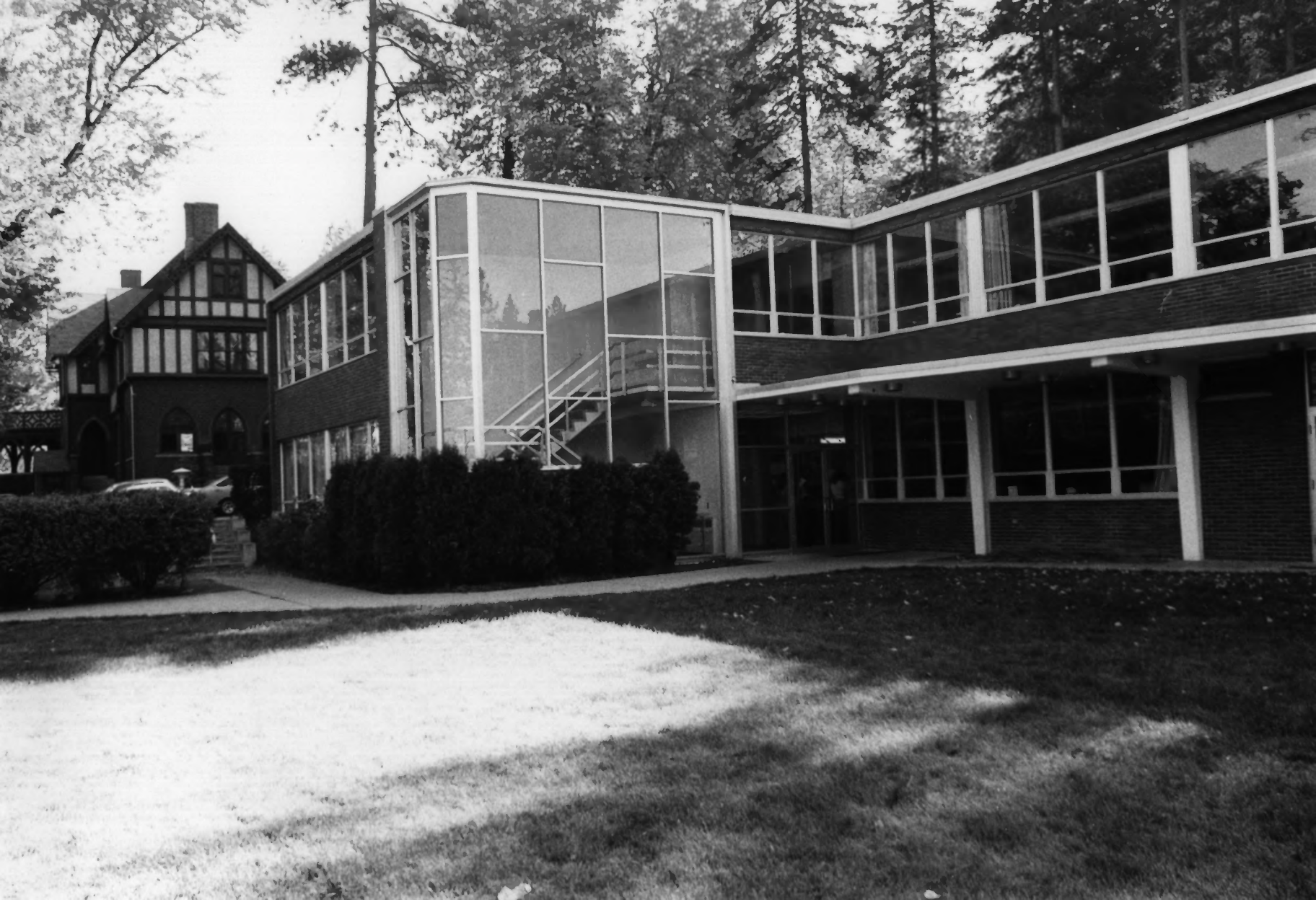
Claire Bishop
October, 1978

Washington State Office of Archaeology and
Historic Preservation

Pivotal structure-north facade facing 7th
Avenue

DDE
DEC 21 1979

3 of ~~2~~ 22



Marycliff School classroom building
Marycliff-Cliff Park Historic District
Spokane, Washington

Claire Bishop
October, 1978

DEC 21 1978
BOE

Washington State Office of Archaeology and
Historic Preservation

Intrusive structure, located west of F.J.
Clark House

APR 18 1979



Austin Corbin House

Marycliff-Cliff Park Historic District

Spokane, Washington, *SPOKANE COUNTY*

Claire Bishop

October, 1978

Washington State Office of Archaeology and
Historic Preservation

Primary structure-north and west facades

Pivotal

5 of 

5 of 22

DOE
DEC 21 1979

APR 18 1979



D.C. Corbin House

Marycliff-Cliff Park Historic District

Spokane, Washington, *SPOKANE COUNTY*

Claire Bishop

October, 1978

Washington State Office of Archaeology and
Historic Preservation

Primary structure-south facade

Final

DOE

APR 18 1979

6 of 14
6 of 22

DEC 21 1978



503

503 Sumner Avenue

Marycliff-Cliff Park Historic District

Spokane, Washington, *SPOKANE COUNTY*

Claire Bishop

October, 1978

DEC 21 *DOE*

Washington State Office of Archaeology and
Historic Preservation

Pivotal structure-northeast facade

7 of ~~22~~

APR 18 1979

7 of 22



523 Sumner Avenue

Marycliff-Cliff Park Historic District

Spokane, Washington

Claire Bishop

October, 1978

Washington State Office of Archaeology and
Historic Preservation

Recent compatible structure-northeast facade

8 of 22

APR 18 1979

DEC 21 1979 *DOE*



529 Sumner Avenue
Marycliff-Cliff Park Historic District
Spokane, Washington, *SPOKANE COUNTY*

Claire Bishop
October, 1978

DOE
DEC 21 1979

Washington State Office of Archaeology and
Historic Preservation

Primary structure-northeast facade

APR 18 1979



713 Sumner Avenue

Marycliff-Cliff Park Historic District

Spokane, Washington, *SPOKANE COUNTY*

Claire Bishop

October, 1978

DOE
DEC 21 1979

Washington State Office of Archaeology and
Historic Preservation

Intrusive structure-south facade

10 of ~~11~~ 22

APR 18 1979



1108 Wall Street

Marycliff-Cliff Park Historic District

Spokane, Washington, *Spokane County* *DOE*

Claire Bishop

DEC 21 1979

October, 1978

Washington State Office of Archaeology and
Historic Preservation

Primary structure-southeast facade

Recent Copy sent to [unclear]

APR 18 1979

11 of ~~11~~

22



604 Sound Avenue

Marycliff-Cliff Park Historic District

Spokane, Washington, *SPOKANE COUNTY*

Claire Bishop

October, 1978

Washington State Office of Archaeology and
Historic Preservation

Secondary structure-south facade

12 of 22

JOE
21

APR 18 1979



611 West 13th Avenue
Marycliff-Cliff Park Historic District
Spokane, Washington, *SPOKANE COUNTY*

Claire Bishop

DEC 21 1979 *DOE*

October, 1978

Washington State Office of Archaeology and
Historic Preservation

Secondary structure-north facade

APR 18 1979

~~10-1-78~~
12-27



Cliff Park

Marycliff-Cliff Park Historic District

Spokane, Washington

Claire Bishop

October, 1978

Washington State Office of Archaeology and
Historic Preservation

DEC 2 1979
DOE

14 of ~~20~~

22

APR 18 1979



420 14th AVENUE

MARYCLIFF-CLIFF PARK HISTORIC DISTRICT
SPOKANE, WASHINGTON, *Spokane County*

NOV 15 1979

SARA PATTON

AUGUST, 1979

WASHINGTON STATE OFFICE OF ARCHAEOLOGY AND
HISTORIC PRESERVATION

PRIMARY STRUCTURE - SOUTH FACADE *DOE*

~~#150/22~~ #150/22

DEC 21 1979



STREETSCAPE - SOUND AVENUE

MARYCLIFF-CLIFF PARK HISTORIC DISTRICT

SPOKANE, WASHINGTON, *SPOKANE County*

SARA PATTON

NOV 15 1979

AUGUST, 1979

WASHINGTON STATE OFFICE OF ARCHAEOLOGY AND
HISTORIC PRESERVATION

SECONDARY STRUCTURES - NORTH FACADES

#
16 of 22

DOE
DEC 21 1979



STREETSCAPE - SOUND AVENUE

MARYCLIFF-CLIFF PARK HISTORIC DISTRICT
SPOKANE, WASHINGTON, *SPOKANE County*

SARA PATTON

NOV 15 1979

AUGUST, 1979

WASHINGTON STATE OFFICE OF ARCHAEOLOGY AND
HISTORIC PRESERVATION

SECONDARY STRUCTURE - NORTH FACADE

#17 of 22

DOE
DEC 21 1979



1249 WALL

MARYCLIFF-CLIFF PARK HISTORIC DISTRICT
SPOKANE, WASHINGTON

NOV 15 1979

SARA PATTON

SPOKANE County

AUGUST, 1979

WASHINGTON STATE OFFICE OF ARCHAEOLOGY AND
HISTORIC PRESERVATION

PRIMARY STRUCTURE - NORTH FACADE

DOE

DEC 21 1979

180/22



614 14th AVENUE

MARYCLIFF-CLIFF PARK HISTORIC DISTRICT
SPOKANE, WASHINGTON, *SPOKANE COUNTY*

NOV 15 1979

SARA PATTON

AUGUST, 1979

WASHINGTON STATE OFFICE OF ARCHAEOLOGY AND
HISTORIC PRESERVATION

SECONDARY STRUCTURE - SOUTH FACADE *POE*

DEC 21 1979



STREETSCAPE 13th AVENUE

MARYCLIFF-CLIFF PARK HISTORIC DISTRICT

SPOKANE, WASHINGTON

SARA PATTON

NOV 15 1979

AUGUST, 1979

WASHINGTON STATE OFFICE OF ARCHAEOLOGY AND
HISTORIC PRESERVATION

DEC 21 1979
ADE

SECONDARY STRUCTURES - NORTH FACADE

20922



504 14th AVENUE

MARYCLIFF-CLIFF PARK HISTORIC DISTRICT
SPOKANE, WASHINGTON, *SPOKANE County*
SARA PATTON

NOV 15 1979

AUGUST, 1979

WASHINGTON STATE OFFICE OF ARCHAEOLOGY AND
HISTORIC PRESERVATION

SECONDARY STRUCTURE - EAST FACADE

DEC 21 1979 *POE*



KEEP
→
RIGHT

SEVENTH AVENUE BASALT ROADBED AND WALLS

MARYCLIFF-CLIFF PARK HISTORIC DISTRICT

SPOKANE, WASHINGTON NOV 15 1979

SARA PATTON

Spokane County

AUGUST, 1979

WASHINGTON STATE OFFICE OF ARCHAEOLOGY AND
HISTORIC PRESERVATION

* 22922

DOE
DEC 21 1979