



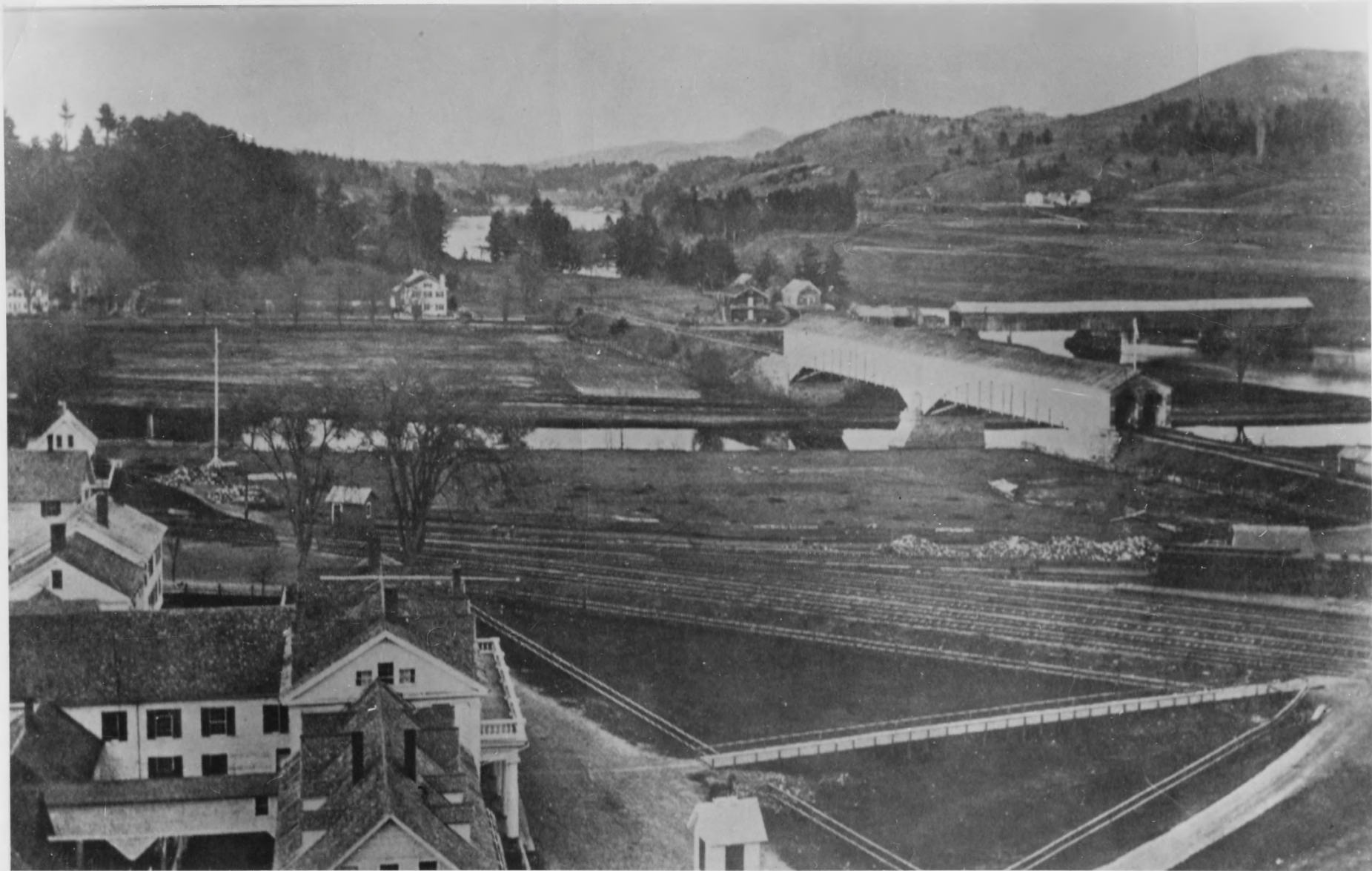
74-A-34

(

AUG 22 1980

White River Junction Historic District
 Hartford, VT
 Credit: Courtney Fisher *Windsor Co.*
 Date: May 1974
 Negative filed at Vermont Division for
 Historic Preservation
 Description: Aerial view. View northwest.
 Photograph 1/25 JUL 1 1980

Vt. Div. for Historic Preservation
 Windsor County Hartford 5/74
 White River Junction
 74-A-34 Courtney Fisher



#2

73-B-4

AUG 22 1980

White River Junction Historic District
Hartford, VT

Credit: unknown

Date: circa 1865-1875

Windsor Co

Negative filed at Vermont Division for
Historic Preservation

JUL 1 1980

Description: Bird's Eye View of first Junction House, CVRR tracks and White River.

Photograph $\frac{2}{5}$ View north.



#3

73-B-4

White River Junction Historic District
Hartford, VT

Credit: unknown

Date: circa 1885

Negative filed at Vermont Division for
Historic Preservation

Description: Bird's Eye View of second Junc-
tion House, CVRR tracks and White River.

Photograph 3/25 View north.

Windsor Co

JUL 1 1980

AUG 22 1980

VERMONT



CORNER OF MAIN AND GATES STREETS IN 1927.

#4

73-B-4

AUG 22 1980

White River Junction Historic District
Hartford, VT
Credit: Unknown
Date: 1927
Negative filed at Vermont Division for
Historic Preservation
Description: Coolidge Hotel (#12).
View northwest.
Photograph 4/25

Windsor Co

JUL 1 1980



White River Junction, Vt. in the future.

73-B-3 #5

White River Junction Historic District
Hartford, VT

Credit: Unknown

Windsor Co.

Date: circa 1910

JUL 1 1980

Negative filed at Vermont Division for
Historic Preservation

Description: Post card view purporting to
show White River Junction in the future.

Photograph 5/25 view southwest.

AUG 22 1980



#6

73-A-82

AUG 22 1980

White River Junction Historic District
Hartford, VT

Credit: Courtney Fisher

Windsor co

Date: November 1973

JUL 1 1980

Negative filed at Vermont Division for
Historic Preservation

Description: Boston and Maine Railway Depot
(#1). View north.

Photograph 6/25



AUG 22 1980

White River Junction Historic District
Hartford, VT

Credit: Courtney Fisher *Windsor Co*

Date: November 1973

JUL 1 1980

Negative filed at Vermont Division for
Historic Preservation

Description: Boston and Maine Railway Depot
(#1), detail of weathervane. View north.

Photograph 7/25

#7
73-17-52



#8

80-A-33

AUG 22 1980

White River Junction Historic District
Hartford, VT

Credit: Courtney Fisher

Date: February 1980

Negative filed at Vermont Division for
Historic Preservation

Description: Looking down Gates St. toward
Boston & Maine Railway Depot (#1); L to R #'s
Photograph 80-~~3~~3, 1, 2, 3, 4. View east.

Windsor Co

JUL 1 1980



73-A-82

#9

AUG 22 1980

White River Junction Historic District
Hartford, VT

Credit: Courtney Fisher

Date: November 1973

Negative filed at Vermont Division for
Historic Preservation

Description: Inter-State Bank (#'s 4, 5, 6);
L to R #'s 3, 4, 5, 6, 7, 8. View southeast.

Photograph 9/25

Windsor Co

JUL 1 1980



#10

73-A-82

AUG 22 1980

White River Junction Historic District
Hartford, VT

Credit: Courtney Fisher *Windsor Co*

Date: November 1973

Negative filed at Vermont Division for
Historic Preservation

Description: Looking N down E side of So. Main
St. toward Twin State Fruit Co. (#25); L to R
Photograph 10/25# 's 12, 14, 25, 13, 5, 6, 7, 8.

JUL 1 1980



80-A-34 #11

AUG 22 1980

White River Junction Historic District
Hartford, VT

Credit: Courtney Fisher *Windsor Co*

Date: February 1980 *JUL 1 1980*

Negative filed at Vermont Division for
Historic Preservation

Description: Looking N down E side of So. Main
St.; L to R #'s 14, 5, 6, 7, 8, 9, 10, 29.

Photograph 11 *125*



VAULT
ALARM

UBUCHON
HARDWARE

KWIK-WAY CONVENIENCE FOOD STORE OPEN 7AM 11PM

BREAD MILK MEATS COLD DRINKS ICE CREAM KWIK-WAY

Food Store
OPEN 7-11

HOTEL
ROOMS &
RESTAURANT

DO NOT
ENTER

#12
74-F-81

AUG 22 1980

White River Junction Historic District
Hartford, VT
Credit: Courtney Fisher *Windsor Co.*
Date: September 1974 JUL 1 1980
Negative filed at Vermont Division for
Historic Preservation
Description: Greenough Block (#11). View SW.
Photograph 12/25



73-A-77

#13

White River Junction Historic District
Hartford, VT
Credit: Courtney Fisher
Date: November 1973
Negative filed at Vermont Division for
Historic Preservation
Description: Coolidge Hotel (#12). View NW.
Photograph 13/25

Winkler Co.
JUL 1 1980

AUG 22 1980



#14

73-7-82

White River Junction Historic District
Hartford, VT
Credit: Courtney Fisher *Windsor Co*
Date: November 1973
Negative filed at Vermont Division for *11/1* 1980
Historic Preservation
Description: Vermont District Court (#13).
View northeast.
Photograph 14/25

AUG 22 1980



#15

80-17-33

White River Junction Historic District
Hartford, VT
Credit: Courtney Fisher
Date: February 1980
Negative filed at Vermont Division for
Historic Preservation
Description: Looking NW across parking lot
toward Gates Block (#14).
Photograph 15/25

Windsor Co
JUL 1 1980

AUG 22 1980



FURNITURE

HARDWARE.

PAINTS.

POWERS

POWERS

FURNITURE
HARDWARE
GIFTS

NO PARKING

NO PARKING

WYK 8 E

AUG 22 1980

White River Junction Historic District
Hartford, VT *Windsor Co.*

Credit: Courtney Fisher

Date: November 1973

JUL 1 1980

Negative filed at Vermont Division for
Historic Preservation

Description: Powers Block (#15). View NE.

Photograph 16 / 25

73-H-82

#16



74-A-81

#17

AUG 22 1980

White River Junction Historic District
Hartford, VT

Windsor Co.

Credit: Courtney Fisher

Date: September 1974

JUL 1 1980

Negative filed at Vermont Division for
Historic Preservation

Description: Looking E down S side of No. Main
St.; L to R #'s 19, 14, 16.

Photograph 17 / 25



74-17-8 / #18

AUG 22 1980

White River Junction Historic District
Hartford, VT

Credit: Courtney Fisher

Date: September 1974

Windsor Co

Negative filed at Vermont Division for
Historic Preservation

Description: Gates Memorial Library (#18).

View southwest.

Photograph 18 / 25

JUL 1 1980



80-A-33

#19

AUG 22 1980

White River Junction Historic District
Hartford, VT

Credit: Courtney Fisher

Date: February 1980

Windsor Co.

Negative filed at Vermont Division for
Historic Preservation

Description: Looking W down N side of No. Main

St; L to R #'s 19, 20.

JUL 1 1980

Photograph 19/25



80-A-33

20

AUG 22 1980

White River Junction Historic District
Hartford, VT *Windsor Co.*

Credit: Courtney Fisher

Date: February 1980

JUL 1 1980

Negative filed at Vermont Division for
Historic Preservation

Description: CVRR Bridge (#21). View north.

Photograph 20/25



Firestone

Firestone

REPAIRS
REBUILT
REBUILT
REBUILT

TIRES

RECAPPING

INTERSTATE TIRE COMPANY

VULCANIZING

80-A-34

2

AUG 22 1980

White River Junction Historic District
Hartford, VT

Credit: Courtney Fisher

Date: February 1980

Negative filed at Vermont Division for
Historic Preservation

Description: Inter-State Tire Company (#22).

View southeast

Photograph 21/25



80-17-33

#22

AUG 22 1980

White River Junction Historic District
Hartford, VT

Credit: Courtney Fisher

Wardson Co

Date: February 1980

JUL 1 1980

Negative filed at Vermont Division for
Historic Preservation

Description: Old White River Junction Fire
House (#23). View northwest.

Photograph 22/25



807-33

#23

AUG 22 1980

White River Junction Historic District
Hartford, VT
Credit: Courtney Fisher *Windsor Co*
Date: February 1980
Negative filed at Vermont Division for *III-1* 1980
Historic Preservation
Description: Looking N down So. Main St. toward
Twin State Fruit Co. (#25); L to R #'s 12, 14,
Photograph 23/25 20, 25, 13.



80-7-33

#24

AUG 22 1980

White River Junction Historic District
Hartford, VT

Credit: Courtney Fisher

Date: February 1980

Negative filed at Vermont Division for
Historic Preservation

Description: Renehan & Akers Lumber Co. (#28).
View north.

Photograph 24/25-

JUL 1 1980
Windsor Co.



80-A-33

#25

AUG 22 1980

White River Junction Historic District
Hartford, VT

Credit: Courtney Fisher

Date: February 1980

Negative filed at Vermont Division for
Historic Preservation

Description: Looking S across White River down
old Vt. Rte. 14 bridge toward White River Jct.;
Photograph 25/25 L to R #'s 22, 23.

Windsor Co

JUL 1 1980



White River Junction Historic District (Amendment)

BOSTON AND MAINE RAILROAD LOCOMOTIVE NO. 494

HARTFORD, WINDSOR COUNTY, VERMONT

94-26-24A

Photograph 1



White River Junction Historic District (Amendment)

BOSTON AND MAINE RAILROAD LOCOMOTIVE NO. 494

HARTFORD, WINDSOR COUNTY, VERMONT

Photograph 2

94-26-15



White River Junction Historic District (Amendment)

BOSTON AND MAINE RAILROAD LOCOMOTIVE NO. 494

HARTFORD, WINDSOR COUNTY, VERMONT

Photograph 3

94-26-21



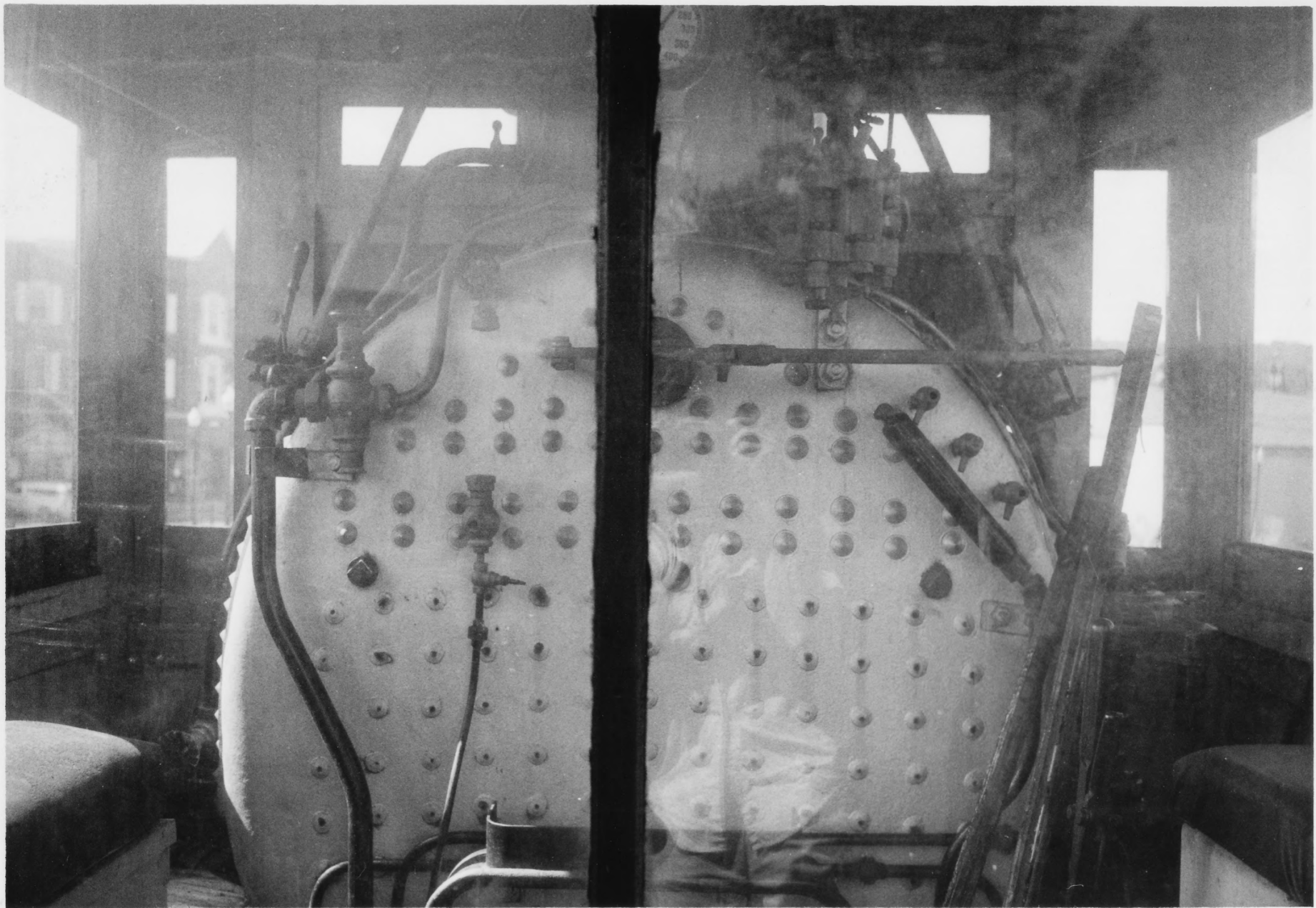
White River Junction Historic District (Amendment)

BOSTON AND MAINE RAILROAD LOCOMOTIVE NO. 494

HARTFORD, WINDSOR COUNTY, VERMONT

Photograph 4

94-26-17



White River Junction Historic District (Amendment)

BOSTON AND MAINE RAILROAD LOCOMOTIVE NO. 494

HARTFORD, WINDSOR COUNTY, VERMONT

Photograph 5

94-26-23



BOSTON & MAINE

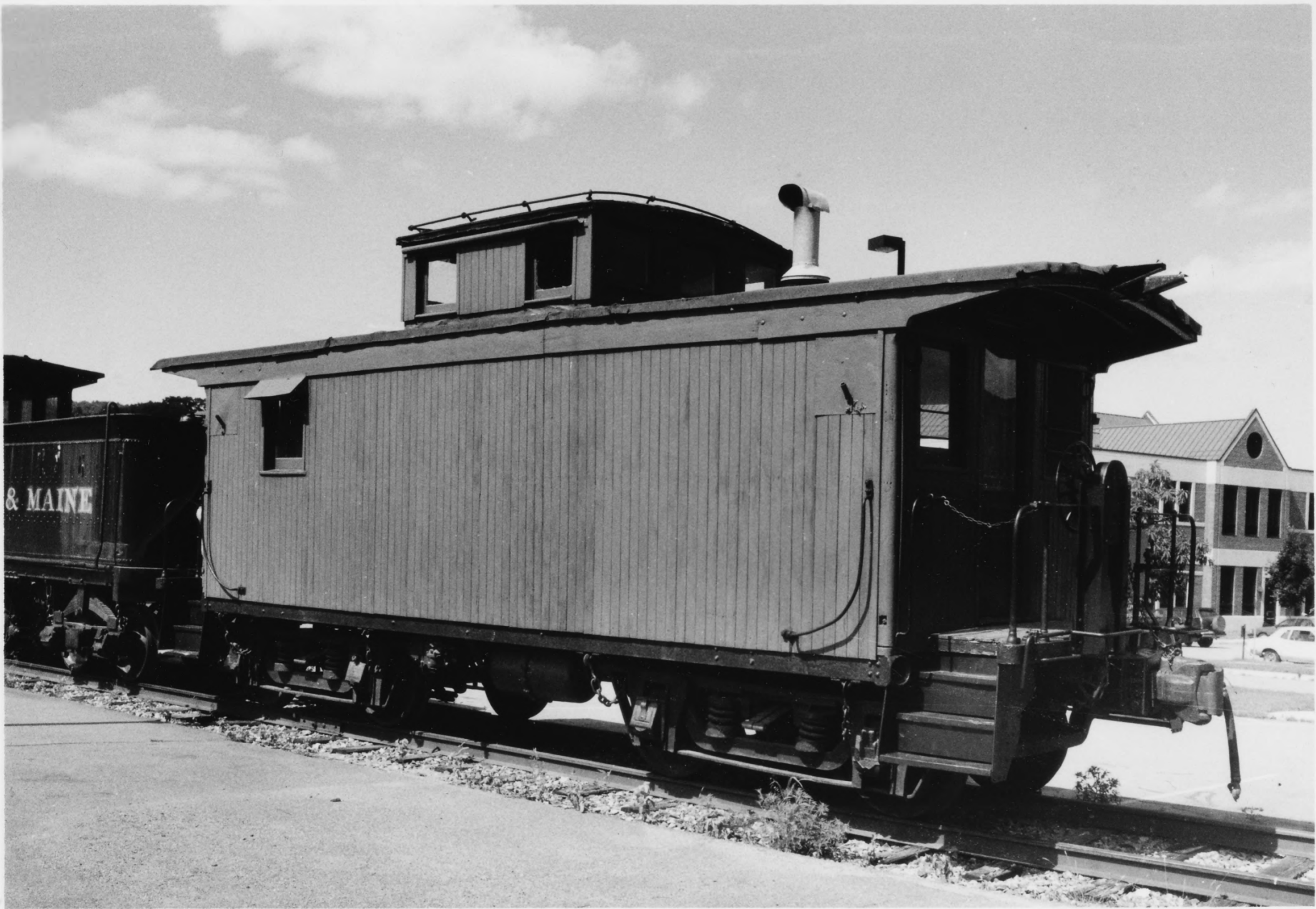
White River Junction Historic District (Amendment)

BOSTON AND MAINE RAILROAD LOCOMOTIVE NO. 494

HARTFORD, WINDSOR COUNTY, VERMONT

Photograph 6

94-26-18



White River Junction Historic District (Amendment)

BOSTON AND MAINE RAILROAD LOCOMOTIVE NO. 494

HARTFORD, WINDSOR COUNTY, VERMONT

Photograph 7

94-26-19