



Blair High School NEHBS #WNO2-118

Sixteenth & Colfax
Blair, Washington County, Nebraska

photo by Steve Slogrin
September, 1990

Negatives at Alley Poyner Architecture, Omaha, Nebraska
view from southeast of site looking Northwest.

photo # 1 of 7



Blair High School NEHBS #KIN02-11B
Sixteenth and Colfax
Blair, Washington County, Nebraska

photo by Steve Shogren
September, 1990

Negatives at Alley Payner Architecture, Omaha
from southwest of site looking northeast.
photo # 2 of 7



BLAIRE High School. NEHBS #WNOZ-118
SIXTEENTH & COLfax
BLAIR, WASHINGTON County, Nebraska

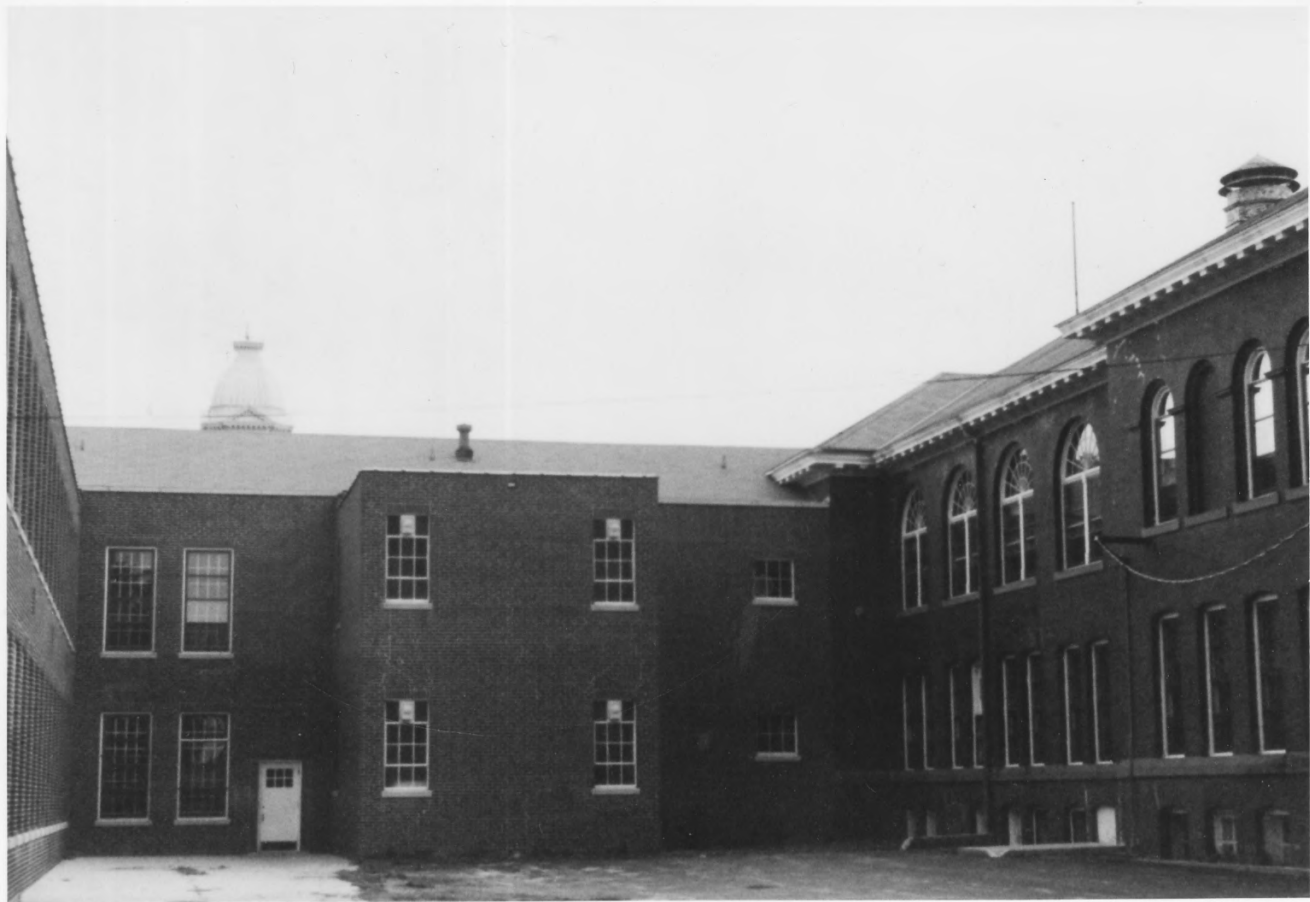
photo by STEVE SHOGGIN

September, 1990

Negatives at ALLEY PoyNER Architecture
Omaha, Nebraska.

HALLWAY Main Floor. From West
looking East.

photo #3 of 7



Blair High School. NEHS # WNOZ-118
Sixteenth and Colfax
Blair, Washington County, Nebraska

photo by Steve Shogrin
September, 1990

Negatives at Alley Payne Architecture
Omaha, Nebraska

view from west looking east
~~back~~ into schoolyard.

photo #4 of 7.



Blair High School NEHBS #WNO2-118
Sixteenth and Colfax
Blair, Washington County, Nebraska

photo by Steve Shogren
September, 1990

Negatives at ALLEY POYNAR Architecture
Omaha, Nebraska

view from Northwest looking Southeast.
photo # 5 of 7



Blair High School NEHBS #LN02-118
SIXTEENTH & COLfax
Blair, WASHINGTON COUNTY, Nebraska

photo by Steve SHOGRIN

September 1990

negatives at Alley Poyner Architecture
Omaha, Nebraska

Hallway, Main Floor of 1929 addition
Looking From NORTH to South.
photo # 6 of 7



Blair High School NEHBS #KH02-118
SIXTEENTH & COLfax
Blair, Washington County, Nebraska

photo by Steve Stogrin

September 1990

Negatives at Alley Payne Architecture
Omaha, Nebraska

view from Northeast of site
looking Southwest.

photo # 7 of 7.