

United States Department of the Interior
National Park Service

National Register of Historic Places
Registration Form

This form is for use in nominating or requesting determinations for individual properties and districts. See instructions in *How to Complete the National Register of Historic Places Registration Form* (National Register Bulletin 16A). Complete each item by marking "x" in the appropriate box or by entering the information requested. If an item does not apply to the property being documented, enter "N/A" for "not applicable." For functions, architectural classification, materials, and areas of significance, enter only categories and subcategories from the instructions. Place additional entries and narrative items on continuation sheets (NPS Form 10-900a). Use a typewriter, word processor, or computer, to complete all items.



1. Name of Property

historic name Mena Commercial Historic District

other names/site number PL0002-PL0003, PL0010, PL0029-PL0030, PL0032, PL0034-PL0042, PL0044-PL0052, PL0061, PL0063-PL0064, PL0105, PL0117-PL0118, PL0120-PL0122, PL0131-PL0132, PL0139-PL0140, PL0150, PL0152-PL0153, PL0155, PL0157, PL0178, PL0186, PL0205, PL214, PL0218-PL0220, PL0264-PL0276, PL0283

2. Location

street & number Mena St. between Port Arthur and Gillham Ave., Sherwood Ave. between Mena and DeQueen St., and U.S. 71 South between Mena and DeQueen St. ☐ not for publication

city or town Mena ☐ vicinity

state Arkansas code AR county Polk code 113 zip code 71953

3. State/Federal Agency Certification

As the designated authority under the National Historic Preservation Act, as amended, I hereby certify that this ☒ nomination ☐ request for determination of eligibility meets the documentation standards for registering properties in the National Register of Historic Places and meets the procedural and professional requirements set for in 36 CFR Part 60. In my opinion, the property ☒ meets ☐ does not meet the National Register criteria. I recommend that this property be considered significant ☐ nationally ☐ statewide ☒ locally. (See continuation sheet for additional comments.)

Cathie Phares
Signature of certifying official/Title

6/25/09
Date

Arkansas Historic Preservation Program
State or Federal agency and bureau

In my opinion, the property ☐ meets ☐ does not meet the National Register criteria. (☐ See Continuation sheet for additional comments.)

Signature of certifying official/Title

Date

State or Federal agency and bureau

4. National Park Service Certification

I hereby certify that the property is:

- ☒ entered in the National Register.
☐ See continuation sheet
- ☐ determined eligible for the National Register.
☐ See continuation sheet
- ☐ determined not eligible for the National Register.
- ☐ removed from the National Register.
- ☐ other, (explain:) _____

Janet J. Holt
Signature of the Keeper

7/23/2009
Date of Action

Mena Commercial Historic District

Name of Property

Polk County, Arkansas

County and State

5. Classification**Ownership of Property**

(Check as many boxes as apply)

- ☒ private
☒ public-local
☐ public-State
☐ public-Federal

Category of Property

(Check only one box)

- ☐ building(s)
☒ district
☐ site
☐ structure
☐ object

Number of Resources within Property

(Do not include previously listed resources in count.)

Contributing

Noncontributing

34

27

buildings

sites

structures

objects

34

27

Total

Name of related multiple property listing

(Enter "N/A" if property is not part of a multiple property listing.)

N/A

**Number of Contributing resources previously listed
in the National Register**

4

6. Function or Use**Historic Functions**

(Enter categories from instructions)

COMMERCE/TRADE/specialty store, business,
professional, and restaurant

DOMESTIC/hotel

RECREATION AND CULTURE/theatre

GOVERNMENT/post office

SOCIAL/meeting hall

HEALTH CARE/hospital

TRANSPORTATION/train depot

Current Functions

(Enter categories from instructions)

COMMERCE/TRADE/specialty store, business, professional,
department store, and restaurant

GOVERNMENT/city hall

RECREATION AND CULTURE/theatre and museums

DOMESTIC/multiple dwelling

7. Description**Architectural Classification**

(Enter categories from instructions)

LATE 19TH AND EARLY 20TH CENTURY

AMERICAN MOVEMENTS/ Commercial Style

LATE 19TH AND 20TH CENTURY REVIVALS/
Classical Revival, Colonial Revival, and Mediterranean
Revival

LATE VICTORIAN/Italianate

MODERN MOVEMENT/ Moderne

Materials

(Enter categories from instructions)

foundation CONCRETE, BRICK, CUT STONE

walls STUCCO, CUT STONE, BRICK,
VINYL/SYNTHETIC, METAL SIDING

roof ASPHALT, METAL, TAR, TILE

other

Narrative Description

(Describe the historic and current condition of the property on one or more continuation sheets.)

United States Department of the Interior

National Park Service

National Register of Historic Places

Continuation Sheet

Section number 7 Page 1**SUMMARY**

The Mena Commercial Historic District was once a thriving commercial center for Mena, Arkansas, and a major transportation route for the Kansas City Southern Railroad. Mena is the county seat for Polk County, in the central western section of the state near the Oklahoma border. Four buildings within the district boundaries have been previously listed on the NRHP. The 1920 Mena Kansas City-Southern Depot (NR listed 06-05-91) is located on the south side of Sherwood Ave. between Mena St. and DeQueen St. The 1917 Old Post Office (NR listed 06-05-91) is located at 520 North Mena St. on the north end of the district. The 1908 Elks Lodge (NR listed 06-04-98) is located at 500 Mena St. at the northeast corner of the district. The 1948 Studebaker Showroom (NR listed 06-09-00) is located at 519 Port Arthur Ave. at the northwest corner of the district. Within the district boundaries, there are 65 buildings. Of the buildings within the district, 52.30% (34 total buildings) maintain a high level of integrity and are contributing elements. There are also four buildings (6.20%) that are individually-listed in the National Register. The other 27 buildings account for 41.50% of the district and are non-contributing. Several periods of significance are represented since there are different phases of development for the town of Mena that occurred between 1896-1955. In addition, all buildings constructed after 1959 are listed as non-contributing structures within the district. The Mena Commercial Historic District's buildings represent commercial architecture from the late 19th and early 20th centuries.

ELABORATION

Mena's existence is a result of the Kansas City, Pittsburgh, and Gulf Railroad. Since Mena was midway between Kansas City, Missouri, and Port Arthur, Texas, it was a good location for investors to build railroad repair shops, a roundhouse for the trains, and a cattle feed and watering lot. Before 1896, nothing existed in Mena except for a log cabin, which is still located in Janssen Park at the corner of Port Arthur Ave. and Seventh St. Arthur Stilwell was the main promoter of Mena and helped form the Arkansas Townsite Company. This company purchased a 210 a. farm for \$5,000 and decided to name the new town "Mena Springs." The first businesses were a saloon and boarding house, which were both tents. When railroad construction reached Mena, the first structures were built in July 1896. Mena was also platted in July 1896 by KCP&G chief engineer Robert Gillham, and the downtown streets were laid out at an unprecedented 80 feet wide. Unlike most town grids that have their Main St. running north-south, Mena's Main St. ran perpendicular to the railroad bearing, northwest to southeast. The largest concentration of contributing structures was built between 1896-1919. These buildings have traditional 19th and 20th century commercial architecture with some having Italianate, Classical Revival, and Colonial Revival features. From 1920-1939, Mena remained a quiet town with an agrarian-based economy. A theatre was built downtown during this period, and many car dealerships opened. From 1940-1955, the town remained relatively uneventful, however several Art Moderne structures were erected, in addition to a few commercial structures. From 1956 to the present, the town has seen steady growth with a still fairly stable commercial downtown area.

1896-1919

The architecture of downtown Mena during this time can be described as traditional commercial architecture, with some structures having Italianate, Classical Revival, and Colonial Revival features. The 20 buildings

United States Department of the Interior
National Park Service

National Register of Historic Places Continuation Sheet

Section number 7 Page 2

constructed during this period represent 30.80% of the district. The brick buildings vary between one and two stories and have rectangular plans and are found throughout the district and not in one certain section.

The 1906 Savoy Hotel (PL0064, contributing) at 523 Sherwood Ave. is the last remaining hotel from this time. The two-story brick structure has a chamfered entrance with the second floor forming a triangular portico supported by a first floor cast-iron column (Figure 3). The Savoy Hotel (PL0064, contributing) is now an apartment house, and retains much of its integrity. Four banks remain from this time. The ca. 1896 Citizens Bank (PL0264, contributing) at 523 Mena St. and the ca. 1900 Planters State Bank (PL0045, contributing) at 812 Mena St. are two-story brick 19th century standard commercial buildings. The 1908 Old First National Bank (PL0040, non-contributing) at 623 Mena St. originally had a cupola on the roof. It has been covered with metal siding and no longer has a cupola, but could possibly be contributing if metal siding is removed. The 1897 National Bank of Mena (PL0042, non-contributing) at 700 Mena St. has had the second floor removed but retains most of its integrity. The 1908 Elks Lodge (PL0029, individual listing) at 500 Mena St. was designed by architect Klingens Smith; it reflects Colonial Revival style and has a Mission style shaped parapet on the front façade. Although erected to accommodate Elks Lodge No. 781, it housed Mena General Hospital from 1935-1951. The 1917 Old Post Office (PL0105, individual listing) at 520 Mena St. reflects Classical and Colonial Revival styles. It is a two-story masonry public institutional structure designed by Treasury Department Architect James A. Wetmore and now houses Mena City Hall. As dairy farms developed near Mena, ca. 1905 Southern Dairy (PL0063, contributing) was built at 521 Sherwood Ave. It later became the Mena Ice Cream Co. and has recently operated as Train Station Antiques. This time period set the historical landscape that still remains in the district. Mena may have lost its economic source in 1910 when the Kansas City Southern railroad moved to Heavener, Oklahoma, but it remained viable at this time.

1920-1939

The 23 buildings constructed during this period reflect 35.40% of the district, and consist of one- and two-story standard commercial buildings made of brick or stone. This era is marked by the erection of the 1920 Mena-Kansas City Southern Depot (PL0010, individual listing) at 518-524 Sherwood Ave. It reflects a Mediterranean style, a popular depot design in the early 20th century. The depot was built southwest from the first depot's location, causing DeQueen St. to be closed to thru traffic at the intersection of Pickering Ave. (now HY 71 South) resulting in a shift of Main St. from DeQueen St. to Mena St. The 1922 Lyric Theatre (PL0037, non-contributing) at 608-610 Mena St. is a two-story brick structure with a recessed front entrance and original Art Deco mosaic tile (Figure 13). The theatre installed talking picture shows in 1930, and now functions as a performing arts theatre called the Ouachita Little Theatre. The ca. 1930 Philpot Middleton Chevrolet Dealership (PL0117, contributing) at 923 Mena St. at the southwest corner of the district is a brick and stone structure with a rounded roof that has a surrounding parapet. Today it functions as an auto repair shop and used car dealership. Although not part of the current Mena Commercial Historic District boundary, 1003 Mena St., directly across Gillham Ave. from the former Philpot Middleton Chevrolet Dealership, originally functioned as an Oldsmobile dealership. The ca. 1920 building at 504 U.S. 71 (PL0272, contributing) once functioned as a Pontiac dealership, but it is uncertain whether or not that was its original

United States Department of the Interior
National Park Service

National Register of Historic Places Continuation Sheet

Section number 7 Page 3

use. This standard 20th century commercial structure has one story and is made of brick. The automobile industry, a new Mediterranean train depot, a theatre, and several commercial structures enhance the Mena Commercial Historic District and make this period significant.

1940-1955

The 11 buildings constructed during this period reflect 16.90% of the district, and consist of one-story commercial brick or stone buildings, three Art Moderne buildings, and a modern brick ranch. The 1948 Studebaker Showroom (PL0150, individual listing) at 519 Port Arthur Ave., and its neighbor, the ca. 1948 Esso Service Station (PL0002, contributing) at 423 Mena St., are both distinctively Art Moderne buildings. Both Art Moderne structures are made of concrete block with white stucco on their façades and have curved parapets and corners on their walls. In addition to these features, the buildings have concrete ledges or coping that surrounds the top part of the façades, which accents the Art Moderne style. The ca. 1955 Dr. Goforth's Office Building (PL0205, non-contributing) at 506 Mena St. has the design of a modern ranch house, although no evidence reveals whether it was originally built to function as a residence or an office. However, the building housed Dr. Goforth's dentist office for decades until recently. Its architecture is unique to the district, as it is the only ranch house and has a low-pitched hip roof with large overhanging eaves surrounding the structure. The ca. 1940s/1960s Chrysler-Plymouth Building (PL0220, non-contributing) at 713-717 Mena St./501-507 Sherwood Ave. originally had an Art Moderne style (see Figure 12). It has had so many additions and alterations that it bears little resemblance to the original structure. The other buildings representing this period are typical one-story, 20th century commercial buildings that are sprinkled throughout the district. Most of these buildings replaced old structures or abandoned lots.

1956-PRESENT

The 11 buildings constructed in this period represent 16.90% of the district, and consist of standard 20th century commercial buildings made of brick and concrete block, two service stations, and one contemporary modern brick structure. The ca. 1965 First National Bank (PL0218, non-contributing) at 701 Mena St. stands out for being the only Googie structure in the district. The building has skylight windows on every elevation and has a raised roofline in center that exposes skylights underneath. This building should become contributing for its architectural significance when it reaches the 50-year criteria. The Mena Commercial Historic District continues to bring in revenue and is home to several successful businesses. The landscape of Mena's downtown area has changed by no longer being a center for railroad transportation, but it still remains a marketplace for people in the surrounding region. Although the commercial district no longer thrives with banks and grocery stores, which have moved outside of the district, it is home to antique stores, coffee shops, a few restaurants, museums, city hall, and other commercial stores.

INTEGRITY

With 58.50% of the resources contributing to the integrity of the Mena Commercial Historic District, it has a strong visual connection to its period of significance. Interruptions in this district are related to several factors. In 1910, the Kansas City Southern Railroad moved out of Mena, leaving the new town to fend for itself. Since the 1950s, the popularity of cars made passenger trains less popular, and railroads discontinued

United States Department of the Interior

National Park Service

National Register of Historic Places

Continuation Sheet

Section number 7 Page 4

passenger routes through Mena in 1969. Before this happened, the railroad had served as a focal point of the town, providing a social and economic outlet. Although banks were once present, they have all moved outside of the district. Another interruption in the district was the establishment of a Wal-Mart in Mena, which resulted in a shift away from the district as the town's commercial center; but unlike other towns, Mena still has several businesses that have continued to thrive despite its large competitor. Eleven buildings or 17% of the district are presently vacant, and several businesses have seasonal hours. Only one of the vacant buildings is non-contributing, and no buildings in the district have been seriously neglected. The alterations on the façades of several buildings in the district are mainly a result of damage from fire or tornados. Many of the buildings, both contributing and non-contributing, have boarded windows and doors.

United States Department of the Interior
National Park Service

National Register of Historic Places Continuation Sheet

Section number 7 Page 5

Resource #	Address	Current Occupant	Map ID	C/NC
PL0002	423 Mena St.	Esso Service Station (Museum)	1	C
PL0003	505 Mena St.	Mena Star Building	2	NC
PL0214	507-509 Mena St.	Allegiance Communications	3	NC
PL0152	511 Mena St.	Vacant	4	C
PL0153	513 Mena St.	Chiropractor	5	C
PL0030	515 Mena St.	Direct TV	6	C
PL0264	523 Mena St.	Vacant	7	C
PL0032/ PL0034	601 Mena St.	Kathy's Home Décor & Furnishings	8	NC
PL0265	605 Mena St.	Carpet Depot	9	C
PL0035	607 Mena St.	Mena Art Gallery	10	NC
PL0036	609 Mena St.	Five "J" Electric, Inc.	11	C
PL0155	613 Mena St.	McCormick's of Mena (Gift Shops)	12	NC
PL0038	615 Mena St.	True North (café and bookstore)	13	C
PL0039	617 Mena St.	Antique Mall	14	NC
PL0040	623 Mena St.	Wayne Madison Photography	15	NC
PL0218	701 Mena St.	Mena Water Department	16	NC
PL0219	709 Mena St.	Allbaugh's Florist/Residence	17	C
PL0044	711 Mena St.	Vacant/Residence	18	NC
PL0220	713-717 Mena St./501-507 Sherwood Ave.	Barber Shop/Auto Shop	19	NC
PL0205	506 Mena St.	Vacant	20	NC
PL0142	510 Mena St.	Vacant	21	C
PL0037	608-610 Mena St.	Ouachita Little Theatre	22	NC
PL0140	612 Mena St.	Randy Rainwater Attorney Office	23	NC
PL0266	614 Mena St.	Thomas Tax Services	24	NC
PL0139	616 Mena St.	Vacant	25	NC
PL0267	620 Mena St.	Skyline Café	26	C
PL0041	622 Mena St.	Doc's Emporium and The Hot Spot	27	NC
PL0042	700 Mena St.	The Look (Salon and Spa)	28	NC
PL0268	702 Mena St.	Mike's Home Solutions	29	NC
PL0269	704 Mena St.	Really Great Pizza/Books-N-Stuf	30	NC
PL0157	515 Sherwood Ave.	Cowboy & Indian Trading Post	31	C
PL0270	517 Sherwood Ave.	Friendship House Coffee Shop	32	C
PL0061	519 Sherwood Ave.	R R Depot Antiques	33	C
PL0063	521 Sherwood Ave.	Train Station Antiques	34	C
PL0064	523 Sherwood Ave.	DeQueen Street Apartments	35	C
PL0271	502 Hwy 71S	Vacant	36	NC
PL0272	504 Hwy 71S	Pizza Pro	37	C
PL0273	506 Hwy 71S	T-Shirt Barn	38	C
PL0274	508 Hwy 71S	Complete Cabinet Solutions	39	C
PL0275	516 Hwy 71S	Nationwide Insurance	40	C
PL0276	518 Hwy 71S	Tobacco Superstore	41	NC
PL0178	801-811 Mena St.	Hazel's Beauty Shop, Mena Nails, Razor Shears, pawn shop	42	NC

United States Department of the Interior
National Park Service

National Register of Historic Places Continuation Sheet

Section number 7 Page 6

Resource #	Address	Current Occupant	Map ID	C/NC
PL0046	813 Mena St.	Coast to Coast Hardware	43	NC
PL0048	817-819 Mena St.	Stewman's Florist/Mena Sports Academy	44	C
PL0132	821-823 Mena St.	Herod's Clothing Store	45	NC
PL0122	901 Mena St.	Mena Cosmetology	46	C
PL0121	905 Mena St.	Office	47	C
PL0120	907 Mena St.	Vacant	48	C
PL0051	909 Mena St.	Vacant	49	C
PL0277	913 Mena St.	Vacant	50	C
PL0117	923 Mena St.	Affordable Auto	51	C
PL0278	420 Hwy 71S	Valero Gas Station	52	NC
PL0045	812 Mena St.	The Jewelry Bank	53	C
PL0047	814-816 Mena St.	Re/Max Real Estate	54	C
PL0049	818 Mena St.	Vacant	55	C
PL0050	822-824 Mena St.	Christian Fellowship	56	C
PL0186	908 Mena St.	Sears	57	NC
PL0052	910 Mena St.	Riverside Antiques & Collectibles	58	C
PL0279	916-918 Mena St.	Tops Shoe Store	59	NC
PL0118	921 Mena St.	Affordable Auto	60	C
PL0150	519 Port Arthur St.	Studebaker Showroom Museum	61	IL
PL0029	500 Mena St.	Real Estate Office	62	IL
PL0010	518-524 Sherwood Ave.	Mena-Kansas City Southern Depot Museum	63	IL
PL0105	520 N. Mena St.	Mena City Hall	64	IL
PL0131	815 Mena St.	Coast to Coast Hardware	65	NC

Chart Key:

C = Contributing

NC = Non-Contributing

IL = Individual Listing

Mena Commercial Historic District
Name of Property

Polk County, Arkansas
County and State

8. Statement of Significance

Applicable National Register Criteria

(Mark "x" in one or more boxes for the criteria qualifying the property for National Register listing.)

- ☒ **A** Property is associated with events that have made a significant contribution to the broad patterns of our history.
- ☐ **B** Property is associated with the lives of persons significant in our past.
- ☐ **C** Property embodies the distinctive characteristics of a type, period, or method of construction or represents the work of a master, or possesses high artistic values, or represents a significant and distinguishable entity whose components lack individual distinction.
- ☐ **D** Property has yielded, or is likely to yield, information important in prehistory or history.

Criteria Considerations

(Mark "x" in all the boxes that apply.)

Property is:

- ☐ **A** owned by a religious institution or used for religious purposes.
- ☐ **B.** removed from its original location.
- ☐ **C.** birthplace or grave of a historical figure of outstanding importance.
- ☐ **D** a cemetery.
- ☐ **E** a reconstructed building, object, or structure.
- ☐ **F** a commemorative property
- ☐ **G** less than 50 years of age or achieved significance within the past 50 years.

Levels of Significance (local, state, national)

Local

Areas of Significance (Enter categories from instructions)

COMMERCE

Period of Significance

1896-1959

Significant Dates

1896

Significant Person (Complete if Criterion B is marked)

Cultural Affiliation (Complete if Criterion D is marked)

Architect/Builder

James Wetmore, T.C. Horstman, Klingen Smith

Narrative Statement of Significance

(Explain the significance of the property on one or more continuation sheets.)

9. Major Bibliographical References

Bibliography

(Cite the books, articles, and other sources used in preparing this form on one or more continuation sheets.)

Previous documentation on file (NPS):

- ☐ preliminary determination of individual listing (36 CFR 67) has been requested
- ☐ previously listed in the National Register
- ☐ Previously determined eligible by the National Register
- ☐ designated a National Historic Landmark
- ☐ recorded by Historic American Buildings Survey # _____
- ☐ recorded by Historic American Engineering

Primary location of additional data:

- ☒ State Historic Preservation Office
- ☒ Other State Agency – Arkansas State Library and Archives
- ☐ Federal Agency
- ☐ Local Government
- ☐ University
- ☐ Other

Name of repository:

United States Department of the Interior
National Park Service

National Register of Historic Places Continuation Sheet

Section number 8 Page 1

SUMMARY

The Mena Commercial Historic District is being nominated to the National Register of Historic Places under **Criterion A** for its association with early development in Mena. The district is being nominated with **local significance**. The Mena Commercial Historic District exemplifies the growth of the town through its height in the 1950s. The period of significance extends from 1896-1959. The district represents Mena's growth as a pivotal midpoint for the Kansas City, Pittsburgh & Gulf Railroad until 1910 and a thriving commercial center for west-central Arkansas.

ELABORATION

Mena is the county seat of Polk County, Arkansas, and located in the western part of the state. Mena is on the west-central border in Arkansas in the Ouachita Mountain region approximately 20 miles east of the Oklahoma border. Mountainous ridges with timber and large fertile valleys along the Ouachita, Cossatot, and Mountain Fork rivers surround the town. Rich Mountain is located approximately 15 miles northwest of Mena. It is the second highest elevation in the state at 2,681 feet and home to Queen Wilhelmina Lodge.¹

Polk County, named after President James K. Polk, was formed November 30, 1844, from territory taken from Sevier County. Most pioneers were attracted to the area for hunting and timber, since the region was not suitable for crops. Dallas, which is located only a few miles south of Mena, became the first county seat the same year. The only structure in Mena before the railroad was a log house that stands today in Janssen Park, two blocks west of Mena St. The town of Mena developed when Arthur E. Stilwell began constructing a railroad. Stilwell was born October 21, 1859, in Rochester, New York, and it was his dream since childhood to move out west and build a railroad that would extend from Kansas City to the Gulf of Mexico. In 1889, at the age of 30, Stilwell started the Kansas City, Pittsburgh & Gulf (KCP&G, later renamed Kansas City Southern). The rail line was 789 miles long and ended at Port Arthur, Texas, which was named in his honor. By the time Stilwell's railroad had reached Siloam Springs, Arkansas, in 1893, an economic depression hit. Stilwell went to Amsterdam, Holland, to raise capital for the railroad in February 1894. He knew one man in Holland, a wealthy Dutch coffee merchant named Jan de Goeijen, who he had befriended on a vacation on a steamliner in 1885. De Goeijen went to work selling securities at Missouri, Kansas, and Texas Trust Company. De Goeijen and Stilwell raised \$3,000,000 in securities in the midst of an international depression. Stilwell named the town Mena after his friend De Goeijen's wife, Folmina.²

Stilwell founded several towns along the railroad. Robert Gillham became Chief Engineer of the KCP&G and its construction company when the railroad was still being laid through Arkansas. He shifted the main line of the original route west into Indian Territory due to the rough Ozark terrain; thus, the town of Gentry in Benton County developed as a central division point for the railroad. Stilwell promoted another town, "Stilwell," about 30 miles south and west of Siloam Springs in 1885. Neither town became successful, even

¹ Williams, Troy and Leon Toon, eds. *History of Polk County, Arkansas*. Curtis Media Corporation: Dallas, Texas, 1988, 1.

² Coogan, Harold. *Mena Centennial History 1896-1996: A Photographic History of the City of Mena, Arkansas*. Looking Glass Press: Murfreesboro, Arkansas, 1996, 6-8.

United States Department of the Interior
National Park Service

National Register of Historic Places Continuation Sheet

Section number 8 Page 2

though he would send someone ahead of the railroad construction to write publicity and build attractions. Mena proved to be different from Stilwell's other towns. Forty days before the tracks reached Mena, the news had reached most of the middle and eastern U.S. People wanted to see if Stilwell could meet his goal of laying a mile of track a day.

The media led to over 1,000 people coming to the area via wagon and excursion trains before the railroad reached the town. As the public became interested in Mena, 5,000 tickets were sold for the first excursion train that would reach the town. The first train arrived in Mena on August 19, 1896. Shortly after, the streets were laid out by Robert Gillham. Like many of the towns along the KCP&G, they were named after investors and KCP&G officials.³ The lots were sold by Fred A. Hornbeck, a Kansas City real estate agent.⁴

Before the train reached Mena, people set up businesses in tents or hastily built shacks. Hotel Mena was one of the first permanent structures, built in 1896. Most hotels were literally tents until Hotel Mena was finished in October of 1896. Tents and unstable wooden structures resulted in many fires in the town's first years.

The first newspaper in Mena was The Courier, a weekly paper that moved from Dallas to Mena in 1896 and was renamed The New Era. One traveler from Carthage, Missouri, was a newspaperman named Mr. A.W. St. John. After taking a train to Acorn and traveling by wagon to Mena, he decided to bring his newspaper business and call it The Mountaineer (later renamed The Mena Star). Although it had sprung up a couple of months earlier, Mena was incorporated as a town September 18, 1896.⁵

In 1898, the Wilhelmina Inn was built on top of Rich Mountain, 15 miles to the northwest. KCP&G officials and its investors built it in an attempt to attract people to travel the railroad and visit the area. They believed if they named it in honor of Queen Wilhelmina of the Netherlands, she might visit the so-called "Castle in the Clouds." After the sale of KCP&G to Kansas City Southern Railroad, the Wilhelmina Inn was abandoned until it permanently closed in 1910, and Queen Wilhelmina never traveled to Mena. However, the area is now part of Queen Wilhelmina State Park and the State of Arkansas owns and runs a new state lodge.⁶

A testament to Mena being a true boomtown and being a thriving commercial center is that within one year it had a population of over 4,000, 200 businesses, 500 homes, 4 churches, 3 schools, and a railroad roundhouse. A countywide election in 1898 established Mena as the county seat.

By the turn of the century, Mena boasted two weekly newspapers, The New Era and The Mena Star. Mena also had four established hotels: the Antler Hotel, the Savoy Hotel, the Mena Hotel, and the Shamrock

³ Ibid., 10-20.

⁴ "Polk County." Accessed online: <http://www.encyclopediaofarkansas.net/>. October 3, 2008, 2 of 5.

⁵ Williams, 67.

⁶ "History of Queen Wilhelmina Lodge." Accessed online: <http://www.queenwilhelmina.com/history/>. October 1, 2008, 1 of 3.

United States Department of the Interior
National Park Service

National Register of Historic Places Continuation Sheet

Section number 8 Page 3

Hotel.⁷ Four banks existed in Mena by 1908, which included the Citizens Bank, Planters State Bank, First National Bank, and the National Bank of Mena. The first public school opened September 7, 1897. The private schools that were open by 1897 included: Mena Hendrix Academy, St. Joseph's Academy, the Lutheran private school, and the Mena Business College. The beginning of the Polk County Library began with twelve women establishing the first public library in Mena in 1897. The county fair began in Mena at Janssen Park in 1897, but by 1908 the fair had outgrown the park and new fairgrounds were purchased in 1908. Having several schools, two weekly newspapers, several banks, the county fairgrounds, a public library, many affluent citizens, and being the new county seat made Mena the commercial center for Polk County.

Dr. J.R. Davis, originally from El Paso, Arkansas, became one of the early affluent citizens of Mena. After studying medicine in St. Louis and Cincinnati, he was appointed division surgeon for the KCP&G in 1898. After his arrival in Mena, he built the Davis Opera House where Mike's Home Solutions (PL0268, non-contributing) now stands today. His building was completed in 1904 and various storefronts, including the Davis Drug Store, as well as the Davis Opera House on the second floor. The Davis Opera House became a speaking podium for national celebrities. Carry Nation passed through Mena during her 1904 crusade, Secretary of Treasury Leslie M. Shaw came in 1906, and William Jennings Bryan campaigned in Mena on January 4, 1908. They all spoke at the Davis Opera House⁸

In 1908, Mena renamed many of the streets because citizens complained they were too hard to pronounce. This is evident from 1908 Sanborn maps, which show most of the commercial district named numerically with the original name in parentheses. Mena had a population of nearly 6,000 in 1908, while it had only a population of only 3,500 in 1901.⁹ At the turn of the 20th century, Mena saw an influx of people immigrating to live in this up-and-coming town. Wealthy executives and skilled workers came from all over the country.¹⁰ G.L. Lochridge moved from Texas to Mena in 1899 after buying a lot on Mena St. to open Lochridge's Dry Goods (PL0032/PL0034).¹¹ That same year, Robert Glenn Shaver, a former Confederate officer who raised troops in the Civil War, moved to Mena and he practiced law for nearly 15 years. He was made Commander in Chief of the State Guard and Reserve Militia of Arkansas in the 1890s, and received the rank of general.

Another event that had an impact on Mena is the murder of Peter "Nigger Pete" Berryman on February 20, 1901. He and a 12-year-old girl named Essie Osborne got in an argument over her nailing a board over a hole in a fence that he used to get water. Berryman was arrested, and in the middle of the night eight masked

⁷ Ibid., 54-57.

⁸ Coogan, 60-100.

⁹ Sanborn Insurance Maps of Mena, Arkansas. Sanborn Map Company: New York, New York, 1901 and 1908, microfiche, Arkansas State Archives and Library, Little Rock, Arkansas.

¹⁰ "Robert Glenn Shaver (1831-1915)." Accessed online: <http://www.encyclopediaofarkansas.net/>. October 2, 2008, 1 of 3

¹¹ Looking Glass Media. "Mena's Centennial Timeline: 1896-1996." *The Ouachita Mountaineer (Centennial Collector's Edition)*. Looking Glass Press: Murfreesboro, Arkansas, Fall 1996.

United States Department of the Interior
National Park Service

National Register of Historic Places Continuation Sheet

Section number 8 Page 4

men took the jail keys and a gun from officer Al Jones. The next day, Berryman was found hanging from a tree, brutally murdered. A committee was formed in an attempt to identify the killers, but they were never found. Scholars consider the murder a lynching, and it has had an impact on Mena's demographics. For years, town officials had a curfew for children. At the turn of the century, an all-black farming community east of Mena called "Little Africa" existed. By 1910, Little Africa was no longer extant, and the black population dwindled from 177 to 46. In the 1920s, Mena advertised itself as a town with "No Negroes."¹²

The most devastating event during this time was when the Kansas City Southern Railroad decided to relocate in 1910. The KCS moved its railroad hospital, roundhouse divisions, and repair shops to Heavener, Oklahoma, which led to over 800 railroad workers and officials leaving town. Within a few years, nearly 1,000 people had left the young town of Mena, whose economy almost completely relied on the railroad business. That same year the Hendrix Academy on College Hill had plans of becoming a four-year college, which would have been helpful for Mena's economic troubles, until a fire destroyed it on August 10. Many Mena citizens felt that the town could survive on its own and stayed regardless of the railroad.¹³

Although KCS relocated to Heavener, Oklahoma, Mena's downtown remained a commercial center for those living in Polk County. Between the 1920s and 1940s, several car dealerships opened on Mena Street that included: a Pontiac Dealership, an Oldsmobile Dealership, the ca. 1930 Philpot Middleton Chevrolet Dealership, and the ca. 1948 Studebaker Showroom (PL0150). Waldron, located 30 miles north in Scott County, was the closest commercial center but did not offer car dealerships.

Mena contributed greatly to the war effort during World War II. On December 30, 1941, a World War II newsreel was played at the Lyric Theatre (PL0037). Almost the entire town registered for sugar rations, and it tripled its quota for donating scrap metal for the war effort. During the town's fourth bond drive, they raised over 20% of their goal to \$287,669.¹⁴

When the railroad stopped passenger service to freight through Mena in 1969, Highway 71 became one of the main routes that supported local commerce in the central-western region of Arkansas. The Mena-Kansas City Southern Depot (PL0010) closed its doors in 1969 until 1987, when it reopened as the town's history museum after being fully restored. The change from a railroad-based to an automobile-based transportation network did affect Mena, and it slowly transformed its economy to being agrarian with timber, cattle, and other livestock as the main sources of revenue.

Various industries have come to Mena over the past few decades that have provided employment and a viable economy in the region. The Mena Intermountain Municipal Airport was built in the 1940s and presently has a 5,000 ft. runway, as well as several companies that service and refurbish aircraft in the

¹² "Polk County." Accessed online: <http://www.encyclopediaofarkansas.net/>. October 3, 2008, 3 of 5.

¹³ Coogan, 102-104.

¹⁴ "Polk County," 3 of 5.

United States Department of the Interior
National Park Service

National Register of Historic Places Continuation Sheet

Section number 8 Page 5

region. The Mena Regional Health System, formerly Mena General Hospital, has a payroll of over \$9 million. A few of the large industries that support the local economy include: U.S. Electrical Motors, Tyson Foods, Sterling Machinery, Brodix, Inc., Street & Performance, R&D Industries, Hatfield Lumber Company, Lewis Lumber Company, and Smith Pallet Company. However, as in previous decades, Mena has remained the business and commercial center of the area, further illustrating its significance to the commercial development and significance of the area.

STATEMENT OF SIGNIFICANCE

The Mena Commercial Historic District is being nominated to the National Register of Historic Places under **Criterion A** for its association with early development in Mena. The district is being nominated with **local significance**. The Mena Commercial Historic District exemplifies the growth of the town through its height in the 1950s. The period of significance extends from 1896-1959. The district represents Mena's growth as a pivotal midpoint for the Kansas City, Pittsburgh & Gulf Railroad until 1910 and a thriving commercial center for west-central Arkansas.

United States Department of the Interior
National Park Service

National Register of Historic Places Continuation Sheet

Section number 9 Page 1

BIBLIOGRAPHY

Coogan, Harold. Interview. Mena, Arkansas. August 20, 2008.

Coogan, Harold. *Mena Centennial History 1896-1996: A Photographic History of the City of Mena, Arkansas*. Looking Glass Press: Murfreesboro, Arkansas, 1996.

Herndon, Dallas T. *Centennial History of Arkansas*. Vol. 1. Little Rock, Arkansas: S.J. Clark Publishing Company, 1922.

"History of Queen Wilhelmina Lodge." Accessed online: <http://www.queenwilhelmina.com/history/>. October 1, 2008.

Longstreth, Richard. *The Buildings of Main Street: A Guide to American Commercial Architecture*. AltaMira Press: Walnut Creek, California, 1987.

Looking Glass Media. "Mena's Centennial Timeline: 1896-1996." *The Ouachita Mountaineer (Centennial Collector's Edition)*. Looking Glass Press: Murfreesboro, Arkansas, Fall 1996.

Mannon, Joe and Harold Coogan. *A Pictorial History of Mena-Polk County, Arkansas: 1896-1936*. Unknown binding, 1986.

"Polk County." Accessed online: <http://www.encyclopediaofarkansas.net/>. October 3, 2008.

"Robert Glenn Shaver (1831-1915)." Accessed online: <http://www.encyclopediaofarkansas.net/>. October 2, 2008.

Sanborn Insurance Maps of Mena, Arkansas. Sanborn Map Company: New York, New York, 1901 and 1908, microfiche, Arkansas State Archives and Library, Little Rock, Arkansas.

Williams, Troy and Leon Toon, eds. *History of Polk County, Arkansas*. Curtis Media Corporation: Dallas, Texas, 1988.

Record # _____

Mena Commercial Historic District
Name of Property

Polk County, Arkansas
County and State

10. Geographical Data

Acreage of Property Approximately 39.14

UTM References

(Place additional UTM references on a continuation sheet.)

1	15	386460	3827856
	Zone	Easting	Northing
2	15	386487	3827823

3	15	386525	3827850
	Zone	Easting	Northing
4	15	386872	3827363

☒ See continuation sheet

Verbal Boundary Description

(Describe the boundaries of the property on a continuation sheet.)

Boundary Justification

(Explain why the boundaries were selected on a continuation sheet.)

11. Form Prepared By

name/title	Angie Clifton/ Architectural Historian – edited by Ralph S. Wilcox, National Register & Survey Coordinator		
organization	Arkansas Historic Preservation Program	date	October 6, 2008
street & number	1500 Tower Building, 323 Center Street	telephone	(501) 324-9787
city or town	Little Rock	state	AR zip code 72201

Additional Documentation

Submit the following items with the completed form:

Continuation Sheets

Maps

A **USGS map** (7.5 or 15 minute series) indicating the property's location

A **Sketch map** for historic districts and properties having large acreage or numerous resources.

Photographs

Representative **black and white photographs** of the property.

Additional items

(Check with the SHPO or FPO for any additional items.)

Property Owner

(Complete this item at the request of SHPO or FPO.)

name	_____		
street & number	_____	telephone	_____
city or town	_____	state	_____ zip code _____

Paperwork Reduction Act Statement: This information is being collected for applications to the National Register of Historic Places to nominate properties for listing or determine eligibility for listing, to list properties, and to amend existing listing. Response to this request is required to obtain a benefit in accordance with the National Historic Preservation Act, as amended (16 U.S.C. 470 *et seq.*)

Estimated Burden Statement: Public reporting burden for this form is estimated to average 18.1 hours per response including time for reviewing instructions, gathering and maintaining data, and completing and reviewing the form. Direct comments regarding this burden estimate or any aspect of this form to the Chief, Administrative Services Division, National Park Service, P. O. Box 37127, Washington, DC 20013-7127; and the Office of Management and Budget, Paperwork Reduction Projects (1024-0018), Washington, DC 20303.

United States Department of the Interior
National Park Service

National Register of Historic Places Continuation Sheet

Section number 10 Page 1

ADDITIONAL UTMS:

5. 15 386768E 3827299N
6. 15 386688E 3827430N
7. 15 386633E 3827404N
8. 15 386601E 3827442N
9. 15 386574E 3827426N
10. 15 386553E 3827491N
11. 15 386575E 3827491N
12. 15 386553E 3827524N
13. 15 386592E 3827556N
14. 15 386443E 3827791N
15. 15 386410E 3827775N
16. 15 386384E 3827819N

VERBAL BOUNDARY DESCRIPTION

Beginning on Mena St. at the midpoint between Church St. and Port Arthur Ave., proceed southeast to the intersection of Mena St. and Port Arthur Ave., thence proceed northeast to the alley behind the east side of Mena St., proceed southeast to Gillham Ave., thence proceed southwest to the alley behind the Philpot Middleton Chevrolet Dealership (PL0117), thence proceed northwest down the alley to the parking lot north of Martin Ave., thence proceed southwest to DeQueen St., thence proceed northwest to Highway 71 South, proceed west on Highway 71 South, proceed northwest behind Mena-Kansas City Southern Depot (PL0010) and stop at Sherwood Ave., thence proceed northwest on DeQueen St., thence proceed northeast on the alley behind the Savoy Hotel (PL0064), then proceed northwest on the alley behind the buildings behind the west side of Mena St. to Port Arthur Ave., thence proceed southwest on Port Arthur Ave., proceed northwest behind the Studebaker Showroom (PL0150), thence proceed northeast to Mena St., which is the point of beginning.

BOUNDARY JUSTIFICATION

This boundary was drawn to include properties in the Mena Commercial Historic District with the greatest density of structures maintaining a high level of integrity.

United States Department of the Interior
National Park Service

National Register of Historic Places Continuation Sheet

Section number	Historic Photos	Page	1
----------------	--------------------	------	---



Figure 1. North Mena St. viewing south, with Citizens Bank (PL0264) on the right, ca. 1900. [Courtesy of Coogan, Harold. *Mena Centennial History 1896-1996: A Photographic History of the City of Mena, Arkansas*. Looking Glass Press: Murfreesboro, Arkansas, 1996.]

United States Department of the Interior
National Park Service

National Register of Historic Places Continuation Sheet

Section number Historic Page 2
 Photos

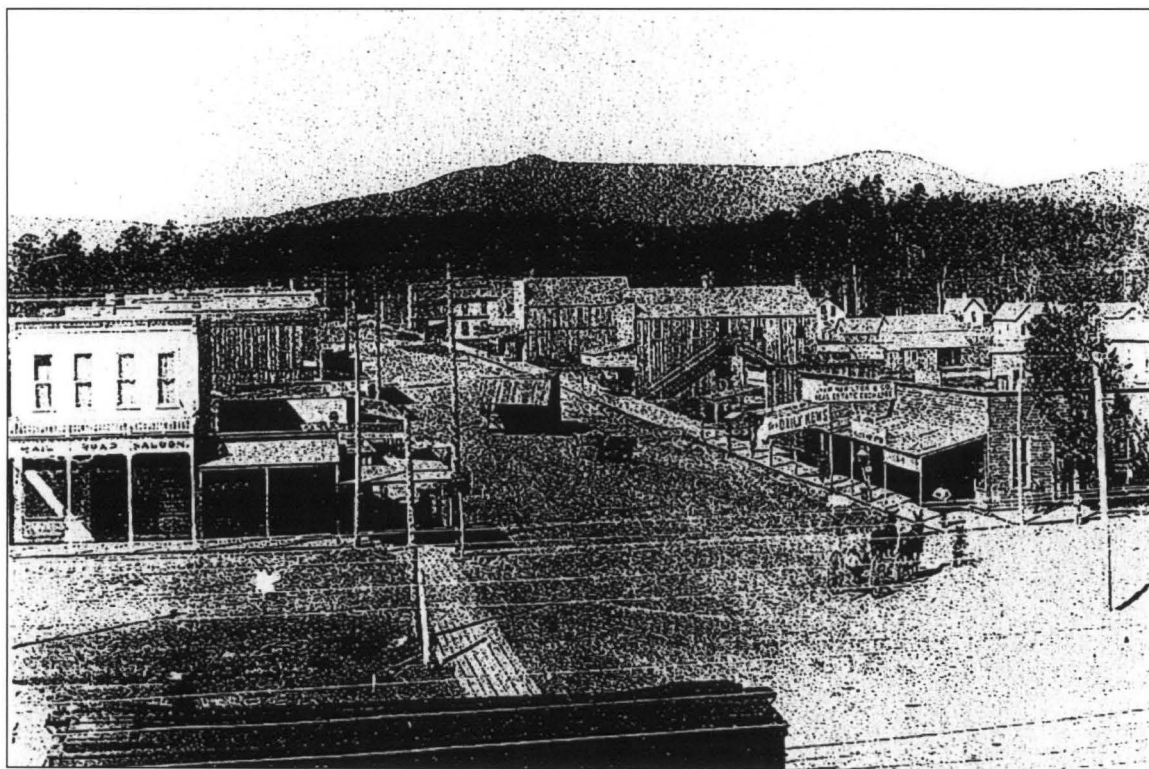


Figure 2. North Mena St. viewing north, ca. 1900. [Courtesy of Mannon, Joe and Harold Coogan. *A Pictorial History of Mena-Polk County, Arkansas: 1896-1936*. Unknown binding, 1986.]

United States Department of the Interior
National Park Service

National Register of Historic Places Continuation Sheet

Section number Historic Page 3
 Photos

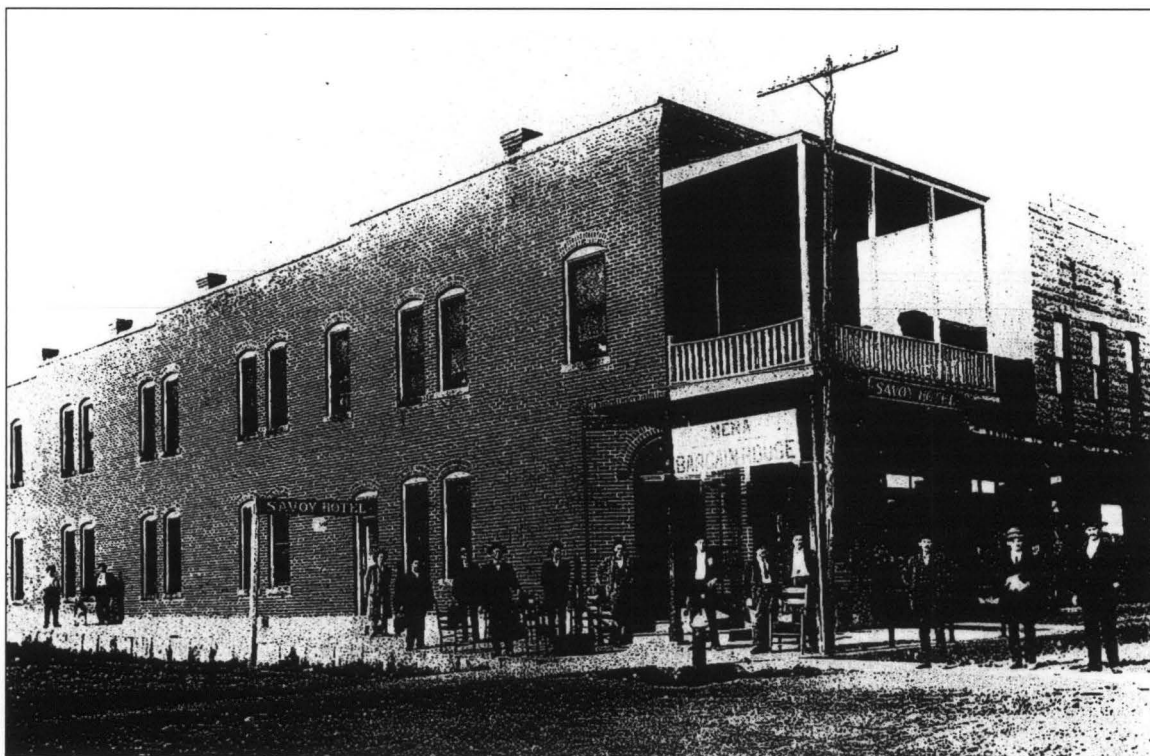


Figure 3. Savoy Hotel (PL0064) viewing northeast at corner of Sherwood Ave. and DeQueen St., 1906. [Courtesy of Coogan, Harold. *Mena Centennial History 1896-1996: A Photographic History of the City of Mena, Arkansas*. Looking Glass Press: Murfreesboro, Arkansas, 1996.]

United States Department of the Interior
National Park Service

National Register of Historic Places Continuation Sheet

Section number Historic Page 4
 Photos

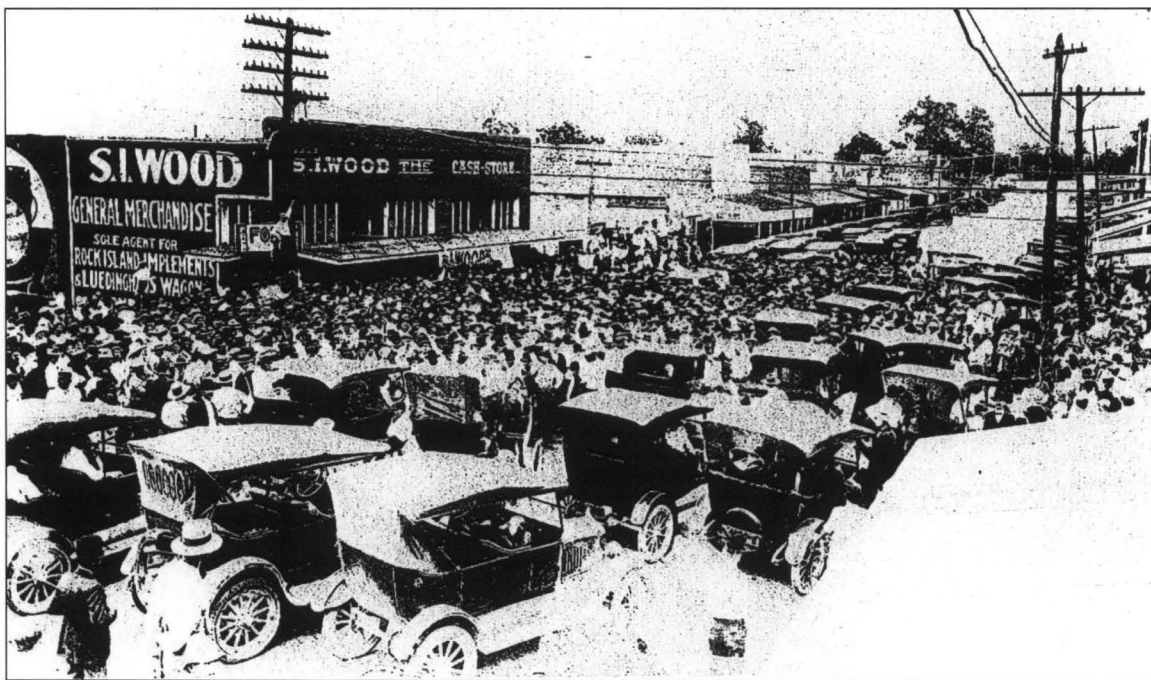


Figure 4. South Mena St. viewing south at S.I. Wood General Merchandise, which is now replaced with the Sears Building (PL0186), ca. 1920. [Courtesy of Coogan, Harold. *Mena Centennial History 1896-1996: A Photographic History of the City of Mena, Arkansas*. Looking Glass Press: Murfreesboro, Arkansas, 1996.]

United States Department of the Interior
National Park Service

National Register of Historic Places Continuation Sheet

Section number Historic Page 5
 Photos

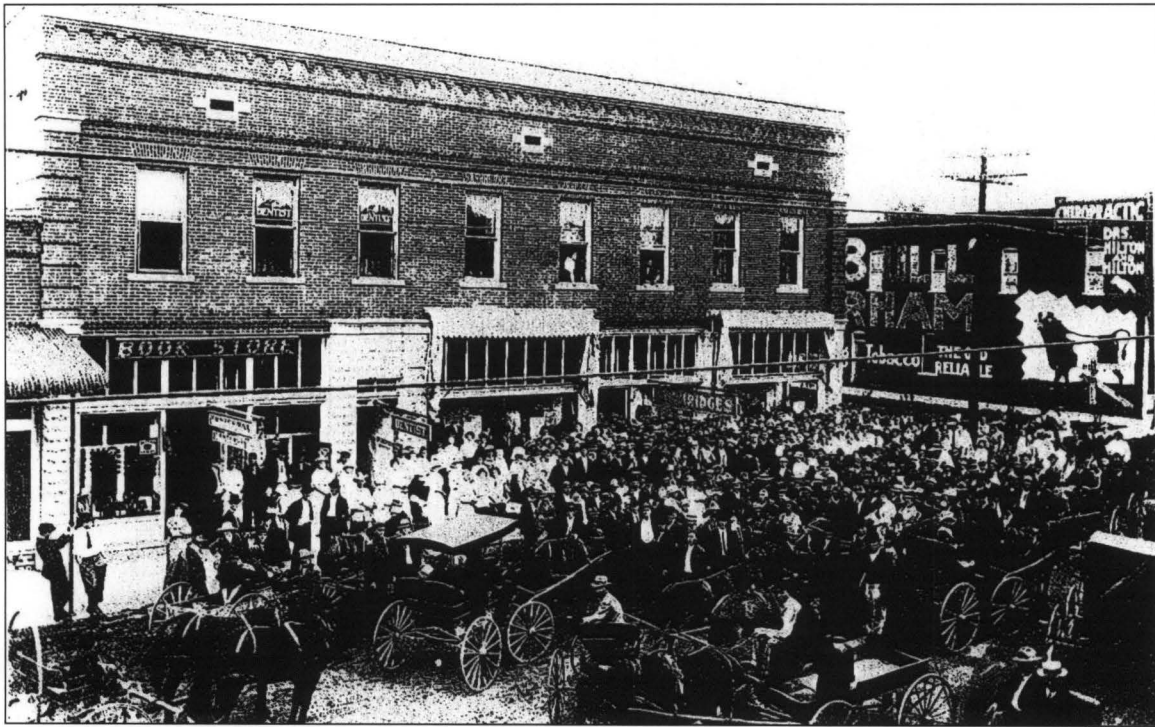


Figure 5. Lockridge Dry Goods Store (PL0032/PL0034) at corner of North Mena St. and Maple Ave., ca. 1900. [Courtesy of Coogan, Harold. *Mena Centennial History 1896-1996: A Photographic History of the City of Mena, Arkansas*. Looking Glass Press: Murfreesboro, Arkansas, 1996.]

United States Department of the Interior
National Park Service

National Register of Historic Places Continuation Sheet

Section number Historic Page 6
 Photos

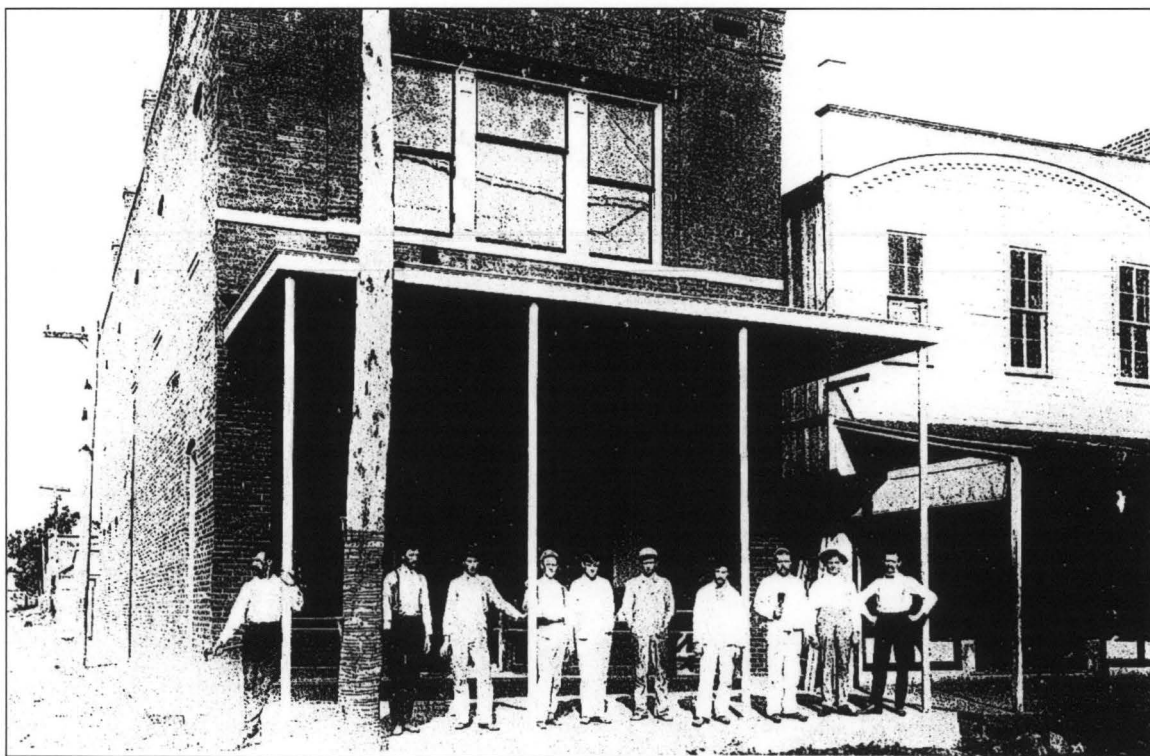


Figure 6. View of 711 Mena St. (PL0044) just after its construction, ca. 1900. [Courtesy of Coogan, Harold. *Mena Centennial History 1896-1996: A Photographic History of the City of Mena, Arkansas*. Looking Glass Press: Murfreesboro, Arkansas, 1996.]

United States Department of the Interior
National Park Service

National Register of Historic Places Continuation Sheet

Section number Historic Page 7
 Photos



Figure 7. Farmers and Merchants Bank, originally National Bank of Mena (PL0042), at 700 Mena St. (now building only has first floor), 1922. [Courtesy of Mannon, Joe and Harold Coogan. *A Pictorial History of Mena-Polk County, Arkansas: 1896-1936*. Unknown binding, 1986.]

United States Department of the Interior
National Park Service

National Register of Historic Places Continuation Sheet

Section number	Historic Photos	Page	8
----------------	--------------------	------	---



Figure 8. View of the west side of the 600 block of North Mena St., d. 1906. [Courtesy of Coogan, Harold. *Mena Centennial History 1896-1996: A Photographic History of the City of Mena, Arkansas*. Looking Glass Press: Murfreesboro, Arkansas, 1996.]

United States Department of the Interior
National Park Service

National Register of Historic Places Continuation Sheet

Section number Historic Page 9
 Photos



Figure 9. View of the east side of the 600 block of North Mena St., d. 1906. [Courtesy of Coogan, Harold. *Mena Centennial History 1896-1996: A Photographic History of the City of Mena, Arkansas*. Looking Glass Press: Murfreesboro, Arkansas, 1996.]

United States Department of the Interior
National Park Service

National Register of Historic Places Continuation Sheet

Section number	Historic Photos	Page	10
----------------	--------------------	------	----



Figure 10. View of the Planter's State Bank (PL0045) located at 812 South Mena St., d. 1911. [Courtesy of Coogan, Harold. *Mena Centennial History 1896-1996: A Photographic History of the City of Mena, Arkansas*. Looking Glass Press: Murfreesboro, Arkansas, 1996.]

United States Department of the Interior
National Park Service

National Register of Historic Places Continuation Sheet

Section number Historic Page 11
 Photos _____

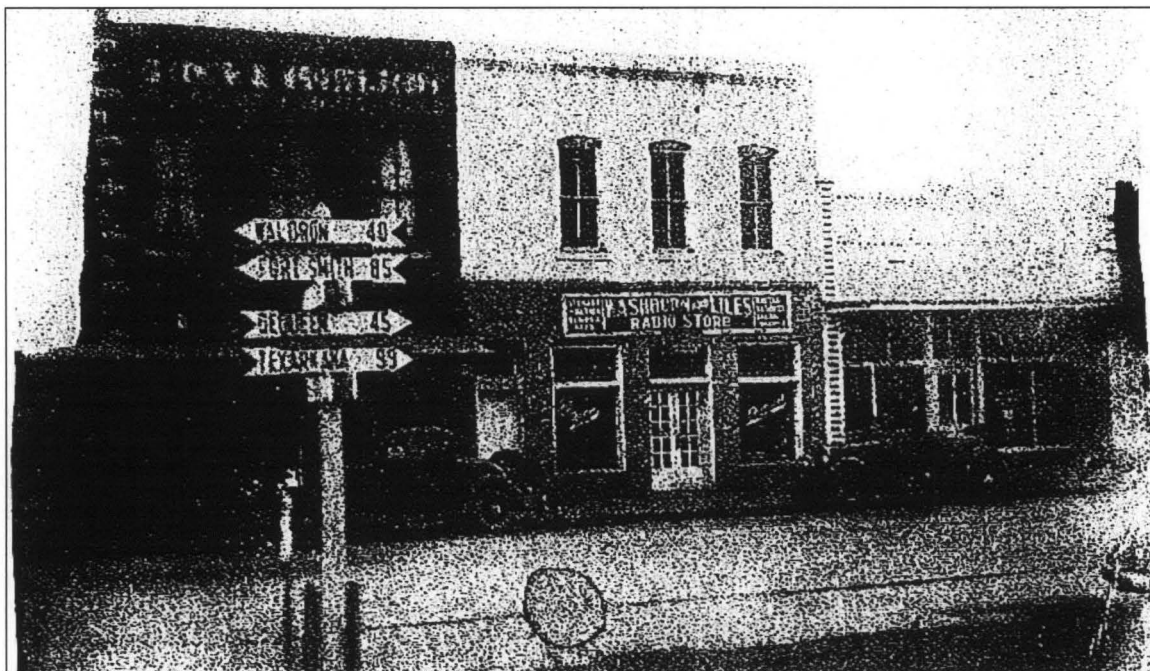


Figure 11. View of the Washburn and Liles Radio Store (PL0271) located at 502 Highway 71 South (historically known as Pickering Ave.), ca. 1930. [Courtesy of Mannon, Joe and Harold Coogan. *A Pictorial History of Mena-Polk County, Arkansas: 1896-1936*. Unknown binding, 1986.]

United States Department of the Interior
National Park Service

National Register of Historic Places Continuation Sheet

Section number Historic Page 12
 Photos



Figure 12. Chrysler-Plymouth Building (PL0220) at west corner of Sherwood Ave. and Mena St., ca. 1945. [Courtesy of Coogan, Harold. *Mena Centennial History 1896-1996: A Photographic History of the City of Mena, Arkansas*. Looking Glass Press: Murfreesboro, Arkansas, 1996.]

United States Department of the Interior
National Park Service

National Register of Historic Places Continuation Sheet

Section number Historic Page 13
 Photos

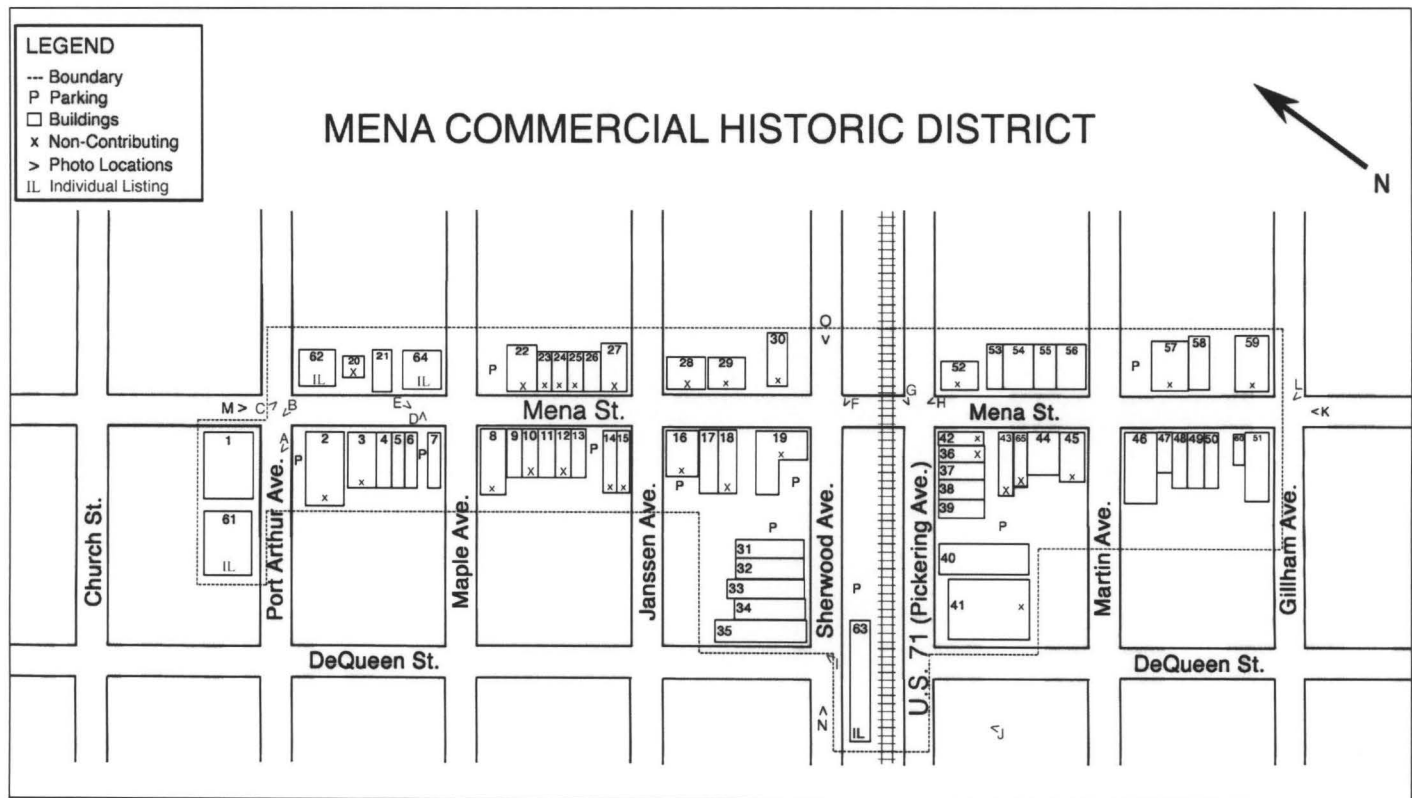


Figure 13. View of the Lyric Theatre (PL0037) located at 608-610 Mena St., ca. 1930. [Courtesy of Coogan, Harold. *Mena Centennial History 1896-1996: A Photographic History of the City of Mena, Arkansas*. Looking Glass Press: Murfreesboro, Arkansas, 1996.]

United States Department of the Interior
National Park Service

National Register of Historic Places Continuation Sheet

Section number Additional
 Documentation Page 1



UNITED STATES DEPARTMENT OF THE INTERIOR
NATIONAL PARK SERVICE

NATIONAL REGISTER OF HISTORIC PLACES
EVALUATION/RETURN SHEET

REQUESTED ACTION: NOMINATION

PROPERTY Mena Commercial Historic District
NAME:

MULTIPLE
NAME:

STATE & COUNTY: ARKANSAS, Polk

DATE RECEIVED: 4/08/09 DATE OF PENDING LIST: 4/27/09
DATE OF 16TH DAY: 5/12/09 DATE OF 45TH DAY: 5/22/09
DATE OF WEEKLY LIST:

REFERENCE NUMBER: 09000321

REASONS FOR REVIEW:

APPEAL: N DATA PROBLEM: N LANDSCAPE: N LESS THAN 50 YEARS: N
OTHER: N PDIL: N PERIOD: N PROGRAM UNAPPROVED: N
REQUEST: Y SAMPLE: N SLR DRAFT: Y NATIONAL: N

COMMENT WAIVER: ☒ N

☐ ACCEPT ☒ RETURN ☐ REJECT 5/12/2009 DATE

ABSTRACT/SUMMARY COMMENTS:

See Attached Comments

RECOM./CRITERIA Return - Growth

REVIEWER J. Grubbs

DISCIPLINE _____

TELEPHONE _____

DATE 5/12/2009

DOCUMENTATION see attached comments Y/N see attached SLR Y/N

If a nomination is returned to the nominating authority, the nomination is no longer under consideration by the NPS.



United States Department of the Interior

NATIONAL PARK SERVICE

1849 C Street, N.W.

Washington, D.C. 20240

IN REPLY REFER TO:

The United States Department of the Interior National Park Service

National Register of Historic Places Evaluation/Return Sheet

Property Name: Mena Commercial Historic District, Polk County, AR

Reference Number: 09000321

Reason for Return

This nomination is being returned for technical and substantive revision.

The nomination claims significance under Criteria A and C with areas of significance that include Architecture, Commerce, Transportation, Entertainment/Recreation, and Health/Medicine. It appears that the nomination preparer has confused function with significance; the mere presence of a theater or a train depot in the boundaries of a district does not automatically convey entertainment or transportation significance on the district as a whole. Each area of significance chosen needs to be both addressed and supported within the narrative of Section 8. In this case, none of the chosen areas of significance are substantiated specifically. There is no analysis of the architecture that comprises the district and no real substantiation of any of the marked areas of significance. However, there is a fairly good context for arguing that the district had commercial significance and there are hints of its significance as a transportation hub, but neither is adequately addressed.. The town was a regional trade center. Please refer to National Register Bulletin "How to Complete the National Register Registration Form," page 39, for guidance on selecting areas of significance.

The building stock of the district, apart from the two previously listed buildings, is unremarkable architecturally. If you wish to claim Architecture as an area of significance, please provide an architectural context for the 19th and 20th century buildings. How does this district compare to other commercial districts in the region? What are the characteristics of commercial architecture during the period of significance

Property: Mena Historic District, Polk County, Arkansas
Ref. No.: 09000321

and how does this collection of buildings help to exemplify the trends of architectural development during that time? Page 7-1 states that "...there are different phases of development for the town..." Perhaps the nomination can explore how the buildings in the district reflect these different phases more explicitly.

If you wish to pursue Transportation, Health/Medicine, or Entertainment/Recreation as areas of significance, a context for each area will need to be constructed and a justification on why the district as a whole reflects each of the areas of significance will need to be provided.

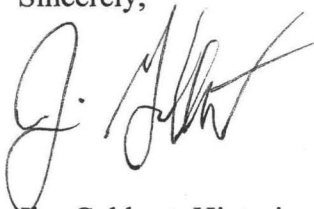
Do not use the period of significance as significant dates. If there are pivotal dates within the period of significance, list them and refer to them in the narrative. Also, the narrative refers to a number of events or personages that seem extraneous and after the period of significance.

Please delete "structure" from Section 5, classification. The use of "district" would encompass and structures, objects, etc. within the boundary.

The accompanying district map/photo key is not as accurate as we would prefer. The photo key should correspond to the actual photo vantage point. For instance, photo "J" is placed at the wrong location. There is no location marked for photo "L." Please correct the photo key map. Also, the photographic coverage leaves something to be desired. There are 12 photographs of the district. Four of the images (25%) depict previously individually listed properties at the expense of illustrating the district as a whole. For instance, there are no overall images of the district west of Janssen Avenue or of south Sherwood Avenue. Please consider the appropriate level of photographic coverage for these small, commercial districts.

We appreciate the opportunity to review this nomination and hope that you find these comments useful. Please feel free to contact me if you have any questions. I can be reached at (202) 354-2275 or email at <James_Gabbert@nps.gov>.

Sincerely,



Jim Gabbert, Historian
National Register of Historic Places
5/12/2009

UNITED STATES DEPARTMENT OF THE INTERIOR
NATIONAL PARK SERVICE

NATIONAL REGISTER OF HISTORIC PLACES
EVALUATION/RETURN SHEET

REQUESTED ACTION: RESUBMISSION

PROPERTY Mena Commercial Historic District
NAME:

MULTIPLE
NAME:

STATE & COUNTY: ARKANSAS, Polk

DATE RECEIVED: 06/29/09 DATE OF PENDING LIST:
DATE OF 16TH DAY: DATE OF 45TH DAY: 08/12/09
DATE OF WEEKLY LIST:

REFERENCE NUMBER: 09000321

REASONS FOR REVIEW:

APPEAL: N DATA PROBLEM: N LANDSCAPE: N LESS THAN 50 YEARS: N
OTHER: N PDIL: N PERIOD: N PROGRAM UNAPPROVED: N
REQUEST: N SAMPLE: N SLR DRAFT: N NATIONAL: N

COMMENT WAIVER: N

☒ ACCEPT ☐ RETURN ☐ REJECT 7/23/2009 DATE

ABSTRACT/SUMMARY COMMENTS:

Resubmission Addressed tech & substantive concerns by dropping
Areas of significance that were not substantiated.
Significant as commercial center for remote, rural western
part of state.

RECOM./CRITERIA Accept Crit A

REVIEWER J. Gilbert DISCIPLINE

Phone Date 7/23/2009

DOCUMENTATION see attached comments Y/☒ see attached SLR Y/☒

If a nomination is returned to the nominating authority, the nomination is no longer under consideration by the National Park Service.



1. STUDEBAKER SHOWROOM,
MENA COMMERCIAL HISTORIC DISTRICT
2. POLK COUNTY, ARKANSAS
3. KARA MILLS
4. MARCH 2006
5. ARKANSAS HISTORIC PRESERVATION PROGRAM,
LITTLE ROCK, ARKANSAS
6. STUDEBAKER SHOWROOM, 519 PORT ARTHUR AVENUE,
EAST FAÇADE LOOKING WEST
7. #A

Copyright 2008 Pan American

R 0 F 10 D132 Y000 M060 C000 X07.58



1. ESSO SERVICE STATION

MENA COMMERCIAL HISTORIC DISTRICT

2. POLK COUNTY, ARKANSAS

3. ANGIE CLIFTON

4. AUGUST 14, 2008

5. ARKANSAS HISTORIC PRESERVATION PROGRAM,
LITTLE ROCK, ARKANSAS

6. ESSO SERVICE STATION, 423 MENA STREET,
EAST FAÇADE LOOKING WEST

7. #B

Copyright 2008 Pan American

R 0 F 63 D160 Y000 M065 C002 X08.84



1. ELKS LODGE, 500 MENA STREET, EAST FAÇADE LOOKING
1. ELKS LODGE, MENA COMMERCIAL HISTORIC DISTRICT
2. POLK COUNTY, ARKANSAS
3. HOLLY HOPE
4. OCT. 1997
5. ARKANSAS HISTORIC PRESERVATION PROGRAM,
LITTLE ROCK, ARKANSAS
6. ELKS LODGE, 500 MENA STREET, WEST FAÇADE
LOOKING EAST
7. #C

Copyright 2008 Pan American

R 0 F 13 D138 Y000 M060 C000 X07.54



1. OLD POST OFFICE,
MENA COMMERCIAL HISTORIC DISTRICT
2. POLK COUNTY, ARKANSAS
3. KENNETH STORY
4. MARCH 1991
5. ARKASAS HISTORIC PRESERVATION PROGRAM,
LITTLE ROCK, ARKANSAS
6. OLD POST OFFICE, 520 NORTH MENA STREET,
WEST FAÇADE LOOKING EAST
7. #D

Copyright 2008 Pan American

R 0 F 7 D149 Y000 H075 C000 X07.53



1. CITIZENS BANK

MENA COMMERCIAL HISTORIC DISTRICT

2. POLK COUNTY, ARKANSAS

3. ANGIE CLIFTON

4. AUGUST 14, 2008

5. ARKANSAS HISTORIC PRESERVATION PROGRAM,
LITTLE ROCK, ARKANSAS

6. CITIZENS BANK, 523 MENA STREET,
EAST FAÇADE LOOKING WEST

7. #E

Copyright 2008 Pan American

R 0 F 61 D155 Y000 M065 C000 X08.84



1. STREETSCAPE, MENA COMMERCIAL HISTORIC DISTRICT
2. POLK COUNTY, ARKANSAS
3. ^{MENA} ANGIE CLIFTON
4. ^{STREETSCAPE J} AUGUST 21, 2008
5. ^{08/21/08} ARKANSAS HISTORIC PRESERVATION PROGRAM,
LITTLE ROCK, ARKANSAS
6. VIEW FROM THE INTERSECTION OF MENA STREET
AND SHERWOOD AVENUE, LOOKING SOUTHWEST
7. # F

Copyright 2008 Pan American

R 0 F 52 D160 Y000 M065 C000 X00.84



1. STREETSCAPE, MENA COMMERCIAL HISTORIC DISTRICT
2. POLK COUNTY, ARKANSAS.
3. ANGIE CLIFTON
4. ~~STREETSCAPE~~ AUGUST 21, 2008
5. ~~OKLAHOMA~~ ARKANSAS HISTORIC PRESERVATION PROGRAM,
LITTLE ROCK, ARKANSAS.
6. VIEW FROM THE INTERSECTION OF THE 500 BLOCK
OF U.S. 71 AND MENA STREET, LOOKING SOUTH.
7. #6

Copyright 2008 Pan American

R 0 F 51 D160 Y000 M065 C000 X08.84



1. STREETSCAPE, MENA COMMERCIAL HISTORIC DISTRICT
2. POLK COUNTY, ARKANSAS
3. ANGIE CLIFTON
4. AUGUST 21, 2008
5. ARKANSAS HISTORIC PRESERVATION PROGRAM,
LITTLE ROCK, ARKANSAS
6. VIEW FROM THE INTERSECTION OF THE 700 BLOCK
OF MENA STREET AND U.S. 71, LOOKING NORTHWEST.
7. #H

Copyright 2008 Pan American

R 0 F 48 D160 Y000 M072 C000 X08.84



1. SAVOY HOTEL

MENA COMMERCIAL HISTORIC DISTRICT

2. POLK COUNTY, ARKANSAS

3. ANGIE CLIFTON

4. AUGUST 16, 2008

5. ARKANSAS HISTORIC PRESERVATION PROGRAM,
LITTLE ROCK, ARKANSAS

6. SAVOY HOTEL, 523 SHERWOOD AVENUE,
SOUTH FAÇADE LOOKING NORTH

7. # I

Copyright 2008 Pan American

R 0 F 62 D155 Y000 M077 C000 X08.84



1. KANSAS CITY SOUTHERN DEPOT,
MENA COMMERCIAL HISTORIC DISTRICT AVENUE
WEST OF INTERSECTION
2. POLK COUNTY, ARKANSAS
3. KEN STORY
4. MARCH 1990
5. ARKANSAS HISTORIC PRESERVATION PROGRAM,
LITTLE ROCK, ARKANSAS
6. KANSAS CITY SOUTHERN DEPOT, WEST OF INTERSECTION
OF PICKERING AVENUE AND MENA STREET, SOUTH FAÇADE
LOOKING NORTH
7. #J

Copyright 2008 Pan American
R 0 F 12 D085 Y000 M060 C000 X07.54



1. STREETSCAPE, MENA COMMERCIAL HISTORIC DISTRICT
2. POLK COUNTY, ARKANSAS
3. ANGIE CLIFTON
4. AUGUST 21, 2008
5. ARKANSAS HISTORIC PRESERVATION PROGRAM, LITTLE ROCK, ARKANSAS
6. VIEW FROM THE INTERSECTION OF MENA STREET AND GILLHAM AVENUE, LOOKING NORTHWEST
7. # K

Copyright 2008 Pan American

R 0 F 44 D152 Y000 M060 C000 X08.84



1. PHILPOT MIDDLETON CHEVROLET DEALERSHIP

MENA COMMERCIAL HISTORIC DISTRICT

2. POLK COUNTY, ARKANSAS

3. ANGIE CLIFTON

4. AUGUST 19, 2008

5. ARKANSAS HISTORIC PRESERVATION PROGRAM,
LITTLE ROCK, ARKANSAS

6. PHILPOT MIDDLETON CHEVROLET DEALERSHIP,
923 MENA STREET, EAST FAÇADE LOOKING WEST

7. #L

Copyright 2008 Pan American

R 0 F 60 D156 Y000 M004 C000 X08.84



1. STREET SCAPES, MENA COMMERCIAL HISTORIC DISTRICT
2. POLK COUNTY, ARKANSAS
3. ANGIE CLIFTON
4. MAY 20, 2009
5. ARKANSAS HISTORIC PRESERVATION PROGRAM, LITTLE ROCK, ARKANSAS
6. VIEW FROM THE NORTHWEST END OF MENA STREET, LOOKING SOUTHEAST
7. # M

R 0 F 7 D106 Y000 M074 C000 X08.79

Copyright 2009 Pan American



1. STREETSCAPE, MENA COMMERCIAL HISTORIC DISTRICT
2. POLK COUNTY, ARKANSAS
3. ANGIE CLIFTON
4. MAY 20, 2009
5. ARKANSAS HISTORIC PRESERVATION PROGRAM
LITTLE ROCK, ARKANSAS
6. VIEW FROM THE SOUTH END OF SHERWOOD
AVENUE, LOOKING SOUTHWEST
7. #N

R 0 F 10 D101 Y000 M102 C000 X008.79

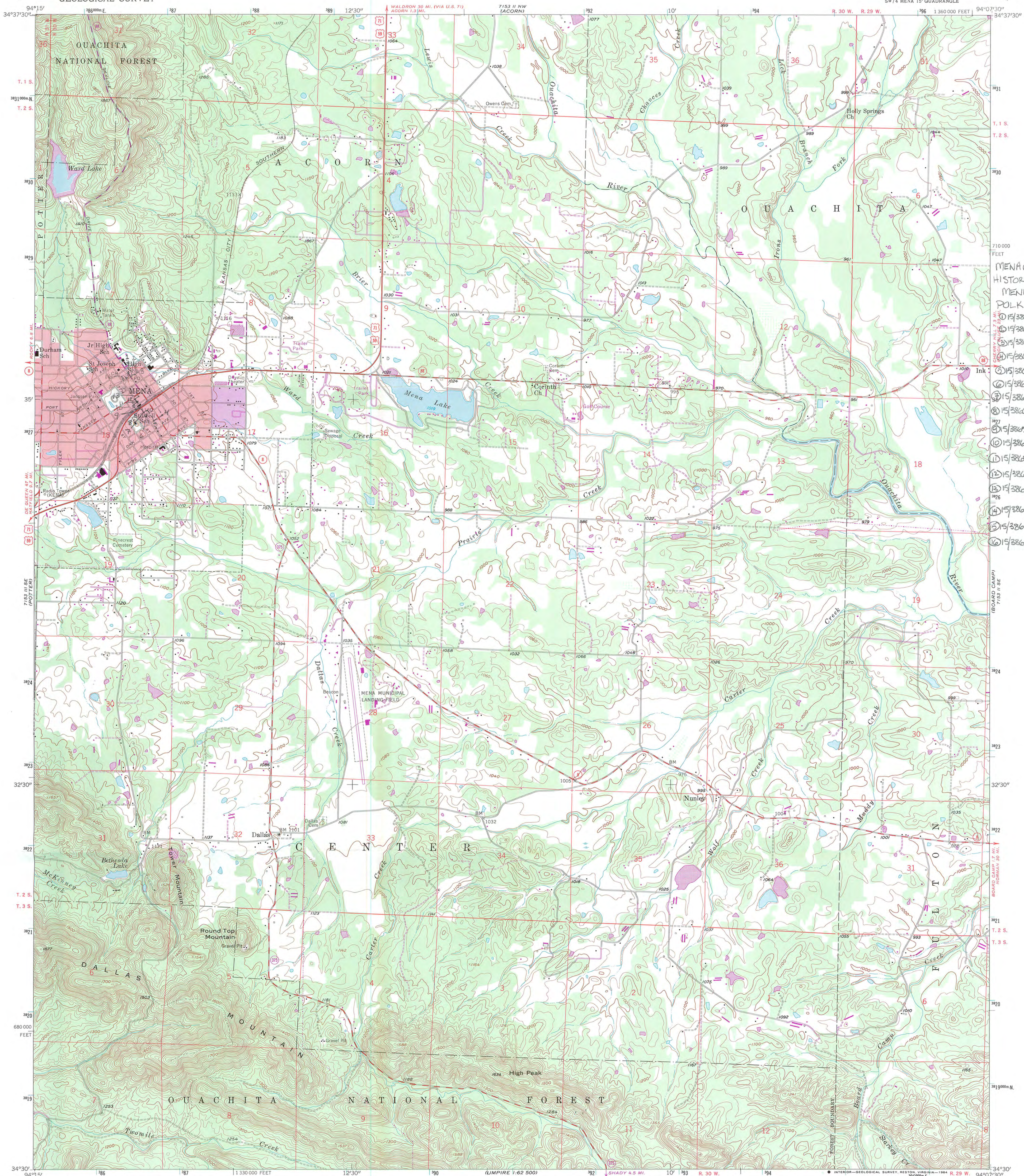
Copyright 2009 Pan American



1. STREETSCAPE, MENA COMMERCIAL HISTORIC DISTRICT
2. POLK COUNTY, ARKANSAS
3. ANGIE CLIFTON
4. MAY 20, 2009
5. ARKANSAS HISTORIC PRESERVATION PROGRAM, LITTLE ROCK, ARKANSAS
6. VIEW FROM THE NORTH END OF SHERWOOD AVENUE, LOOKING SOUTHWEST.
7. #0

R 0 F 11 D095 Y000 M087 C000 X08.79

Copyright 2009 Pan American



Mapped, edited, and published by the Geological Survey
Control by USGS and USC&GS

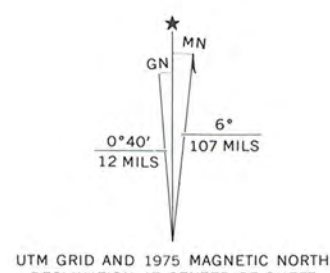
Topography from aerial photographs by multiplex methods
Aerial photographs taken 1955. Field check 1958

Polyconic projection. 1927 North American Datum
10,000-foot grid based on Arkansas coordinate system, south zone
1000-meter Universal Transverse Mercator grid ticks,

zone 15, shown in blue
To place on the predicted North American Datum 1983,
move the projection lines 7 meters south and
18 meters east as shown by dashed corner ticks

There may be private inholdings within the boundaries of
the National or State reservations shown on this map

Red tint indicates areas in which only landmark buildings are shown
Unchecked elevations are shown in brown



SCALE 1:24 000
CONTOUR INTERVAL 20 FEET
NATIONAL GEODETIC VERTICAL DATUM OF 1929

THIS MAP COMPLIES WITH NATIONAL MAP ACCURACY STANDARDS
FOR SALE BY U. S. GEOLOGICAL SURVEY, DENVER, COLORADO 80225, OR RESTON, VIRGINIA 22092
AND ARKANSAS GEOLOGICAL COMMISSION, LITTLE ROCK, ARKANSAS 72204
A FOLDER DESCRIBING TOPOGRAPHIC MAPS AND SYMBOLS IS AVAILABLE ON REQUEST

Revisions shown in purple compiled from aerial photographs
taken 1975. This information not field checked
Purple tint indicates extensions of urban areas



ROAD CLASSIFICATION
Heavy-duty ——— Light-duty ———
Medium-duty ——— Unimproved dirt ———
U. S. Route ——— State Route ———

MENA, ARK.
SW 1/4 MENA 15' QUADRANGLE
N 3430—W 9407.5/7.5
1958
PHOTOREVISED 1975
AMS 7153 II SW—SERIES V884



**The Department of
Arkansas
Heritage**

Mike Beebe
Governor

Cathie Matthews
Director

Arkansas Arts Council

*

Arkansas Natural Heritage
Commission

*

Delta Cultural Center

*

Historic Arkansas Museum

*

Mosaic Templars
Cultural Center

*

Old State House Museum



**Arkansas Historic
Preservation Program**

1500 Tower Building
323 Center Street
Little Rock, AR 72201
(501) 324-9880
fax: (501) 324-9184
tdd: (501) 324-9811

e-mail:

info@arkansaspreservation.org

website:

www.arkansaspreservation.com

An Equal Opportunity Employer



April 1, 2009

Dr. Janet Matthews
Chief of Registration
United States Department of the Interior
National Register of Historic Places
National Park Service
8th Floor
1201 Eye Street, NW
Washington, DC 20005

RE: Mena Commercial Historic District – Mena, Polk County,
Arkansas

Dear Dr. Matthews:

We are enclosing for your review the above-referenced nomination. The Arkansas Historic Preservation Program has complied with all applicable nominating procedures and notification requirements in the nomination process.

If you need further information, please call Ralph S. Wilcox of my staff at (501) 324-9787. Thank you for your cooperation in this matter.

Sincerely,

Cathie Matthews
State Historic Preservation Officer

CM:rsw

Enclosure





The Department of Arkansas Heritage

Mike Beebe
Governor

Cathie Matthews
Director

Arkansas Arts Council

*

Arkansas Natural Heritage
Commission

*

Delta Cultural Center

*

Historic Arkansas Museum

*

Mosaic Templars
Cultural Center

*

Old State House Museum



Arkansas Historic Preservation Program

1500 Tower Building
323 Center Street
Little Rock, AR 72201
(501) 324-9880
fax: (501) 324-9184
tdd: (501) 324-9811

e-mail:

info@arkansaspreservation.org

website:

www.arkansaspreservation.com

An Equal Opportunity Employer



June 24, 2009

Dr. Janet Matthews
Chief of Registration
United States Department of the Interior
National Register of Historic Places
National Park Service
8th Floor
1201 Eye Street, NW
Washington, DC 20005



RE: Mena Commercial Historic District – Mena, Polk County,
Arkansas

Dear Dr. Matthews:

We are enclosing for your review the revised above-referenced nomination. The Arkansas Historic Preservation Program has complied with all applicable nominating procedures and notification requirements in the nomination process.

If you need further information, please call Ralph S. Wilcox of my staff at (501) 324-9787. Thank you for your cooperation in this matter.

Sincerely,

Cathie Matthews
State Historic Preservation Officer

CM:rsw

Enclosure

United States Department of the Interior
National Park Service

National Register of Historic Places Continuation Sheet

Section number 5 Page 1

The revised resource count for the Mena Commercial Historic District is as follows.

Contributing	Noncontributing	
30	30	buildings
	1	sites
		structures
		objects
30	31	Total

In addition, the following buildings within the district are individually listed and are not included in the C/NC counts above:

Elks Lodge at 500 Mena Street – Listed on June 4, 1998.

Mena Kansas City-Southern Depot at Mena and Pickering streets – Listed on June 5, 1991.

Old Post Office (City Hall) at 520 Mena Street – Listed on June 5, 1991.

Studebaker Showroom at 519 Port Arthur – Listed on June 9, 2000.

United States Department of the Interior
National Park Service

National Register of Historic Places Continuation Sheet

Section number 7 Page 1

The purpose of this additional documentation is to update the resource counts of the nomination and to change the Contributing/Non-Contributing status of five buildings in the district.

- 1) *Building at 523 Mena Street* (Site #PL0264) – Mena was struck by a tornado on April 9, 2009, and this building was apparently destroyed by the tornado or demolished shortly after. During a site visit by Arkansas Historic Preservation Program staff in September 2009, the site of this building was discovered to be a vacant lot.
- 2) *Carpet Depot at 605 Mena Street* (Site #PL0265) – Additional research on this building has recently revealed that the vast majority of the front façade was reconstructed c.2000. Due to the recent date of the current façade, the Carpet Depot Building should be considered non-contributing.
- 3) *Building at 711 Mena Street* (Site #PL0044) – This building was mistakenly coded as non-contributing in the original nomination, and should actually be considered contributing.
- 4) *Building at 510 Mena Street* (Site #PL0142) – The majority of this building was destroyed in the April 9, 2009, tornado leaving only a few interior walls standing. As a result, it should be considered non-contributing.
- 5) *Skyline Café at 620 Mena Street* (Site #PL0267) – The Skyline Café was also heavily damaged during the April 9, 2009, tornado. With the exception of the front façade, the rest of the building was rebuilt, which included altering the original roofline of the building. Due to the number of alterations, the building should now be considered non-contributing.

UNITED STATES DEPARTMENT OF THE INTERIOR
NATIONAL PARK SERVICE

NATIONAL REGISTER OF HISTORIC PLACES
EVALUATION/RETURN SHEET

REQUESTED ACTION: ADDITIONAL DOCUMENTATION

PROPERTY Mena Commercial Historic District
NAME:

MULTIPLE
NAME:

STATE & COUNTY: ARKANSAS, Polk

DATE RECEIVED:

12.11.09
4/08/09

DATE OF PENDING LIST:

DATE OF 16TH DAY:

DATE OF 45TH DAY:

5/23/09

DATE OF WEEKLY LIST:

REFERENCE NUMBER: 09000321

REASONS FOR REVIEW:

APPEAL: N DATA PROBLEM: N LANDSCAPE: N LESS THAN 50 YEARS: N
OTHER: N PDIL: N PERIOD: N PROGRAM UNAPPROVED: N
REQUEST: N SAMPLE: N SLR DRAFT: N NATIONAL: N

COMMENT WAIVER: N

___ACCEPT ___RETURN ___REJECT _____DATE

ABSTRACT/SUMMARY COMMENTS:

Additional Documentation Approved

RECOM./CRITERIA

Accept

REVIEWER

Edson Beall

DISCIPLINE

Historian

TELEPHONE

DATE

12-30-09

DOCUMENTATION see attached comments Y/N see attached SLR Y/N

If a nomination is returned to the nominating authority, the nomination is no longer under consideration by the NPS.



The Department of
**Arkansas
Heritage**

Mike Beebe
Governor

Cathie Matthews
Director

Arkansas Arts Council

*

Arkansas Natural Heritage
Commission

*

Delta Cultural Center

*

Historic Arkansas Museum

*

Mosaic Templars
Cultural Center

*

Old State House Museum



Arkansas Historic
Preservation Program

1500 Tower Building
323 Center Street
Little Rock, AR 72201
(501) 324-9880
fax: (501) 324-9184
tdd: (501) 324-9811

e-mail:

info@arkansaspreservation.org

website:

www.arkansaspreservation.org

An Equal Opportunity Employer



October 29, 2009

Dr. Janet Matthews
Chief of Registration
United States Department of the Interior
National Register of Historic Places
National Park Service
8th Floor
1201 Eye Street, NW
Washington, DC 20005



RE: Mena Commercial Historic District Additional
Documentation – Mena, Polk County, Arkansas

Dear Dr. Matthews:

We are enclosing for your review the above-referenced nomination. The Arkansas Historic Preservation Program has complied with all applicable nominating procedures and notification requirements in the nomination process.

If you need further information, please call Ralph S. Wilcox of my staff at (501) 324-9787. Thank you for your cooperation in this matter.

Sincerely,

Cathie Matthews
State Historic Preservation Officer

CM:rsw

Enclosure



MENA COMMERCIAL HISTORIC DISTRICT

POLK COUNTY, AR

RALPH S. WILCOX

SEPTEMBER 2009

ARKANSAS HISTORIC PRESERVATION PROGRAM, LITTLE ROCK, AR
BUILDING AT 510 MENA STREET LOOKING NORTHEAST



MENA COMMERCIAL HISTORIC DISTRICT

POLK COUNTY, AR

RALPH S. WILCOX

SEPTEMBER 2009

ARKANSAS HISTORIC PRESERVATION PROGRAM, LITTLE ROCK, AR

CARPET DEPOT LOOKING SOUTHWEST



MENA COMMERCIAL HISTORIC DISTRICT

POLK COUNTY, AR

RALPH S. WILCOX

SEPTEMBER 2009

ARKANSAS HISTORIC PRESERVATION PROGRAM, LITTLE ROCK, AR
SKYLINE CAFÉ LOOKING NORTHEAST



MENA COMMERCIAL HISTORIC DISTRICT

POLK COUNTY, AR

RALPH S. WILCOX

SEPTEMBER 2009

ARKANSAS HISTORIC PRESERVATION PROGRAM, LITTLE ROCK, AR

BUILDING AT 711 MENA STREET LOOKING SOUTHWEST