



- 1) Gubser-Schuchter House, GERMAN SETTLEMENT
PROPERTIES FOUR MILE CREEK AREA
- 2) Four Mile Pike, Campbell County, Ky.
- 3) Edward A. Chappell
- 4) May, 1979
- 5) Kentucky Heritage Council
- 6) South elevation, looking North
- 7) Photo #51



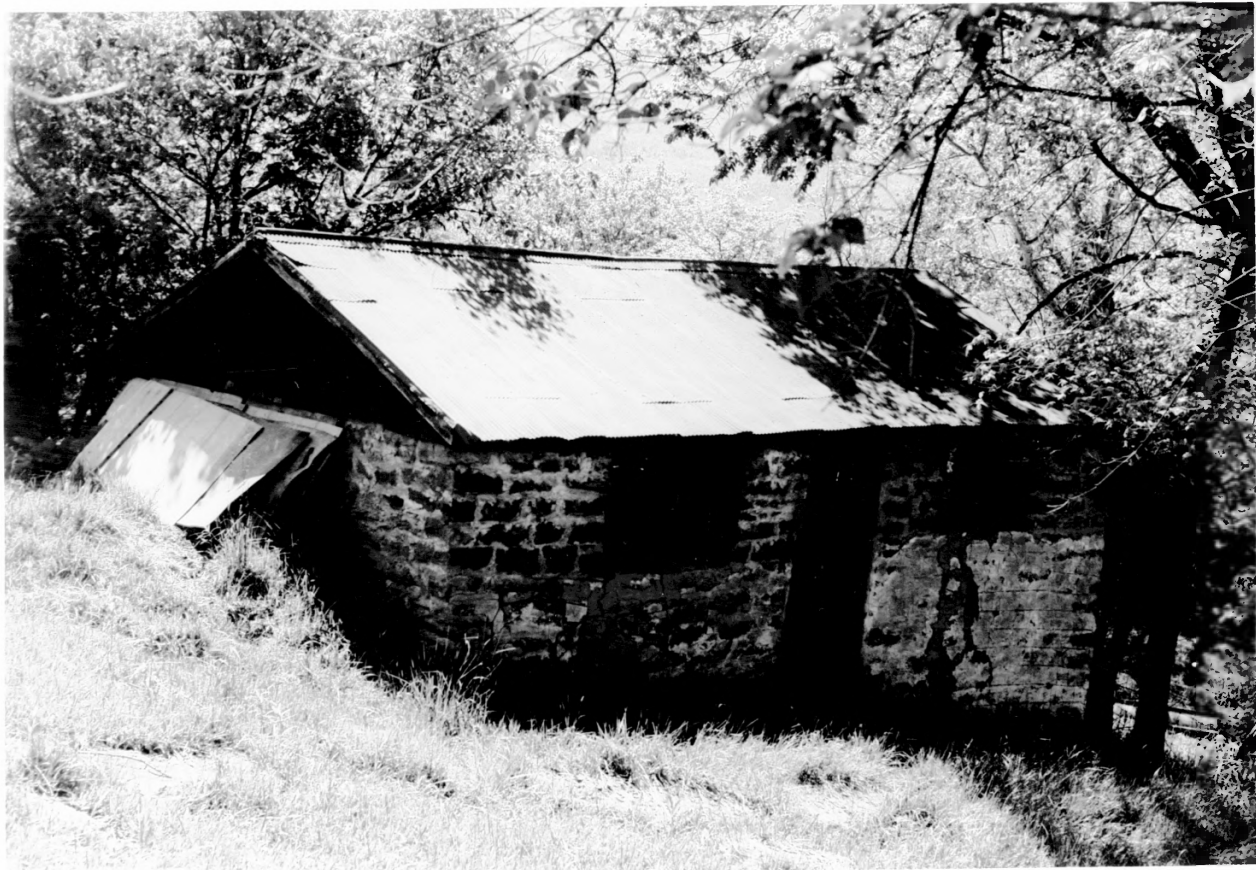
- 1) Gubser-Schuchter House, GERMAN SETTLEMENT
PROPERTIES FOUR MILE CREEK AREA
- 2) Four Mile Pike, Campbell County, Ky.
- 3) Edward A. Chappell
- 4) May, 1979
- 5) Kentucky Heritage Council
- 6) Smokehouse and rear elevation, looking W
- 7) Photo #52



- 1) Gubser-Schuchter House, GERMAN SETTLEMENT
PROPERTIES FOUR MILE CREEK AREA
- 2) Four Mile Pike, Campbell County, Kentucky
- 3) Edward A. Chappell
- 4) May, 1979
- 5) Kentucky Heritage Council
- 6) Stone smokehouse and wall, looking north
- 7) Photo #53



- 1) Gubser-Schuchter House, GERMAN SETTLEMENT
PROPERTIES FOUR MILE CREEK AREA
- 2) Four Mile Pike, Campbell County, Kentucky
- 3) Edward A. Chappell
- 4) May, 1979
- 5) Kentucky Heritage Council
- 6) Gubser-Schuchter barn, looking south
- 7) Photo #54



- 1) Gubser-Schuchter House, GERMAN SETTLEMENT
PROPERTIES FOUR MILE CREEK AREA
- 2) Four Mile Pike, Campbell County, Ky.
- 3) Edward A. Chappell
- 4) May, 1979
- 5) Kentucky Heritage Council
- 6) Stone poultry house, looking southeast
- 7) Photo #55