

Apartment Hotels in Birmingham, Alabama 1900-1930  
Thematic Group Nomination

1. CLARIDGE MANOR APARTMENTS

1100 27th Street South  
Birmingham, Jefferson County

Owner: Claridge Manor, Ltd.  
202 N. Foster Street  
Dothan, Alabama 36301

UTM: 16/519880/3707020

Legal Description: lots 1 & 2, Blk 894,  
a trapezoid, 250' and 290' x 150'

Acreage: .93

---

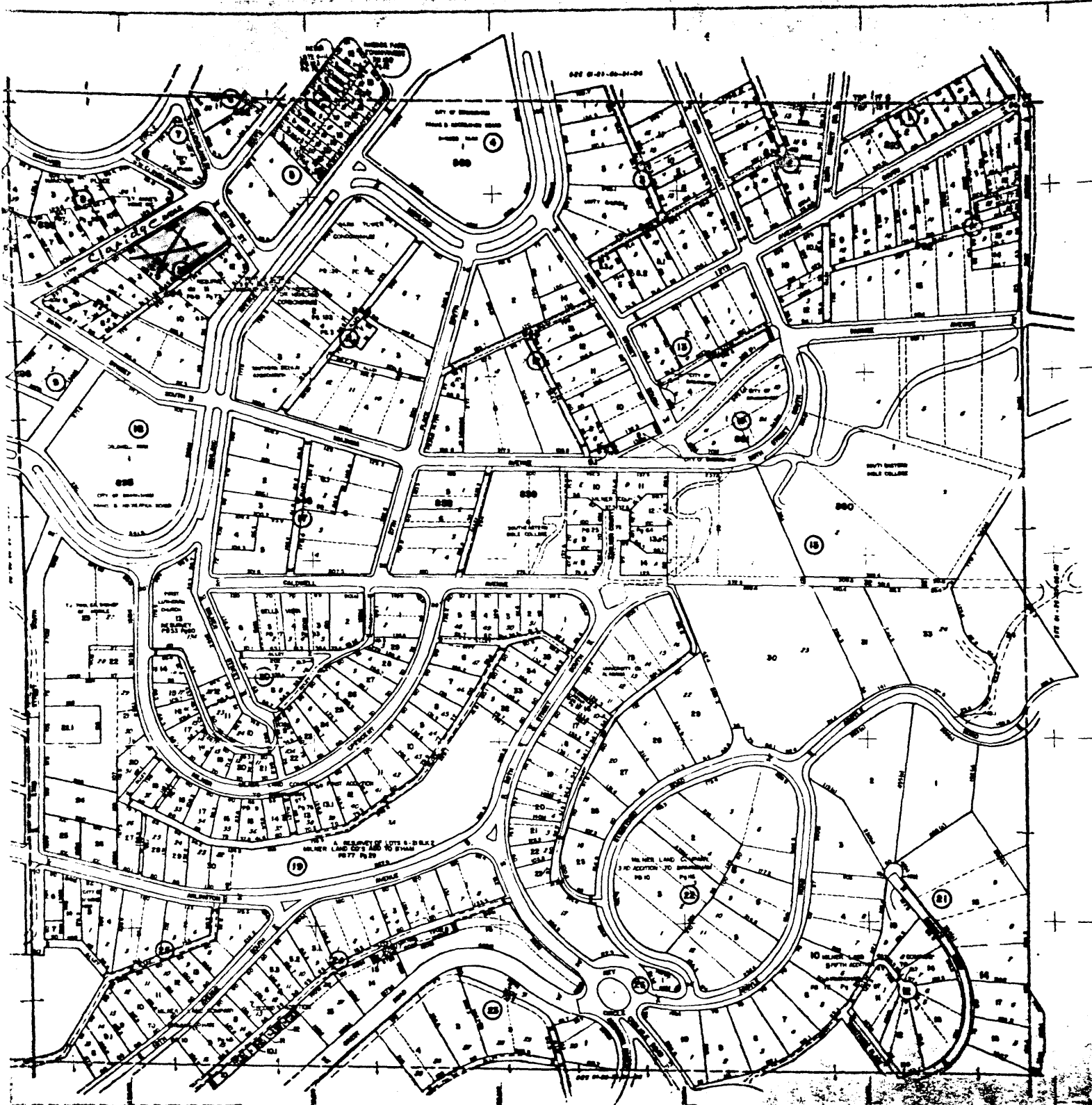
c. 1924

Architect: Raymond C. Snow

---

Significance and History: Constructed in 1924, the Claridge is one of four examples of apartment hotels in Birmingham. It was developed by G. L. Miller and Company of Atlanta and is not only an excellent example of the type but also represents the mid-1920s boom in such construction. Its services included a formal dining area, maid and valet services (for which servant's quarters were located in the basement and which remain relatively intact), silent butlers, lobby and landscaped lawn.

Description: The Claridge is a ten-story brick structure with rounded front entrance and Colonial Revival styling. Notable exterior details include a cornice with dentil molding and a series of terra cotta garlands above the second floor. Interior features include marble floors in the front entrance and lobby, louvered doors, French doors (most of which are intact) between rooms, glass and brass doorknobs, multiple wood and glass kitchen cabinets, a brass stair rail in the front entrance, oak floors in the rooms, and checkerboard tile in the front entrance office.



Apartment/Hotels in Birmingham 1900-1930  
 Scale 1"=400' 20' x 20' x 10'

Clarice Howard

State of Alabama  
 Department of Revenue, Ad Valorem Tax Division