



NO
PARKING
IN ZONE
1989

Bradley
Perdue

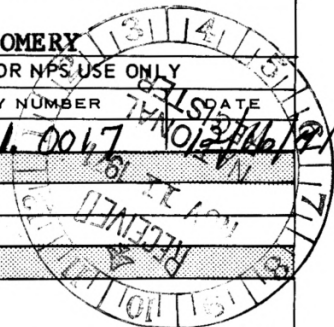
NO
STOPPING
OR
STANDING
←
7-9 A.M.

TOW AWAY

**NATIONAL REGISTER OF HISTORIC PLACES
 PROPERTY PHOTOGRAPH FORM**

(Type all entries - attach to or enclose with photograph)

STATE	ALABAMA
COUNTY	MONTGOMERY
FOR NPS USE ONLY	
ENTRY NUMBER	11.12.01.0047



SEE INSTRUCTIONS

1. NAME

COMMON: **PERRY STREET HISTORIC DISTRICT**
 AND/OR HISTORIC:

2. LOCATION

STREET AND NUMBER:

CITY OR TOWN:

MONTGOMERY

STATE:	CODE	COUNTY:	CODE
ALABAMA	01	MONTGOMERY	101

3. PHOTO REFERENCE

PHOTO CREDIT: **ALABAMA HISTORICAL COMMISSION**

DATE OF PHOTO: **1971**

NEGATIVE FILED AT: **ALABAMA HISTORICAL COMMISSION
 MONTGOMERY, ALABAMA**

4. IDENTIFICATION

DESCRIBE VIEW, DIRECTION, ETC.

Victorian Houses on Perry Street, face east



NATIONAL REGISTER OF HISTORIC PLACES
PROPERTY PHOTOGRAPH FORM

(Type all entries - attach to or enclose with photograph)

STATE	ALABAMA
COUNTY	MONTGOMERY
ENTRY NUMBER	71-15-00067A
DATE	5/16/71

RECEIVED
FOR MAPS USE ONLY
NATIONAL REGISTER

SEE INSTRUCTIONS

1. NAME
COMMON: **PERRY STREET HISTORIC DISTRICT**
AND/OR HISTORIC:

2. LOCATION
STREET AND NUMBER:
MONTGOMERY
CITY OR TOWN:
MONTGOMERY
STATE: **ALABAMA** CODE **01** COUNTY: **MONTGOMERY** CODE **101**

3. PHOTO REFERENCE
PHOTO CREDIT: **ALABAMA HISTORICAL COMMISSION**
DATE OF PHOTO: **1971**
NEGATIVE FILED AT: **ALABAMA HISTORICAL COMMISSION**
MONTGOMERY, ALABAMA

4. IDENTIFICATION
DESCRIBE VIEW, DIRECTION, ETC.
front view of Teague House, faces east



Coody House

Perry Street Historic District



UNITED STATES DEPARTMENT OF THE INTERIOR
NATIONAL PARK SERVICE

NATIONAL REGISTER OF HISTORIC PLACES
PROPERTY PHOTOGRAPH FORM

(Type all entries - attach to or enclose with photograph)

STATE

ALABAMA

COUNTY

MONTGOMERY

FOR NAS USE ONLY

ENTRY NUMBER

DATE

71-2, 01, 00-1771 12/16/71

NATIONAL
REGISTER

SEE INSTRUCTIONS

1. NAME

COMMON: PERRY STREET HISTORIC DISTRICT

AND/OR HISTORIC:

2. LOCATION

STREET AND NUMBER:

CITY OR TOWN:

MONTGOMERY

STATE:

ALABAMA

CODE

01

COUNTY:

MONTGOMERY

CODE

101

3. PHOTO REFERENCE

PHOTO CREDIT: ALABAMA HISTORICAL COMMISSION

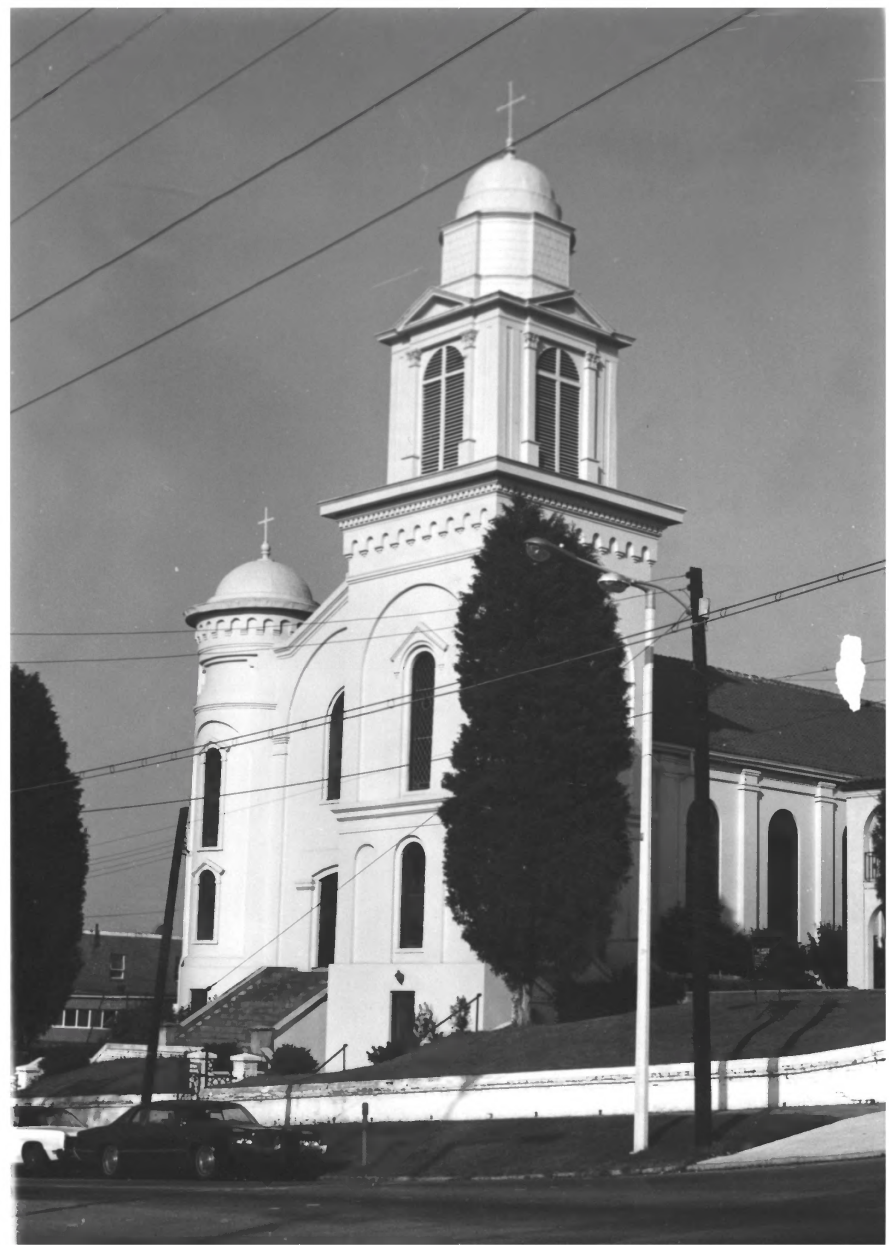
DATE OF PHOTO: 1971

NEGATIVE FILED AT: ALABAMA HISTORICAL COMMISSION
MONTGOMERY, ALABAMA

4. IDENTIFICATION

DESCRIBE VIEW, DIRECTION, ETC.

Front view of Foster-Stevenson House, faces east

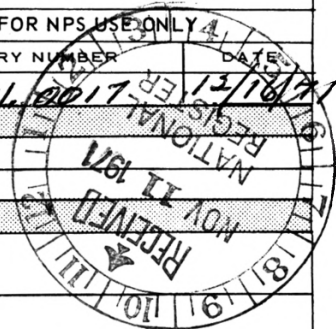


UNITED STATES DEPARTMENT OF THE INTERIOR
NATIONAL PARK SERVICE

NATIONAL REGISTER OF HISTORIC PLACES
PROPERTY PHOTOGRAPH FORM

(Type all entries - attach to or enclose with photograph)

STATE	ALABAMA
COUNTY	MONTGOMERY
FOR NPS USE ONLY	4
ENTRY NUMBER	71.12.01.0017
DATE	12/18/71



1. NAME

COMMON: PERRY STREET HISTORIC DISTRICT
AND/OR HISTORIC:

2. LOCATION

STREET AND NUMBER:

CITY OR TOWN: MONTGOMERY

STATE: ALABAMA	CODE	COUNTY: MONTGOMERY	CODE
	01		101

3. PHOTO REFERENCE

PHOTO CREDIT: ALABAMA HISTORICAL COMMISSION
DATE OF PHOTO: 1971
NEGATIVE FILED AT: ALABAMA HISTORICAL COMMISSION
MONTGOMERY, ALABAMA

4. IDENTIFICATION

DESCRIBE VIEW, DIRECTION, ETC.

front view of St. Peter's Catholic Church, faces west

SEE INSTRUCTIONS



Cody Home

Perry Street Historic District



605

UNITED STATES DEPARTMENT OF THE INTERIOR
NATIONAL PARK SERVICE

NATIONAL REGISTER OF HISTORIC PLACES
PROPERTY PHOTOGRAPH FORM

(Type all entries - attach to or enclose with photograph)

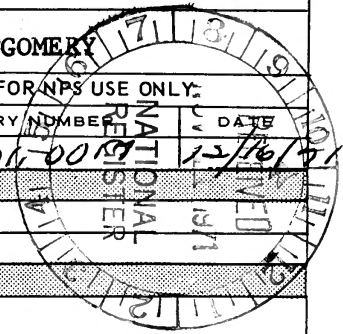
STATE
ALABAMA

COUNTY
MONTGOMERY

FOR NPS USE ONLY:

ENTRY NUMBER DATE

71.12.01-0019 12/16/71



1. NAME

COMMON: **PERRY STREET HISTORIC DISTRICT**
AND/OR HISTORIC:

2. LOCATION

STREET AND NUMBER:

CITY OR TOWN:

MONTGOMERY

STATE:

ALABAMA

CODE

01

COUNTY:

MONTGOMERY

CODE

101

3. PHOTO REFERENCE

PHOTO CREDIT: **ALABAMA HISTORICAL COMMISSION**

DATE OF PHOTO: **1971**

NEGATIVE FILED AT: **ALABAMA HISTORICAL COMMISSION
MONTGOMERY, ALABAMA**

4. IDENTIFICATION

DESCRIBE VIEW, DIRECTION, ETC.

front view of Washburn House faces west

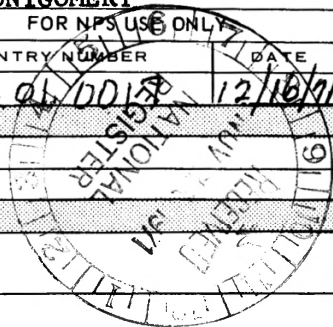
SEE INSTRUCTIONS



NATIONAL REGISTER OF HISTORIC PLACES
PROPERTY PHOTOGRAPH FORM

(Type all entries - attach to or enclose with photograph)

STATE	
ALABAMA	
COUNTY	
MONTGOMERY	
FOR NPS USE ONLY	
ENTRY NUMBER	DATE
11,12,06,0018	12/16/71



SEE INSTRUCTIONS

1. NAME

COMMON: PERRY STREET HISTORIC DISTRICT
AND/OR HISTORIC:

2. LOCATION

STREET AND NUMBER:

CITY OR TOWN: MONTGOMERY

STATE:	CODE	COUNTY:	CODE
ALABAMA	01	MONTGOMERY	101

3. PHOTO REFERENCE

PHOTO CREDIT: ALABAMA HISTORICAL COMMISSION

DATE OF PHOTO: 1971

NEGATIVE FILED AT: ALABAMA HISTORICAL COMMISSION
MONTGOMERY, ALABAMA

4. IDENTIFICATION

DESCRIBE VIEW, DIRECTION, ETC.

front view of Cody House faces east



YWCO
NOT TO BE REPRODUCED

NATIONAL REGISTER OF HISTORIC PLACES
PROPERTY PHOTOGRAPH FORM

(Type all entries - attach to or enclose with photograph)

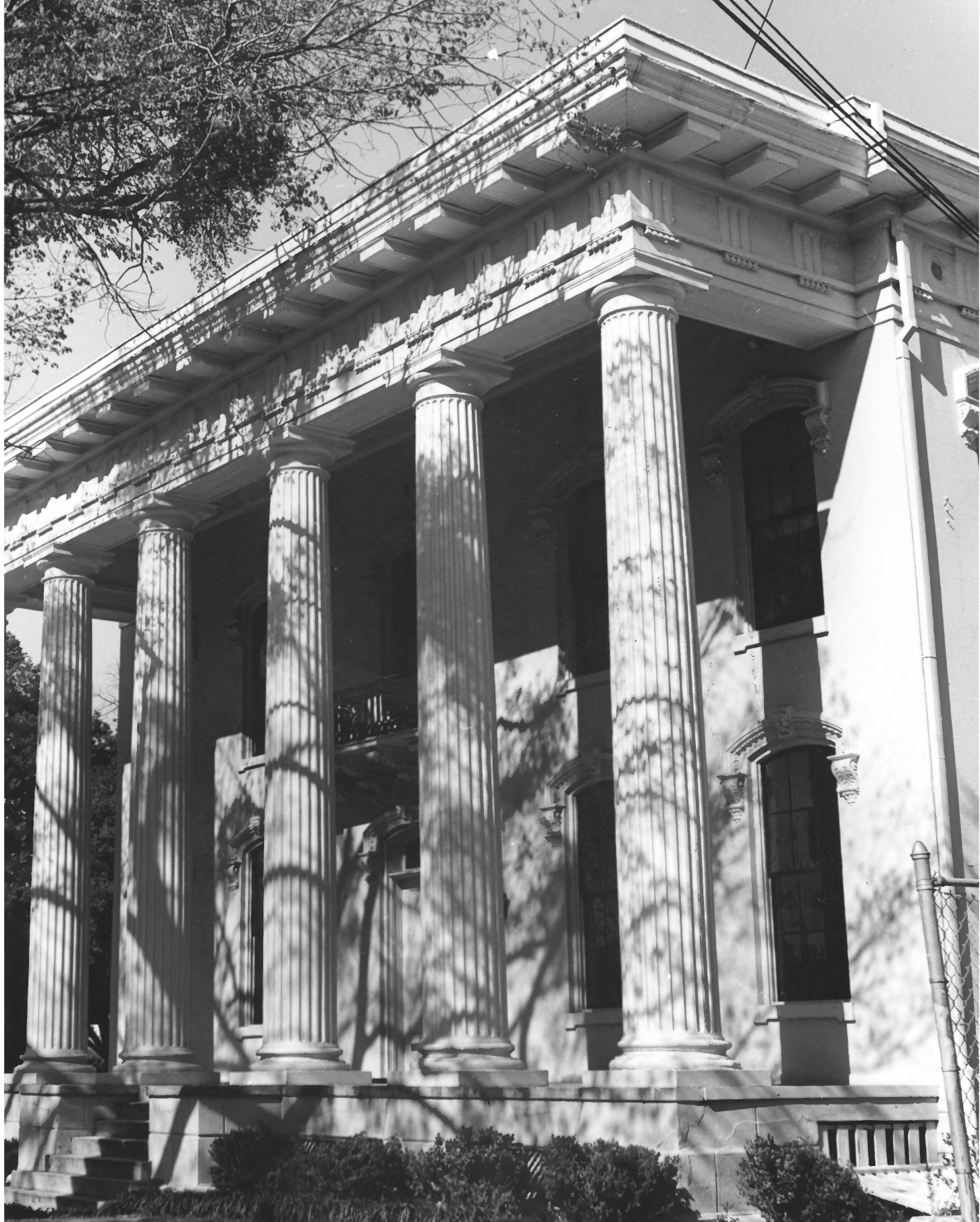
STATE	ALABAMA
COUNTY	MONTGOMERY
FOR NPS USE ONLY	
ENTRY NUMBER	11/12/71 01 01

RECEIVED NOV 11 1971
NATIONAL REGISTER OF HISTORIC PLACES

SEE INSTRUCTIONS

1. NAME			
COMMON: PERRY STREET HISTORIC DISTRICT			
AND/OR HISTORIC:			
2. LOCATION			
STREET AND NUMBER:			
CITY OR TOWN: MONTGOMERY			
STATE: ALABAMA	CODE 01	COUNTY: MONTGOMERY	CODE 101
3. PHOTO REFERENCE			
PHOTO CREDIT: ALABAMA HISTORICAL COMMISSION			
DATE OF PHOTO: 1971			
NEGATIVE FILED AT: ALABAMA HISTORICAL COMMISSION MONTGOMERY, ALABAMA			
4. IDENTIFICATION			
DESCRIBE VIEW, DIRECTION, ETC.			

view of Lawrence Street showing Falconer House in foreground, faces east



Greil Mansion
Apr. '70

UNITED STATES DEPARTMENT OF THE INTERIOR
NATIONAL PARK SERVICE

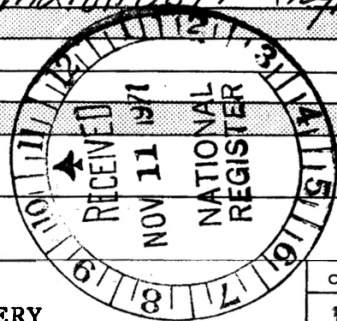
NATIONAL REGISTER OF HISTORIC PLACES
PROPERTY PHOTOGRAPH FORM

(Type all entries - attach to or enclose with photograph)

STATE ALABAMA	
COUNTY MONTGOMERY	
FOR NPS USE ONLY	
ENTRY NUMBER <i>71.12.01.0017</i>	DATE <i>12/16/71</i>

SEE INSTRUCTIONS

1. NAME			
COMMON: PERRY STREET HISTORIC DISTRICT			
AND/OR HISTORIC:			
2. LOCATION			
STREET AND NUMBER:			
CITY OR TOWN: MONTGOMERY			
STATE: ALABAMA	CODE 01	COUNTY: MONTGOMERY	CODE 101
3. PHOTO REFERENCE			
PHOTO CREDIT: ALABAMA HISTORICAL COMMISSION			
DATE OF PHOTO: 1970			
NEGATIVE FILED AT: ALABAMA HISTORICAL COMMISSION MONTGOMERY, ALABAMA			
4. IDENTIFICATION			
DESCRIBE VIEW, DIRECTION, ETC. front view of Greil Mansion, faces west			



PREFERRED LIFE

HOME OFFICE



Please return to
Alabama Historical Commission

UNITED STATES DEPARTMENT OF THE INTERIOR
NATIONAL PARK SERVICE

NATIONAL REGISTER OF HISTORIC PLACES
PROPERTY PHOTOGRAPH FORM

(Type all entries - attach to or enclose with photograph)

STATE	
ALABAMA	
COUNTY	
MONTGOMERY	
FOR NPS USE ONLY	
ENTRY NUMBER	DATE
11.12.01.0017	12/16/71

SEE INSTRUCTIONS

1. NAME			
COMMON: PERRY STREET HISTORIC DISTRICT			
AND/OR HISTORIC:			
2. LOCATION			
STREET AND NUMBER:			
CITY OR TOWN:			
MONTGOMERY			
STATE:		CODE	COUNTY:
ALABAMA		01	MONTGOMERY
3. PHOTO REFERENCE			
PHOTO CREDIT: MIKE LIENBY			
DATE OF PHOTO: September, 1969			
NEGATIVE FILED AT: Mike Lisenby			
1057 Woodley Rd., Montgomery, Alabama			
4. IDENTIFICATION			
DESCRIBE VIEW, DIRECTION, ETC.			
front view of Lomax House, faces west			





UNITED STATES DEPARTMENT OF THE INTERIOR
NATIONAL PARK SERVICE

NATIONAL REGISTER OF HISTORIC PLACES

PROPERTY PHOTOGRAPH FORM

(Type all entries - attach to or enclose with photograph)

STATE ALABAMA	
COUNTY MONTGOMERY	
FOR NPS USE ONLY	
ENTRY NUMBER	DATE

1. NAME

COMMON: Montgomery Public Library/Carnegie Library

AND/OR HISTORIC: Montgomery Public Library/Carnegie Library

2. LOCATION

STREET AND NUMBER:

131 South Perry

CITY OR TOWN:

Montgomery

STATE: CODE COUNTY: CODE

Alabama

01

Montgomery

101

3. PHOTO REFERENCE

PHOTO CREDIT: Ellen Mertins, Alabama Historical Commission

DATE OF PHOTO: March 1974

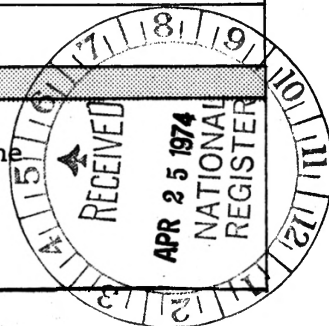
NEGATIVE FILED AT:

Alabama Historical Commission

4. IDENTIFICATION

DESCRIBE VIEW, DIRECTION, ETC.

The building faces West. The photograph is taken across the street looking directly East.



SEE INSTRUCTIONS