



U.S. AIR FORCE  
Recruiting

ARMED FORCES  
RECRUITING CENTER

Special Export

MITCHELL SQUARE-MAIN ST. HISTORIC DISTRICT  
Stevens Point, Portage County, Wisconsin  
Photo by Julie Farnham - Dec. 1985  
Negative at Wis. Historic Society  
View #1 (820-24 Main St.) South and  
east faces of building.

Photo #1 of 37



Shop of Cheese

MITCHELL SQUARE-MAIN ST. HISTORIC DISTRICT  
Stevens Point, Portage County, Wisconsin  
Photo by Julie Farnham - Nov. 1985  
Negative at Wis. Historic Society  
View #51 (1232 Second St.) Front facade  
facing east.

Photo #2 of 87



MITCHELL SQUARE-MAIN ST. HISTORIC DISTRICT  
Stevens Point, Portage County, Wisconsin  
Photo by Julie Farnham - Nov. 1985  
Negative at Wis. Historic Society  
View #48 (1220-28A) Second St.)  
Front facade facing east

Photo #3 of 87



THE SQUARE BAR

MITCHELL SQUARE-MAIN ST. HISTORIC DISTRICT

Stevens Point, Portage County, Wisconsin

Photo by Julie Farnham - Nov. 1985

Negative at Wis. Historic Society

Front facade (facing south) and east side  
of building.

View of #6 (840-44 Main St.)

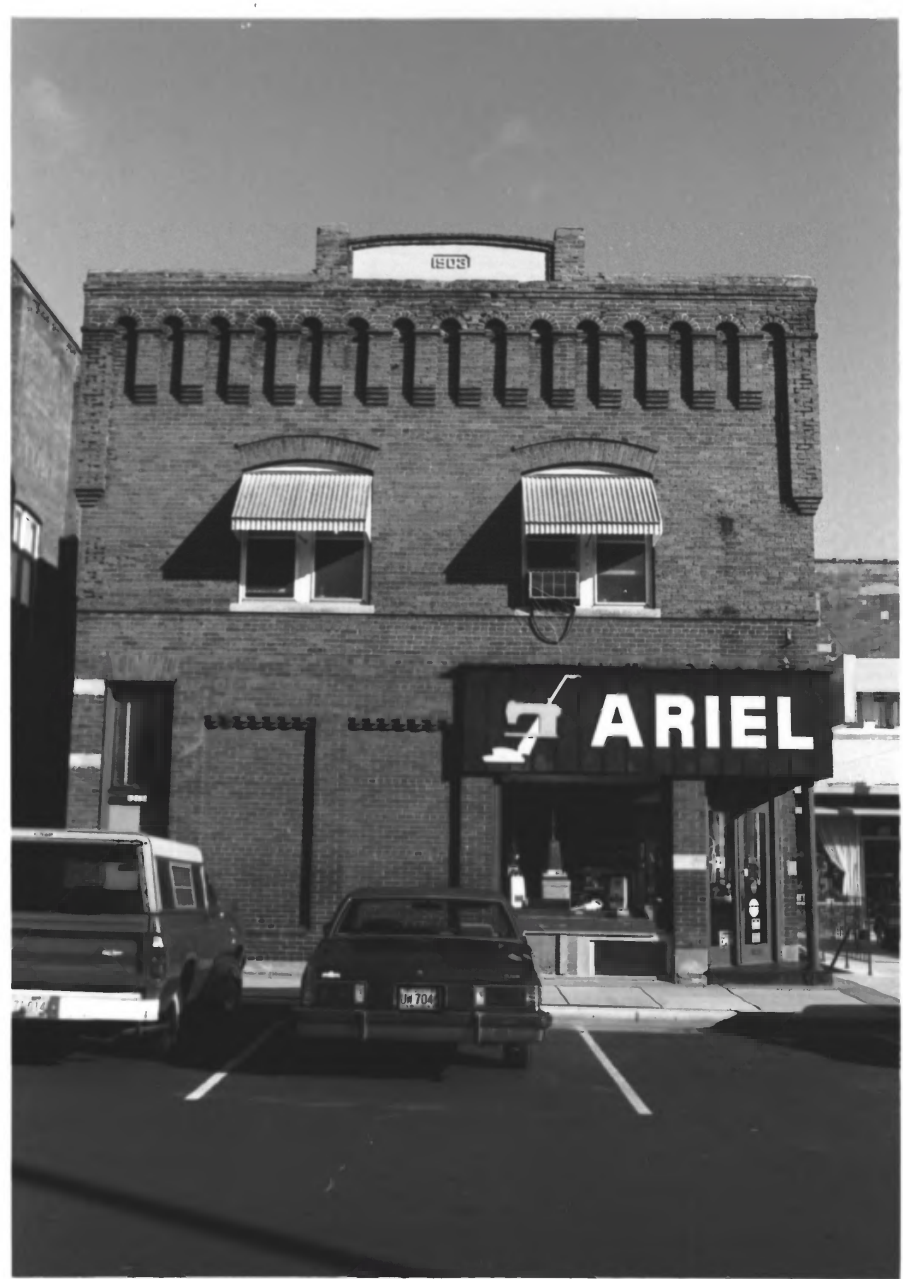
Photo #4 of 87





MITCHELL SQUARE-MAIN ST. HISTORIC DISTRICT  
Stevens Point, Portage County, Wisconsin  
Photo by Julie Farnham - Nov. 1985  
Negative at Wis. Historic Society  
View of #47. (1205-09 Second St.) Front  
facade facing west.

Photo #5 of 87



MITCHELL SQUARE-MAIN ST. HISTORIC DISTRICT  
Stevens Point, Portage County, Wisconsin  
Photo by Julie Farnham - Nov. 1985  
Negative at Wis. Historic Society  
View of #7 (900-04 Main St.) west building  
face.

Photo #6 of 87

J. CZAPLEWSKI

 **ARIEL** NAME BRANDS  
SALES PARTS REPAIRS  
VACUUM CLEANER  
SEWING MACHINE

**Kostka**  
INSURANCE

115 WOODST

Cre  
U

CT

MITCHELL SQUARE-MAIN ST. HISTORIC DISTRICT

Stevens Point, Portage County, Wisconsin

Photo by Julie Farnham - Nov. 1985

Negative at Wis. Historic Society

View of #7 (900-04 Main St.)

South building face

Photo #7 of 87



TWO  
HOUR  
PARKING  
PER APP

CREATIONS UNLIMITED

MITCHELL SQUARE-MAIN ST. HISTORIC DISTRICT

Stevens Point, Portage County, Wisconsin

Photo by Julie Farnham - Nov. 1985

Negative at Wis. Historic Society

View of #49. (1221 Second St.)

Front facade facing west

Photo #8 of 87





MITCHELL SQUARE—MAIN ST. HISTORIC DISTRICT  
Stevens Point, Portage County, Wisconsin  
Photo by Julie Farnham - Nov. 1985  
Negative at Wis. Historic Society  
View of #50 (1225 Second St.)  
Front facade facing west

Photo #9 of 87



MITCHELL SQUARE-MAIN ST. HISTORIC DISTRICT

Stevens Point, Portage County, Wisconsin

Photo by Julie Farnham - Nov. 1985

Negative at Wis. Historic District

View of #9 (916-24 Main St.)

West building face

Photo #10 of 87



MITCHELL SQUARE-MAIN ST. HISTORIC DISTRICT  
Stevens Point, Portage County, Wisconsin  
Photo by Julie Farnham - Nov. 1985  
Negative at Wis. Historic Society  
View of #8 (913-25 Main St.)  
West building face

Photo #11 of 87



**RECORD  
EXCHANGE**



**EASTER  
BARBER  
SHOP**



MITCHELL SQUARE-MAIN ST. HISTORIC DISTRICT  
Stevens Point, Portage County, Wisconsin  
Photo by Julie Farnham - Nov. 1985  
Negative at Wis. Historic Society  
View of #52 (1313-15 Second St.)  
Front facade facing west

Photo #12 of 87





MITCHELL SQUARE-MAIN ST. HISTORIC DISTRICT  
Stevens Point, Portage County, Wisconsin  
Photo by Julie Farnham - Aug. 1985  
Negative at Wis. Historic Society  
View of #53, #54 and #55  
(1317, 1321, 1327 Second St.)  
Front facades facing west

Photo #13 of 87



MITCHELL SQUARE-MAIN ST. HISTORIC DISTRICT  
Stevens Point, Portage County, Wisconsin  
Photo by Julie Farnham - Nov. 1985  
Negative at Wis. Historic Society  
View from north looking south on  
Second St. towards #56 (left)

Photo #14 of 87



MITCHELL SQUARE-MAIN ST. HISTORIC DISTRICT  
Stevens Point, Portage County, Wisconsin  
Photo by Julie Farnham - Nov. 1985  
Negative at Wis. Historic Society  
View of #56 (1331 Second St.)  
Front facade facing west

Photo #15 of 87



MITCHELL SQUARE-MAIN ST. HISTORIC DISTRICT  
Stevens Point, Portage County, Wisconsin  
Photo by Julie Farnham - Nov. 1985  
Negative at Wis. Historic Society  
View of #57 (1343 Second St.)  
Front facade facing west

Photo #16 of 87





WATTERS  
BAR

Lattlin  
AUTO  
PARTS  
CO.



LATTLIN  
AUTO PARTS

MITCHELL SQUARE-MAIN ST. HISTORIC DISTRICT  
Stevens Point, Portage County, Wisconsin  
Photo by Julie Farnham - Nov. 1985  
Negative at Wis. Historic Society  
View from SW looking NE toward #58 and #57  
(1355 and 1343 Second St.)

Photo #17 of 87



MITCHELL SQUARE-MAIN ST. HISTORIC DISTRICT  
Stevens Point, Portage County, Wisconsin  
Photo by Julie Farnham - Nov. 1985  
Negative at Wis. Historic Society  
View from south looking north on Second St.  
into Mitchell Square.

Photo #18 of 87



MITCHELL SQUARE-MAIN ST. HISTORIC DISTRICT  
Stevens Point, Portage County, Wisconsin  
Photo by Julie Farnham - Nov. 1985  
Negative at Wis. Historic Society  
View of #5 (835 Main St.)  
Front facade facing north

Photo #19 of 87



MITCHELL SQUARE-MAIN ST. HISTORIC DISTRICT  
Stevens Point, Portage County, Wisconsin  
Photo by Julie Farnham - Aug. 1985  
Negative at Wis. Historic Society  
View of #4 and #5 (831 and 835 Main St.)  
Front facades facing north

Photo #20 of 87





MITCHELL SQUARE-MAIN ST. HISTORIC DISTRICT  
Stevens Point, Portage County, Wisconsin  
Photo by Julie Farnham - Aug. 1985  
Negative at Wis. Historic Society  
View of #3 (827 Main St.)  
Front facade facing north

Photo #21 of 87



MITCHELL SQUARE-MAIN ST. HISTORIC DISTRICT  
Stevens Point, Portage County, Wisconsin  
Photo by Julie Farnham - Aug. 1985  
Negative at Wis. Historic Society  
View of #2 (823 Main St.)  
East and north facing building facades.  
Farmer's market area in foreground.

Photo #22 of 87



MITCHELL SQUARE-MAIN ST. HISTORIC DISTRICT  
Stevens Point, Portage County, Wisconsin  
Photo by Julie Farnham - Nov. 1985  
Negative at Wis. Historic Society  
View from east looking west on Main St.  
at intersection with Second St. #2 (left)  
and #1 (right) form gateway to Mitchell  
Square.

Photo #23 of 87



MITCHELL SQUARE-MAIN ST. HISTORIC DISTRICT  
Stevens Point, Portage County, Wisconsin  
Photo by Julie Farnham - Nov. 1985  
Negative at Wis. Historic Society  
View from west looking east on Main St. at  
intersection with Second St.

Photo #24 of 87





GWIDT'S

MITCHELL SQUARE-MAIN ST. HISTORIC DISTRICT  
Stevens Point, Portage County, Wisconsin  
Photo by Julie Farnham - Aug. 1985  
Negative at Wis. Historic Society  
View of #8 (913-25 Main St.)  
Front facade facing north and west building  
wall.

Photo #25 of 87



1885

**GWIDT'S**

**DRUGS**  
**GWIDT'S**

**Purolator  
courier**

800-242-4493

Purolator Courier Care  
24 HOURS A DAY  
7 DAYS A WEEK  
FREE DELIVERY  
CALL US TODAY AT 800-242-4493

*Prescriptions*  
FREE DELIVERY

MITCHELL SQUARE-MAIN ST. HISTORIC DISTRICT  
Stevens Point, Portage County, Wisconsin  
Photo by Julie Farnham - Nov. 1985  
Negative at Wis. Historic Society  
View of #8 (913-25 Main St.)  
Front facade facing north

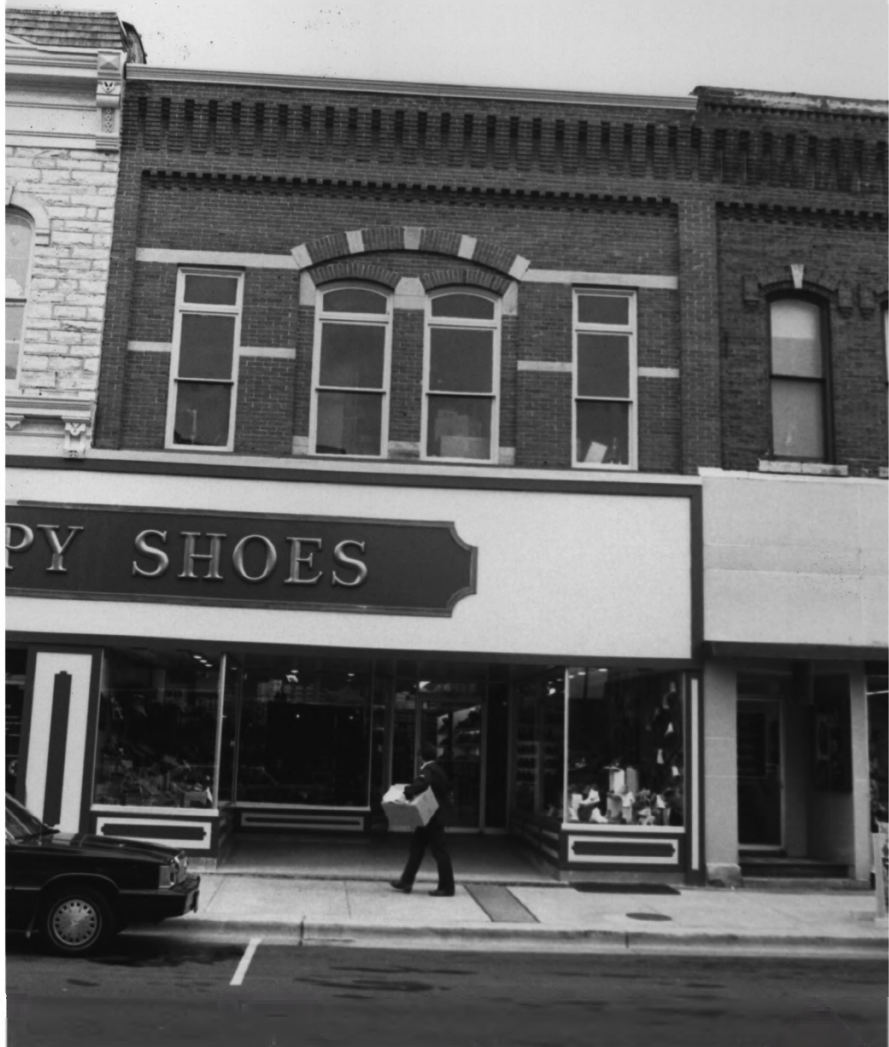
Photo #26 of 87



**Spurdeon's**

MITCHELL SQUARE-MAIN ST. HISTORIC DISTRICT  
Stevens Point, Portage County, Wisconsin  
Photo by Julie Farnham - Nov. 1985  
Negative at Wis. Historic Society  
View of #10 (929 Main St.)  
Front facade facing north

Photo #27 of 87



MITCHELL SQUARE-MAIN ST. HISTORIC DISTRICT  
Stevens Point, Portage County, Wisconsin  
Photo by Julie Farnham - Nov. 1985  
Negative at Wis. Historic Society  
View of #11 (937 Main St.)  
Front facade facing north

Photo #28 of 87





MITCHELL SQUARE-MAIN ST. HISTORIC DISTRICT  
Stevens Point, Portage County, Wisconsin  
Photo by Julie Farnham - Nov. 1985  
Negative at Wis. Historic Society  
View of #13 (949 Main St.)  
Front facade facing north and east facing  
wall.

Photo #29 of 87



MITCHELL SQUARE-MAIN ST. HISTORIC DISTRICT  
Stevens Point, Portage County, Wisconsin  
Photo by Julie Farnham - Nov. 1985  
Negative at Wis. Historic Society  
View of #9 (916-24 Main St.)  
Front facade facing south.

Photo #30 of 87



MITCHELL SQUARE-MAIN ST. HISTORIC DISTRICT  
Stevens Point, Portage County, Wisconsin  
Photo by Julie Farnham - Nov. 1985  
Negative at Wis. Historic Society  
View of #12 (944 Main St.)  
Front facade facing south

Photo #31 of 87



MITCHELL SQUARE-MAIN ST. HISTORIC DISTRICT  
Stevens Point, Portage County, Wisconsin  
Photo by Julie Farnham - Nov. 1985  
Negative at Wis. Historic Society  
View of #14 (956 Main St.)  
Front facade facing south

Photo #32 of 87





MITCHELL SQUARE-MAIN ST. HISTORIC DISTRICT  
Stevens Point, Portage County, Wisconsin  
Photo by Julie Farnham - Dec. 1985  
Negative at Wis. Historic Society  
View of #15 (960-64 Main St.)  
Front facade facing south

Photo #33 of 87



GRUBBA  
JEWELERS

MITCHELL SQUARE-MAIN ST. HISTORIC DISTRICT  
Stevens Point, Portage County, Wisconsin  
Photo by Julie Farnham - Nov. 1985  
Negative at Wis. Historic Society  
View of #16 (968 Main St.)  
Front facade facing south

Photo #34 of 87



MITCHELL SQUARE-MAIN ST. HISTORIC DISTRICT  
Stevens Point, Portage County, Wisconsin  
Photo by Julie Farnham - Nov. 1985  
Negative at Wis. Historic Society  
View from north looking south on Third St.

Photo #35 of 87



MITCHELL SQUARE-MAIN ST. HISTORIC DISTRICT  
Stevens Point, Portage County, Wisconsin  
Photo by Julie Farnham - Nov. 1985  
Negative at Wis. Historic Society  
View of #68 (1314 Third St.)  
Front facade facing east

Photo #36 of 87





MITCHELL SQUARE-MAIN ST. HISTORIC DISTRICT  
Stevens Point, Portage County, Wisconsin  
Photo by Julie Farnham - Dec. 1985  
Negative at Wis. Historic Society  
View of #70 (1325 Third St.)  
Front facade facing west

Photo #37 of 87



MITCHELL SQUARE-MAIN ST. HISTORIC DISTRICT  
Stevens Point, Portage County, Wisconsin  
Photo by Julie Farnham - Dec. 1985  
Negative at Wis. Historic Society  
View of #69 (1319 Third St.)  
Front facade facing west

Photo #38 of 87



MITCHELL SQUARE-MAIN ST. HISTORIC DISTRICT  
Stevens Point, Portage County, Wisconsin  
Photo by Julie Farnham - Dec. 1985  
Negative at Wis. Historic Society  
View of #67 (1313 Third St.)  
Front facade facing west

Photo #39 of 87



MITCHELL SQUARE-MAIN ST. HISTORIC DISTRICT  
Stevens Point, Portage County, Wisconsin  
Photo by Julie Farnham - Dec. 1985  
Negative at Wis. Historic Society  
View of #66 (1309 Third St.)  
Front facade facing west.

Photo #40 of 87





MITCHELL SQUARE-MAIN ST. HISTORIC DISTRICT  
Stevens Point, Portage County, Wisconsin  
Photo by Julie Farnham - Nov. 1985  
Negative at Wis. Historic Society  
View from intersection of Main St. and  
Third St. looking west toward Mitchell  
Square.

Photo #41 of 87



HOM  
FURNITURE CO.

WOMEN'S  
JEWELERS

WOMEN'S  
JEWELERS  
CASH ON DELIVERY

WOMEN'S  
JEWELERS

WOMEN'S  
JEWELERS

WOMEN'S  
JEWELERS

WOMEN'S  
JEWELERS

WOMEN'S  
JEWELERS

WOMEN'S  
JEWELERS

WOMEN'S  
JEWELERS

WOMEN'S  
JEWELERS

WOMEN'S  
JEWELERS

WOMEN'S  
JEWELERS

WOMEN'S  
JEWELERS

MITCHELL SQUARE-MAIN ST. HISTORIC DISTRICT  
Stevens Point, Portage County, Wisconsin  
Photo by Julie Farnham - Nov. 1985  
Negative at Wis. Historic Society  
View from intersection of Main St. and  
Third St. looking east on Main St.

Photo #42 of 87



MITCHELL SQUARE-MAIN ST. HISTORIC DISTRICT  
Stevens Point, Portage County, Wisconsin  
Photo by Julie Farnham - Nov. 1985  
Negative at Wis. Historic Society  
View of #18 (1003 Main St.)  
Front facade facing north

Photo #43 of 87



ONE  
WAY  
→

MITCHELL SQUARE-MAIN ST. HISTORIC DISTRICT  
Stevens Point, Portage County, Wisconsin  
Photo by Julie Farnham - Nov. 1985  
Negative at Wis. Historic Society  
View of #20 (1015 Main St.)  
Front facade facing north

Photo #44 of 87





MITCHELL SQUARE-MAIN ST. HISTORIC DISTRICT  
Stevens Point, Portage County, Wisconsin  
Photo by Julie Farnham - Nov. 1985  
Negative at Wis. Historic Society  
View looking north on Third Ct. (former  
Third St.) from Main St. Foreground (left  
#16 (960 Main St.) and right #17 (1000  
Main St.) Background: New CenterPoint Mall

Photo #45 of 87



Parkinson's

HOME  
FURNITURE CO.

NO  
OUTLET

MITCHELL SQUARE-MAIN ST. HISTORIC DISTRICT  
Stevens Point, Portage County, Wisconsin  
Photo by Julie Farnham - Dec. 1985  
Negative at Wis. Historic Society  
View of #17 (1000 Main St.)  
West and south facing building facades

Photo #46 of 87



Parkinson's

Christmas

NO  
OUTLET

MITCHELL SQUARE-MAIN ST. HISTORIC DISTRICT  
Stevens Point, Portage County, Wisconsin  
Photo by Julie Farnham - Dec. 1985  
Negative at Wis. Historic Society  
View of #17 (1000 Main St.)  
Front facade facing south

Photo #47 of 87



S

414

THE FRESH MARKET

THE FRESH MARKET  
HOLIDAY GIFT  
KOREAN

MITCHELL SQUARE-MAIN ST. HISTORIC DISTRICT  
Stevens Point, Portage County, Wisconsin  
Photo by Julie Farnham - Dec. 1985  
Negative at Wis. Historic Society  
View of #19 (1000 Main St.)  
Front facade facing south

Photo #48 of 87





MITCHELL SQUARE-MAIN ST. HISTORIC DISTRICT  
Stevens Point, Portage County, Wisconsin  
Photo by Julie Farnham - Dec. 1985  
Negative at Wis. Historic Society  
View of #22 (1024 Main St.)  
Front facade facing south

Photo #49 of 87



MITCHELL SQUARE-MAIN ST. HISTORIC DISTRICT  
Stevens Point, Portage County, Wisconsin  
Photo by Julie Farnham - Nov. 1985  
Negative at Wis. Historic Society  
View of #21 (1019 Main St.)  
Front facade facing north

Photo #50 of 87

*Brills*

GIFTS & LUGGAGE

20% OFF  
LEATHER  
WALLETS

HART  
IN-STOCK  
SALES

Brills

20% OFF  
BASKETS



MITCHELL SQUARE-MAIN ST. HISTORIC DISTRICT

Stevens Point, Portage County, Wisconsin

Photo by Julie Farnham - Nov. 1985

Negative at Wis. Historic Society

View of #24 (1031 Main St.)

Front facade facing north



ME  
S

CITIZENS NATIONAL BANK

Brills

MITCHELL SQUARE-MAIN ST. HISTORIC DISTRICT

Stevens Point, Portage County, Wisconsin

Photo by Julie Farnham - Nov. 1985

Negative at Wis. Historic Society

View looking south from Main St. into  
drive thru alley. with #24 (right) and  
#25 (left)

Photo #52 of 87



**TRADEHOME  
SHOES**



MITCHELL SQUARE-MAIN ST. HISTORIC DISTRICT  
Stevens Point, Portage County, Wisconsin  
Photo by Julie Farnham - Nov. 1985  
Negative at Wis. Historic Society  
View of #25 (1035 Main St.)  
Front facade facing north

Photo #53 of 87



TRA  
S

MITCHELL SQUARE-MAIN ST. HISTORIC DISTRICT  
Stevens Point, Portage County, Wisconsin  
Photo by Julie Farnham - Nov. 1985  
Negative at Wis. Historic Society  
View of #28 (1043 Main St.)  
Front facade facing north

Photo #54 of 87



**BEN'S**  
**JEWELERS**  
DIAMONDS - WATCHES  
CELEBRATING  
25 YEARS

**HARDLY**  
**EVER**

**CUST**

MITCHELL SQUARE-MAIN ST. HISTORIC DISTRICT  
Stevens Point, Portage County, Wisconsin  
Photo by Julie Farnham - Nov. 1985  
Negative at Wis. Historic Society  
View of #23, #26 (1028 and 1036 Main St.)  
Front facades facing south

Photo #55 of 87



**IDEAL**  
CUSTOM FRAMES & GIFTS

DAILY  
MEAT

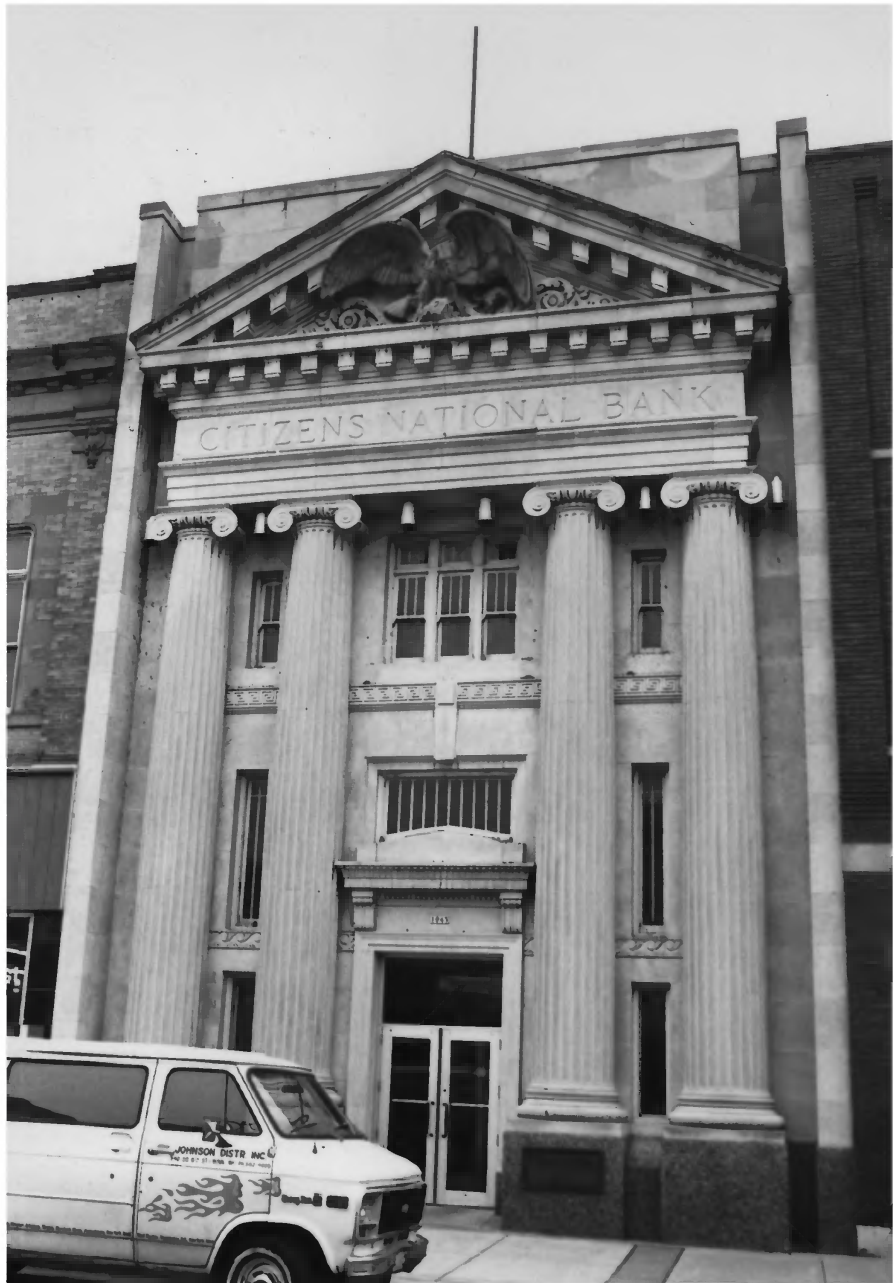
HARDWARE

Hardwood  
Cabinets

MITCHELL SQUARE-MAIN ST. HISTORIC DISTRICT  
Stevens Point, Portage County, Wisconsin  
Photo by Julie Farnham - Dec. 1985  
Negative at Wis. Historic Society  
View of #27 (1040 Main St.)  
Front facade facing south

Photo #56 of 87





CITIZENS NATIONAL BANK

1111

JOHNSON DISTR INC  
PHO 312 87 31 - 3100 W. 90. 5400 CHICAGO

MITCHELL SQUARE-MAIN ST. HISTORIC DISTRICT  
Stevens Point, Portage County, Wisconsin  
Photo by Julie Farnham - Nov. 1985  
Negative at Wis. Historic Society  
View of #30 (1045 Main St.)  
Front facade facing north

Photo #57 of 87



TOTAL  
HARDWARE

**Coast to Coast**

Coast to Coast

Coast Coast

Coast

Coast

Coast

Coast

Coast

Coast

Coast

Coast

Coast

Coast

Coast

Coast

Coast

Coast

Coast

Coast

Coast

The Downfiller  
Package Drop

OPEN TIL 8PM

OPEN TIL 8PM

SUN 12 TO 4

MITCHELL SQUARE-MAIN ST. HISTORIC DISTRICT  
Stevens Point, Portage County, Wisconsin  
Photo by Julie Farnham - Nov. 1985  
Negative at Wis. Historic Society  
View of #32 (1055 Main St.)  
Front facade facing north

Photo #58 of 87



MITCHELL SQUARE-MAIN ST. HISTORIC DISTRICT  
Stevens Point, Portage County, Wisconsin  
Photo by Julie Farnham - Nov. 1985  
Negative at Wis. Historic Society  
View of #33 (1059 Main St.)  
Front facade facing north

Photo #59 of 87



DEAL  
FRAMES & GIFTS

LUNCH  
CASH & CARRY  
SHOP

1052 MAIN

DOW  
ROBI

MITCHELL SQUARE-MAIN ST. HISTORIC DISTRICT  
Stevens Point, Portage County, Wisconsin  
Photo by Julie Farnham - Dec. 1985  
Negative at Wis. Historic Society  
View of #29 (1044 Main St.)  
Front facade facing north

Photo #60 of 87



1052 MAIN

DOWNTOWN PLAZA  
KODAK ENTERPRISE



MITCHELL SQUARE-MAIN ST. HISTORIC DISTRICT  
Stevens Point, Portage County, Wisconsin  
Photo by Julie Farnham - Aug. 1985  
Negative at Wis. Historic Society=  
View of #31 (1052 Main St.)  
Front facade facing south

Photo #61 of 87



MITCHELL SQUARE-MAIN ST. HISTORIC DISTRICT  
Stevens Point, Portage County, Wisconsin  
Photo by Julie Farnham - Aug. 1985  
View of #34 (1100 Main St.)  
Front facade facing south

Photo #62 of 87



MITCHELL SQUARE-MAIN ST. HISTORIC DISTRICT  
Stevens Point, Portage County, Wisconsin  
Photo by Julie Farnham - Aug. 1985  
Negative at Wis. Historic Society  
View of #35 (1101 Main St.)  
Front facade facing north

Photo #63 of 87



MITCHELL SQUARE-MAIN ST. HISTORIC DISTRICT  
Stevens Point, Portage County, Wisconsin  
Photo by Julie Farnham - Dec. 1985  
Negative at Wis. Historic Society  
View of #36 (1105-13 Main St.)  
Front facade facing north

Photo #64 of 87





The **TEA SHOP** GIFTS CARDS JEWELRY LEATHER

*The Tea Shop*

OTTERL

5015 ART

MITCHELL SQUARE-MAIN ST. HISTORIC DISTRICT  
Stevens Point, Portage County, Wisconsin  
Photo by Julie Farnham - Dec. 1985  
Negative at Wis. Historic Society  
View of #37 (1108 Main St.)  
Front facade facing south

Photo #65 of 87



FOX THEATRE

FOX THEATRE

FOX

TEMPORARILY  
CLOSED  
WATCH FOR  
REOPENING

JEWELRY

Chapman's

THE OPEN

MITCHELL SQUARE-MAIN ST. HISTORIC DISTRICT  
Stevens Point, Portage County, Wisconsin  
Photo by Julie Farnham - Dec. 1985  
Negative at Wis. Historic Society  
Front facade facing south  
View of #39 (1124 Main St.)

Photo #66 of 87



the  
closet

OPEN

D

MITCHELL SQUARE-MAIN ST. HISTORIC DISTRICT  
Stevens Point, Portage County, Wisconsin  
Photo by Julie Farnham - Nov. 1985  
Negative at Wis. Historic Society.  
View of #38 (1121 Main St.)  
Front facade facing north

Photo #67 of 87



MITCHELL SQUARE-MAIN ST. HISTORIC DISTRICT  
Stevens Point, Portage County, Wisconsin  
Photo by Julie Farnham - Nov. 1985  
Negative at Wis. Historic Society  
Front facade facing north  
View of #40 (1125-29 Main St.)

Photo #68 of 87



HAASE'S  
JEWELER

& RE'S LTD.



MITCHELL SQUARE-MAIN ST. HISTORIC DISTRICT  
Stevens Point, Portage County, Wisconsin  
Photo by Julie Farnham - Nov. 1985  
Negative at Wis. Historic Society  
View of #42 (1137 Main St.)  
Front facade facing north

Photo #69 of 87



MITCHELL SQUARE-MAIN ST. HISTORIC DISTRICT  
Stevens Point, Portage County, Wisconsin  
Photo by Julie Farnham - Dec. 1985  
Negative at Wis. Historic Society  
View of #44 (1141-57 Main St.)  
Front facade facing north and partial view  
of east side of building

Photo #70 of 87



**BOOK WORLD**

MITCHELL SQUARE-MAIN ST. HISTORIC DISTRICT  
Stevens Point, Portage County, Wisconsin  
Photo by Julie Farnham - Nov. 1985  
Negative at Wis. Historic Society  
View of #41 (1136 Main St.)  
Front facade facing south

Photo #71 of 87



MITCHELL SQUARE-MAIN ST. HISTORIC DISTRICT  
Stevens Point, Portage County, Wisconsin  
Photo by Julie Farnham - Nov. 1985  
Negative at Wis. Historic Society  
View of #43 (1140 Main St.)  
Front facade facing south

Photo #72 of 87





Shop

LAYAWAY  
NOW FOR  
CHRISTMAS

Coke

MITCHELL SQUARE-MAIN ST. HISTORIC DISTRICT  
Stevens Point, Portage County, Wisconsin  
Photo by Julie Farnham - Nov. 1985  
Negative at Wis. Historic Society  
View of #45 (1148 Main St.)  
Front facade facing south

Photo #73 of 87



MITCHELL SQUARE-MAIN ST. HISTORIC DISTRICT  
Stevens Point, Portage County, Wisconsin  
Photo by Julie Farnham - Nov. 1985  
Negative at Wis. Historic Society  
View looking west on Main St. at  
intersection with Strong's Ave.

Photo #74 of 87



MITCHELL SQUARE-MAIN ST. HISTORIC DISTRICT  
Stevens Point, Portage County, Wisconsin  
Photo by Julie Farnham - Nov. 1985  
Negative at Wis. Historic Society  
View looking east on Main St. at  
Intersection with Strongs Ave.

Photo #75 of 87

SPEED  
LIMIT  
15

FIRST  
NATIONAL B  
of Stevens P



MITCHELL SQUARE-MAIN ST. HISTORIC DISTRICT  
Stevens Point, Portage County, Wisconsin  
Photo by Julie Farnham - Nov. 1985  
Negative at Wis. Historic Society  
View looking west on Main St. at  
intersection with Church St. (out of  
district boundary)

Photo #76 of 87





MITCHELL SQUARE-MAIN ST. HISTORIC DISTRICT  
Stevens Point, Portage County, Wisconsin  
Photo by Julie Farnham - Nov. 1985  
Negative at Wis. Historic Society  
View looking south on Strongs Ave. at  
intersection with Main St.

Photo #77 of 87



MITCHELL SQUARE-MAIN ST. HISTORIC DISTRICT  
Stevens Point, Portage County, Wisconsin  
Photo by Julie Farnham - Dec. 1985  
Negative at Wis. Historic Society  
View of #46 (1201-17 Main St.)  
Front facade facing north  
Foreground: parking lot for new  
CenterPoint Mall

Photo #78 of 87



GRAHAM  
LINE  
MUSIC

VIP

Map  
WALKER SPICE RESTAURANT

WALKER SPICE RESTAURANT

WALKER SPICE RESTAURANT

MITCHELL SQUARE-MAIN ST. HISTORIC DISTRICT  
Stevens Point, Portage County, Wisconsin  
Photo by Julie Farnham - Nov. 1985  
Negative at Wis. Historic Society  
View of #46 (1201-17 Main St.)  
West building facade fronting on  
Strong's Ave.

Photo #79 of 87



MITCHELL SQUARE-MAIN ST. HISTORIC DISTRICT  
Stevens Point, Portage County, Wisconsin  
Photo by Julie Farnham - Nov. 1985  
Negative at Wis. Historic Society  
View of #59 (1319 Strongs Ave.)  
Front facade facing west

Photo #80 of 87





LOFT OR  
LEASE

Sale  
Sale  
Sale

MITCHELL SQUARE-MAIN ST. HISTORIC DISTRICT  
Stevens Point, Portage County, Wisconsin  
Photo by Julie Farnham - Nov. 1985  
Negative at Wis. Historic Society  
View of #61 (1323 Strong's Ave.)  
Front façade facing west

Photo #81 of 87

ANTIQUARIAN  
SHOP

NO  
STOPPING  
OR  
STANDING



MITCHELL SQUARE-MAIN ST. HISTORIC DISTRICT  
Stevens Point, Portage County, Wisconsin  
Photo by Julie Farnham - Dec. 1985  
Negative at Wis. Historic Society  
View of #63 (1327-31 Strongs Ave.)  
Front facade facing west

Photo #82 of 87



MITCHELL SQUARE-MAIN ST. HISTORIC DISTRICT  
Stevens Point, Portage County, Wisconsin  
Photo by Julie Farnham - Nov. 1985  
Negative at Wis. Historic Society  
View of #44 (1141-57 Main St.)  
East facing building facade fronting  
on Strongs Ave.

Photo #83 of 87



MITCHELL SQUARE-MAIN ST. HISTORIC DISTRICT  
Stevens Point, Portage County, Wisconsin  
Photo by Julie Farnham - Nov. 1985  
Negative at Wis. Historic Society  
View of #60 (1320-22 Strongs Ave.)  
Front facade facing east

Photo #84 of 87





MITCHELL SQUARE-MAIN ST. HISTORIC DISTRICT  
Stevens Point, Portage County, Wisconsin  
Photo by Julie Farnham - Nov. 1985  
Negative at Wis. Historic Society  
View of #62 (1326 Strongs Ave.)  
Front facade facing east

Photo #85 of 87



MITCHELL SQUARE-MAIN ST. HISTORIC DISTRICT  
Stevens Point, Portage County, Wisconsin  
Photo by Julie Farnham - Nov. 1985  
Negative at Wis. Historic Society  
View of #64 (1332 Strongs Ave.)  
Front facade facing east

Photo #86 of 87



**Sampler House**

MITCHELL SQUARE-MAIN ST. HISTORIC DISTRICT  
Stevens Point, Portage County, Wisconsin  
Photo by Julie Farnham - Nov. 1985  
Negative at Wis. Historic Society  
View of #65 (1336 Strong's Ave.)  
Front facade facing east

Photo #87 of 87