



Jacket 533-183 Illus No. 176a

Width 39½ picas Depth 26½ picas Focus 70 %

Sq. Ht. Line Comb. Slide Broad

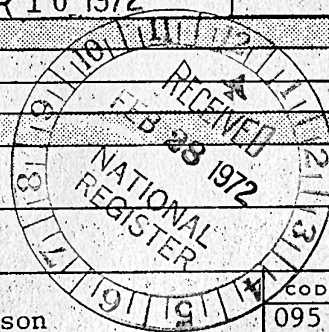
UNITED STATES DEPARTMENT OF THE INTERIOR
NATIONAL PARK SERVICE
NATIONAL REGISTER OF HISTORIC PLACES
PROPERTY PHOTOGRAPH FORM

(Type all entries - attach to or enclose with photograph)

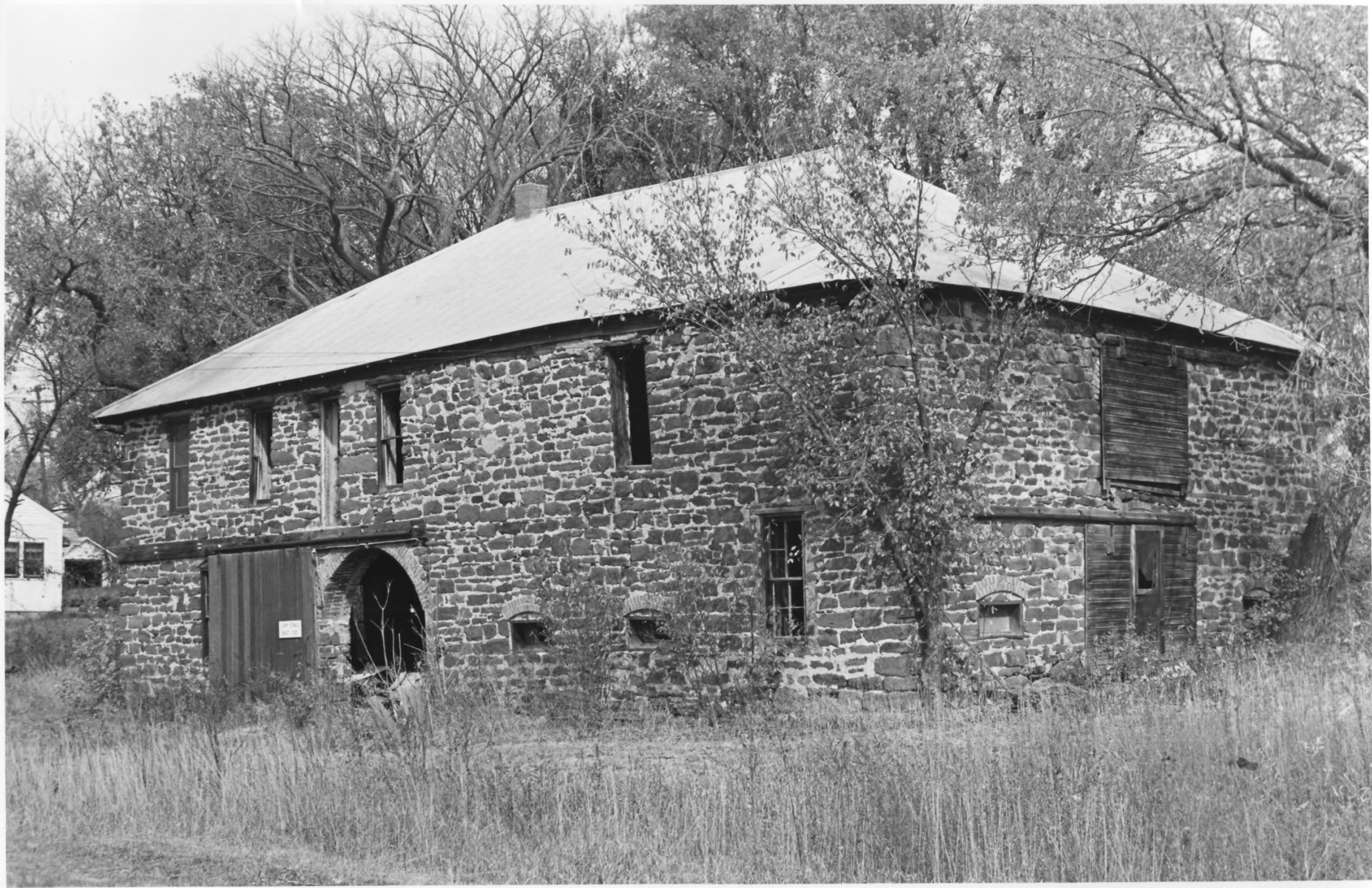
STATE Nebraska	
COUNTY Jefferson	
FOR NPS USE ONLY	
ENTRY NUMBER MAR 16 1972	DATE

SEE INSTRUCTIONS

1. NAME			
COMMON:		Steele City Historic District	
AND/OR HISTORIC:			
2. LOCATION			
STREET AND NUMBER: (See continuation sheet)			
CITY OR TOWN: Steele City			
STATE: Nebraska	CODE 31	COUNTY: Jefferson	CODE 095
3. PHOTO REFERENCE			
PHOTO CREDIT:		Nebraska State Historical Society	
DATE OF PHOTO:		1971	
NEGATIVE FILED AT:		Nebraska State Historical Society 1500 "R" Street, Lincoln, Nebraska	
4. IDENTIFICATION			
DESCRIBE VIEW, DIRECTION, ETC. Site No. 1: Livery Stable, view of the east (front) and north (side) elevations. View towards the southeast.			



8-16-72



UNITED STATES DEPARTMENT OF THE INTERIOR
NATIONAL PARK SERVICE

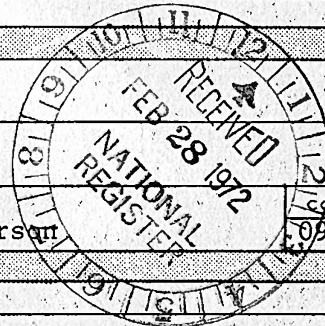
NATIONAL REGISTER OF HISTORIC PLACES
PROPERTY PHOTOGRAPH FORM

(Type all entries - attach to or enclose with photograph)

STATE Nebraska	
COUNTY Jefferson	
FOR NPS USE ONLY	
ENTRY NUMBER	DATE
	MAR 16 1972

SEE INSTRUCTIONS

1. NAME			
COMMON:	Steele City Historic District		
AND/OR HISTORIC:			
2. LOCATION			
STREET AND NUMBER:	(See continuation sheet)		
CITY OR TOWN:	Steele City		
STATE:	CODE	COUNTY:	CODE
Nebraska	31	Jefferson	095
3. PHOTO REFERENCE			
PHOTO CREDIT:	Nebraska State Historical Society		
DATE OF PHOTO:	1971		
NEGATIVE FILED AT:	Nebraska State Historical Society 1500 "R" Street, Lincoln, Nebraska		
4. IDENTIFICATION			
DESCRIBE VIEW, DIRECTION, ETC.			
Site No. 1: Livery Stable, view of the east (front) and south (side) elevation. View towards the northeast.			



PROPERTY OF THE NATIONAL REGISTER



UNITED STATES DEPARTMENT OF THE INTERIOR
NATIONAL PARK SERVICE

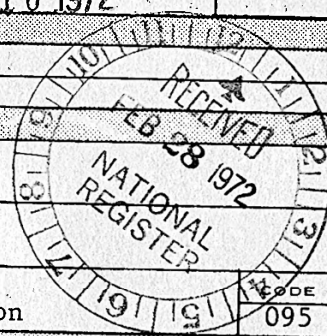
NATIONAL REGISTER OF HISTORIC PLACES
PROPERTY PHOTOGRAPH FORM

(Type all entries - attach to or enclose with photograph)

STATE Nebraska	
COUNTY Jefferson	
FOR NPS USE ONLY	
ENTRY NUMBER MAR 16 1972	DATE

SEE INSTRUCTIONS

1. NAME			
COMMON:	Steele City Historic District		
AND/OR HISTORIC:			
2. LOCATION			
STREET AND NUMBER: (See continuation sheet)			
CITY OR TOWN: Steele City			
STATE:	Nebraska	CODE 31	COUNTY: Jefferson
3. PHOTO REFERENCE			
PHOTO CREDIT:	Nebraska State Historical Society		
DATE OF PHOTO:	1971		
NEGATIVE FILED AT:	Nebraska State Historical Society 1500 "R" Street, Lincoln, Nebraska		
4. IDENTIFICATION			
DESCRIBE VIEW, DIRECTION, ETC: Site No. 2: Blacksmith Shop, view of the south (front) and west (side) elevation. View towards the northeast.			



PROPERTY OF THE NATIONAL REGISTER



UNITED STATES DEPARTMENT OF THE INTERIOR
NATIONAL PARK SERVICE

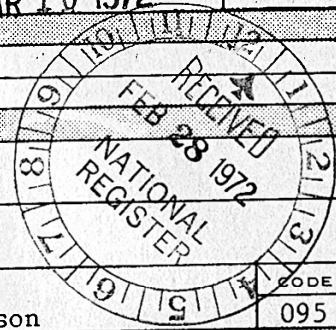
NATIONAL REGISTER OF HISTORIC PLACES
PROPERTY PHOTOGRAPH FORM

(Type all entries - attach to or enclose with photograph)

STATE Nebraska	
COUNTY Jefferson	
FOR NPS USE ONLY	
ENTRY NUMBER	DATE
	MAR 16 1972

SEE INSTRUCTIONS

1. NAME			
COMMON:		Steele City Historic District	
AND/OR HISTORIC:			
2. LOCATION			
STREET AND NUMBER:			
(See continuation sheet)			
CITY OR TOWN:			
Steele City			
STATE:	CODE	COUNTY:	CODE
Nebraska	31	Jefferson	095
3. PHOTO REFERENCE			
PHOTO CREDIT:		Nebraska State Historical Society	
DATE OF PHOTO:		1971	
NEGATIVE FILED AT:		Nebraska State Historical Society 1500 "R" Street, Lincoln, Nebraska	
4. IDENTIFICATION			
DESCRIBE VIEW, DIRECTION, ETC.			
Site No. 2: Blacksmith Shop, view of the south (front) and east (side) elevations. Photo taken before new shingle roof was added. View towards the northwest.			



PROPERTY OF THE NATIONAL REGISTER



UNITED STATES DEPARTMENT OF THE INTERIOR
NATIONAL PARK SERVICE

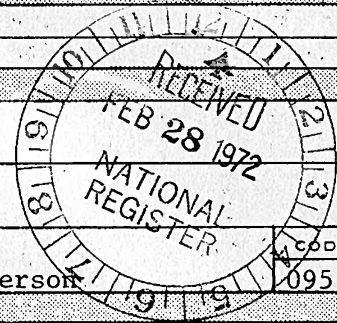
NATIONAL REGISTER OF HISTORIC PLACES
PROPERTY PHOTOGRAPH FORM

(Type all entries - attach to or enclose with photograph)

STATE Nebraska	
COUNTY Jefferson	
FOR NPS USE ONLY	
ENTRY NUMBER MAR 16 1972	DATE

SEE INSTRUCTIONS

1. NAME			
COMMON:		Steele City Historic District	
AND/OR HISTORIC:			
2. LOCATION			
STREET AND NUMBER: (See continuation sheet)			
CITY OR TOWN: Steele City			
STATE: Nebraska	CODE: 31	COUNTY: Jefferson	CODE: 095
3. PHOTO REFERENCE			
PHOTO CREDIT:		Nebraska State Historical Society	
DATE OF PHOTO:		1971	
NEGATIVE FILED AT:		Nebraska State Historical Society 1500 "R" Street, Lincoln, Nebraska	
4. IDENTIFICATION			
DESCRIBE VIEW, DIRECTION, ETC. Site No. 2: Blacksmith Shop; view of the north (rear) and partial east (side) elevations. View towards the south-west.			



PROPERTY OF THE NATIONAL REGISTER



UNITED STATES DEPARTMENT OF THE INTERIOR
NATIONAL PARK SERVICE

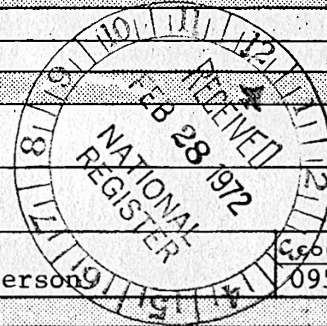
**NATIONAL REGISTER OF HISTORIC PLACES
PROPERTY PHOTOGRAPH FORM**

(Type all entries - attach to or enclose with photograph)

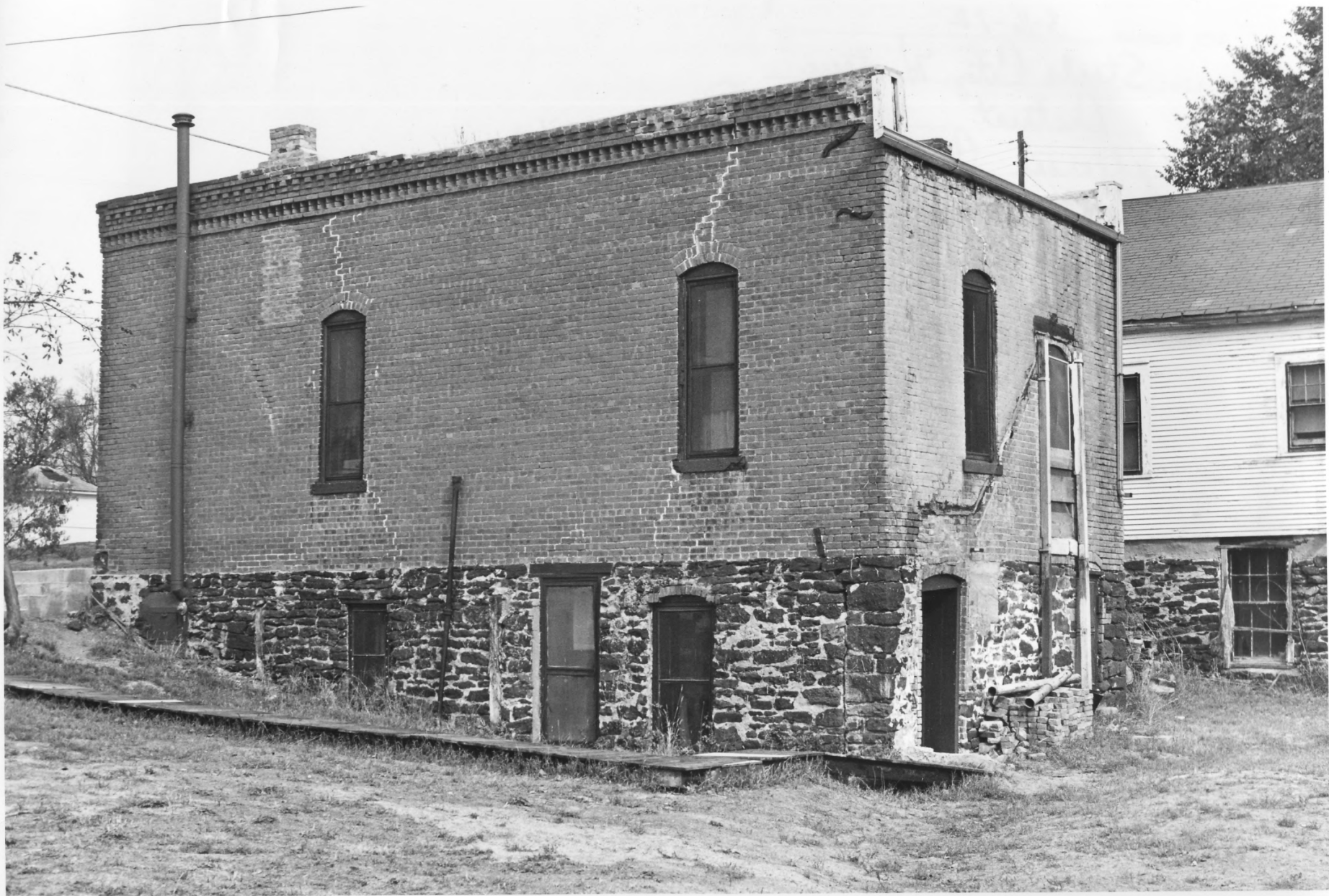
STATE Nebraska	
COUNTY Jefferson	
FOR NPS USE ONLY	
ENTRY NUMBER MAR 16 1972	DATE

SEE INSTRUCTIONS

1. NAME			
COMMON:	Steele City Historic District		
AND/OR HISTORIC:			
2. LOCATION			
STREET AND NUMBER: (See continuation sheet)			
CITY OR TOWN: Steele City			
STATE:	CODE:	COUNTY:	CCODE:
Nebraska	31	Jefferson	095
3. PHOTO REFERENCE			
PHOTO CREDIT:	Nebraska State Historical Society		
DATE OF PHOTO:	1971		
NEGATIVE FILED AT:	Nebraska State Historical Society 1500 "R" Street, Lincoln, Nebraska		
4. IDENTIFICATION			
DESCRIBE VIEW, DIRECTION, ETC. Site No. 3: Bank Building, view of the north (front) and west (side) elevations. View towards the southeast.			



PROPERTY OF THE NATIONAL REGISTER



UNITED STATES DEPARTMENT OF THE INTERIOR
NATIONAL PARK SERVICE

NATIONAL REGISTER OF HISTORIC PLACES

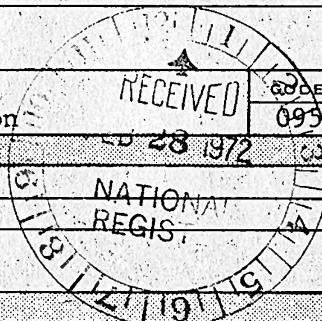
PROPERTY PHOTOGRAPH FORM

(Type all entries - attach to or enclose with photograph)

STATE Nebraska	
COUNTY Jefferson	
FOR NPS USE ONLY	
ENTRY NUMBER	DATE
MAR 16 1972	

SEE INSTRUCTIONS

1. NAME			
COMMON:	Steele City Historic District		
AND/OR HISTORIC:			
2. LOCATION			
STREET AND NUMBER:			
(See continuation sheet)			
CITY OR TOWN:			
Steele City			
STATE:	CODE:	COUNTY:	
Nebraska	31	Jefferson	
3. PHOTO REFERENCE			
PHOTO CREDIT:	Nebraska State Historical Society		
DATE OF PHOTO:	1971		
NEGATIVE FILED AT:	Nebraska State Historical Society 1500 "R" Street, Lincoln, Nebraska		
4. IDENTIFICATION			
DESCRIBE VIEW, DIRECTION, ETC.			
Site No. 3: Bank Building, view of the south (rear) and west (side) elevations. View towards the northeast.			



PROPERTY OF THE NATIONAL REGISTER



UNITED STATES DEPARTMENT OF THE INTERIOR
NATIONAL PARK SERVICE

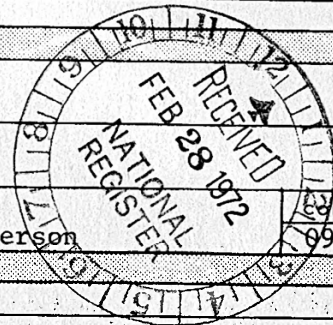
NATIONAL REGISTER OF HISTORIC PLACES
PROPERTY PHOTOGRAPH FORM

(Type all entries - attach to or enclose with photograph)

STATE Nebraska	
COUNTY Jefferson	
FOR NPS USE ONLY	
ENTRY NUMBER MAR 16 1972	DATE

SEE INSTRUCTIONS

1. NAME			
COMMON:		Steele City Historic District	
AND/OR HISTORIC:			
2. LOCATION			
STREET AND NUMBER:			
(See continuation sheet)			
CITY OR TOWN:			
Steele City			
STATE:	CODE:	COUNTY:	CODE:
Nebraska	31	Jefferson	095
3. PHOTO REFERENCE			
PHOTO CREDIT:		Nebraska State Historical Society	
DATE OF PHOTO:		1971	
NEGATIVE FILED AT:		Nebraska State Historical Society 1500 "R" Street, Lincoln, Nebraska	
4. IDENTIFICATION			
DESCRIBE VIEW, DIRECTION, ETC.			
Site No. 4: Baptist Church, view of the south (side) elevation. View towards the north.			



PROPERTY OF THE NATIONAL REGISTER



KNIGHTS PYTHIAS

UNITED STATES DEPARTMENT OF THE INTERIOR
NATIONAL PARK SERVICE

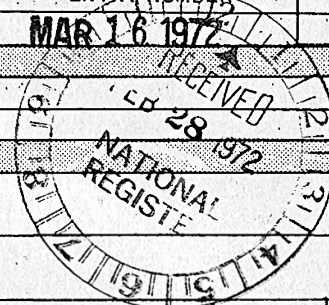
NATIONAL REGISTER OF HISTORIC PLACES
PROPERTY PHOTOGRAPH FORM

(Type all entries - attach to or enclose with photograph)

STATE Nebraska	
COUNTY Jefferson	
FOR NPS USE ONLY	
ENTRY NUMBER	DATE
MAR 16 1972	

SEE INSTRUCTIONS

1. NAME			
COMMON:	Steele City Historic District		
AND/OR HISTORIC:			
2. LOCATION			
STREET AND NUMBER: (See continuation sheet)			
CITY OR TOWN: Steele City			
STATE:	CODE	COUNTY:	CODE
Nebraska	31	Jefferson	095
3. PHOTO REFERENCE			
PHOTO CREDIT:	Nebraska State Historical Society		
DATE OF PHOTO:	1971		
NEGATIVE FILED AT:	Nebraska State Historical Society 1500 "R" Street, Lincoln, Nebraska		
4. IDENTIFICATION			
DESCRIBE VIEW, DIRECTION, ETC. Site No. 4: Baptist Church, view of the south (side) and east (front) elevations. View towards the northwest.			



PROPERTY OF THE NATIONAL REGISTER



UNITED STATES DEPARTMENT OF THE INTERIOR
NATIONAL PARK SERVICE

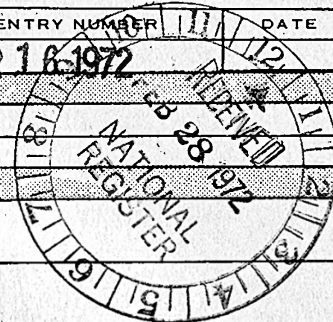
NATIONAL REGISTER OF HISTORIC PLACES
PROPERTY PHOTOGRAPH FORM

(Type all entries - attach to or enclose with photograph)

STATE	Nebraska
COUNTY	Jefferson
FOR NPS USE ONLY	
ENTRY NUMBER	DATE
MAR 16 1972	MAR 12 1972

SEE INSTRUCTIONS

1. NAME			
COMMON:	Steele City Historic District		
AND/OR HISTORIC:			
2. LOCATION			
STREET AND NUMBER:	(See continuation sheet)		
CITY OR TOWN:	Steele City		
STATE:	CODE	COUNTY:	CODE
Nebraska	31	Jefferson	095
3. PHOTO REFERENCE			
PHOTO CREDIT:	Nebraska State Historical Society		
DATE OF PHOTO:	1971		
NEGATIVE FILED AT:	Nebraska State Historical Society 1500 "R" Street, Lincoln, Nebraska		
4. IDENTIFICATION			
DESCRIBE VIEW, DIRECTION, ETC.			
Site No. 5: Zoellin House, view of the north (front) and west (side) elevations. View towards the southeast.			



PROPERTY OF THE NATIONAL REGISTER



UNITED STATES DEPARTMENT OF THE INTERIOR
NATIONAL PARK SERVICE

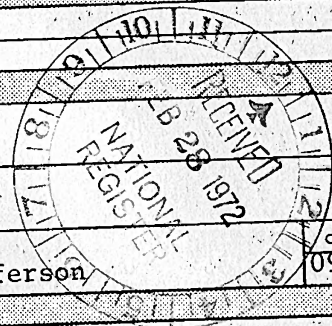
NATIONAL REGISTER OF HISTORIC PLACES
PROPERTY PHOTOGRAPH FORM

(Type all entries - attach to or enclose with photograph)

STATE Nebraska	
COUNTY Jefferson	
FOR NPS USE ONLY	
ENTRY NUMBER	DATE
	MAR 16 1972

SEE INSTRUCTIONS

1. NAME			
COMMON:	Steele City Historic District		
AND/OR HISTORIC:			
2. LOCATION			
STREET AND NUMBER:	(See continuation sheet)		
CITY OR TOWN:	Steele City		
STATE:	Nebraska	CODE 31	COUNTY: Jefferson
			CODE 095
3. PHOTO REFERENCE			
PHOTO CREDIT:	Nebraska State Historical Society		
DATE OF PHOTO:	1971		
NEGATIVE FILED AT:	Nebraska State Historical Society 1500 "R" Street, Lincoln, Nebraska		
4. IDENTIFICATION			
DESCRIBE VIEW, DIRECTION, ETC.			
Site No. 5: Zoellin House, view of the south (rear) and west (side) elevations. Showing possible later south (rear) addition. View towards the northeast.			



PROPERTY OF THE NATIONAL REGISTER



UNITED STATES DEPARTMENT OF THE INTERIOR
NATIONAL PARK SERVICE

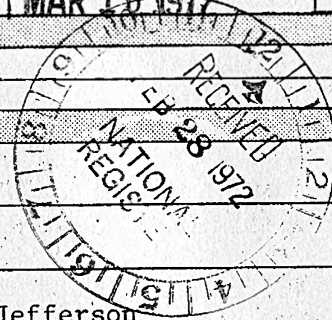
NATIONAL REGISTER OF HISTORIC PLACES
PROPERTY PHOTOGRAPH FORM

(Type all entries - attach to or enclose with photograph)

STATE Nebraska	
COUNTY Jefferson	
FOR NPS USE ONLY	
ENTRY NUMBER	DATE
	MAR 16 1972

SEE INSTRUCTIONS

1. NAME			
COMMON:	Steele City Historic District		
AND/OR HISTORIC:			
2. LOCATION			
STREET AND NUMBER:			
(See continuation sheet)			
CITY OR TOWN:			
Steele City			
STATE:	CODE:	COUNTY:	CODE:
Nebraska	31	Jefferson	095
3. PHOTO REFERENCE			
PHOTO CREDIT:	Nebraska State Historical Society		
DATE OF PHOTO:	1971		
NEGATIVE FILED AT:	Nebraska State Historical Society 1500 "R" Street, Lincoln, Nebraska		
4. IDENTIFICATION			
DESCRIBE VIEW, DIRECTION, ETC.			
Site No. 5: Zoellin House, view of the west (side) elevation. View towards the northeast.			



PROPERTY OF THE NATIONAL REGISTER



Old Church to be restored.



(over)

Old Bank restored, opened in
aug. 1970



old Blacksmith shop to be
restored



Old Livery stable to be restored