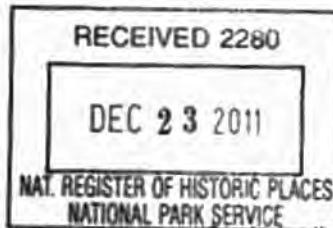


United States Department of the Interior
National Park Service

NATIONAL REGISTER OF HISTORIC PLACES
REGISTRATION FORM



1077

This form is for use in nominating or requesting determinations for individual properties and districts. See instructions in How to Complete the National Register of Historic Places Registration Form (National Register Bulletin 16A). Complete each item by marking "x" in the appropriate box or by entering the information requested. If any item does not apply to the property being documented, enter "N/A" for "not applicable." For functions, architectural classification, materials, and areas of significance, enter only categories and subcategories from the instructions. Place additional entries and narrative items on continuation sheets (NPS Form 10-900a). Use a typewriter, word processor, or computer, to complete all items.

1. Name of Property

historic name BURROWS, WATERS AND ELSA, HISTORIC DISTRICT

other names/site number Bay Preserve at Osprey, FMSF#SO06259

2. Location

street & number 400 Palmetto Avenue N/A not for publication

city or town Osprey N/A vicinity

state FLORIDA code FL county Sarasota code 115 zip code 34229

3. State/Federal Agency Certification

As the designated authority under the National Historic Preservation Act, as amended, I hereby certify that this nomination request for determination of eligibility meets the documentation standards for registering properties in the National Register of Historic Places and meets the procedural and professional requirements set forth in 36 CFR Part 60. In my opinion, the property meets does not meet the National Register criteria. I recommend that this property be considered significant nationally statewide locally. (See continuation sheet for additional comments.)

Barbara C. Mattick, DSHPO 12/12/2011
Signature of certifying official/Title Date

State Historic Preservation Officer, Division of Historical Resources
State or Federal agency and bureau

In my opinion, the property meets does not meet the National Register criteria. (See continuation sheet for additional comments.)

Signature of certifying official/Title Date

State or Federal agency and bureau

4. National Park Service Certification

I hereby certify that the property is:

Signature of the Keeper

Date of Action

- entered in the National Register
 See continuation sheet
- determined eligible for the National Register
 See continuation sheet.
- determined not eligible for the National Register
 See continuation sheet.
- removed from the National Register.
- other, (explain) _____

5. Classification

Ownership of Property

(Check as many boxes as apply)

- private
- public-local
- public-State
- public-Federal

Category of Property

(Check only one box)

- buildings
- district
- site
- structure
- object

Number of Resources within Property

(Do not include any previously listed resources in the count)

Contributing	Noncontributing	
5	7	buildings
0	0	sites
1	0	structures
0	0	objects
6	7	total

Name of related multiple property listings

(Enter "N/A" if property is not part of a multiple property listing.)

N/A

Number of contributing resources previously listed in the National Register

0

6. Function or Use

Historic Functions

(Enter categories from instructions)

- DOMESTIC/Single Dwelling
- DOMESTIC/Single Dwelling
- DOMESTIC/Single Dwelling
- SECONDARY STRUCTURE/Garage Apartment
- SECONDARY STRUCTURE/Pool House
- SECONDARY STRUCTURE/Boathouse

Current Functions

(Enter categories from instructions)

- RECREATION AND CULTURE/Art Gallery/Offices
- RECREATION AND CULTURE/Club Office
- DOMESTIC/Staff Housing
- RECREATION AND CULTURE/Art Studio/Residence
- SECONDARY STRUCTURE/Pool House
- SECONDARY STRUCTURE/Boathouse/Observation Deck

7. Description

Architectural Classification

(Enter categories from instructions)

- LATE 19TH & EARLY 20TH CENTURY REVIVALS/Georgian Revival
- NO STYLE/Frame Vernacular

Materials

(Enter categories from instructions)

- foundation Brick
- walls Brick
- Wood
- roof Asphalt Shingle
- other

Narrative Description

(Describe the historic and current condition of the property on one or more continuation sheets.)

**United States Department of the Interior
National Park Service**

**NATIONAL REGISTER OF HISTORIC PLACES
CONTINUATION SHEET**

Section number 7 Page 1

WATERS AND ELSA BURROWS HISTORIC DISTRICT
OSPREY, SARASOTA COUNTY
DESCRIPTION

SUMMARY

The Waters and Elsa Burrows Historic District, also known as Bay Preserve at Osprey, is named for the family who purchased the property in 1929 and built the two-story red brick Georgian Revival style residence in 1931. In addition to the Georgian Revival style main residence that stands at the edge of Little Sarasota Bay, the property contains two contributing wood frame residences referred to historically as Bungalow 1 and Bungalow 2, which were constructed between 1910 and 1929; a contributing wood frame boathouse located at the end of a wooden dock extending out into the waters of the bay; and a concrete seawall constructed c. 1935. The small contributing residences that predate the main house were built for use as rental winter residences on property purchased from John G. Webb, the founder of the community of Osprey. There are also seven noncontributing buildings in the district. These are the masonry garage constructed for the Burrows in 1932, which had a second story apartment added to it c. 1953; the wood frame Bamboo Cottage, constructed c. 1910; the three ancillary buildings located on the Bamboo Cottage lot that occupies a parcel of land not owned by the Burrows; and the pool house for the swimming pool constructed in 1989. In 2007, the swimming pool was filled with crushed concrete then covered with beach compactable sand. The Bamboo Cottage was added to the property in 1994 by Richard and Cornelia Matson who obtained the Burrows Estate in 1985.

SETTING

The Waters and Elsa Burrows Historic District is located approximately 11 miles south of the city of Sarasota on an approximately 4.2-acre waterfront parcel in Sarasota County, within the unincorporated community, of Osprey. Osprey is a small town on the Gulf of Mexico with a population of less than 10,000. For shopping, there are several areas including the Osprey Village shops, Blackburn Point Plaza and Southbay Shopping Center. Virtually all of the shopping in Osprey is on Tamiami Trail (U.S. Highway 41). Several of the local restaurants are on "the Trail" and some waterfront dining is available at Spanish Point or on Blackburn Point Road. The Burrows property is accessed from Tamiami Trail via West Oak Street to Palmetto Drive. The area south of the property is occupied by a residential subdivision. North of the property one finds deep woods lying next to another residential subdivision. The Burrows residence backs onto Little Sarasota Bay. Originally, the site landscape was characterized by heavy vegetation with clusters of oaks and palms. In the 20th century, exotic species invaded the landscape. Most of these were removed by the current owner, a non-profit conservation foundation. Native vegetation has been preserved at the perimeter of the property and along the shell access drive, Palmetto Avenue.

PHYSICAL DESCRIPTION

The property contains large grassy open spaces between the buildings, a defining feature dating from the Burrows ownership of the property, which began in 1929. On the eastern end of the property, the shell entrance drive (Photos 1-4) wends through dense native vegetation past two wood frame cottages and ancillary structures

United States Department of the Interior
National Park Service

**NATIONAL REGISTER OF HISTORIC PLACES
CONTINUATION SHEET**

Section number 7 Page 2

WATERS AND ELSA BURROWS HISTORIC DISTRICT
OSPREY, SARASOTA COUNTY
DESCRIPTION

terminating at a circular drive in front of the Burrows residence. This principal residence is set close to the edge of Little Sarasota Bay. A historic concrete seawall extends along the western edge of the property and terminates on a sandy beach area. A boathouse is found at the end of a wooden pier that extends out into the bay. Located southeast of the main house are the noncontributing pool house and the noncontributing Bamboo Cottage and several outbuildings.

CONTRIBUTING RESOURCES

Burrows Residence

Exterior

The Burrows Residence, constructed in 1931, is an excellent example of an early 20th century Georgian Revival style building and contains a total of approximately 6,100 square feet. The house has an irregular ground plan, organized as a large two-story rectangular main block with a smaller north wing. The house rests on a continuous brick foundation and is covered by hip roofs on the main block and north wing. The roofs are covered with slate and has three brick chimneys on the main block. The exterior walls are constructed of red brick laid up in an American bond with five rows of stretchers and a sixth course of alternating headers and stretchers, and concave tooling on the mortar joints. The fenestration is steel vertical casement windows, some of which are surmounted by transom lights, an unusual feature for this style but common in Florida residential architecture of this period. The windows are capped with cast concrete lintels and have cast concrete sills.

The **Northeast Facade** is composed of two sections, (Photos 5-6) the south rectangular block which is dominated by a monumental portico (Photo 7) with a triangular pediment supported by four colossal Tuscan columns surmounted by a simple entablature with dentils beneath the cornice. The triangular pediment also has dentils beneath the raking cornice. In the center of the pediment is an oculus window set in a molded wooden frame. The fenestration of the main block of the facade has a nonsymmetrical arrangement of metal casement windows. The windows south of the portico on the first story consist of two sets of paired 8/8-light metal casement windows surmounted by 8-pane fixed transom lights. North of the portico one finds two sets of paired 6/6-light windows topped by 4-pane transoms. All of the windows have cast concrete lintels and sills. The fenestration of the east facade of the north wing of the house consists two sets of paired 6/6-light metal casement windows on the first story and two sets of paired 8/8-light windows with 4-light transoms on the second story. In the center of the facade is the main entrance to the house which consists of a single-leaf six panel wood door flanked by sidelights and surmounted by a fanlight set in arched brick surround topped by brick voussoirs and a cast concrete keystone. The main doorway (Photo 8) is flanked by two 6-light single casement windows that have flat "jack" arch lintels with cast concrete keystones and cast concrete lintels. The entrance portico terrace is raised above grade. Originally there was a small step up to the main floor level; in

United States Department of the Interior
National Park Service

NATIONAL REGISTER OF HISTORIC PLACES
CONTINUATION SHEET

Section number 7 Page 3

WATERS AND ELSA BURROWS HISTORIC DISTRICT
OSPREY, SARASOTA COUNTY
DESCRIPTION

2009 the paving stones were re-laid on a gentle slope to meet accessibility requirements at the door threshold, as part of a repair for the floor structure below.¹ The terrace is covered with blue slate stone pavers set in concrete.

The **Southeast Elevation** (Photos 9-11) is symmetrically composed with two pairs of larger windows on either side of smaller centrally placed windows. On the first story, the larger paired 8/8-light casement windows feature transoms with two rows of 4-lights each. The second story windows contain transoms with one row of 4-lights over the 8-light paired casement sash windows.

The **Northwest Elevation** (Photo 12) had two minor alterations were made during the 1980s. Two windows had their casement sashes replaced with a single pane of glass. The small masonry opening with rowlock header course and projecting brick sill with a brick lattice infill provides ventilation to an original interior closet. The secondary entrance has a wood and glass panel door set in a classical surround with pilasters and an entablature. The entranceway is flanked by single-pane sidelight and a three-pane transom light.

The **Southwest Facade** (Photos 13-15) is dominated by a massive two-story veranda that extends the full width of the main block of the house. The 5-bay veranda has a hipped roof that is supported by with six colossal Tuscan columns surmounted by an entablature consisting of a plain frieze and a cornice decorated with modillions. The columns rest on a concrete deck that is accessed by three brick and concrete steps. The central entranceway is fitted with metal and glass French doors topped by a 4-light transom. The doorway is flanked by paired 10/10-light metal casement windows surmounted by 4-light transoms. The other four bays of the first story contain French doors similar to the central entranceway. The columns carry the second floor deck about midway through their height. A pair of French doors are found in the center of the facade. The French door are flanked by a pair of single leaf 8-light metal casement windows. The outer four bays of the veranda feature French doors similar to those found in the center of the facade. The upper veranda is bordered by a wrought iron balustrade.

Interior

Essentially unchanged from its historic layout, the floor plan of the Residence is organized in two blocks that were constructed during the same period. The main house block was where the family resided, with public and entertaining spaces on the first floor and sleeping areas on the second floor. This section is organized around a central hall that runs from east to west and opens onto the waterside terrace area. Principal first floor spaces include the entrance vestibule, stair hall, living room, dining room and butler's pantry. The Adam Colonial

¹ In 2009, a sensitively executed rehabilitation project was completed and included minor alterations to meet accessibility requirements and systems upgrades to reflect the change in use.

United States Department of the Interior
National Park Service

**NATIONAL REGISTER OF HISTORIC PLACES
CONTINUATION SHEET**

Section number 7 Page 4

WATERS AND ELSA BURROWS HISTORIC DISTRICT
OSPREY, SARASOTA COUNTY
DESCRIPTION

style² features carry through the interiors and include the cornices and painted woodwork; door surrounds, base moldings, wainscot and panel moldings, stained wood strip flooring and plaster walls.

First Floor

The principal stair balustrade and risers are painted white with stained wood treads (Photos 16-17) and carved wood painted trim on the stringer face (Photo 18). The reception hall contains elaborate over-door moldings featuring a curved broken pediment (Photo 19). The Neoclassical style fireplace in the entrance hall features urns and garlands (Photos 20-21).

The interior has been well maintained and preserved and is in excellent condition. Minor alterations include the addition of a decorative 18th century fireplace surround in the Living Room installed by a previous owner (Photos 22-23). The first floor rear porch has been enclosed with a modern screen system inside the two story columns and retains the original flagstone paving on the terrace (Photo 24).

The second floor stair hall is divided into two areas with a cased opening defined by a square wall pilaster and a Doric column on each side (Photos 25-26). The three bedrooms (Photo 27) retain their simple decorative flat plaster work.

The service wing is contained in the smaller block and contains the kitchen, pantry and sleeping quarters. This block is connected to the main wing of the house through a butler's pantry area on the first floor. The kitchen was remodeled and is compatible with the style of the house (Photo 28). The spaces are now used for public functions and meetings. The second floor of the service wing originally contained four bedrooms and a bath, and is now used for offices.

Alterations

The minor changes to the north facade are noted in the narrative above. The second floor of the service wing has been discretely remodeled by the current owner to provide accessibility and included the insertion of a small elevator in a closet, and one second floor bath has been removed to facilitate circulation between the wings of the house.³

² The Adam, or Federal style featured more elaborate "classical" decorative features than the more sedate Georgian Revival.

³ The work was completed in 2009 by the Conservation Foundation of the Gulf Coast. Drawings for this work are on file in their archives.

United States Department of the Interior
National Park Service

**NATIONAL REGISTER OF HISTORIC PLACES
CONTINUATION SHEET**

Section number 7 Page 5

WATERS AND ELSA BURROWS HISTORIC DISTRICT
OSPREY, SARASOTA COUNTY
DESCRIPTION

Burrows Dock and Boathouse

Exterior & Interior

The Boathouse (Photos 29-32), constructed c. 1932 is a Frame Vernacular structure whose defining features include a simple rectangular form, located at end of a wood dock; an internal dock platform; durable construction materials, including the pecky cypress vertical board and batten siding, substantial wood framing members, decorative top rails and a flat roof deck with an open riser wood stair railing. The building has a simple rectangular massing and a flat roof, capped by a railing. The structure contains a large opening at water level for boat access. The stair to the roof deck was originally located across this opening.

Alterations

Changes to the boathouse in a 2008 renovation project included the relocation of the stairs to the roof deck from the east elevation to the north elevation. The balustrade surrounding the observation deck had become deteriorated and was replaced by a new one, recreating the appearance of the original, based on historic photographic evidence. The interior of structure was also repaired.

Burrows Seawall

The concrete seawall (Photo 33) was constructed c. 1935 to protect the property from erosion and tidal action. Stretching along the bay front from north to south of the original parcel, the wall is approximately 256 feet long. The seawall retains its integrity as a water-related engineering feature. The wall is constructed from formed and poured concrete with remaining traces of a parge coat⁴ and has a projecting integrally poured concrete cap. The wall has been maintained in good condition.

Bungalow 1

Exterior

The former residence named Bungalow 1 at 343 Palmetto Avenue (Photos 34-38), constructed some time before 1930, is located at the south-east entrance to the property at the end of Palmetto Avenue. The building lies east of the principal residence. An ancillary structure is located to the south and was originally used as a garage for this building. The residence is an example of the Bungalow style. The building retains all of its character defining features. These include a U-shaped ground plan with gable roofs now clad with asphalt shingles, a

⁴ A thin coat of a cementitious or polymeric mortar applied to concrete for refinement of the surface.

United States Department of the Interior
National Park Service

**NATIONAL REGISTER OF HISTORIC PLACES
CONTINUATION SHEET**

Section number 7 Page 6

WATERS AND ELSA BURROWS HISTORIC DISTRICT
OSPREY, SARASOTA COUNTY
DESCRIPTION

central brick chimney, weatherboard siding, cross gable roofs on main hip roof with shed dormer, and half round gable end vents.

The east facade features a projecting screened entrance porch with shed roof and dormer, exposed square cut rafter ends and gutter system, tapered porch columns on brick knee wall with concrete steps and wall caps and brick foundation piers. This porch was screened in by the early 1950s. The roof features a shed dormer with a pair of small horizontal 4-light hinged window sash.

The north and south facades feature the typical vertical 4/1-light wood windows with double-hung sash and substantial wood casings. The west facade features the courtyard formed by the wings of the U-shaped plan. The south wing features casement window sash in the kitchen area, a wood and half light door, and the central brick chimney.

Interior

The interior spaces (Photos 39-42) of the house are organized around the central main space, public function rooms such as the Dining and Kitchen areas were located in the south wing of the residence and the bedrooms and baths were located in the north wing. Most of the rooms feature the original yellow heart pine wood strip flooring. The bath contains original white mosaic floor tiles. Most of the spaces have plaster walls and ceilings. The pantry off the kitchen features painted wood horizontal bead board. The brick fireplace is painted white and has a wood mantle on top of the brick surround. The hearth features variegated clay tile in earth tone colors set flush in the wood floor.

Garage

The residence has an original garage (Photo 43) that contains some of the same architectural details seen on the bungalow. This simple gable-roofed wood frame structure is clad with the same siding material as the Bungalow, and has two paired side-hinged two-panel doors. This building is currently used for storage.

Bungalow 2

Exterior

Bungalow 2 at 369 Palmetto Avenue (Photos 44-48), constructed c. 1930, is located near the east entrance to the property to the north of Bungalow 1. The Wood Frame Vernacular building consists of four distinct sections, and the house grew over time with two shed roof additions to the north. All of these components appear in an historic photograph from the early 1950s. The main rectangular block of the house is covered with a hip roof and features a covered entry porch with modern wood posts and railings. The first addition to the north has a flat roof with projecting rafter ends. The northernmost addition has a shed roof. The south block is a large

United States Department of the Interior
National Park Service

**NATIONAL REGISTER OF HISTORIC PLACES
CONTINUATION SHEET**

Section number 7 Page 7

WATERS AND ELSA BURROWS HISTORIC DISTRICT
OSPREY, SARASOTA COUNTY
DESCRIPTION

screened porch with hip roof, and the chimney. Character defining features include, drop lap wood siding, hip roofs, projecting porch with hip roof and knee walls clad with siding, brick and concrete foundation piers, wood windows with vertical lite 1/1 double-hung sash, substantial wood casings, wood and glass entrance door with full lite, wood and glass exterior doors at the rear of the cottage, and exposed rafter tails.

Interior

The interior plan (Photo 49) reflects the incremental additions made to the structure over time. The kitchen and bath have been remodeled and a closet was converted to a contemporary half bath. The north-west corner of the first addition was very likely a screened porch that was enclosed. Most of the rooms feature a pine wood strip flooring in good condition. Some spaces retain the early wood beadboard wall and ceiling finishes; these are visible in the bath storage closets and in the closet off the living room. The living room features a brick fireplace surround that has been painted white.

Alterations

The original exterior materials are generally intact. The original roof covering was replaced with asphalt shingles. The interior finishes have undergone some alterations including the use of gypsum wall board in most of the rooms. The kitchen has been remodeled and a closet was converted to a contemporary half bath. The baths have been remodeled with modern ceramic tile floors.

Ancillary Structure

A modern (Photo 50) carport is located to the west of the cottage and is considered a noncontributing element.

NONCONTRIBUTING RESOURCES

Burrows Garage

Exterior

Constructed in 1932, the garage (Photos 51-54) was originally a one-story brick structure, surmounted by an octagonal cupola with a curved copper roof. Located to the south of the main shell entrance drive leading to the main residence, this building was originally designed in the Colonial Revival style, whose character defining features included: a simple rectangular form, with a smaller rectangular wing on north end, a gable roof form, with a steep roof pitch and a bell-shaped copper-roofed cupola, red brick masonry exterior walls laid up in common bond with 6th course Flemish headers and concave mortar joints, steel paired 8/8-light casement windows, cast concrete lintels and sills. An elaborate cast cornice ornament with dentils is retained along the

United States Department of the Interior
National Park Service

**NATIONAL REGISTER OF HISTORIC PLACES
CONTINUATION SHEET**

Section number 7 Page 8

WATERS AND ELSA BURROWS HISTORIC DISTRICT
OSPREY, SARASOTA COUNTY
DESCRIPTION

original roof line. The second floor wood frame addition, with asbestos siding and aluminum jalousie windows was added in the mid-1950s.

The east facade is oriented towards the site entrance drive and contains the original garage doors. Two sets of folding garage doors are symmetrically placed in the center of this section of the garage, with the north wing containing a steel casement window. The second floor addition sits over the cast stone cornice. The placement of the jalousie windows in this facade does not align with the openings below. The top of the cupola is still visible as it was incorporated within the wood rafter framing of the second floor addition.

The north facade features the gable end of the main garage block and the north wing. The west facade faces the water and the main residence. There are three sets of steel casement windows on the first floor and an entrance door into the utility room. The second floor wall area is punctured by two large groupings of jalousie windows and plastic decorative (non-functional) shutters over the asbestos siding. The south facade is the "service" side of the building containing the electrical service entrance, meter and panels, and faces away from the public area of the site.

Interior

The first floor interior (Photo 55) contains the garage bays and is set on a concrete slab at grade, with exposed brick walls and a plaster ceiling. The small north wing houses mechanical equipment. The second floor (Photo 56) has been renovated to be a one-bedroom apartment.

Alterations

The building was altered soon after 1953, when the property was acquired by the Valentine family and the second story frame addition, containing an apartment, was constructed. The roof framing appears to have been retained and was raised up on top of the second floor wall framing. The cupola was encased within the framing and its bell-shaped roof form is still visible. The addition of the second story after the Burrows no longer owned the property has rendered the resource noncontributing.

Bamboo Cottage

Exterior

The Bamboo Cottage (Photos 57-61) at 331 Palmetto Avenue is located to the south of the main Residence, and is set back from the waterfront. Although the original portion of the building was likely constructed sometime between 1910 and 1929 as a fisherman's cottage, the exact date is not known. The cottage is an accretion of several building sections added over several decades. The building form consists of five distinct sections. The earliest section of the house, containing the Living Room and fireplace, was covered with a fairly steep-pitched

United States Department of the Interior
National Park Service

NATIONAL REGISTER OF HISTORIC PLACES
CONTINUATION SHEET

Section number 7 Page 9

WATERS AND ELSA BURROWS HISTORIC DISTRICT
OSPREY, SARASOTA COUNTY
DESCRIPTION

gable roof and likely had a hip roof over an open front porch. This eight-foot section on the west side, past the vertical siding board on the facade and the interior beam, was enclosed early in the structure's history, based on the use of similar materials, doors, windows and framing techniques. All of the sloped roof sections now are clad with fiberglass shingles. The west (water side) screened porch was expanded at least in two sections, the westernmost section dating from the 1960s. The enclosed porch features a steep shed roof on the south side of the building, and was likely a screened porch.

This space was enclosed prior to the 1960s, as the windows match the design of the wood windows on the west facade. The east (rear) addition, containing the space labeled Bedroom 2, has a flat roof and dates from the 1960s, based on the account of a local informant, whose family owned and lived in the cottage through three generations.⁵ This addition is clad with vertical board and battens siding, and features aluminum awning windows and sliding glass doors on the east facade. A modern flat-roofed screen porch forms an entrance on the north side at the eastern end of the building and includes an enclosed area that expands the space of the kitchen.

The Bamboo Cottage is an example of the Frame Vernacular style with minimal ornamentation. The character defining features include an irregular plan shape that grew over time from the original rectangular cottage, two distinct patterns of horizontal wood lap siding on earlier sections of the cottage, a gable roof over the main block of house and a hip roof at the west end, a projecting enclosed porch on the south side with a shed roof, brick chimney, a mix of brick and concrete foundation piers, 2/2-light double-hung wood sash windows with wide wood casings, wood and glass entrance doors, and exposed rafter tails.

Interior

The interior (Photos 62-63) plan reflects the incremental additions made to the structure over time. Most of the rooms in the main section and west addition feature pine wood strip flooring in good condition. Bedroom 2 had a plywood subfloor and carpet. The interior circulation layout has been altered to its current configuration. The walls and ceilings of the modern additions, as well as the kitchen, bath and bedroom, are covered with modern gypsum board. The earlier sections of the house have vertically applied bead board, with a quarter round base molding on the walls and wood bead board ceilings nailed directly to the ceiling joists. The ceiling boards change direction past the beam that signifies the early west side addition of about 8 feet in the Living Room.

⁵ Interview with David Byrd, by Robin Roberts, April 24, 2009. Notes on file in archives of the Conservation Foundation of the Gulf Coast.

United States Department of the Interior
National Park Service

**NATIONAL REGISTER OF HISTORIC PLACES
CONTINUATION SHEET**

Section number 7 Page 10

WATERS AND ELSA BURROWS HISTORIC DISTRICT
OSPREY, SARASOTA COUNTY
DESCRIPTION

Alterations

The modern era alterations include the construction of the east addition from the early 1960s. The roofs were replaced with a modern fiberglass shingle roof. The baths and the kitchen area have been remodeled with modern ceramic tile floors.

Ancillary Structures

There are three outbuildings associated with Bamboo Cottage. A small storage building (Photo 64) clad in the vertical board siding is located just to the east and was constructed around the time of the east addition (modern) and is considered noncontributing. Two outbuildings (Photos 65-66) are located further east. An early garage building features wood out-swinging garage doors on the west facade, a wood and glass entrance door on the east facade. The siding on this structure matches the earliest type of horizontal lap siding on the cottage. The noncontributing pole-supported structure is conventionally framed, with a 5 V-crimp metal roof covering, and was constructed in the 1960s.⁶

Pool House

The noncontributing swimming pool and Mediterranean Revival style pool house (Photo 67) were added in 1989 by the Matsons.⁷ The current owner filled in the pool in 2007. There are no plans to demolish the structure, and it will be used as a performing arts pavilion/stage.

The most recent survey, the "Archaeological and Historical Survey of the Bay Preserve at Osprey property in Sarasota County, Florida," conducted by the Panamerican Consultants, Inc., and dated October, 2006, identified a Resource Group, (8SO6259), containing these three previously identified historic buildings, plus 3 other buildings and 1 structure, as listed below.⁸

CONTRIBUTING RESOURCES

<u>Address</u>	<u>Name</u>	<u>Use</u>	<u>Style</u>	<u>Date</u>	<u>MSF#</u>
343 Palmetto Ave	Bungalow 1	Residence	Bungalow	c. 1920	8SO1945
343A Palmetto Ave	—	Garage	Frame Vernacular	c. 1920	8SO1945
369 Palmetto Ave	Bungalow 2	Residence	Bungalow	c. 1920	8SO1946

⁶ The changes to the building noted as occurring in the 1960s were discussed in the interview with the local informant David Byrd, noted in note 4 above.

⁷ Historic Designation report by Panamerican Consultants Inc., September 2006, p. 40.

⁸ Panamerican Consultants, pp.5, 8-11, "Recommendation and Conclusions", p. 57.

United States Department of the Interior
National Park Service

**NATIONAL REGISTER OF HISTORIC PLACES
CONTINUATION SHEET**

Section number 7 Page 11

WATERS AND ELSA BURROWS HISTORIC DISTRICT
OSPREY, SARASOTA COUNTY
DESCRIPTION

400 Palmetto Ave	Burrows Residence	Office/Museum	Georgian Revival	c. 1931	8SO1947
400B Palmetto Ave	—	Boathouse	Frame Vernacular	c. 1932	8SO6264
N/A	Seawall	Structure	N/A	c. 1935	8SO6265

NONCONTRIBUTING RESOURCES

331 Palmetto Ave	Bamboo Cottage	Residence	Frame Vernacular	c. 1910	8SO6260*
331A Palmetto	—	Storage Shed	Frame Vernacular	c. 1950	8SO6260*
331B	—	Storage Shed	Frame Vernacular	c. 1950	8SO6260*
331C	—	Carport	Frame Vernacular	c. 1950	8SO6260*
369A Palmetto Ave	—	Carport	Frame Vernacular	c. 1980	8SO1946
400A Palmetto Ave	Burrows Garage	Studio/Apt	Colonial Revival	c. 1932	8SO6263+
400C Palmetto Ave	Pool House	N/A	Mediterranean Rev	c. 1989	N/A

*The Bamboo Cottage was not owned by Waters and Elsa Burrows. It was acquired in 1994 by Richard and Cornelia Matson subsequent owners of the Burrows property. In 2006, the Sarasota Conservation Foundation (now called the Conservation Foundation of the Gulf Coast) acquired the property and has worked to preserve the residence.

+The Burrowses sold the property and buildings in 1953 to Glen and Betty Valentine. In the mid-1950s Valentines added the second floor apartment above the Burrows garage.

8. Statement of Significance**Applicable National Register Criteria**

(Mark "X" in one or more boxes for the criteria qualifying the property for National Register listing.)

- A** Property is associated with events that have made a significant contribution to the broad patterns of our history.
- B** Property is associated with the lives of persons significant in our past.
- C** Property embodies the distinctive characteristics of a type, period, or method of construction or represents the work of a master, or possesses high artistic values, or represents a significant and distinguishable entity whose components lack individual distinction.
- D** Property has yielded, or is likely to yield information important in prehistory or history.

Criteria Considerations

(Mark "X" in all the boxes that apply.)

Property is:

- A** owned by a religious institution or used for religious purposes.
- B** removed from its original location.
- C** a birthplace or grave.
- D** a cemetery.
- E** a reconstructed building, object, or structure.
- F** a commemorative property.
- G** less than 50 years of age or achieved significance within the past 50 years

Narrative Statement of Significance

(Explain the significance of the property on one or more continuation sheets.)

9. Major Bibliographical References**Bibliography**

Cite the books, articles, and other sources used in preparing this form on one or more continuation sheets.)

Previous documentation on file (NPS):

- preliminary determination of individual listing (36 CFR 36) has been requested
- previously listed in the National Register
- previously determined eligible by the National Register
- designated a National Historic Landmark
- recorded by Historic American Buildings Survey # _____
- recorded by Historic American Engineering Record

Area of Significance

(Enter categories from instructions)

ARCHITECTURE

SOCIAL HISTORY

Period of Significance

1931-1953

Significant Dates

1931

Significant Person

Burrows, Waters

Cultural Affiliation

N/A

Architect/Builder

Arch: Unknown

Blder: Unknown

Primary location of additional data:

- State Historic Preservation Office
- Other State Agency
- Federal agency
- Local government
- University
- Other

Name of Repository

United States Department of the Interior
National Park Service

**NATIONAL REGISTER OF HISTORIC PLACES
CONTINUATION SHEET**

Section number 8 Page 1

WATERS AND ELSA BURROWS HISTORIC DISTRICT
OSPREY, SARASOTA COUNTY
SIGNIFICANCE

SUMMARY

The Waters and Elsa Burrows Historic District is significant at the local level under Criterion C for the large Georgian Revival style main residence constructed for Dr. Waters F. Burrows (1878-1966) and his wife Elsa Scherer Burrows (1878-1955) in 1931. The district is also significant under Criterion B in the area of Social History for its association with Dr. Burrows and his wife from 1929 to 1953. The Burrowses made important contributions to the well being of Sarasota County, Florida. They had large farming operations in the area and donated large tracts of property to the local and state governments with the goal of public benefit during the Great Depression, the Second World War, and the post-war era. Besides the main house, the district includes two small contributing wood frame residences constructed between 1910 and 1930, which the Burrowses purchased as part of their property for use as guesthouses. The other contributing resources in the district are a wood frame dock and boathouse constructed c. 1932 and a concrete seawall constructed c. 1935. All of these outbuildings and structures reflect the Burrows' use of the property.

HISTORICAL CONTEXT

In 1867, pioneers John and Eliza Webb settled on the property, planting 10 acres in citrus and vegetables. Their homestead included a citrus packing house, a boat building operation, and Webb's Winter Resort where boarders from the north would stay. Webb named his holdings "Spanish Point" and founded the local community of Osprey, where a post office was opened in 1884.⁹ One of his sons, John W. Webb, purchased land from the State of Florida adjacent to his parents' home in 1882 and 1888.¹⁰ These holdings included what became the Burrows Estate. The area remained sparsely populated with a few scattered homesteads until the area came to the interest of Bertha Palmer, a wealthy Chicago widow, credited with promoting the development of this area of Florida after 1910. Mrs. Palmer acquired the Webb homestead, located just to the north and east of the Burrows property, and created an elegant winter retreat.¹¹

Over a 25-year period, the Webb holdings were subdivided and sold off to various northern buyers who were interested in constructing winter homes in the mild climate. In all, five houses were constructed along what is now Palmetto Drive.¹² Two of these were demolished or removed to another location before 1929. An undated map shows Lots 1-6 on Little Sarasota Bay and notes that "Lots No. 1 to 6 sold to different people from the north for the winter...."¹³ One buyer, Joshua Bowles of Bardstown, Kentucky, bought a 35 foot wide parcel in

⁹ Matthews, Jan Snyder. *Edge of Wilderness: A Settlement History of Manatee River and Sarasota Bay 1528-1885*. Sarasota, FL: Coastal Press, 1983.

¹⁰ Panamerican Consultants, Inc., "Archaeological and Historical Survey of the Bay Preserve at Osprey property in Sarasota County, Florida", Tampa, FL, September 2006, p.28.

¹¹ Panamerican Consultants, Inc., p. 26-7.

¹² Telephone interview with Robin Roberts, Director of Programs, Conservation Foundation of the Gulf Coast, August 18, 2011.

¹³ Panamerican Consultants, Inc., p. 30, and Figure 4, undated, copy of hand drawn map, p. 32.

United States Department of the Interior
National Park Service

**NATIONAL REGISTER OF HISTORIC PLACES
CONTINUATION SHEET**

Section number 8 Page 2

WATERS AND ELSA BURROWS HISTORIC DISTRICT
OSPREY, SARASOTA COUNTY
SIGNIFICANCE

Lot 4, just to the north side of Lot 3, from Elizabeth A. White, in 1908.¹⁴ The three wood frame houses in the district date from between 1910 and 1920 and were likely built as winter residences for the individuals who owned small parcels of Lot 4.

HISTORICAL SIGNIFICANCE

The region of Southwest Florida was sparsely populated until the 20th century, when the appeal of a mild climate to increasingly prosperous northerners provided the catalyst for the cycles of intensive development that characterize the state's economic growth and settlement patterns. The historic resources in the historic district are related through their proximity to the water and their function as winter vacation homes or year-round residences. The 1920s were a "boom period" in Florida development, and wealthy northerners were drawn to the region. After the real estate "bust" of 1926, Florida property was increasingly affordable to upper middle class northerners.

In 1929, retired New York surgeon, Dr. Waters F. Burrows (1879-1966) and his wife Elsa Scherer Burrows (1884-1955), began purchasing pieces of property that were originally part of Lot 4 for their retirement home.¹⁵ The Burrows spent three years reassembling Lot 4, with the exception of the southern 35-foot strip of land that had been acquired by J. Bowles, then sold to John and Marie J. Bird in the early 1920s.¹⁶ The Burrows built a two-story Georgian Revival style residence overlooking the Little Sarasota Bay, and a Colonial Revival style masonry garage east of the main house that originally echoed some of the architectural features of the principal residence. They also constructed a wood frame boathouse on the end of a wooden dock and a seawall to protect their property from erosion by the tidal ebb and flow of Little Sarasota Bay. They also acquired ownership of two of the existing one-story residences located at the east end of the property.

The Burrows were key figures in local commerce from the 1930s through the early 1950s. In addition to their residential property, the Burrows acquired extensive land holdings nearby, turning the range land into a farm with citrus groves, vegetable fields, fruit orchards and a sawmill. They owned interests in real estate for commercial development, including a half interest in the Lido bathing beach and pavilion in the City of Sarasota, which was given to the city in 1936 for public use. Other holdings included apartment buildings and a car dealership in Sarasota. They were known for philanthropy, through their donations of large amounts of property to the city of Sarasota and to the state of Florida for the benefit of the public. Dr. Burrows was the editor and publisher of a magazine called The Commonwealth,¹⁷ and was a speaker on political and social

¹⁴ Boundary Survey, prepared by Red Stake Surveyors, dated 3/14/2006, legal description as furnished from the title policy.

¹⁵ Panamerican Consultants, Inc., p.30.

¹⁶ Interview with David Byrd, former resident of Bamboo Cottage, by Robin Roberts, April 24, 2009.

¹⁷ During the 1930s, it was published monthly in Bradenton, Florida, with editorial offices in Sarasota.

United States Department of the Interior
National Park Service

NATIONAL REGISTER OF HISTORIC PLACES
CONTINUATION SHEET

Section number 8 Page 3

WATERS AND ELSA BURROWS HISTORIC DISTRICT
OSPREY, SARASOTA COUNTY
SIGNIFICANCE

advocates class democracy and government based upon quinary¹⁹ civic class representation."²⁰ The Commonwealth was published monthly between 1935 to 1941 and quarterly from 1942 to 1960.

The Burrowses commercial activities that contributed to the development of the local area date from their time spent at the property, encompassing the years from 1929 to 1953. During this era of the Great Depression, World War II and the post-war period, the couple made important contributions to Sarasota County in the area of commerce, and in their philanthropic works. In her will, Elsa Burrows left the family's 460-acre South Creek Ranch to the state of Florida, in memory of her father, with the intention of creating a park. This gift led to the creation of the Oscar Scherer State Park, located at 1483 South Tamiami Trail between Sarasota and Venice, which was opened to the public in 1959.²¹

The Burrowses sold the property and buildings in 1953 to Glen and Betty Valentine. The Burrows moved to Bradenton and lived in the Harbor Apartments until their deaths, Elsa's in 1955 and Waters' in 1966. The Valentines added the second floor apartment above the Burrows garage. The property passed to Stewart Seaman in 1957, and in 1985, his heirs sold the property to Richard and Cornelia Matson.²² In 1994, the Matsons obtained the property containing the pre-1920s Bamboo Cottage originally owned by Marie J. and John Bird.²³ Their son and his family moved into the property in the 1960s.²⁴ In 2006, the Sarasota Conservation Foundation (now called the Conservation Foundation of the Gulf Coast) acquired the property and has worked to preserve the bungalow and the historic buildings and structures on the site.

ARCHITECTURAL CONTEXT

Georgian Revival Style

Georgian Revival is sometimes referred to as "Colonial Revival" (1870-1920). Early examples of Colonial Revival were rarely historically correct copies but were, instead, free interpretations with details inspired by colonial precedents. During the first decade of this century, Colonial Revival fashion shifted toward carefully researched copies with more correct proportions and details. This was encouraged by new methods of printing that permitted wide dissemination of photographs in books and periodicals. In 1898 The American Architect and Building News began an extensive series called "The Georgian Period: Being photographs and measured drawings of Colonial Work with text." This was joined in 1915 by the White Pine Series of Architectural

¹⁹ That branch of the economy that includes the highest levels of decision making in such fields as government, science, universities, nonprofit, healthcare, culture, and the media.

²⁰ Sarasota Herald, August 25, 1936.

²¹ Shank, Ann A. "Burrow's Legacy included Oscar Scherer State Park." The Sarasota Tribune, June 3, 1998.

²² Panamerican Consultants, Inc., p.31.

²³ Panamerican Consultants, Inc., p.51.

²⁴ Robin Roberts, interview with David Byrd grandson of Marie and John Bird, April 24, 2009.

United States Department of the Interior
National Park Service

NATIONAL REGISTER OF HISTORIC PLACES
CONTINUATION SHEET

Section number 8 Page 3

WATERS AND ELSA BURROWS HISTORIC DISTRICT
OSPREY, SARASOTA COUNTY
SIGNIFICANCE

issues at local gatherings.¹⁸ The Sarasota Herald called the publication "the newspaper of democracy, which advocates class democracy and government based upon quinary¹⁹ civic class representation."²⁰ The Commonwealth was published monthly between 1935 to 1941 and quarterly from 1942 to 1960.

The Burrowses commercial activities that contributed to the development of the local area date from their time spent at the property, encompassing the years from 1929 to 1953. During this era of the Great Depression, World War II and the post-war period, the couple made important contributions to Sarasota County in the area of commerce, and in their philanthropic works. In her will, Elsa Burrows left the family's 460-acre South Creek Ranch to the state of Florida, in memory of her father, with the intention of creating a park. This gift led to the creation of the Oscar Scherer State Park, located at 1483 South Tamiami Trail between Sarasota and Venice, which was opened to the public in 1959.²¹

The Burrowses sold the property and buildings in 1953 to Glen and Betty Valentine. The Burrows moved to Bradenton and lived in the Harbor Apartments until their deaths, Elsa's in 1955 and Waters' in 1966. The Valentines added the second floor apartment above the Burrows garage. The property passed to Stewart Seaman in 1957, and in 1985, his heirs sold the property to Richard and Cornelia Matson.²² In 1994, the Matsons obtained the property containing the pre-1920s Bamboo Cottage originally owned by Marie J. and John Bird.²³ Their son and his family moved into the property in the 1960s.²⁴ In 2006, the Sarasota Conservation Foundation (now called the Conservation Foundation of the Gulf Coast) acquired the property and has worked to preserve the bungalow and the historic buildings and structures on the site.

ARCHITECTURAL CONTEXT

Georgian Revival Style

Georgian Revival is sometimes referred to as "Colonial Revival" (1870-1920). Early examples of Colonial Revival were rarely historically correct copies but were, instead, free interpretations with details inspired by colonial precedents. During the first decade of this century, Colonial Revival fashion shifted toward carefully researched copies with more correct proportions and details. This was encouraged by new methods of printing that permitted wide dissemination of photographs in books and periodicals. In 1898 The American Architect

¹⁸ Panamerican Consultants, Inc., p.30-1.

¹⁹ That branch of the economy that includes the highest levels of decision making in such fields as government, science, universities, nonprofit, healthcare, culture, and the media.

²⁰ Sarasota Herald, August 25, 1936.

²¹ Shank, Ann A. "Burrow's Legacy included Oscar Scherer State Park." The Sarasota Tribune, June 3, 1998.

²² Panamerican Consultants, Inc., p.31.

²³ Panamerican Consultants, Inc., p.51.

²⁴ Robin Roberts, interview with David Byrd grandson of Marie and John Bird, April 24, 2009.

United States Department of the Interior
National Park Service

**NATIONAL REGISTER OF HISTORIC PLACES
CONTINUATION SHEET**

Section number 8 Page 4

WATERS AND ELSA BURROWS HISTORIC DISTRICT
OSPREY, SARASOTA COUNTY
SIGNIFICANCE

and Building News began an extensive series called "The Georgian Period: Being photographs and measured drawings of Colonial Work with text." This was joined in 1915 by the White Pine Series of Architectural Monographs, which was dominated by photographs of colonial buildings. These and similar ventures led to a wide understanding of the prototypes on which the Revival was based. Colonial Revival houses built in the years between 1915 and 1935 reflect these influences by more closely resembling early prototypes than did those built earlier or later. The overall features of Georgian Revival may be described as symmetrical composition enriched with classical detail.

Identifying features:

Paneled front door, usually centered and capped by an elaborate decorative crown (entablature) supported by decorative pilasters (flattened columns). The main door is the principal ornamental feature of the Georgian facade;

Usually with a row of small rectangular panes of glass beneath the crown, either within the door or in a transom just above;

Cornice usually emphasized by decorative moldings, most commonly with tooth-like dentils;

Windows with double-hung sashes having many small panes (most commonly nine or twelve panes per sash) separated by thick wooden muntins;

Windows aligned horizontally and vertically in symmetrical rows, never in adjacent pairs, usually five-ranked on front facade, less commonly three- or seven-ranked.

Typical roofs are side-gabled, gambrel, or hipped.

Interiors:

Floor plan: approximately square shape. The four rooms on the main floor -- two front and two back -- are of about equal size and flank a central stair hall that extends throughout the depth of the house.

ARCHITECTURAL SIGNIFICANCE

The Burrows Residence retains its historic integrity and is eligible for listing under Criterion C for Architecture, meeting the criterion of the embodiment of distinctive characteristics of a type, period or method of construction. This building features distinctive Georgian Revival characteristics, including hip form slate roofs, red brick masonry exterior walls laid in a common bond with 6th course Flemish headers, a monumentally scaled entrance portico with four Doric order columns, surmounted by a simple entablature and modillions

**United States Department of the Interior
National Park Service**

NATIONAL REGISTER OF HISTORIC PLACES CONTINUATION SHEET

Section number 8 Page 5

WATERS AND ELSA BURROWS HISTORIC DISTRICT
OSPREY, SARASOTA COUNTY
SIGNIFICANCE

supporting the elaborate cast cornice ornament with dentils, a fanlight and sidelights at the entrance door. The steel framed casement windows reflect an adaptation to the mild Florida climate. The interior spaces and plan layout have been well-preserved. Recent minor interventions to the interior, to improve the safety and accessibility of the building, have been sensitively integrated to preserve the interior character defining features.

United States Department of the Interior
National Park Service

**NATIONAL REGISTER OF HISTORIC PLACES
CONTINUATION SHEET**

Section number 9 Page 1

WATERS AND ELSA BURROWS HISTORIC DISTRICT
OSPREY, SARASOTA COUNTY
MAJOR BIBLIOGRAPHICAL REFERENCES

BIBLIOGRAPHY

"Archaeological and Historical Survey of the Bay Preserve at Osprey property in Sarasota County, Florida," prepared by Panamerican Consultants, Inc., Tampa, FL, September 2006. (On file at Sarasota County History Center Archives).

Bird Deed Exhibit "A" Jack Bird et. al. to J. Richard & Cornelia L. Matson, conveyance of property at Osprey, March 1, 1994. (On file at Conservation Foundation of the Gulf Coast offices).

Boundary Survey, prepared by Red Stake Surveyors, dated 3/14/2006, legal description as furnished from the title policy.

Florida Site Files, forms dated 7/13/06, prepared by Panamerican Consultants, Inc. Tampa, FL.

<u>FSF Number</u>	<u>Name</u>	<u>Address</u>
8SO6259	Burrows Estate Resource Group	Lot 4, Section 3, Township 38S, Range 18E
8SO1945	Burrows Bungalow 1	343 Palmetto Avenue, Osprey, FL
8SO1946	Burrows Bungalow 2	369 Palmetto Avenue, Osprey, FL
8SO1947	Burrows Residence	400 Palmetto Avenue, Osprey, FL
8SO6263	Burrows Garage	400 Palmetto Avenue, Osprey, FL
8SO6264	Burrows Boathouse	400 Palmetto Avenue, Osprey, FL
8SO6265	Burrows seawall	400 Palmetto Avenue, Osprey, FL
8SO6260	Bamboo Cottage	331 Palmetto Avenue, Osprey, FL

Interview with David Byrd, former resident of Bamboo Cottage, by Robin Roberts, September 24, 2009.

Matthews, Jan Snyder. Edge of Wildernes: A Settlement History of Manatee River and Sarasota bay 1528-1885. Sarasota, FL: Coastal Press, 1983.

Matthews, Janet Snyder. Venice: Journey from Horse and Chaise. Sarasota, FL.: Pine Level Press, Inc., 1989.

Sarasota County Historic Designation Application Form and Report, prepared by Sarasota County Division of Historical Resources, Bay Preserve at Osprey, 2006. (On file at Sarasota County History Center Archives).

Shank, Ann A. "Burrow's Legacy included Oscar Scherer State Park." The Sarasota Tribune, June 3, 1998.

**United States Department of the Interior
National Park Service**

**NATIONAL REGISTER OF HISTORIC PLACES
CONTINUATION SHEET**

Section number 9 Page 2

WATERS AND ELSA BURROWS HISTORIC DISTRICT
OSPREY, SARASOTA COUNTY
MAJOR BIBLIOGRAPHICAL REFERENCES

Stevenson Architects Inc. "Preservation Plan for Burrows-Matson Historic District at Bay Preserve",
Bradenton, FL, June 2008.

10. Geographical Data

Acreage of Property 4.2 apprx

UTM References

(Place additional references on a continuation sheet.)

1	1 7	3 5 1 8 6 0	3 0 0 9 4 8 0
	Zone	Easting	Northing
2			

3			
	Zone	Easting	Northing
4			

See continuation sheet

Verbal Boundary Description

(Describe the boundaries of the property on a continuation sheet.)

Boundary Justification

(Explain why the boundaries were selected on a continuation sheet.)

11. Form Prepared By

name/title Linda D. Stevenson, Consultant/Carl Shiver, Historic Preservationist

organization Bureau of Historic Preservation date December 2011

street & number 500 South Bronough Street telephone (850) 245-6333

city or town Tallahassee state Florida zip code 32399-0250

Additional Documentation

Submit the following items with the completed form:

Continuation Sheets

Maps

A USGS map (7.5 or 15 minute series) indicating the property's location.

A Sketch map for historic districts and properties having large acreage or numerous resources.

Photographs

Representative black and white photographs of the property.

Additional items

(check with the SHPO or FPO for any additional items)

Property Owner

(Complete this item at the request of SHPO or FPO.)

name Conservation Foundation of the Gulf Coast

street & number Post Office Box 902 telephone (941) 918-2100

city or town Osprey state Florida zip code 34229

Paperwork Reduction Act Statement: This information is being collected for applications to the National Register of Historic Places to nominate properties for listing or determine eligibility for listing, to list properties, and amend listings. Response to this request is required to obtain a benefit in accordance with the National Historic Preservation Act, as amended (16 U.S.C. 470 et seq.).

Estimated Burden Statement: Public reporting burden for this form is estimated to average 18.1 hours per response including time for reviewing instructions, gathering and maintaining data, and completing and reviewing the form. Direct comments regarding this burden estimate or any aspect of this form to the Chief, Administrative Services Division, National Park Service, P.O. Box 37127, Washington, DC 20013-7127, and the Office of Management and Budget, Paperwork Reduction Projects (1024-0018), Washington, DC 20503.

**United States Department of the Interior
National Park Service**

**NATIONAL REGISTER OF HISTORIC PLACES
CONTINUATION SHEET**

Section number 10 Page 1

WATERS AND ELSA BURROWS HISTORIC DISTRICT
OSPREY, SARASOTA COUNTY
GEOGRAPHICAL DATA

Verbal Boundary Description

The property consists of Tract "B", as shown on Palmer Trust's Addition to Osprey, a non-conforming "unrecorded" plat, recorded 4/16/1920 in Deed Book 61, Pages 188-189, Public Records of Manatee County, Florida. TOGETHER with all land, if any, lying between said Tract "B" and the waters of Little Sarasota Bay, including "lands of Bowles" and part of vacated old Palmetto Avenue, as shown on said plat of Palmer Trust's Addition to Osprey. LESS any part of the above described Tract "B", if any, lying within the land described in O.R. Book 2719, Page 1987, Public Records of Sarasota County, Florida. Lying and being in the S.W.1/4 of Section 3, Township 38 South, Range 18 East, Sarasota County, Florida.

Boundary Justification

The above described boundaries encompass all of the buildings and structures constructed and obtained by Waters and Elsa Burrows during the period of their residence between 1931 and 1953. The noncontributing Bamboo Cottage, built in 1910, was acquired along with the Burrows era resources by the Conservation Foundation of the Gulf Coast in 2006. It is included within the boundaries of the district because of its historical association with the two contributing wood frame residences that were used by the Burrows as guest houses and its proximity to the other resources.

United States Department of the Interior
National Park Service

**NATIONAL REGISTER OF HISTORIC PLACES
CONTINUATION SHEET**

Section number _____ Page 2

WATERS AND ELSA BURROWS HISTORIC DISTRICT
OSPREY, SARASOTA COUNTY
LIST OF PHOTOGRAPHS

LIST OF PHOTOGRAPHS

1. Waters and Elsa Burrows Historic District
2. 353 Palmetto Drive, Osprey (Sarasota County), Florida
3. Marjorie Floyd
4. November 2010
5. Conservation Foundation of the Gulf Coast
6. Palmetto Avenue, Looking North
7. Photo 1 of 67

Numbers 1-5 are the same unless otherwise noted.

6. Palmetto Avenue, Looking Northwest
7. Photo 2 of 67

6. Palmetto Avenue, Looking Southwest
7. Photo 3 of 67

2. Burrows Residence, 400 Palmetto Avenue
6. Main (Northeast) Facade, Looking Southwest
7. Photo 4 of 67

2. Burrows Residence, 400 Palmetto Avenue
6. Main (Northeast) Facade, Looking Southwest
7. Photo 5 of 67

2. Burrows Residence, 400 Palmetto Avenue
6. Main (Northeast) Facade, Looking Southwest
7. Photo 6 of 67

2. Burrows Residence, 400 Palmetto Avenue
6. Main (Northeast) Facade, Looking Southwest
7. Photo 7 of 67

2. Burrows Residence, 400 Palmetto Avenue
6. Main (Northeast) Facade, Looking Southwest
7. Photo 8 of 67

**United States Department of the Interior
National Park Service**

**NATIONAL REGISTER OF HISTORIC PLACES
CONTINUATION SHEET**

Section number _____ Page 3

WATERS AND ELSA BURROWS HISTORIC DISTRICT
OSPREY, SARASOTA COUNTY
LIST OF PHOTOGRAPHS

- 2. Burrows Residence, 400 Palmetto Avenue
- 6. Southeast Elevation, Looking Northwest
- 7. Photo 9 of 67

- 2. Burrows Residence, 400 Palmetto Avenue
- 6. Southeast Elevation, Looking Northwest
- 7. Photo 10 of 67

- 2. Burrows Residence, 400 Palmetto Avenue
- 6. Southeast Elevation, Looking West
- 7. Photo 11 of 67

- 2. Burrows Residence, 400 Palmetto Avenue
- 6. Northwest Elevation, Looking South
- 7. Photo 12 of 67

- 2. Burrows Residence, 400 Palmetto Avenue
- 6. Southwest Facade and Southeast Elevation, Looking North
- 7. Photo 13 of 67

- 2. Burrows Residence, 400 Palmetto Avenue
- 6. Southwest Facade, Looking Northeast
- 7. Photo 14 of 67

- 2. Burrows Residence, 400 Palmetto Avenue
- 6. Southwest Facade, Looking North
- 7. Photo 15 of 67

- 2. Burrows Residence, 400 Palmetto Avenue
- 3. Harold R. Smith
- 4. c. 1950s
- 6. Interior, First Floor Foyer, Looking East
- 7. Photo 16 of 67

**United States Department of the Interior
National Park Service**

**NATIONAL REGISTER OF HISTORIC PLACES
CONTINUATION SHEET**

Section number _____ Page 4

WATERS AND ELSA BURROWS HISTORIC DISTRICT
OSPREY, SARASOTA COUNTY
LIST OF PHOTOGRAPHS

2. Burrows Residence, 400 Palmetto Avenue
 3. Marjorie Floyd
 4. November 2010
 6. Interior, First Floor Foyer, Looking East
 7. Photo 17 of 67
-
2. Burrows Residence, 400 Palmetto Avenue
 6. Interior, First Floor, Stairs Detail, Looking North
 7. Photo 18 of 67
-
2. Burrows Residence, 400 Palmetto Avenue
 6. Interior, First Floor, Detail, Door Pediment, Looking North
 7. Photo 19 of 67
-
2. Burrows Residence, 400 Palmetto Avenue
 3. Harold R. Smith
 4. c. 1950s
 6. Interior, First Floor, Reception Room, Looking Southwest
 7. Photo 20 of 67
-
2. Burrows Residence, 400 Palmetto Avenue
 3. Marjorie Floyd
 4. November 2010
 6. Interior, First Floor, Fireplace, Looking Southwest
 7. Photo 21 of 77
-
2. Burrows Residence, 400 Palmetto Avenue
 3. Harold R. Smith
 4. c. 1950s
 6. Interior, First Floor, Drawing Room, Looking West
 7. Photo 22 of 67
-
2. Burrows Residence, 400 Palmetto Avenue
 3. Marjorie Floyd
 4. November 2010
 6. Interior, First Floor, Drawing Room, Looking North
 7. Photo 23 of 67

**United States Department of the Interior
National Park Service**

**NATIONAL REGISTER OF HISTORIC PLACES
CONTINUATION SHEET**

Section number _____ Page 5

WATERS AND ELSA BURROWS HISTORIC DISTRICT
OSPREY, SARASOTA COUNTY
LIST OF PHOTOGRAPHS

- 2. Burrows Residence, 400 Palmetto Avenue
- 6. Veranda, First Floor, Looking Southwest
- 7. Photo 24 of 67

- 2. Burrows Residence, 400 Palmetto Avenue
- 3. Harold R. Smith
- 4. c. 1950s
- 6. Interior, 2nd Floor Sitting Room, Looking Northwest
- 7. Photo 25 of 67

- 2. Burrows Residence, 400 Palmetto Avenue
- 3. Robin Roberts
- 4. March 2010
- 6. Interior, 2nd Floor Sitting Room, Looking Northwest
- 7. Photo 26 of 67

- 2. Burrows Residence, 400 Palmetto Avenue
- 3. Harold R. Smith
- 4. c. 1950s
- 6. Interior, 2nd Floor Bedroom, Looking North
- 7. Photo 27 of 67

- 2. Burrows Residence, 400 Palmetto Avenue
- 6. Interior, First Floor, Kitchen, Looking Southwest
- 7. Photo 28 of 67

- 2. Boathouse and Dock
- 3. Harold R. Smith
- 4. c. 1950s
- 6. Looking Southwest
- 7. Photo 29 of 67

- 2. Boathouse and Dock, 400 Palmetto Avenue
- 6. Looking Southwest
- 7. Photo 30 of 67

**United States Department of the Interior
National Park Service**

**NATIONAL REGISTER OF HISTORIC PLACES
CONTINUATION SHEET**

Section number _____ Page 6

WATERS AND ELSA BURROWS HISTORIC DISTRICT
OSPREY, SARASOTA COUNTY
LIST OF PHOTOGRAPHS

- 2. Boathouse, 400 Palmetto Avenue
- 6. View of Deck and Interior, Looking Southwest
- 7. Photo 31 of 67

- 2. Boathouse, 400 Palmetto Avenue
- 6. Observation Deck, Looking Northeast
- 7. Photo 32 of 67

- 2. Seawall, 400 Palmetto Avenue
- 6. Looking Northwest
- 7. Photo 33 of 67

- 2. Bungalow 1, 343 Palmetto Avenue
- 3. Harold R. Smith
- 4. c. 1950s
- 6. Main (Northeast) Facade, Looking Southwest
- 7. Photo 34 of 67

- 2. Bungalow 1, 343 Palmetto Drive
- 3. Marjorie Floyd
- 4. November 2010
- 6. Main (Northeast) Facade, Looking Southwest
- 7. Photo 35 of 67

- 2. Bungalow 1, 343 Palmetto Avenue
- 6. Northwest Elevation, Southeast
- 7. Photo 36 of 67

- 2. Bungalow 1, 343 Palmetto Avenue
- 6. Southwest Elevation, Looking Northeast
- 7. Photo 37 of 67

- 2. Bungalow 1, 343 Palmetto Avenue
- 6. Southwest Elevation, Looking Northeast
- 7. Photo 38 of 67

**United States Department of the Interior
National Park Service**

**NATIONAL REGISTER OF HISTORIC PLACES
CONTINUATION SHEET**

Section number _____ Page 7

WATERS AND ELSA BURROWS HISTORIC DISTRICT
OSPREY, SARASOTA COUNTY
LIST OF PHOTOGRAPHS

2. Bungalow 1, 343 Palmetto Avenue
6. Interior, Living Room, Looking Northwest
7. Photo 39 of 67

2. Bungalow 1, 343 Palmetto Avenue
6. Interior, Family Room, Looking Northeast
7. Photo 40 of 67

2. Bungalow 1, 343 Palmetto Avenue
6. Interior, Kitchen, Looking West
7. Photo 41 of 67

2. Bungalow 1, 343 Palmetto Avenue
6. Interior, Bedroom, Looking East
7. Photo 42 of 67

2. Bungalow 1, 343 Palmetto Avenue
6. Garage, Northwest and Northwest Elevations, Looking Southwest
7. Photo 43 of 67

2. Bungalow 2, 369 Palmetto Avenue
3. Harold R. Smith
4. c. 1950s
6. Northeast Elevation, Looking Southwest
7. Photo 44 of 67

2. Bungalow 2, 369 Palmetto Avenue
3. Robin Roberts
4. November 2010
6. East Elevation, Looking Southwest
7. Photo 45 of 67

2. Bungalow 2, 369 Palmetto Avenue
6. Northeast Elevation, Looking West
7. Photo 46 of 67

**United States Department of the Interior
National Park Service**

**NATIONAL REGISTER OF HISTORIC PLACES
CONTINUATION SHEET**

Section number _____ Page 8

WATERS AND ELSA BURROWS HISTORIC DISTRICT
OSPREY, SARASOTA COUNTY
LIST OF PHOTOGRAPHS

- 2. Bungalow 2, 369 Palmetto Avenue
- 6. Main (Southeast) Facade, Looking Northwest
- 7. Photo 47 of 67

- 2. Bungalow 2, 369 Palmetto Avenue
- 3. Marjorie Floyd
- 4. November 2010
- 6. Main (Southeast) Facade and Southwest Elevation, Looking Northeast
- 7. Photo 48 of 67

- 2. Bungalow 2
- 6. Interior, Living Room, Looking Southeast
- 7. Photo 49 of 67

- 2. Bungalow 2, 369 Palmetto Avenue
- 3. Marjorie Floyd
- 4. November 2010
- 6. Carport, Looking Northeast
- 7. Photo 50 of 67

- 2. Burrows Garage, 400 Palmetto Avenue
- 3. Harold R. Smith
- 4. c. 1950
- 6. Northeast Elevation, Looking Southwest
- 7. Photo 51 of 67

- 2. Garage Apartment, 400 Palmetto Avenue
- 3. Marjorie Floyd
- 4. November 2010
- 6. Northeast Elevation, Looking Southwest
- 7. Photo 52 of 67

- 2. Garage Apartment, 400 Palmetto Avenue
- 6. Northwest Elevation and Southeast Facade, Looking Southwest
- 7. Photo 53 of 67

**United States Department of the Interior
National Park Service**

**NATIONAL REGISTER OF HISTORIC PLACES
CONTINUATION SHEET**

Section number _____ Page 9

WATERS AND ELSA BURROWS HISTORIC DISTRICT
OSPREY, SARASOTA COUNTY
LIST OF PHOTOGRAPHS

2. Garage Apartment, 400 Palmetto Avenue
6. Southwest Elevation, Looking Northeast
7. Photo 54 of 67

2. Garage Apartment, 400 Palmetto Avenue
6. Interior, 1st Floor, Looking Northeast
7. Photo 55 of 67

2. Garage Apartment, 400 Palmetto Avenue
3. Robin Roberts
4. October 2011
6. Interior, 2nd Floor, Looking Southeast
7. Photo 56 of 67

2. Bamboo Cottage, 331 Palmetto Avenue
6. Northwest Elevation, Looking Southeast
7. Photo 57 of 67

1. Bamboo Cottage, 331 Palmetto Avenue
6. Southwest Facade, Looking Northeast
7. Photo 58 of 67

1. Bamboo Cottage, 331 Palmetto Avenue
6. Northeast and Northwest Elevations, Looking Southwest
7. Photo 59 of 67

1. Bamboo Cottage, 331 Palmetto Avenue
6. Front Porch, Looking Northeast
7. Photo 60 of 67

2. Bamboo Cottage, 331 Palmetto Avenue
6. Front Porch, Looking North
7. Photo 61 of 67

2. Bamboo Cottage, 331 Palmetto Avenue
6. Interior, Living Room, Looking North
7. Photo 62 of 67

**United States Department of the Interior
National Park Service**

**NATIONAL REGISTER OF HISTORIC PLACES
CONTINUATION SHEET**

Section number _____ Page 10

WATERS AND ELSA BURROWS HISTORIC DISTRICT
OSPREY, SARASOTA COUNTY
LIST OF PHOTOGRAPHS

2. Bamboo Cottage, 331 Palmetto Avenue
6. Interior, Living Room, Looking Northwest
7. Photo 63 of 67

2. Bamboo Cottage, 331 Palmetto Avenue
6. Storage Shed, Looking Southwest
7. Photo 64 of 67

2. Bamboo Cottage, 331 Palmetto Avenue
6. Storage Shed and Carport, Looking Southwest
7. Photo 65 of 67

2. Bamboo Cottage, 331 Palmetto Avenue
6. Storage Shed and Carport, Looking Northeast
7. Photo 66 of 67

2. Pool House, 400 Palmetto Avenue
6. Northwest Facade, Looking Southeast
7. Photo 67 of 67

UNITED STATES DEPARTMENT OF THE INTERIOR
NATIONAL PARK SERVICE

NATIONAL REGISTER OF HISTORIC PLACES
EVALUATION/RETURN SHEET

REQUESTED ACTION: NOMINATION

PROPERTY NAME: Burrows, Waters and Elsa, Historic District

MULTIPLE
NAME:

STATE & COUNTY: FLORIDA, Sarasota

DATE RECEIVED: 12/23/11 DATE OF PENDING LIST: 1/19/12
DATE OF 16TH DAY: 2/03/12 DATE OF 45TH DAY: 2/07/12
DATE OF WEEKLY LIST:

REFERENCE NUMBER: 11001077

REASONS FOR REVIEW:

APPEAL: N DATA PROBLEM: N LANDSCAPE: N LESS THAN 50 YEARS: N
OTHER: N PDIL: N PERIOD: N PROGRAM UNAPPROVED: N
REQUEST: N SAMPLE: N SLR DRAFT: N NATIONAL: N

COMMENT WAIVER: N

ACCEPT RETURN REJECT _____ DATE

ABSTRACT/SUMMARY COMMENTS:

RECOM./CRITERIA _____

REVIEWER _____ DISCIPLINE _____

TELEPHONE _____ DATE _____

DOCUMENTATION see attached comments Y/N see attached SLR Y/N

If a nomination is returned to the nominating authority, the nomination is no longer under consideration by the NPS.



WATERS AND ELSA BURROWS HISTORIC
DISTRICT

SARASOTA CO., FL

4/67



WATERS AND ELSA BURROWS HISTORIC
DISTRICT

SARASOTA CO., FL

2/67



WATERS AND ELSA BURROWS HISTORIC
DISTRICT

SARASOTA CO, FL

3/67



WATERS AND ELSA BURROWS HISTORIC
DISTRICT

SARASOTA CO, FL

4/67



WATERS AND EWING BURROWS HISTORIC
DISTRICT

SARASOTA CO., FL

5/67



WATERS AND ELSA BURROWS HISTORIC
DISTRICT

SARASOTA CO., FL

6/27



WATERS AND ELSA BURROWS

HISTORIC DISTRICT

SARASOTA CO, FL

7/67

400



WATERS AND ELSA BERRROWS HISTORIC
DISTRICT

SARASOTA CO, FL

8/67



WATERS AND ELSA BURROWS HISTORIC
DISTRICT

SARASOTA CO, FL

9/67



WATERS AND ELSA BURROWS HISTORIC

DISTRICT

SARASOTA CO, FL

10/67



WATERS AND ELSA BURROWS HISTORIC
DISTRICT

SARASOTA CO, FL

1967



WATERS AND ELSA BUREAUX HISTORIC

DISTRICT

SARASOTA CO., FL

12/67



WATERS AND ELSA-BURROWS HISTORIC
DISTRICT

SARASOTA CO, FL

13/67



WATERS AND ELSA BURROWS
HISTORIC DISTRICT
SARASOTA CO., FL

14/67



WATERS AND ELSA BURROWS HISTORIC
DISTRICT
SARASOTA CO, FL

15/27



WATERS AND ELSA BURROWS HISTORIC

DISTRICT

SARASOTA CO, FL

16/67



WATERS AND ELSA BARROWS HISTORIC
DISTRICT

SARASOTA Co, FL

17/67



WATERS AND ELSA BURROWS HISTORIC
DISTRICT

SARASOTA CO., FL

18/67



WATERS AND ELSA BURROWS HISTORIC
DISTRICT

SARASOTA CO, FL

19/67



WATERS AND ELSA BURROWS HISTORIC
DISTRICT

SARASOTA CO, FL

20/67



WATERS AND ELSA BURROWS HISTORIC
DISTRICT

SARASOTA CO., FL

2/1/67



© HAROLD R. SMITH

WATERS AND ELSA BURROWS HISTORIC
DISTRICT

SARASOTA CO, FL

22/67



WATERS AND ELSA BURROWS HISTORIC
DISTRICT

SARASOTA CO., FL

23/67



WATERS AND ELSA BURROWS HISTORIC
DISTRICT
SARASOTA CO, FL
24/67



WATERS AND ELSA BURROWS HISTORIC
DISTRICT

SARASOTA CO, FL

25/67



WATERS AND ELSA BURROWS HISTORIC
DISTRICT

SARASOTA CO., FL

26/67



WATERS AND ELSA BURROWS HISTORIC
DISTRICT

SARASOTA CO, FL

27/67



WATERS AND ELSA BURROWS HISTORIC
DISTRICT

SARASOTA CO, FL

28/67



WATERS AND ELSA BURROWS HISTORIC
DISTRICT

SARISOT A Co, FL

29/67



WATERS AND ELSA BURROWS HISTORICAL
DISTRICT

SARASOTA CO., FL

30/67

Honoré T. Wamsler
WILDLIFE OBSERVATION PLATFORM



WATERS AND ELSA BURROWS HISTORIC
DISTRICT

SARASOTA CO., FL

3/67



WATERS AND ELSA BURROWS HISTORIC
DISTRICT

SARASOTA CO., FL

3/2/67



WATERS AND ELSA BURROWS HISTORIC
DISTRICT

SARASOTA CO., FL

33/67



WATERS AND ELSA BURROWS HISTORIC
DISTRICT

SARASOTA CO., FL

34/67



Waterman Center for Youth Water Recreation

343

SALAMITA
REALTY
PROPERTIES FOR SALE

WATERS AND ELSA BURROUGHS HISTORIC
DISTRICT

SARASOTA Co., FL

35/67



WATERS AND ELSA BURROWS HISTORIC
DISTRICT

SARASOTA CO., FL

36/67



WATERS AND ELSA BURROWS HISTORY

DISTRICT

SARASOTA CO, FL

37/67



WATERS AND ELSA BARROWS HISTORIC
DISTRICT

SARASOTA CO. FL

38/67



WATERS AND ELSA BURROWS HISTORIC
DISTRICT

SARASOTA CO, FL

39/67



WATERS AND ELSA BURROWS
HISTORIC DISTRICT

SARASOTA CO., FL
40107



WATERS AND ELSA BURROWS HISTORY

DISTRICT

SARASOTA CO., FL

4/1/67



WATERS AND ELSA BURROWS HISTORICAL
DISTRICT

SARASOTA CO. FL

42/67



WATERS AND ELSA BURROWS HISTORIC

DISTRICT

SARASOTA CO., FL

43/67



HAROLD R. SMITH



WATERS AND ELSA BURROWS
HISTORIC DISTRICT

SARASOTA CO, FL

44/67



WATERS AND ELSA BURROWS

HISTORIC DISTRICT

SARASOTA CO, FL

45/67



WATERS AND ELSA BURROWS
HISTORIC DISTRICT
SARASOTA CO, FL
46/67



WATERS AND ELSA BURROWS

HISTORIC DISTRICT

SARASOTA CO., FL

47/67



WATERS AND ELSA BURROWS

HISTORIC DISTRICT

SARASOTA CO, FL

48/67



WATERS AND ELSA BURROWS

HISTORIC DISTRICT

SARASOTA CO, FL

49/67



WATERS AND ELSA BURROWS
HISTORIC DISTRICT
SARASOTA CO., FL

50/67



WATERS AND ELSA BURROWS

HISTORIC DISTRICT

SARASOTA Co, FL

5/67



WATERS AND ELZA BURROWS
HISTORIC DISTRICT
SARASOTA CO., FL
52/67



WATERS AND ELSA BURROWS
HISTORIC DISTRICT
SARASOTA CO, FL

53/67



WATERS AND ELSA BURROWS

HISTORIC DISTRICT

SARASOTA CO. FL

54/67



WATERS AND ELSA BURROWS
HISTORIC DISTRICT

SARASOTA CO, FL

55/67



WATERS AND ELSA BURROWS

HISTORIC DISTRICT

SARASOTA CO., FL

5/6/67



WATERS AND ELSA BURROWS
HISTORIC DISTRICT
SARASOTA CO. FL
57/67



WATERS AND ELSA BURROWS
HISTORIC DISTRICT

SARASOTA CO., FL

58/67



WATERS AND ELSA BURROWS
HISTORIC DISTRICT
SARA JOT CO, FL
59/67



WATERS AND ELSA BARROWS
HISTORIC DISTRICT

SARASOTA CO, FL

60/67



WATERS AND ELSA BURROWS
HISTORIC DISTRICT
SARASOTA CO, FL
6/1/67



WATERS AND ELSA BURROWS

HISTORIC DISTRICT

SARASOTA CO, FL

62/67



WATERS AND ELSA BURROWS

HISTORIC DISTRICT

SARASOT CO, FL

63/67



WATERS AND ELSA BURROWS
HISTORIC DISTRICT.

SARASOTA CO., FL

64/67



United
800-864-1177

WATERS AND ELISA BURROWS
HISTORIC DISTRICT
SARASOTA CO., FL
65/67



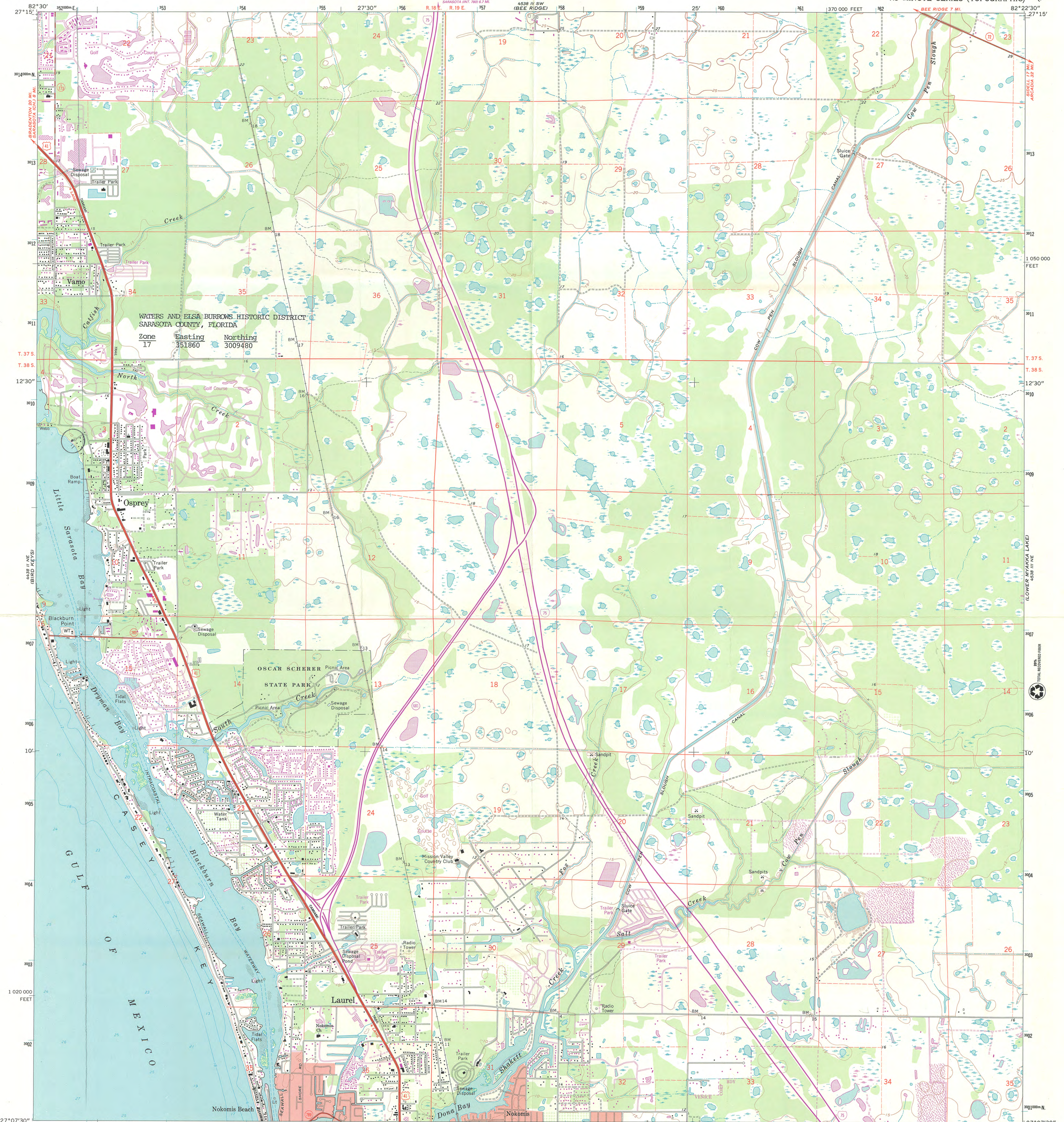
WALTERS AND ELISA BURROWS
HISTORIC DISTRICT

SARASOTA CO., FL

66/67



WATERS AND ELSA BURROWS
HISTORIC DISTRICT.
SARASOTA COY FL
67/67



WATERS AND ELSA BURROWS HISTORIC DISTRICT SARASOTA COUNTY, FLORIDA

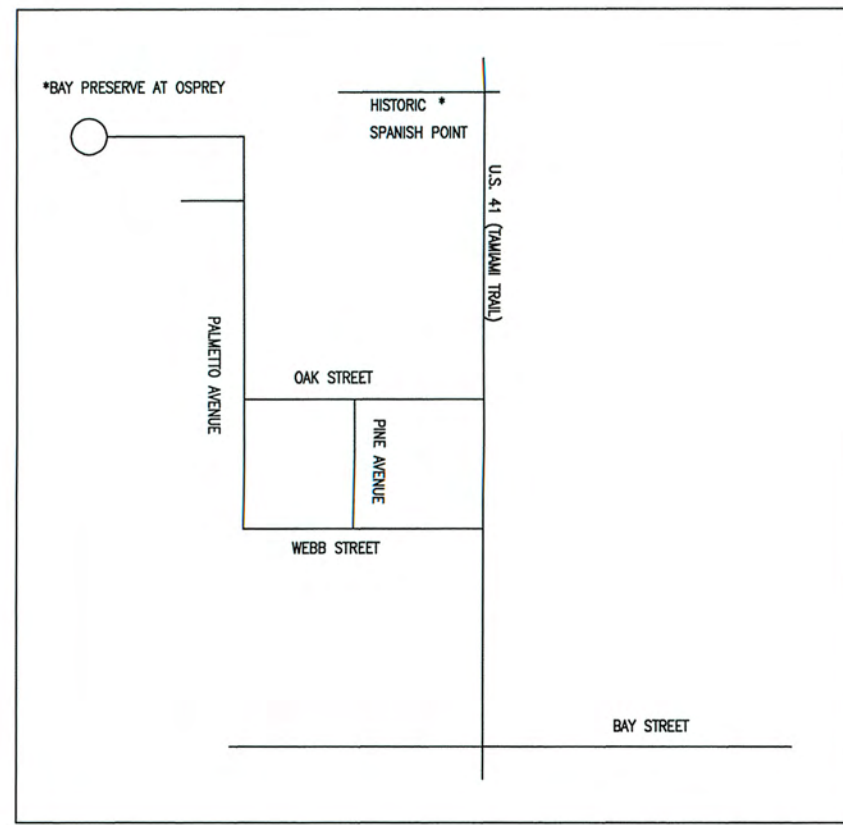
Zone 17 Easting 351860 Northing 3009480

Mapped, edited, and published by the Geological Survey Control by USGS, NOS/NOAA, and Florida Geodetic Survey Topography by photogrammetric methods from aerial photographs taken December 1971. Field checked 1973 Supersedes Army Map Service map dated 1943 Selected hydrographic data compiled from USC&GS Chart 857 SC (1973) This information is not intended for navigational purposes Projection and 10,000-foot grid ticks: Florida coordinate system, west zone (transverse Mercator) 1000 meter Universal Transverse Mercator grid ticks, zone 17, shown blue. 1927 North American Datum To place on the predicted North American Datum 1983 move the projection lines 32 meters south and 16 meters west as shown by dashed corner ticks Fine red dashed lines indicate selected fence and field lines where generally visible on aerial photographs. This information is unchecked

UTM GRID AND 1987 MAGNETIC NORTH DECLINATION AT CENTER OF SHEET Red tint indicates area in which only landmark buildings are shown There may be private inholdings within the boundaries of the National or State reservations shown on this map

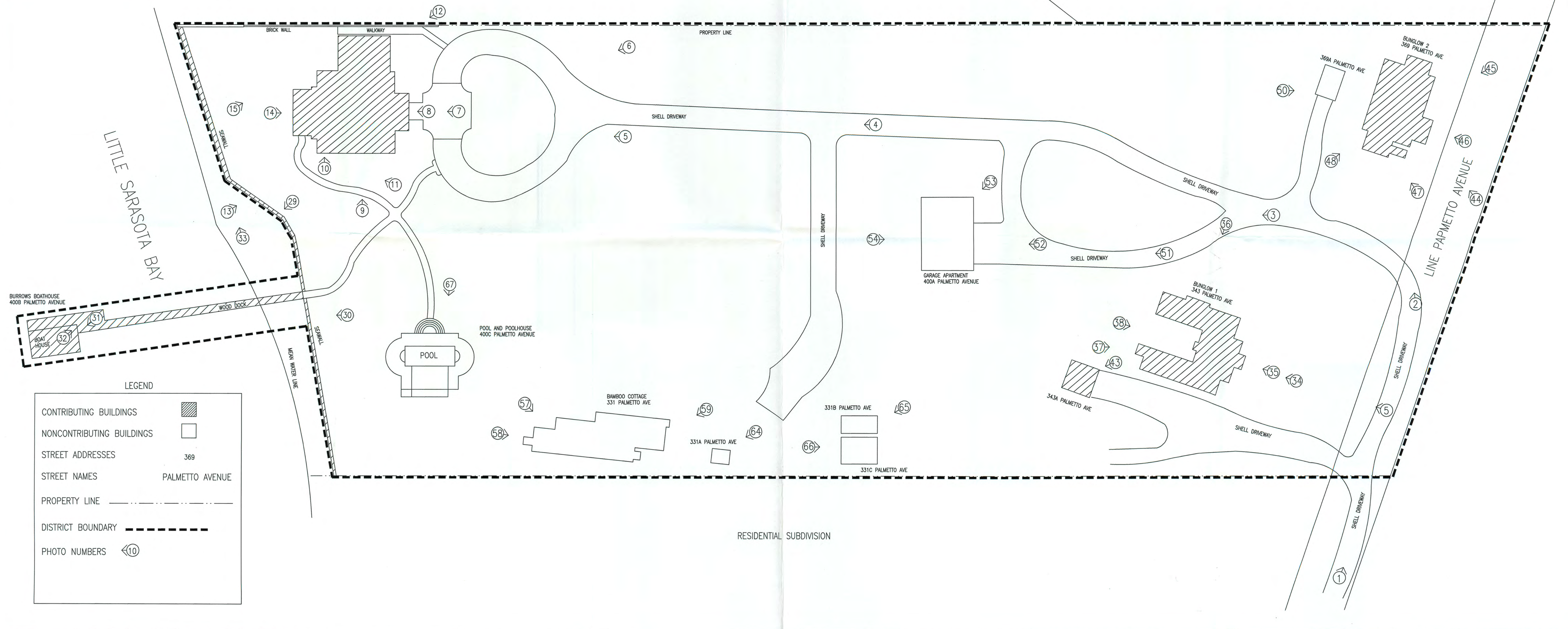
SCALE 1:24 000 CONTOUR INTERVAL 5 FEET NATIONAL GEODETIC VERTICAL DATUM OF 1929 DEPTH CURVES AND SOUNDINGS IN FEET-DATUM IS MEAN LOWER LOW WATER THE RELATIONSHIP BETWEEN THE TWO DATUMS IS VARIABLE SHORELINE SHOWN REPRESENTS THE APPROXIMATE LINE OF MEAN HIGH WATER THE MEAN RANGE OF TIDE IS APPROXIMATELY 2.1 FEET THIS MAP COMPLIES WITH NATIONAL MAP ACCURACY STANDARDS FOR SALE BY U.S. GEOLOGICAL SURVEY DENVER, COLORADO 80225 OR RESTON, VIRGINIA 22092 A FOLDER DESCRIBING TOPOGRAPHIC MAPS AND SYMBOLS IS AVAILABLE ON REQUEST

ROAD CLASSIFICATION Primary highway, hard surface. Light-duty road, hard or improved surface. Secondary highway, hard surface. Unimproved road. Interstate Route. U.S. Route. State Route. Revisions shown in purple and woodland compiled in cooperation with State of Florida agencies from aerial photographs taken 1984 and other sources. This information not field checked Map edited 1987. LAUREL, FLA. 27082-B4-TF-024 1973 PHOTOREVISED 1987 DMA 4538 III NW - SERIES V847



WOODED AREA

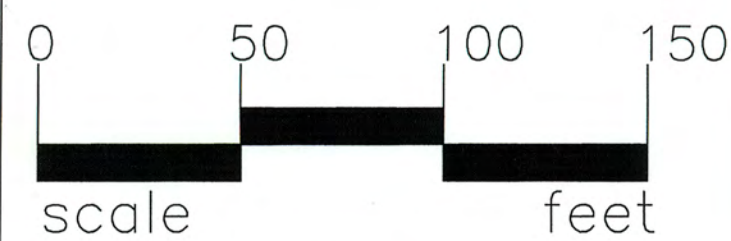
RESIDENTIAL SUBDIVISION



LEGEND

- CONTRIBUTING BUILDINGS
- NONCONTRIBUTING BUILDINGS
- STREET ADDRESSES 369
- STREET NAMES PALMETTO AVENUE
- PROPERTY LINE
- DISTRICT BOUNDARY
- PHOTO NUMBERS

WATERS AND ELSA BURROWS HISTORIC DISTRICT
 400 PALMETTO AVENUE
 OSPREY (SARASOTA COUNTY), FLORIDA



CONSERVATION FOUNDATION OF THE GULF COAST
 POST OFFICE BOX 902
 OSPREY, FLORIDA 34229-0902
 TEL (941) 918-2100 FAX (941) 918-2103
 www.conservaionfoundation.com

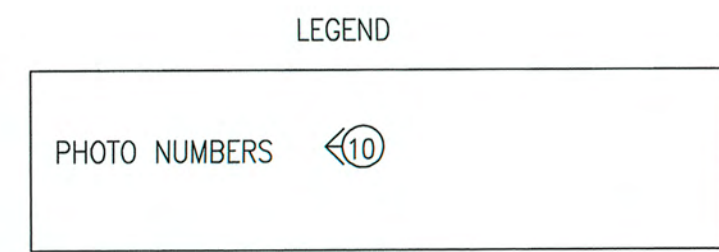
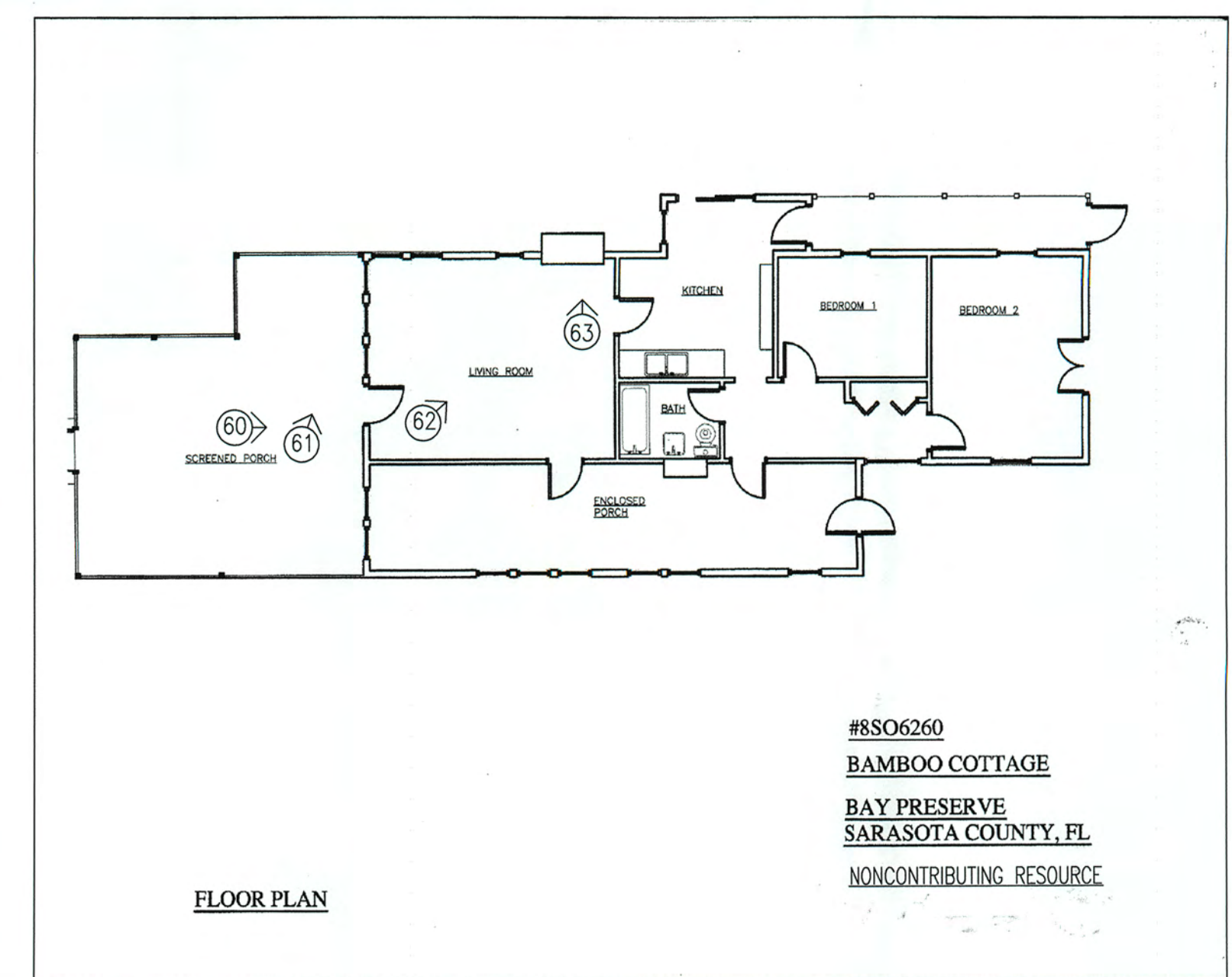
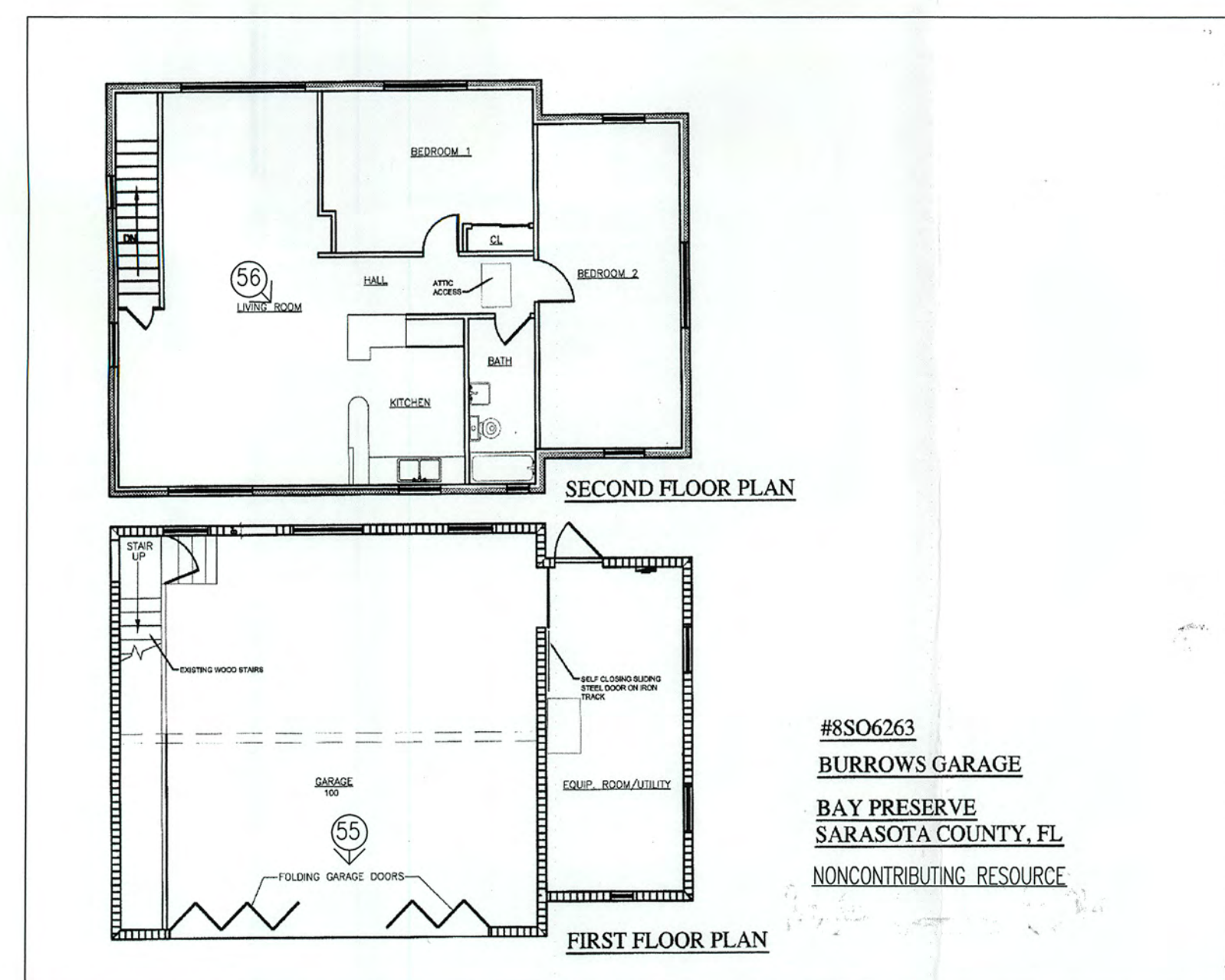
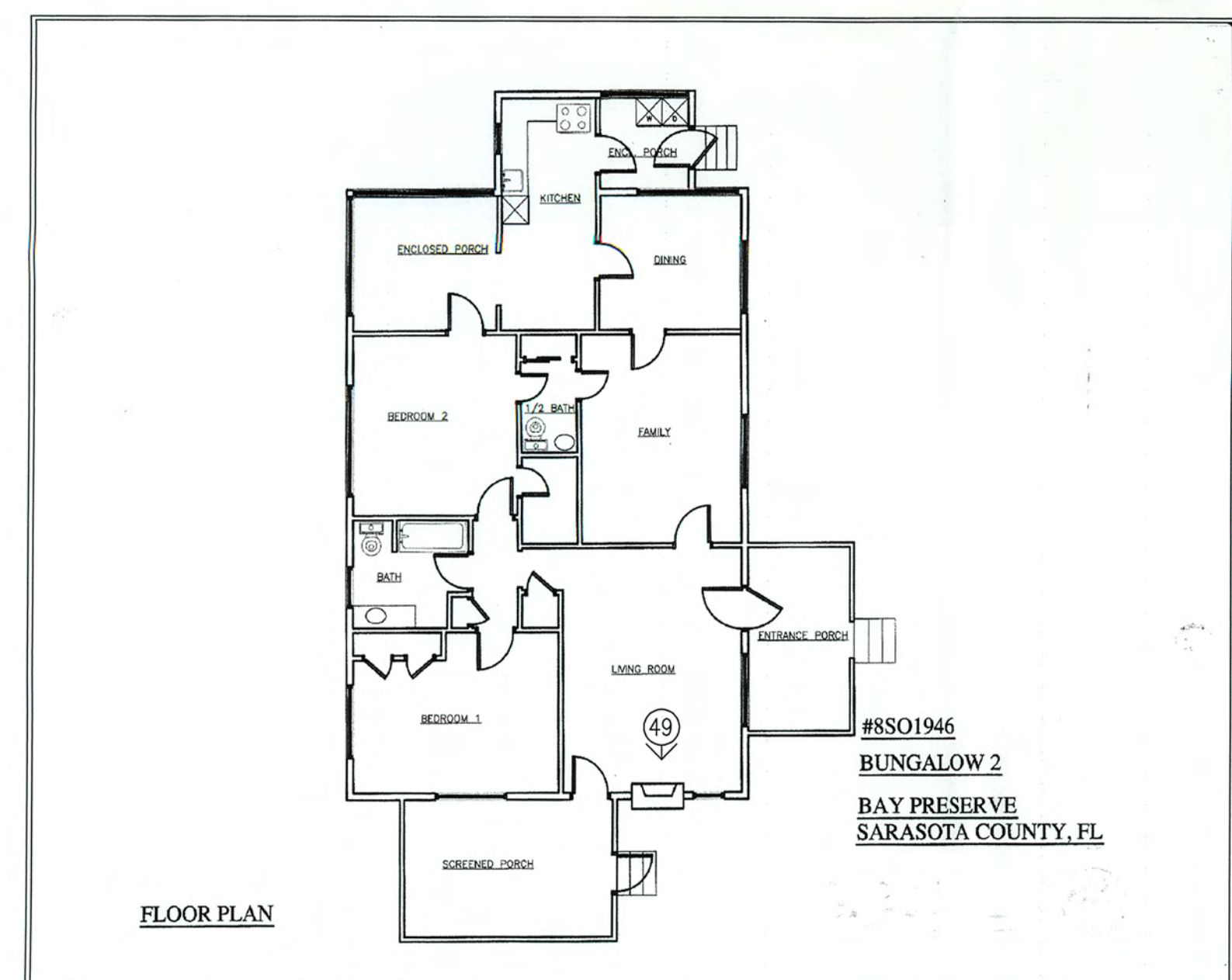
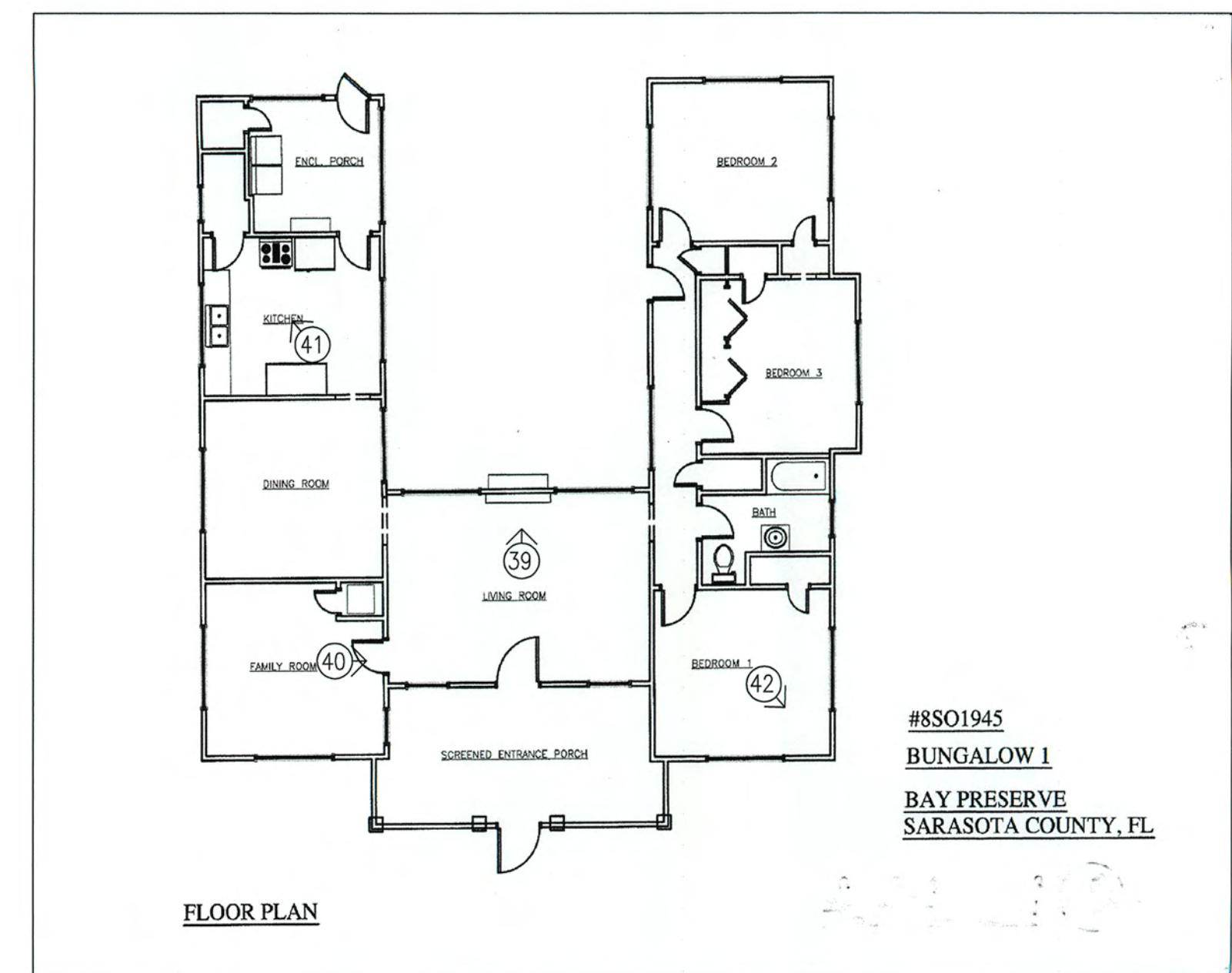
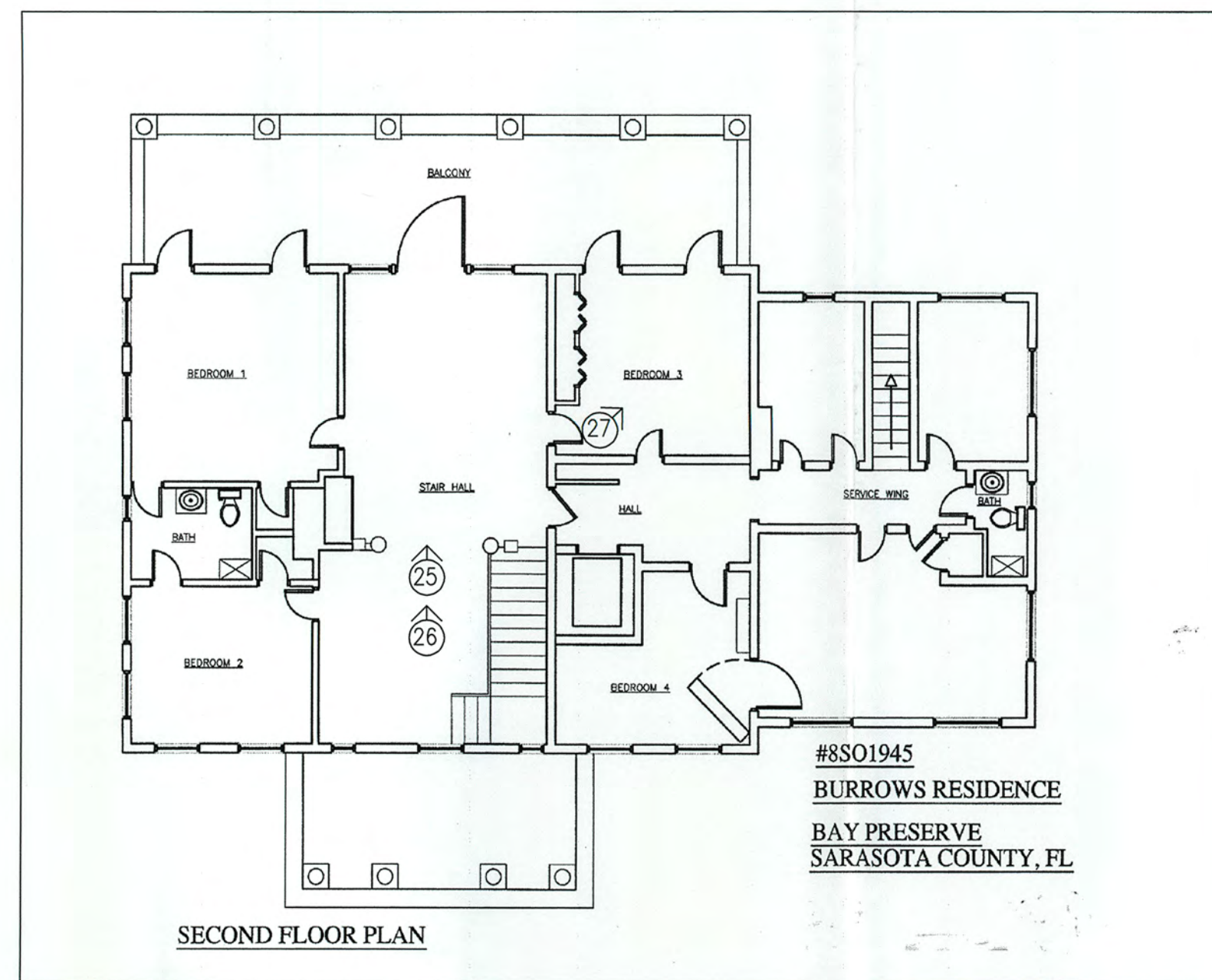
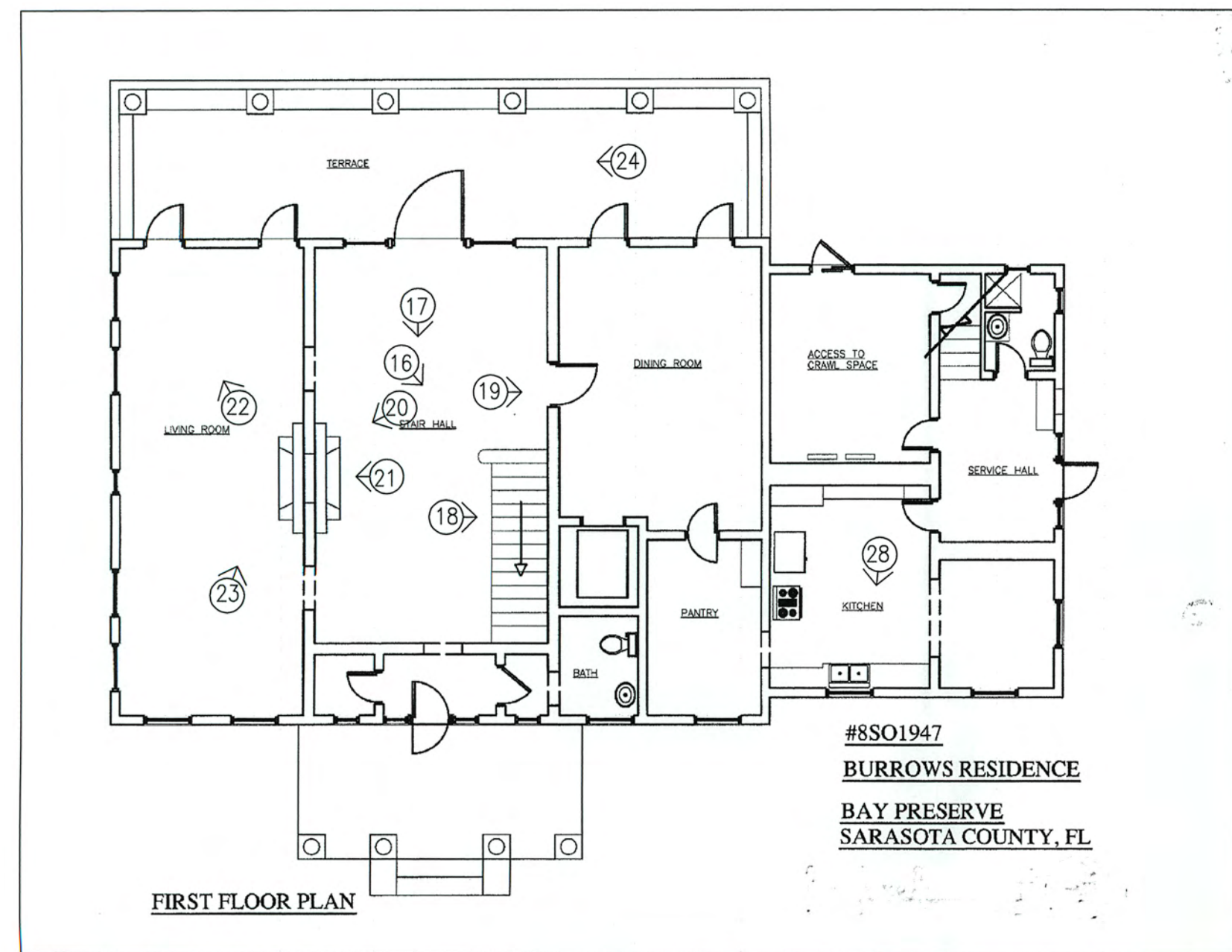
DRAWN BY: W. CARL SHIVER
 DRAWING DATE: APRIL-MAY 2011

THE WALTER AND ELSA BURROWS HISTORIC DISTRICT MAP WAS DRAWN USING MAINLY A SURVEY MAP DRAWN BY RED STAKE SURVEYORS DRAWN IN 2008 AND USING AERIAL AND CURRENT AERIAL AND HISTORIC PHOTOGRAPHS AND ON-SITE VIEWS. THE SITE AND FLOOR PLANS HAVE BEEN DRAWN TO APPROXIMATE SCALE BUT VARIATIONS WERE ALLOWED FOR THE PURPOSE OF CLARITY. THE MAP WAS PREPARED USING THE AUTOCAD COMPUTER DRAWING PROGRAM.

MAP REVIEWED BY: CARL SHIVER
 FLORIDA BUREAU OF HISTORIC PRESERVATION
 R.A. GRAY BUILDING
 500 SOUTH BRONOUGH STREET
 TALLAHASSEE, FLORIDA 32399-0250
 PHONE NUMBER (850) 245-6333
 TOLL FREE NUMBER 1-800-7278
 FAX NUMBER (850) 245-6437

DRAWING NUMBER N/A
 SHEET NO. 1 OF 2
 MAP REVISED: MAY 2011

ORIGINAL PLANS PROVIDED BY:
 ROBERT G. BRUCE, RED STAKE SURVEYORS
 7123 PROCTOR ROAD, SARASOT---FL---34241
 PHONE (941) 923-9997 FAX (941) 935-8684



WATERS AND ELSA BURROWS HISTORIC DISTRICT
 400 PALMETTO AVENUE
 OSPREY (SARASOTA COUNTY), FLORIDA

NOT TO SCALE

CONSERVATION FOUNDATION OF THE GULF COAST
 POST OFFICE BOX 902
 OSPREY, FLORIDA 34229-0902
 TEL (941) 918-2100 FAX (941) 918-2103
 www.conservationfoundation.com

DRAWN BY: W. CARL SHIVER
 DRAWING DATE: APRIL-MAY 2011

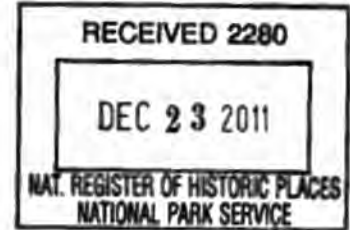
THE WALTER AND ELSA BURROWS HISTORIC DISTRICT MAP WAS DRAWN USING MAINLY A SURVEY MAP DRAWN BY RED STAKE SURVEYORS DRAWN IN 2008 AND USING AERIAL AND CURRENT AERIAL AND HISTORIC PHOTOGRAPHS AND ON-SITE VIEWS. THE SITE AND FLOOR PLANS HAVE BEEN DRAWN TO APPROXIMATE SCALE BUT VARIATIONS WERE ALLOWED FOR THE PURPOSE OF CLARITY. THE MAP WAS PREPARED USING THE AUTOCAD COMPUTER DRAWING PROGRAM.

MAP REVIEWED BY: CARL SHIVER
 FLORIDA BUREAU OF HISTORIC PRESERVATION
 R.A. GRAY BUILDING
 500 SOUTH BRONOUGH STREET
 TALLAHASSEE, FLORIDA 32399-0290
 PHONE NUMBER (850) 245-6333
 TOLL FREE NUMBER 1-800-7278
 FAX NUMBER (850) 245-6437

DRAWING NUMBER	SHEET NO. <u>2</u> OF <u>2</u>
N/A	MAP REVISED: MAY 2011
ORIGINAL PLANS PROVIDED BY:	
ROBERT G. BRUCE, RED STAKE SURVEYORS	
7123 PROCTOR ROAD, SARASOT---FL---34241	
PHONE (941) 923-9997 FAX (941) 935-8684	



FLORIDA DEPARTMENT OF STATE
Kurt S. Browning
Secretary of State
DIVISION OF HISTORICAL RESOURCES



December 12, 2011

Ms. Carol Shull, Keeper
National Register of Historic Places
Department of Interior
1201 Eye Street, N.W., 8th Floor
Washington, D.C. 20005

Dear Ms. Shull:

Enclosed are the nomination and additional materials for the

Waters and Elsa Burrows Historic District, Osprey, Sarasota County, Florida

Please do not hesitate to contact me at (850) 245-6364 if you have any questions or require any additional information.

Sincerely,

Barbara E. Mattick, Ph.D.
Deputy State Historic Preservation Officer
for Survey & Registration

Enclosures

500 S. Bronough Street • Tallahassee, FL 32399-0250 • <http://www.flheritage.com>

Director's Office
(850) 245-6300 • FAX: 245-6436

Archaeological Research
(850) 245-6444 • FAX: 245-6436

Historic Preservation
(850) 245-6333 • FAX: 245-6437