



If this material is under copyright status, it has been reproduced for the purpose of private study only, and must not be further reproduced or distributed without permission of the copyright owner.

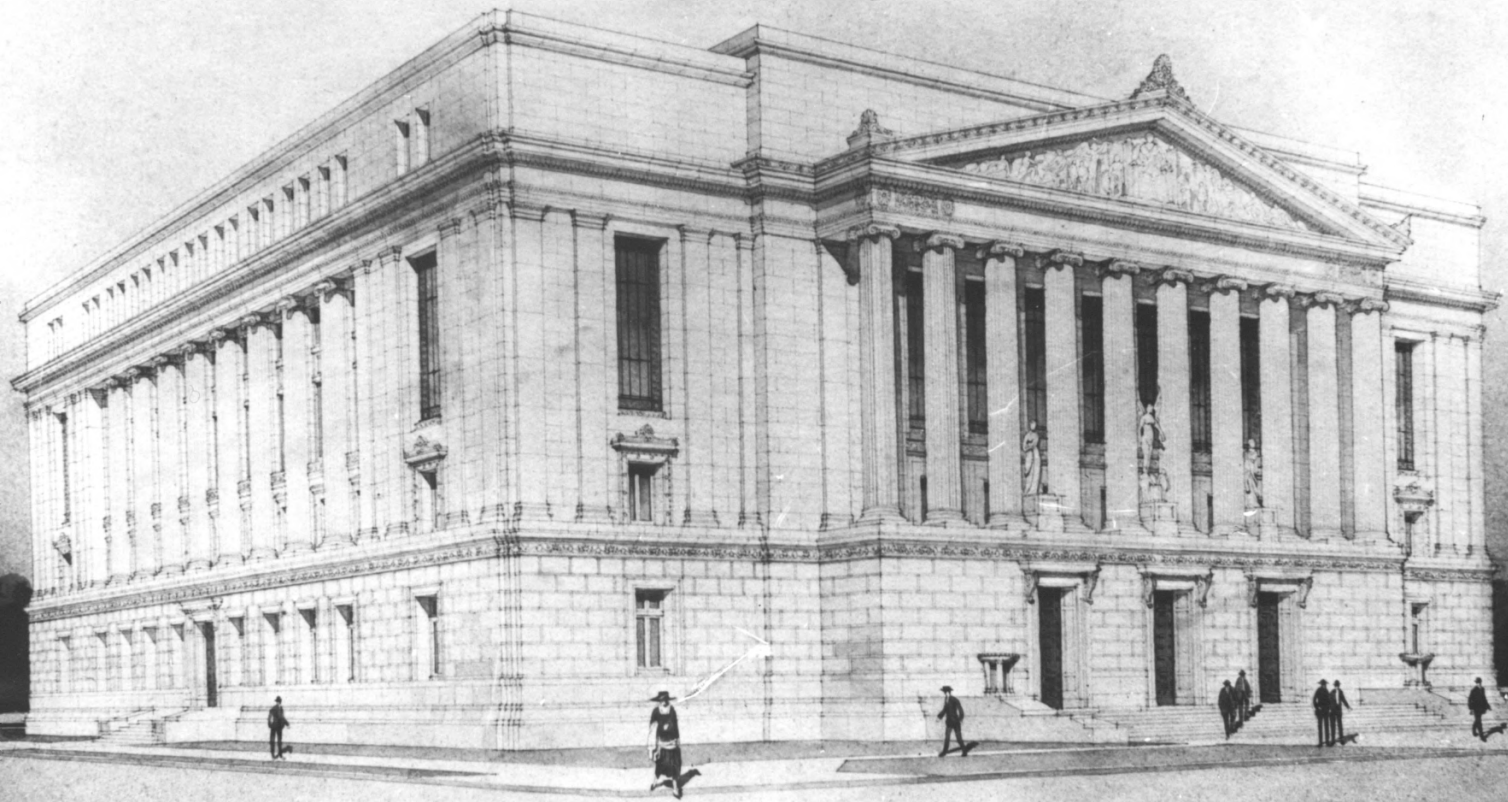
CALIFORNIA STATE LIBRARY

Source: CALIF. SECTION PHOTOGRAPH COLLECTION

State Bldgs: Capitol, ca 1885-1895

Neg # 6L 3146

State Capitol - Capitol Extension Group
West end of Capitol Park
City & County of Sacramento, California
Photographer unknown, ca. 1895
California State Library
Looking south; two blocks of historic
district on far right
No. 1 of 32



LIBRARY AND COURTS BUILDING.
WEEKS AND DAY. ARCHITECTURE AND ENGINEERING.
SAN FRANCISCO AND SACRAMENTO.

If this material is under copyright status, it has been reproduced for the purpose of private study only, and must not be further reproduced or distributed without permission of the copyright owner.

CALIFORNIA STATE LIBRARY

Source: CALIF SECTION Photograph Collection

State Bldgs: California State Library: Library +
Courts Bldg.

Library & Courts Bldg-Capitol Extension
914 Capitol Mall
City & County of Sacramento, California
n/a (photo. or date)
California State Library
Looking southwest, front & east facades
(modified drawings, 1919)
No. 2 of 32



109-44J-15(4-8-25-1P)(12-1000)

If this material is under copyright status, it has been reproduced for the purpose of private study only, and must not be further reproduced or distributed without permission of the copyright owner.

CALIFORNIA STATE LIBRARY

Source: CALIF STATE ARCHIVES

RECORD TITLE: FINANCE - Administration - Director - State Capitol (Bldgs.) -
SACTO

LOCATION: VB258 BOX 1 F3254:22

Capitol foreground, Capitol Extension Group beyond. West end of Capitol Park City & County of Sacramento, California
photographer unknown; 8 April 1925
California State Archives
Aerial view looking west down Capitol Mall toward Sacramento River
No. 3 of 32



22119-6

If this material is under copyright status, it has been reproduced for the purpose of private study only, and must not be further reproduced or distributed without permission of the copyright owner.

CALIFORNIA STATE LIBRARY

Source: CALIF SECTION Photograph Collection

State Bldgs: CAPITOL EXTENSION

Neg # 2448

Library & Courts Bldg on lt.; fountain plaza center; Office Bldg on rt; Cap. Extension Group 900 block Capitol Mall City & County of Sacramento, California photographer unknown, ca. 1927
California State Library
Taken from Capitol looking west
No. 4 of 32



If this material is under copyright status, it has been reproduced for the purpose of private study only, and must not be further reproduced or distributed without permission of the copyright owner.

CALIFORNIA STATE LIBRARY

Source: CALIF. STATE ARCHIVES

RECORD Title: State Capitol Photo
LOCATION: UB443 F3757:26

Office Bldg on lt; fountain plaza & Capitol center; Lib. & Cts. Bldg on rt Capitol Extension Group 900 bl. Cap.Mall. City & County of Sacramento, California
photographer unknown, ca. 1927
California State Archives
Looking east
No. 5 of 32



Frederick
FOTO
SERVICE

24M1

If this material is under copyright status, it has been reproduced for the purpose of private study only, and must not be further reproduced or distributed without permission of the copyright owner.

CALIFORNIA STATE LIBRARY

Source: CALIF. SECTION Photograph Collection

State Bldgs: Office Bldg. #1

Office Building-Capitol Ext. Group
915 Capitol Mall
City & County of Sacramento, California
"Frederick", 1 April 1924
California State Library
Looking north at front facade
No. 6 of 32



BRING ME MEN TO MATCH MY BULLS

SACRAMENTO, CAL.

If this material is under copyright status, it has been reproduced for the purpose of private study only, and must not be further reproduced or distributed without permission of the copyright owner.

CALIFORNIA STATE LIBRARY

Source: CALIF SECTION Photograph Collection

State Bldgs: Office Bldg # 1

Neg # 3823

Office Building - Capitol Ext. Group
915 Capitol Mall
City & County of Sacramento, California
photographer unknown, ca. 1929
California State Library
Looking north at front facade across
fountain plaza
No. 7 of 32



Robert G.

If this material is under copyright status, it has been reproduced for the purpose of private study only, and must not be further reproduced or distributed without permission of the copyright owner.

CALIFORNIA STATE LIBRARY

Source: CALIF. SECTION Photograph Collection

Sanford, Edward Field, Jr.

Neg # 9411

Pediment of Lib. & Cts. Bldg-Capitol
Extension Group, 914 Capitol Mall
City & County of Sacramento, California
photographer unknown; signed by sculptor
"Sanford Jr 1925"
Looking east
California State Library
No. 8 of 32



If this material is under copyright status, it has been reproduced for the purpose of private study only, and must not be further reproduced or distributed without permission of the copyright owner.

CALIFORNIA STATE LIBRARY

Source: CALIF SECTION Photograph Collection

State Bldgs: Library-Courts Bldgs

Neg # 6578

Library & Courts Bldg - Capitol Ext.
Group; 914 Capitol Mall
City & County of Sacramento, California
photographer unknown, July 1926
California State Library
Looking to southwest at front & east
side; landscaping underway
No. 9 of 32



INTO THE HIGHLANDS OF THE MIND LET ME GO

If this material is under copyright status, it has been reproduced for the purpose of private study only, and must not be further reproduced or distributed without permission of the copyright owner.

CALIFORNIA STATE LIBRARY

Source: CALIF SECTION Photograph Collection

STATE Bldgs: STATE Library: Library + Courts

Bldg

Neg #924

Library & Courts Bldg - Capitol Ext.
Group, 914 Capitol Mall
City & County of Sacramento, California
photographer [?] Lugg, ca. 1938
California State Library
Looking to south; front facade with
fountain plaza in foreground
No. 10 of 32



247-5

If this material is under copyright status, it has been reproduced for the purpose of private study only, and must not be further reproduced or distributed without permission of the copyright owner.

CALIFORNIA STATE LIBRARY

Source: CALIF STATE ARCHIVES

Record Title: Finance - Administration - Director - State Capitol (Bldgs) -

LOCATION: UB 258 SACTO BOX 1 F3254:22

Library & Courts Bldg. - Capitol Ext.
Group, 914 Capitol Mall
City & County of Sacramento, California
photographer unknown, ca. 1932
California State Archives
Looking to southeast at front facade
and west side.
No. 11 of 32



Main entrance

State Bldgs. Library Courts Bldg.

Source: ~~Calif. State Library Photograph Collection~~

CALIFORNIA STATE LIBRARY

If this material is under copyright
status, it has been reproduced for
the purpose of private study only,
and must not be further reproduced
or distributed without permission of
the copyright owner.

Center entry Library & Courts Bldg.
Cap. Extension Gr., 914 Capitol Mall
City & County of Sacramento, California
photographer unknown, ca. 1927

California State Library
Looking to south at bronze doors &
entry detail.

No. 12 of 32



If this material is under copyright status, it has been reproduced for the purpose of private study only, and must not be further reproduced or distributed without permission of the copyright owner.

CALIFORNIA STATE LIBRARY

Source: CALIF. SECTION Photograph Collection

State Bldgs: Office Bldg # 1: INTERIOR: FOYER

Office Building-Capitol Extension Group
914 Capitol Mall
City & County of Sacramento, California
photographer unknown, prob. ca. 1928
California State Library
Inner vestibule, cross view east to west
No. 13 of 32



THE VESTIBULE IS
DEDICATED TO THE
MEN AND WOMEN
WHO SAVED THE
LIFE AND HONOR
OF THE
WORLD WAR

THE VESTIBULE IS
DEDICATED TO THE
MEN AND WOMEN
WHO SAVED THE
LIFE AND HONOR
OF THE
WORLD WAR

If this material is under copyright status, it has been reproduced for the purpose of private study only, and must not be further reproduced or distributed without permission of the copyright owner.

CALIFORNIA STATE LIBRARY

Source: CALIF SECTION Photograph Collection

State Bldgs: Library - Courts Bldg: Foyer + Vestibule

Neg # 813

Library & Courts Bldg., Capitol Extension Group, 914 Capitol Mall
City & County of Sacramento, California
photographer unknown, prob. ca. 1929
California State Library
Memorial Vestibule, cross view west to east.

No. 14 of 32



THIS HOUSE
OF PEACE SHALL
STAND WHILE MEN
FEAR NOT TO DIE
IN ITS DEFENSE



Library & Courts Bldg., Capitol Extension Group, 914 Capitol Mall
City & County of Sacramento, California
photographer unknown, prob. ca. 1929
California State Library
Memorial Vestibule, marble & bronze
plaque, base, urn & lamps west end
No. 15 of 32

If this material is under copyright status, it has been reproduced for the purpose of private study only, and must not be further reproduced or distributed without permission of the copyright owner.

CALIFORNIA STATE LIBRARY

Source: CALIF STATE LIBRARY PHOTOGRAPH COLLECTION

State Bldgs: LIBRARY-COURTS: Foyer - VESTIBULE

Neg # 8271



Library and Courts Bldg., Capitol Extension Group, 914 Capitol Mall
City & County of Sacramento, California
photographer unknown, prob. ca. 1929
California State Library
Court Room first floor
No. 16 of 32

If this material is under copyright status, it has been reproduced for the purpose of private study only, and must not be further reproduced or distributed without permission of the copyright owner.

CALIFORNIA STATE LIBRARY

Source: CALIF SECTION Photograph Collection

State Bldgs: COURTS: Library & COURTS Bldg:
Supreme & Appellate Court Room, 1st
Floor



If this material is under copyright status, it has been reproduced for the purpose of private study only, and must not be further reproduced or distributed without permission of the copyright owner.

CALIFORNIA STATE LIBRARY

Source: CALIF. SECTION Photograph Collection

State Bldgs: Library - Courts Bldg Court-Room

Neg # 6577

Library & Courts Bldg., Capitol Extension Group, 914 Capitol Mall
City & County of Sacramento, California
photographer unknown, prob. ca. 1929
California State Library
Court Room fifth floor converted to
Dept. of Education's "board room."
No. 17 of 32



Library & Courts Bldg., Capitol Extension Group, 914 Capitol Mall
City & County of Sacramento, California
photographer unknown, prob. ca. 1929
California State Library
Grand Stairway from first floor level
No. 18 of 32

If this material is under copyright status, it has been reproduced for the purpose of private study only, and must not be further reproduced or distributed without permission of the copyright owner.

CALIFORNIA STATE LIBRARY

Source: CALIF. SECTION PHOTOGRAPH COLLECTION

STATE Bldgs: Library - Courts Bldg. : FOYER -
VESTIBULE

Neg # 5266



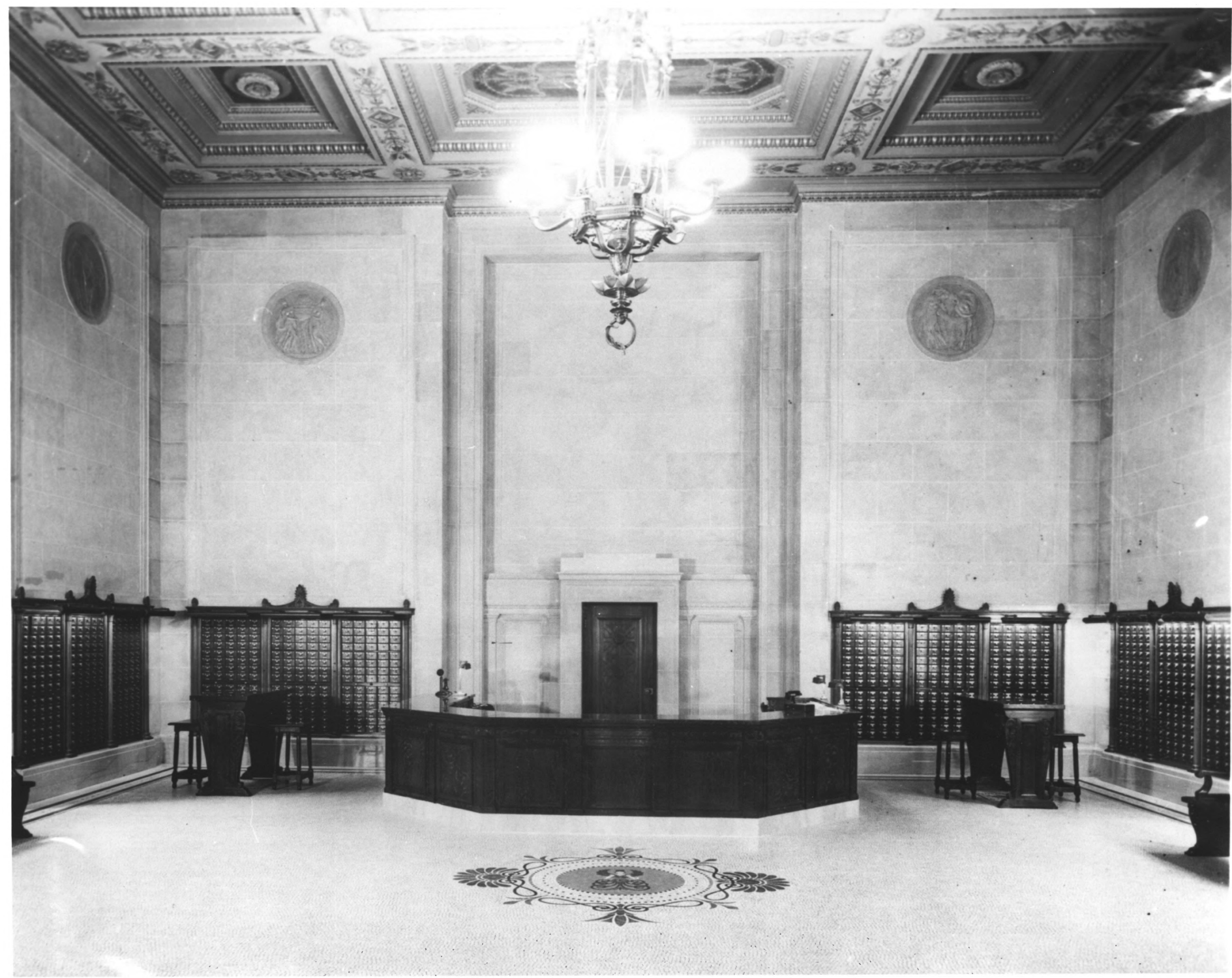
If this material is under copyright status, it has been reproduced for the purpose of private study only, and must not be further reproduced or distributed without permission of the copyright owner.

CALIFORNIA STATE LIBRARY

Source: CALIF SECTION Photograph Collection

State Bldgs. : library & Courts : library OPEN HOUSE, 1954

Library & Courts Bldg., Capitol Extension Group, 914 Capitol Mall
City & County of Sacramento, California
photographer unknown, 1954
California State Library
State Librarian's Office & Library
No. 19 of 32



Library & Courts Bldg., Capitol Extension Group, 914 Capitol Mall
City & County of Sacramento, California
photographer "McCurry", prob. ca. 1929
California State Library
Public Catalogue Room looking inward to
south. Orig. photo shows ceiling &
chandelier

No. 20 of 32



Library & Courts Bldg., Capitol Extension Group, 914 Capitol Mall
City & County of Sacramento, California
photographer unknown, proba ca. 1929
California State Library
Bronze statue "Inspiration" by Sanford
in west window of Catalogue Room.
No. 21 of 32

If this material is under copyright status, it has been reproduced for the purpose of private study only, and must not be further reproduced or distributed without permission of the copyright owner.

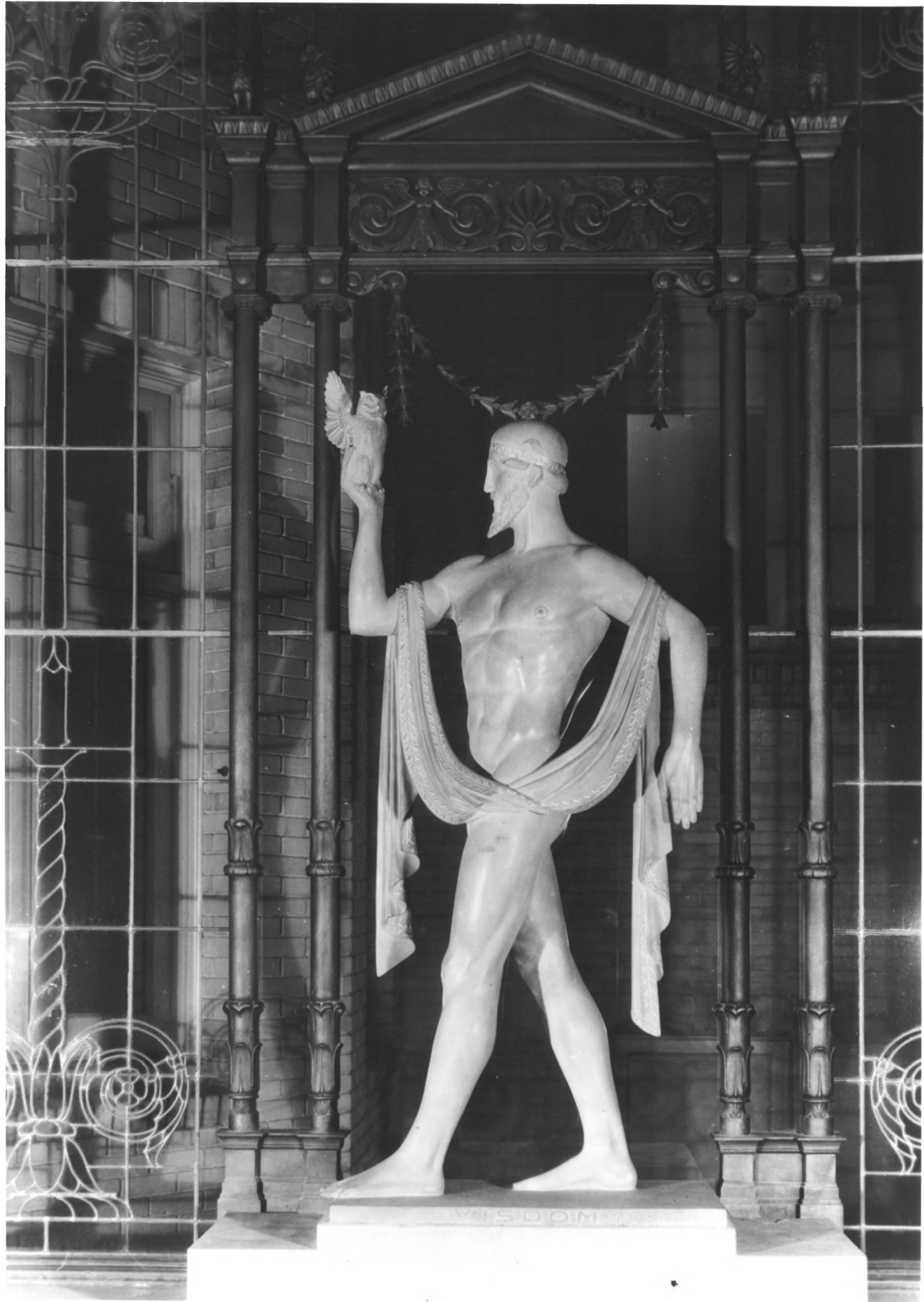
CALIFORNIA STATE LIBRARY

Source: CALIF. SECTION Photograph Collection

State Bldgs Capitol Extension: Statuary:

"Inspiration"

Neg #46



Library & Courts Bldg., Capitol Extension Group, 914 Capitol Mall
City & County of Sacramento, California
photographer unknown, prob. ca. 1929
California State Library
Bronze statue "Wisdom" by Sanford in
east window of Catalogue Room.
No. 22 of 32

If this material is under copyright status, it has been reproduced for the purpose of private study only, and must not be further reproduced or distributed without permission of the copyright owner.

CALIFORNIA STATE LIBRARY

Source: CALIF. SECTION Photograph Collection

State Bldgs: Statuaries "Wisdom"

Neg # 46a



If this material is under copyright status, it has been reproduced for the purpose of private study only, and must not be further reproduced or distributed without permission of the copyright owner.

CALIFORNIA STATE LIBRARY

Source: CALIF. SECTION Photograph Collection

STATE Bldgs Library Library-COURTS Bldg. (INTERIOR)

Neg # 250a

Library & Courts Bldg., Capitol Extension Group, 914 Capitol Mall
City & County of Sacramento, California
photographer unknown, prob. ca. 1929
California State Library
Reading Room looking from west to east
with Dixon's mural on south wall.
No. 23 of 32



If this material is under copyright status, it has been reproduced for the purpose of private study only, and must not be further reproduced or distributed without permission of the copyright owner.

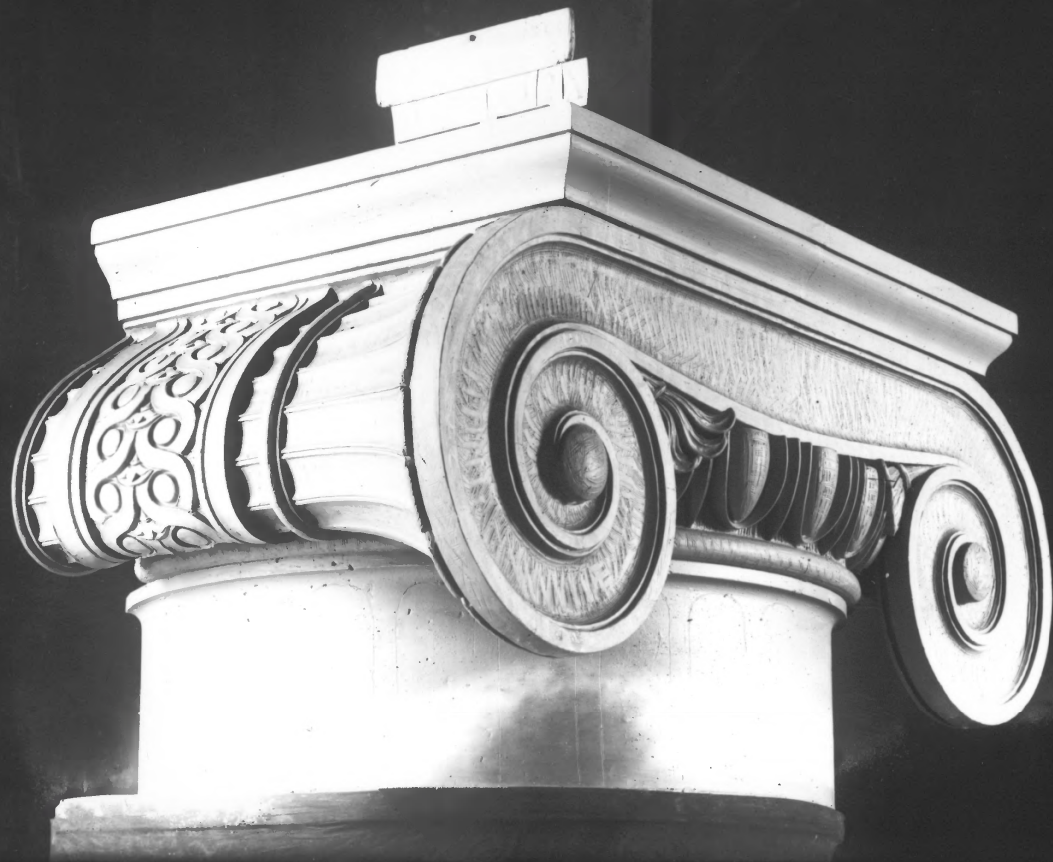
CALIFORNIA STATE LIBRARY

Source: CALIF. SECTION Photograph Collection

State Bldgs: CALIF. State Library: CALIF. Room

Neg # 5685 Library & Courts Bldg., Capitol Extension Group, 914 Capitol Mall
City & County of Sacramento, California
photographer unknown, prob. ca. 1929
California State Library
California Room looking from east to west.

No. 24 of 32

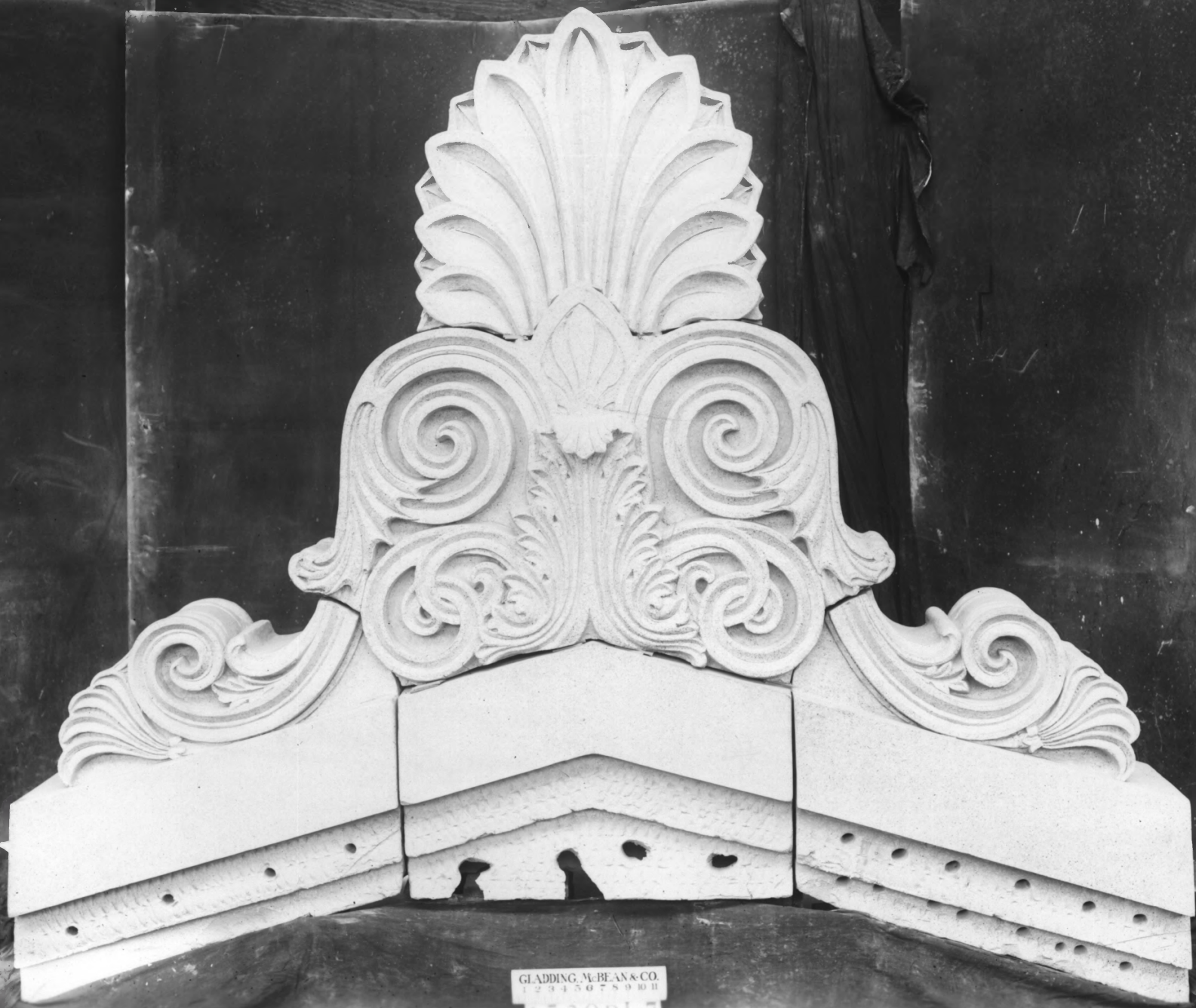


If this material is under copyright status, it has been reproduced for the purpose of private study only, and must not be further reproduced or distributed without permission of the copyright owner.

CALIFORNIA STATE LIBRARY

Source: Gladding McBean Archives

Capitol Extension Group (volute model)
900 block Capitol Mall
City & County of Sacramento, California
Photographer unknown
1922
Gladding, McBean & Co., Lincoln, CA.
n/a



GLADDING, McBEAN & CO.
123456789011

1530P17

If this material is under copyright status, it has been reproduced for the purpose of private study only, and must not be further reproduced or distributed without permission of the copyright owner.

CALIFORNIA STATE LIBRARY

Source:

Gladding McBean Archives

Capitol Extension Group (antifix model)
900 block Capitol Mall
City & County of Sacramento, California
Photographer unknown
1922
Gladding, McBean & Co., Lincoln, CA.
n/a
No. 26 of 32

GLADDING, McBEAN & CO.

2 3 4 5 6 7 8 9 10 11

1520BK6



If this material is under copyright
, it has been reproduced for
the purpose of private study only,
and shall not be further reproduced
or distributed without permission of
the copyright owner.

CALIFORNIA STATE LIBRARY

Source: Gladding McBean Archives

Capitol Extension Group (frieze model)
900 block Capitol Mall
City & County of Sacramento, California
Photographer unknown
1922
Gladding, McBean & Co., Lincoln, CA.
n/a
No. 27 of 32



Lib. & Courts Bldg on lt., fountain
plaza center; Office Bldg on rt; Cap.
Extension Group, 900 block Capitol Mall
City & County of Sacramento, California
R. Parrott, November 1983
California State Library
Taken from Capitol looking west
No. 28 of 32

OBI, LIB. & COURTS FROM THE CAPITOL,



Library & Courts Bldg., Capitol Extension Group, 914 Capitol Mall

City & County of Sacramento, California

R. Parrott, November 1983

California State Library

Looking south at facade

No. 29 of 32

FRONT of LIB. & COURTS.



Office Building, Capitol Extension
Group, 915 Capitol Mall
City & County of Sacramento, California
R. Parrott, November 1983
California State Library
Looking north at facade
No. 30 of 32

FRONT of OBI.



Library & Courts bldg., Capitol Extension
Group, 914 Capitol Mall

City & County of Sacramento, California

R. Parrott, November 1983

California State Library

Looking West at East side

No. 31 of 32

EAST side view - Lib. & COURTS.



Small, rectangular windows or decorative elements along the top edge of the building's facade.

Large, vertical windows arranged in a central row on the second floor of the building.

Small, rectangular windows or decorative elements along the bottom edge of the building's facade.

6
\$1
IN BEFOR
8:30
A.M.

Office Building, Capitol Extension Group

915 Capitol Mall

City & County of Sacramento, California

R. Parrott, November 1983

~~California State Library~~ 081

Looking South at Rear Facade

No. 32 of 32

REAR VIEW OF OBI,