



Photographs Accompanying Archeological Survey of Alabama.

All photographs by the Alabama Museum of Natural History.

1. Mound at Snows Bend. Located in the bend of Warrior River, nine miles below Tuscaloosa.



1470

2. Mound at Big Reddleston Lake. The Camp of the Labana Musket Party is shown on top of the Mound.

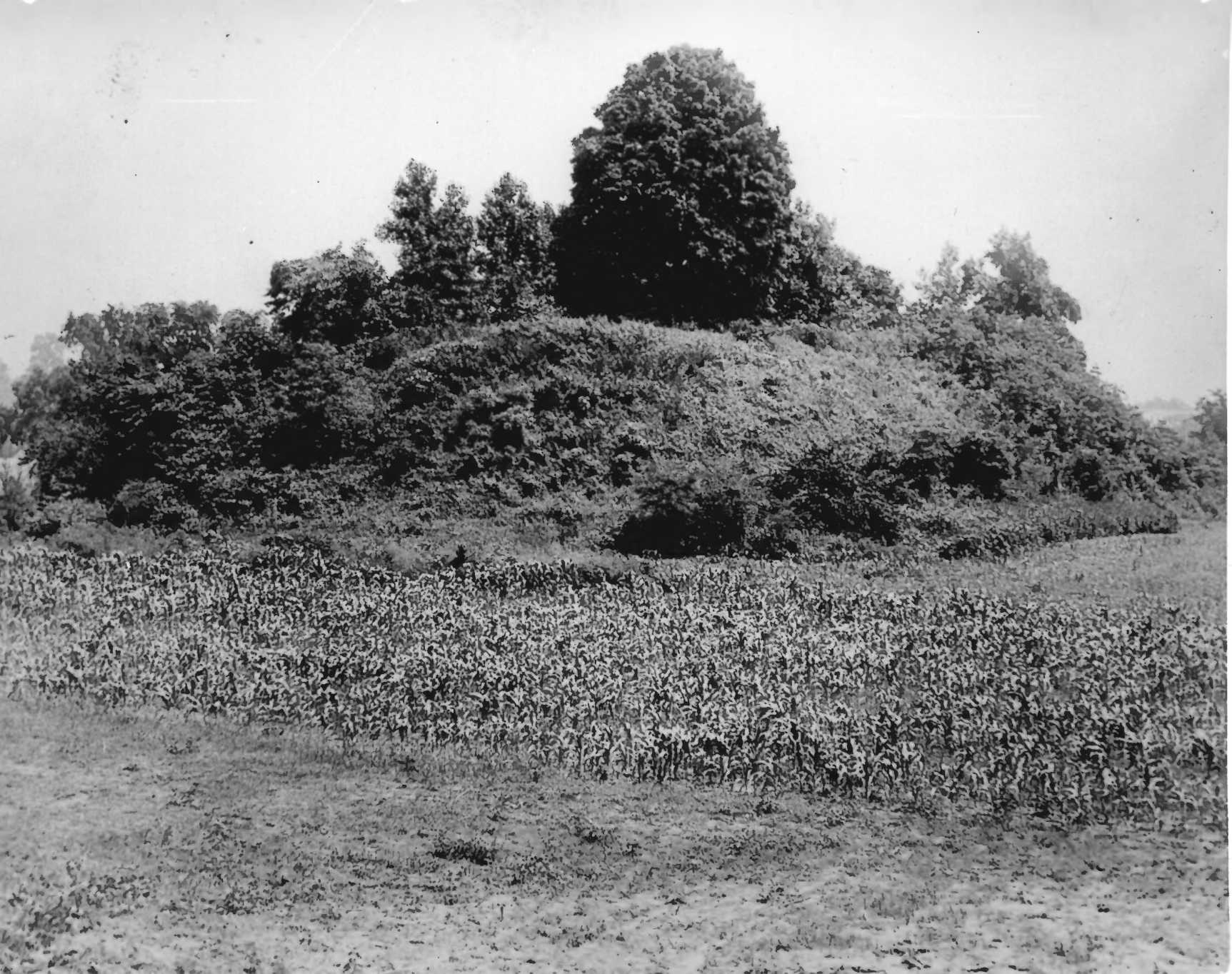




1500

3. View of Hottel near Forikland, looking north.





4. Looking south over large mound, near Florence. This Mound is the largest on the Tennessee River, attaining a height of 42 feet.





5. Mound "301" at Bottle Creek. This is the largest of a group of 18 mounds at that site.







6. One of the smaller mounds "2610" of the group at Bottle Creek.



Ba 4 2

7. Alabama Museum Field party beginning excavations on "Bel" at  
Bottle Creek.





3. Right half of panorama, looking north over Mound at Fort Toulouse. The village site is in the foreground.







9. Left half of program of the above view.



10. Burial Urn with Cover, unearthened at Fort Toulouse, by Alabama Museum party. This urn contained the burial of two adult individuals.

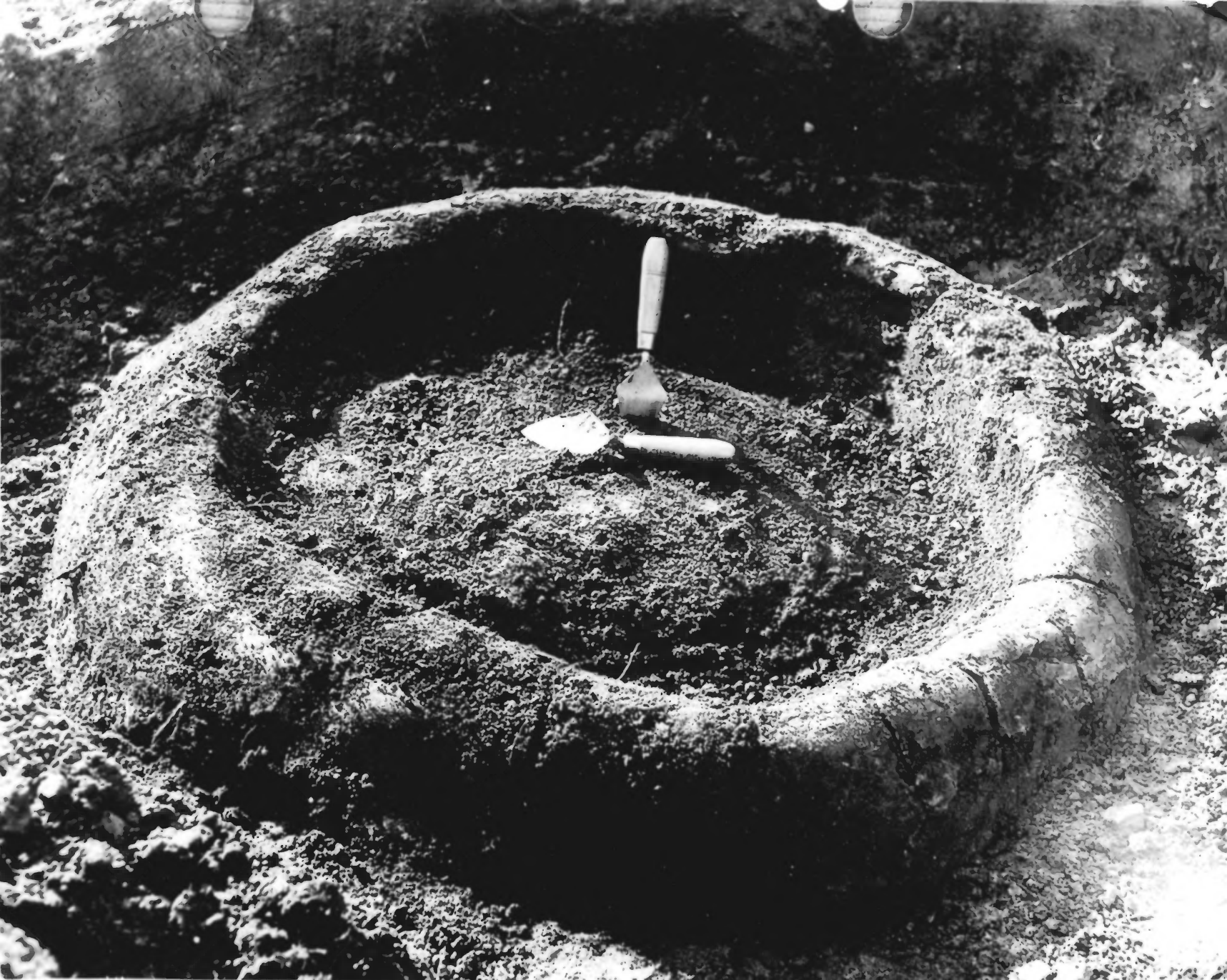




11. Mound "B" is the largest of the group of 40 mounds located at Mound Park. This mound has a maximum height of 57 feet and covers about 1 acre of ground.



12. View of plateau, with Mounds "X", "Y" and "A" of the Wood  
Park Group in the background.





13. Fireplace of "Ceremonial Altar" made of baked clay. Uncovered  
in the burial ground at Mound Park.



It. Series of an adult male, discovered in the