

mp. 2245



# National Register of Historic Places Registration Form

This form is for use in nominating or requesting determinations for individual properties and districts. See instructions in National Register Bulletin, *How to Complete the National Register of Historic Places Registration Form*. If any item does not apply to the property being documented, enter "N/A" for "not applicable." For functions, architectural classification, materials, and areas of significance, enter only categories and subcategories from the instructions. Place additional certification comments, entries, and narrative items on continuation sheets if needed (NPS Form 10-900a).

## 1. Name of Property

Historic name Madonna of the Trail  
Other names/site number KHRI #127-1180-00052  
Name of related Multiple Property Listing Historic Resources of the Santa Fe Trail (1993, rev 2012)

## 2. Location

Street & number 11 E. Main Street (northwest corner of US. Hwy 56 and KS Hwy 177) not for publication  
City or town Council Grove vicinity  
State Kansas Code KS County Morris Code 127 Zip code 66846

## 3. State/Federal Agency Certification

As the designated authority under the National Historic Preservation Act, as amended,  
I hereby certify that this  nomination  request for determination of eligibility meets the documentation standards for registering properties in the National Register of Historic Places and meets the procedural and professional requirements set forth in 36 CFR Part 60.

In my opinion, the property  meets  does not meet the National Register Criteria. I recommend that this property be considered significant at the following level(s) of significance:  
 national  statewide  local Applicable National Register Criteria:  A  B  C  D

Patrick Zollner 2-12-18  
Signature of certifying official/Title Patrick Zollner, Deputy SHPO Date

Kansas State Historical Society  
State or Federal agency/bureau or Tribal Government

In my opinion, the property  meets  does not meet the National Register criteria.

\_\_\_\_\_  
Signature of commenting official Date

\_\_\_\_\_  
Title State or Federal agency/bureau or Tribal Government

## 4. National Park Service Certification

I hereby certify that this property is:  
 entered in the National Register  determined eligible for the National Register  
 determined not eligible for the National Register  removed from the National Register  
 other (explain:)

[Signature] 3-26-18  
Signature of the Keeper Date of Action

Madonna of the Trail  
Name of Property

Morris County, Kansas  
County and State

**5. Classification**

**Ownership of Property**  
(Check as many boxes as apply.)

|                                     |                  |
|-------------------------------------|------------------|
| <input type="checkbox"/>            | private          |
| <input checked="" type="checkbox"/> | public - Local   |
| <input type="checkbox"/>            | public - State   |
| <input type="checkbox"/>            | public - Federal |

**Category of Property**  
(Check only **one** box.)

|                                     |             |
|-------------------------------------|-------------|
| <input type="checkbox"/>            | building(s) |
| <input type="checkbox"/>            | district    |
| <input type="checkbox"/>            | site        |
| <input type="checkbox"/>            | structure   |
| <input checked="" type="checkbox"/> | object      |

**Number of Resources within Property**  
(Do not include previously listed resources in the count.)

| <u>Contributing</u> | <u>Noncontributing</u> |              |
|---------------------|------------------------|--------------|
|                     |                        | buildings    |
| 1                   |                        | sites        |
|                     |                        | structures   |
| 1                   |                        | objects      |
| 2                   |                        | <b>Total</b> |

**Number of contributing resources previously listed in the National Register**

NA

**6. Function or Use**

**Historic Functions**  
(Enter categories from instructions.)

RECREATION & CULTURE: monument/marker

**Current Functions**  
(Enter categories from instructions.)

RECREATION & CULTURE: monument/marker

**7. Description**

**Architectural Classification**  
(Enter categories from instructions.)

N/A

**Materials**  
(Enter categories from instructions.)

foundation: STONE

walls: N/A

roof: N/A

other: STONE: Granite

**Madonna of the Trail**

Name of Property

**Morris County, Kansas**

County and State

---

Narrative Description

---

**Summary**

The Kansas Madonna of the Trail Monument is located at the northeast corner of KS Highway 177 and US Highway 56 in Council Grove, Morris County, Kansas. The Madonna Monument is located in a landscaped park at the intersection of the town's two major highways. Concrete sidewalks border the site and three walks extend like spokes to the center of the park with a small plaza around the monument and plantings at the base.

The Madonna of the Trail is a monument to Pioneer Women that consists of a central granite statue depicting a pioneer woman holding a baby with a small child clutching her dress. The statue rests on a square stone pedestal featuring various inscriptions on each side. The Council Grove monument is one of twelve placed across the country by the Daughters of the American Revolution (DAR) in the late 1920s. The front and back panels are identical on each of the twelve monuments with the front panel inscribed "The Madonna of the Trail," and the back panel inscribed "Old Trails National Road." The side panels of the base are different on each of the twelve monuments and reflect local history. The Council Grove inscriptions note the site and town's history of the "council" between the Kaw and Osage Indians and white men regarding travel to Santa Fe, the role as a camping place on the Santa Fe Trail, and Seth Hays, the first white settler in the area.

The park is a grass lawn with mature trees and added features including a flag pole and three memorial plaques. Several park benches, vintage pole lights, and trash receptacles have been placed along walkways throughout the park. The only known alteration has been the installation and subsequent removal of a small fountain west of the monument. The park and statue are well maintained and continue to be one of Council Grove's prominent trail-related historic tourism attractions.

---

**Elaboration**

Setting

The Madonna Monument is located at the northeast corner of the primary intersection in Council Grove where the north/south KS Highway 177 bisects the east/west US Highway 56. Highway 177 has fast food establishments near the intersection while Highway 56 has local businesses including a car dealership and grocery store. A convenience store is located south of the Madonna Park on this busy highway strip.

A commercial building fronting Hwy 177 is located north of the park. Immediately east of the park is the Post Office Oak Museum and a remnant of the original tree - the Post Office Oak.<sup>1</sup> The tree died in 1990, so-named the Post Office Oak because early Santa Fe Trail travelers left messages in stone cache at the foot of the tree, advising other travelers of trail conditions, such as availability of water and grass, as well as warning of hostile Indians along the trail. A marker was placed on the site of the original tree and the site remains a local landmark. In close proximity to one another, the Post Office Oak and Madonna Monument routinely share visitors.

The Council Grove Madonna of the Trail monument is centrally located in the park and accessed by concrete sidewalks that extend from perimeter walks along the streets on the west, south and southwest corner to a central round pad surrounding the monument. Seasonal flowers are maintained at the base of the monument. The park is comprised of a grass lawn with mature deciduous trees in the northeast half of the site. The lawn is slightly raised with a concrete retaining wall along the perimeter sidewalk on the west and southwest corner.

Other park features include a flagpole southwest of the monument, a small sitting area with picnic table northwest of the monument under shade trees, and a few memorial plaques. A wood pedestal sign (historic marker) and interpretive plaque (Santa Fe National Historic Trail – National Park Service and City of Council Grove) are located off the sidewalk at the southwest corner of the site. Two separate plaques on marble bases rest at the base of the flag pole. The first reads "Presented and Dedicated July 24, 1964 by KS DAR Conservation, Miss Pauline Cowger, Regent, Mrs. Homer E. Smith, Conservation Chair;" the second marker reads, "Flag Pole donated by: Council Oak Chapter DAR, City of Council Grove,

---

<sup>1</sup> The stump was recognized by the National Park Service as a certified historic site on the Santa Fe National Historic Trail until deterioration of the lower part of the towering trunk necessitated removal of the lower part, and the upper part was moved to a new location. Since the remainder of the trunk was no longer on its original site, it was decertified by the NPS as a Santa Fe National Historic Trail site (Ken McClintock, Unpublished Historic of Council Grove's Madonna of the Trail Monument, 2017). It is still considered part of Council Grove's Santa Fe Trail-related National Historic Landmark (listed 1963 and updated in 1985).

Madonna of the Trail

Name of Property

Morris County, Kansas

County and State

Kansas State DAR and NEOTA Club, Sept. 7, 2003.” Finally, a small plaque has been placed near the southwest corner of the site recognizing T.W. Whiting who donated a portion of the land for the park. The plaque reads, “In Honor of T.W. Whiting Donor of Madonna Park Site, Placed by Council Oak Chapter DAR, 1954. Several park benches, vintage pole lights, and trash receptacles have been placed along walkways throughout the park. The park site and Madonna monument are contributing resources in this nomination.

New concrete sidewalks and ramps were constructed in July 2003 for the ceremonies held for the 75<sup>th</sup> anniversary of the statue’s 1928 dedication. The original landscaping of the park was conducted over an eight-month period in 1929. Flood lights were purchased by the Council Grove Girl Scouts and a cascade water fountain was funded by the Boy Scouts.<sup>2</sup> The fountain was placed on the west side of the statue so it could be seen from further down Main Street. It was removed before 1970 when a second fountain replaced it in honor of Mr. Harry Thompkins.<sup>3</sup> The second fountain was removed c. 1980. Near the southeast corner of the park is a small, but growing, bur oak tree, transplanted there on June 27, 2009, by Kenneth W. McClintock. The tree is a descendant of the Post Office Oak which stood on the adjacent property for about 270 years prior to its death in 1990.<sup>4</sup>

The Madonna Monument

The Council Grove Madonna monument, one of twelve Madonna of the Trail statues designed by German immigrant August Leimbach in 1927-1928, was commissioned by the National Society of the Daughters of the American Revolution (DAR). The sculptures were cast from a composite stone called Algonite, a mixture of crushed marble, Missouri granite, stone cement and lead ore, resulting in a pinkish color. The mixture was poured into a mold and polished into its final form.

The monument features a ten-foot high sculpture of a pioneer woman and two small children. The woman, depicted with a homespun dress, sunbonnet, and heavy boots, is captured in a firm mid-stride, her eyes intently focused on the horizon to the west. In one arm she carries an infant, while the other hand clutches a rifle. Another child, a small boy, clings to her skirt. Thistles surround her feet. The sculpture rests on a large square base that is six feet in height and weighs approximately twelve tons. Beneath the base is a five-foot deep foundation, three feet of which are below ground. The monument weighs five tons, while the base weighs twelve tons.

The front and back panels are identical on each of the twelve monuments with the front panel inscribed "The Madonna of the Trail," and the back panel inscribed "Old Trails National Road." The side panels of the base are different on each of the twelve monuments and reflect local history.

The Madonna statue in Council Grove was dedicated on September 7, 1928. On two sides the inscriptions on its base are unique to the monument: 1) Here, east met west when the Old Santa Fe Trail was established August 10, 1825 at a council between the United States Commissioners and Osage Indians; and 2) 1825-1866 Trailsmen camped on the spot / 1847-1873 Kaw Indians lived here / 1847 – first white settler Seth Hays / 1847 – Council Grove a trading post.

- The statue faces west and on the west/front elevation of the pedestal is the inscription “Madonna of the Trail, NSDAR memorial to the pioneer mothers of the covered wagon days.”
- On the south elevation the pedestal is inscribed "Into the primitive west, face uplifting toward the sun, bravely she came, her children beside her. Here she made them a home, beautiful pioneer mother!"
- The east elevation of the pedestal is inscribed "The national old trails road."
- The pedestal's north elevation is inscribed "to the pioneer mother of America, through whose courage and sacrifice the desert has blossomed. The lamp became the home, the blazed trail the thoroughfare." The sculptor's name and the date of 1928 are engraved into the lower right corner of the north elevation of the pedestal.

With the exception of the placement of a “memory box” in 1978 during the 50<sup>th</sup> anniversary celebration (of the original statue dedication), there have been no known changes to the monument itself. The statue was restored by the KS DAR and Save Our Statuary (SOS) group in 1997. The primary changes to the site have occurred to the park itself include the addition and later removal of a small fountain west of the monument, the addition of park seating, lighting, etc. and replacement of the concrete sidewalks. The park and statue are well maintained and continue to serve as one of Council Grove’s historic trail-related resources.

<sup>2</sup> “To Light Madonna.” *Council Grove Republican*. 16 Oct. 1929.

<sup>3</sup> *Council Grove Republican*. 3 Mar 1970. 1.

<sup>4</sup> Ken McClintock, Unpublished History of Council Grove’s Madonna of the Trail Monument, 2017.

Madonna of the Trail  
Name of Property

Morris County, Kansas  
County and State

**8. Statement of Significance**

**Applicable National Register Criteria**

(Mark "x" in one or more boxes for the criteria qualifying the property for National Register listing.)

- A Property is associated with events that have made a significant contribution to the broad patterns of our history.
- B Property is associated with the lives of persons significant in our past.
- C Property embodies the distinctive characteristics of a type, period, or method of construction or represents the work of a master, or possesses high artistic values, or represents a significant and distinguishable entity whose components lack individual distinction.
- D Property has yielded, or is likely to yield, information important in prehistory or history.

**Criteria Considerations**

(Mark "x" in all the boxes that apply.)

Property is:

- A Owned by a religious institution or used for religious purposes.
- B removed from its original location.
- C a birthplace or grave.
- D a cemetery.
- E a reconstructed building, object, or structure.
- F a commemorative property.
- G less than 50 years old or achieving significance within the past 50 years.

**Areas of Significance**

SOCIAL HISTORY

ART

**Period of Significance**

1927-1928

**Significant Dates**

1928

**Significant Person**

(Complete only if Criterion B is marked above.)

NA

**Cultural Affiliation**

NA

**Architect/Builder**

August Leimbach, Sculptor

**Period of Significance (justification)**

The Period of Significance is the monument's date of construction and dedication – 1927-1928.

**Criteria Considerations (justification)**

As discussed in the revised multiple property nomination, the statue is eligible because the age, intent, and symbolic value of this resource contributes to the monument's own historical significance. This significance is in large-part directly tied to the effort to memorialize the Santa Fe Trail through the National Old Trails Association. Further, the statue remains in its original location in Council Grove along the former Santa Fe Trail.

Madonna of the Trail

Name of Property

Morris County, KS

County and State

Narrative Statement of Significance

**Summary**

The Madonna of the Trail Monument in Council Grove, Morris County, Kansas is nominated to the National Register under the Historic Resources of the Santa Fe Trail Multiple Property Submission (MPS). The monument is nationally significant as an example of the 'Monuments and Memorials' Property Type as defined in the MPS. The Madonna of the Trail is directly associated with the historic context 'Commemoration and Reuse of the Santa Fe Trail' and is significant under Criterion A in the area of social history and Criterion C as a significant example of the artistic work of Sculptor August Leimbach. The Council Grove Madonna retains a high degree of integrity of location, setting, feeling, and association and fulfills the registration requirements set forth in the MPS. Its period of significance is the monument's date of construction and dedication in 1927-1928.

One of twelve Madonna monuments erected across the United States along the National Old Trails Road by the National Society of the Daughters of the American Revolution (DAR), the Council Grove Madonna of the Trail Monument pays tribute to the pioneer women who helped settle the West. The Council Grove Madonna is one of only three (of the twelve) that are specific to the Santa Fe Trail. The monument also reflects the early twentieth century movement to commemorate historic roads and trails, a movement initiated by the DAR.

**Elaboration**

The Santa Fe Trail, Kansas, and Council Grove

The Santa Fe Trail MPS details the history of the Trail, the states and towns that were significant to the highway as well as the monuments and markers that have been placed to commemorate the Trail's role in the growth of America.<sup>5</sup> From 1821 until 1880 the Santa Fe Trail figured prominently in the development of the West. This first great Euro-American land trade route, was a highway for travel and communication between the Missouri River and the Rio Grande. From 1825 to 1827, it was the first major road network to be surveyed west of Missouri, and as such, it was a template for future road development.

The Santa Fe Trail traversed the entire length of Kansas from east to southwest; thus, the history of Kansas and the Trail are tightly interwoven. Some of the first acts of the early Kansas Territorial Legislature were directly related to the Santa Fe Trail and locations along the route. The 1855 legislature made portions of the "Santa Fe Road" a territorial road. According to this act, the counties through which the road passed were ordered to keep the road in good repair and not less than 100 feet wide.<sup>6</sup>

The village of Council Grove grew as Kansas Territory moved toward statehood and more people came west and traveled along the Santa Fe Trail as the Indians were moved farther away.<sup>7</sup> Council Grove was the most important stopping place between the Missouri River and Santa Fe.<sup>8</sup> The portion of the Santa Fe Trail between Franklin, Missouri and Council Grove was an area of transition where wagons from the Fort Leavenworth military roads merged onto the trail along with wagons bound for Oregon. Additionally, Council Grove represented a transition zone between peaceful and less settled Indian tribes. The Osage and Kaw peoples encountered on the route to Council Grove were considered relatively peaceful. Beyond Council Grove, the territories of the Pawnee, Apache, Kiowa, and Comanche were less stable. It was at Council Grove that caravans to Santa Fe stop to supply and organize into large columns for protection and association, easing repair and sharing of resources. The caravans could accomplish between 10 to 15 miles of the route per day nurtured by supplies acquired in Council Grove necessary for the humans, animals and equipment making the trip.

<sup>5</sup> Kansas State Historical Society. *Historic Resources of the Santa Fe Trail National Register of Historic Places Multiple Property Documentation Form*. Washington, DC: National Parks Service, 1993, rev. 2012.

<sup>6</sup> Kansas Territorial Legislature, first session, Chapter 118, Special Laws, *The Statutes of the Territory of Kansas; Passed at the First Session of the Legislative Assembly, One Thousand Eight Hundred and Fifty-Five*. Shawnee Manual Labor School, KT: John T. Brady, 1855, 960.

<sup>7</sup> "Dedication Ceremonies of the Madonna of the Trail, Council Grove, Kansas." Daughters of the American Revolution, 7 Sept 1928.

<sup>8</sup> "Brief Summary of the Santa Fe Trail through Kansas with Report of the Committee Appointed to Prepare a Correct Map." Reprinted from the *Eighteenth Biennial Report of the Kansas State Historical Society, 1911-1912*. Topeka, KS: Kansas State Historical Society, 1912.

Madonna of the Trail

Morris County, KS

Name of Property

County and State

The DAR and Sculptor August Leimbach

One of the goals of the National Society of the Daughters of the American Revolution is to “perpetuate the spirit of the men and women who achieved American independence by the acquisition and protection of historic spots and the erection of monuments.”<sup>9</sup> In 1902, Mrs. Fannie Geiger Thompson, the Kansas State Regent of the DAR, voiced the idea to mark the Santa Fe Trail through Kansas, as concern was raised that memory and proof of the trail was fading.<sup>10</sup> By 1907 the task had been completed in Kansas and taken up by state chapters in Colorado, Missouri, and New Mexico.<sup>11</sup> By 1912 further decision had been taken to include the Santa Fe Trail as part of the new national ocean to ocean roadway.<sup>12</sup> On this national highway, the DAR chose to memorialize the role of the woman pioneer. The Santa Fe Trail MPS details the role of women with many accounts from officers’ wives, women who traveled the trail in groups and those who, like their male counterparts, were looking for a better life for their children.<sup>13</sup> As the Council Grove Madonna Dedication program states, “The Pioneer Mother kept pace with her mate in sharing the perils of frontier life.”<sup>14</sup>

In April 1912, the National Old Trails Road Association was formed in Kansas City, Missouri with the primary mission to “assist the Daughters of the American Revolution in marking of the Old Trails and to promote the construction of an ocean to ocean highway of modern type worthy of its memorial character.”<sup>15</sup> The road stretched from Maryland to California and generally followed four historic trails: the National Pike (from Washington, DC to St. Louis) the Boonslick Trail (from St. Louis to Old Franklin), the Santa Fe Trail (from Old Franklin to Santa Fe), and the Padres Trail (from Santa Fe to the Pacific Coast).

Arlene B. Nichols Moss (Mrs. John Trigg Moss), chairwoman of the DAR Monuments Committee, chose St. Louis sculptor August Leimbach (1882-1965) to create the 18-foot tall Madonna statue. Leimbach was born in Elberfeld, Hesse, Germany to Kasimir and Maria Theresia Leimbach on April 14, 1882.<sup>16</sup> A student of art and architecture in Stuttgart and Hamburg, Leimbach immigrated to the United States, joining a brother living in St. Louis in 1910.<sup>17</sup> His reputation quickly grew across the United States. He was chosen as one of the lead architectural sculptors for the 1915 Panama–Pacific International Exposition held in San Francisco, CA.<sup>18</sup> His other works include decorative sculptures on the Wisconsin State Capitol in Madison, the Orpheum Theater in Salt Lake City, UT and a portrait sculpture of Edward Minor Gallaudet at Gallaudet College in Washington, DC.<sup>19</sup> As the United States entered World War Two, Leimbach, a German national, was forced to choose between living in an internment camp in the U.S. and returning to Germany.<sup>20</sup> He and his wife returned, leaving their grown children in St. Louis, MO. After surviving a prison camp in the USSR following the war, August and Frieda Leimbach returned to Germany where they lived until August died in 1965.<sup>21</sup>

The concept for the sculpture came from Arlene Moss who envisioned a statue similar to one designed by Denver sculptor Alice Cooper in Portland, Oregon, called Sacajawea and Jean-Baptiste (1905). Leimbach created the Madonna’s design in three days at the suggestion of a monument builder with whom he was working. He invited Moss to view the design and she approved. Leimbach earned \$1,000 for each of the twelve identical statues. A 1928 article for *The Federal Illustrator*, quotes Leimbach:

The idea I had, when I modeled the design was this: The pioneer mother with her children was waiting for the father at their blockhouse in the wild West, for the father did not come home as he had promised. She, believing him to be in danger, put her little child in a blanket, grasped the gun and with the boy ran out in the field to look for the father. The

<sup>9</sup> Almira Sheffield Peckham Cordry. *The Story of the Marking of the Santa Fe Trail by the Daughters of the American Revolution*. Topeka, KS: Kansas DAR, 1915. 13.

<sup>10</sup> Ibid, 16.

<sup>11</sup> Ibid, 11.

<sup>12</sup> Ibid, 20.

<sup>13</sup> *Santa Fe Trail MPS*.

<sup>14</sup> “Dedication Ceremonies” DAR.

<sup>15</sup> James Hinckley. *Route 66 Encyclopedia*. Stillwater, MN: Voyageur Press, 2010. 166.

<sup>16</sup> Ancestry.com. *Hesse, Germany, Births, 1851-1901* [database on-line]. Lehi, UT, USA: Ancestry.com Operations, Inc., 2016. Original data: Geburtenregister und Namensverzeichnisse. Hessisches Hauptstaatsarchiv, Wiesbaden, Deutschland.

<sup>17</sup> James M. Goode. *The Outdoor Sculpture of Washington, D.C.: A Comprehensive Historical Guide*. Washington, DC: Smithsonian Institution Press, 1974. 574.

<sup>18</sup> “August Leimbach.” Dict.CC [German-English Dictionary] accessed online on 16 Oct 2017 at [http://www6.dict.cc/wp\\_examples.php?lp\\_id=1&lang=en&s=architectural%20sculpture](http://www6.dict.cc/wp_examples.php?lp_id=1&lang=en&s=architectural%20sculpture).

<sup>19</sup> Goode. 574.

<sup>20</sup> “Statue Gets Interpretive Sign Panel.” *Palladium-Item*, 12 Dec 2012, A1-3 accessed on 15 Oct 2017, at Newspapers.com. Article included interview with Leimbach’s grandson.

<sup>21</sup> *Palladium-Item*, A3.

Madonna of the Trail

Morris County, KS

Name of Property

County and State

gun is sketched from the gun of Daniel Boone, with his carvings on the shaft. On the ground is prairie grass and cactus brushes, also arrowheads, and on one side in the shadows, there is visible in the original, a rattlesnake, partly covered by grass.<sup>22</sup>

Council Grove Gets a Madonna

There was tremendous competition between communities within the twelve states of the National Old Trails Association that the DAR had designated to receive the Madonna statues. A selection committee was formed that included Independence, Missouri Judge Harry S. Truman, Arlene B. Nichols Moss, chairwoman of the DAR Monuments Committee, and Frank Davis, who acted as secretary for the committee. The requirements for site selection included (1) It must be located on the National Old Trails Road, (2) it must be placed where the traveling public can see it and (3) it must be on a site which will be protected and maintained and "not become neglected or overgrown with weeds."<sup>23</sup>

At least nine Kansas communities vied for the Madonna statue.<sup>24</sup> Council Grove had a strong basis on which to base its application – the town's rich Santa Fe Trail-linked history. As the *Council Grove Downtown Historic District National Register Nomination* explains, Council Grove's efforts to attract tourists, begun in the twentieth century, were spurred on by the Great Roads Movement during the teens when automobile usage skyrocketed.<sup>25</sup> The town's efforts were further boosted by the 1921 centennial of the Santa Fe Trail and Council Grove's many trail-related attractions including the "Mystic" Padilla Monument, the Custer Elm, the Post Office Oak and the Kaw Mission. In the decades following World War II Council Grove cemented its place as one of Kansas' first heritage-tourism destinations and today still prides itself as a primary destination for heritage tourism.

Selection Committee member Harry Truman, in letters home to his wife Bess, described the group's first visit to the Kansas towns competing for the Madonna in the fall of 1927. Upon arriving in Council Grove Truman wrote, "The band met us at 9:30 P.M. march [sic] down the street in front of the cars and delivered us at the city hall where the DAR women were in session. They read us the history of the town and showed us the site."<sup>26</sup> Council Grove's efforts paid off although it took a year for the Committee to make their selection. In a letter dated October 2, 1927, Truman wrote, "The Kansas situation is settled. Council Grove won. It was a hard thing to settle."<sup>27</sup> Council Grove was selected in part because of their commitment to developing a memorial park at the entrance of the town where the statue was to be located.<sup>28</sup>

The site chosen for the Madonna was an abandoned hitch lot on Main Street that had been donated by T.W. and Alice H. Whiting in two tracts in 1916 and 1917 for use as a municipal hitch yard where the general public could "park" their horses, wagons, and other horse-drawn vehicles.<sup>29</sup> However, since motor vehicles had replaced horse-drawn vehicles and the lot was no longer needed for that purpose, the DAR was deeded a 70-foot tract along the north edge of the former municipal hitch yard.<sup>30</sup> By October 25, 1927, work had begun on the site by a crew of men working for Council Grove City Commissioner T. J. Crippen. Landscape architects from the state agricultural college had the previous day located the place for the monument, slightly back of the park's center.<sup>31</sup> A call went out in the local newspaper to residents for a hundred men to assist in move earth from the Neosho River bank to the site on Armistice Day, November 11, 1927. Many residents answered the call, and the grade of the park was raised above the adjacent roadways with the location of the statue to be the highest point in the park.<sup>32</sup>

<sup>22</sup> Katherine H. Ellis and D.L. Turner. *The White Mountains of Apache County*. Chicago, IL: Arcadia Publishing, 2010. 92.

<sup>23</sup> Jane Mallinson. "Harry Truman and the Selection of the Sites for the DAR Madonna Statues, Part 1." Santa Fe Trail Association. *Wagon Tracks* 9, 1 (Nov 1994). [http://digitalrepository.unm.edu/wagon\\_tracks/vol9/iss1/1/](http://digitalrepository.unm.edu/wagon_tracks/vol9/iss1/1/).

<sup>24</sup> *Council Grove Republican* 17 August 1927 article notes that in addition to Council Grove, the towns of Baldwin City, Burlingame, Dodge City, Great Bend, Herington, Marion, McPherson, and Olathe submitted bids for the monument.

<sup>25</sup> Christy Davis and Brenda Spencer. *Council Grove Downtown Historic District*. Washington, DC: National Parks Service, 2010. 51-52.

<sup>26</sup> Jane Mallinson. *Wagon Tracks* 9, 1 (Nov 1994).

<sup>27</sup> Cindy Thompson. "Madonna of the Western Trails." *True West Magazine*. Accessed on 15 Oct 2017 at <https://truewestmagazine.com/madonna-of-the-western-trails/>.

<sup>28</sup> 1929 Proceedings, National Society DAR, 190 (provided by Shirley Coupal of the KS Society DAR).

<sup>29</sup> *Council Grove Republican*, 15 Sept 1927 and Morris County Register of Deeds. Book of Deeds, No. 37. 52, 411.

<sup>30</sup> According to the National Archives NSDAR, "The Daughters of the American Revolution have been deeded the plot of ground with a 70 foot frontage on Union Street paving to add to the city's site for the National Old Trails Road monument. The County Commissioner agreed to deed the Daughter's 70 feet bordering the City Park site on the north. The gift is made for the purpose of adding to the Madonna of the Trail sites, and is to remain the property of the Society forever free from taxes, if used for the purpose given." *Council Grove Republican*, 4 Oct 1927. The park site was later expanded to include the former hitching yard and the entire park was deeded to the City of Council Grove who maintains it today.

<sup>31</sup> *Council Grove Republican*, 25 Oct 1927.

<sup>32</sup> *Council Grove Republican*, 9 Nov 1927.



Madonna of the Trail

Name of Property

Morris County, KS

County and State

On September 7, 1928, the Council Grove Statue was dedicated. Mrs. Moss and Mr. Truman headlined the event that included many Kansas dignitaries. On September 7, 1978, and 2008, the Kansas Society DAR hosted 50<sup>th</sup> and 75<sup>th</sup> anniversary events commemorating the dedication of the original Council Grove Madonna of the Trail statue. The importance of the monument and all it signifies has not waned for Council Grove. Ideas are already emerging for the 100<sup>th</sup> anniversary celebration that will occur ten years from now.

Conclusion

Although twelve Madonna of the Trail statues exist in the United States, only three are directly related to the Santa Fe Trail Lexington, MO and Lamar, CO in addition to Council Grove. The other nine Madonna of the Trail statues were erected along other Old Trails locations in Bethesda, MD; Beallsville, PA; Wheeling, WV; Springfield, OH; Richmond, IN; Vandalia, IL; Albuquerque, NM; Springerville, AZ; and Upland, CA.

Each statue erected by the DAR is still owned and maintained by the local chapters and state societies in which they are located. Three of the monuments are listed on the National Register as part of designated historic districts including Wheeling, WV (National Road Corridor Historic District, 2010); Lexington, MO, (Highland Avenue Historic District, 1980); and Upland, CA, (Euclid Avenue Historic District, 2005). Albuquerque, NM is the only Madonna listed independently (2006).

Council Grove played a unique role on the Santa Fe Trail, providing a vital way station for travelers. The DAR chose to erect the Madonna of the Trail there in recognition of the role the town played not only in Kansas, but in American history in the development of the West, as well as the role women played in pioneering the West. With this nomination Council Grove will be the first Madonna nominated as part of the Santa Fe Trail MPS.<sup>33</sup> Council Grove's 1928 dedication program stated, "For all time this 'Madonna of the Trail,' will stand as a monument, symbolic of the women, who in other days worked and waited, who gave that we might have and sacrificed for a Cause that today we possess."<sup>34</sup>

---

<sup>33</sup> The Council Grove Madonna was included in the original (1963) Council Grove Santa Fe Trail-related National Historic Landmark. In 1981 National Historic Landmark program met with the Kansas SHPO to review and redefine the boundaries of the NHL. As a result, the 1985 update of the NHL removed the Madonna due to it "having nothing to do with the nationally significant period" established in the NHL context. de Teel Patterson Tiller to Carol Schull, Memo "Council Grove NHL Boundary Review and Redefinition," April 7, 1981. On file with SHPO.

<sup>34</sup> "Dedication Ceremonies of the Madonna of the Trail, Council Grove, Kansas." Daughters of the American Revolution, 7 Sept 1928.

Madonna of the Trail  
Name of Property

Morris County, KS  
County and State

## 9. Major Bibliographical References

**Bibliography** (Cite the books, articles, and other sources used in preparing this form.)

- 1929 Proceedings, National Society DAR, 190 (provided by Shirley Coupal, Kansas Society DAR).
- Ancestry.com. *Hesse, Germany, Births, 1851-1901* [database on-line]. Lehi, UT, USA: Ancestry.com Operations, Inc., 2016. Original data: Geburtenregister und Namensverzeichnisse. Hessisches Hauptstaatsarchiv, Wiesbaden, Deutschland.
- "August Leimbach." *Dict.CC* [German-English Dictionary] accessed online on 16 Oct 2017 at [http://www6.dict.cc/wp\\_examples.php?lp\\_id=1&lang=en&s=architectural%20sculpture](http://www6.dict.cc/wp_examples.php?lp_id=1&lang=en&s=architectural%20sculpture).
- "Brief Summary of the Santa Fe Trail through Kansas with Report of the Committee Appointed to Prepare a Correct Map." Reprinted from the *Eighteenth Biennial Report of the Kansas State Historical Society, 1911-1912*. Topeka, KS: Kansas State Historical Society, 1912.
- Cordry, Almira Sheffield Peckham. *The Story of the Marking of the Santa Fe Trail by the Daughters of the American Revolution*. Topeka, KS: Kansas DAR, 1915.
- Council Grove Republican*. Oct. 4, Oct. 25, and Nov. 9, 1927; 16 Oct 1929 and 3 Mae 1970.
- Davis, Christy and Brenda Spencer. *Council Grove Downtown Historic District*. Washington, DC: National Parks Service, 2010.
- Daughters of the American Revolution. *Dedication Ceremonies of the Madonna of the Trail, Council Grove, Kansas*. Topeka, KS: Daughters of the American Revolution, 7 Sept 1928.
- Ellis, Katherine H. and D.L Turner. *The White Mountains of Apache County*. Chicago, IL: Arcadia Publishing, 2010. Photo credited to Trish Patterson.
- Fetter, Rosemary. "Madonna of the Trail celebrated pioneer mothers." *Colorado Gambler*, May 9, 2017. <http://coloradogambler.com/madonna-trail-celebrated-pioneer-mothers/>.
- Findley, Rowe. "Along the Santa Fe Trail." *National Geographic*. March 1991: 117.
- Goode, James M. *The Outdoor Sculpture of Washington, D.C.: A Comprehensive Historical Guide*. Washington, DC: Smithsonian Institution Press, 1974. 574.
- Hinckley, James. *Route 66 Encyclopedia*. Stillwater, MN: Voyageur Press, 2010. 166.
- Jourdan, Katherine M. and Laura J. Pfeifer. *National Register of Historic Places Registration Form: National Road Corridor Historic District*. Washington, DC: National Park Service, 1992.
- Kansas State Historical Society. *Historic Resources of the Santa Fe Trail National Register of Historic Places Multiple Property Documentation Form*. Washington, DC: National Parks Service, 1993, rev. 2012. Authors were KSHS Staff, amended form; URBANA Group, original form.
- Kansas State Historical Society. Photo File for Madonna of the Trail.
- Kansas Territorial Legislature, first session, Chapter 118, Special Laws, *The Statutes of the Territory of Kansas; Passed at the First Session of the Legislative Assembly, One Thousand Eight Hundred and Fifty-Five*. Shawnee Manual Labor School, KT: John T. Brady, 1855, 960.
- Magoffin, Susan Shelby. *Down The Santa Fe Trail and Into New Mexico: The Diary of Susan Shelby Magoffin, 1846-1847*, ed. Stella M. Drumm. Lincoln & London: University of Nebraska Press, 1982. 6, 102-103.
- Mallinson, Jane. "Harry Truman and the Selection of the Sites for the DAR Madonna Statues, Part 1." Santa Fe Trail Association. *Wagon Tracks* 9, 1 (Nov 1994) accessed on 15 Oct 2017 at [http://digitalrepository.unm.edu/wagon\\_tracks/vol9/iss1/1/](http://digitalrepository.unm.edu/wagon_tracks/vol9/iss1/1/).
- Matthews, Mary J. *National Register of Historic Places Inventory Nomination Form: Historic Resources of Lexington*. Washington, DC: National Parks Service, 1980.
- McClintock, Kenneth W. Unpublished History of Council Grove's Madonna of the Trail Monument, 2017. Provided by author.
- Meyer, Marian. *Mary Donoho: New First Lady of the Santa Fe Trail*. Santa Fe: Ancient City Press, 1991.
- National Parks Service. *Santa Fe National Historic Trail Comprehensive Management and Use Plan*. Washington, DC: National Parks Service, 1990.
- "Statue Gets Interpretive Sign Panel." *Palladium-Item*, 12 Dec. 2012, A1-3 accessed on 15 Oct 2017, at Newspapers.com. Article included interview with Leimbach grandson.
- Thompson, Cindy. "Madonna of the Western Trails." *True West Magazine*. Accessed on 15 Oct 2017 at <https://truwestmagazine.com/madonna-of-the-western-trails/>.
- Thomason, Philip and Teresa Douglass. *New Mexico Madonna of the Trail National Register Nomination Form*. Washington, DC: National Parks Service, 2006.

Madonna of the Trail  
Name of Property

Morris County, KS  
County and State

**Previous documentation on file (NPS):**

preliminary determination of individual listing (36 CFR 67 has been requested)  
 previously listed in the National Register  
 previously determined eligible by the National Register  
 designated a National Historic Landmark  
 recorded by Historic American Buildings Survey # \_\_\_\_\_  
 recorded by Historic American Engineering Record # \_\_\_\_\_  
 recorded by Historic American Landscape Survey # \_\_\_\_\_

**Primary location of additional data:**

State Historic Preservation Office  
 Other State agency  
 Federal agency  
 Local government  
 University  
 Other  
Name of repository: Morris County Historical Society

Historic Resources Survey Number (if assigned): NA

**10. Geographical Data**

**Acreeage of Property** 1.7

**Provide latitude/longitude coordinates OR UTM coordinates.**  
(Place additional coordinates on a continuation page.)

**Latitude/Longitude Coordinates**

Datum if other than WGS84: \_\_\_\_\_

1 38.662071 -96.486912  
Latitude: Longitude: Latitude: Longitude:

**Verbal Boundary Description**

Moiser's Second Addition, Council Grove, Morris County, KS BLOCK 1, W 289' LT E; LT F BEG 80'S NW COR LT F, E 70', S 80', W 70', N 80' TO POB

**Boundary Justification**

The above description reflects the parcel comprised of the park in which the Madonna of the Trail is located.

**11. Form Prepared By**

name/title Brenda & Michelle Spencer  
organization Spencer Preservation date November 1, 2017  
street & number 10150 Onaga Road telephone 785-456-9857  
city or town Wamego State KS Zip 66547  
e-mail Brenda@SpencerPreservation.com

**Property Owners:** (complete this item at the request of the SHPO or FPO)

**STATUE and LAND ON WHICH STATUE SITS**

name Kansas Society Daughters of the American Revolution (c/o Rebecca Kline)  
street & number 9201 Kessler telephone rggkline@gmail.com  
city or town Overland Park state KS zip 66212

**PARK LAND**

name City of Council Grove (Nick Jones, City Administrator)  
street & number 205 Union (P.O. Box 313) telephone 620-767-5417  
city or town Council Grove state KS zip 66846

Madonna of the Trail  
Name of Property

Morris County, KS  
County and State

---

**Additional Documentation**

---

**Photographs**

**Photograph Log**

Name of Property: Madonna of the Trail

City or Vicinity: Council Grove

County: Morris State: Kansas

Photographer: Brenda R. Spencer

Date Photographed: 23 October 2017

Description of Photograph(s) and number, include description of view indicating direction of camera:

- |          |    |  |
|----------|----|--|
| 1 of 10  | NW | View of park from south on Hwy 56  |
| 2 of 10  | NE | Madonna monument in center of park from walk at SW corner of site                |
| 3 of 10  | SE | View of park and monument from north west of monument, with benches and lighting |
| 4 of 10  | E  | Front approach to monument with flagpole NW of statue, from W                    |
| 5 of 10  | SE | NW view of monument  |
| 6 of 10  | E  | Front/west side of monument  |
| 7 of 10  | NE | South and west sides of monument   |
| 8 of 10  | N  | Inscription on south base of monument  |
| 9 of 10  | W  | Inscription on east/rear of monument base  |
| 10 of 10 | S  | Inscription on north base of monument  |

**Paperwork Reduction Act Statement:** This information is being collected for applications to the National Register of Historic Places to nominate properties for listing or determine eligibility for listing, to list properties, and to amend existing listings. Response to this request is required to obtain a benefit in accordance with the National Historic Preservation Act, as amended (16 U.S.C.460 et seq.).

**Estimated Burden Statement:** Public reporting burden for this form is estimated to average 100 hours per response including time for reviewing instructions, gathering and maintaining data, and completing and reviewing the form. Direct comments regarding this burden estimate or any aspect of this form to the Office of Planning and Performance Management, U.S. Dept. of the Interior, 1849 C. Street, NW, Washington, DC.

Madonna of the Trail  
Name of Property

Morris County, KS  
County and State

PHOTO KEY



NOT TO SCALE

**PHOTO KEY**  
Madonna of the Trail  
NW Corner Intersection of HWY 177 (Union Street)  
and HWY 56 (E Main Street), Council Grove, KS  
Aerial View from Google Maps 2017

Madonna of the Trail  
Name of Property

Morris County, KS  
County and State

FIGURES

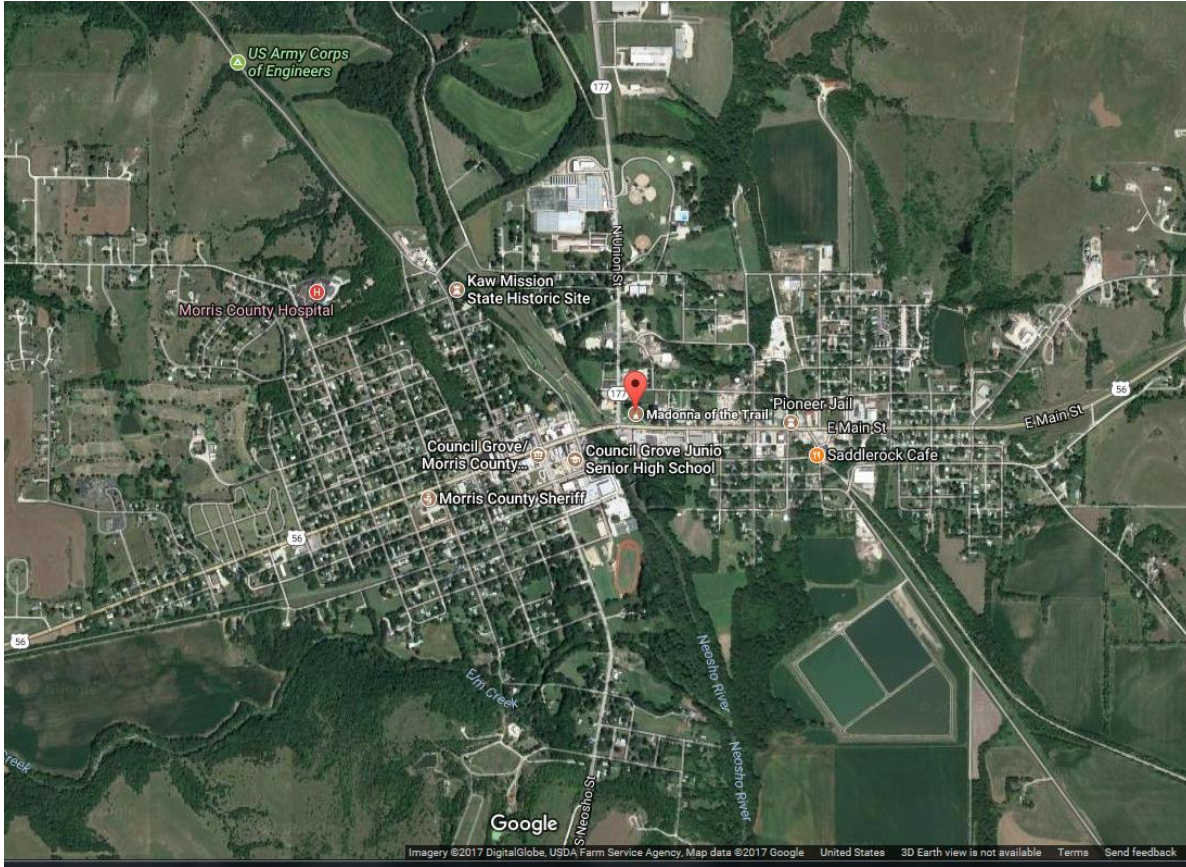


Figure 1 – Context Map and Site Map (Google Maps, 2017)  
Madonna of the Trail  
NW Corner of HWY 177 and Hwy 56  
Council Grove, Morris County, KS  
Latitude/Longitude: 38.662071, -96.486912 (WGS 84)

Madonna of the Trail  
Name of Property

Morris County, KS  
County and State



Figure 2 – Historic View of Sculptor working on Madonna statue (Trish Patterson (photo) in Katherine H. Ellis and D.L Turner. *The White Mountains of Apache County*. Chicago, IL: Arcadia Publishing, 2010, 92.

**Madonna of the Trail**

Name of Property

**Morris County, KS**

County and State



Figure 3 – Historic Views of Council Grove Madonna of the Trail, 1938 (L) and 1948 (R)  
(Kansas State Historical Society Photo Collection, Madonna of the Trail)



Figure 4 – Current Views of other commemorative markers in the park (Spencer, 2017)













MADONNA OF THE TRAIL

N.S.D.A.R. MEMORIAL  
TO THE  
PIONEER MOTHERS  
OF THE  
COVERED WAGON DAYS



MADONNA OF THE TRAIL

N.S.D.A.R. MEMORIAL  
TO THE  
PIONEER MOTHERS  
OF THE  
COVERED WAGON DAYS



MADONNA OF THE TRAIL

N-S-D-A-R MEMORIAL  
TO THE  
PIONEER MOTHERS  
OF THE  
COVERED WAGON DAYS

HERE EAST MET WEST  
WHEN THE OLD SANTA FE TRAIL  
WAS ESTABLISHED AUGUST 10, 1835  
AT A COUNCIL BETWEEN THE  
UNITED STATES COMMISSIONERS  
AND DEAFE INDIANS

HERE EAST MET WEST  
WHEN THE OLD SANTA FE TRAIL  
WAS ESTABLISHED AUGUST 10, 1825  
AT A COUNCIL BETWEEN THE  
UNITED STATES COMMISSIONERS  
AND OSAGE INDIANS.



THE NATIONAL  
OLD TRAILS ROAD



1825 - 1866 TRAILSMEN  
CAMPED ON THE SPOT  
1847 - 1873 KAW INDIANS  
LIVED HERE  
1847 - FIRST WHITE SETTLER  
SETH HAYS  
1847 - COUNCIL GROVE  
A TRADING POST

1978  
MEMORY BOX

UNITED STATES DEPARTMENT OF THE INTERIOR  
NATIONAL PARK SERVICE

NATIONAL REGISTER OF HISTORIC PLACES  
EVALUATION/RETURN SHEET

Requested Action:

Property Name:

Multiple Name:

State & County:

Date Received: 2/14/2018      Date of Pending List: 3/9/2018      Date of 16th Day: 3/26/2018      Date of 45th Day: 4/2/2018      Date of Weekly List: 3/30/2018

Reference number:

Nominator:

Reason For Review:

Accept       Return       Reject      3/26/2018 Date

Abstract/Summary Comments:

Recommendation/ Criteria

Reviewer Alexis Abernathy      Discipline Historian

Telephone (202)354-2236      Date \_\_\_\_\_

DOCUMENTATION:    see attached comments : No    see attached SLR : No

If a nomination is returned to the nomination authority, the nomination is no longer under consideration by the National Park Service.



6425 SW 6th Avenue  
Topeka KS 66615-1099



Governor Jeff Colyer, M.D.  
Jennie Chinn, Executive Director

February 13, 2018

Paul Loether, National Register Chief  
National Park Service  
National Register of Historic Places  
1849 C Street, NW, Mail Stop 7228  
Washington, DC 20240

Re: National Register documents for Kansas

Dear Mr. Loether:

Please find enclosed the following National Register documents:

NEW NOMINATION in Certified Local Government (1)

- **The Norton Apartments; Salina, Saline County, Kansas** (new nomination)
  - Physical, signed copy of the nomination's first page;
  - 1 CD (disk #1) with a PDF of the true and correct copy of the nomination and letter of support;
  - 1 CD (disk #2) with photographs.

NEW NOMINATIONS in non-CLG communities (2)

- **Madonna of the Trail; Council Grove, Morris County, Kansas** (new nomination under "Historic Resources of the Santa Fe Trail" MPS)
  - Physical, signed copy of the nomination's first page;
  - 1 CD (disk #1) with a PDF of the true and correct copy of the nomination;
  - 1 CD (disk #2) with photographs.
- **Neodesha City Hall Building; Neodesha, Wilson County, Kansas** (new nomination)
  - Physical, signed copy of the nomination's first page;
  - 1 CD (disk #1) with a PDF of the true and correct copy of the nomination;
  - 1 CD (disk #2) with photographs.

ADDITIONAL DOCUMENTATION – BOUNDARY DECREASE in Certified Local Government (1)

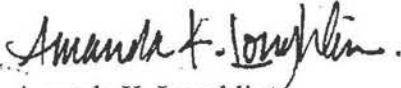
- **North Topeka Avenue & 10<sup>th</sup> Street Historic District; Wichita, Sedgwick County, Kansas** (NRIS #83000438) (additional documentation, boundary decrease)
  - Physical, signed copy of the documentation;
  - 1 CD (disk #1) with a PDF of the true and correct copy of the documentation;
  - 1 CD (disk #2) with photographs.

ADDITIONAL DOCUMENTATION – REMOVAL REQUEST (1)

- **Barton County Bridge #650; Beaver vicinity, Barton County, Kansas**  
(NRIS #08000612) (removal request)
  - Physical, signed copy of the documentation;
  - 1 CD (disk #1) with a PDF of the true and correct copy of the documentation;
  - 1 CD (disk #2) with photograph.

If you have any questions about these enclosed items, please contact me at ext. 216 or [Amanda.Loughlin@ks.gov](mailto:Amanda.Loughlin@ks.gov).

Sincerely,



Amanda K. Loughlin  
National Register Coordinator  
Kansas State Historic Preservation Office

Enclosures